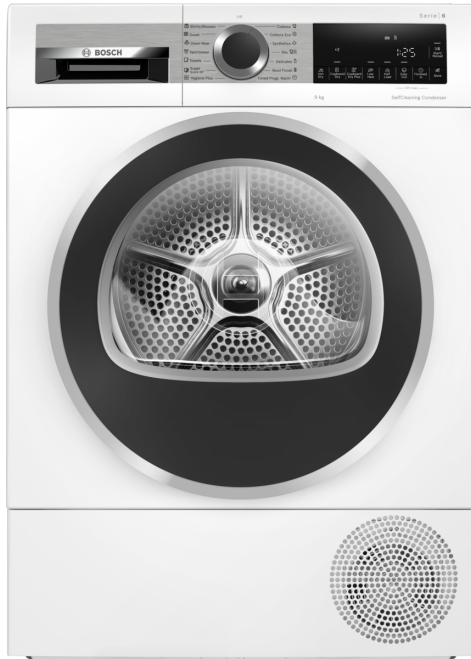


Series 6, Heat pump dryer, 9 kg WQG24570SG



- **Sensitive Drying System:** for gentle drying without wrinkles.
- **Anti-crease:** laundry is automatically loosened once program finished and does not crease.
- **Fast drying within 40 minutes, suitable for a small amount of synthetic fibers and thin fabrics.**
- **Self Cleaning Condenser:** keeps the condenser free of fluff to maintain optimal energy efficiency.

Built-in / Free-standing: Free-standing
 Removable top: No
 Door hinge: Right
 Color / Material body: White
 Length electrical supply cord: 145.0 cm
 Dimensions: 842 x 598 x 613 mm
 Net weight: 56.4 kg
 Drum volume: 112 l
 Fluorinated greenhouse gases: No
 Type of refrigerant: R290
 Hermetically sealed equipment: Yes
 The quantity expressed in CO2 equivalent: 0.000 t
 Connection rating: 800 W
 Fuse protection: 10 A
 Voltage: 220-240 V
 Frequency: 50 Hz
 Drying process: automatic
 Loading capacity: 9.0 kg
 Energy efficiency class: A++
 Power consumption in off-mode - NEW (2010/30/EC): 0.10 W
 Power consumption in left-on mode - NEW (2010/30/EC): 0.75 W
 Condensation efficiency class - NEW (2010/30/EC): B



WMZ20600 Wool in basket - accessory
 WTZ27400 Stacking kit with pull-out shelf
 WTZ27410 Stacking kit
 WTZPW20D Platform with pull-out, dryer, cubic

Series 6, Heat pump dryer, 9 kg WQG24570SG

Technical Information

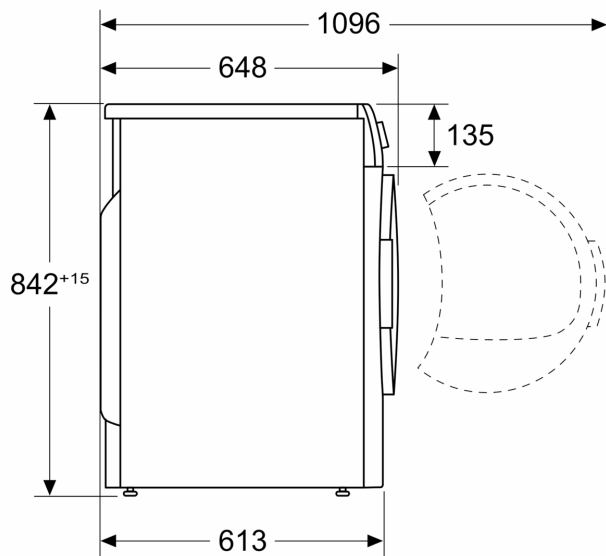
- Dimensions (H x W x D): 84.2 cm x 59.8 cm x 61.3 cm

Programmes

- Anti crease cycle 120 min at the end of the programme
- Sensitive Drying Design: Stainless steel drum with textile care structure; soft design paddles
- AntiVibration™ Design: Stability and Quietness
- Drum Light Interior
- Child Proof Lock
- End of cycle indicator

**Series 6, Heat pump dryer, 9 kg
WQG24570SG**

Measurements in mm



Measurements in mm

