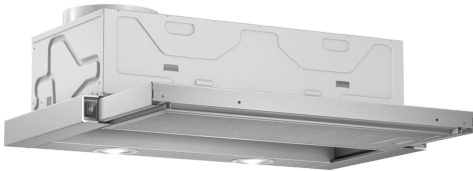


**Series 2, Telescopic cooker hood, 60 cm, Silver metallic  
DFL064W53B**



DSZ4545	Standard recirculation kit
DSZ4551	Standard odor filter (replacement)
DSZ4652	Handle strip white
DSZ4655	Handle strip
DSZ4656	Handle strip black

**The telescopic cooker hood: practically disappears into your upper cabinet, giving you a sleek kitchen front.**

- **Metal Grease Filter:** cleans the air, captures grease, easy monthly clean-up.
- **3-Speed Power Level Options To Suit Your Cooking Style And Recipes**
- **2 Halogen Lights**

Typology: ..... Pull-out  
 Length electrical supply cord: ..... 175.0 cm  
 Min. required niche size for installation (HxWxD): 162mm x 526.0mm x 290mm mm  
 Net weight: .....8.2 kg  
 Type of control: .....mechanical  
 Number of speed settings: ..... 3  
 Max. air extraction: ..... 387 m<sup>3</sup>/h  
 Max. air recirculation: ..... 195 m<sup>3</sup>/h  
 Number of lights: ..... 2  
 Noise level: .....67 dB(A) re 1 pW  
 Diameter of air outlet: ..... 150 / 120 mm  
 Grease filter material: .....Washable aluminium  
 Odour filter: ..... No  
 Operating Mode: .....Exhaust / Recirculation (Accessory available separately)  
 Optional accessories: ..... DSZ4545, DSZ4551, DSZ4652, DSZ4655, DSZ4656  
 Type of lamps used: ..... Halogen  
 Total power of the lamps: ..... 40 W  
 Grease filter type: .....Kassette  
 Connection rating: ..... 145 W  
 Fuse protection: .....10 A  
 Voltage: ..... 220-240 V  
 Frequency: ..... 50 Hz  
 Plug type: ..... GB plug  
 Installation typology: ..... Built-in  
 Material body: ..... zinc plated  
 Plug type: ..... GB plug  
 Dimensions of the product, with chimney (if exists) (in): .....x x  
 Dimensions of the packed product: ..... 12.20 x 25.19 x 14.17  
 Net weight: ..... 18.000 lbs  
 Gross weight: ..... 21.000 lbs  
 Motor location: ..... Integrated motor in hood body  
 No-return airflow flap: ..... No  
 Length electrical supply cord: ..... 175.0 cm  
 Dimensions of the product, with chimney (if exists): .....203 x 598.0 x 290.0 mm  
 Dimensions of the packed product (HxWxD): ..... 310 x 640 x 360 mm  
 Net weight: .....8.2 kg  
 Gross weight: ..... 9.8 kg



**Series 2, Telescopic cooker hood, 60  
cm, Silver metallic  
DFL064W53B**

**The telescopic cooker hood: practically  
disappears into your upper cabinet, giving  
you a sleek kitchen front.**

---

**Performance**

- Noise level according to EN 60704-2-13 at max. normal use exhaust air: Noise, max. speed in normal us: 53 dB dB(A) re 1 pW

**Design**

- Wall mounted hood
- Rocker switches

**Power:**

- 3 speeds plus intensive setting
- 2 x LED spot 2,15W (low volt)
- Metal grease fliter, dishwasher safe

**Technical information**

- Suitable for ducted or re-circulated extraction
- Dimensions (HxWxD): 203 x 598 x 290 mm
- Built-in dimensions (HxWxD): 162 x 526 x 290 mm
- Power rating:220 W
- Diameter pipe Ø 150 mm (Ø 120 mm enclosed)

**Series 2, Telescopic cooker hood, 60 cm, Silver metallic**  
**DFL064W53B**

