

Series 6, heat pump tumble dryer, 9 kg WQG24200TH



- **Energy efficiency class:** A+++
- **AutoDry:** gently dries laundry to precisely the degree of dryness you want.
- **Sensitive Drying system** combines warm air currents and a gentle drum structure for dry clothes
- **Anti-crease:** laundry is automatically loosened once program finished and does not crease.
- **Easy Clean with A++:** dries very efficient. With easy cleaning of the condenser filter.

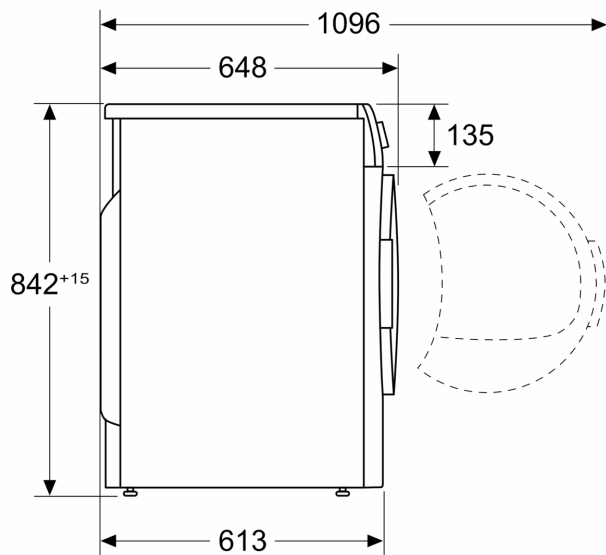
Built-in / Free-standing: Free-standing
 Removable top: No
 Door hinge: Right
 Color / Material body: White
 Length electrical supply cord: 145.0 cm
 Dimensions: 842 x 598 x 613 mm
 Net weight: 49.7 kg
 Drum volume: 112 l
 Fluorinated greenhouse gases: No
 Type of refrigerant: R290
 Hermetically sealed equipment: Yes
 The quantity expressed in CO2 equivalent: 0.000 t
 Connection Rating: 625 W
 Fuse protection: 10 A
 Voltage: 220-240 V
 Frequency: 50 Hz
 Drying process: automatic
 Capacity cotton - NEW (2010/30/EC): 9.0 kg
 Energy efficiency rating: A++
 Energy consumption electric dryer, full load - NEW (2010/30/EC): 2.11 kWh
 Standard cotton programme time at full load: 238 min
 Energy consumption electric dryer, partial load - NEW (2010/30/EC): 1.22 kWh
 Standard cotton programme time at partial load: 143 min
 Weighted annual energy consumption, electric dryer - NEW (2010/30/EC): 259.0 kWh/annum
 Power consumption in off-mode - NEW (2010/30/EC): 0.15 W
 Power consumption in left-on mode - NEW (2010/30/EC): 0.50 W
 Weighted programme time: 184 min
 Condensation efficiency class - NEW (2010/30/EC): B
 Average condensation efficiency full load (%): 85 %
 Average condensation efficiency partial load (%): 85 %
 Weighted condensation efficiency (%): 85 %

WMZ20600 Wool in basket - accessory
 WTZ1110 Condenser drainage kit
 WTZ11400 Stacking kit with pull-out shelf
 WTZ20410 Stacking kit
 WTZPW20D Platform with pull-out, dryer, cubic



**Series 6, heat pump tumble dryer, 9
kg
WQG24200TH**

Measurements in mm



Measurements in mm

