

Series 6, heat pump dryer, 9 kg WQG24509GB


A++


- **Self Cleaning Condenser:** keeps the condenser free of fluff to maintain optimal energy efficiency.
- **AutoDry:** gently dries laundry to precisely the degree of dryness you want.
- **Anti Vibration Design:** extremely stable and especially quiet thanks to special vibration protection.
- **Climate friendly dryer with the most environmental friendly agent (R290).**
- **Big LED Display: easy operation and extra functions available.**

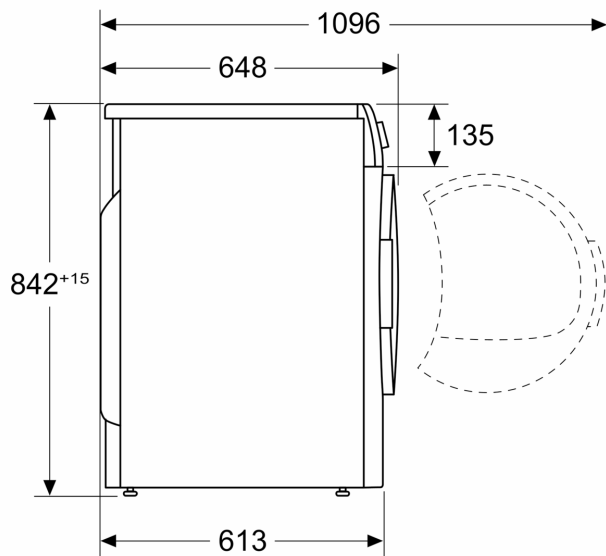
Built-in / Free-standing:	Free-standing
Removable top:	No
Door hinge:	Right
Color / Material body:	White
Length electrical supply cord:	179.5 cm
Dimensions:	842 x 598 x 613 mm
Net weight:	53.1 kg
Drum volume:	112 l
Fluorinated greenhouse gases:	No
Type of refrigerant:	R290
Hermetically sealed equipment:	Yes
The quantity expressed in CO2 equivalent:	0.000 t
Connection rating:	800 W
Fuse protection:	10 A
Voltage:	220-240 V
Frequency:	50 Hz
Drying process:	automatic
Loading capacity:	9.0 kg
Energy efficiency class:	A++
Energy consumption electric dryer, full load - NEW (2010/30/EC):	2.05 kWh
Standard cotton programme time at full load:	176 min
Energy consumption electric dryer, partial load - NEW (2010/30/EC):	1.25 kWh
Standard cotton programme time at partial load:	121 min
Weighted annual energy consumption, electric dryer - NEW (2010/30/EC):	258.0 kWh/annum
Power consumption in off-mode - NEW (2010/30/EC):	0.15 W
Power consumption in left-on mode - NEW (2010/30/EC):	0.50 W
Weighted programme time:	145 min
Condensation efficiency class - NEW (2010/30/EC):	B
Average condensation efficiency full load (%):	86 %
Average condensation efficiency partial load (%):	86 %
Weighted condensation efficiency for the standard cotton programme at full and partial load:	86 %

WTZPW20D	Platform with pull-out, dryer, cubic
WMZ20600	Wool in basket - accessory
WTZ27400	Stacking kit with pull-out shelf
WTZ27410	Stacking kit



Series 6, heat pump dryer, 9 kg
WQG24509GB

Measurements in mm



Measurements in mm

