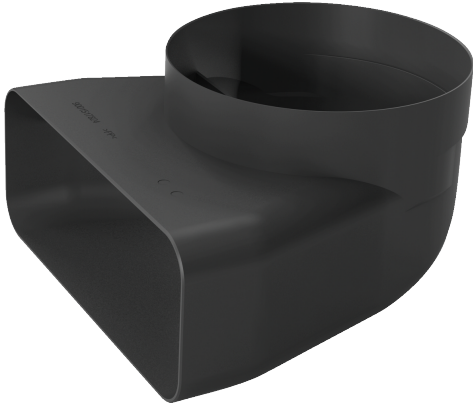


**Adapter duct, Ø 150 mm, 90 °,  
round-flat  
HEZ9VDS1**



---

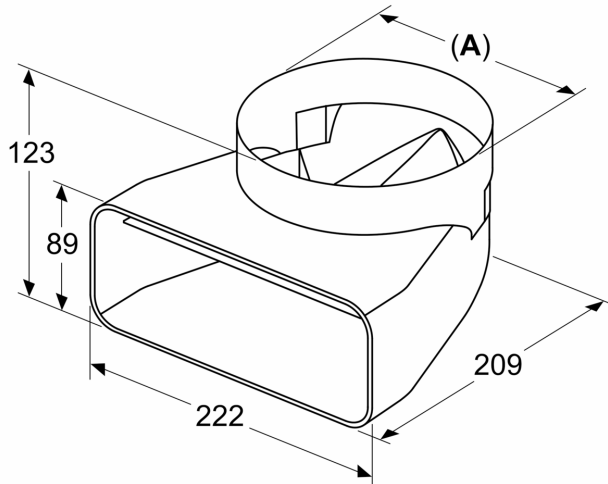
Dimensions of the packed product (HxWxD): ..... 190 x 235 x 220 mm  
Pallet dimensions: ..... 175.0 x 80.0 x 120.0  
Quantity per packing unit: ..... 1  
Standard number of units per pallet: ..... 128  
Net weight: ..... 0.3 kg  
Gross weight: ..... 0.5 kg

---



**Adapter duct,  $\varnothing$  150 mm, 90 °,  
round-flat  
HEZ9VDSI1**

measurements in mm



**A:  $\varnothing$  152.5**