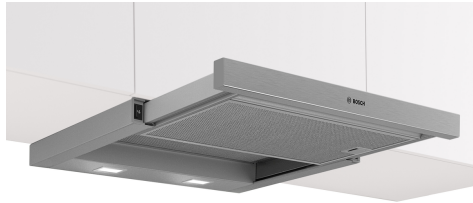


**Series 2, telescopic cooker hood, 60 cm, Silver metallic DFM064W54**



- DSZ4686 Handle strip black
- DWZ1IT1B4 Clean Air Standard odor filter (repl.)
- DWZ1IT1I4 Clean Air Standard recirculation kit
- HEZG9AS00S Adapter
- DSZ4545 Standard recirculation kit
- DSZ4551 Standard odor filter (replacement)
- DSZ4682 Handle strip white

**Telescopic cooker hood: barely visible integrated in the wall unit, this ensures a clear kitchen design.**

- **Metal Grease Filter:** cleans the air, captures grease, easy monthly clean-up.

Typology: ..... Pull-out  
 Length electrical supply cord: ..... 175.0 cm  
 Min. required niche size for installation (HxWxD): 162mm x 526.0mm x 290mm mm  
 Net weight: .....8.8 kg  
 Type of control: .....mechanical  
 Number of speed settings: .....3  
 Max. air extraction: .....388 m<sup>3</sup>/h  
 Max. air recirculation: ..... 257 m<sup>3</sup>/h  
 Number of lights: ..... 2  
 Noise level: .....67 dB(A) re 1 pW  
 Diameter of air outlet: ..... 120 / 150 mm  
 Grease filter material: .....Washable aluminium  
 Odour filter: ..... No  
 Operating Mode: .....Exhaust / Recirculation (Accessory available separately)  
 Optional accessories: .....DSZ4686, DWZ1IT1B4, DWZ1IT1I4, HEZG9AS00S, DSZ4545, DSZ4551, DSZ4682  
 Type of lamps used: ..... LED  
 Total power of the lamps: ..... 3 W  
 Grease filter type: .....Kassette  
 Connection rating: ..... 108 W  
 Fuse protection: ..... 10 A  
 Voltage: ..... 220-240 V  
 Frequency: ..... 50 Hz  
 Plug type: ..... Gardy plug w/ earthing  
 Installation typology: ..... Built-in  
 Material body: ..... zinc plated  
 Plug type: ..... Gardy plug w/ earthing  
 Dimensions of the product, with chimney (if exists) (in): .....x x  
 Dimensions of the packed product: ..... 12.20 x 25.19 x 14.17  
 Net weight: ..... 19.000 lbs  
 Gross weight: ..... 23.000 lbs  
 Motor location: ..... Integrated motor in hood body  
 No-return airflow flap: ..... Yes  
 Length electrical supply cord: ..... 175.0 cm  
 Dimensions of the product, with chimney (if exists): .....203 x 598.0 x 290.0 mm  
 Dimensions of the packed product (HxWxD): ..... 310 x 640 x 360 mm  
 Net weight: .....8.8 kg  
 Gross weight: ..... 10.4 kg



## Series 2, telescopic cooker hood, 60 cm, Silver metallic DFM064W54

\* In accordance with the EU-Regulation No 65/2014

**Telescopic cooker hood: barely visible integrated in the wall unit, this ensures a clear kitchen design.**

### Variant

- 60 cm wide
- 60 cm Slimline hood, silver metallic
- Install into a 60cm wide wall cupboard
- Suitable for ducted or re-circulated extraction
- Recirculating kit

### Design

#### Comfort

- Automatic On/Off operation when telescopic canopy is pulled out and pushed back
- rocker switches
- 3 speeds

#### Features

- 2 x 1,5 W LED
- Colour Temperature: 3500 K
- Light Intensity: 131 lux
- Cassette with alu frame
- Metal grease filter, dishwasher safe

#### Performance

- Extraction rate exhaust air according to EN 61591 max. 389 m<sup>3</sup>/h
- Noise level according to EN 60704-2-13 at max. normal use exhaust air: Noise, max. speed in normal us: 67 dB dB(A) re 1 pW
- Noise min./max. Normal Level: 59/67 dB
- 1 high-performance blower, Capacitor motor
- Capacitor motor

#### Planning and installation information

- Dimensions (HxWxD): 203 x 598 x 290 mm
- Built-in dimensions (HxWxD): 162 x 526 x 290 mm
- Diameter pipe Ø 150 mm (Ø 120 mm enclosed)
- with one-way flap
- Electrical cable length 1.75 m
- Stainless steel handle included

#### Consumption Data

- Energy Efficiency Class: B (at a range of energy efficiency classes from A+++ to D)
- Average Energy Consumption: 40.3 kWh/year
- Blower Efficiency Class: C\*
- Lighting Efficiency Class: A
- Grease Filtering Efficiency Class: B
- Power rating: 108 W
- Noise level in recirculation mode:
- Max. normal use: 69 dB(A) re 1 pW
- Extraction rate in recirculation mode:
- Max. normal use: 257 m<sup>3</sup>/h

**Series 2, telescopic cooker hood, 60 cm, Silver metallic**  
**DFM064W54**

