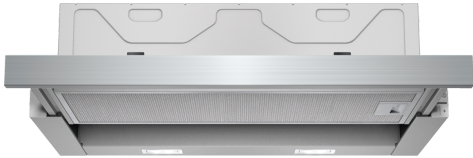


**iQ300, telescopic cooker hood, 60 cm, Silver metallic
LI64MA530I**



The powerful telescopic cooker hood practically disappears into the upper cabinet.

LZ45450	Standard recirculation kit
LZ45510	Standard odor filter (replacement)
LZ46520	Handle strip white
LZ46560	Handle strip black
LZ46850	Design-Handle strip

Typology:Pull-out
 Length electrical supply cord: 175.0 cm
 Min. required niche size for installation (HxWxD): 162mm x 526.0mm x 290mm mm
 Net weight: 8.2 kg
 Type of control: Electronic
 Number of speed settings:3-stages + intensive setting
 Maximum output air extraction: 270 m³/h
 Boost position output recirculating: 171.0 m³/h
 Maximum output recirculating air: 159 m³/h
 Boost position air extraction: 404 m³/h
 Number of lights:2
 Noise level: 62 dB(A) re 1 pW
 Diameter of air outlet: 120 / 150 mm
 Grease filter material: Washable aluminium
 Odour filter: No
 Air circulation: Convertible
 Optional accessories:LZ45450, LZ45510, LZ46520, LZ46560, LZ46850
 Type of lamps used: LED
 Total power of the lamps: 6 W
 Grease filter type: Multilayer cassette
 Connection Rating: 76 W
 Fuse protection: 16 A
 Voltage: 220-240 V
 Frequency: 50; 60 Hz
 Plug type: India plug (16 Ampere)
 Type: Built-in into the cabinet
 Material body: zinc plated
 Plug type: India plug (16 Ampere)
 Dimensions of the product, with chimney (if exists) (in): x x
 Dimensions of the packed product: 12.20 x 25.19 x 14.17
 Net weight: 18.000 lbs
 Gross weight: 21.000 lbs
 Motor location: Integrated motor in hood body
 No-return airflow flap: Yes
 Length electrical supply cord: 175.0 cm
 Dimensions of the product, with chimney (if exists): ..203 x 598.0 x 290.0 mm
 Dimensions of the packed product (HxWxD): ... 310 x 640 x 360 mm
 Net weight: 8.2 kg
 Gross weight: 9.8 kg
 Delay Shut off modes: 10 min



iQ300, telescopic cooker hood, 60 cm, Silver metallic LI64MA530I

Design

- 60 cm Extractor hood with telescopic canopy
- Appliance colour: silver metallic lacquer
- Push button (3 x power levels plus intensive setting) with LED

Technical information

- Extraction rate according to EN 61591 ø 15 cm:
- max. Normal use: 270 m³/h
- Intensive: 404 m³/h
- Noise level according to EN 60704-3 und EN 60704-2-13 exhaust air:
- Max. normal use: 62 dB(A) re 1 pW (49 dB(A) re 20 µPa sound pressure)
- Intensive: 69 dB(A) re 1 pW (56 dB(A) re 20 µPa sound pressure)
- 3 x power levels plus intensive setting
- Noise min./max. Normal Level: 49/62 dB

Comfort

- Automatic revert setting, 6 minutes
- Automatic 10 minutes after running
- Steel filter cover, dishwasher safe
- Efficient BLDC-technology
- 2 x LED 3W
- Colour Temperature: 3500 K
- Light Intensity: 766 lux
- Energy Efficiency Class: A
- Average Energy Consumption: 23.6 kWh/year*
- Blower Efficiency Class: B*
- Lighting Efficiency Class: A*

Dimensions:

- For installation into a 60cm wide cupboard
- Suitable for ducted and re-circulating operation only
- Recirculating kit
- Dimensions (HxWxD): 203 x 598 x 290 mm
- Cutout Dimensions (HxWxD): 16.2 cm x 52.6 cm x 29 cm
- Diameter pipe Ø 150 mm (Ø 120 mm enclosed)
- Total Connected load: 76 W

**iQ300, telescopic cooker hood, 60 cm, Silver metallic
LI64MA530I**

