

Serie | 6

**WTW87660GB**  
**SelfCleaning**  
**Condenser tumble dryer with**  
**heat pump**



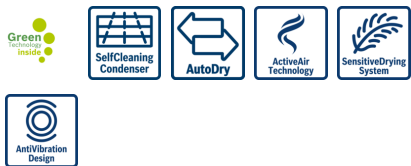
**A+++**

**Our heatpump dryer with SelfCleaning Condenser. Great performance guaranteed with constantly low energy consumption of A+++.**

- **SelfCleaning Condenser™:** automatic condenser cleaning guarantees a high drying performance with durably low energy consumption.
- **Energy efficiency class A+++:** dries extremely efficiently.
- **SensitiveDrying System:** the unique drum structure protects and delivers a drying performance without creases.
- **Noise Level 64 dB:** dries quietly.
- **DirectSelect-Display:** extra comfortable full touch LED Display and illuminated control dial for easy program setting and intuitive operation with high precision.

**Technical Data**

Built-in / Free-standing :	Free-standing
Removable top :	No
Door hinge :	Right
Length electrical supply cord (cm) :	145.0
Height of removable worktop (mm) :	842
Dimensions of the product (mm) :	842 x 597 x 599
Net weight (kg) :	55.150
Fluorinated greenhouse gases :	No
Type of refrigerant :	R290
Hermetically sealed equipment :	Yes
Quantity of fluorinated gases (kg) :	0.149
The quantity expressed in CO2 equivalent (t) :	0.000
EAN code :	4242002990941
Connection Rating (W) :	1000
Current (A) :	10
Voltage (V) :	220-240
Frequency (Hz) :	50
Approval certificates :	CE, VDE
Capacity cotton (kg) - NEW (2010/30/EC) :	8.0
Standard cotton programme :	Cotton cupboard dry
Energy efficiency class (2010/30/EC) :	A+++
Energy consumption electric dryer, full load - NEW (2010/30/EC) (kWh) :	1.44
Standard cotton programme time at full load (min) :	148
Energy consumption electric dryer, partial load - NEW (2010/30/EC) (kWh) :	0.85
Standard cotton programme time at partial load (min) :	95
Weighted annual energy consumption, electric dryer - NEW (2010/30/EC) (kWh) :	177.0
Weighted programme time (min) :	118
Average condensation efficiency full load (%) :	86
Average condensation efficiency partial load (%) :	88
Weighted condensation efficiency (%) :	87



## Serie | 6 Tumble Dryer

### WTW87660GB

#### SelfCleaning

#### Condenser tumble dryer with heat pump

**Our heatpump dryer with SelfCleaning Condenser. Great performance guaranteed with constantly low energy consumption of A+++.**

#### Performance

- Energy Efficiency Class: A+++ at a range of energy efficiency classes from A+++ to D
- Capacity: 8 kg
- Energy consumption 177.0 kWh per year, based on 160 drying cycles of the standard cotton programme at full and partial load, and the consumption of the low-power modes. Actual energy consumption per cycle will depend on how the appliance is used
- Energy consumption of the standard cotton programme at full load 1.44 kWh and energy consumption of the standard cotton programme at half load 0.85 kWh
- The programme Cottons cupboard dry used at full and partial load is the standard drying programme to which the information in the label and the fiche relates, this programme is suitable for drying normal wet cotton laundry and is the most efficient programme in terms of energy consumption for cotton.
- Programme time of the standard cotton programme at full load 148 min and programme time of the standard cotton programme at partial load 95 min.
- Weighted programme time of the standard cotton programme at full and partial load: 118 min.
- Condensation efficiency class B on a scale from G (least efficient) to A (most efficient).
- Average condensation efficiency of the standard cotton programme at full load 86 % and average condensation efficiency of the standard cotton programme at partial load 88 %.
- Weighted condensation efficiency for the standard cotton programme at full and partial load: 87 %.
- Power consumption in off-mode 0.1 W and in left-on mode 0.1 W
- Duration of left-on mode: 30 min
- Noise level: 64 dB (A) re 1 pW

#### Programmes/functions

- Fully electronic control dial for sensor drying programmes and timed programmes
- Special programmes: Woollens, Mixed Load, Towels, Duvet, Timed programme warm, Timed programme cold, Cottons,

Easy-Care, Allergy +, Sportswear, Down, Super Quick 40, shirts/blouses, Delicates

- Touch control buttons: Low heat, Buzzer, start/pause, Drying aim, Fine-tuning for drying level, Child lock 3 sec., Reduced ironing 60 mins, Reduced ironing 120 mins, My favorite, 24 h end Time Delay

#### Key features

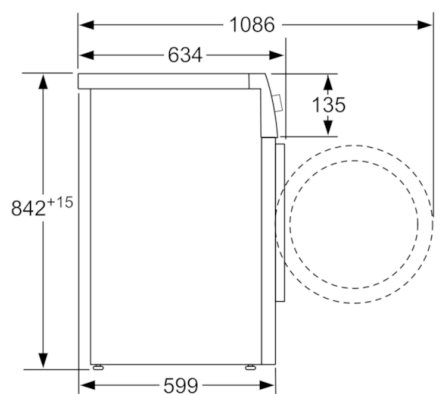
- ActiveAir Technology
- Heat Pump with self cleaning condenser
- Heat pump technology with climate friendly cooling agent
- Sensitive drying: large stainless steel drum with textile care and revolution drying system
- AntiVibration design: for greater stability and quietness

#### Additional features

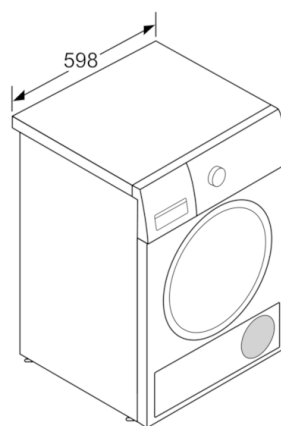
- Large touch-LED-display for Low heat, Buzzer, end Time Delay, start/pause, Drying aim, Fine-tuning for drying level, Child lock 3 sec., Reduced ironing 60 mins, Reduced ironing 120 mins, My favorite
- Inclined ergonomic control panel, slide-under at height of 85 cm
- Jog dial
- Anti crease cycle 120 minutes at the end of the programme
- Drum interior light
- Full container tank indicator
- Child Lock
- Buzzer to indicate the end of cycle
- Door hinge: right-hand
- Container for condensed water

#### Technical Information

- Dimensions (H x W x D): 84.2 x 59.7 x 59.9 cm
- slide-under installation
- Glass door, silver-white

**Serie | 6 Tumble Dryer****WTW87660GB****SelfCleaning****Condenser tumble dryer with heat pump**

measurements in mm



measurements in mm