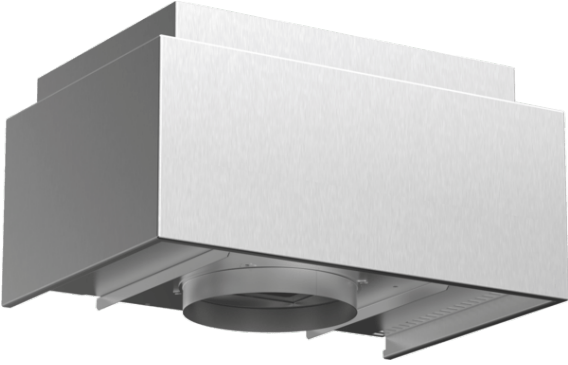


**Recirculation module  
LZ57300**



**Features**

**Technical Data**

Dimensions of the packed product (HxWxD) (mm) : 290 x 394 x 542  
Pallet dimensions : 165.0 x 80.0 x 120.0  
Standard number of units per pallet : 20  
Net weight (kg) : 4.887  
Gross weight (kg) : 6.5  
EAN code : 4242003636794



## Recirculation module LZ57300

### Features

#### Optional accessories

- # For recirculation operation
- # Combined with wall chimney hoods
- # Improved reduction of odour compared to standard recirculation systems
- # Reduction of Noise
- # Extended replacement cycle of cleanAir active carbon filter
- # To be mounted either on outer or on telescopic chimney
- # Including design cover, wall fixation unit, cleanAir active carbon filter, flexible tube, and 2 clamps

**Recirculation module  
LZ57300**

Dimensioned drawings

