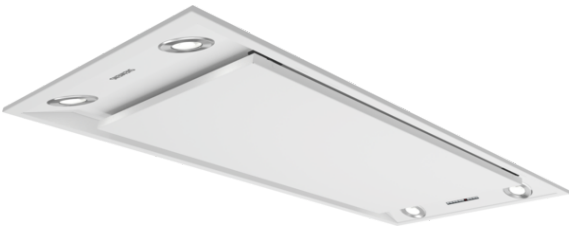


iQ700, ceiling cooker hood, 90 cm,
White
LF959RB21B

A



The sleek, space saving ceiling cooker hood for perfect integration into the ceiling.

- ✓ LED lights: For optimal visibility and ambience when cooking.
- ✓ For peak performance - Intensive setting with automatic revert

Features

Technical Data

Typology : Traditional
Approval certificates : CE, NEMKO
Length electrical supply cord (cm) : 130
Required niche size for installation (HxWxD) : 299mm x 870.0mm x 476mm
Minimum distance above an electric hob : 550
Minimum distance above a gas hob : 650
Net weight (kg) : 15.300
Type of control : Electronic
Maximum output air extraction (m3/h) : 583
Boost position output recirculating (m3/h) : 570.0
Boost position air extraction (m³/h) : 780
Number of lights : 4
Noise level (dB(A) re 1 pW) : 64
Diameter of air outlet (mm) : 150
Grease filter material : Washable aluminium
EAN code : 4242003795071
Connection Rating (W) : 285
Current (A) : 10
Voltage (V) : 220-230
Frequency (Hz) : 50
Plug type : GB plug
Installation typology : Built-in

Optional accessories

LZ56700 cleanAir recirculating module
LZ56200 CleanAir active carbon filter spare part



iQ700, ceiling cooker hood, 90 cm, White LF959RB21B

Features

Design

- White
- White electronic display
- Electronic control via Soft touch button control
- For ceiling mounted installation
- Designed for suspended or flush ceiling installation

Key Information

- Remote control
- Soft touch button control for extractor speeds and light
- Automatic 10 minutes after running
- Interval operation
- 4 x LED 2.5W
- 3 x metal grease filter cassettes - dishwasher safe
- Grease filter saturation indicator
- Steel filter cover
- Rim ventilation

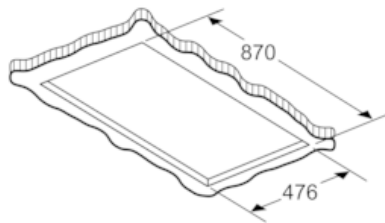
Performance/technical information

- Suitable for ducted and re-circulating operation
- For recirculated extraction CleanAir recirculating kit (accessory) needed
- Extraction rate according to EN 61591 ø 15 cm: max. Normal use 570 m³/h Intensive 780 m³/h
- Noise level according to EN 60704-3 and EN 60704-2-13 exhaust air: Max. normal use: 64 dB(A) re 1 pW Intensive: 71 dB(A) re 1 pW
- 3 x power levels plus intensive setting
- Power rating: 285 W
- Automatic intensive revert
- Noise max. Normal Level: 64 dB*
- Extractor hose 150 mm
- Dimensions (WxD): 900 x 500 mm
- built-in dimensions (HxWxD): 299 x 870 x 476 mm
- Dimensions exhaust air (HxWxD): 299-299 x 900 x 500 mm
- Diameter pipe Ø 150 mm (Ø 150 mm enclosed)
- Light Intensity: 673 lux
- Colour Temperature: 4000 K
- Average Energy Consumption: 58.2 kWh/year*
- Energy Efficiency Class: A (at a range of energy efficiency classes from A+++ to D)
- Blower Efficiency Class: A*
- Lighting Efficiency Class: A*
- Grease Filtering Efficiency Class: E*

* In accordance with the EU-Regulation No 65/2014

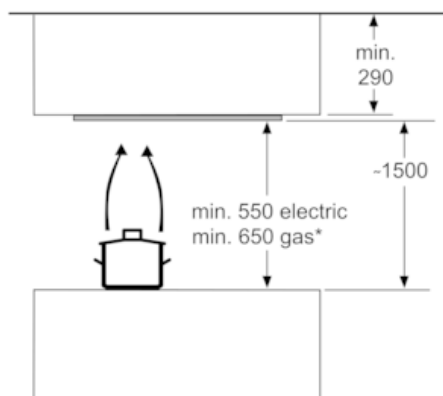
**iQ700, ceiling cooker hood, 90 cm,
White
LF959RB21B**

Dimensioned drawings



A suitable load-bearing substructure is required for securing the extractor hood. Never fit the appliance directly onto plasterboard or similar lightweight construction materials.

measurements in mm



* from upper edge of
pan support

measurements in mm