

**Series 8, 175.6 x 91.2 cm, Black,
Total No Frost
KAN92LB35**



**The NoFrost side-by-side fridge-freezer
with indoor electronics: saves you from
defrosting.**

- **XXL capacity:** extra space for your food when you need it.
- **LED lighting:** all your items in perfect view.
- **Big Box drawer:** easily stack food containers and store larger items in your freezer.
- **Easy Access Shelf:** a pull-out glass shelf for easier access to everything inside your fridge.
- **Two cooling systems:** separately controllable fridge and freezer compartments

Technical Data

Built-in / Free-standing:	Free-standing
Door panel options:	Not possible
Height:	1756 mm
Width of the appliance:	912 mm
Depth:	732 mm
Net weight:	141.0 kg
Connection rating:	190 W
Fuse protection:	10 A
Door hinge:	left and right
Voltage:	220-240 V
Frequency:	50-60 Hz
Length electrical supply cord:	240.0 cm
Number of compressors:	1
Number of independent cooling systems:	2
Interior ventilator:	No
Reversible Door Hinge:	No
Number of Adjustable Shelves in fridge compartment:	3
Shelves for Bottles:	Yes
EAN code:	4242002818887
Brand:	Bosch
Product name / Commercial code:	KAN92LB35
Frost free system:	Fridge
Installation typology:	Free-standing
Included accessories:	2 x cold accumulator, 1 x egg tray



¹ Scale of Energy Efficiency Classes from A to G

Series 8, 175.6 x 91.2 cm, Black, Total No Frost KAN92LB35

The NoFrost side-by-side fridge-freezer with indoor electronics: saves you from defrosting.

Performance

- Energy consumption: 385 kWh kWh/yr.
- Total net capacity: 592 litres
- Net fridge capacity: 375 litres
- Noise level dB(A) re 1 pW: 43
- Climate class SN-T (suitable for ambient temperatures between 10 to 43°C)

Design features

- Plastic Integrated vertical handle
- Interior design with metal applications
- No Frost
- Automatic defrost fridge
- Two separate cooling circuits allow independent temperature control and prevents the transference of humidity between the fridge and freezer cavity
- Bright interior LED fridge light
- Removable magnetic door seals - easy to clean
- Optical and acoustic door open alarm
- Freezer malfunction warning signal: optical and acoustical

Freshness System

- ChillerBox - recommended storage area for meat and fish
- MultiAirflow system - improves circulation of air around the fridge
- Freezing capacity in 24 hours: 12 kg

Additional features

- 4 safety glass shelves of which 3 are height adjustable, 1 EasyLift glass shelf, Extendable glass shelf, not divided 2 shelves extendable
- Maximum freezer storage time in power failure: 12 hours
- Left hinged, Right hinged door
- Height adjustable front feet

Functions

- Separate, electronic temperature control with LED display
- SuperCool function
- SuperFreezing function with automatic deactivation
- Freezer malfunction warning signal: optical and acoustical warning system
- Holiday mode - saves energy when you're away a longer period of time
- AirFreshFilter with AntiBacterial filter to reduce odours and bacteria

Key features - Fridge section

- MultiAirflow system - improves circulation of air around the fridge, ChillerBox - recommended storage area for meat and fish
- 1 VitaFresh 0°C drawer - Fish and meat stay fresh for longer
- VitaFresh Plus container on telescopic rails and humidity control for prolonged food storage, 1 MultiBox drawer on telescopic rails -

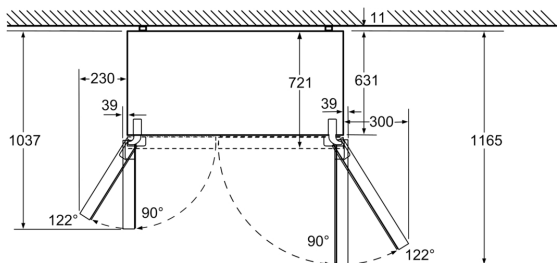
Transparent drawer with a corrugated bottom, ideal for storing fruits and vegetables.

- Door shelves in fridge door: 2 large and 3 small
- 3 x egg tray, 2 x cold accumulator
- 1 dairy compartment in door
- Bright interior LED fridge light
- Bottle rack

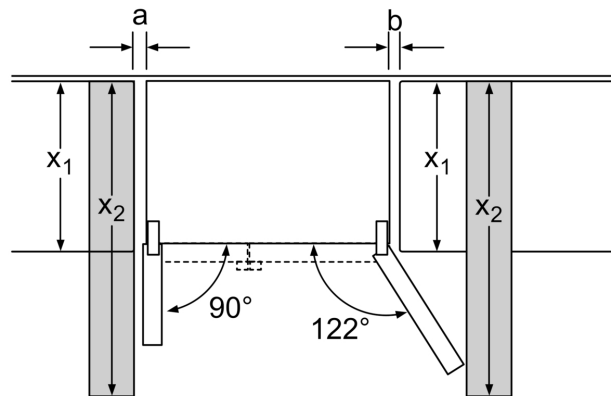
Key features - Freezer section

- 2 freezer drawers, drawers on telescopic rails (partially extendable)
- Twist ice dispenser in freezer
- Door trays in freezer door: 5
- To achieve the declared energy consumption, the distanceholders have to be used. As a result, the appliance depth increases by about 3.5 cm. The appliance used without the distance holder is fully functional, but has a slightly higher energy consumption.
- Dimensions: 175.6 cm H x 91.2 cm W x 73.2 cm D

**Series 8, 175.6 x 91.2 cm, Black,
Total No Frost
KAN92LB35**

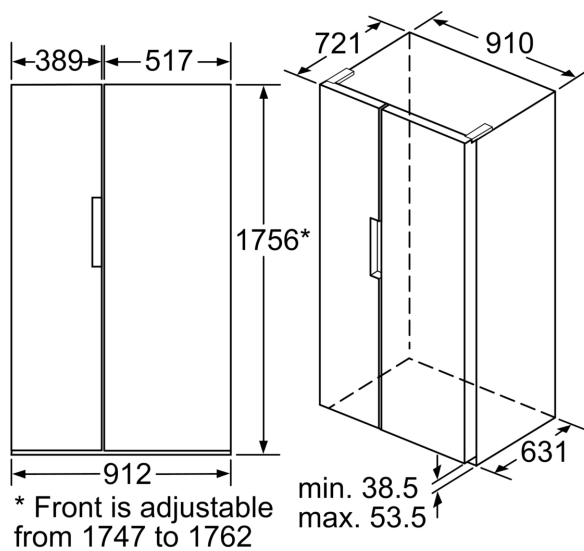


Chilling drawers can be pulled out completely at a door opening angle of 122°
measurements in mm



x_1 (unit depth)	a	b
600	39	39
650	39	53
700	39	85
x_2 (wall)	39	300

measurements in mm



min. 38.5
max. 53.5

measurements in mm