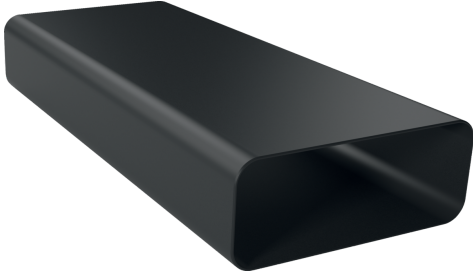


Flat duct, 1000 mm HEZ9VDSM2



- Straight flat-duct tube element (1,000mm. male)
- Aerodynamically optimized design to minimise pressure loss and maximise air flow rate. Easy-to-cut & easy-to-connect via the female connector sleeve element.
- The element complies with the Needle Flame Test (according to IEC 60695-11-5) & the V2 flammability class (according to UL94).

Technical Data

Dimensions of the packed product (HxWxD): 98 x 235 x 1030 mm
Pallet dimensions: 175.0 x 80.0 x 120.0
Standard number of units per pallet: 48
Net weight: 1.7 kg
Gross weight: 2.0 kg
EAN code: 4242005253821



Flat duct, 1000 mm
HEZ9VDSM2

measurements in mm

