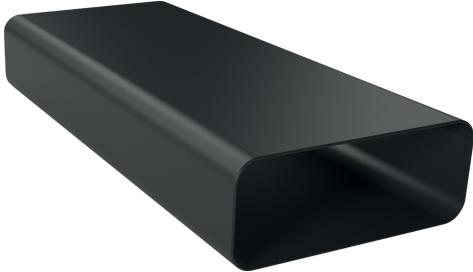


## Flat duct, 500 mm HEZ9VDSM1



- Straight flat-duct tube element (500mm, male)
- The element complies with the Needle Flame Test (according to IEC 60695-11-5) & the V2 flammability class (according to UL94).
- Aerodynamically optimized design to minimise pressure loss and maximise air flow rate. Easy-to-cut & easy-to-connect via the female connector sleeve element.

---

### Technical Data

Dimensions of the packed product (HxWxD): ..... 98 x 235 x 530 mm  
Pallet dimensions: ..... 175.0 x 80.0 x 120.0  
Standard number of units per pallet: ..... 96  
Net weight: ..... 0.8 kg  
Gross weight: ..... 1.0 kg  
EAN code: ..... 4242005253814

---



**Flat duct, 500 mm**  
**HEZ9VDSM1**

---

measurements in mm

