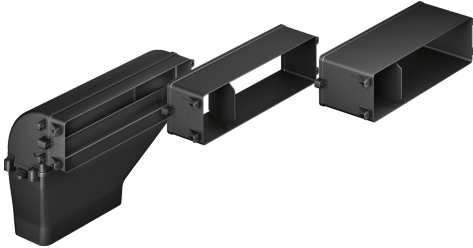


Exhaust kit HEZ381401



- Direct air outlet onto 220x90mm flat duct system or with 90° diverter element and outlet for continuation of ducting with 220x90mm flat duct. system.
- Includes:
 - 3 mountable depth adapters (40mm, 80mm, 120mm) for different worktop depths from 600mm to 750mm, 90° diverter element, connector element for continuation with 220x90mm flat ducting.

Technical Data

Dimensions of the packed product (HxWxD): 160 x 590 x 765 mm
Pallet dimensions: 175.0 x 80.0 x 120.0
Standard number of units per pallet: 20
Net weight: 3.8 kg
Gross weight: 3.8 kg
EAN code: 4242005088416

