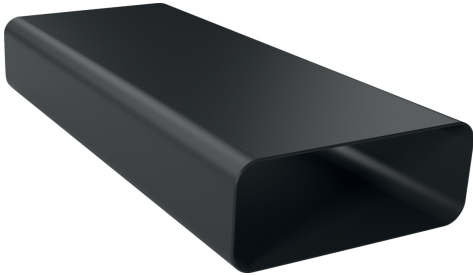


FLAT DUCT  
Z861SM2



- ✓ Straight tube 1000mm
- ✓ Z861SM2 Accessory Surface Cooking
- ✓ The element complies with the Needle Flame Test (according to IEC 60695-11-5) & the V2 flammability class (according to UL94).
- ✓ Straight flat-duct tube element (1,000mm. male)
- ✓ Aerodynamically optimized for minimised pressure losses and maximised flow rate. Easy-to-cut & easy-to-connect via the female connector sleeve element.

#### Features

##### Technical Data

Dimensions of the packed product (HxWxD): .....96x235x1030 mm  
Pallet dimensions: ..... 175.0 x 80.0 x 120.0  
Standard number of units per pallet: ..... 48  
Net weight: ..... 1.7 kg  
Gross weight: ..... 2.0 kg  
EAN code: .....4242004253563



FLAT DUCT  
Z861SM2

Dimensioned drawings

measurements in mm

