

**iQ500, Washer dryer, 8/5 kg  
WK14D490GB**



This built-in washer-dryer is equipped with short programs to get your laundry washed and dried in one go and autoDry for excellent drying results.

- ✓ autoDry: gentle, precise drying that saves energy.
- ✓ speedPack L: speed up your programmes. Or wash and dry in just 60 minutes.
- ✓ Energy efficiency class A: our most energy-efficient washer-dryer.
- ✓ iQdrive: efficient, durable and quiet.
- ✓ Keeps your washing machine clean - drumClean

**Features**

**Technical Data**

Energy Efficiency Class Wash/Dry cycle(Regulation): .....	E
Energy Efficiency Class Eco 40-60 programme (Regulation):	A
Weighted energy consumption in kWh per 100 full Wash/Dry cycles:	324 kWh/100 cycles
Weighted energy consumption in kWh per 100 washing cycles of eco 40-60 programme: .....	47 kWh/100 cycles
Maximum capacity in kg in a Wash/Dry cycle: .....	5.0 kg
Maximum capacity in kg in a wash cycle: .....	8.0 kg
The water consumption of the full wash and dry cycle in liters per cycle: .....	80 l
The water consumption of the eco programme in liters per cycle:	48 l
Duration of the full wash and dry cycle in hours and mins at rated capacity: .....	9:20 h
Duration of eco 40-60 programme in hours and mins at rated capacity: .....	3:38 h
Spin-drying efficiency class of eco 40-60 programme: .....	B
Airborne acoustical noise emissions : .....	68 dB(A) re 1pW
Airborne acoustical noise emission class: .....	A
Built-in / Free-standing: .....	Built-in
Removable top: .....	No
Door opening: .....	Left
Length electrical supply cord: .....	200 cm
Dimensions of the product: .....	825x595x525 mm
Weight: .....	56.6 kg
Drum volume: .....	53 l
EAN code: .....	4242003979747



## iQ500, Washer dryer, 8/5 kg WK14D490GB

### Features

- Wash&Dry

#### Performance

- Energy Efficiency Class Wash and Dry<sup>1</sup>: E
- Energy Efficiency Class Washing<sup>2</sup>: A
- Energy<sup>3</sup> / Water<sup>4</sup> Wash and Dry: 324 kWh / 80 litres
- Energy<sup>5</sup> / Water<sup>6</sup> Washing: 47 kWh / 48 litres
- Load capacity Wash and Dry / Washing: 1 - 5 kg / 1 - 8 kg
- Programme duration<sup>7</sup> Wash and Dry / Washing: 9:20 h:min / 3:38 h:min
- Spin drying efficiency class: EU19\_spin efficiency class: B
- Spin speed<sup>\*\*</sup>: 600 - 1400 rpm
- Noise level: 68 dB (A) re 1 pW
- Noise efficiency class: A

#### Programmes/functions

- Special programmes washing: drum clean with reminder, rapid 15 minute quick wash, hygiene care, mixed fabrics, drain / spin, rinse/spin
- Most common washing programmes can be used as solo-drying programme or as washing and drying in one go programme
- Standard programmes for drying: cottons, easy-care
- Special programmes drying: Refresh, Intensive dry, Low heat drying, Wash & Dry 60'

#### Key features

- varioSpeed: Up to 65% reduced washing cycle \*\*\*
- Options washing: Spin speed selection, extra rinse, myFavorite, night wash, speedPerfect, Start / Reload, Start / Pause, Temperature selection, prewash
- Options drying: Iron dry, Cupboard dry
- Drying options for most wash programmes
- autoDry function, and time selection options

#### Additional features

- Reload Function: Stop the washing machine to add any forgotten items of laundry to the drum.
- aquaStop: Siemens home appliance with lifetime warranty against water damage\*
- Large display for programme progress indication, temperature, spin speed, time remaining and 24 hours time delay, and indication of drying level
- waterPerfect Plus: for efficient use of water even with small loads thanks to intelligent sensor technology.
- Furniture door is reversible
- Fully electronic control dial for all wash and special programmes
- drum clean with reminder function
- drum interior light
- iQ Drive: innovative motor technology delivering energy efficiency, speed and durability
- Foam detection system
- Out of balance load adjustment
- End of cycle buzzer
- Electronic child safety package

- White door with 180° opening door
- Metal door catch
- Reload facility

#### Technical Information

- adjustable base height: 16 cm
- adjustable base depth: 8 cm
- Dimensions (H x W): 82.5 cm x 59.5 cm
- Appliance depth: 52.5 cm
- Appliance depth incl. door: 54.0 cm
- Appliance depth with open door: 97.5 cm

<sup>1 2</sup> Scale of Energy Efficiency Classes from A to G

<sup>3</sup> Energy consumption in kWh per 100 complete cycles (in Eco 40-60 programme)

<sup>4</sup> Water consumption in litres per complete cycle (in Eco 40-60 programme)

<sup>5</sup> Energy consumption in kWh per 100 washing cycles (in Eco 40-60 programme)

<sup>6</sup> Weighted water consumption in litres per washing cycle (in Eco 40-60 programme)

<sup>7</sup> Duration of Eco 40-60 programme, Wash and Dry cycle / Wash only cycle

\*\* The maximum spin speed is automatically reduced in the case of laundry imbalances.

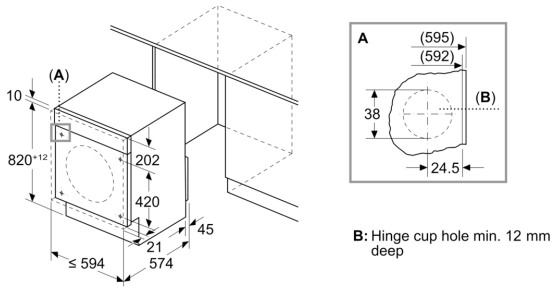
\* Please find warranty terms under the additional warranties section of our website.

\*\*\* Comparison between the program duration of Easy-care 40°C and the program duration of Easy-care 40°C + activated varioSpeed option

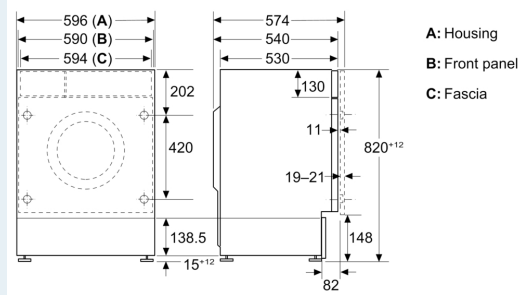
iQ500, Washer dryer, 8/5 kg  
WK14D490GB

Dimensioned drawings

Measurements in mm



Measurements in mm



Measurements in mm

