

iQ300, Washer dryer, 8/5 kg
WK14D260GB



This built-in washer-dryer is equipped with short programs to get your laundry washed and dried in one go and autoDry for excellent drying results.

- ✓ autoDry: gentle, precise drying that saves energy.
- ✓ speedPack L: speed up your programmes. Or wash and dry in just 60 minutes.
- ✓ Energy efficiency class A: our most energy-efficient washer-dryer.
- ✓ Wash & Dry 45/60: fast, efficient washing and drying in 45 or 60 minutes.
- ✓ Capacity 8/5kg: wash loads of up to 8kg, and dry up to 5kg.

Features

Technical Data

Energy Efficiency Class Wash/Dry cycle(Regulation): E
 Energy Efficiency Class Eco 40-60 programme (Regulation): A
 Weighted energy consumption in kWh per 100 full Wash/Dry cycles:
 324 kWh/100 cycles
 Weighted energy consumption in kWh per 100 washing cycles of
 eco 40-60 programme: 47 kWh/100 cycles
 Maximum capacity in kg in a Wash/Dry cycle: 5.0 kg
 Maximum capacity in kg in a wash cycle: 8.0 kg
 The water consumption of the full wash and dry cycle in liters per
 cycle: 80 l
 The water consumption of the eco programme in liters per cycle:
 48 l
 Duration of the full wash and dry cycle in hours and mins at rated
 capacity: 9:20 h
 Duration of eco 40-60 programme in hours and mins at rated
 capacity: 3:38 h
 Spin-drying efficiency class of eco 40-60 programme: B
 Airborne acoustical noise emissions : 68 dB(A) re 1pW
 Airborne acoustical noise emission class: A
 Built-in / Free-standing: Built-in
 Removable top: No
 Door opening: Left
 Length electrical supply cord: 200 cm
 Dimensions of the product: 825x595x525 mm
 Weight: 56.6 kg
 Drum volume: 53 l
 EAN code: 4242003978009



iQ300, Washer dryer, 8/5 kg WK14D260GB

Features

Performance

- Energy Efficiency Class Wash and Dry¹: E
- Energy Efficiency Class Washing²: A
- Energy³ / Water⁴ Wash and Dry: 324 kWh / 80 litres
- Energy⁵ / Water⁶ Washing: 47 kWh / 48 litres
- Load capacity Wash and Dry / Washing: 1 - 5 kg / 1 - 8 kg
- Programme duration⁷ Wash and Dry / Washing: 9:20 h:min / 3:38 h:min
- Spin drying efficiency class: EU19_spin efficiency class: B
- Spin speed^{**}: 600 - 1400 rpm
- Noise level: 68 dB (A) re 1 pW
- Noise efficiency class: A

Programmes/functions

- Special programmes washing: Drum clean, rapid 15 minute quick wash, hygiene care, mixed fabrics, drain / spin, rinse/spin
- Most common washing programmes can be used as solo-drying programme or as washing and drying in one go programme
- Standard programmes for drying: cottons, easy-care
- Special programmes drying: Intensive dry, Low heat drying, Wash & Dry 60'

Key features

- varioSpeed: Up to 65% reduced washing cycle ***
- Options washing: Spin speed selection, child lock, myFavorite, speedPerfect, Start / Pause, Temperature selection
- Options drying: Iron dry, Cupboard dry
- Drying options for most wash programmes
- autoDry function

Additional features

- waterPerfect Plus: for efficient use of water even with small loads thanks to intelligent sensor technology.
- Furniture door is reversible
- Fully electronic control dial for all wash and special programmes
- DrumClean programme without reminder function
- iQ Drive: innovative motor technology delivering energy efficiency, speed and durability
- Foam detection system
- Out of balance load adjustment
- End of cycle buzzer
- Electronic child safety package
- White door with 180° opening door
- Metal door catch

Technical Information

- adjustable base height: 16 cm
- adjustable base depth: 8 cm
- Dimensions (H x W): 82.5 cm x 59.5 cm
- Appliance depth: 52.5 cm
- Appliance depth incl. door: 54.0 cm
- Appliance depth with open door: 97.5 cm

^{1 2} Scale of Energy Efficiency Classes from A to G

³ Energy consumption in kWh per 100 complete cycles (in Eco 40-60 programme)

⁴ Water consumption in litres per complete cycle (in Eco 40-60 programme)

⁵ Energy consumption in kWh per 100 washing cycles (in Eco 40-60 programme)

⁶ Weighted water consumption in litres per washing cycle (in Eco 40-60 programme)

⁷ Duration of Eco 40-60 programme, Wash and Dry cycle / Wash only cycle

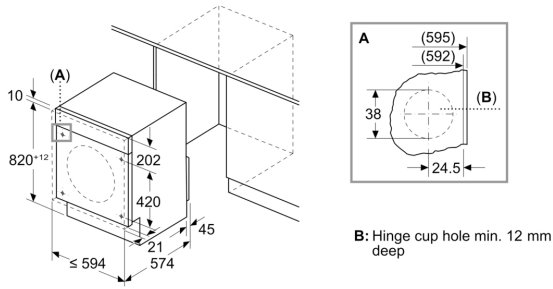
** The maximum spin speed is automatically reduced in the case of laundry imbalances.

*** Comparison between the program duration of Easy-care 40°C and the program duration of Easy-care 40°C + activated varioSpeed option

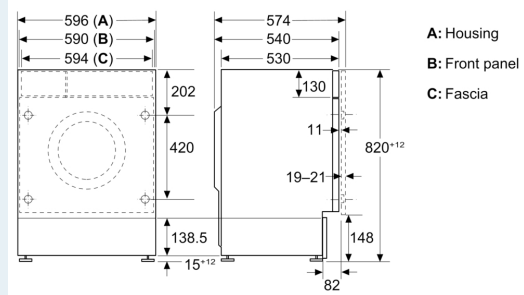
iQ300, Washer dryer, 8/5 kg WK14D260GB

Dimensioned drawings

Measurements in mm



Measurements in mm



Measurements in mm

