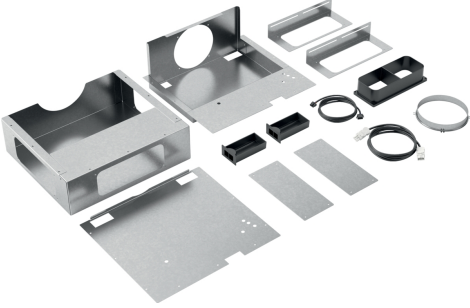


## Installation accessory LZ21WWM11



✓ Includes necessary installation parts to install the motor up to 3m away from the ventilation unit. Note ducting is required separately.

### Features

#### Technical Data

Dimensions of the packed product (HxWxD): .....455x335x690 mm  
Pallet dimensions: .....200.0 x 80.0 x 120.0  
Standard number of units per pallet: ..... 12  
Weight: ..... 5.8 kg  
Gross weight: ..... 8.8 kg  
EAN code: .....4242003886540



## Installation accessory LZ21WWM11

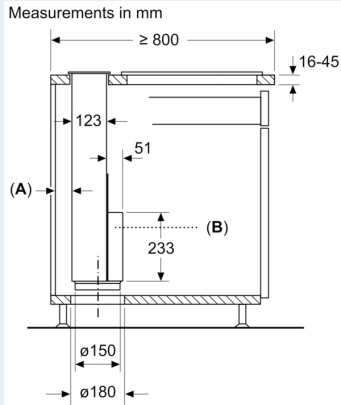
### Features

#### Optional accessories

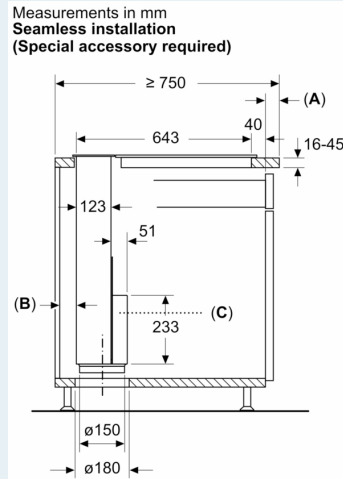
- Includes necessary installation parts to install the motor up to 3m away from the ventilation unit. Note ducting is required separately.

Installation accessory  
LZ21WWM11

Dimensioned drawings

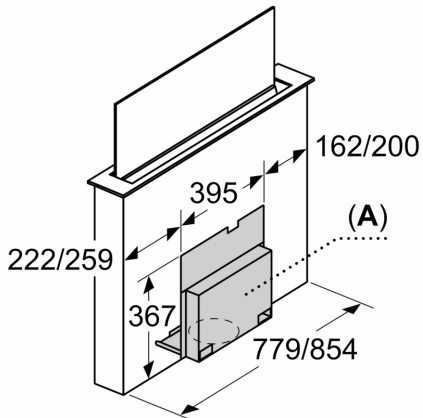


A: ≥ 20 mm between the Guided Air suction area and a cabinet wall  
B: Cover must always be accessible



A: Worktop overhang protruding beyond unit carcass  
B: ≥ 20 mm between the Guided Air suction area and a cabinet wall  
C: Cover must always be accessible

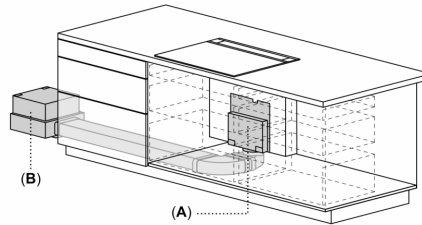
measurements in mm



A: Access to the entire cover must be ensured even after installation.

The cover can be installed on the front or rear of the appliance.

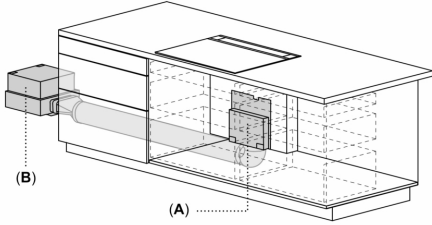
Example



A: Cover must always be accessible  
B: Clearance between motor unit and appliance max. 3 mm  
Motor unit must always be accessible

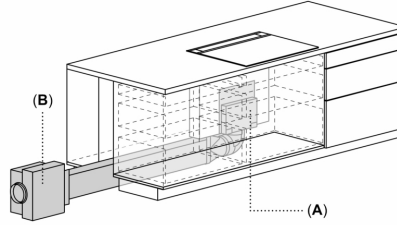
## Dimensioned drawings

Example



A: Cover must always be accessible  
 B: Clearance between motor unit and appliance max. 3 m  
 Motor unit must always be accessible

Example



A: Cover must always be accessible  
 B: Clearance between motor unit and appliance max. 3 m  
 Motor unit must always be accessible

## Measurements in mm

