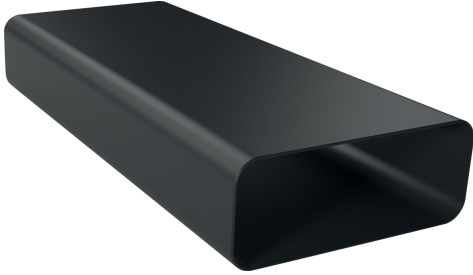


Flat duct HZ9VDSM2



- ✓ Straight flat-duct tube element (1,000mm. male)
- ✓ Aerodynamically optimized for minimised pressure losses and maximised flow rate. Easy-to-cut & easy-to-connect via the female connector sleeve element.
- ✓ The element complies with the Needle Flame Test (according to IEC 60695-11-5) & the V2 flammability class (according to UL94).

Features

Technical Data

Dimensions of the packed product (HxWxD):98x235x1030 mm
Pallet dimensions: 175.0 x 80.0 x 120.0
Standard number of units per pallet: 48
Weight: 1.7 kg
Gross weight: 2.0 kg
EAN code:4242003890660



Flat duct
HZ9VDSM2

Dimensioned drawings

measurements in mm

