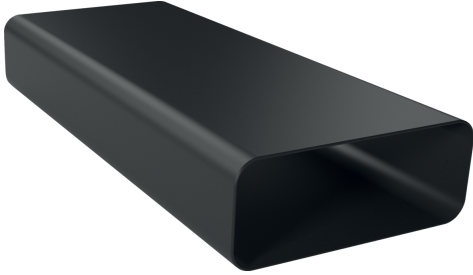


Flat duct HZ9VDSM1



- ✓ Straight flat-duct tube element (500mm, male)
- ✓ The element complies with the Needle Flame Test (according to IEC 60695-11-5) & the V2 flammability class (according to UL94).
- ✓ Aerodynamically optimized for minimised pressure losses and maximised flow rate. Easy-to-cut & easy-to-connect via the female connector sleeve element.

Features

Technical Data

Dimensions of the packed product (HxWxD):98x235x530 mm
Pallet dimensions: 175.0 x 80.0 x 120.0
Standard number of units per pallet: 96
Weight: 0.9 kg
Gross weight: 1.1 kg
EAN code:4242003890653



Flat duct
HZ9VDSM1

Dimensioned drawings

measurements in mm

