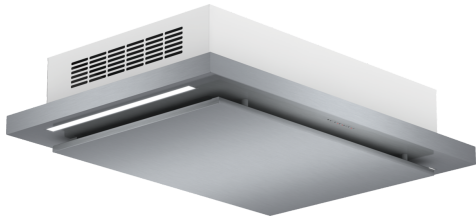


**Series 6, Ceiling cooker hood, 100 cm, Stainless steel
DID106T50**



DSZ500P Long Life odor filter (replacement)
DHZ5418 cable guidance frame

Suspended ceiling hood: in recirculation mode.

- **LED Illumination:** The energy-saving lighting provides bright and clear lighting for the hob area.
- **Intensive speed setting:** removes strong kitchen odours quickly and effectively.
- **Intensive Setting:** the powerful way to beat intense steam during cooking, with automatic revert.
- **Dishwasher safe aluminum mesh filters**

Typology:Island/Ceiling
 Length electrical supply cord: 0.0 cm
 Minimum distance above an electric hob: 600 mm
 Minimum distance above a gas hob: 900 mm
 Net weight: 27.3 kg
 Type of control:Electronic
 Number of speed settings: 3-stages + intensive setting
 Boost position output recirculating: 850.0 m³/h
 Max. air recirculation: 780 m³/h
 Number of lights: 2
 Diameter of air outlet: 150 mm
 Grease filter material:Washable aluminium
 EAN code: 4242002909028
 Connection rating: 192 W
 Fuse protection: 16 A
 Voltage: 220-240 V
 Frequency: 50 Hz
 Plug type: no plug (electrical connection by electrician)
 Installation typology: Built-in



Series 6, Ceiling cooker hood, 100 cm, Stainless steel DID106T50

Suspended ceiling hood: in recirculation mode.

Key Information

- Electronic control
- Electronic control via Soft touch button control
- Interval operation
- Capacitor motor

Design

- 100 cm wide
- Brushed steel
- Installation: Ceiling

Features

- Soft touch button control with Electronic display
- 3 power levels & intensive setting
- Automatic intensive revert (6mins)
- Automatic after running (Automatic after running (30 min))
- Rim ventilation
- 2 x 6W LED
- Dimmer function
- Neutral white lights
- 2 removable metal grease filter cassettes
- Filter cover stainless steel, Removable metal grease filters
- Saturation indicator for metal and charcoal filter
- Filter saturation indicator

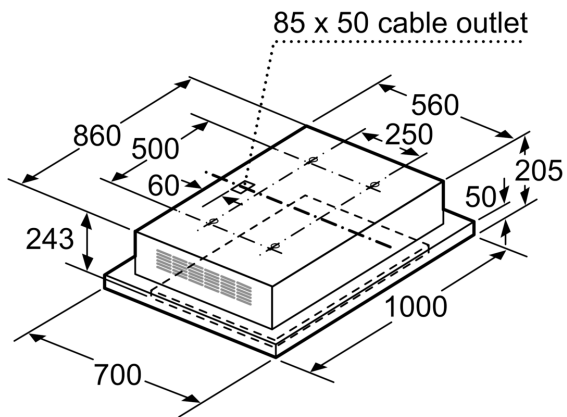
Performance/technical information

- Suitable for recirculated operation
- Power rating: 192 W
- Dimensions recirculating (HxWxD): 243-243 x 1000 x 700 mm
- Light Intensity: 345 lux
- Colour Temperature: 4000 K

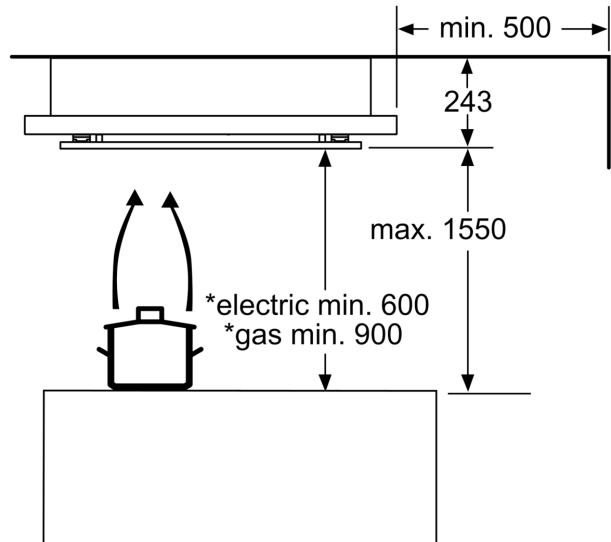
Accessories

- For recirculated extraction charcoal filter (accessory) needed

**Series 6, Ceiling cooker hood, 100 cm, Stainless steel
DID106T50**



measurements in mm



* from upper edge of pan support

measurements in mm