



Color Variants

CV482105

Optional accessories

CA050300

CA051301

CA052300

CA055300

CA084010

CA282112

Required installation accessories

CKI440000

CKI440010

Installation Accessories

CA082011

CA082061

CA082071

CA084010



Flex function for combining the rectangular cooking areas
Flexible positioning of cookware inside combined cooking areas
Highly efficient ventilation system integrated in the cooktop
Fully automatic ventilation system functions
Large-scale metal grease filter, easy to remove, dishwasher-safe
Energy-saving, low-noise fan
Air extraction or recirculation system
Integrated activated charcoal filter easily removable from above for air recirculation system
Solid stainless steel knob, also selectable with black robust finishing, for precise control and personalisation
Frameless for flush installation

Cooking zones

2 flex induction cooking areas 24x20 cm (2200 W, with booster 3700 W), linked together 24x40 cm (3300 W, with booster 3700 W).
2 flex induction cooking areas 24x20 cm (2200 W, with booster 3700 W), linked together 24x40 cm (3300 W, with booster 3700 W).

Performance of ventilation system

Performance and noise level, output level 3/Intensive:
Air output according to EN 61591.
Sound power level according to EN 60704-3.
Air extraction:
532 / 636m³/h.
70 / 74 dB (A) re 1 pW.
Air recirculation:
487 / 611m³/h.
67 / 72dB (A) re 1 pW.
55 / 61 dB (A) re 20 µPa.

Handling

Control knobs with illuminated ring, cooking zone and output level markings.
Electronic power control in 12 stage (1...12).
User friendly control with two color display (white / orange).
Control of ventilation system with 3 electronically controlled power levels and 1 intensive mode.

Features

Flex function for rectangular cooking areas.
Frying sensor function.
Booster function.
Automatic sensor-controlled performance adjustment of the ventilation system.
Automatic activation of the ventilation system when a cooking zone is used.
Interval ventilation, 6 min.
Automatic sensor-controlled or manual run-on function.
Grease filter and activated charcoal filter saturation indicator.
Removable, dishwasher-safe grease filter unit.
High-grade black zinc die-casted cover for ventilation system, dishwasher-safe.
Fan technology with highly efficient, brushless DC motor.
Airflow-optimised interior for efficient air circulation.
Stopwatch.
Short-term timer.
Memory function.

Characteristics

Product name/family

Cooking zone ceramic

Built-in / Free-standing

Built-in

Energy input

Electric

Total number of positions that can be used at the same time
4

Type of control setting devices

Required niche size for installation (HxWxD)

Width of the appliance
805

Dimensions

227x805x521

Dimensions of the packed product (HxWxD)

430 x 1090 x 670

Net weight

27.1

Gross weight

32.0

Residual heat indicator

Separate

Location of control panel

External

Type of external control possibility

Basic surface material

Ceramic

Color of surface

Black

Color of frame

Length electrical supply cord

150.0

Knob Material

Sealed Burners

No

heating with booster

All

Type of pan support

Power of heating element (kW)

Power of 2nd heating element (kW)

3.3

Power of 3rd heating element (kW)

Power of 4th heating element (kW)

Power of 5th heating element (kW)

Power of 3rd heating element (kW in boost)

Number of speed settings

3-stages + intensive setting

Maximum output air extraction

532

Boost position output recirculating

611.0

Maximum output recirculating air

487

Boost position air extraction

636

Noise level

70

Diameter of air outlet

Grease filter material

Odour filter

No

Operating Mode

Convertible

Grease filter type

Clean filter reminders

Yes

Fuse protection

Voltage

220-240

Frequency

50; 60

Universal Product Code

Included accessories

Delay Shut off modes

Consumption and connection features

created on 2025-08-23

Page 1

Options menu.

Power management.

Selected digital services (Gaggenau Home Connect)

Remote control and monitoring of ventilation.

Remote monitoring of cooking zones.
Remote diagnostics.

Integrated WiFi module for digital services
(Home Connect).

The availability of the Home Connect functionality depends on the availability of the Home Connect Services in your country. Home Connect Services are not available in every country – for further information please check: www.home-connect.com

Product rating

Energy efficiency class A at a range of energy efficiency classes from A+++ to D.

Energy consumption 56.9 kWh/year.

Ventilation efficiency class A.

Illumination efficiency class -.

Grease filter efficiency class B.

Sound level min. 61 dB / max. 70 dB normal mode.

Safety

Operation indicator.

Pot detection.

2 stage Hh residual heat indicator for each zone
Child lock.

Safety shut-off.

Detachable, dishwasher-safe two-stage overflow protection.

Removable overflow container, 0,9-litre capacity, dishwasher-safe.

Planning notes

Bottom cabinet width: min. 60 cm.

Worktop depth: min. 60 cm with unducted recirculation, min. 65 cm with ducted recirculation/extraction.
Immersion depth 227 mm.

The unducted recirculation set CA 082 011 requires a vertical aperture of min. 25 mm behind the backpanel of the furniture. Suggested for ideal performance are 50 mm.

The air outlet on the backside of the appliance can directly be accessed with a flat duct element (DN 150).

In air extraction a one-way flap with a maximum opening pressure of 65 Pa should be installed.

For optimum performance in air recirculation we recommend an outflow surface area of at least 400 cm².

Operates with magnetic (induction) iron pots and pans only. For an optimal heat distribution, the use of sandwich bottom cookware is recommended.

Special accessories (order as spare parts):
Part No. 17006018 Frying sensor pan, ø 20 cm Part No. 17006184 Frying sensor pan, ø 24 cm

The equivalent ducting length to ensure good performance is Lmax 28 m.

Appliance must be fixed from underneath.
Appliance weight: approx. 27.

The appliance must be freely accessible from below.

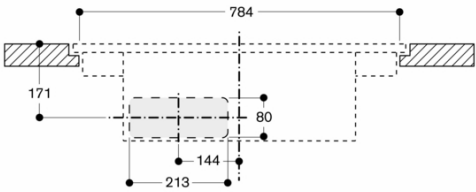
When installing a ventilation hood with air extraction mode and a chimney-vented fireplace, the hood's power supply line needs to feature a suitable safety switch.

Installation is possible in worktops made of stone, synthetics or solid wood. Heat resistance and watertight sealing of the cut edges must be observed. Concerning other materials please consult the worktop manufacturer.

The bearing capacity and stability, in the case of thin worktops in particular, must be supported using suitable substructures. Take into account the appliance weight and additional loads. The groove must be continuous and even, so that uniform placing of the appliance on the gasket is ensured. Do not use discontinuous lining. Joint width may vary due to dimensional tolerances of the glass ceramic

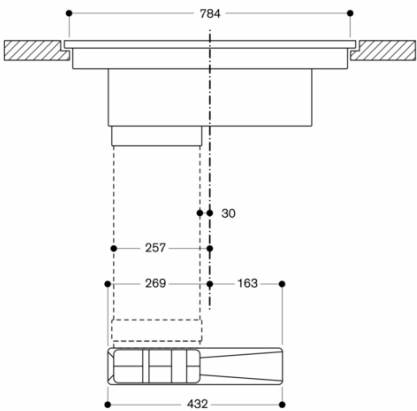
GAGGENAU

Front view – furniture cut-out for unducted recirculation; flush (CA 082 010)

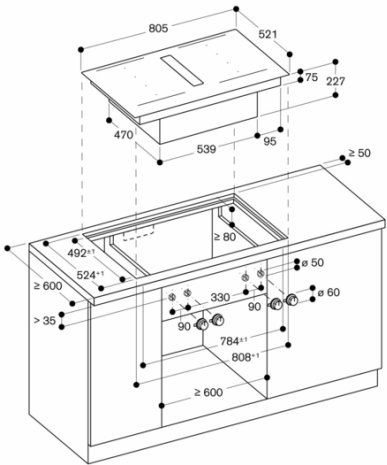


Measurements in mm

Front view of CV 482 with ducted recirculation

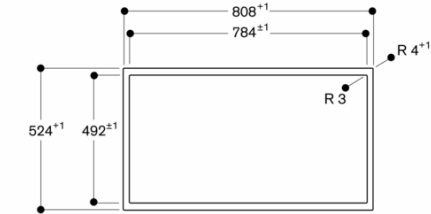


Measurements in mm



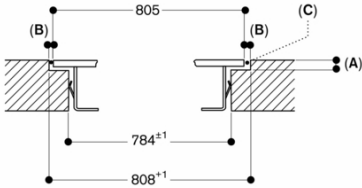
Measurements in mm

View from above



measurements in mm

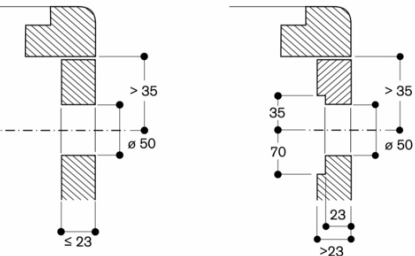
Longitudinal section



A: 6.5^{+0.5}
B: 1.5
C: Fill with silicone

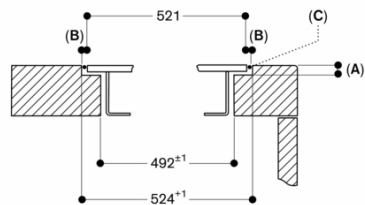
measurements in mm

Installation of the control knob; flush installation



measurements in mm

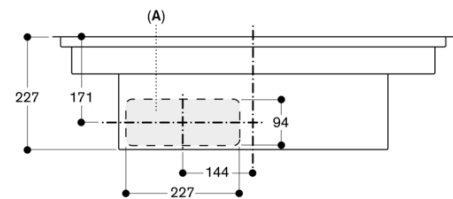
Cross-section



A: 6.5^{+0.5}
B: 1.5
C: Fill with silicone

measurements in mm

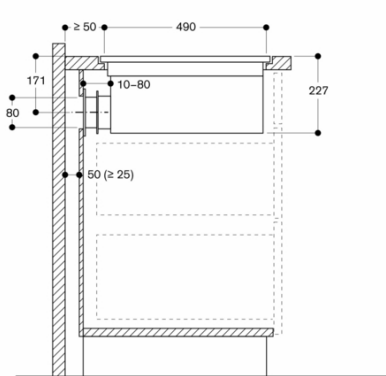
Front view



A: Connected directly at the rear

measurements in mm

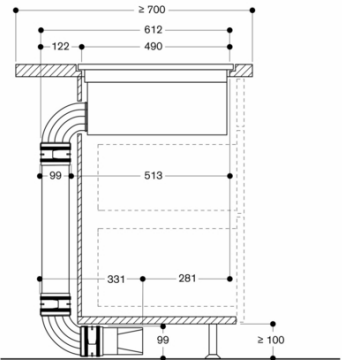
Side view with unducted recirculation; flush installation



Not recommended for non-thermally insulated outer wall or floor ($U \geq 0.5 \text{ W/m}^2\text{K}$)

Measurements in mm

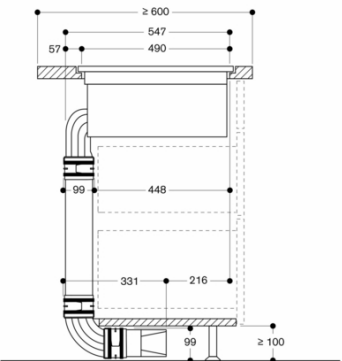
Side view with kit ducted air recirculation 700 mm worktop depth; flush installation



Not recommended for non-thermally insulated outer wall or floor ($U \geq 0.5 \text{ W/m}^2\text{K}$)

Measurements in mm

Side view with kit ducted air recirculation 600 mm worktop depth; flush installation



Not recommended for non-thermally insulated outer wall or floor ($U \geq 0.5 \text{ W/m}^2\text{K}$)

Measurements in mm