



AL400122

#### Optional accessories

AA400510:

Window contact switch with cable

#### installation accessories

AA400510:

Window contact switch with cable

AA409431:

Furniture support for AL400 120cm

AD704050:

Air collector box flat duct AL 400

AD754049:

Adapter for AL round 2x DN150

AD854050:

Connection piece for AL 2x flat 150mm

#### Table ventilation 400 series

120 cm, Stainless steel

AL400122

- When not in use it can be completely lowered into the worktop blends elegantly into worktop
- Perfect Integration with Vario Cooktops 400 series
- Precision crafting of 3 mm stainless steel
- For surface mounting with a visible edge or for flush mounting
- Telescopic table ventilation for combination with all Gaggenau cooktops, completely retractable when not in use

Can be combined perfectly with all Vario cooktops 400 series

Dimmable, neutral white surface LED light for ideal illumination of the whole cooktop

Precision crafting of 3 mm stainless steel

For surface installation with a visible edge or for flush installation

Motorless, can be combined with Gaggenau BLDC remote fan units

#### Output

Power levels depend on the remote fan unit.

#### Features

Three electronically controlled power levels and an intensive mode.

Interval ventilation, 6 min.

Run-on function, 6 min

Grease filter saturation indicator.

2 large-scale metal grease filters included, easy to remove, dishwasher-safe.

Grease drip trays, easy to remove and dishwasher-safe.

Neutral white surface LED light (3600 K), continuously dimmable.

Lamp output 4 x LED light bars 10W.

Illuminance: 400 lx

Flexible connection options to the remote fan unit: at the bottom, at the front or at the back.

In all the options, it is possible to have space for drawers in front of the table ventilation.

#### Product rating

The table ventilation is recommended only in recirculation mode for EU countries, the consumption data is not mandatory in this mode.

#### Planning notes

Combinable with all cooktops Vario 400 series and 400 series.

Maximum cooktops width: 120 cm.

It is recommended to use two remote fan units so that sufficient vapour captation will be ensured.

In EU countries due to legislation EU 66/2014 only air recirculation is recommended.

Depending on the type of installation, the corresponding accessories must be ordered separately.

For optimum performance in air recirculation we recommend an outflow surface area of at least 800 cm². 400 cm² for each remote fan unit.

Operation of Vario cooking appliances only possible without appliance cover.

Max. output of cooktops 18 kW.

The table ventilation must have its own worktop cut-out.

The bearing capacity and stability, in the case of thin worktops in particular, must be supported using suitable substructures. Take into account the appliance weight and additional loads.

The remaining surface of the worktop (min. 50 mm) between the cut-outs must be reinforced with a support. It is recommended to use furniture support AA 409 401/431.

Additional instructions for flush installation:

Installation is possible in worktops made of stone, synthetics or solid wood. Heat resistance and watertight sealing of the cut edges must be observed. Concerning other materials please consult the worktop manufacturer.

Depending on the type of installation, ovens can be combined with the table ventilation.

When installing a ventilation hood with air extraction mode and a chimney-vented fireplace, the hood's power supply line needs to feature a suitable safety switch.

The control unit should be accessible and be secured to a panel of the cabinet that avoids any risk of flooding.

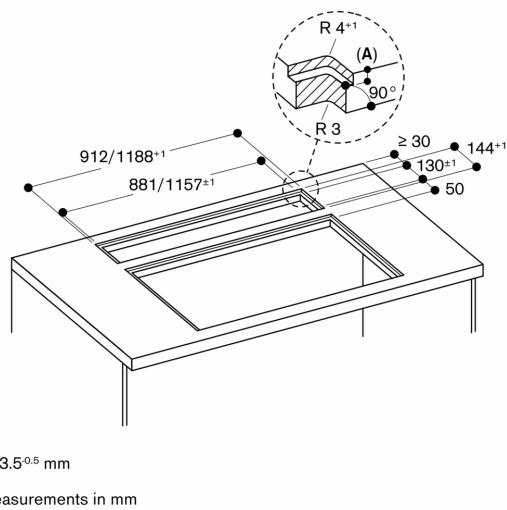
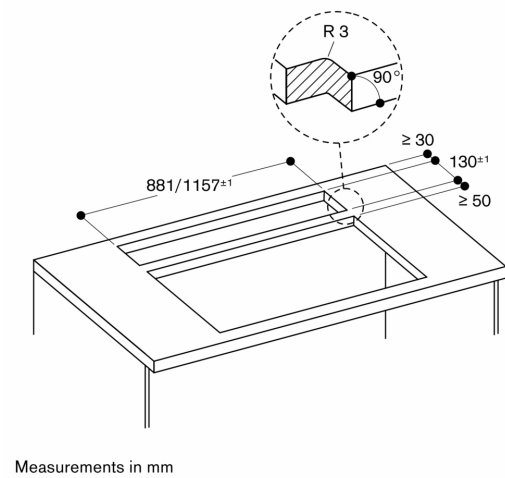
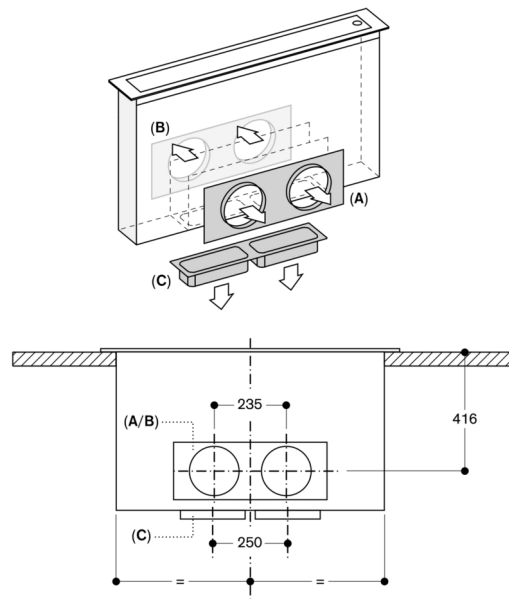
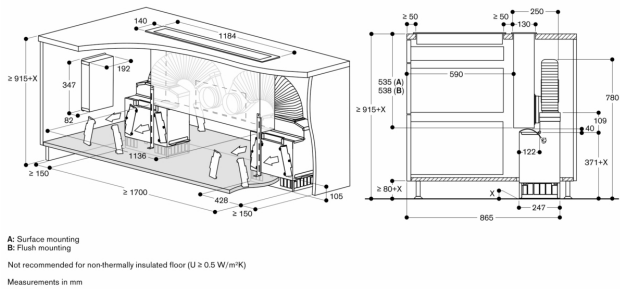
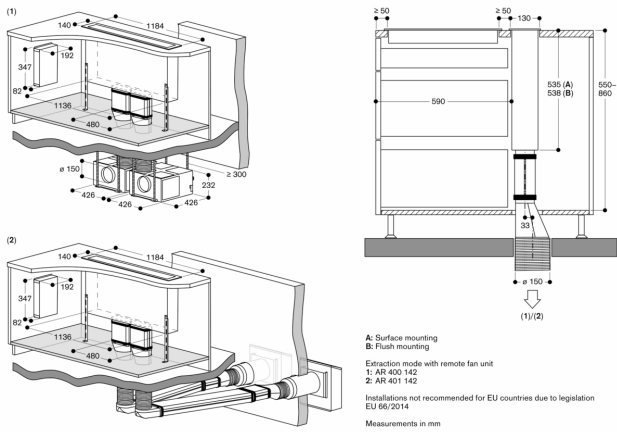
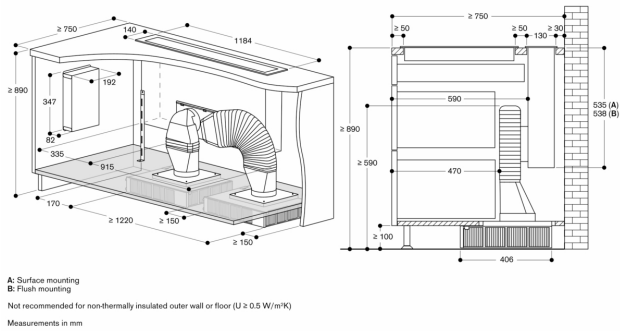
#### Connection

Total connected load 65 W.

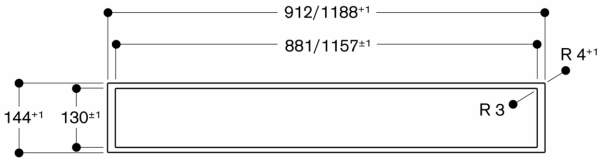
Connecting cable 1.7 m with plug.

Network cable 1,2 m.

The equivalent ducting length to ensure good performance is Lmax 19 m.

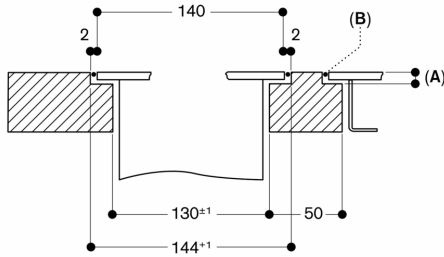


View from above



Measurements in mm

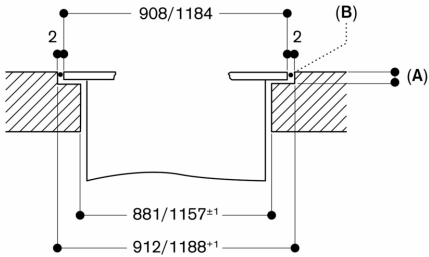
Cross section



A: 3.5<sup>0.5</sup> mm  
B: Fill with silicone

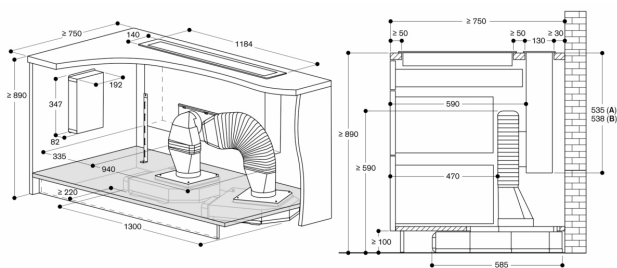
Measurements in mm

Longitudinal section



A: 3.5<sup>0.5</sup> mm  
B: Fill with silicone

Measurements in mm



A: Surface mounting  
B: Flush mounting  
Measurements in mm

AA 409 401/431 furniture support

