

iQ500, integrated rangehood, 70 cm, Stainless steel LB78574AU



The powerful canopy rangehood is concealed above the cooktop.

- ✓ LED light: Optimal visibility and atmosphere when cooking.
- ✓ The highly efficient 730 m³/h extraction rate provides ideal air quality in the kitchen.
- ✓ The intensive setting temporarily increases the extraction rate when kitchen vapour is especially intense, with automatic revert to previous setting after 6 min.

LZ55651	Standard odor filter (replacement)
LZ55750	Standard recirculation kit
LZ10ITP00	Long Life odor filter (replacement)
LZ11ITD11	Long Life recirculation kit external
LZ11IXB16	Clean Air Plus odor filter (replacement)
LZ11IXC16	Clean Air Plus recirc. kit external

Typology: Built-in/Built-under
 Length electrical supply cord: 150.0 cm
 Min. required niche size for installation (HxWxD): 418mm x 676.0mm x 264mm mm
 Minimum distance above an electric cooktop: 600 mm
 Minimum distance above a gas cooktop: 650 mm
 Net weight: 9.0 kg
 Type of control: Electronic
 Number of power settings: 3-stages + intensive setting
 Max. ducted extraction: 630 m³/h
 Boost position output recirculating: 664 m³/h
 Max. recirculation: 571 m³/h
 Boost position air extraction: 730 m³/h
 Number of lights: 2
 Noise level: 66 dB(A) re 1 pW
 Diameter of air outlet: 150 / 120 mm
 Grease filter material: Washable aluminium
 EAN code: 4242003700853
 Power supply: 277 W
 Fuse protection: 3 A
 Voltage: 220-240 V
 Frequency: 50 Hz
 Plug type: AU plug
 Installation type: Built-in



iQ500, integrated rangehood, 70 cm, Stainless steel LB78574AU

Design & Innovation

- Appliance colour: Stainless steel
- Electronic controls with low-lift push buttons
- 2 x 1 Watt LED lights
- metal grease filters with stainless steel cover

Convenience

- low-lift push buttons for power and light

Power and Mode of Operation

- Suitable for ducted and re-circulating operation
- Accessory required for recirculation mode: Standard recirculation kit
- Extraction rate according to EN 61591 ø 15 cm: max. Normal use 630 m³/h. Intensive 730 m³/h
- Noise min./max. Normal Level: 53/66 dB
- 3 power levels plus intensive setting
- Intensive operation automatic revert - 6min
- Rim ventilation
- Twin channel high performance fan motor

Cleaning

- Dishwasher safe metal grease filters

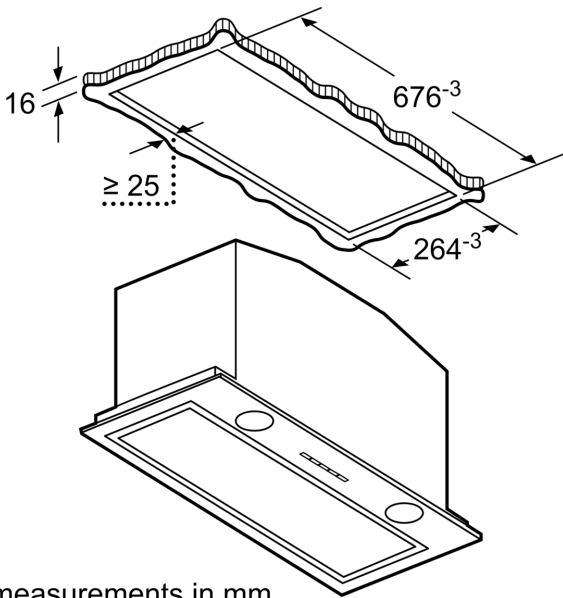
Safety and Quality

- Noise level according to EN 60704-3 exhaust air:
- Max. normal use:66dB(A) re 1 pW
- Intensive:69 dB(A) re 1 pW

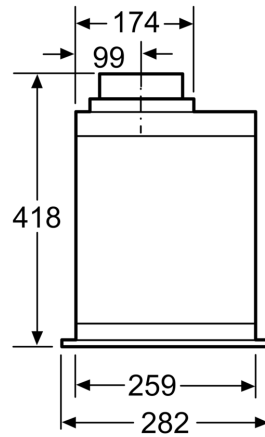
Dimensions (HxWxD)

- For installation in a kitchen cabinet
- 120 or 150 mm tube connection diameter
- Appliance dimensions (HxWxD): 418 x 700 x 282 mm
- Built-in dimensions (HxWxD): 418 x 676 x 264 mm
- Electrical cable length 1.5 m
- Power rating: 277 W

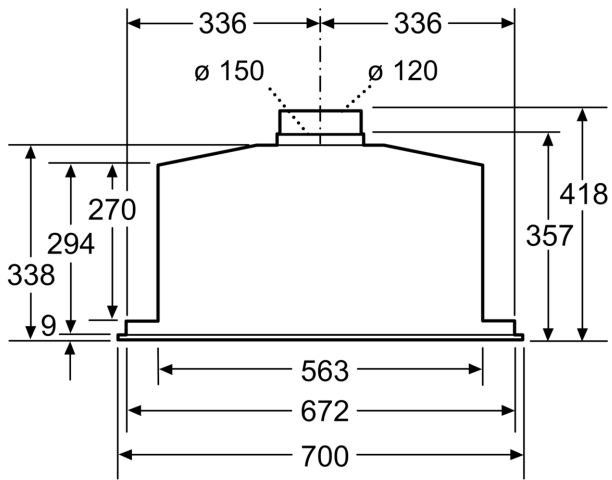
iQ500, integrated rangehood, 70 cm, Stainless steel
LB78574AU



measurements in mm

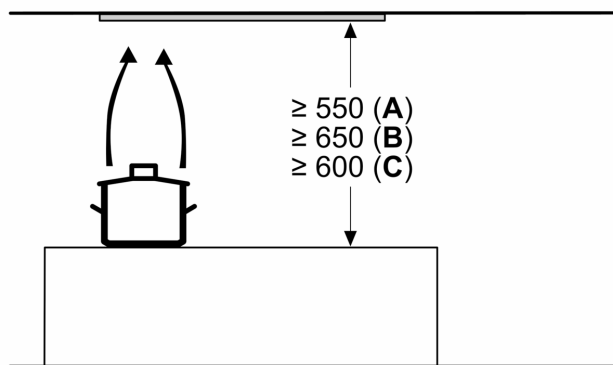


measurements in mm



measurements in mm

Measurements in mm



A: Electric

B: Gas - from upper edge of pan support

C: Electric - for Australia and New Zealand