



**BOSCH**

Register your  
new device on  
MyBosch now and  
get free benefits:  
**[bosch-home.com/  
welcome](https://bosch-home.com/welcome)**



# Tumble dryer

**WQG24502GB**

**[en]** User manual and installation instructions



**You can find additional information and explanations online.  
Scan the QR code on the title page.**



## Table of contents

<b>1 Safety .....</b>	<b>3</b>		
1.1 General information .....	3		
1.2 Intended use .....	3		
1.3 Restriction on user group .....	3		
1.4 Safe installation .....	4		
1.5 Safe use .....	6		
1.6 Safe cleaning and maintenance .....	8		
<b>2 Preventing material damage .....</b>	<b>9</b>		
<b>3 Environmental protection and saving energy .....</b>	<b>9</b>		
3.1 Disposing of packaging .....	9		
3.2 Saving energy .....	10		
3.3 Energy saving mode .....	10		
<b>4 Installation and connection .....</b>	<b>10</b>		
4.1 Unpacking the appliance .....	10		
4.2 Contents of package .....	10		
4.3 Requirements for the installation location .....	10		
4.4 Water outlet hose .....	11		
4.5 Aligning the appliance .....	13		
4.6 Connecting the appliance to the electricity supply .....	13		
<b>5 Familiarising yourself with your appliance .....</b>	<b>14</b>		
5.1 Appliance .....	14		
5.2 Control panel .....	15		
<b>6 Display .....</b>	<b>15</b>		
<b>7 Buttons .....</b>	<b>17</b>		
<b>8 Programmes .....</b>	<b>18</b>		
8.1 Automatic programmes .....	18		
8.2 Timed programmes .....	19		
<b>9 Accessories .....</b>	<b>20</b>		
<b>10 Laundry .....</b>	<b>21</b>		
10.1 Preparing the laundry .....	21		
		10.2 Care symbols on the care labels .....	21
		<b>11 Basic operation .....</b>	<b>21</b>
		11.1 Switching on the appliance ..	21
		11.2 Setting a programme .....	22
		11.3 Opening the door .....	22
		11.4 Loading laundry .....	22
		11.5 Starting the programme .....	22
		11.6 Adding laundry .....	22
		11.7 Cancelling the programme ...	22
		11.8 Unloading the laundry .....	23
		11.9 Switching off the appliance ...	23
		11.10 Fluff filter .....	23
		11.11 Condensation container .....	24
		<b>12 Dryness level .....</b>	<b>25</b>
		12.1 Changing the dryness level ..	25
		12.2 Adjusting the dryness level ...	26
		<b>13 Childproof lock .....</b>	<b>26</b>
		13.1 Activating the childproof lock .....	26
		13.2 Deactivating the childproof lock .....	26
		<b>14 Basic settings .....</b>	<b>26</b>
		14.1 Overview of the basic settings .....	26
		14.2 Changing the basic settings .....	27
		<b>15 Appliance care .....</b>	<b>27</b>
		15.1 Preparing for appliance care .....	27
		15.2 Running the basic appliance care programme .....	27
		15.3 Running the intensive appliance care programme .....	28
		<b>16 Cleaning and servicing .....</b>	<b>29</b>
		16.1 Moisture sensor .....	29

16.2 Condensation container filter .....	29	<b>19 Customer Service .....</b>	<b>34</b>
<b>17 Troubleshooting .....</b>	<b>30</b>	19.1 Product number (E-Nr.) and production number (FD) .....	35
<b>18 Transportation, storage and disposal .....</b>	<b>34</b>	<b>20 Consumption values .....</b>	<b>35</b>
18.1 Disposing of old appliance ...	34	<b>21 Technical data .....</b>	<b>37</b>



## 1 Safety

Observe the following safety instructions.

### 1.1 General information



- Read this instruction manual carefully.
- Keep the instruction manual and the product information safe for future reference or for the next owner.
- Do not connect the appliance if it has been damaged in transit.

### 1.2 Intended use

Only use this appliance:

- for drying and freshening up fabrics that are washed with water and suitable for dryers.
- in private households and in enclosed spaces in a domestic environment.
- Up to an altitude of 4000 m above sea level.

### 1.3 Restriction on user group

This appliance may be used by children aged 8 or over and by people who have reduced physical, sensory or mental abilities or inadequate experience and/or knowledge, provided that they are supervised or have been instructed on how to use the appliance safely and have understood the resulting dangers.

Do not let children play with the appliance.

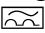
Cleaning and user maintenance must not be performed by children unless they are being supervised.

Keep children under the age of 3 years and pets away from the appliance.

## 1.4 Safe installation

### **WARNING – Risk of electric shock!**

Incorrect installation is dangerous.

- ▶ Connect and operate the appliance only in accordance with the specifications on the rating plate.
- ▶ Connect the appliance to a power supply with alternating current only via a properly installed socket with earthing.
- ▶ The protective conductor system of the domestic electrical installation must be properly installed. The installation must have a sufficiently large cross section.
- ▶ When using a residual current circuit breaker, only use a type with the  mark.
- ▶ Never equip the appliance with an external switching device, e.g. a timer or remote control.
- ▶ Never connect the appliance to a circuit that is regularly switched on and off by the energy supplier.
- ▶ When the appliance is installed, the mains plug of the power cord must be freely accessible. If free access is not possible, an isolating switch must be integrated into the permanent electrical installation according to the installation regulations.
- ▶ When installing the appliance, check that the power cable is not trapped or damaged.

If the insulation of the power cord is damaged, this is dangerous.

- ▶ Never let the power cord come into contact with hot appliance parts or heat sources.
- ▶ Never let the power cord come into contact with sharp points or edges.
- ▶ Never kink, crush or modify the power cord.

### **WARNING – Risk of fire!**

It is dangerous to use an extended power cord and non-approved adapters.

- ▶ Do not use extension cables or multiple socket strips.
- ▶ Only use adapters and power cords approved by the manufacturer.
- ▶ If the power cord is too short and a longer one is not available, please contact an electrician to have the domestic installation adapted.

**⚠ WARNING – Risk of injury!**

The heavy weight of the appliance may result in injury when lifted.

- ▶ Do not lift the appliance on your own.

If this appliance is not correctly installed in a washer-dryer stack, the installed appliance may fall.

- ▶ Only stack the dryer on a washing machine using the connection kit from the dryer manufacturer . No other installation method is permitted.

→ *"Accessories", Page 20*

- ▶ Do not install the appliance in a washer-dryer stack if the dryer manufacturer does not offer a suitable connection kit.
- ▶ Do not install appliances from different manufacturers and with varying depths and widths in a washer-dryer stack.
- ▶ Do not install a washer-dryer stack on a platform; the appliances may tip over.

**⚠ WARNING – Risk of suffocation!**

Children may put packaging material over their heads or wrap themselves up in it and suffocate.

- ▶ Keep packaging material away from children.
- ▶ Do not let children play with packaging material.

**⚠ CAUTION – Risk of injury!**

The appliance may vibrate or move when in use.

- ▶ Place the appliance on a clean, even, solid surface.
- ▶ Align the appliance using the appliance feet and a spirit level.

If hoses and power cords have been laid incorrectly, this causes a tripping hazard.

- ▶ Lay hoses and power cords in such a way that there is no risk of tripping.

If the appliance is moved by holding onto protruding components, such as the appliance door, the parts may break off.

- ▶ Do not move the appliance by holding onto protruding parts.

**⚠ CAUTION – Risk of cutting!**

Touching sharp edges on the appliance may lead to cuts.

- ▶ Do not touch the sharp edges on the appliance.
- ▶ Wear protective gloves when installing and transporting the appliance.

## 1.5 Safe use

### **WARNING – Risk of electric shock!**

If the appliance or the power cord is damaged, this is dangerous.

- ▶ Never operate a damaged appliance.
- ▶ Never pull on the power cord to unplug the appliance. Always unplug the appliance at the mains.
- ▶ If the appliance or the power cord is damaged, immediately unplug the power cord or switch off the fuse in the fuse box.
- ▶ Call customer service. → *Page 34*

An ingress of moisture can cause an electric shock.

- ▶ Only use the appliance in enclosed spaces.
- ▶ Never expose the appliance to intense heat or humidity.
- ▶ Do not use steam- or high-pressure cleaners, hoses or sprays to clean the appliance.

### **WARNING – Risk of harm to health!**

Children can lock themselves in the appliance, thereby putting their lives at risk.

- ▶ Do not install the appliance behind a door as this may obstruct the appliance door or prevent it from opening.
- ▶ With redundant appliances, unplug the power cord. Then cut through the cord and damage the lock on the appliance door beyond repair so that the appliance door will no longer close.

### **WARNING – Risk of suffocation!**

Children may breathe in or swallow small parts, causing them to suffocate.

- ▶ Keep small parts away from children.
- ▶ Do not let children play with small parts.

### **WARNING – Risk of explosion!**

If there is coal dust or flour in the air around the appliance, this may cause an explosion.

- ▶ Keep the area around the appliance clean during operation.

### **WARNING – Risk of poisoning!**

Condensation water from this appliance is not suitable for drinking and may be contaminated with fluff.

- ▶ Do not drink or reuse the condensation water from the appliance.

Detergents and care products may result in poisoning if consumed.

- ▶ If accidentally swallowed, seek medical advice.
- ▶ Keep detergents and care products out of the reach of children.

**⚠ WARNING – Risk of fire!**

The refrigerant R290 in this appliance is environmentally friendly yet combustible and may ignite if it comes into contact with open flames or ignition sources.

- ▶ Keep naked flames and ignition sources away from the appli-



ance.

**⚠ WARNING – Risk of explosion!**

If there is any residual material left in the fluff filter, this may ignite during the drying process.

- ▶ Clean the fluff filter regularly.

Highly flammable objects such as lighters or matches may ignite during the drying process.

- ▶ Remove all highly flammable objects from any pockets in your laundry before the drying process.

Unwashed laundry that has come into contact with solvents, oil, wax, wax remover, paint, grease or stain remover may ignite when drying is in progress.

- ▶ Do not place laundry in this appliance to be dried if the laundry has not been washed first.
- ▶ Rinse the laundry thoroughly with warm water and detergent before drying it in the machine.
- ▶ Do not use the appliance if industrial chemicals have been used to clean the laundry beforehand.

**⚠ WARNING – Risk of fire!**

If drying is interrupted early, the laundry is not cooled sufficiently and may ignite.

- ▶ Do not interrupt the drying programme early.
- ▶ If drying is interrupted early, remove the laundry immediately and spread it out.

**⚠ CAUTION – Risk of injury!**

The covering plate may break if you stand on or climb onto the appliance.

- ▶ Do not stand on or climb onto the appliance.

The appliance may tip over if you sit on or lean against the open door.

- ▶ Do not sit on or lean against the appliance door.
- ▶ Do not place any objects on the appliance door.

Reaching into the drum while it is still turning may cause hand injuries.

- ▶ Wait for the drum to come to a complete stop before reaching inside.

## **1.6 Safe cleaning and maintenance**

**⚠ WARNING – Risk of electric shock!**

Improper repairs are dangerous.

- ▶ Never make any technical modifications to the appliance or its features.
- ▶ Repairs to the appliance should only be carried out by trained specialist staff.
- ▶ Only use genuine spare parts when repairing the appliance.
- ▶ If the power cord of this appliance is damaged, it must be replaced by the manufacturer, the manufacturer's Customer Service or a similarly qualified person in order to prevent any risk.

An ingress of moisture can cause an electric shock.

- ▶ Before cleaning, pull out the mains plug or switch off the fuse in the fuse box.
- ▶ Do not use steam- or high-pressure cleaners, hoses or sprays to clean the appliance.

**⚠ WARNING – Risk of injury!**

The use of non-original spare parts and non-original accessories is dangerous.

- ▶ Only use the manufacturer's original spare parts and original accessories.



**⚠ WARNING – Risk of poisoning!**

Poisonous fumes may be given off if you use cleaning agents that contain solvents.

- ▶ Do not use cleaning agents that contain solvents.

---

## 2 Preventing material damage

**ATTENTION**

The functionality of the appliance may be impaired if you use the wrong quantity of fabric softener, detergent, care product or cleaning agent.

- ▶ Follow the dosage recommendations from the manufacturer.

Exceeding the maximum load capacity impairs the function of the appliance.

- ▶ Observe the maximum load capacity for each programme and do not exceed it.

→ "Programmes", Page 18

The function of the appliance may be impaired if the appliance overheats.

- ▶ Keep the ventilation opening on the appliance clear during operation.
- ▶ Make sure that the area is adequately ventilated.

Light objects such as hair and fluff may be sucked in from the ventilation opening on the appliance during operation and impair the function of the appliance.

- ▶ Keep the area around the appliance clean during operation.
- ▶ Keep light objects away from the appliance.

If you operate the appliance without a fluff guard (e.g. fluff filter, fluff collector, filter mat, etc., depending on appliance specifications), or if the fluff guard is incomplete or defective,

this may result in damage to the appliance.

- ▶ Do not operate the appliance without a fluff guard, or with a fluff guard that is incomplete or defective.

Foam and foam rubber may deform or melt during the drying process.

- ▶ Do not dry laundry that contains foam or foam rubber.

Unsuitable cleaning products may damage the surfaces of the appliance.

- ▶ Do not use harsh or abrasive detergents.
- ▶ Do not use cleaning products with a high alcohol content.
- ▶ Do not use hard scouring pads or cleaning sponges.
- ▶ Clean the appliance with nothing but water and a soft, damp cloth.
- ▶ Remove all detergent residue, spray residue or other residues immediately if they come into contact with the appliance.

---

## 3 Environmental protection and saving energy

### 3.1 Disposing of packaging

The packaging materials are environmentally compatible and can be recycled.

- ▶ Sort the individual components by type and dispose of them separately.

## 3.2 Saving energy

If you follow these instructions, your appliance will use less power.

- Operate the appliance in a well-ventilated room and keep the ventilation opening on the appliance clear.
- Spin the laundry in the washing machine before drying.
- For each drying process, use the maximum load for the programs. Programmes → *Page 18*
- Do not exceed the programme's maximum load capacity. Programmes → *Page 18*
- After drying, clean the fluff filter. → *"Cleaning the fluff filter", Page 23*

## 3.3 Energy saving mode

If you do not use the appliance for a brief period, it automatically switches to energy-saving mode.

Energy-saving mode ends when you use the appliance again.

---

# 4 Installation and connection

## 4.1 Unpacking the appliance

### ATTENTION

Objects remaining in the drum that are not designed for operation with the appliance may cause material damage and damage to the appliance.

- ▶ Remove these objects, along with all supplied accessories, from the drum before starting the appliance.

1. Remove any packaging and protective covers completely from the appliance.  
→ *"Disposing of packaging", Page 9*
2. Check the appliance for visible damage.
3. Open the door. → *Page 22*
4. Remove any accessories from the drum.
5. Close the door.

## 4.2 Contents of package

After unpacking all parts, check for any damage in transit and completeness of the delivery.

### ATTENTION

If the appliance is operated with incomplete or defective accessories, the appliance may not be able to operate properly, or this may result in material damage or damage to the appliance.

- ▶ Do not operate the appliance with incomplete or defective accessories.
- ▶ Replace the accessories in question before operating the appliance.  
→ *"Accessories", Page 20*

The delivery consists of the following:

- Tumble dryer
- Accompanying documents
- Water outlet hose with connection adapter, fixing material and elbow  
→ *Page 11*

## 4.3 Requirements for the installation location

Observe the instructions for the installation location.

### ATTENTION

If the appliance is tilted at an angle greater than 40°, residual water may

leak out of the appliance and cause material damage.

- ▶ Tilt the appliance carefully.
- ▶ Transport the appliance in an up-right position.

If residual water in the appliance freezes, this may cause damage to the appliance.

- ▶ Do not install or operate this appliance anywhere that is liable to experience frost or outdoors.

If the appliance is operated immediately after transportation, the refrigerant contained in the appliance may result in damage to the appliance.

- ▶ Immediately after transporting the appliance, leave it to rest for two hours before putting it into operation.

### On the floor

Place the appliance on a clean, level and firm surface.

Align the appliance. → *Page 13*

### In a washer-dryer stack

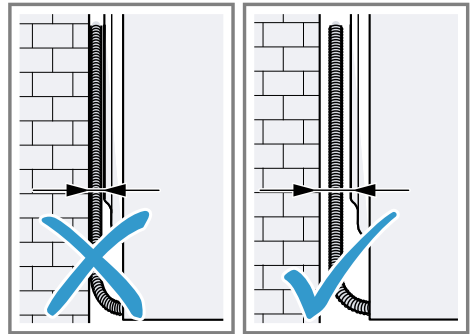
Only use the original connection set from the dryer manufacturer when setting up this appliance in a washer-dryer stack.

- Connection kit → *Page 20*
- Connection kit with pull-out work-top → *Page 20*

This appliance must only be stacked on a washing machine from the same manufacturer. The depth and width of this appliance must correspond with the dimensions of the washing machine.

Do not place the washer-dryer stack on a platform.

### Against a wall



Do not trap the hoses and power cord between the wall and the appliance.

## 4.4 Water outlet hose

Condensation that forms in the appliance as it dries the laundry is collected by default in the condensation container. Use the water outlet hose to drain away excess condensation directly into the waste water system.

**Note:** Operate this appliance using the water outlet hose provided.

→ *Page 11*

If you connect the water outlet hose, you do not have to regularly empty the condensation container.

→ *"Emptying the condensation container", Page 24*

### Connecting the water outlet hose

If you do not want to regularly empty the appliance's condensation container, connect the water outlet hose.

### ATTENTION

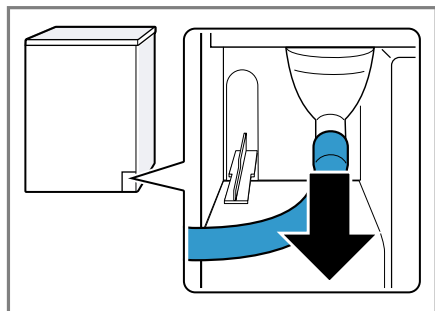
When operating the appliance without the condensation hose or water outlet hose being connected properly, liquid may leak out of the connecting piece.

- ▶ Before operating the appliance, connect the condensation hose or

water outlet hose properly to the connecting piece.

## Requirements

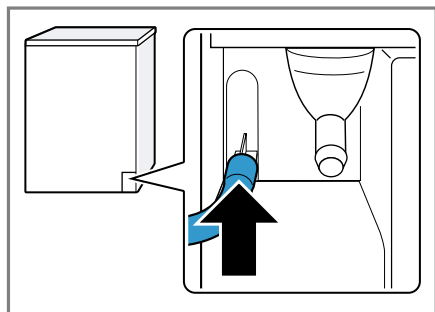
- The appliance and the accessory have been unpacked. → *Page 10*
  - The appliance is installed at the installation location.
1. Pull out the condensation hose from the connecting piece.



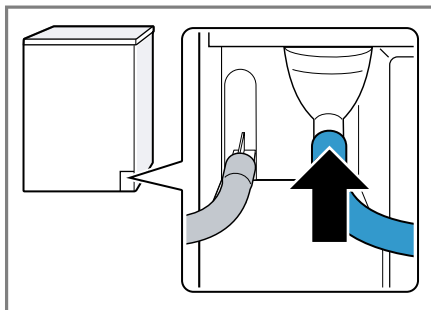
The condensation hose is connected to the connecting piece at the factory.

**Note:** When removing the condensation hose, liquid may leak out of the connecting piece.

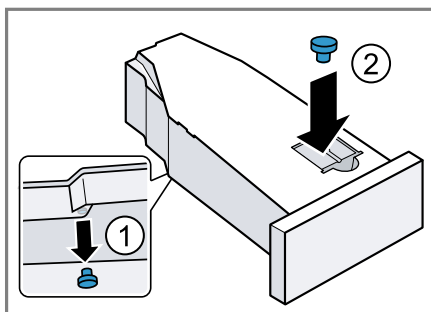
2. Push the condensation hose into the holder.



3. Push the water outlet hose as far as it will go into the connecting piece.



4. Empty the condensation container.  
→ *Page 24*
5. Remove the stopper from the underside ① and insert it in the recess in the top ②.



6. Insert the condensation container.  
→ *Page 25*
7. Connect the appliance to the water drain. → *Page 12*

**Tip:** To collect condensation in the condensation container again (e.g. if you change where the appliance is located), carry out these steps in reverse order.

## Water outlet connection types

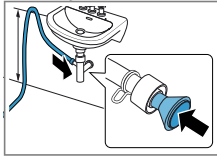
### ATTENTION

In the event of a blocked or covered outlet, accumulated wastewater can flow back into the appliance.

- Before operating the appliance, ensure that the wastewater drains

away quickly and eliminate any blockages.

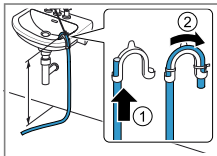
Drainage into a siphon.



Secure the connection point with a (12-22 mm) hose clamp. Secure the water outlet hose with a hose guide at a height of at least 80 cm and no more than 100 cm.

**Note:** You can use the Y-distributor → *Page 20* to connect the water outlet hose of an additional appliance, such as a washing machine, to the same siphon outlet.

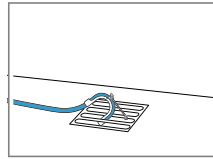
Drainage into a wash basin.



Push the water outlet hose fully through the elbow and secure it using fixing material. Secure the elbow at a height of no more than 100 cm.

Drainage into a gully.

Push the water outlet hose fully through the elbow and secure it using fixing material.

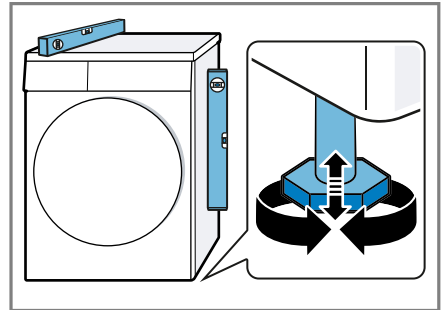


Secure the elbow to the gully.

## 4.5 Aligning the appliance

In order to reduce vibrations and noises, align the appliance correctly.

- To align the appliance, turn the appliance feet. Check that the appliance is level using a spirit level.



All appliance feet must stand firmly on the ground.

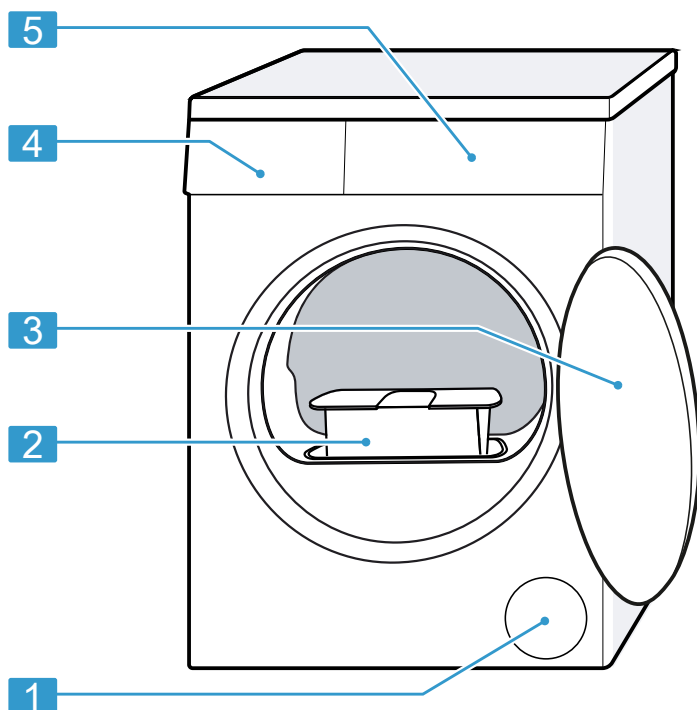
## 4.6 Connecting the appliance to the electricity supply

1. Insert the mains plug of the appliance's power cable in a socket nearby.  
The connection details of the appliance can be found under Technical data → *Page 37*.
  2. Check the mains plug is inserted properly.
- ✓ The appliance is now ready for use.

## 5 Familiarising yourself with your appliance

### 5.1 Appliance

You can find an overview of the parts of your appliance here.



On certain models, specific details such as the colour and shape may differ from those pictured.

---

**1** Ventilation opening

---

**2** Fluff filter → *Page 23*

---

**3** Door → *Page 22*

---

---

**4** Condensation container  
→ *Page 24*

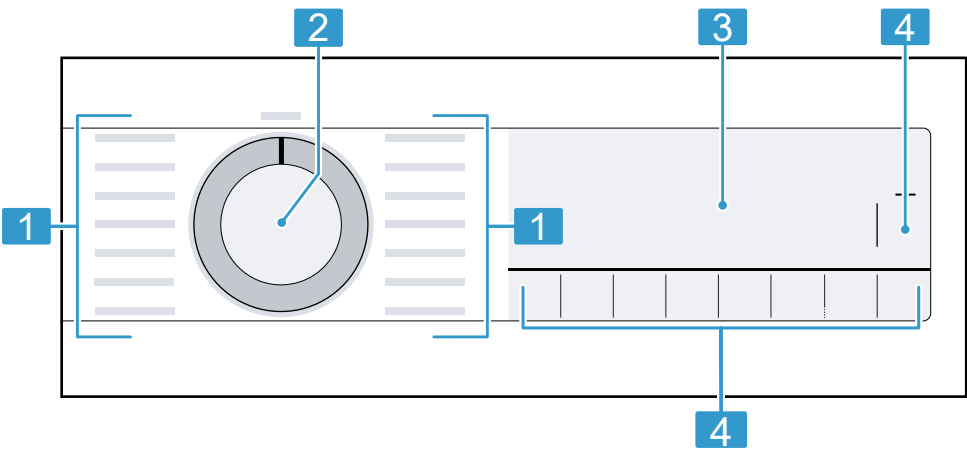
---

**5** Control panel → *Page 15*

---

5.2 Control panel

You can use the control panel to configure all functions of your appliance and to obtain information about the operating status.

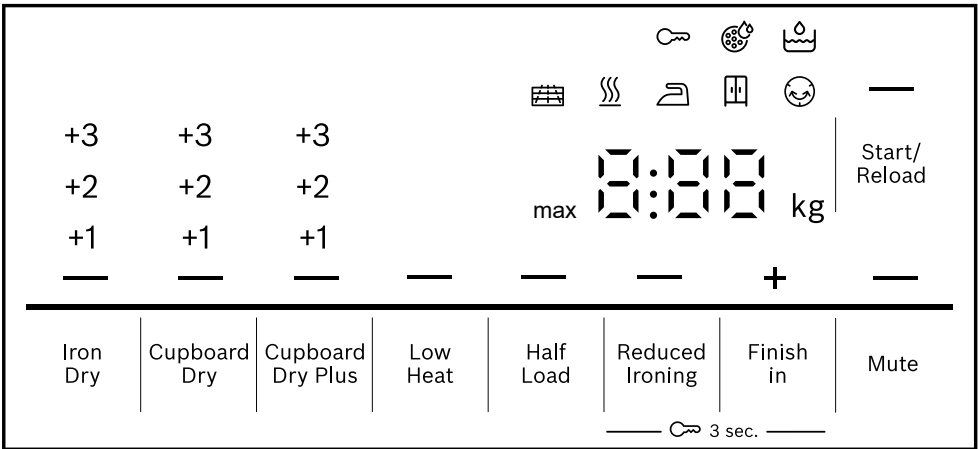


- 1 Programmes → *Page 18*
- 2 Programme selector → *Page 21*





- 3 Display → *Page 15*
- 4 Buttons → *Page 17*

6 Display

The display shows the current settings, options or relevant information. Depending on the programme status, the display shows some information in the 8:88 area, e.g. End.

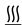





Example: Display


Indicator	Description
0:40 <sup>1</sup>	Expected programme duration or programme time remaining in hours and minutes.
1:25	The timed programme is set. → <i>Page 19</i>
9.0 <sup>1</sup>	Recommendation for the maximum load capacity for the selected program in kg.
+ 0:45 <sup>1</sup>	Programme end time → <i>Page 17</i>
	<ul style="list-style-type: none"> <li>■ Lights up: The childproof lock is activated.</li> <li>■ Flashes: The childproof lock is activated and the appliance has been operated. → <i>Page 26</i></li> </ul>
— (Start/Reload)	<p>Start, cancel or pause</p> <ul style="list-style-type: none"> <li>■ Lights up: The programme is running and can be cancelled or paused.</li> <li>■ Flashes: The programme can be started or continued.</li> </ul>
— (Iron Dry)	The dryness level is activated. → <i>Page 25</i>
— (Cupboard Dry)	The dryness level is activated. → <i>Page 25</i>
— (Cupboard Dry Plus)	The dryness level is activated. → <i>Page 25</i>
+1 +2 +3	The adjusted dryness level is activated. → <i>Page 25</i>
— (Reduced Ironing)	The crease-reduction function is activated. → <i>"Buttons", Page 17</i>
— (Low Heat)	Gentle drying is activated for delicate fabrics. → <i>Page 17</i>
4.5 kg — (Half Load)	Half load is activated. → <i>Page 18</i>
— (Mute)	Quiet drying with no signal tones is activated. → <i>Page 18</i>
	Empty and insert the condensation container. → <i>Page 24</i>
	Clean the fluff filter → <i>Page 23</i> .
CrE	Run the basic appliance care programme. → <i>Page 27</i>
Hot	<p>The cooling process cools the laundry independently of the programme status for a few minutes while the drum is rotating, in order to avoid damage to the laundry. The cooling process can be cancelled by opening the door.</p> <p><b>Note:</b> Do not change the set programme.</p>
	The automatic self-cleaning function rinses the appliance's heat exchanger.

<sup>1</sup> Example



Indicator	Description
	<b>Note:</b> Do not remove the condensation container and do not interrupt the programme.
	Programme status: Drying
	Programme status: Iron dry dryness level
	Programme status: Cupboard Dry dryness level
	Programme status: Crease-reduction function
— (Start/Reload)	Programme status: Pause
End	Programme status: Programme end

## 7 Buttons

Button	Description
Start/Reload	Start, cancel or pause the programme.
 3 sec.	Activate or deactivate the childproof lock. → <i>Page 26</i>
Cupboard Dry Plus	Selecting Cupboard Dry Plus activates the dryness level. → <i>Page 25</i> The dryness level can be adjusted by selecting +1+1 , +2+2 or +3+3 . → <i>Page 26</i>
Cupboard Dry	Selecting Cupboard Dry activates the dryness level. → <i>Page 25</i> The dryness level can be adjusted by selecting +1+1 , +2+2 or +3+3 . → <i>Page 26</i>
Iron Dry	Selecting Iron Dry activates the dryness level. → <i>Page 25</i> The dryness level can be adjusted by selecting +1+1 , +2+2 or +3+3 . → <i>Page 26</i>
Reduced Ironing	Activate or deactivate the crease-reduction function. Once the programme has ended, the drum moves the laundry at regular intervals for 120 minutes to prevent creasing.
Low Heat	Activate or deactivate gentle drying. The temperature is reduced for delicate fabrics, e.g. poly-acrylic or elastane. The programme duration is extended.
Finish in	Set the programme end time. The programme duration is already included in the set number of hours. Once the programme has started, the programme duration is displayed.

Button	Description
	Set the programme duration for timed programmes. → <i>Page 19</i>
Mute	Activate or deactivate operating signals and information signals.
Half Load	Dry individual items of laundry or small loads of laundry.

## 8 Programmes

You can dry your fabrics using either an automatic programme or a timed programme.

**Note:** The laundry's care labels provide you with additional information about programme selection.  
→ *"Care symbols on the care labels", Page 21*

### 8.1 Automatic programmes

Automatic programmes are programmes in which humidity sensors measure the residual moisture in the laundry during the drying cycle. The programme only ends once the set dryness level is reached. Each automatic programme has a dryness level → *Page 25*. The dryness level defines how dry or damp the laundry is after the programme ends.

**Tip:** Select the dryness level according to the type of fabric or the desired drying result.

Programme	Description	Max. load (kg)
Cottons	Dry hard-wearing, heat-resistant fabrics made of cotton or linen.	9.0
Eco	Dry hard-wearing, heat-resistant fabrics made of cotton or linen. Energy-saving programme.	9.0
Easy Care	Dry items made of synthetic materials or blended fabrics.	3.5
Mixed Load	Dry items made of cotton and synthetics.	3.0
Bed linen	Dry duvet covers, pillowcases and sheets made of cotton.  <b>Note:</b> The drum movement is optimised for drying large items of laundry.	3.5
Delicates	Dry delicate items made of satin, synthetics or blended fabrics.	2.0
Down Wear	Dry clothing, bedspreads or eiderdowns stuffed with down.	1.5

Programme	Description	Max. load (kg)
	<b>Notes</b> <ul style="list-style-type: none"> <li>■ Dry large items of laundry, such as blankets or sleeping bags, separately.</li> <li>■ Once the programme has ended, shake the items of laundry to distribute the stuffing and eliminate any pockets of moisture.</li> <li>■ If you dry the pillows and the pillows are not completely dry at the end of the programme, dry the pillows with a timed programme. → <i>Page 19</i></li> </ul>	
Hygiene Plus	Dry hard-wearing, heat-resistant fabrics made of cotton or linen. Suitable for increased hygiene requirements.	4.0
Sportswear	Dry self-drying sportswear made of performance fibres, microfibres and synthetics.	1.5
Shirts	Suitable for shirts and blouses made of cotton, linen, synthetics or blended fabrics.  <b>Note:</b> For optimal drying results, dry a maximum of 5 shirts or 5 blouses at the same time. Once the laundry is dry, iron it or hang it up. The residual moisture is then distributed evenly.	1.5
Super Quick 40'	Dry items made of synthetics and light cotton.	2.0
Towels	Dry hard-wearing, heat-resistant towels and dressing gowns made of cotton or linen.	6.0

## 8.2 Timed programmes

Timed programmes are programmes with a defined or adjustable programme duration. The programme ends once this time has elapsed, even if the laundry is still not dry, for example. Timed programmes are suitable for drying individual items of laundry or thin fabrics.

Programme	Description	Max. load (kg)
Wool Finish	Dry machine-washable items made of wool or containing wool. <b>Note:</b> The laundry becomes fluffier but not dry. Remove laundry once the programme has ended and allow it to dry.	0.5
Timed Program Warm	Dry all types of fabric except for wool and silk. Suitable for pre-dried or slightly damp laundry and for drying off multi-layered, thick laundry.	3.0

## 9 Accessories

Use original accessories. These have been made especially for your appliance.

**Tip:** Some accessories are available in other colours. Contact customer service. → *Page 34*

	Use	Order number
Connection kit	To save space, stack the appliance on a suitable washing machine of the same width and depth and that is from the same manufacturer.	WTZ27410
Connection kit with pull-out worktop	To save space, stack the appliance on a suitable washing machine of the same width and depth and that is from the same manufacturer. The pull-out worktop makes it easier to load and unload the appliance.	WTZ27400
Wool basket	Dry or air individual wool-len items, sports shoes and soft toys.	WMZ20600
Y-distributor	Connect the water outlet hose of an additional ap-	15000490

	<b>Use</b>	<b>Order number</b>
	pliance to the same si- phon outlet.	
Water outlet hose	Drain away excess con- densation directly into the waste water system, without having to regu- larly empty the condens- ation container.	WTZ1110
Appliance care product	Spare part for the intens- ive appliance care func- tion.	00312474
Platform	Install the appliance at a raised height so that it can be easily loaded and unloaded.	WTZPW20D

## 10 Laundry

### 10.1 Preparing the laundry

#### ATTENTION

Objects remaining in the laundry may damage the laundry and the drum.

- ▶ Remove all items from any pockets in your laundry before using the appliance.




#### Note

The appliance and fabrics are protected when you prepare your laundry.

- Brush off sand and soil
  - Sort the laundry according to colour and textiles and observe the care labels
  - Close all zips, hook and loop fasteners, hooks and eyes
  - Remove curtain fittings and lead strips
  - Load the laundry unfolded into the drum
  - Spin the laundry before drying
  - Dry woollen items, sports shoes and soft toys in the wool basket
- Wool basket

### 10.2 Care symbols on the care labels

#### Drying care symbols

<b>Symbol</b>	<b>Fabrics</b>
	Items made from cotton and linen, e.g. towels, bed linen, underwear
	Items made from synthetic, blended or delicate fabrics, e.g. functional garments, shirts
	Do not tumble dry items made from silk, nylon, air-impermeable and rubber-coated fabrics, synthetic curtains

## 11 Basic operation

### 11.1 Switching on the appliance

**Requirement:** The appliance has been correctly installed and connected. → *Page 10*

- ▶ Turn the programme selector to a programme.

**Note:** The lighting for the drum goes out automatically.

## 11.2 Setting a programme

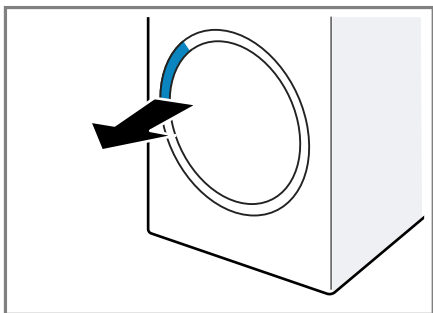
1. Turn the programme selector and set the required programme.  
→ *Page 18*

2. If required, adjust the programme settings. → *Page 17*

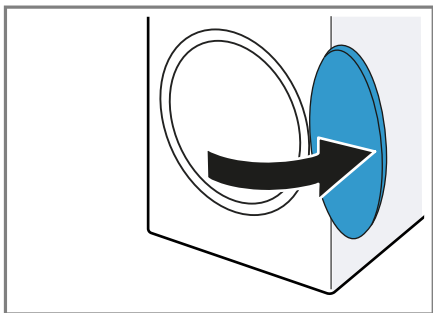
The programme settings are not saved permanently for the programme.

## 11.3 Opening the door

1. Grip under the door handle and pull on the door.



2. Open the door.



## 11.4 Loading laundry

**Note:** To prevent creasing, note the maximum load for the programmes.  
→ *Page 18*

## Requirements

- The laundry is prepared and sorted. → *Page 21*
  - The drum is empty.
1. Open the door. → *Page 22*
  2. Place the laundry in the drum.
  3. Close the door.  
Ensure that there is no laundry trapped in the door.

## 11.5 Starting the programme

### Requirements

- A programme is set. → *Page 22*
  - The door is closed.
- ▶ Press **Start/Reload**.
  - ✓ The display shows the programme duration or the programme end time.
  - ✓ After the programme has ended, the display shows: "End".

**Note:** When "Hot" is shown on the display, the appliance cools the laundry.

When "Hot" goes out, the laundry has cooled down.

## 11.6 Adding laundry

After the programme starts, you can remove or add laundry at any time.

1. Press **Start/Reload**.

The cooling process starts automatically after approximately 30 seconds and cools down the laundry while the drum is rotating. If you want to avoid or cancel the cooling process, open the door.  
→ *Page 16*

2. Open the door. → *Page 22*
3. Add or remove laundry.
4. Close the door.
5. Start the programme. → *Page 22*

## 11.7 Cancelling the programme

1. Press **Start/Reload**.

2. Open the door. → *Page 22*
3. Remove the laundry. → *Page 23*

## 11.8 Unloading the laundry

1. Open the door. → *Page 22*
2. Remove the laundry from the drum.

## 11.9 Switching off the appliance

- Turn the programme selector to **Off**.

## 11.10 Fluff filter


During drying, fluff from the laundry is collected in the fluff filter. The fluff filter protects the appliance from fluff.

### Cleaning the fluff filter

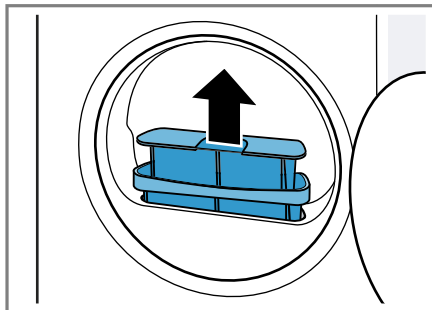
If the drying programme has finished or the display shows a notification while the appliance is in operation, clean the fluff filter after the programme end.

**Note:** If you do not clean the appliance as described, the appliance's functionality may be impaired.

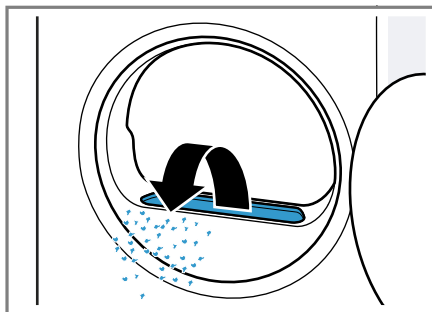
### Requirements

- The display shows the following after drying: "End"
  - or the display shows the following during operation: .
1. Open the door. → *Page 22*
  2. Remove the fluff from the inside of the door.

3. Remove the two-part fluff filter one part at a time.

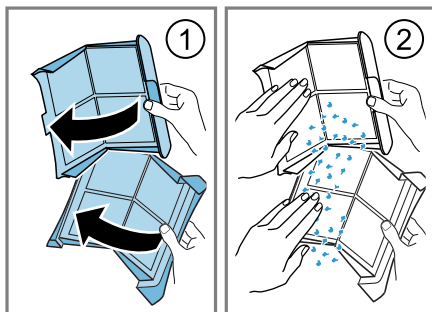


4. Remove the fluff from the recess.



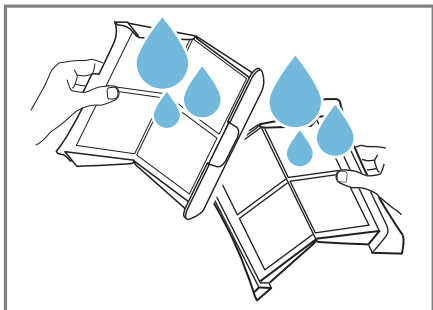
Ensure that no fluff falls into the air channel.

5. Open the two fluff filters ① and remove the fluff ②.



Dispose of the fluff with the household waste in order to prevent the water from being contaminated with microplastics.

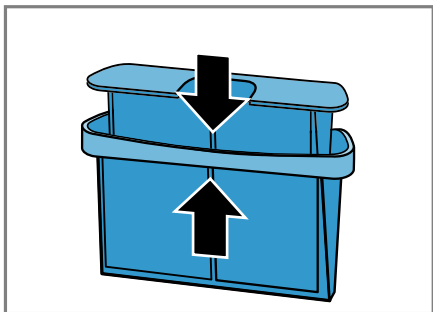
6. Clean the two fluff filters thoroughly under warm, running water and then dry them off.



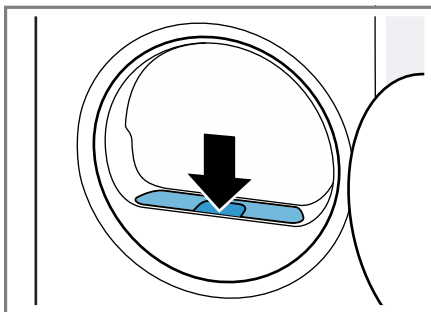
**Note:** Collect the cleaning water in a container, e.g. a bucket. After cleaning, pour the contents of the container through a filter, e.g. a coffee filter.

Dispose of the coffee filter with the household waste in order to prevent the water from being contaminated with microplastics.

7. Close the two fluff filters and put them together.



8. Insert the two-part fluff filter.



9. Close the door.

### 11.11 Condensation container

Condensation that forms in the appliance as it dries the laundry is collected by default in the condensation container.

**Note:** Operate this appliance using the water outlet hose provided.

→ *Page 11*

If you connect the water outlet hose, you do not have to regularly empty the condensation container.

→ *"Emptying the condensation container", Page 24*

#### Emptying the condensation container

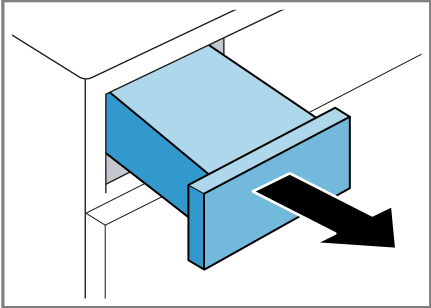
If the drying programme has finished or the display shows a notification that the drying programme is paused, empty the condensation container.

#### Requirements

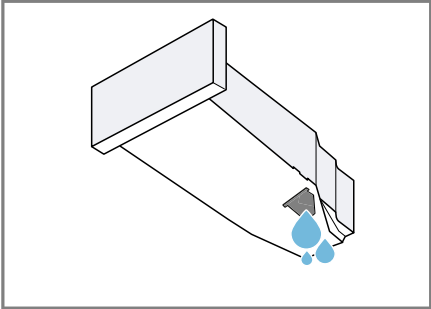
- The display shows the following after drying: "End"
- or the display shows the following while operation is paused: ☹.



1. Pull out the condensation container, keeping it level.



2. Empty the condensation container.



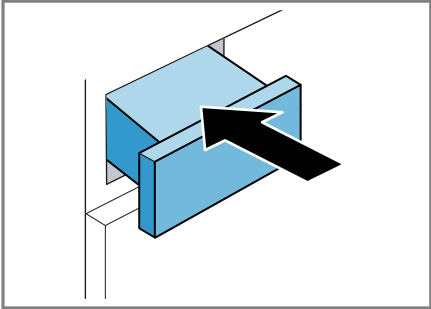
Check the condensation container filter *regularly* and clean the filter if it is dirty. → *Page 29*

Make sure that you insert the condensation container before operating the appliance. → *Page 25*

3. If the drying programme is paused, start the programme. → *Page 22*

**Inserting the condensation container**

- Push the condensation container in as far as it will go.



**12 Dryness level**

Each automatic programme has a specified dryness level. The dryness level defines how dry or damp your laundry is after the programme ends.

Dryness level	Description
Cupboard Dry Plus	For multi-layered, thick laundry that does not dry readily.
Cupboard Dry	For normal, single-layered laundry.
Iron Dry	For normal, single-layered laundry. The laundry is still slightly damp after the programme ends. To prevent creasing after drying, iron the laundry or hang it up.

**12.1 Changing the dryness level**

For some automatic programmes, you can change the dryness level so that your laundry will be drier or more damp.

## en Childproof lock

1. Set an automatic programme.  
→ *Page 18*
- ✓ The display shows the specified dryness level.
2. Press **Cupboard Dry**, **Cupboard Dry Plus** or **Iron Dry**.
- ✓ The display shows — (Cupboard Dry), — (Cupboard Dry Plus) or — (Iron Dry).

## 12.2 Adjusting the dryness level

If the laundry feels too damp after it has been dried to a particular dryness level, you can adjust the dryness level.

1. Set an automatic programme.  
→ *Page 18*
- ✓ The display shows the specified dryness level.
2. Repeatedly press **Cupboard Dry**, **Cupboard Dry Plus** or **Iron Dry** to adjust the dryness level from "+1" (dry) to "+3" (driest).

## 13 Childproof lock

Secure your appliance against being operated unintentionally using the controls.

### 13.1 Activating the childproof lock

- ▶ Press on both ∞ **3 sec.** buttons for approx. 3 seconds.
- ✓ The display shows ∞.
- ✓ The control elements are locked.
- ✓ The childproof lock remains active even after the appliance has been switched off and in the event of a power cut.

### 13.2 Deactivating the childproof lock

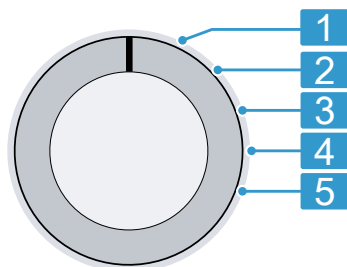
**Requirement:** To deactivate the childproof lock, the appliance must be switched on.

- ▶ Press on both ∞ **3 sec.** buttons for approx. three seconds.  
So that the programme currently running is not cancelled, the programme selector must be set to the initial programme.
- ✓ ∞ goes out on the display.

## 14 Basic settings

You can configure the basic settings for your appliance to meet your needs.

### 14.1 Overview of the basic settings



Programme selector with programme positions

- 1 No basic setting.
- 2 Set the volume of the signal at the end of the programme:  
0 (off) to 4 (very loud)

**3** Set the volume of the signal tone emitted when the buttons are pressed:  
0 (off) to 4 (very loud)

**5** Display the number of started programmes.

## 14.2 Changing the basic settings

1. Set the programme selector to position 1. → *Page 26*
2. Press **Iron Dry** and, at the same time, turn the programme selector to position 2.
- ✓ The display shows the current value.
3. Use the programme selector to select the required basic setting.  
→ *Page 26*
4. To change the value, press **Finish in**.
5. To save the changes, switch off the appliance.

## 15 Appliance care

The appliance offers cleaning programmes for basic and intensive appliance care.

To remove light dirt deposits in the appliance, you can run the basic appliance care programme when the display shows "CrE" after a longer period of use.

**Note:** The basic appliance care programme runs for approximately 1 hour.

To remove any stubborn dirt deposits in the appliance and odours after a downtime of more than one month, you can run the intensive appliance care programme.

### Notes

- The intensive appliance care programme runs for approximately 4 hours and must not be cancelled.
- When you run the intensive appliance care programme, you need the original appliance care product  
→ *Page 21*.

## 15.1 Preparing for appliance care

### Preparing the appliance

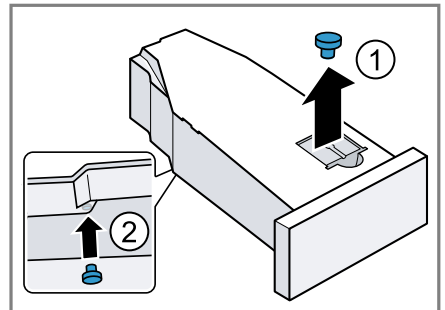
**Requirement:** The drum is empty.

1. Switch off the appliance.  
→ *Page 23*
2. Clean the fluff filter → *Page 23*.
3. Empty the condensation container.  
→ *Page 24*

### Preparing the condensation container

If you drain the condensation using the water outlet hose, prepare the condensation container.

1. Remove the stopper from the recess in the top ① and insert it in the underside ②.



2. Clean the filter in the condensation container.

## 15.2 Running the basic appliance care programme

**Requirement:** The appliance care is prepared. → *Page 27*

1. Pour approx. 1.5 litres of hot mains water into the condensation container.  
Hold the filled condensation container level so that no liquid spills out.
2. Insert the condensation container so that it locks into place.
3. Set the programme selector to position 1. → *Page 26*
4. Press and hold the **Iron Dry** button and turn the programme selector to position 4 → *Page 26*.
5. Release **Iron Dry** .
  - ✓ "CP1" and the programme duration alternate on the display.
6. Press **Start/Reload** .
  - ✓ The appliance care programme starts and a signal tone sounds.
  - ✓ "End" appears on the display and a signal tone sounds once the appliance care programme has ended.
7. Empty the condensation container. → *Page 24*
8. If you drain the condensation using the water outlet hose, remove the stopper from the underside of the condensation container and insert it into the recess in the top of the condensation container. → *Page 27*
9. Insert the condensation container so that it locks into place.
10. Switch off the appliance. → *Page 23*

## 15.3 Running the intensive appliance care programme

### Starting the intensive appliance care programme

**Requirement:** The appliance care is prepared. → *Page 27*

1. Pour a bottle of the appliance care product and approx. 1.5 litres of

hot mains water into the condensation container.

Hold the filled condensation container level so that no liquid spills out.

2. Insert the condensation container so that it locks into place.
3. Set the programme selector to position 1. → *Page 26*
4. Press and hold the **Iron Dry** button and turn the programme selector to position 4 → *Page 26*.
5. Release **Iron Dry** .
  - ✓ "CP1" and the programme duration alternate on the display.
6. Press **+**.
  - ✓ "CP2" and the programme duration alternate on the display.
7. Press **Start/Reload** .
  - ✓ The appliance care programme starts and a signal tone sounds.
  - ✓ After around 3 hours, the appliance pauses the appliance care programme and the remaining programme duration flashes on the display.
8. Empty the condensation container. → *Page 24*
9. Pour approx. 1.5 litres of hot mains water into the condensation container.
10. Carefully swivel the condensation container horizontally and empty it to rinse out any remaining appliance care product.

### Continuing the intensive appliance care programme

1. Pour approx. 1.5 litres of hot mains water into the condensation container.  
Hold the filled condensation container level so that no liquid spills out.
2. Insert the condensation container so that it locks into place.

3. Press **Start/Reload** .
  - ✓ The appliance care programme continues.
  - ✓ "End" appears on the display and a signal tone sounds once the appliance care programme has ended.
4. Empty the condensation container. → *Page 24*
5. If you drain the condensation using the water outlet hose, remove the stopper from the underside of the condensation container and insert it into the recess in the top of the condensation container. → *Page 27*
6. Switch off the appliance. → *Page 23*

## 16 Cleaning and servicing

### 16.1 Moisture sensor

The moisture sensor in this appliance measures how damp the laundry is during the drying cycle. The appliance changes the duration of the automatic programme depending on the residual moisture in the laundry.

#### Cleaning the moisture sensor

Over time, residue from limescale, detergents and care products can build up on the moisture sensor. Clean the moisture sensor regularly.

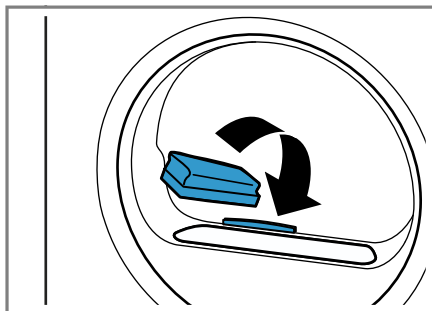
#### ATTENTION

Hard or rough objects may damage the moisture sensor.

- ▶ Do not use hard or rough objects, abrasive cleaning products or steel wool for cleaning.

**Note:** If you do not clean the appliance as described, the appliance's functionality may be impaired.

1. Open the door.
2. Clean the moisture sensor with a sponge.



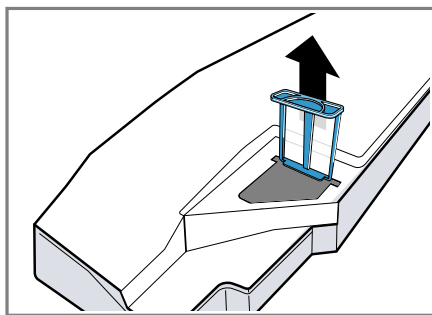
### 16.2 Condensation container filter

During drying, fluff from the laundry gets into the condensation. The filter in the condensation container protects the appliance from fluff.

#### Clean the filter for the condensation tank.

The filter is cleaned automatically when the condensation container is emptied. Check the filter regularly and clean the filter if it is dirty.

1. Empty the condensation container. → *Page 24*
2. Remove the filter.



3. Clean the filter under warm, running water.

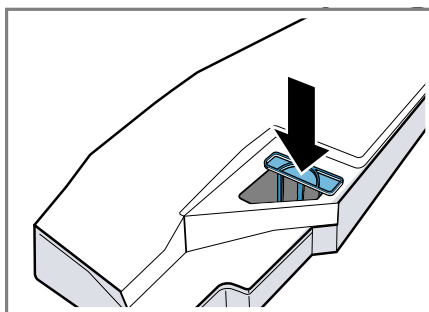
**Note:** Collect the cleaning water in a container, e.g. a bucket. After cleaning, pour the contents of the

container through a filter, e.g. a coffee filter.

Dispose of the coffee filter with the household waste in order to prevent the water from being contaminated with microplastics.

You can also clean the filter in the dishwasher.

4. Slide in the filter as far as it will go.



5. Insert the condensation container.  
→ Page 25

---

## 17 Troubleshooting

You can rectify minor faults on your appliance yourself. Read the troubleshooting information before contacting after-sales service. This will avoid unnecessary costs.

### **WARNING**

#### **Risk of electric shock!**



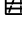
Improper repairs are dangerous.

- ▶ Never make any technical modifications to the appliance or its features.
- ▶ Repairs to the appliance should only be carried out by trained specialist staff.
- ▶ Only use genuine spare parts when repairing the appliance.
- ▶ If the power cord of this appliance is damaged, it must be replaced by the manufacturer, the manufacturer's Customer Service or a similarly qualified person in order to prevent any risk.

---

<b>Fault</b>	<b>Cause and troubleshooting</b>
The display goes out and <b>Start/Reload</b> flashes.	Energy-saving mode is active ▶ Press <b>Start/Reload</b> .

---

Fault	Cause and troubleshooting
All other error codes.	<p>Malfunction</p> <ol style="list-style-type: none"> <li>1. Restart the appliance.</li> <li>2. If the fault occurs again, disconnect the appliance from the power supply for at least 30 seconds. Unplug the appliance from the mains or switch off the circuit breaker in the fuse box.</li> <li>3. If the fault persists, call customer service. → <i>Page 34</i> Please specify the exact error message when calling. If possible, document the fault with photos and videos.</li> </ol>
"Hot" and the drum rotates.	<p>Not a fault. The cooling process is active. No action required.</p> <p><b>Note:</b> Do not change the programme during the cooling process. The cooling process takes up to 10 minutes.</p>
 and programme terminated.	<p>The condensation container is full.</p> <ul style="list-style-type: none"> <li>▶ Empty the condensation container. → <i>Page 24</i></li> </ul> <p>The water outlet hose is not connected correctly, or is kinked or trapped.</p> <ul style="list-style-type: none"> <li>▶ Check the installation of the water outlet hose. → <i>Page 11</i></li> </ul> <p>Water outlet hose is blocked.</p> <ul style="list-style-type: none"> <li>▶ Rinse the water outlet hose with tap water.</li> </ul> <p>The filter for the condensation tank is soiled.</p> <ul style="list-style-type: none"> <li>▶ Clean the filter for the condensation container. → <i>Page 29</i></li> </ul>
"CrE"	<p>The basic appliance care programme should be run.</p> <ul style="list-style-type: none"> <li>▶ Run the basic appliance care programme → <i>Page 27</i>.</li> </ul>
	<p>Fluff filter is soiled.</p> <ul style="list-style-type: none"> <li>▶ Clean the fluff filter. → <i>Page 23</i></li> </ul>
	<p>Not a fault. The automatic self-cleaning function rinses the appliance's heat exchanger. No action required.</p> <p><b>Note:</b> Do not pull out the condensation container and do not interrupt the programme.</p>
The programme does not start.	<p>Childproof lock is activated.</p> <ul style="list-style-type: none"> <li>▶ Deactivate the childproof lock. → <i>Page 26</i></li> </ul> <p><b>Finish in</b> is activated.</p> <ul style="list-style-type: none"> <li>▶ Check whether <b>Finish in</b> is activated. → <i>Page 17</i></li> </ul>

Fault	Cause and troubleshooting
The length of the programme changes during the drying cycle.	Not a fault. The programme sequence is optimised electronically. No action required.
The drying time is too long.	<p>Fluff filter is soiled.</p> <ul style="list-style-type: none"> <li>► Clean the fluff filter. → <i>Page 23</i></li> </ul> <p>The ambient temperature is lower than 15 °C or higher than 30 °C.</p> <ul style="list-style-type: none"> <li>► Ensure that the ambient temperature is between 15 °C and 30 °C.</li> </ul> <p>The air circulation at the appliance's installation location is insufficient.</p> <ul style="list-style-type: none"> <li>► Ventilate the appliance's installation location.</li> </ul> <p>Insufficient condensation for the automatic self-cleaning when permanently drying small loads of laundry.</p> <ul style="list-style-type: none"> <li>► Regularly dry a load weighing more than 3 kg of damp laundry until the programme ends.</li> </ul> <p>The appliance's ventilation opening is blocked.</p> <ul style="list-style-type: none"> <li>► Ensure that the ventilation opening of the appliance is kept clear.</li> </ul> <p>Heat exchanger is soiled.</p> <ul style="list-style-type: none"> <li>► Run the basic appliance care programme → <i>Page 27</i>.</li> </ul>
Humming, whirring or pumping noises.	Not a fault. The compressor, compressor ventilation or condensation pump is active. No action required.
The laundry is too damp.	<p>The selected programme is unsuitable for the type of fabric.</p> <ul style="list-style-type: none"> <li>► Set a time programme for subsequent drying. → <i>Page 19</i></li> </ul> <p>The load is too large.</p> <ul style="list-style-type: none"> <li>► Observe the programme's maximum load capacity. → <i>Page 18</i></li> </ul> <p>After the end of the programme, warm laundry feels damper than it actually is.</p> <ol style="list-style-type: none"> <li>1. Remove the laundry from the drum as soon as the drying programme has finished.</li> <li>2. Spread the items of laundry for cooling.</li> </ol> <p>The selected dryness level is unsuitable.</p> <ul style="list-style-type: none"> <li>► Change the dryness level. → <i>Page 25</i></li> </ul> <p>The dryness level is not adjusted.</p> <ul style="list-style-type: none"> <li>► Adjust the dryness level. → <i>Page 26</i></li> </ul>



<b>Fault</b>	<b>Cause and troubleshooting</b>
The laundry is too damp.	The load is too small. ▶ Set a time programme for subsequent drying. → <i>Page 19</i>
	The moisture sensor is dirty. ▶ Clean the moisture sensor. → <i>Page 29</i>
	The appliance has interrupted the drying process due to the condensation container being full. ▶ Empty the condensation container. → <i>Page 24</i>
Creasing.	The selected programme is unsuitable for the type of fabric. ▶ Set a suitable programme. → <i>Page 18</i>
	The load is unsuitable. ▶ Observe the programme's maximum load capacity. → <i>Page 18</i> ▶ Prepare the laundry. → <i>Page 21</i>
	The laundry lies in the drum for too long after drying. <b>1.</b> Remove the laundry from the drum as soon as the drying programme has finished. <b>2.</b> Spread the items of laundry for cooling.
	Easy Care fabrics have been dried for too long. ▶ Change or adjust the dryness level. → <i>Page 25</i>
	The crease-reduction function is not activated. ▶ Activate the crease-reduction function. → <i>Page 17</i>
Water is leaking from the appliance.	Appliance is not correctly aligned. ▶ Align the appliance. → <i>Page 13</i>
	Water outlet hose is not connected correctly. ▶ Check the installation of the water outlet hose. → <i>Page 11</i>
Condensation collects in the condensation container despite the water outlet hose being connected.	Not a fault. The remaining volume of condensation may remain in the condensation container. No action required.
	Water outlet hose is not connected correctly. ▶ Check the installation of the water outlet hose. → <i>Page 11</i>
Odours have formed in the appliance.	Stubborn dirt in the appliance or an extended appliance downtime of more than one month. ▶ Run the intensive appliance care programme. → <i>Page 27</i>

---

## 18 Transportation, storage and disposal

### 18.1 Disposing of old appliance

Valuable raw materials can be re-used by recycling.

#### **WARNING**

##### **Risk of harm to health!**

Children can lock themselves in the appliance, thereby putting their lives at risk.

- ▶ Do not install the appliance behind a door as this may obstruct the appliance door or prevent it from opening.
- ▶ With redundant appliances, unplug the power cord. Then cut through the cord and damage the lock on the appliance door beyond repair so that the appliance door will no longer close.

#### **WARNING**

##### **Risk of fire!**

The refrigerant R290 used in this appliance is environmentally friendly. It is however flammable and may ignite if appliances are not disposed of properly.

- ▶ Dispose of the appliance properly.
  - ▶ Do not damage the tubing of the refrigerant circuit.
1. Unplug the appliance from the mains.
  2. Cut through the power cord.
  3. Dispose of the appliance in an environmentally friendly manner.  
Information about current disposal methods are available from your specialist dealer or local authority.



This appliance is labelled in accordance with European Directive 2012/19/EU concerning used electrical and electronic appliances (waste electrical and electronic equipment - WEEE). The guideline determines the framework for the return and recycling of used appliances as applicable throughout the EU.

---

---

## 19 Customer Service

Function-relevant genuine spare parts according to the corresponding Eco-design Order can be obtained from Customer Service for a period of at least 10 years from the date on which your appliance was placed on the market within the European Economic Area.

**Note:** Under the terms of the manufacturer's warranty the use of Customer Service is free of charge.

Detailed information about the warranty period and the warranty conditions in your country is available via the QR code on the enclosed document on service contacts and warranty conditions, from our customer service or on our website.

If you contact Customer Service, you will require the product number (E-Nr.) and the production number (FD) of your appliance.

You can find the contact details for our customer service via the QR code on the enclosed document on service contacts and warranty conditions or on our website.

**19.1 Product number (E-Nr.)  
and production number  
(FD)**

You can find the product number (E-Nr.) and the production number (FD) on the appliance's rating plate.

Depending on the model, the rating plate is located:

- On the inside of the door.

- On the inside of the maintenance flap.
- On the rear of the appliance.

Make a note of your appliance's details and the Customer Service telephone number to find them again quickly.

**20 Consumption values**

The **Eco** programme is suitable for drying cotton laundry with a normal dampness level, and is the most efficient programme for drying damp cotton laundry in terms of combined energy consumption. This programme serves to assess compliance with Regulations (EU) 2023/2533 and (EU) 2023/2534. The consumption values for this programme that are declared on the energy label refer to a moisture content of the laundry of 60%.

The values specified for other programmes are indicative only and were determined in accordance with the applicable standard EN61121.

The actual values may deviate from the indicated values depending on the type of fabric, composition of laundry to be dried, residual moisture in the fabric, set degree of dryness, amount of laundry being loaded, environmental conditions and the activation of additional functions.

The expected programme duration/"Ready in" time that is shown on the appliance display when selecting the programme is based on the spin speed in the washing machine of 1000 rpm when the appliance is delivered.

Programme	Final moisture level (%)	Load (kg)	Spin speed (rpm)	Initial moisture level (%)	Programme duration (h:min)	Energy consumption (kWh/cycle)
Cottons + Cupboard Dry Plus	-3.0	9.0	1400	50	4:04	1.98
Cottons + Cupboard Dry Plus	-3.0	4.5	1400	50	3:12	1.38
Cottons + Cupboard Dry Plus	-3.0	9.0	1000	60	4:27	2.24
Cottons + Cupboard Dry Plus	-3.0	4.5	1000	60	3:26	1.52
Cottons + Cupboard Dry Plus	-3.0	9.0	800	70	4:50	2.49

<b>Programme</b>	<b>Final moisture level (%)</b>	<b>Load (kg)</b>	<b>Spin speed (rpm)</b>	<b>Initial moisture level (%)</b>	<b>Programme duration (h:min)</b>	<b>Energy consumption (kWh/cycle)</b>
Cottons + Cupboard Dry Plus	-3.0	4.5	800	70	3:39	1.67
Cottons + Cupboard Dry	-1.5	9.0	1400	50	3:16	1.62
Cottons + Cupboard Dry	-1.5	4.5	1400	50	2:23	1.01
Cottons + Cupboard Dry	-1.5	9.0	1000	60	3:38	1.86
Cottons + Cupboard Dry	-1.5	4.5	1000	60	2:36	1.15
Cottons + Cupboard Dry	-1.5	9.0	800	70	4:00	2.09
Cottons + Cupboard Dry	-1.5	4.5	800	70	2:49	1.30
Eco	0.0	9.0	1400	50	2:52	1.44
Eco	0.0	4.5	1400	50	1:54	0.81
Eco <sup>1</sup>	0.0	9.0	1000	60	3:15	1.68
Eco	0.0	4.5	1000	60	2:05	0.92
Eco	0.0	9.0	800	70	3:38	1.92
Eco	0.0	4.5	800	70	2:16	1.03
Cottons + Iron Dry	12.0	9.0	1400	50	2:05	1.01
Cottons + Iron Dry	12.0	4.5	1400	50	1:22	0.56
Cottons + Iron Dry	12.0	9.0	1000	60	2:28	1.27
Cottons + Iron Dry	12.0	4.5	1000	60	1:35	0.70
Cottons + Iron Dry	12.0	9.0	800	70	2:51	1.52
Cottons + Iron Dry	12.0	4.5	800	70	1:48	0.85
Easy Care + Cupboard Dry Plus	0.0	3.5	800	40	1:27	0.56
Easy Care + Cupboard Dry Plus	0.0	3.5	600	50	1:38	0.66

<sup>1</sup> The acoustical noise emissions during the drying cycle are 61 dB.

Programme	Final moisture level (%)	Load (kg)	Spin speed (rpm)	Initial moisture level (%)	Programme duration (h:min)	Energy consumption (kWh/cycle)
Easy Care + Cup-board Dry	2.0	3.5	800	40	1:08	0.43
Easy Care + Cup-board Dry	2.0	3.5	600	50	1:20	0.53
Easy Care + Iron Dry	12.0	3.5	800	40	0:51	0.31
Easy Care + Iron Dry	12.0	3.5	600	50	1:02	0.40
Delicates	0.0	2.0	-	-	1:05	0.43

## 21 Technical data

Appliance height	84.2 cm
Appliance width	59.8 cm
Appliance depth	61.3 cm
Appliance depth with door closed	64.8 cm
Appliance depth with door open	109.6 cm
Weight	54.4 kg
Maximum load	9.0 kg
Mains voltage	220-240 V, 50 Hz
⇌ Minimum installation protection	10 A
Nominal power	600 W
Power consumption	<ul style="list-style-type: none"> <li>■ Off mode: 0.30 W</li> </ul>
Ambient temperature	<ul style="list-style-type: none"> <li>■ Minimum: 5 °C</li> <li>■ Maximum: 35 °C</li> </ul>
Length of the power cord	179.5 cm

This product contains light sources from energy efficiency class F. These light sources are available as a spare part and must only be replaced by trained specialist staff.

More information about your model can be found online at <https://eprel.ec.europa.eu/qr/2412286><sup>1</sup>.

This web address is linked to the official EU EPREL product database.

<sup>1</sup> Only applies to countries in the European Economic Area. This website address is available from 1st July 2025.

This image shows a full page of blank, lined paper. It features approximately 20 evenly spaced horizontal grey lines across the entire width of the page, providing a guide for handwriting or typing. The background is a solid off-white color.





# Thank you for buying a Bosch Home Appliance!

Register your new device on MyBosch now and profit directly from:

- **Expert tips & tricks for your appliance**
- **Warranty extension options**
- **Discounts for accessories & spare-parts**
- **Digital manual and all appliance data at hand**
- **Easy access to Bosch Home Appliances Service**

Free and easy registration – also on mobile phones:

**[www.bosch-home.com/welcome](http://www.bosch-home.com/welcome)**



## Looking for help? You'll find it here.

Expert advice for your Bosch home appliances, help with problems or a repair from Bosch experts.

Find out everything about the many ways Bosch can support you:

**[www.bosch-home.com/service](http://www.bosch-home.com/service)**

Contact data of all countries are listed in the attached service directory.

### **BSH Hausgeräte GmbH**

Carl-Wery-Straße 34  
81739 München, GERMANY  
[www.bosch-home.com](http://www.bosch-home.com)

A Bosch Company

Valid within Great Britain:  
Imported to Great Britain by  
BSH Home Appliances Ltd.  
Grand Union House  
Old Wolverton Road  
Wolverton, Milton Keynes  
MK12 5PT  
United Kingdom



**9002022544** (050711)

en