



Register your  
appliance and join  
the Bosch  
family of perks:  
[bosch-home.com/us/  
mybosch](https://bosch-home.com/us/mybosch)



# Dishwasher

100 Series, 100 Series Plus

[en-us, fr-ca] Quick Start and Safety Guide

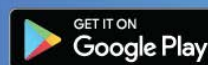


Home Connect



Connect  
your  
dishwasher  
with Home  
Connect  
today!

1 Get the app



Google Play and the Google Play logo are trademarks of Google LLC. Apple and the Apple logo are trademarks of Apple Inc.

2 Scan QR code





# IMPORTANT SAFETY INSTRUCTIONS

## READ AND SAVE THESE INSTRUCTIONS

Read all instructions carefully before use. These precautions will reduce the risk of electrical shock, fire and injury to persons. When using kitchen appliances, basic safety precautions must be followed including those in the following pages.

### 1.1 Safety definitions

Here you can find explanations of the safety signal words used in this manual.

#### **WARNING**

This indicates that death or serious injuries may occur as a result of non-observance of this warning.

#### **CAUTION**

This indicates that minor or moderate injuries may occur as a result of non-observance of this warning.

#### **NOTICE:**

This indicates that damage to the appliance or property may occur as a result of non-compliance with this advisory.

**Note:** This alerts you to important information and/or tips.

### 1.2 General information

To reduce the risk of fire, electrical shock, or serious injury, observe the following.

- Read and understand all instructions before using the appliance.
- Keep the provided documents in a safe place for future reference or for the next owner.
- Do not connect the appliance if it has been damaged in transit.
- Severe product damage and/or injury could result from the use of unqualified service technicians or non-original parts. All repairs must be performed by an authorized service provider using only original equipment factory replacement parts.
- NSF/ANSI 184 Certified residential dishwashers are not intended for licensed food establishments.

### 1.3 Intended use

Only use this appliance:

- for cleaning household dishware.
- In private households and in enclosed spaces in a residential environment.

- Up to an altitude of 13,100 ft (4000 m) above sea level.

### 1.4 Restrictive Use

This appliance is not intended for use by persons (including children) with reduced physical, sensory or mental capabilities, or lack of experience and knowledge, unless they have been given supervision or instruction concerning use of the appliance by a person responsible for their safety.

### 1.5 Grounding instructions

This appliance must be grounded to a metal, permanent wiring system or an equipment grounding conductor must be run with the circuit conductors and connected to the equipment grounding terminal or lead on the dishwasher. See the Installation Instructions included with this dishwasher for more information on electrical requirements.

#### **WARNING**

Improper connection of the equipment grounding conductor can result in risk of electric shock.

- ▶ This appliance must be grounded. In the event of a malfunction or breakdown, grounding will reduce the risk of electric shock by providing a path of least resistance for electric current. This appliance is equipped with a cord having an equipment-grounding conductor. Check with a qualified electrician or authorized service representative if you are in doubt whether the appliance is properly grounded.

### 1.6 Safe use

Follow these safety instructions when using the appliance.

#### **WARNING**

To reduce the risk of serious injury, observe the following.

- ▶ Read all instructions before using this dishwasher.
- ▶ Use this dishwasher only for its intended function, which is the washing of household dishware and kitchenware rated as dishwasher safe.
- ▶ Only use detergents or rinsing agents recommended for use in a dishwasher, and keep them out of the reach of children.
- ▶ Do not abuse, sit or stand on the door or dish racks of the dishwasher.



# IMPORTANT SAFETY INSTRUCTIONS

## READ AND SAVE THESE INSTRUCTIONS

### WARNING

Under certain conditions, hydrogen gas may be produced in a hot water system that has not been used for two weeks or more. Hydrogen gas is explosive.

- ▶ Before using a dishwasher that is connected to a hot water system that has been unused for two weeks or longer, turn on all hot water faucets and let the water flow from each for several minutes. This will release any accumulated hydrogen gas. As the gas is explosive, do not smoke or use an open flame during this time.

### WARNING

To avoid risk of electric shock, observe the following.

- ▶ Only use the appliance in enclosed residential space according to the installation manual.
- ▶ Never expose the appliance to intense heat or humidity.
- ▶ Do not use any steam cleaners or high-pressure cleaners to clean this appliance. If not followed, excess moisture can accumulate.

### WARNING

To avoid risk of injury, when loading items to be washed, observe the following.

- ▶ Locate sharp items so they are not likely to damage the door seal.
- ▶ Load knives and other sharp utensils with their handles up to reduce the risk of cut-type injuries.
- ▶ Do not wash plastic items unless they are marked "dishwasher safe" or the equivalent. For plastic items not so marked, check the manufacturer's recommendations.
- ▶ Do not operate your dishwasher unless all enclosure panels are in place.
- ▶ Do not tamper with or override controls and interlocks.

### WARNING

For safe care and operation of your appliance, observe the following.

- ▶ Follow the safety instructions and directions for use on the detergent and rinse aid product labels.
- ▶ Do not use harsh chemicals such as bleach-based products to clean your dishwasher. Some bleach-based products can damage your dishwasher and may present health hazards!

- ▶ Always use caution when opening the door during or following a wash cycle as hot water or steam may escape. Do not fully open the door until water noises have stopped and steam has subsided.
- ▶ To avoid floor damage and possible mold growth, do not allow wet areas to remain around or under the dishwasher.

### NOTICE:

Water and power shut off

- ▶ It is highly recommended for the end user to become familiar with the procedure to shut off the incoming water supply and the procedure to shut off the incoming power supply. See the installation instructions or contact your installer for more information.

## 1.7 Risk to children

Follow these safety instructions if there are children in your home.

### WARNING

To reduce risk of injury to children, observe the following.

- ▶ Do not allow children to play in or on the dishwasher.
- ▶ When children become old enough to operate the appliance, it is the responsibility of the parents/legal guardians to ensure the children are instructed in safe practices by qualified persons.
- ▶ Remove the dishwasher door to the washing compartment when removing an old dishwasher for service or discarding.

## 1.8 State of California Proposition 65 Warnings

This product may contain a chemical known to the State of California, which can cause cancer or reproductive harm. Therefore, the packaging of your product may bear the following label as required by California:

**STATE OF CALIFORNIA PROPOSITION 65 WARNING:**



**WARNING**

Cancer and Reproductive Harm - [www.P65Warnings.ca.gov](http://www.P65Warnings.ca.gov)

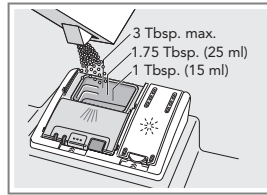
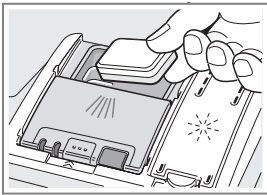
## 2 Getting started

**Tip:** Connect your appliance to the Home Connect™ app. You can conveniently adjust the settings and download additional cycles and options with the app.

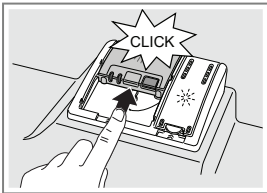
### 2.1 Add Detergent

Use detergent tabs, fresh powdered detergent or liquid detergent. For quick cycles, use powdered or liquid detergent instead of tabs.

**Tip:** The dispenser lid should slide closed easily.



To close the cover, push until it clicks.

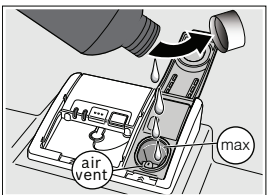


### 2.2 Add rinse aid

This dishwasher is designed to be used with rinse aid, which enhances drying results and shine.

**Tip:** Remove lid of the bottle for easier pouring and avoid the air vent.

**NOTICE:** The amount of rinse aid dispensed can be adjusted in the settings. Only change the setting if streaks remain on the dishes (lower the amount), or if dishes are not getting dry enough (increase the amount).



### 2.3 Start your dishwasher

1. Press the On/Off button.
2. Select a cycle and option if desired.
3. Press Start.

**Important:** After pressing Start, the door must be shut within 4 seconds, otherwise the operation will be paused. If the door is open for more than 4 seconds, or there is any other cycle interruption, press the Start button again. This is to protect against unintentional operation, e.g. by children.

## 3 Tips

### 3.1 Loading tips

Scan the code with your smart phone to watch the video on the best practices for loading dishes and avoiding some common mistakes.



Scan here for loading tips

#### **⚠ WARNING**

- Load sharp items (knives, skewers, etc.) pointing down. Failure to do so may result in injury.
- To avoid risk of injury, always use caution when opening the door during or following a wash cycle as hot water or steam may escape. Do not fully open the door until water noises have stopped and steam has subsided.

### 3.2 Maintenance tips

1. Clean surfaces with damp cloth and mild soap.

**NOTICE:** Do not use abrasives or bleach based cleaners. Do not use stainless steel cleaner on black stainless or anti-fingerprint surfaces.

2. Clean the filter 3-12 times a year, depending on usage.



Scan here for how to clean the filter



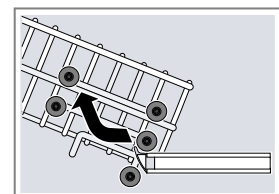
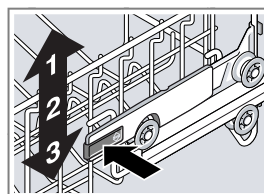
Scan here for how to clean the spray arms

3. It is also recommended to run **Machine Care** program to keep the tub clean. It is accessible through the Home Connect™ app.

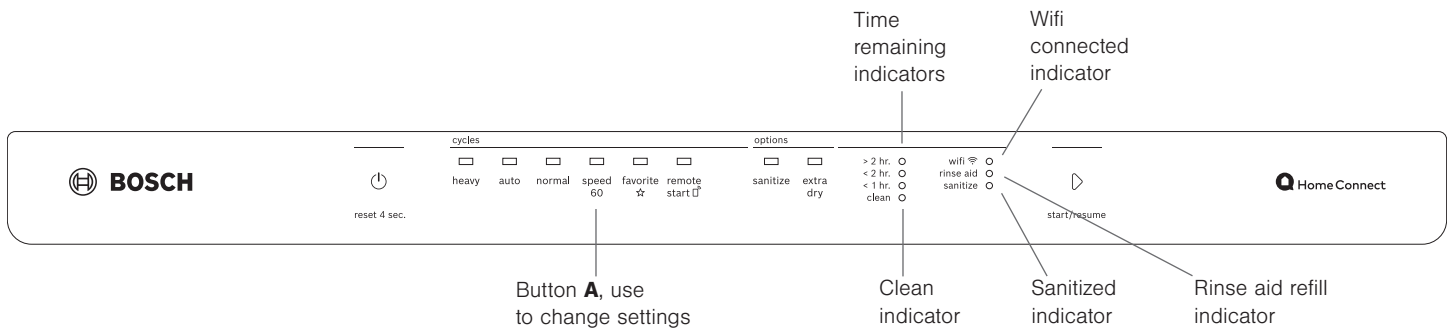
### 3.2 Usage tips

1. Use rinse aid.
2. Scrape food off, do not rinse.
3. Adjust upper rack for large items.

\*rack configuration will depend on your model.



## 4 Cycles and Options



Cycles	Level of dirt	What it does	Examples of dishes
<b>Heavy</b>	Baked-on/greasy	Longer cycle and higher temperature	Baked-on lasagna casserole
<b>Auto</b>	Not baked-on	Adjusts time and intensity automatically by soil sensing	Everyday load
<b>Normal</b>	Not baked-on	Cycle to save energy and water	Everyday load
<b>Speed60®</b>	Light, not dried on	1 hour cycle which includes drying	Everyday load
<b>Delicate*</b>	Light	Lower temperature for sensitive dishes, plasticware or glasses	Delicate dishes and glasses
<b>Rinse*</b>	Fresh, not dried on	Quick rinse, using less water than hand rinsing	Everyday load, to use between cycles
<b>Favorite</b>	At one touch, access a saved Cycle and Option combination. Set this up in the Home Connect app or press the button for 3 seconds and it stores the currently selected program/option combination.		
<b>Remote Start</b>	Allows user to start the dishwasher remotely. See the Home Connect™ app.		
<b>Machine Care*</b>	An intense program to clean the tub. Run without dishes.		

Options	Level of dirt	What it does	Examples of dishes
<b>Sanitize</b>	Any	Increases cycle length and temperature for disinfection	Cutting boards, bottles
<b>Extra Dry™</b>	Any	Raises the temperature and extends the drying time	Everyday dishes
<b>Extra Quiet*</b>	Any	Reduces the noise level for 30 minutes. Can be activated at any time and multiple times. Run time is extended.	Any
<b>Fast Forward*</b>	Any	Can be activated at any time during the cycle, this option reduces the run time.	Any
<b>HalfLoad*</b>	Light	For small, lightly soiled dishes that fill primarily the top rack.	Everyday dishes
<b>Eco*</b>	Any	Increases run time but reduces energy and water consumption	Any
<b>Delay*</b>	Any	Allows you to delay the start of the cycle up to 24 hours.	Any

\* Through the Home Connect™ app only. You can also use the Home Connect™ app to access additional cycles and options and save them.

**Note:** The Energy Guide label was based on the Normal cycle as follows: The unit was tested without any rinse aid (liquid) in the rinse aid dispenser. A single dose of detergent was inserted into the detergent dispenser, and no detergent was used in the prewash.

## 4 Settings

### 4.1 Available Settings

Below are some commonly used settings. To see all the settings refer to the full online manual or go to Dishwasher » Settings in the Home Connect app.

Setting	Factory setting	Description
Rinse Aid Off/Low/Medium/High	Medium	Dispenses the amount of rinse aid, which affects drying.
Intensive drying Off/On	Off	Improved drying for glasses and plastic, by increasing the temperature and length.
Signal Volume Off/Low/Medium/High	Medium	The volume of the signal for the end of cycle.

### 4.2 Adjusting the settings

**Tip:** The simplest way to change the settings is with the Home Connect™ app.

First Steps to adjust any setting:

Open the door and press the ON/OFF button.

Hold down Button **A** for 3 seconds, until the Rinse Aid indicator light flashes.

Release button, then follow steps below to adjust specific setting.

To adjust the rinse aid:

1. Press the Start button repeatedly until the right amount of rinse aid has been set. 0 (off), 1(low), 2(medium), or 3(high) LEDs above cycle buttons will light up accordingly.
2. Press button **A** for 3 seconds to save the setting.

To turn on intensive drying:

1. Press button **A** until the Clean and Sanitize lights flash.
2. Press the Start button until 1 LED light above the heavy cycle button is on (intensive dry is on).
3. Press button **A** for 3 seconds to save the setting.

To adjust the signal volume:

1. Press button **A** until the Clean and Rinse Aid lights flash.
2. Press the Start button repeatedly until the preferred volume level has been selected. 0 (off), 1(low), 2(medium), or 3(high) LEDs above cycle buttons will light up accordingly.
3. Press button **A** for 3 seconds to save the setting.

To reset to factory settings:

1. Press button **A** until the Clean, Sanitize and Rinse Aid lights flash.
2. Press the Start button. The 3 LEDs above cycle buttons will blink alternatively for 1 minute. The factory settings have been restored.

## 5 Frequently Asked Questions

Q: Why is food remaining on dishes after I run the cycle?

- It is possible the dishes do not have adequate clearance between them. Also, be sure nothing is blocking the spray arms and that the filter is clean. Select the Heavy cleaning cycle.

Q: Why does the cycle run a long time?

- Sensors in the dishwasher automatically increase the cycle time to ensure a good wash when heavy soil is detected.
- Incoming water may not be hot enough and dishwasher has to heat it.

Download the Home Connect™ app to access the full Use and Care Manual or visit: [www.bosch-home.com/us/service/get-support/owner-manuals](http://www.bosch-home.com/us/service/get-support/owner-manuals). Type in the Model Number which can be found inside the dishwasher door:



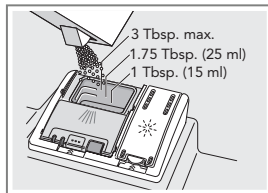
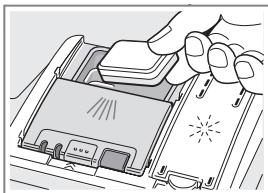
## 2 Mise en Marche

**Astuce :** Connectez votre appareil à l'app Home Connect. Vous pouvez aisément modifier les réglages et télécharger de nouveaux programmes et options depuis l'app.

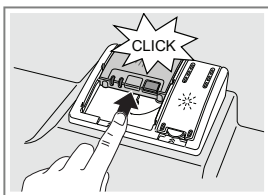
### 2.1 Ajout de Détergent

Utilisez du détergent en pastilles, en poudre ou liquide pour obtenir les meilleurs résultats. Pour les programmes courts, utilisez des produits en poudre ou liquides. **Astuce :** Le couvercle du distributeur devrait coulisser facilement.

**Astuce :** Le couvercle du distributeur devrait coulisser facile-



Pour fermer le couvercle, poussez jusqu'à ce qu'il s'enclenche.

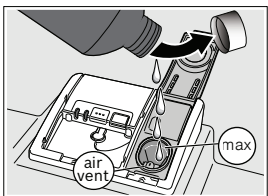


### 2.2 Ajout de produit de rinçage

Pour un séchage optimal, utilisez toujours un produit de rinçage liquide, même si votre détergent contient un produit de rinçage ou des additifs de séchage.

**Astuce :** Retirez le bouchon du flacon et évitez le trou de purge pour un remplissage plus facile.

La quantité de produit de rinçage peut se régler dans les paramètres. Modifiez le réglage si vous observez des traces sur la vaisselle (réduire la quantité), ou si la vaisselle n'est pas suffisamment sèche (augmenter la quantité).



### 2.3 Demarrer le lave-vaisselle

1. Appuyez sur le bouton On/Off pour allumer le lave-vaisselle.
2. Sélectionnez un cycle et les options désirées.
3. Appuyez sur le bouton Start pour démarrer le programme.

**Astuce :** Après avoir appuyé sur start, vous devez fermer la porte dans les 4 secondes suivantes sans quoi le programme se met en pause. Si la porte reste ouverte plus de 4 secondes, ou quelque interruption que ce soit, le bouton start doit être pressé de nouveau. Cela sert à prévenir les opérations involontaires, par exemple par les enfants.

## 3 Des Astuces

### 3.1 Conseils de chargement

Scannez le code QR avec votre smartphone pour voir une vidéo sur la meilleure façon de charger la vaisselle et éviter les erreurs communes.



Scannez ici pour des conseils de chargement

#### **AVERTISSEMENT**

- Déposez les objets tranchants (couteaux, brochettes, etc.) pointés vers le bas. Les objets tranchants pointés vers le haut pose un risque de blessure.
- Pour éviter des risques de blessures, faites toujours attention lorsque vous ouvrez la porte pendant ou après un cycle de lavage car des rejets d'eau chaude ou de vapeur peuvent survenir. N'ouvrez pas complètement la porte avant que les bruits d'eau n'aient cessés et que la vapeur ne se soit dissipée.

### 3.2 Maintenance

1. Nettoyez les surfaces avec un linge humide et du savon doux.

**AVIS :** N'utilisez pas de nettoyeurs abrasifs ou à base de javellisant. N'utilisez pas de nettoyeur pour l'acier inoxydable sur des surfaces en acier inox noir ou anti-empreintes.

2. Nettoyez le filtre 3 à 12 fois par année, selon votre usage.



Nettoyage du filtre



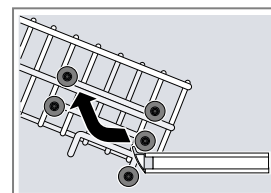
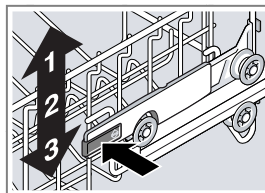
Nettoyage des bras de lavage

3. Il est aussi recommandé de lancer le programme **Machine Care** pour maintenir la cuve propre. Il est accessible via la app Home Connect.

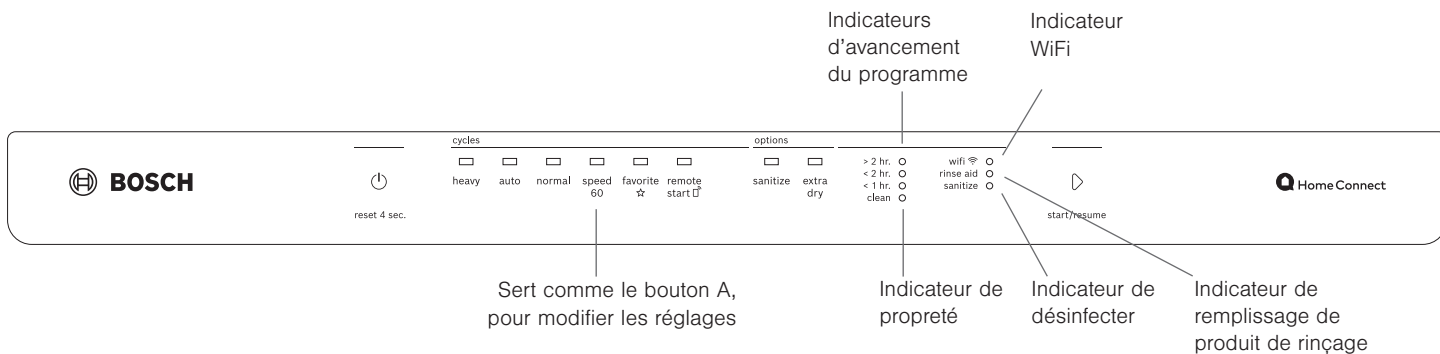
### 3.2 Astuces pour de meilleurs résultats

1. Utilisez un produit de rinçage.
2. Videz les assiettes sans les rincer.
3. Ajustez le panier supérieur au besoin pour accommoder les plus gros objets.

\*la configuration dépendra de votre modèle.



## 4 Programmes et Options



Programmes	Degré de saleté	Fonctionnement	Exemples de plats
<b>Heavy</b> (Intensif)	Plats croustueux/gras	Cycle allongé et température plus élevée	Casserole de lasagne collée
<b>Auto</b>	Sans résidus collés	Adapte l'intensité et la durée du cycle en détectant la saleté	Charge quotidienne
<b>Normal</b>	Sans résidus collés	Programme économisant l'énergie et l'eau.	Charge quotidienne
<b>Speed60®</b>	Frais, pas séché	Cycle d'une heure comprenant le séchage	Charge quotidienne
<b>Delicate*</b>	Léger	Température plus basse pour la vaisselle sensible, les ustensiles en plastique ou les verres	plats et verres délicats
<b>Rinse*</b>	N'importe lequel	Rinçage rapide utilisant moins d'eau qu'un lavage des mains	
<b>Favorite</b>	D'une touche, accédez à un programme et une combinaison d'options spécifiques. Configurez-les dans l'app Home Connect ou appuyez sur ce bouton pendant 3 secondes et la combinaison programme/options sélectionnée sera sauvegardée.		
<b>Remote Start</b>	Permet à l'utilisateur de démarrer le lave-vaisselle à distance. Voir la app Home Connect.		
<b>Machine Care*</b>	Pour nettoyer la cuve du lave-vaisselle. Utiliser uniquement lorsque l'appareil est vide.		

Options	Degré de saleté	Fonctionnement	Exemples de plats
<b>Sanitize</b> (Désinfecter)	N'importe lequel	Rallonge le cycle et augmente la température pour désinfecter	Planches à découper, bouteilles
<b>Extra Dry</b>	N'importe lequel	Augmente la température et prolonge le temps de séchage	Charge quotidienne
<b>Extra Quiet*</b>	N'importe lequel	Réduit le bruit pendant 30 minutes. Peut être activé à tout moment. Le temps de cycle est prolongé.	N'importe lequel
<b>Fast Forward*</b>	N'importe lequel	Activable à tout moment du cycle, cette option réduit le temps de fonctionnement.	N'importe lequel
<b>HalfLoad*</b>	Léger	Pour les petits plats légèrement sales qui remplissent principalement le panier supérieur.	Charge quotidienne
<b>Eco*</b>	N'importe lequel	Augmente le temps de cycle mais réduit la consommation d'énergie et d'eau	N'importe lequel
<b>Delay*</b>	N'importe lequel	Permet aux utilisateurs de retarder le départ du cycle jusqu'à 24 heures	N'importe lequel

\* **Astuce** : Vous pouvez utiliser la app Home Connect pour télécharger des programmes et options supplémentaires et les enregistrer. Le programme Machine Care est aussi disponible via l'app.

**Remarque** : L'étiquetage Energy Guide se base sur le cycle Normal comme suit : l'unité a été testée avec un distributeur de produit de rinçage (liquide) vide. Une seule dose de détergent a été introduite dans le distributeur de détergent, aucun détergent n'étant utilisé dans le cycle de pré-lavage.



## 4 LES RÉGLAGES

### 4.1 Les réglages disponible

Ci-dessous la liste des réglages les plus courants. Pour voir tous les réglages disponibles, reportez-vous au manuel complet ou allez dans la section appareil>réglages de l'app Home Connect

Réglage	Réglages d'usine	Description
Agent de rinçage OFF/Faible/Moyen/Élevé	Moyen	La quantité de produit de rinçage utilisée affecte le séchage.
Signal de fin de cycle OFF/Faible/Moyen/Élevé	Moyen	Le signal retentit à la fin du cycle.
Séchage intensif Off/On	Off	Séchage amélioré pour les verres et la vaisselle en plastique.

### 4.2 Ajuster les réglages

**Astuce :** La façon la plus simple de changer les réglages est avec l'app Home Connect.

Premières étapes :

Ouvrez la porte et appuyez sur le bouton ON/OFF.

Maintenez enfoncé le bouton **A** pendant 3 secondes, jusqu'à ce que le indicateur Rinse Aid clignote.

Relâchez les boutons et suivez les étapes ci-dessous.

Pour changer le réglage de produit de rinçage :

1. Appuyez plusieurs fois sur Start pour sélectionner le réglage souhaité. Les LED 0 (éteinte), 1 (faible), 2 (moyenne) ou 3 (élevée) au-dessus des boutons de cycle s'allumeront en conséquence.
2. Appuyez sur le bouton **A** pendant 3 secondes pour enregistrer le réglage.

Activer le séchage intensif :

1. Appuyez sur le bouton **A** jusqu'à ce que les indicateurs Clean et Sanitize clignent.
2. Appuyez sur le bouton Start jusqu'à ce qu'un voyant LED au-dessus du bouton de cycle intensif soit allumé (le séchage intensif est activé).
3. Appuyez sur le bouton **A** pendant 3 secondes pour enregistrer le réglage.

Pour changer le signal de fin de cycle :

1. Appuyez sur le bouton **A** jusqu'à ce que les indicateurs Clean et Rinse Aid clignent

2. Appuyez plusieurs fois sur **A** Appuyez plusieurs fois sur le bouton Démarrer jusqu'à ce que le niveau de volume souhaité soit sélectionné. Les LED 0 (éteinte), 1 (faible), 2 (moyenne) ou 3 (élevée) au-dessus des boutons de cycle s'allumeront en conséquence.
3. Appuyez sur le bouton **A** pendant 3 secondes pour enregistrer le réglage.

Réinitialise les réglages d'usine :

1. Appuyez sur le bouton **A** jusqu'à ce que les indicateurs Clean, Sanitize et Rinse Aid clignent.
2. Appuyez sur le bouton Démarrer. Les 3 LED au-dessus des boutons de cycle clignoteront alternativement pendant 1 minute. Les réglages d'usine ont été restaurés.

## 5 FAQs

**Q :** Pourquoi reste-t-il de la nourriture sur les assiettes?

- Il est possible que l'écart entre les assiettes ne soit pas assez grand. Assurez-vous également que rien ne gêne la rotation des bras de lavage.

**Q :** Pourquoi le cycle dure-t-il si longtemps?

- Les capteurs dans le lave-vaisselle rallongent automatiquement le cycle pour assurer un bon lavage lorsque la saouillure est détectée.
- L'eau entrante n'est peut-être pas assez chaude et doit donc être réchauffée par le lave-vaisselle.

Téléchargez l'application Home Connect™ pour accéder au guide d'utilisation et d'entretien complet ou visitez : [www.bosch-home.com/us/service/get-support/owner-manuals](http://www.bosch-home.com/us/service/get-support/owner-manuals). Saisissez le modèle qui se trouve sur l'intérieur de la porte. :





## Register your appliance to enjoy customized benefits.

Thank you for being a Bosch customer!  
Simply create a MyBosch account, then register your appliance.  
You'll find a variety of customized information in MyBosch such as:

- **Discounts for filters, cleaners, accessories & parts**
- **Easy access to manuals & appliance specifications**
- **Easy access to part lists**
- **Customized offer for the Bosch Appliance Service Plan (sent by mail after appliance registration)**

Register here:

[www.bosch-home.com/us/owner-support/mybosch](http://www.bosch-home.com/us/owner-support/mybosch)

**BOSCH**  
HOME APPLIANCES  
**SERVICE**

## Looking for help? You'll find it here.

No matter what, no matter when: Bosch is here to support you.  
We're here to assist with usage instructions, cleaning tips,  
accessories & parts, troubleshooting, and repairs.  
Find online resources such as FAQs, how-to-videos, manuals,  
warranties and authorized Bosch servicers at:

[www.bosch-home.com/us/owner-support/get-support](http://www.bosch-home.com/us/owner-support/get-support)

Contact us:

**Please have your Model Number (E-Nr) ready when contacting us.**

1-800-944-2904

[www.bosch-home.com/us/owner-support/contact-us](http://www.bosch-home.com/us/owner-support/contact-us)

**BSH Home Appliances Corporation**

1901 Main Street, Suite 600

Irvine, CA 92614

USA

[www.bosch-home.com](http://www.bosch-home.com)

1-800-944-2904

© 2022 BSH Home Appliances Corporation



**9001673641\_650B.US** (021025) 650 E5

en-us, fr-ca