

Before using for the first time, read the operating instructions.

Setting up Home Connect

Tip: Connect your appliance to a mobile device. You can conveniently change all settings via the Home Connect app.

1. Install the Home Connect app on your mobile device and follow the instructions.



2. Scan the QR code using the Home Connect app.



Overview of water hardness settings

You can find an overview of the water hardness values that can be selected here. A table of country-specific units can be found in the instruction manual.

Hardness range	mmol/l	Setting value
Soft	0 - 1.1	H:00
Soft	1.2 - 1.4	H:01

Medium	1.5 - 1.8	H:02
Medium	1.9 - 2.1	H:03
Medium	2.2 - 2.9	H:04
Hard	3.0 - 3.7	H:05
Hard	3.8 - 5.4	H:06
Hard	5.5 - 8.9	H:07

Setting the water softening system

1. Press .
2. To open the basic settings, press Setup 3 sec. for 3 seconds.
 - ✓ The display shows H:xx.
 - ✓ The display shows **set**.
3. Press or repeatedly until the right water hardness has been set.
4. To save the settings, press Setup 3 sec. for 3 seconds.

Programmes

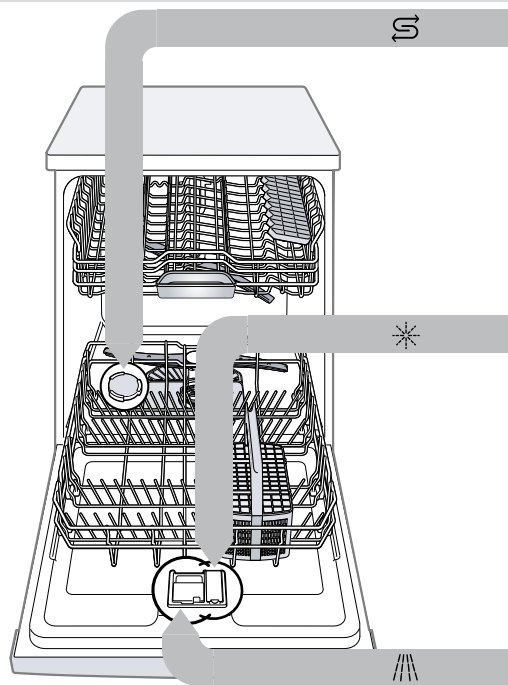
The programme data has been measured in the laboratory according to European standard EN 60436. The consumption figures depend on the programme and additional function selected.

The running time will change if the rinse aid system is switched off or rinse aid needs to be added.

Programme	1) Duration [h:min] 2) Energy [kWh] 3) Water [l]
Intensive	1) 2:05 - 2:15 2) 1,300 - 1,400 3) 11,5 - 14,0
Auto	1) 1:40 - 2:45 2) 0,900 - 1,500 3) 7,0 - 15,5
Eco	1) 4:35 2) 0,849 3) 9,5
Silence	1) 4:00 2) 1,050 3) 11,0
Glass	1) 1:33 - 1:38 2) 0,800 - 0,850 3) 12,0 - 14,0
Speed	1) 1:00 2) 1,300 3) 10,5
Speed	1) 0:29 ² 2) 0,800 3) 10,5
Machine Care	1) 2:10 2) 1,350 3) 15,2
Favourite	1) 0:15 - 0:15 2) 0,050 - 0,050 3) 4,0 - 4,0

¹ Suitable programme for running at night: it takes longer, but is extremely quiet.

² half standard load

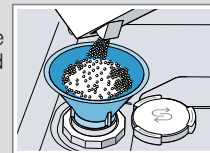


Adding special salt S

To avoid damage to the appliance, only add special salt to the dispenser for special salt just before the programme starts.

1. Unscrew the lid of the dispenser for special salt and remove.
2. On initial start-up: Fill the dispenser right up with water.

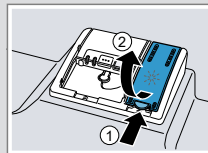
3. Add the special salt to the dispenser. The water in the dispenser is displaced and forced out. Never add detergent.



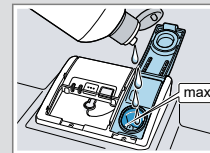
4. Place the lid back on the dispenser and turn to close.

Adding rinse aid *

1. Press the catch on the lid of the dispenser for rinse aid ① and lift ②.



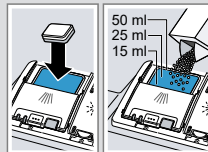
2. Add rinse aid up to the max mark.



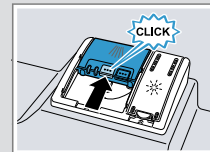
3. Close the lid of the dispenser for rinse aid.
 - ✓ The lid clicks into position.

Adding detergent ///

1. Add the detergent to the dry detergent dispenser.



2. Close the lid of the detergent dispenser.
 - ✓ The lid clicks into position.



How to use your appliance

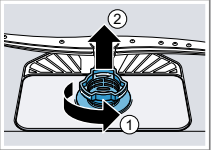
1. Load the tableware. Only clean tableware that is suitable for dishwashers. Remove large remnants of food from the tableware. Check that the spray arms can rotate freely.
2. Add detergent.
3. Switch on the appliance .
4. Select the programme.
5. Start the programme Start.
6. Remove the tableware at the end of the programme.
7. To cancel the programme, press Reset 4 sec. for approx. 4 seconds. The programme is cancelled and ends after approx. 1 minute.

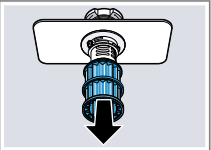
Cleaning filters

1. After each wash check the filters for residue.

2. Turn the coarse filter anticlockwise ① and remove the filter system ②.

3. Pull down the micro filter to remove.



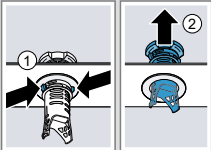


4. Press the locking catches ① together and lift the coarse filter out ②.

5. Clean the filter elements under running water.

6. Re-assemble the filter system.

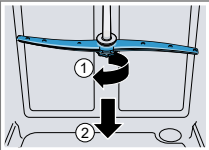
7. Insert the filter system into the appliance and turn the coarse filter clockwise. Make sure that the arrow markings match up.

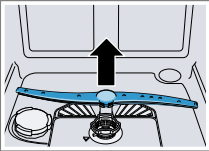


Cleaning spray arms

1. Unscrew the upper spray arm ① and pull down to remove ②.

2. Pull up the lower spray arm to remove.





3. Check the outlet nozzles on the spray arms for blockages under running water and remove any foreign bodies.

4. Insert the lower spray arm.

5. Insert the upper spray arm and screw it firmly in place.

✓ The spray arm clicks into position.

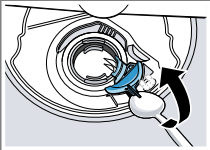
Clean wastewater pump

1. Disconnect the appliance from the power supply.

2. Remove the filter system.

3. Scoop out any water.

4. Prise off the pump cover using a spoon and grip it by the crosspiece.

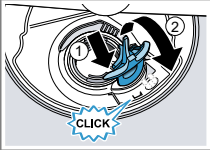


5. Lift the pump cover inwards at an angle and remove.

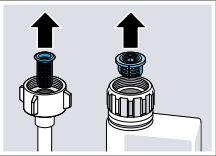
6. Remove any remnants of food and foreign bodies in the area of the impeller.

7. Insert the pump cover ① and press down ②.

✓ The pump cover clicks into position.



8. Install the filter system.

Troubleshooting																	
Fault		Cause and troubleshooting		Fault		Cause and troubleshooting		Fault		Cause and troubleshooting							
E:32-00 will light up alternately or indicator for water supply lights up.		Supply hose is kinked.		E:92-40 will light up alternately.		Filters are soiled or blocked.		Removable streaks are present on glasses, glassware with a metallic appearance and cutlery.		Amount of rinse aid to be dispensed is set too high.							
		▶ Install the supply hose without kinks.				▶ Clean the filters.				▶ Set the rinse aid system to a lower setting.							
		Water tap is turned off.		E:61-02 will light up alternately.		Wastewater pump is blocked.		Rust spots on cutlery.		No rinse aid has been added.							
		▶ Turn on the water tap.				▶ Clean the wastewater pump.				▶ Add rinse aid.							
		Water tap is jammed or furred up.		Remnants of food on tableware.		Cover of the wastewater pump is loose		Detergent residue is present in the detergent dispenser or the tablet collecting tray.		Cutlery is not sufficiently rust-resistant. Knife blades are often more severely affected.							
		▶ Turn on the water tap.				▶ Secure the cover of the Wastewater pump so it clicks into position.				▶ Use rust-resistant tableware.							
		The flow rate must be at least 10 l/min when the water supply is open.				Tableware is placed too close together or basket is overfilled.				Cutlery may also rust if washed together with rusting items.							
		The filters in the water connection of the supply or AquaStop hose are blocked.				1. Arrange tableware with sufficient space in between.				▶ Do not wash rusting items.							
		1. Switch off the appliance.				2. Avoid points of contact.				Spray arms were blocked by tableware so detergent was not rinsed out.							
		2. Pull out the mains plug.				Spray arm rotation is blocked.											
		3. Turn off the water tap.				▶ Arrange tableware so that it does not obstruct spray arm rotation.											
		4. Unscrew the water connection.				Spray arm nozzles are blocked.											
		5. Remove the filter from the supply hose				▶ Clean the Spray arms.				▶ Check that the spray arms are not blocked and can rotate freely.							
						Filters are soiled.											
						▶ Clean the filters.											
						Filters are inserted incorrectly and/or not engaged.											
		6. Clean the filter.				1. Insert the filters properly.											
		7. Re-insert the filter in the supply hose.				2. Engage the filters.											
		8. Screw the water connection back on.				Washing programme selected too weak.											
		9. Check the water connection for leaks.				▶ Select a more intensive washing programme.											
		10. Restore the power supply.				▶ Adjust the sensitivity of the sensors.											
		11. Switch the appliance on.															