

Environmentally-responsible disposal

– Dispose of packaging in an environmentally-responsible manner. This appliance is labelled in accordance with European Directive 2012/19/EU concerning used electrical and electronic appliances (waste electrical and electronic equipment - WEEE). The guideline determines the framework for the return and recycling of used appliances as applicable throughout the EU.

Installation



- Scope of delivery: dryer, instruction manual, installation and maintenance instructions, jug and woollens basket (*depending on the model*).
 - Check dryer for transport damage.
 - The dryer is very heavy. Do not attempt to lift it on your own.
 - Be careful to avoid sharp edges.
 - Do not set up in a room that is susceptible to frost. Freezing water may cause damage.
 - If in doubt, have the appliance connected by a specialist.
- Do not lift the dryer by protruding parts (e.g. the door) - risk of breakage.

1.

Setting up the dryer

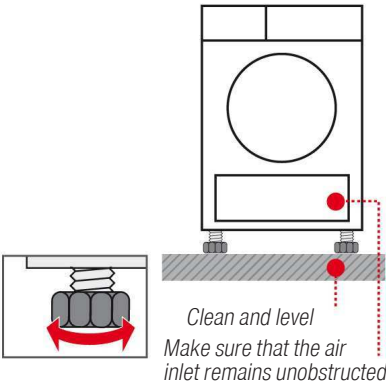
- Ensure that the appliance is installed on a clean, level and firm surface.
- The appliance plug must always be accessible.
- Do not obstruct the air inlet on the dryer.
- Keep the area around the dryer clean.
- Level the dryer using the threaded feet and a spirit level.
- Do not remove the threaded feet under any circumstances.



Do not set up the dryer behind a door or sliding door, as this may obstruct the dryer door or prevent it from opening. This will prevent children from locking themselves in, thereby putting their lives at risk.

Take all accessory parts out of the drum. The drum must be empty.

You must ensure that the drain hose is connected when you operate the appliance. → separate Condensation drain instructions.



2.

For mains connection, see Safety instructions → page 13.

- Connect to an AC earthed socket. If in doubt have the socket checked by a specialist.
- The mains voltage and the voltage shown on the rating plate (→ page 4) must be the same. The connected load and necessary fuse protection are specified on the rating plate.

Frost protection / Transport



Preparation

1. Empty the condensation container → Page 4.
2. Select any programme using the programme selector.
3. Press the ►|| (Start/Pause) button → condensation water is pumped into the container.
4. Wait 5 minutes and then empty the condensation container again.
5. Switch the dryer off using the programme selector.
6. Transport the dryer in a vertical upright position.
7. Following transportation, do not use the dryer for two hours.

The dryer contains residual water.

This can flow out if the dryer is tilted.

The refresher tank must not contain any distilled water. If necessary, run the Steam/Refresh programme.

Care and cleaning



Dryer housing, control panel

Remove detergent residues immediately. Wipe with a soft, damp cloth. Do not clean with a water jet. During drying, water may accumulate between the window and the seal.



Moisture sensor

The dryer is equipped with stainless steel moisture sensors. Moisture sensors measure how damp the laundry is. A thin layer of limescale may build up on the moisture sensors after prolonged use. This must be removed regularly.

1. Open the door and clean the moisture sensors with a damp sponge that has a rough surface.



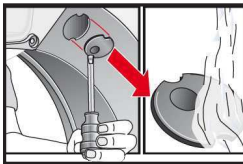
Do not use steel wool or abrasive materials.



Cover for steam nozzle in the drum (depending on the model)

After prolonged operation, limescale and fluff may accumulate on the cover of the steam nozzle. Clean regularly:

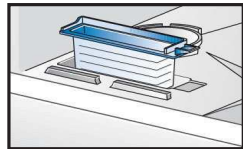
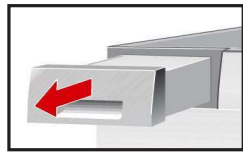
1. Open the door and remove the cover with a screwdriver. Clean the cover under running water.
2. Push and click the cover back in place.



Clean the filter in the refresher tank if it is dirty (depending on the model)

Regularly clean the filter under running water → This prevents stubborn deposits/dirt from building up.

1. Remove the condensation container.
2. Remove the filter and clean it under running water.
3. Re-insert the filter and push in the condensation container until it locks into place.



Care and cleaning



Heat exchanger

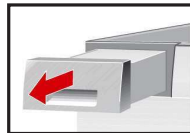
The dryer's heat exchanger is automatically cleaned during drying and **Heat exchanger is being rinsed** is displayed in the display panel. Do not pull out the condensation container during this cleaning process.



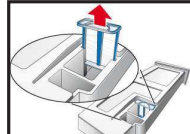
Filter in the condensation container

The filter is cleaned automatically when the condensation container is emptied. However, the filter should still be cleaned regularly under running water → This prevents stubborn deposits/dirt from building up. If the condensation drain is installed (*depending on the model*), it is not necessary to clean the filter → separate *Instructions for the condensation drain*.

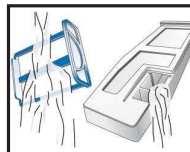
1. Pull out the condensation container.



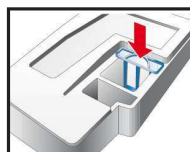
2. Pull the filter out of its snap-in lock.



3. Clean the filter under running water or in the dishwasher.



4. Refit the filter.



5. Push the condensation container back in until it locks into place.



Only operate the dryer with the filter inserted.

After-sales service

If you cannot rectify the fault yourself → instruction manual: *What to do if...* page 12, please contact our after-sales service. We will always find an appropriate solution and avoid unnecessary visits by engineers.

You can find the contact details for your nearest after-sales service on page 12 of the instruction manual or in the after-sales service directory.

Please give the after-sales service the product number (E no.) and the production number (FD) of the appliance.

E-Nr.

FD

Product number

Production number

You can find this information:
inside the door* / in the opened service flap*
and on the rear of the appliance.
*depending on the model

Trust the expertise of the manufacturer. Contact us for assistance. In this way, you can rest assured that the repair will be carried out by trained service technicians using original spare parts.

Optional accessories (order from the after-sales service using the order number, depending on model)

WZ
11410

Washer-dryer stack connection set

The dryer can be placed on top of a suitable washing machine with the same width and depth to save space. The dryer **must be** fastened to the washing machine using this connection set. WZ 20400: with pull-out worktop.

WZ
20600

Wollens basket

For drying **individual** wollen fabrics, sports shoes and soft toys (see separate instructions for "Woollens basket").

WZ
20500

Platform

For easier loading and unloading. The basket contained in the drawer can be used to carry the laundry.

Technical data

Dimensions (DxWxH) 60 x 60 x 85 cm (adjustable height)

Weight approx. 57 kg

Max. capacity* 8 kg / 9 kg

Condensation container 4.6 l

Refresher tank approx. 0.4 l

Connection voltage 220-240 V

Connected load max. 1000 W (for models with a max. 1600 W steam function)

Fuse protection 10 A

Ambient temperature 5 - 35 °C

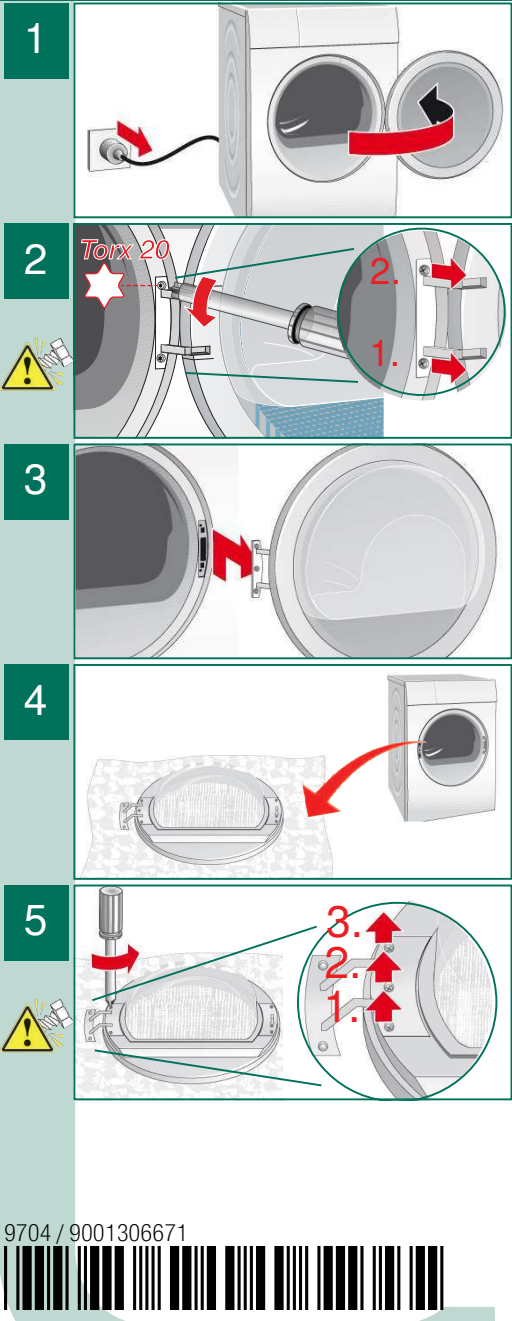
Product number Inside of door

Production number

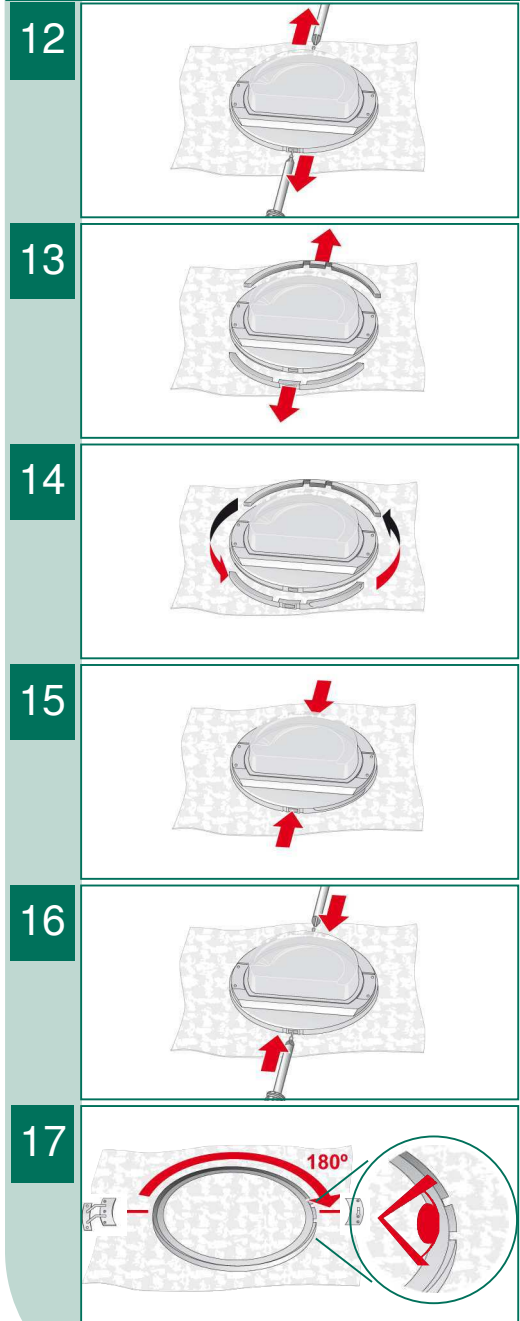
The rating plate can be found on the back of the dryer.

*depending on the model → operating instructions: Programme overview, page 7

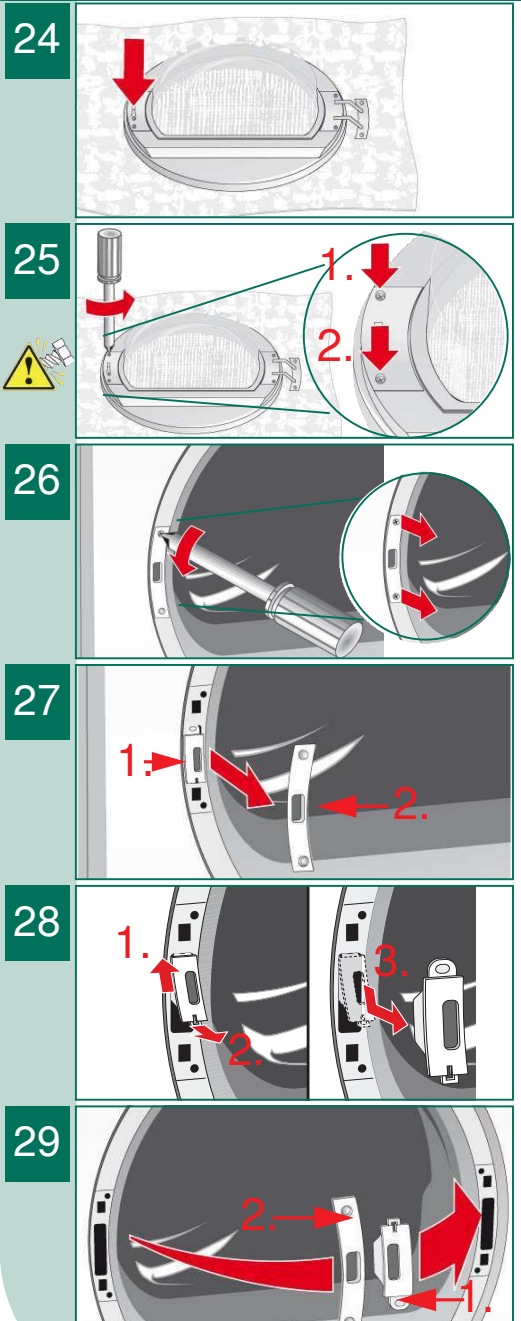
Reversing the door



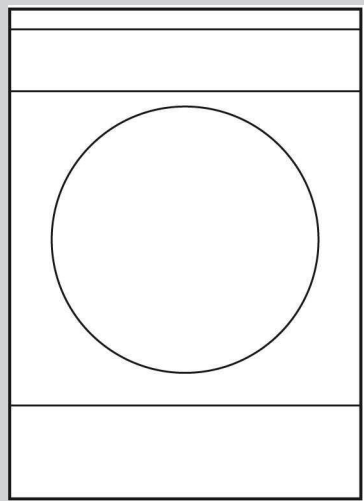
Reversing the door



Reversing the door



Dryer



Installation and maintenance instructions

en

Contents

Page

Environmentally-friendly disposal	1
Installation	1
Frost protection / Transport	1
Care and cleaning	2/3
After-sales service	4
Optional accessories	4
Technical data	4
Reversing the door	5/7



Read these instructions before operating the dryer. You must also observe the separate instruction manual. Keep all the documents in a safe place for future reference, or to pass on to the next owner.

Environmentally-responsible disposal

– Dispose of packaging in an environmentally-responsible manner.
This appliance is labelled in accordance with European Directive 2012/19/EU concerning used electrical and electronic appliances (waste electrical and electronic equipment - WEEE). The guideline determines the framework for the return and recycling of used appliances as applicable throughout the EU.

Installation



- Scope of delivery: dryer, instruction manual, installation and maintenance instructions, jug and woollens basket (*depending on the model*).
 - Check dryer for transport damage.
 - The dryer is very heavy. Do not attempt to lift it on your own.
 - Be careful to avoid sharp edges.
 - Do not set up in a room that is susceptible to frost. Freezing water may cause damage.
 - If in doubt, have the appliance connected by a specialist.
- Do not lift the dryer by protruding parts (e.g. the door) - risk of breakage.

1.

Setting up the dryer

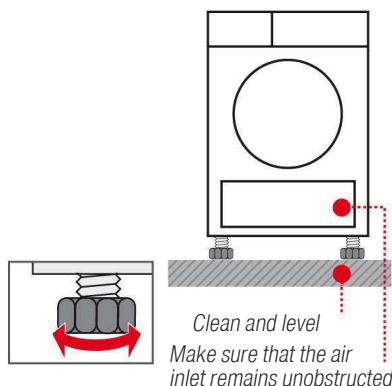
- Ensure that the appliance is installed on a clean, level and firm surface.
- The appliance plug must always be accessible.
- Do not obstruct the air inlet on the dryer.
- Keep the area around the dryer clean.
- Level the dryer using the threaded feet and a spirit level.
- Do not remove the threaded feet under any circumstances.



Do not set up the dryer behind a door or sliding door, as this may obstruct the dryer door or prevent it from opening. This will prevent children from locking themselves in, thereby putting their lives at risk.

*Take all accessory parts out of the drum.
The drum must be empty.*

You must ensure that the drain hose is connected when you operate the appliance. → separate Condensation drain instructions.



2.

For mains connection, see Safety instructions → page 13.

- Connect to an AC earthed socket. If in doubt have the socket checked by a specialist.
- The mains voltage and the voltage shown on the rating plate (→ page 4) must be the same. The connected load and necessary fuse protection are specified on the rating plate.

Frost protection / Transport



Preparation

1. Empty the condensation container → Page 4.
2. Select any programme using the programme selector.
3. Press the ►|| (Start/Pause) button → condensation water is pumped into the container.
4. Wait 5 minutes and then empty the condensation container again.
5. Switch the dryer off using the programme selector.
6. Transport the dryer in a vertical upright position.
7. Following transportation, do not use the dryer for two hours.

The dryer contains residual water.

This can flow out if the dryer is tilted.

The refresher tank must not contain any distilled water. If necessary, run the Steam/Refresh programme.



Care and cleaning



Dryer housing, control panel

Remove detergent residues immediately.
Wipe with a soft, damp cloth.
Do not clean with a water jet.
During drying, water may accumulate between the window and the seal.



Moisture sensor

The dryer is equipped with stainless steel moisture sensors.
Moisture sensors measure how damp the laundry is.
A thin layer of limescale may build up on the moisture sensors after prolonged use.
This must be removed regularly.

1. Open the door and clean the moisture sensors with a damp sponge that has a rough surface.



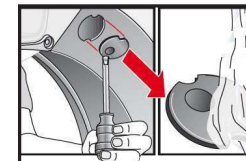
Do not use steel wool or abrasive materials.



Cover for steam nozzle in the drum (depending on the model)

After prolonged operation, limescale and fluff may accumulate on the cover of the steam nozzle. Clean regularly:

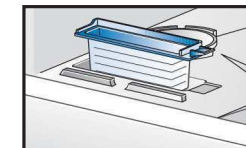
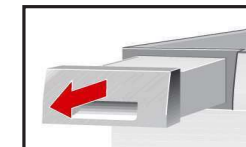
1. Open the door and remove the cover with a screwdriver. Clean the cover under running water.
2. Push and click the cover back in place.



Clean the filter in the refresher tank if it is dirty (depending on the model)

Regularly clean the filter under running water → This prevents stubborn deposits/dirt from building up.

1. Remove the condensation container.
2. Remove the filter and clean it under running water.
3. Re-insert the filter and push in the condensation container until it locks into place.



Care and cleaning



Heat exchanger

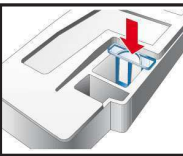
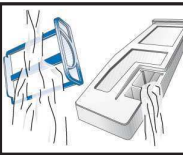
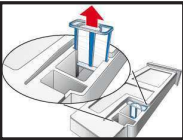
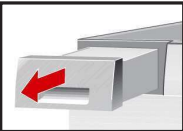
The dryer's heat exchanger is automatically cleaned during drying and **Heat exchanger is being rinsed** is displayed in the display panel. Do not pull out the condensation container during this cleaning process.



Filter in the condensation container

The filter is cleaned automatically when the condensation container is emptied. However, the filter should still be cleaned regularly under running water → This prevents stubborn deposits/dirt from building up. If the condensation drain is installed (*depending on the model*), it is not necessary to clean the filter → separate *Instructions for the condensation drain*.

- 1. Pull out the condensation container.
- 2. Pull the filter out of its snap-in lock.
- 3. Clean the filter under running water or in the dishwasher.
- 4. Refit the filter.
- 5. Push the condensation container back in until it locks into place.



Only operate the dryer with the filter inserted.

After-sales service

If you cannot rectify the fault yourself → instruction manual: *What to do if...* page 12, please contact our after-sales service. We will always find an appropriate solution and avoid unnecessary visits by engineers.

You can find the contact details for your nearest after-sales service on page 12 of the instruction manual or in the after-sales service directory.

Please give the after-sales service the product number (E no.) and the production number (FD) of the appliance.

E-Nr. _____ FD _____

Product number Production number

You can find this information:
inside the door* / in the opened service flap*
and on the rear of the appliance.
*depending on the model

Trust the expertise of the manufacturer. Contact us for assistance. In this way, you can rest assured that the repair will be carried out by trained service technicians using original spare parts.

Optional accessories (order from the after-sales service using the order number, depending on model)

WZ
11410

Washer-dryer stack connection set

The dryer can be placed on top of a suitable washing machine with the same width and depth to save space. The dryer **must be** fastened to the washing machine using this connection set. WZ 20400: with pull-out worktop.

WZ
20600

Wollens basket

For drying **individual** wollen fabrics, sports shoes and soft toys (see separate instructions for "Woollens basket").

WZ
20500

Platform

For easier loading and unloading. The basket contained in the drawer can be used to carry the laundry.

Technical data

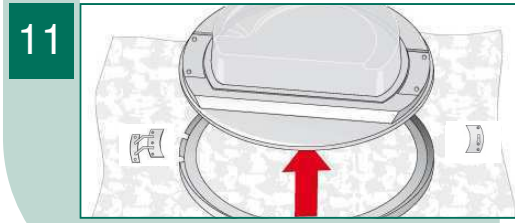
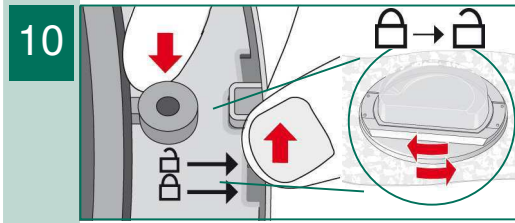
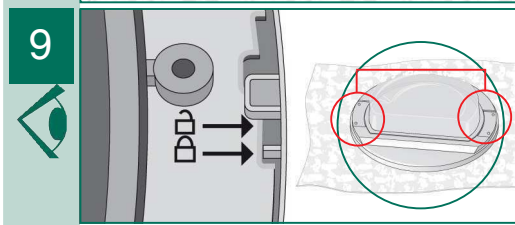
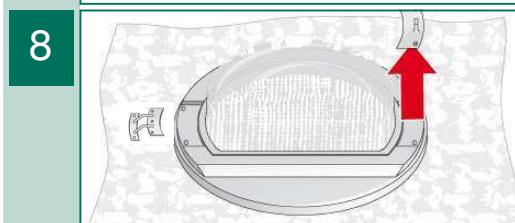
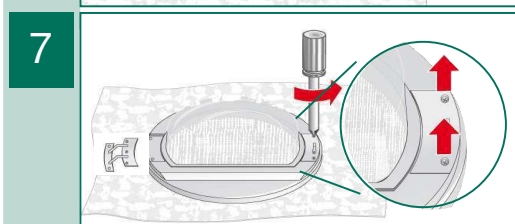
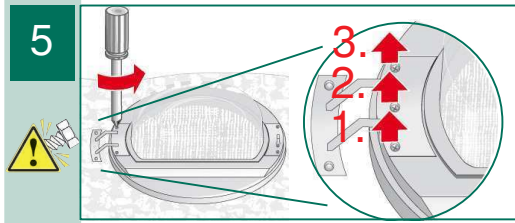
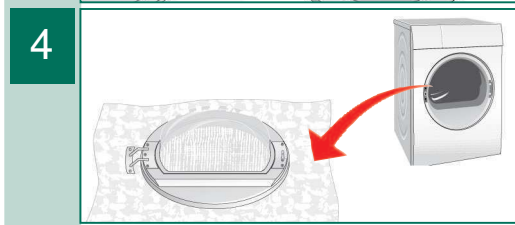
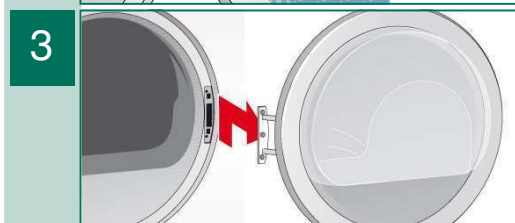
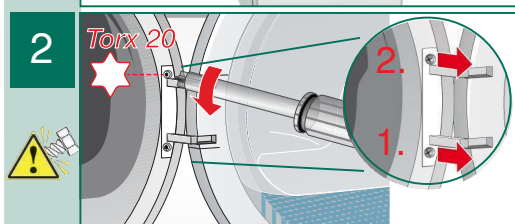
Dimensions (DxWxH)	60 x 60 x 85 cm (adjustable height)
Weight	approx. 57 kg
Max. capacity*	8 kg / 9 kg
Condensation container	4.6 l
Refresher tank	approx. 0.4 l
Connection voltage	220-240 V
Connected load	max. 1000 W (for models with a max. 1600 W steam function)
Fuse protection	10 A
Ambient temperature	5 - 35 °C
Product number	Inside of door
Production number	

The rating plate can be found on the back of the dryer.

*depending on the model → operating instructions: Programme overview, page 7

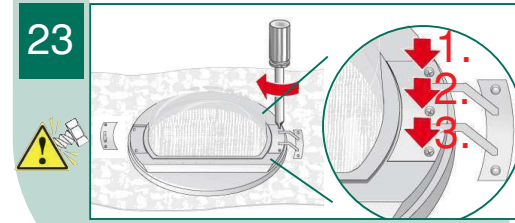
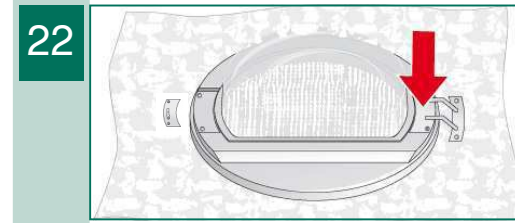
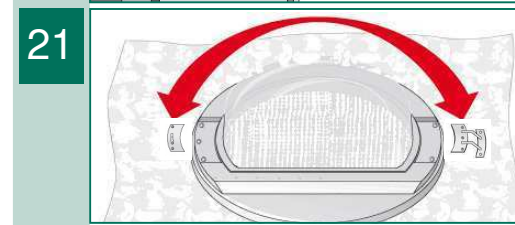
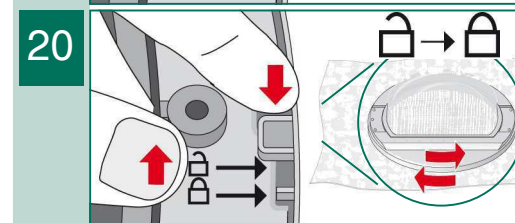
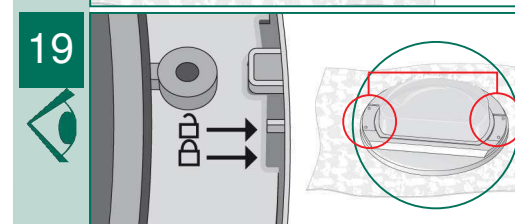
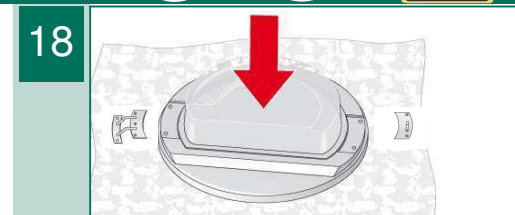
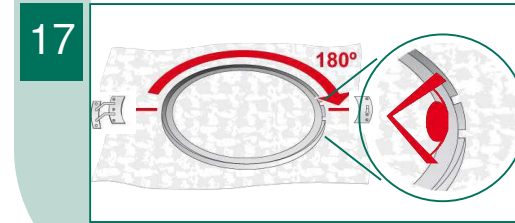
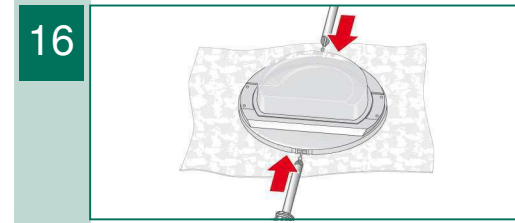
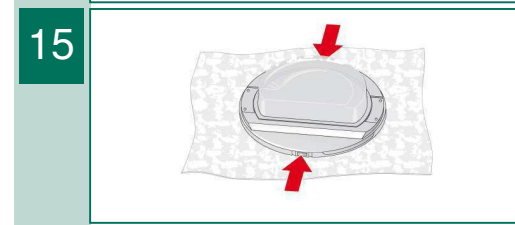
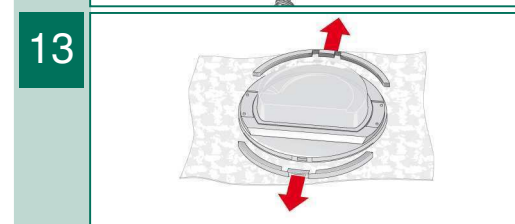
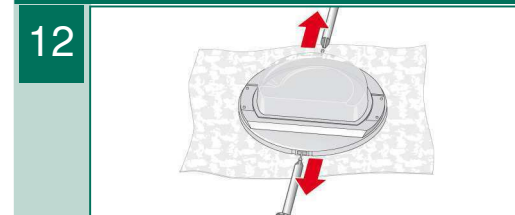
Reversing the door

Torx 20



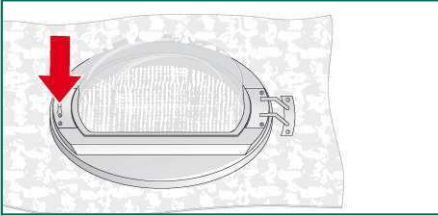
Reversing the door

Torx 20

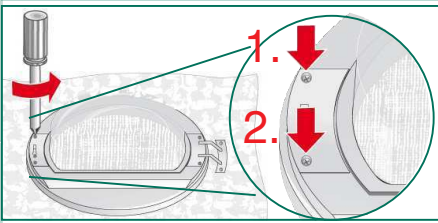


Reversing the door

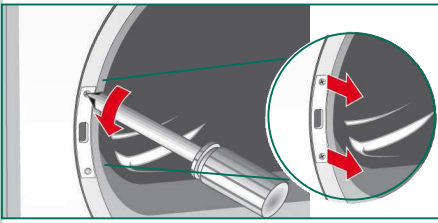
24



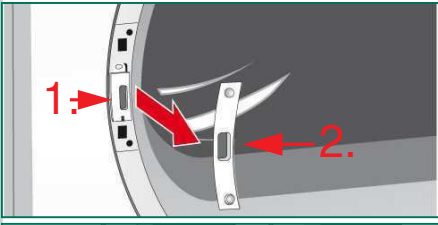
25



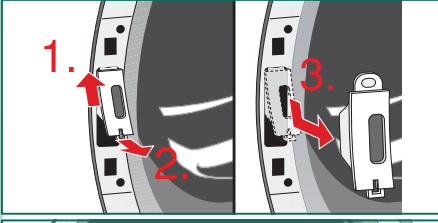
26



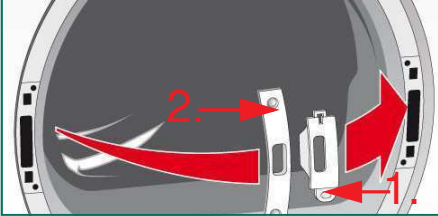
27



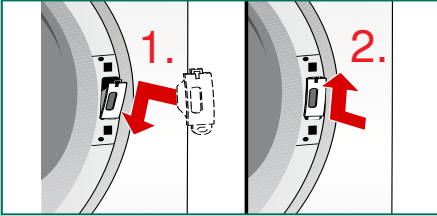
28



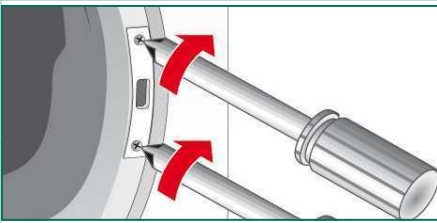
29



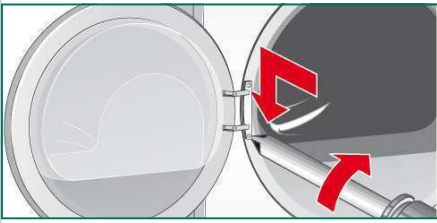
30



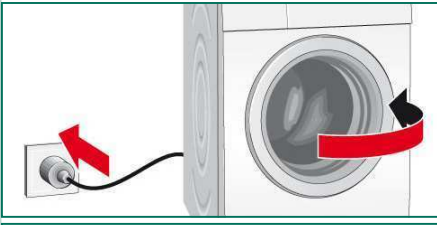
31



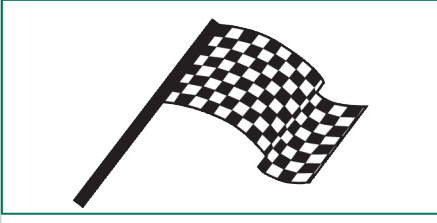
32



33



34



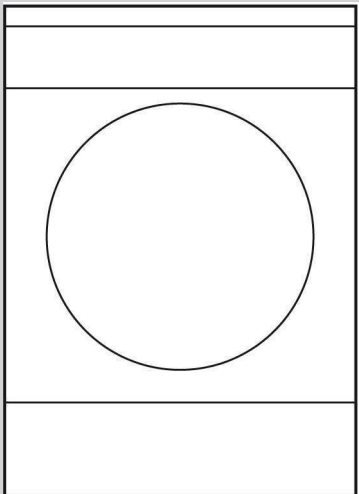
Torx 20








Dryer



Installation and maintenance instructions

en

Contents	Page
■ Environmentally-friendly disposal.....	1
■ Installation	1
■ Frost protection / Transport.	1
■ Care and cleaning.....	2/3
■ After-sales service	4
■ Optional accessories.....	4
■ Technical data.....	4
■ Reversing the door	5/7

 Read these instructions before operating the dryer.
You must also observe the separate instruction manual.
Keep all the documents in a safe place for future reference, or to pass on to the next owner.