



# *Quick Start* **GUIDE**

---

ENTERTAINER'S DISHWASHER DWHD771W\*



# PREPARE FOR THE FIRST LOAD OF DISHES

## ADJUSTING THE WATER SOFTENING SYSTEM

Ask your water company what the water hardness is or use the included water test strip.

Set your dishwasher to the correct setting.

To adjust the setting:

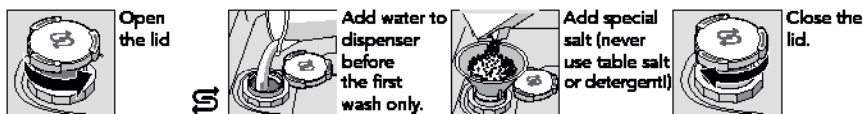
- Press the ON/OFF button.
- Press the Setup button for 3 seconds until H:0... is shown on the display window.
- Make the selection with setting buttons - +.
- Press and hold the Setup button for 3 seconds.

Water hardness value Clarke	Hardness range	mmol/l	Factory setting
0-8	soft	0-1.1	H:00
9-10	soft	1.2-1.4	H:01
11-12	medium	1.5-1.8	H:02
13-15	medium	1.9-2.1	H:03
16-20	medium	2.2-2.9	H:04
21-26	hard	3.0-3.7	H:05
27-38	hard	3.8-5.4	H:06
39-62	hard	5.5-8.9	H:07

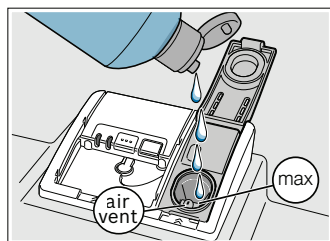


## ADD SALT TO WATER SOFTENER

Dissolves limescale and creates optimal washing results.



## ADD RINSE AID



This dishwasher is designed to be used with rinse aid, which enhances drying results.

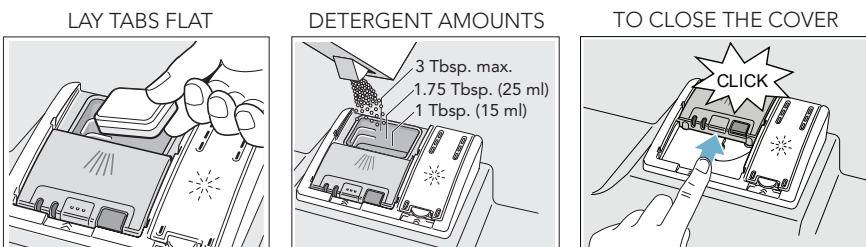
- Add rinse aid before first use and when the Add Rinse Aid indicator light on the control panel illuminates.
- Lift tab to open the rinse aid reservoir and add liquid rinse aid into the oval until it is full, avoiding air vent. Wipe up any excess rinse aid that may puddle.

Tip: Remove lid of rinse aid bottle for easier pouring.

## ADD DETERGENT

Use detergent tabs, fresh powdered detergent or liquid detergent. For the Glass cycle, use 1-1.75 Tbsp. of detergent or use detergent tabs with glassware protection.

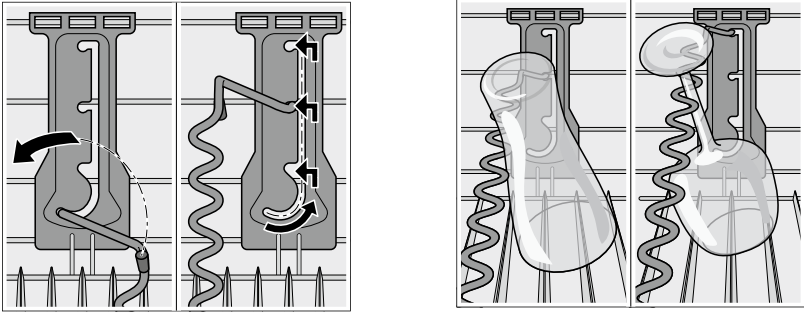
Tip: dispenser lid should slide closed easily.



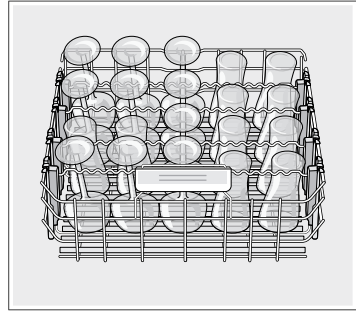
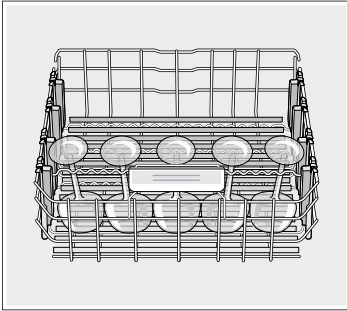
# LOADING THE ENTERTAINER'S DISHWASHER

## LOWER RACK

Special glassware supports and a rubberized mat keep your glasses secure. Set the glassware supports by sliding the supports out and up to the desired level until it clicks. Choose the level that provides the most stability for your glassware while tilted at an angle. Stemware should rest in a groove.

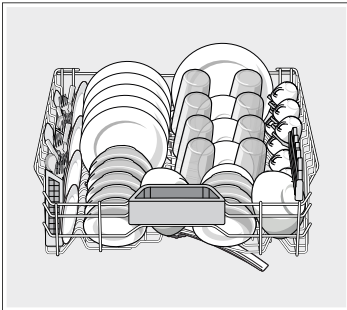


For best results, load the front row first. Unload the last row first.



## UPPER RACK

Suggested loading pattern for the upper rack.



ALWAYS READ YOUR USE AND CARE  
MANUAL FOR DETAILED INSTRUCTIONS  
AND IMPORTANT SAFETY NOTICES.

# START YOUR DISHWASHER

1. Press the On/Off button.
2. Select a cycle and option if desired.
3. Press Start.

## CYCLE DESCRIPTIONS

**Auto:** Smartest cycle, with most flexible soil sensing, which is ideal for mixed dishware and food soils.

**Normal:** Recommended for daily, regular or typical use to completely wash a full load of normally soiled dishes.

**Glass:** Best for stemware, glasses and other delicate dishware, this cycle cleans at a lower temperature to protect dishes.

**StarSpeed:** A full hot water cycle in 20 minutes - the fastest in the industry. Innovative water-preheating allows you to wash multiple loads, back to back to complete your washing needs in record time. Not recommended for delicate items. Use liquid or powder detergent.

**1 Hour:** Cleans freshly soiled dishes with easy to remove soils. This cycle reduces cycle time while still including drying.

**Quick:** Cleans lightly soiled dishes and reduces overall wash time to 30 minutes.

**Rinse:** A quick rinse until you are ready to run a full cycle.

## TIPS FOR THE BEST GLASSWARE RESULTS

1. Select the **Glass** cycle (also the default cycle).
2. Use detergent tabs with glassware protection.
3. Select the **Extra Shine** option.



FOR MORE DETAILED TIPS, SAFETY INFORMATION AND TROUBLESHOOTING,  
SEE YOUR USE AND CARE MANUAL.