



SIEMENS



Washing machine

WM..N...

siemens-home.bsh-group.com/welcome

en Instruction Manual and Installation Instructions

Register
your
product
online

Your new washing machine

You have chosen a Siemens washing machine.

Please take a few minutes to read and become familiar with the advantages of your washing machine.

To meet the high quality demands required by Siemens, every washing machine that leaves our factory is carefully checked to ensure that it functions correctly and is in perfect condition.

For more information on our products, accessories, replacement parts and services, see our website www.siemens-home.bsh-group.com or contact our after-sales service centres.

If the operating and installation instructions describe different models, any differences will be pointed out at the relevant points in the text.



Read these operating and installation instructions before switching on the washing machine.

Display rules

Warning!

This combination of symbol and signal word indicates a possibly dangerous situation. Not heeding the warning can cause death or injuries.

Caution!

This signal word indicates a possibly dangerous situation. Not heeding the caution can cause property and/or environmental damage.

Note/tip

Information about the optimum use of the appliance/any other useful information.

1. 2. 3. / a) b) c)

The steps are represented by numbers or letters.

■ / -

Lists are represented by a small box or a dash.

Contents

| | | | |
|--|----|--|----|
|  Intended use | 4 |  Detergent | 23 |
|  Safety instructions | 5 | Correct selection of detergent | 23 |
| Children/people/pets | 5 | Saving energy and detergent | 24 |
| Installation | 6 |  Programme default settings | 24 |
| Operation | 8 | Spin speed | 24 |
| Cleaning/Maintenance | 10 | Ready in | 25 |
|  Environmental protection | 11 |  Additional programme settings | 25 |
| Packaging/used appliance | 11 | speed eco | 25 |
| Tips on economical use | 11 |  Operating the appliance | 26 |
|  Positioning and connecting | 11 | Preparing the washing machine | 26 |
| Included with the appliance | 11 | Switching on the appliance/selecting a programme | 26 |
| Safety instructions | 12 | Changing the programme default settings | 26 |
| Installation surface | 13 | Selecting additional programme settings | 26 |
| Installation on a base or a wooden joist floor | 13 | Placing laundry into the drum | 27 |
| Installation on a platform with drawer | 13 | Measuring and adding detergent and care products | 27 |
| Installing the appliance in a kitchenette | 13 | Starting the programme | 28 |
| Removing the transport locks | 14 | Childproof lock | 28 |
| Hose and cable lengths | 14 | Adding/removing laundry | 29 |
| Water inlet | 15 | Changing the programme | 29 |
| Water outlet | 16 | Cancelling the programme | 29 |
| Levelling | 16 | Programme end during Rinse Stop | 29 |
| Electrical connection | 17 | Programme end | 30 |
| Before washing for the first time | 17 | Removing laundry/switching off the appliance | 30 |
| Transportation | 18 |  Sensors | 30 |
|  Getting to know the appliance 19 | | Automatic load sensing | 30 |
| Washing machine | 19 | Unbalanced load detection system | 30 |
| Control panel | 20 |  Appliance settings | 31 |
| Display panel | 20 |  Cleaning and maintenance | 31 |
|  Laundry | 21 | Machine housing/control panel | 32 |
| Preparing the laundry | 21 | Drum | 32 |
| Sorting laundry | 22 | Descaling | 32 |
| Starching | 22 | | |
| Dyeing/bleaching | 23 | | |
| Soaking | 23 | | |

Detergent drawer and housing 32
Drain pump is blocked 33
Drain hose at the siphon is blocked 34
Filter in the water supply is blocked 34

 **Faults and what to do about them 34**

Emergency release 34
Information on the display panel . . . 36
Faults and what to do about them . . 36

 **After-sales service 38**

 **Technical data 39**

 **Aqua-Stop warranty 39**

 **Intended use**

- This appliance is intended for private domestic use only.
- Do not install or operate this appliance anywhere that is liable to experience frost and/or outdoor conditions. There is a risk that the appliance will be damaged if residual water in it freezes. If hoses freeze up, they may crack/burst.
- This appliance must only be used for washing domestic laundry, consisting of machine-washable items and hand-washable woollens (see label on item). Using the appliance for any other purpose is outside of the scope of its intended application and is forbidden.
- This appliance is suitable for operation with mains water and commercially available detergents and care products (must be suitable for use in washing machines).
- This appliance is intended for use up to a maximum height of 4000 metres above sea level.

Before you switch on the appliance:

Check that there is no visible damage to the appliance. Do not operate the appliance if it is damaged. Should you have any problems, please contact your specialist dealer or our customer service.

Read and follow the operating and installation instructions and all other information provided with this appliance.

Retain the documents for subsequent use or for subsequent owners.

Safety instructions

The following safety information and warnings are provided to protect you from injury and to prevent material damage to your surroundings.

It is nevertheless important to take the necessary precautions and to proceed with care when installing, maintaining, cleaning and operating the appliance.

Children/people/pets

Warning **Risk of death!**

Children and other people who are unable to assess the risks involved when using the appliance may injure themselves or may find themselves in life-threatening situations. Therefore please note:

- The appliance may be used by children over the age of 8 years and by persons with reduced physical, sensory or mental capacity or by persons with a lack of experience or knowledge as long as they are supervised or have received instruction on how to use the appliance safely and they have understood the potential risks of using the appliance.
- Children must not play with this appliance.

- Do not allow children to clean or maintain this appliance unsupervised.
- Keep children under 3 years and pets away from this appliance.
- Do not leave the appliance unattended when children or other people who are unable to assess the risks are in the vicinity.

Warning **Risk of death!**

Children may lock themselves inside appliances and find themselves in a life-threatening situation.

- Do not position the appliance behind a door, as this may obstruct the appliance door or prevent it from opening completely.
- Once an appliance has reached the end of its life, pull the mains plug from the socket **before** severing the mains cable, and then destroy the lock on the appliance door.

Warning **Risk of suffocation!**

If allowed to play with the packaging/plastic film or packing components, children may become caught in these or pull them over their heads and suffocate.

Keep packaging, plastic film and packing components away from children.

⚠ Warning
Risk of poisoning!

Detergents and care products may result in poisoning if consumed.

If accidentally swallowed, seek medical advice. Keep detergents and care products out of the reach of children.

⚠ Warning
Risk of burns!

When washing at high temperatures, the glass in the appliance door becomes hot. Stop children from touching the appliance door when it is hot.

⚠ Warning
Eye/skin irritation!

Contact with detergents or care products may cause eye/skin irritation.

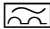
Rinse eyes/skin thoroughly if they/it come(s) into contact with detergents or care products. Keep detergents and care products out of the reach of children.

Installation

⚠ Warning
**Risk of electric shock/fire/
material damage/damage to
the appliance!**

If the appliance is not installed properly, this may lead to a

dangerous situation. Make sure that:

- The mains voltage on your power socket matches the rated voltage specified on the appliance (identification plate). The connected loads and the required fuse protection are specified on the identification plate.
- The appliance is only connected to a source of alternating current via a nationally recognized and grounded outlet that has been correctly installed.
- The mains plug and the grounded socket match and the earthing system has been correctly installed.
- The cross section of the cable is sufficiently large enough.
- The mains plug is accessible at all times.
- If using a residual current circuit breaker, only use one that bears the following mark: . The presence of this mark is the only way to be sure that it fulfils all the applicable regulations.

⚠ Warning
**Risk of electric shock/fire/
material damage/damage to
the appliance!**

If the appliance's mains cable is altered or damaged, this may result in electric shock, short

circuiting or fire due to overheating.

The mains cable must not be kinked, crushed or altered, and must not come into contact with any heat sources.

⚠ Warning

Risk of fire/material damage/damage to the appliance!

The use of extension cords or power strips may result in fire due to overheating or short circuiting.

Connect the appliance directly to an earthed socket that has been correctly installed. Do not use extension cords, power strips or multi-way couplers.

⚠ Warning

Risk of injury/material damage/damage to the appliance!

- The appliance may vibrate or move when in operation, potentially resulting in injury or material damage. Place the appliance on a clean, even, solid surface and, using a spirit level to guide you, level it with the screw-in feet.

- If you take hold of any of the appliance's protruding parts (e.g. the appliance door) in order to lift or move it, these parts may break off and cause injury. Do not take hold of any of the appliance's protruding parts in order to move the appliance.

⚠ Warning

Risk of injury!

- The appliance is very heavy. Lifting it may result in injury. Do not lift the appliance on your own.
- The appliance has sharp edges on which you could cut your hands. Do not take hold of the appliance by its sharp edges. Wear protective gloves to lift it.
- If the hoses and mains cables are not correctly routed, they may constitute a tripping hazard, which may result in injury. Route hoses and cables such that they do not constitute a tripping hazard.

Caution!

Material damage/damage to the appliance

- If the water pressure is too high or too low, the appliance may not be able to operate properly, and it may also result in material damage or damage to the appliance.
Make sure that the water pressure in the water supply facility is at least 100 kPa (1 bar), and does not exceed 1000 kPa (10 bar).
- If the water hoses are altered or damaged, this may result in material damage or damage to the appliance. The water hoses must not be kinked, crushed, altered or severed.
- The use of hoses supplied by other brands to connect to the water supply may result in material damage or damage to the appliance. Use the hoses supplied with the appliance or genuine spare part hoses only.

- The appliance is secured for transportation by transport locking devices. If the transport locking devices are not removed before the appliance is operated, this may result in damage to the appliance.
It is important to completely remove all transport locking devices before using the appliance for the first time. Make sure that you retain these transport locking devices separately. It is important to refit the transport locking devices if the appliance is to be transported, in order to prevent the appliance from being damaged in transit.

Operation

Warning **Risk of explosions/fire!**

Laundry that has been pretreated with cleaning agents that contain solvents, e.g. stain remover/cleaning solvent, may cause an explosion in the drum. Rinse the laundry thoroughly with water before washing it in the machine.

Warning **Risk of poisoning!**

Poisonous fumes may be given off by cleaning agents that contain solvents, e.g. cleaning solvent.

Do not use cleaning agents that contain solvents.

⚠ Warning
Risk of injury!

- If you support your weight/sit on the appliance door when it is open, the appliance may tip over, which may result in injury.
Do not support your weight on the appliance door when it is open.
- If you climb onto the appliance, the worktop may break, which may result in injury.
Do not climb onto the appliance.
- If you reach into the drum while it is still rotating, you risk injuring your hands.
Wait until the drum has stopped rotating.

⚠ Warning
Risk of scalding!

When washing at high temperatures, there is a risk of scalding if you come into contact with hot detergent solution (e.g. when draining hot detergent solution into a washbasin).
Do not reach into the hot detergent solution.

⚠ Warning
Eye/skin irritation!

Detergent and care products may spray out if the detergent

drawer is opened while the appliance is in operation. Rinse eyes/skin thoroughly if they/it come(s) into contact with detergents or care products. If accidentally swallowed, seek medical advice.

Caution!
Material damage/damage to the appliance

- If the amount of laundry in the appliance exceeds its maximum load capacity, it may not be able to operate properly, or this may result in material damage or damage to the appliance.
Do not exceed the maximum load capacity of dry laundry. Make sure you comply with the maximum load capacities specified for each of the programs → Supplementary sheet for the operating and installation instructions.
- If you pour the wrong quantity of detergent or cleaning agent into the appliance, this may result in material damage or damage to the appliance.
Use detergents/care products/cleaning agents and softeners in accordance with the manufacturers' instructions.

Cleaning/Maintenance

Warning

Risk of death!

The appliance is powered by electricity. There is a risk of electric shock if you come into contact with live components. Therefore please note:

- Switch off the appliance. Disconnect the appliance from the power supply (pull out the plug).
- Never take hold of the mains plug with wet hands.
- When removing the mains plug from the socket, always take hold of the plug itself and never the mains cable, otherwise this may damage the mains cable.
- Do not make any technical modifications to the appliance or its features.
- Repairs and any other work on the appliance must only be conducted by our customer service or by an electrician. The same applies for replacing the mains cable (when necessary).
- Spare mains cables can be ordered from our customer service.

Warning

Risk of poisoning!

Poisonous fumes may be given off by cleaning agents that contain solvents, e.g. cleaning solvent.

Do not use cleaning agents that contain solvents.

Warning

Risk of electric shock/material damage/damage to the appliance!

If moisture penetrates the appliance, this may cause it to short circuit.

Do not use a pressure washer, steam cleaner, hose or spray gun to clean your appliance.

Warning

Risk of injury/material damage/damage to the appliance!

The use of spare parts and accessories supplied by other brands is dangerous and may result in injury, material damage or damage to the appliance.

For safety reasons, use genuine spare parts and accessories only.

Caution!

Material damage/damage to the appliance

Cleaning agents and agents for pretreating laundry (e.g. stain removers, prewash sprays, etc.) may cause damage if they come into contact with the surfaces of the appliance.

Therefore please note:

- Do not allow these agents to come into contact with the surfaces of the appliance.

- Clean the appliance with nothing but water and a soft, damp cloth.
- Remove any detergent, spray or other residues immediately.



Environmental protection

Packaging/used appliance



Dispose of packaging in an environmentally-responsible manner.

This appliance is labelled in accordance with European Directive 2012/19/EU concerning used electrical and electronic appliances (Waste Electrical and Electronic Equipment - WEEE).

This directive specifies the framework for the return and recycling of used appliances as applicable throughout the EU.

Tips on economical use

- For optimum energy and water savings, fill the appliance with the maximum amount of laundry for each programme.
Overview of programmes
→ Supplementary sheet for the operating and installation instructions.
- Wash normally soiled laundry without a prewash.
- Save energy and detergent when washing lightly and normally soiled laundry.
→ *"Detergent"* on page 23

- The temperatures which can be selected refer to the care labels on the textiles. The temperatures used in the machine may deviate from this to ensure you get the optimum combination of energy-saving and washing results.
- In order to save energy, the appliance switches to energy saving mode. The display panel lighting goes out after a few minutes and the ▷ button flashes.
→ *"Display panel"* on page 20
- If the laundry is subsequently dried in a tumble dryer, select the spin speed according to the tumble dryer manufacturer's instructions.



Positioning and connecting

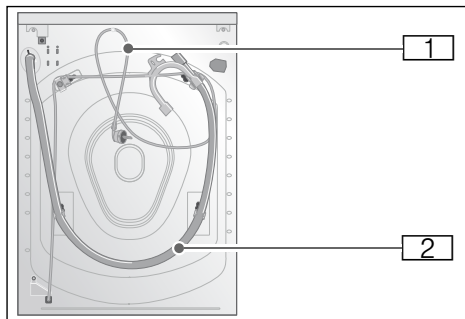
Included with the appliance

Notes

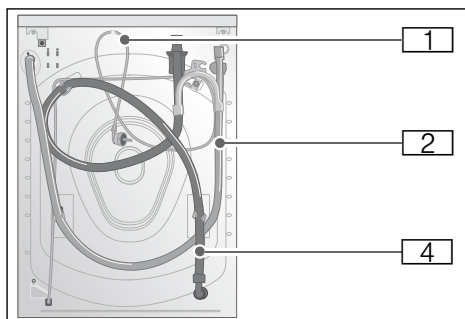
- Check the machine for transport damage. Never use a damaged machine. If you have any complaints, contact the dealer from whom you purchased the appliance or our after-sales service.
- Moisture inside the drum is due to final testing.

The content of the drum and the hoses delivered with the appliance vary depending on the model.

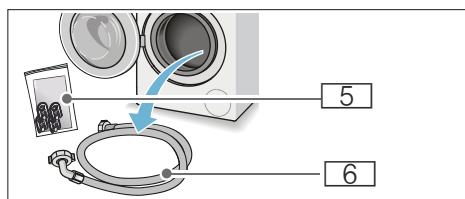
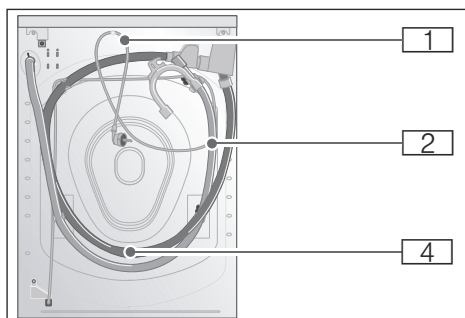
■ **Standard**



■ **Aqua-Secure**



■ **Aqua-Stop**



- 1 Mains cable
 - 2 Water drain hose with elbow
 - 3 Water supply hose on Aqua-Secure model
 - 4 Water supply hose on Aqua-Stop model
 - 5 Bag:
 - Operating and installation instructions + supplementary sheet for the operating and installation instructions
 - After-sales service location directory*
 - Warranty*
 - Cover caps for openings after the transport locks have been removed
 - Measuring aid* for liquid detergent
 - Adapter with sealing washer from 21 mm = 1/2" to 26.4 mm = 3/4" *
 - 6 Water supply hose on standard model
- * depending on the model

In addition, a hose clamp (24 - 40 mm diameter, available from specialist retailers) is required to connect the water drain hose to a siphon.

Useful tools

- Spirit level for aligning
- Spanner with:
 - WAF13 for loosening the transport braces, and
 - WAF17 for aligning the appliance feet

Safety instructions

⚠ Warning
Risk of injury!

- The washing machine is very heavy. Be careful when lifting/transporting the washing machine; wear protective gloves.

- If the washing machine is lifted by its protruding parts (e.g. the washing machine door), the components may break off and cause injuries. Do not lift the washing machine by protruding parts.
- If the hose and mains cables are not routed properly, there is a risk of tripping and injury. Route hoses and cables in such a way that there is no risk of tripping.

Caution!**Damage to the appliance**

Frozen hoses may rip/burst. Do not install the washing machine in areas exposed to frost or outdoors.

Caution!**Water damage**

The connection points for the water supply hose and water drain hose are under high water pressure. To prevent leaks and water damage, you must follow the instructions in this section.

Notes

- In addition to the safety information listed here, the local water and electricity supplier may have special requirements.
- If in doubt, have the appliance connected by a specialist.

Installation surface

Note: The washing machine must be aligned in a stable manner so that it does not move around.

- The installation surface must be firm and level.
- Soft floors/floor coverings are not suitable.

Installation on a base or a wooden joist floor**Caution!****Damage to the appliance**

The washing machine may "wander" and tip/topple from the base when spinning.

The feet of the appliance must be secured with holding brackets. Order no. WMZ 2200, WX 975600, Z 7080X0

Note: On wooden joist floors, install the washing machine:

- In a corner, if possible,
- On a water-resistant wooden board (min. 30 mm thick) which is screwed tightly to the floor.

Installation on a platform with drawer

Platform order no.: WMZ 20490, WZ 20490, WZ 20520

Installing the appliance in a kitchenette

 **Warning**
Risk of death!

There is a risk of electric shock if you touch live components. Do not remove the appliance covering plate.

Notes

- Recess width of 60 cm required.
- Only install the washing machine underneath a continuous worktop that is securely connected to adjacent cabinets.

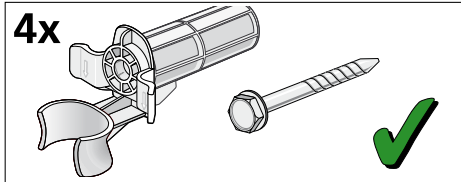
Removing the transport locks

Caution!

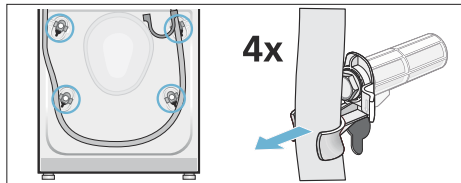
Damage to the appliance

- The machine is secured for transportation using transport locks. If the transport locks are not removed, the machine may become damaged when it is operated. Before using the appliance for the first time, make sure that you completely remove all four transport locks. Keep the locks in a safe place.
- To prevent transport damage from occurring if the appliance is moved at a later date, you must refit the transport locks before transporting the appliance.

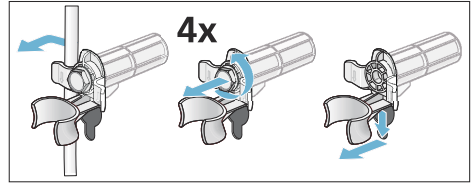
Note: Keep the screws and sleeves screwed together in a safe place.



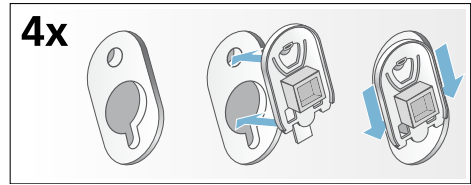
1. Take the hoses out of the holders.



2. Remove the mains cable from the holders. Unscrew and remove all four transport lock screws. Remove the sleeves.

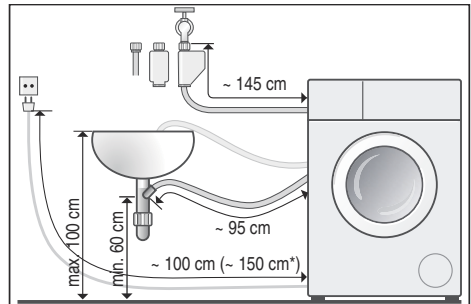


3. Fit the covers. Lock the covers firmly in place by applying pressure to the snap-in hooks.

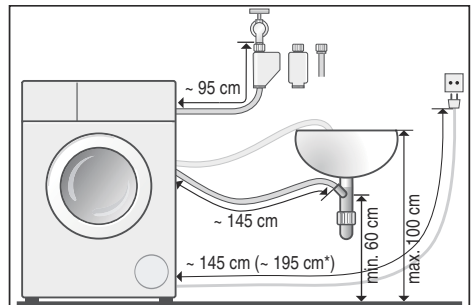


Hose and cable lengths

- Left-hand connection



- Right-hand connection



* depending on the model

Tip: The following are available from specialist retailers/our after-sales service:

- Extension for Aqua-Stop and cold water supply hose (approx. 2.50 m); order no. WMZ 2380, WZ 10130, Z 7070X0
- A longer supply hose (approx. 2.20 m) for standard models; individual component number for the after-sales service: 00353925

Water inlet



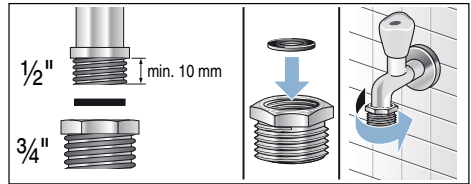
Warning **Risk of electric shock!**

The Aqua-Stop contains an electric valve. There is a risk of electric shock if you immerse the Aqua-Stop safety valve in water. Do not immerse the safety valve in water.

Notes

- Only operate the washing machine using cold mains water.
- Do not connect the machine to the mixer tap of an unpressurised hot-water boiler.
- Do not use a used supply hose. Only use the supply hose supplied or one that was purchased from an authorised specialist retailer.
- Do not kink or squash the water supply hose.
- Do not alter (shorten, cut through) the water supply hose (otherwise, its strength is no longer guaranteed).
- Only tighten the screw connections by hand. If the screw connections are tightened too much with a tool (pliers), the thread may become damaged.
- When connecting to a 21 mm = 1/2" tap, first fit an adapter* with a sealing washer from 21 mm = 1/2" to 26.4 mm = 3/4".

* supplied depending on the model



Optimum water pressure in the supply network

At least 100 kPa (1 bar)

Maximum 1000 kPa (10 bar)

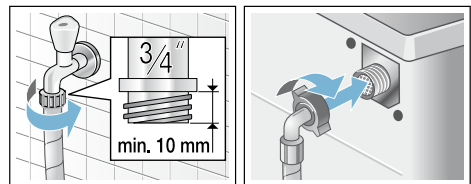
When the tap is open, the water flow is at least 8 l/min.

If the water pressure is higher than this, a pressure-reducing valve must be installed.

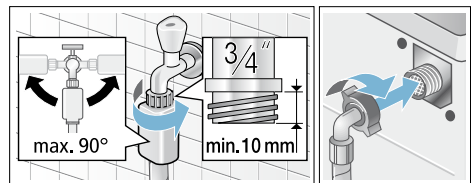
Connection

Connect the water supply hose to the water tap (3/4" = 26.4 mm) and to the appliance (not necessary for Aqua-Stop models as this is permanently installed):

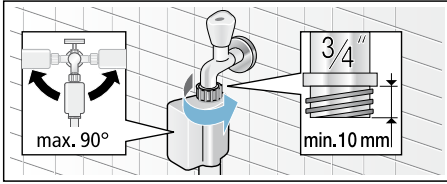
- Model: **Standard**



- Model: **Aqua-Secure**



■ Model: **Aqua-Stop**



Note: Open the water tap carefully, checking the leak tightness of the connection points. The screw connection is under mains water pressure.

Water outlet

Caution! Water damage

If the drain hose slips out of the washbasin or the connection point during draining due to high water pressure, any escaping water may cause water damage. Secure the drain hose so that it cannot slip out.

Notes

- Do not kink the water drain hose or put strain on it lengthways.
- Height difference between the installation surface and the drain: min. 60 cm, max. 100 cm

You can lay the water drain hose as follows:

■ **Outlet in a sink**

⚠ Warning
Risk of scalding!

When you are washing at high temperatures, there is a risk of scalding if you come into contact with hot water (e.g. when draining hot water into a washbasin). Do not reach into the hot water.

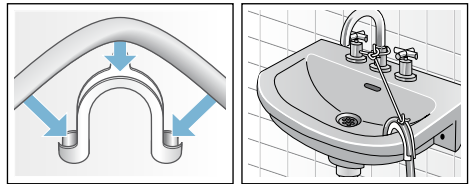
Caution!

Damage to the appliance/fabrics

If the end of the drain hose is immersed in the drained water, water may be sucked back into the appliance and may damage the appliance/fabrics.

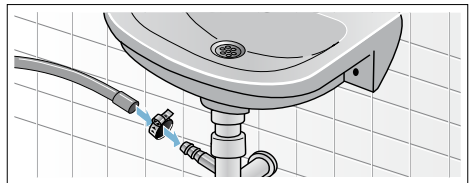
Make sure that:

- The plug does not prevent drainage from the sink.
- The end of the drain hose is not immersed in the drained water.
- The water drains away quickly enough.



■ **Drainage into a siphon**

The connection point must be secured using a hose clamp with a diameter of 24-40 mm (available from specialist retailers).



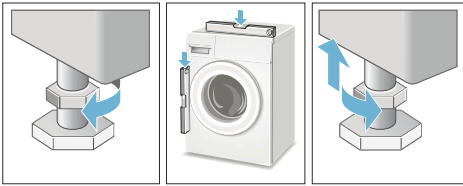
Levelling

Level the appliance using a spirit level. Incorrect levelling may result in intense noise, vibrations and "wandering".

1. Loosen the lock nuts using a wrench, by turning it in a clockwise direction.
2. Check the alignment of the washing machine with a spirit level, and adjust it if necessary. Change the height by turning the appliance feet.

All four appliance feet must stand firmly on the ground.

3. Tighten the lock nut against the housing.
In doing so, hold the foot tight and do not adjust its height.
The lock nuts on all four appliance feet must be screwed tightly against the housing.



Electrical connection

⚠ Warning **Risk of death!**

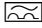
There is a risk of electric shock if you touch live components.

- Never touch or hold the mains plug with wet hands.
- Only pull out the mains cable by the plug and never by the cable, as this could damage it.
- Never unplug the mains plug during operation.

Observe the following information and ensure that:

Notes

- The mains voltage and voltage indicated on the washing machine (rating plate) are the same.
The connected load and fuse required are specified on the rating plate.
- The washing machine is only connected to an alternating current supply via a properly installed earthed socket.
- The mains plug fits the socket.
- The cable cross-section is adequate.
- The earthing system is properly installed.

- The mains cable is only replaced by a qualified electrician (if this is necessary). Replacement mains cables are available from the after-sales service.
- No multiple plugs/couplings or extension cables are used.
- If an earth-leakage circuit breaker is used, only a type which displays the  symbol is used.
Only this symbol guarantees compliance with the currently applicable regulations.
- The mains plug can be accessed at all times.
- The mains cable is not kinked, squashed, altered or cut through.
- The mains cable does not come into contact with heat sources.

Before washing for the first time

The washing machine was thoroughly tested before leaving the factory. To remove any residues from the product and to remove water that may be left over from the test, run the first wash cycle **without** any laundry.

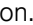
Note: The washing machine **must be correctly installed and connected.**

→ Page 11

1. Check the appliance.
Note: Never use a damaged machine. Inform after-sales service.
2. Remove the protective foil from the worktop and the control panel.
3. Connect the mains plug.
4. Turn on the water tap.
5. Do not load any laundry. Close the door.
6. Run the **Cottons 90 °C** programme.
7. Open the detergent drawer.
8. Pour approximately 1 litre of water into compartment **II**.
9. Pour standard detergent into compartment **II**.

en Positioning and connecting

Note: To prevent foaming, only use half the amount of detergent recommended by the detergent manufacturer. Do not use detergents designed for wool or delicates.

10. Close the detergent drawer.
11. Press the  button.
12. When the programme ends, switch off the appliance.

Your washing machine is now ready to use.

Transportation

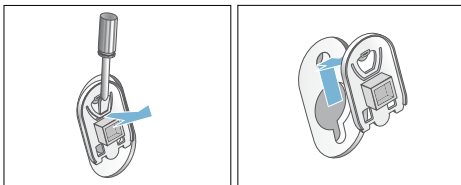
e.g. when moving home

Preparatory work:

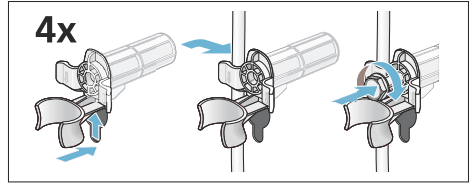
1. Turn off the water tap.
2. Reduce the water pressure in the supply hose.
→ *"Filter in the water supply is blocked" on page 34*
3. Drain the remaining detergent solution.
→ *"Drain pump is blocked" on page 33*
4. Disconnect the washing machine from the mains.
5. Remove the hoses.

Installing the transport locks:

1. Remove the covers and keep them in a safe place.
Use a screwdriver if necessary.



2. Insert all four sleeves. Clip the mains cable securely in the holders. Insert and tighten the screws.



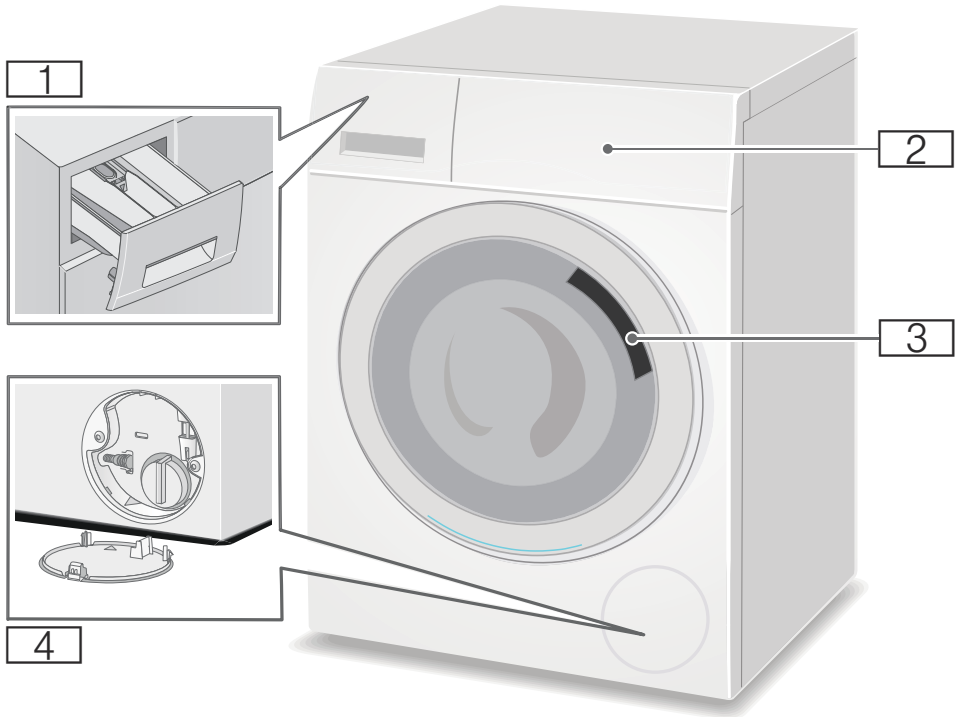
Before switching on the appliance again:

Notes

- The transport locks **must** be removed.
→ *"Removing the transport locks" on page 14*
- To prevent unused detergent from flowing straight into the drain during the next wash: Pour approx. 1 litre of water into compartment **II** and start the **Drain/Empty** programme.

Getting to know the appliance

Washing machine

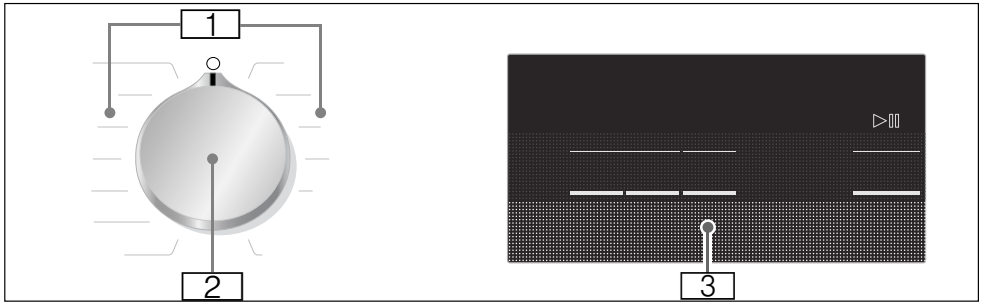


- 1** Detergent drawer
- 2** Operating/display panel
- 3** Loading door with door handle
- 4** Service flap

en Getting to know the appliance

Control panel

Control panel differs depending on the model

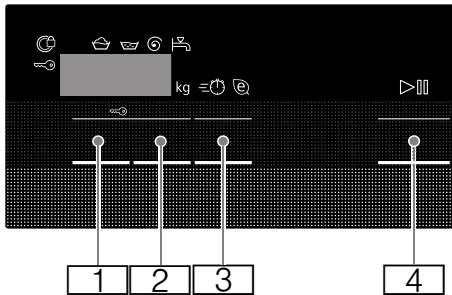


1 Programmes → Supplementary sheet for the operating and installation instructions.

2 Programme selector
3 Display panel for settings and information

Display panel

Note: The tables show possible setting options and information in the display panel; these differ depending on the model.



| Button | Display indicator | Description |
|--|-----------------------|--|
| 1 | | Selectable Spin speed |
| | - - - 0 - 1400** Ⓢ | In rpm; 0 = no spin cycle, draining only; - - - = Rinse Stop |
| 2 | | Ready in |
| | e.g. 2:30 | Programme duration depends on the programme selection in h:min (hours:minutes) |
| | 1-24 h | End of programme ("Ready in" time) after ...h (hours) |
| * depending on the model | | |
| ** depending on the selected programme, settings and model | | |

| Button | Display indicator | Description |
|--|-------------------|--|
| | | Additional programme settings: → <i>Page 25</i> |
| | | speed eco |
| | | Button for starting a programme, interrupting a programme, e.g. to add items of laundry, and cancelling a programme |
| * depending on the model | | |
| ** depending on the selected programme, settings and model | | |

More information on the display panel

| Display indicator | Description |
|--|--|
| ** kg | Load recommendation |
| | Programme progress: |
| | Washing |
| | Rinse |
| | Spin |
| | Programme end |
| | Programme end during Rinse Stop |
| | Washing machine door → <i>"Adding/removing laundry" on page 29</i> → <i>"Faults and what to do about them" on page 34</i> |
| | Tap → <i>"Faults and what to do about them" on page 34</i> |
| * depending on the model | |
| ** depending on the selected programme, settings and model | |

| Display indicator | Description |
|--|---|
| | Childproof lock → <i>"Childproof lock" on page 28</i> → <i>"Faults and what to do about them" on page 34</i> |
| | Fault display → <i>"Information on the display panel" on page 36</i> |
| | Signal setting → <i>"Appliance settings" on page 31</i> |
| * depending on the model | |
| ** depending on the selected programme, settings and model | |

Note: Energy saving mode

In order to save energy, the appliance switches to energy saving mode. The display lighting goes out after a few minutes and the button flashes. To activate the lighting, press any button. The energy saving mode is not activated if a programme is running.

Laundry

Preparing the laundry

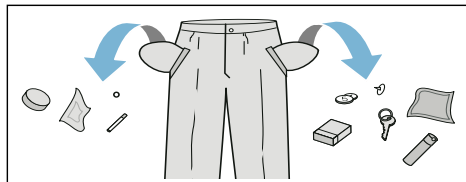
Caution!

Damage to the appliance/fabrics

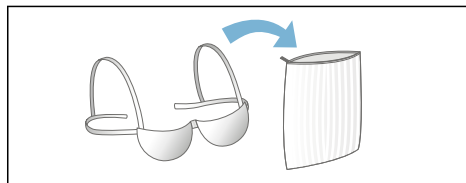
Foreign objects (e.g. coins, paper clips, needles, nails) may damage the laundry or components in the washing machine.

Therefore, note the following tips when preparing your laundry:

- Empty any pockets.



- Check for metal items (paper clips, etc.) and remove them.
- Wash delicates in a laundry bag (tights, underwired bras, etc.).



- Remove curtain fittings or place curtains in a laundry bag.
- Close any zips, button up any cover buttons.
- Brush sand out of pockets and collars.

Sorting laundry

Sort your laundry according to the care instructions and manufacturer's information on the care labels, depending on:

- Type of fabric/fibre
- Colour
 - Note:** Laundry can discolour or not be cleaned correctly. Wash white and coloured items separately. Wash new coloured items separately the first time you wash them.
- Soiling
 - Wash laundry with the same level of soiling together.
 - Some examples of soiling levels:
 - "Saving energy and detergent" on page 24

- **Light:** Do not prewash; select the **speed** setting if necessary
- **Normal**
- **Heavy:** Load less laundry; select a programme with prewash
- **Stains:** Remove/pretreat stains while they are fresh. Firstly, dab with soapy water; do not rub. Then wash the items of laundry with the appropriate programme. Stubborn or dried-in stains can sometimes only be removed by washing several times.
- Symbols on the care labels
 - Note:** The numbers in the symbols indicate the maximum washing temperature that may be used.

- Suitable for normal washing process; e.g. Cottons programme
- A gentle washing process is required; e.g. Easy-Care programme
- An especially gentle washing process is required; e.g. Delicate/Silk programme
- Suitable for washing by hand; e.g. Wool programme
- Do not machine wash.

Starching

Note: Laundry must not be treated with fabric softener.

Starching with liquid starch is possible in programmes such as **Rinse** and **Cottons**. Dose starch into compartment (if required, clean it beforehand) in accordance with the manufacturer's instructions.

Dyeing/bleaching

Dye should only be used in normal household quantities. Salt may damage stainless steel. Always follow the dye manufacturer's instructions.

Do **not** use the washing machine to bleach clothes.

Soaking

1. Pour soaking agent/detergent into compartment **II** in accordance with the manufacturer's instructions.
2. Select the desired programme.
3. Press the ▷||| button to start the programme.
4. After approx. ten minutes, press the ▷||| button to pause the programme.
5. After the desired soaking time, press the ▷||| button again to continue or change the programme.

Notes

- Load laundry of the same colour.
- No additional detergent is required; the soaking solution is used for washing.

- **Standard detergent with optical brighteners**
Suitable for boil-washable white laundry made from linen or cotton
Programme: Cottons/
cold - max. 90 °C
- **Detergent for colours without bleach or optical brighteners**
Suitable for coloured laundry made from linen or cotton
Programme: Cottons/
cold - max. 60 °C
- **Detergent for colours/delicates without optical brighteners**
Suitable for coloured laundry made from easy-care fibres, synthetic fibres
Programme: Easy-Care/
cold - max. 60 °C
- **Detergent for delicates**
Suitable for delicate, fine fabrics, silk or viscose
Programme: Delicate/Silk/
cold - max. 40 °C
- **Detergent for woollens**
Suitable for wool
Wool programme/
cold - max. 40 °C



Detergent

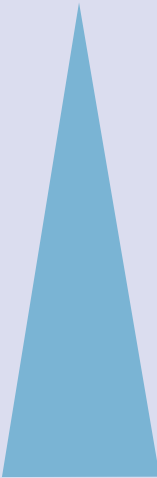
Correct selection of detergent

The care label is crucial for selecting the correct detergent, temperature and treatment of the laundry. → See also www.sartex.ch

If you visit www.cleanright.eu, you will find further information on detergents, care products and cleaning agents for domestic use.

Saving energy and detergent

For light and normal soiling, you can save energy (lower washing temperature) and detergent.

| Saving | Soiling/note |
|--|---|
|  <p>Reduced temperature and detergent quantity as per the recommended dosage</p> | <p>Light No visible dirt or stains. Clothing has taken on some body odour, e.g.:</p> <ul style="list-style-type: none"> ■ Light summer/sports clothing (worn for a few hours) ■ T-shirts, shirts, blouses (worn for up to one day) ■ Guest bed linen and hand towels (used for one day) |
| | <p>Normal Visible dirt or a few light stains, e.g.:</p> <ul style="list-style-type: none"> ■ T-shirts, shirts, blouses (sweat soaked, worn a few times) ■ Towels, bedding (used for up to one week) |
| <p>Temperature as per the care label and detergent quantity as per the recommended dosage for heavy soiling</p> | <p>Heavy Dirt and/or stains clearly visible, e.g. tea towels, baby items, work clothing</p> |

Note: When measuring the amount of all detergents/additives/care products and cleaning agents, please always check the manufacturer's instructions and information.

→ "Measuring and adding detergent and care products" on page 27

P+ Programme default settings

The programme default settings for all programmes are preset at the factory and are displayed in the display panel after the programme is selected.

You can change the default settings by repeatedly pressing the corresponding buttons until the required settings are displayed in the display panel.

Note: Pressing and holding the button automatically runs through the setting values until the last one. Press the button once more and you will be able to change the setting values again.


The available settings vary depending on the model.

You can find an overview of all settings available for selection in each programme on the supplementary sheet for the operating and installation instructions.

Spin speed

(⊙, rpm ⊙, Spin speed)

Depending on what stage the programme is in, you can change the spin speed (in rpm; revolutions per minute) before and during the programme.

Setting : The rinsing water is drained but there is no spin. The laundry stays wet inside the drum, e.g. for items that should not be spun.

Setting - - -: (Rinse Stop) = no final spin. The laundry stays in the water after the final rinse.

You can select "Rinse Stop" to prevent creasing if the laundry will not be taken out of the washing machine immediately after the programme has ended.

→ "Programme end during Rinse Stop" on page 29

Note: The maximum speed that can be set depends on the model and programme that has been selected.

Ready in

(☺, ☺ Finished in, Finish in, Ready in)

Before starting the programme, you can preselect the programme end ("Ready in" time) in hourly increments (h = hour) up to a maximum of 24 hours.

To do this:

1. Select a programme.
The programme duration is displayed for the selected programme, e.g. **2:30** (hours:minutes).
2. Press the **Ready in** button repeatedly until the required number of hours is displayed.
3. Press the ▷ button.
The door will be locked.
The selected number of hours (e.g. **8 h**) is shown in the display panel and counts down until the wash programme starts. The duration of the programme is then displayed.
Note: The programme duration is included in the selected "Ready in" time.

During the timer count-down, you can change the preselected number of hours as follows:

1. Press the ▷ button.
2. Use the **Ready in** button to change the number of hours.
3. Press the ▷ button.

During the timer count-down you can add or remove laundry as required.

Note: The length of the programme is automatically adjusted when the programme is running. Certain factors can affect the programme length, e.g.:

- Programme settings,
- Detergent dosage (additional rinse cycles if required due to foaming),
- Load size/type of textiles (longer washing for higher load and for textiles which absorb more water),
- Imbalances (e. g. due to fitted sheets) are offset with several start-ups of spin cycles,
- Fluctuations in power supply,
- Water pressure (infeeding speed).

P+ Additional programme settings

The available settings vary depending on the model.

You can find an overview of all settings available for selection in each programme on the supplementary sheet for the operating and installation instructions.

speed eco

(≡☺ ☺, ≡☺ speedperfect, ☺ ecoperfect, speed eco)

Button with two possible settings for adapting the selected programme:

- **speed**
Washing in a shorter time while achieving a washing result that is consistent with, but uses more energy than, the selected programme, without the speed setting.
Note: Do not exceed the maximum load.
- **eco**
Energy-optimised washing by reducing the temperature and increasing programme duration while achieving a washing result that

is consistent with the selected programme, without the eco setting.

If you press the **speed eco** button once, you select the **speed** setting. If you press the button again, the **eco** setting is activated. The respective symbol is shown in the display when the setting is activated. If you press the button again, no setting is activated.

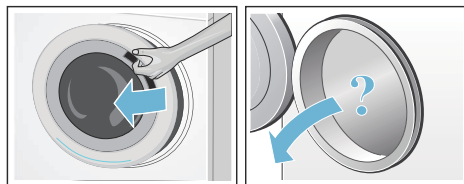


Operating the appliance

Preparing the washing machine

Notes

- The washing machine **must be correctly installed and connected.**
→ *"Positioning and connecting" on page 11*
 - Before washing for the first time, run a wash cycle without laundry.
→ *"Before washing for the first time" on page 17*
1. Connect the mains plug.
 2. Turn on the water tap.
 3. Open the door.
 4. Check that the drum is completely drained. Drain if necessary.



Switching on the appliance/ selecting a programme

Note: If you have activated the childproof lock, you must first deactivate it before you can set a programme.
→ *"Childproof lock" on page 28*

Use the programme selector to select the programme you require. The programme selector can be rotated in either direction.

The display alternately shows the programme length and the maximum load (when the door is open).

Changing the programme default settings

You can use the default settings or change them.

To do this, repeatedly select the corresponding button until the required setting is displayed.

The settings are activated without needing to be confirmed.

They are not saved when the appliance is switched off.

→ *"Programme default settings" on page 24*

Overview of programmes → Supplementary sheet for the operating and installation instructions.

Selecting additional programme settings

By selecting additional settings, you can better adapt the washing process to your items of laundry.

The settings can be selected or deselected depending on the programme progress.

The indicator lamp for the button lights up if a setting is active.

The settings are not saved when the appliance is switched off.

→ "Additional programme settings" on page 25

Overview of programmes → Supplementary sheet for the operating and installation instructions.

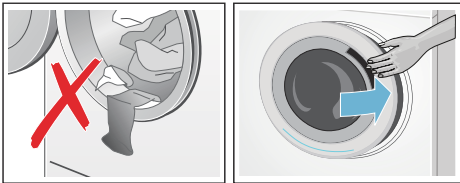
Placing laundry into the drum


Warning **Risk of death!**

Items of laundry pretreated with cleaning agents that contain solvents, e.g. stain remover/cleaning solvent, may cause an explosion after being loaded into the washing machine. Hand-rinse items of laundry thoroughly beforehand.

Notes

- Mix items of laundry of varying sizes. Laundry items of different sizes distribute themselves better during the spin cycle. Individual items of laundry may lead to imbalances.
 - Observe the specified maximum load. Overfilling has a negative impact on the washing result and promotes creasing.
1. Place presorted items of laundry unfolded in the washing drum.
 2. Make sure that no items of laundry are trapped between the washing machine door and the rubber seal, and close the door.



The  button indicator lamp flashes to indicate that the washing programme can be started. It is possible to change the settings.

→ "Programme default settings"

on page 24

→ "Additional programme settings" on page 25

Measuring and adding detergent and care products

Caution!

Damage to the appliance

Cleaning agents and agents for pre-treating laundry (e.g. stain removers, prewash sprays, etc.) may cause damage if they come into contact with the surfaces of the washing machine. Do not allow these agents to come into contact with the surfaces of the washing machine. If necessary, immediately wipe away spray residue and other residues/droplets with a damp cloth.

Dosing

Dose the detergents and care products according to:

- Water hardness (ask your water supply company)
- The manufacturer's instructions on the packaging
- The amount of laundry
- Soiling

Filling

Warning **Eye/skin irritation!**

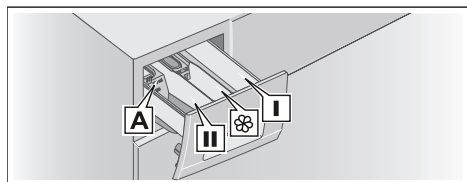
Detergents and care products may spray out if the detergent drawer is opened while the machine is in operation. Open the drawer carefully. Rinse eyes/skin thoroughly if they come into contact with detergents or care products. If accidentally swallowed, seek medical advice.

Note: Dilute viscous fabric softener and fabric conditioner with a little water. This


en Operating the appliance

prevents blockages in the washing machine's piping.

Pour the detergent and care products into the appropriate compartments:



Measuring aid **A*** For liquid detergent
Compartment **II** Detergent for the main wash, water softener, bleach, stain remover

Compartment  Fabric softener, liquid starch; do not exceed **max.**

Compartment **I** Detergent for prewash

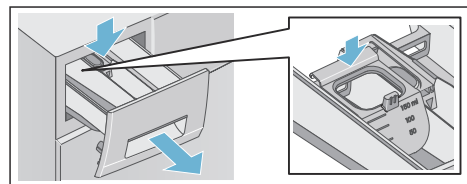
* depending on the model

1. Pull out the detergent drawer as far as possible.
2. Add detergent and/or care products.
3. Close the detergent drawer.

Measuring aid* for liquid detergent

Position the measuring aid for dosing the correct amount of liquid detergent:

1. Pull out the detergent drawer. Press down the insert and fully remove the drawer.
2. Slide the measuring aid forwards, fold it down and click it into place.
3. Reinsert the drawer.

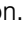


* depending on the model

Note: Do not use the measuring aid for gel detergents and washing powder, or for programmes with prewash or when the “Ready in” time is selected.

For models without a measuring aid, pour the liquid detergent into the appropriate dispenser and place it in the drum.

Starting the programme

Press the  button. The indicator lamp lights up and the programme starts.

The display panel shows the “Ready in” time while the programme is running or the programme duration and the programme progress symbols once the wash cycle has started.

→ “Display panel” on page 20


Foam detection

If you use too much detergent, too much foam may be formed during the wash cycle. Foam may be leaking out from the detergent drawer. In order to remove the foam, the appliance automatically activates additional rinse cycles. This extends programme duration.

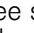
You can also remove the foam yourself. Mix one tablespoon of fabric softener with 1/2 litre of water and pour it into compartment **II**. This solution is not suitable for outdoor clothing, sportswear or items stuffed with down.

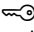
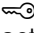
Note: To prevent the machine from forming too much foam, add less detergent to the next wash cycle with the same load.

Childproof lock

( 3 sec.)

You can lock the washing machine to prevent the functions you have set from being changed inadvertently.

To **activate/deactivate**, press and hold the **Spin speed** and **Ready in** buttons at the same time for approx. three seconds. The  symbol appears in the display panel.

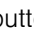
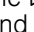
-  lights up: The childproof lock is active.
-  flashes: The childproof lock is active and the programme selector has been adjusted. If you reset the programme selector to the initial programme, the symbol lights up again.


Notes

- To avoid the programme to terminate, do not turn the programme selector beyond the off position. If the appliance is switched off while the programme is running and childproof lock is activated, the programme continues when the appliance is switched back on.
- To remove the laundry at the end of the programme, deactivate the childproof lock.
- The childproof lock remains active, even once the washing machine has been switched off.

Adding/removing laundry


After starting the programme, you can add or remove laundry as required.

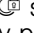
Press the  button to pause the programme. The  button indicator lamp flashes and the machine checks whether it is possible to add or remove laundry.

- If the  symbol disappears in the display panel, the washing machine door is unlocked. You can add or remove laundry.

Notes

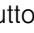
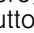
- Do not leave the door open for too long when adding/removing laundry as water from the laundry may leak out.

- The load display is not active during reloading. Press the  button to continue the programme.

- If the  symbol lights up in the display panel, it is not possible to add or remove laundry.
Note: For safety reasons, the door remains locked when the water level or temperature is high, or while the drum is turning.


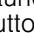
Changing the programme

If you have started the wrong programme by mistake, you can change it as follows:

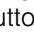

1. Press the  button.
2. Select another programme.
3. Press the  button. The new programme starts from the beginning.

Cancelling the programme

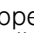
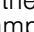
For programmes at high temperature:

1. Press the  button.
2. To cool down laundry: Select **Rinse**.
3. Press the  button.

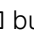
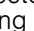
For programmes at low temperature:

1. Press the  button.
2. Select **Drain/Empty**.
3. Press the  button.

Programme end during Rinse Stop

- - -  appears in the display panel and the indicator lamp of the  button flashes.

Continue the programme by:

- Pressing the  button (the laundry will be spun with the default spin speed setting*) or
- Selecting a spin speed or setting the programme selector to **Drain/Empty** and then pressing the  button.

Programme end

End appears in the display panel and the indicator lamp of the ▷ button goes out.

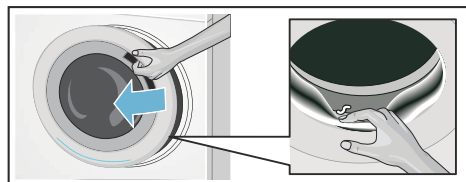
Removing laundry/switching off the appliance

1. Turn the programme selector to the off position. The appliance is switched off.
2. Open the door and remove the laundry.
3. Turn off the tap.

Note: Not required for Aqua-Stop models.

Notes

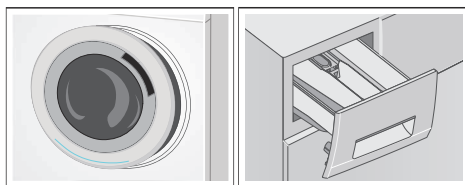
- Always wait until the programme ends, as the appliance could still be locked.
- At the end of the programme, the appliance switches to energy saving mode. The lighting goes out and the ▷ button flashes. Press any button to activate the panel.
- Do not leave any items of laundry in the drum. They may shrink in the next wash or discolour another item.
- Remove any foreign objects from the drum and the rubber seal – risk of rusting.



- Wipe the rubber seal and the washing machine door dry.

* depending on the chosen programme → Overview of programmes on supplementary sheet for the operating and installation instructions

- Leave the door and detergent drawer open so that any residual water can evaporate.



Sensors

Automatic load sensing

The automatic load-sensing function perfectly adapts the water consumption to each programme depending on the type of fabric and the load.

Unbalanced load detection system

The automatic unbalanced load detection system detects imbalances and ensures even distribution of the laundry by repeatedly starting and stopping the drum spinning.

If the laundry is extremely unevenly distributed, the spin speed is reduced or the spin cycle is not performed for safety reasons.

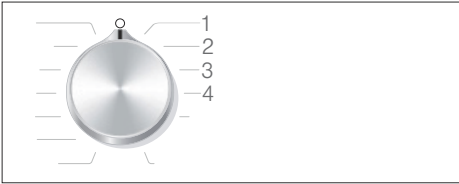
Note: Place large and small items of laundry evenly in the drum.
→ "Faults and what to do about them" on page 34

Appliance settings

You can change the following settings:


- The volume of the information signals (e.g. at the end of the programme) and/or
- The volume of the button signals.

In order to change these settings, you will need to activate the setting mode.



1/2/3/4... positions on the programme selector

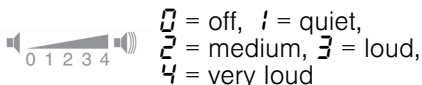
Activating the setting mode

1. Turn the programme selector to position 1. The washing machine is switched on.
2. Press the  button and, at the same time, turn the programme selector clockwise to position 2. Release the button.

The setting mode is activated and the preset volume for the information signals appears in the display panel (e.g. at the end of the programme).

Changing the volume

- To change the volume of the **information signals**, use the **Ready in** button while the programme selector remains at position 2.
- To change the volume of the **button signals**, rotate the programme selector to position 3. Use the **Ready in** button again to change the volume.



Exiting setting mode

You can now end the process and set the programme selector to the off position. The settings are saved.

Cleaning and maintenance

Warning **Risk of death!**

There is a risk of electric shock if you touch live components. Switch off the appliance and disconnect the mains plug.

Warning **Risk of poisoning!**

Toxic vapours can be produced by cleaning agents that contain solvents, e.g. cleaning solvent. Do not use cleaning agents that contain solvents.

Caution! **Damage to the appliance**

Cleaning agents that contain solvents, e.g. cleaning solvent, can damage surfaces and components in the machine. Do not use cleaning agents that contain solvents.

Prevent detergent residue from building up and odours from forming by following these instructions:

Notes

- Ensure the room in which the washing machine is set up is well ventilated.
- Leave the door and detergent drawer open slightly when the washing machine is not in use.
- Occasionally run a wash using the **Cottons 60 °C** programme with washing powder.

Machine housing/control panel

- Wipe the housing and the control panel with a soft, damp cloth.
- Remove the detergent residue immediately.
- Do not clean with a water jet.

Drum

Use chlorine-free cleaning agents, do not use steel wool.

If there are odours in the washing machine, or to clean the drum, run the **Cottons 90 °C** programme without laundry. Add washing powder.

Descaling

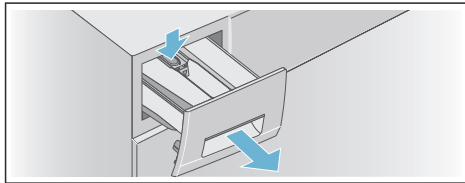
Descaling should not be necessary if the detergent is measured out correctly. However, if it is required, follow the manufacturer's instructions for the descaling agent. Suitable descalers can be obtained via our website or from our after-sales service. → Page 38

Detergent drawer and housing

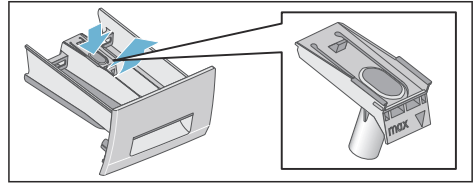
After the washing cycle, detergent or fabric softener residues may remain in the detergent drawer or on its housing.

To remove residues:

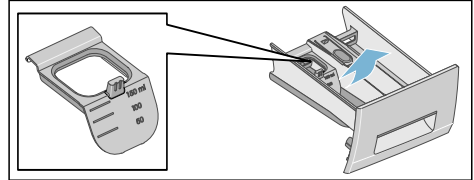
1. Pull out the detergent drawer. Press down the insert and fully remove the drawer.



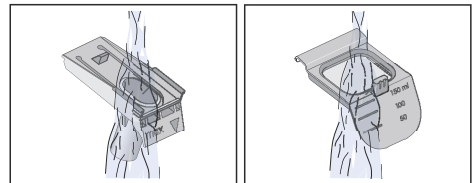
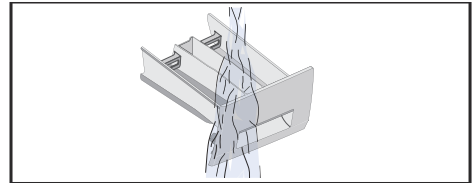
2. Remove the insert.
 - a) Push the insert upwards from below with your finger.



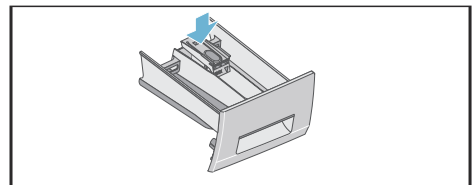
- b) If the measuring aid* for liquid detergent is used, pull it upwards.



3. Clean the detergent drawer and insert with water and a brush, and dry it. Clean the inside of the housing as well.

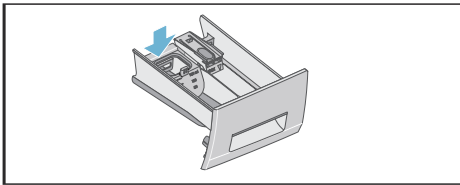


4. Fit the insert and lock it into place.
 - a) Push the cylinder onto the guide pin.

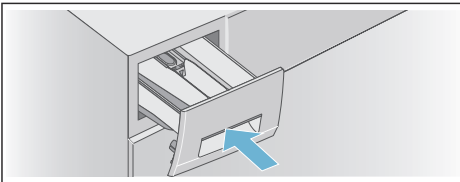


* depending on the model

- b) If the measuring aid* for liquid detergent is used, slide it forwards, fold down and click into place.



5. Push in the detergent drawer.



Note: Leave the detergent drawer open so that any residual water can evaporate.

Drain pump is blocked

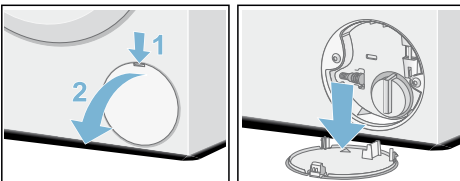
Warning **Risk of scalding!**

When you wash at high temperatures, the water gets very hot. If you come into contact with the hot water, you may be scalded.

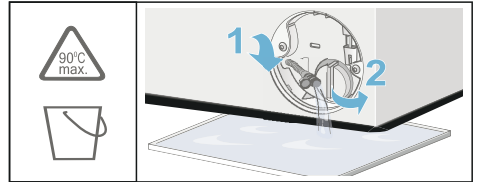
Allow the water to cool down.

After the water has cooled down:

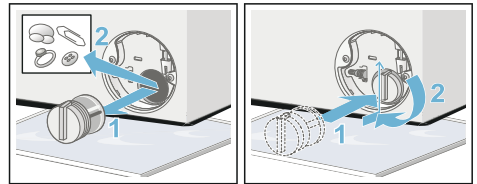
1. Turn off the water tap so that no more water can flow in and has to be drained via the drain pump.
2. Switch off the appliance. Disconnect the mains plug.
3. Open and remove the service flap.



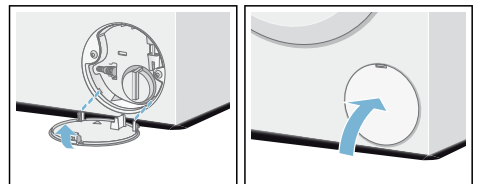
4. Take the drain hose out of the retainer. Remove the sealing cap and allow the water to flow out into a suitable container. Replace the sealing cap and place the drain hose in the retainer.



5. Carefully unscrew the pump cover; residual water may leak out. Clean the interior, pump cover thread and pump housing. The impeller in the drain pump must be able to rotate. Refit the pump cover and screw it on tightly. The handle must be in a vertical position.



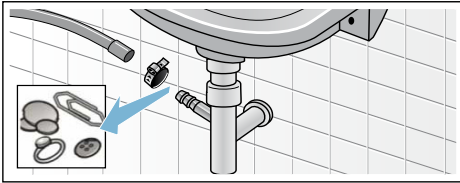
6. Place the service flap back on, lock it into place, and close it.



Note: To prevent unused detergent from flowing straight into the drain during the next wash, pour 1 litre of water (without detergent) into compartment II and start the **Drain/Empty** programme. Do the next wash as usual.

Drain hose at the siphon is blocked

1. Switch off the appliance. Disconnect the mains plug.
2. Loosen the hose clamp. Carefully remove the drain hose; residual water may leak out.
3. Clean the drain hose and siphon connecting piece.




4. Reattach the drain hose and secure the connection using the hose clamp.

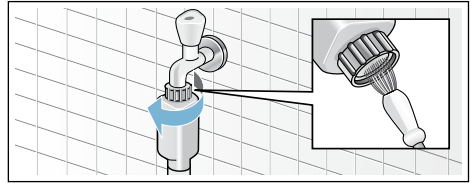
Filter in the water supply is blocked

Warning **Risk of electric shock!**

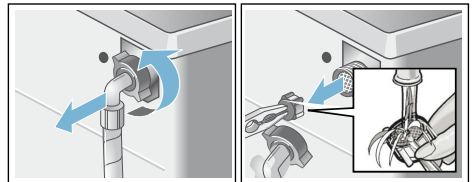
The Aqua-Stop contains an electric valve. There is a risk of electric shock if you immerse the Aqua-Stop safety valve in water. Do not immerse the safety valve in water.

First, reduce the water pressure in the supply hose:

1. Turn off the tap.
2. Select any programme (except Rinse/Spin/Drain/Empty).
3. Press the  button. Allow the programme to run for approximately 40 seconds.
4. Turn the programme selector to the off position. Disconnect the mains plug.
5. Clean the filter on the tap: Disconnect the hose from the tap. Clean the filter with a small brush.



6. For standard and Aqua-Secure models, clean the filter on the rear of the appliance: Remove the hose from the rear of the appliance. Use pliers to remove the filter and then clean it.



7. Insert the filter, connect the hose and check for leaks.

Faults and what to do about them

Emergency release

e.g. in the event of a power outage

Note: The programme will continue running when the power supply has been restored.

Warning **Risk of scalding!**

When you are washing at high temperatures, there is a risk of scalding if you come into contact with detergent solution and laundry. If possible, leave it to cool down.

⚠ Warning**Risk of injury!**

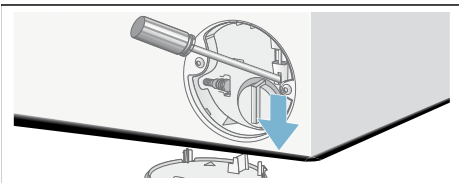
You may injure your hands if you reach into the drum while it is turning.
Do not reach into the drum when it is turning. Wait until the drum has stopped turning.

Caution!**Water damage**





Any escaping water may cause water damage. Do not open the washing machine door if water can be seen through the glass.

If the laundry has to be removed, the washing machine door can be opened as follows:

1. Switch off the appliance. Disconnect the mains plug.
2. Drain the water.
3. Pull the emergency release downwards with a tool and release. The washing machine door can now be opened.

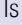
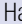
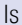






Information on the display panel

| Display | Cause/remedy |
|--|--|
|  lights up | <ul style="list-style-type: none"> ■ The temperature is too high. Wait until the temperature drops. ■ The water level is too high. It is not possible to add laundry. Close the door immediately, if necessary. Press the ▷ button to continue the programme. |
|  flashes | <ul style="list-style-type: none"> ■ Laundry may be caught. Open and close the door again and press the ▷ button. ■ If necessary, push the door closed or remove some laundry and then push it closed again. ■ If necessary, switch the appliance off and on again; set the programme and make your individual settings; start the programme. |
|  lights up | <ul style="list-style-type: none"> ■ Turn on the cold water tap fully, ■ Supply hose kinked/trapped, ■ The water pressure is too low. Clean the filter. → Page 34 |
| E: 18 | <ul style="list-style-type: none"> ■ The drain pump is blocked. Clean the drain pump. → Page 33 ■ The drain hose/drain pipe is blocked. Clean the drain hose at the siphon. → Page 34 |
| E: 23 | There is water in the base plate, the appliance is leaking. Turn off the tap. Call the after-sales service. → Page 38 |
| E: 32 | <p>flashes alternately with End at the end of the programme.</p> <p>Not a fault – the unbalanced load detection system has interrupted the spin cycle because the laundry is unevenly distributed.</p> <p>Distribute small and large items of washing in the drum. If required, spin the laundry once more.</p> |
|  | The childproof lock is activated – deactivate it. → Page 28 |
| Other displays | Switch off the appliance, wait for five seconds and then switch it on again. If the display appears again, call the after-sales service. → Page 38 |
| * depending on the model | |

Faults and what to do about them

| Faults | Cause/Remedy |
|--|---|
| Water is leaking from the appliance. | <ul style="list-style-type: none"> ■ Attach the drain hose correctly or replace it. ■ Tighten the screw connection of the drain hose. |
| The machine is not filling with water. | <ul style="list-style-type: none"> ■ Have you pressed the ▷ button? ■ Is the tap turned on? |
| Detergent is not being dispensed. | <ul style="list-style-type: none"> ■ Could the filter be clogged? Clean the filter. → Page 34 ■ Is the supply hose kinked or trapped? |

| Faults | Cause/Remedy |
|--|---|
| The door cannot be opened. | <ul style="list-style-type: none"> ■ The safety function is activated. Note: For safety reasons, the washing machine door remains locked when the water level or temperature is high (see → "Cancelling the programme" on page 29) or while the drum is rotating. ■ Is the childproof lock  activated? Deactivate it. → Page 28 ■ Is - - (Rinse Stop = no final spin) selected? → Page 29 ■ Can the door only be opened by the emergency release? → Page 34 |
| The programme will not start. | <ul style="list-style-type: none"> ■ Have you pressed the  button? → Page 28 ■ Is Ready in selected? ■ Is the door closed? ■ Is the childproof lock  activated? Deactivate it. → Page 28 |
| The drum briefly jerks or judders after the programme has started. | Not a fault – the internal motor test may cause the drum to jerk or judder briefly when the wash programme starts. |
| The water is not draining. | <ul style="list-style-type: none"> ■ Is - - (Rinse Stop = no final spin) selected? → Page 29 ■ Clean the drain pump. → Page 33 ■ Clean the drain pipe and/or the drain hose. → Page 34 |
| Water is not visible in the drum. | Not a fault – the water is below the visible area. |
| The spin result is not satisfactory. Laundry is wet/too damp. | <ul style="list-style-type: none"> ■ Not a fault – the unbalanced load detection system has interrupted the spin cycle because the laundry is unevenly distributed. Distribute small and large items of laundry evenly in the drum. ■ Is the selected speed too low? |
| The spin cycle runs several times. | Not a fault – the unbalanced load detection system is adjusting an imbalance. |
| The programme is taking longer than usual. | <ul style="list-style-type: none"> ■ Not a fault – the unbalanced load detection system is adjusting an imbalance by repeatedly distributing the laundry. ■ Not a fault – the foam detection is system active – a rinse cycle has been switched on. |
| The length of the programme changes during the wash cycle. | Not a fault – the programme sequence is optimised for the specific washing process. This may change the length of the programme shown in the display panel. |
| Residual water in the care-product compartment  . | <ul style="list-style-type: none"> ■ Not a fault – the effect of the care product is not impaired. ■ Clean the insert if necessary. |
| Odours or greasy deposits in the washing machine. | <p>Run the programme Cottons 90 °C without laundry. Add washing powder or a detergent containing bleach.</p> <p>Note: To prevent foaming, only use half the amount of detergent recommended by the detergent manufacturer. Do not use detergents designed for wool or delicates.</p> |
| Foam is leaking from the detergent drawer. | Have you used too much detergent? → "Foam detection" on page 28 |

| Faults | Cause/Remedy |
|--|---|
| Loud noises, vibrations and machine "movement" during the spin and/or drain cycles. | <p>The noise level during pumping is different from the one during washing.</p> <ul style="list-style-type: none"> ■ Is the appliance aligned? Align the appliance. → <i>Page 16</i> ■ Are the appliance's feet secured? Secure the appliance's feet. → <i>Page 16</i> ■ Have the transport locks been removed? Remove the transport locks. → <i>Page 14</i> |
| The display panel/indicator lights do not work while the appliance is running. | <ul style="list-style-type: none"> ■ Has there been a power cut? ■ Have the fuses blown? Reset/replace the fuses. ■ If the fault occurs repeatedly, call the after-sales service. → <i>Page 38</i> |
| There is detergent residue on the laundry. | <ul style="list-style-type: none"> ■ Some phosphate-free detergents contain water-insoluble residue. ■ Select Rinse or brush the laundry after washing. |
| The  symbol lights up in the display in pause mode. | <ul style="list-style-type: none"> ■ The water level is too high. It is not possible to add laundry. Close the door immediately, if necessary. ■ Press the  button to continue the programme. |
| In the pause mode, the  symbol in the display goes out. | The door is unlocked. It is possible to add laundry. |
| <p>If you cannot rectify a fault yourself (after switching the machine off and on again) or a repair is required:</p> <ul style="list-style-type: none"> ■ Switch off the appliance and disconnect the mains plug. ■ Turn off the tap and call the after-sales service. → <i>Page 38</i> | |



After-sales service

If you cannot rectify a fault yourself, please contact our after-sales service.

We will always find an appropriate solution to avoid unnecessary visits by engineers.

Please provide the after-sales service with the product number (E no.) and the production number (FD) of the appliance.

| | |
|-------------|----------|
| E-Nr. _____ | FD _____ |
|-------------|----------|

E no.
FD

Product number
Production number

You can find this information (depending on the model):

- On the inside of the loading door or the service flap
- On the back of the appliance

Trust the expertise of the manufacturer. Contact us. By doing so, you can be sure that the repairs are carried out by trained service personnel using genuine spare parts.



Technical data

Dimensions:

850 x 600 x 550 mm

(Height x width x depth)

Weight

63-83 kg (depending on model)

Mains connection:

Mains voltage 220-240 V, 50 Hz

Nominal current 10 A

Nominal output 2300 W

Water pressure:

100-1000 kPa (1-10 bar)

Power consumption when switched off:

0.12 W

Power consumption when ready for use (left-on mode):

0.50 W

Our warranty does not cover defective feed lines or fittings leading to the Aqua-Stop connection at the tap.

- Appliances with Aqua-Stop do not need to be supervised during operation, nor secured afterwards by turning off the tap. The tap only needs to be turned off if you are away from home for a long period, e.g. for several weeks' holiday.



Aqua-Stop warranty

Only for appliances with Aqua-Stop

In addition to warranty claims against the vendor based on the purchase agreement and to our appliance warranty, we will provide compensation under the following conditions:

- If water damage is caused due to a fault in our Aqua-Stop system, we will compensate domestic customers for the damage caused.
- The liability guarantee is valid for the service life of the appliance.
- It is a prerequisite of all warranty claims that the appliance with Aqua-Stop must have been installed and connected correctly in accordance with our instructions; this also includes a correctly fitted Aqua-Stop extension (genuine accessories).

Repair order and advice in the event of faults

GB 0344 892 8999 (Calls charged at local or mobile rate.)

IE 01450 2655 (0.03 € per minute at peak. Off peak 0.0088 € per minute.)

You can find the contact information for all countries in the attached after-sales service directory.

BSH Hausgeräte GmbH

Carl-Wery-Straße 34

81739 München

GERMANY

siemens-home.bsh-group.com

Manufactured by BSH Hausgeräte GmbH under Trademark License of Siemens AG



9001255969 (9702)