

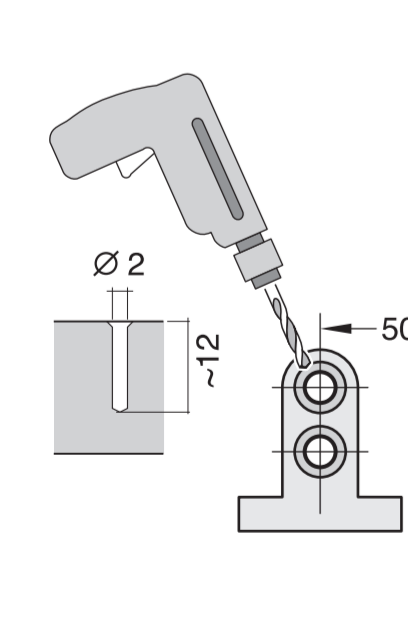
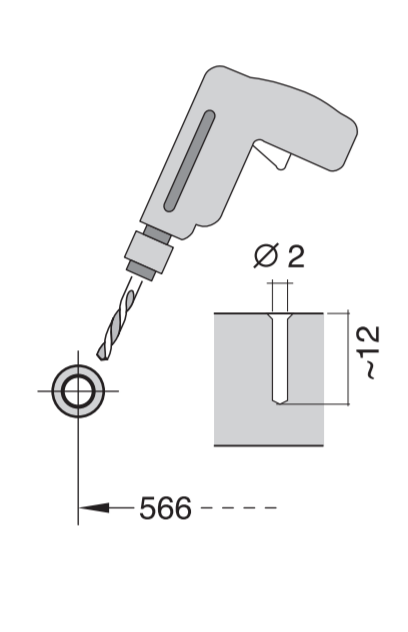
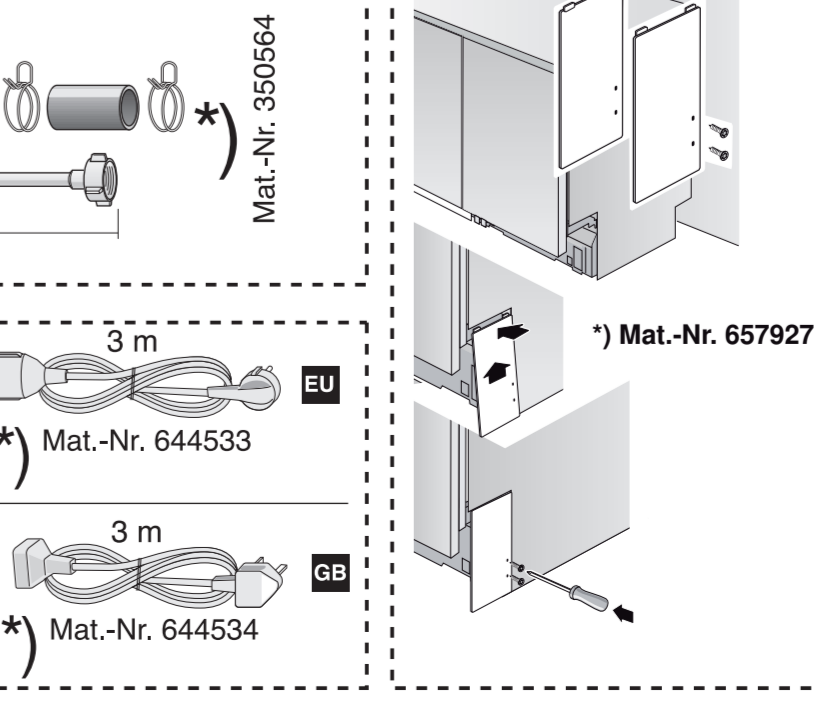
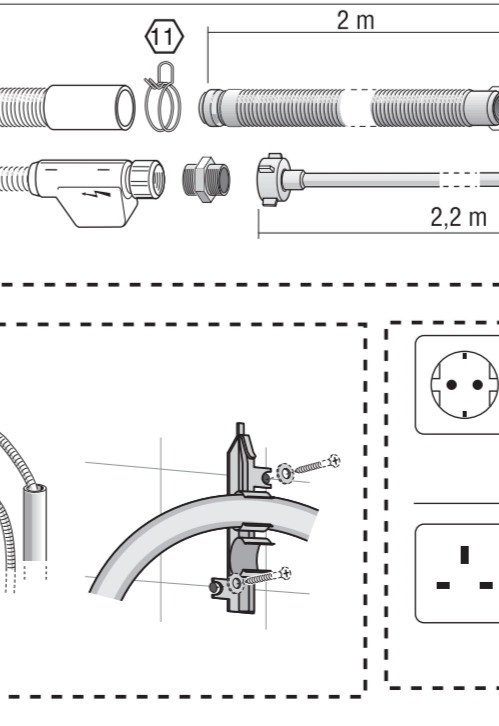
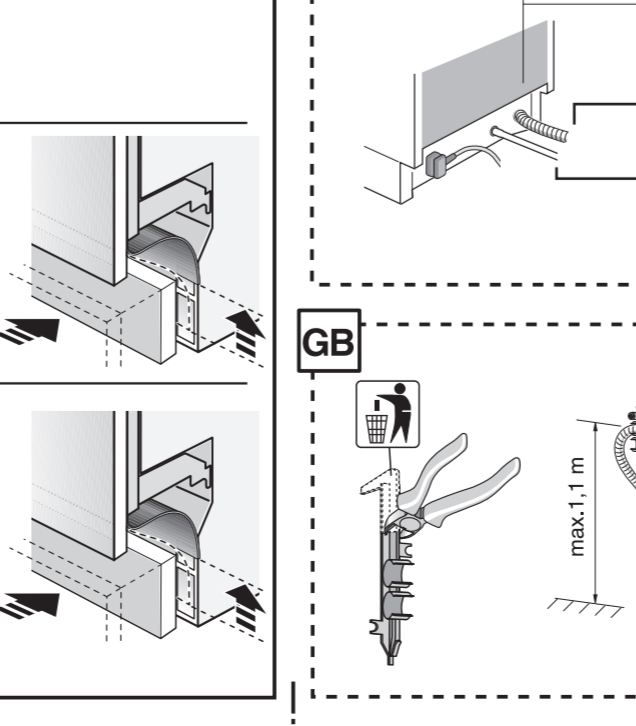
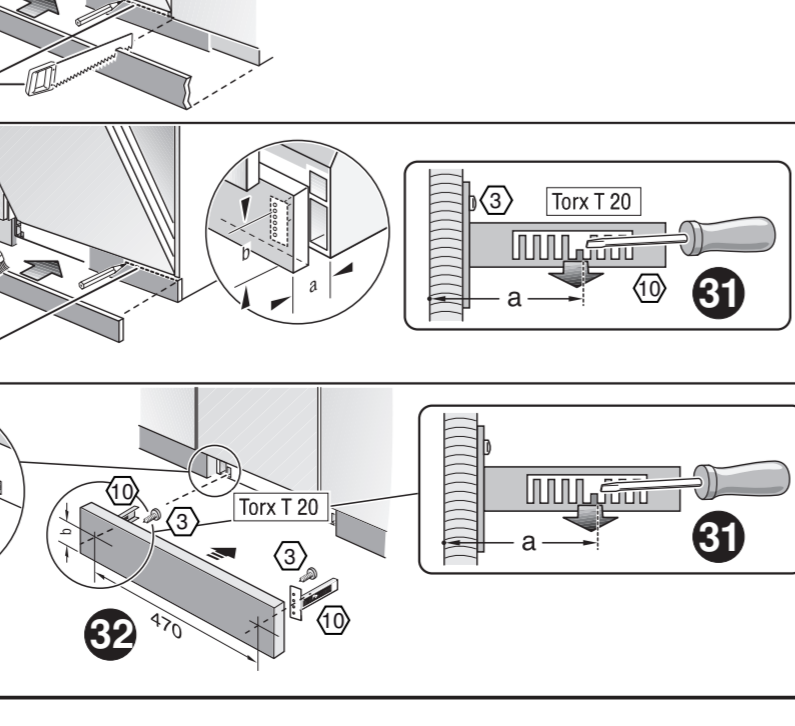
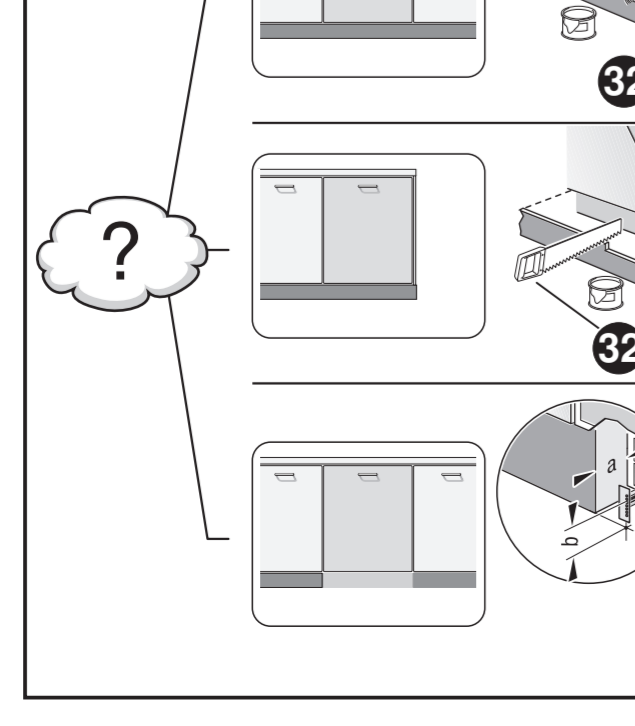
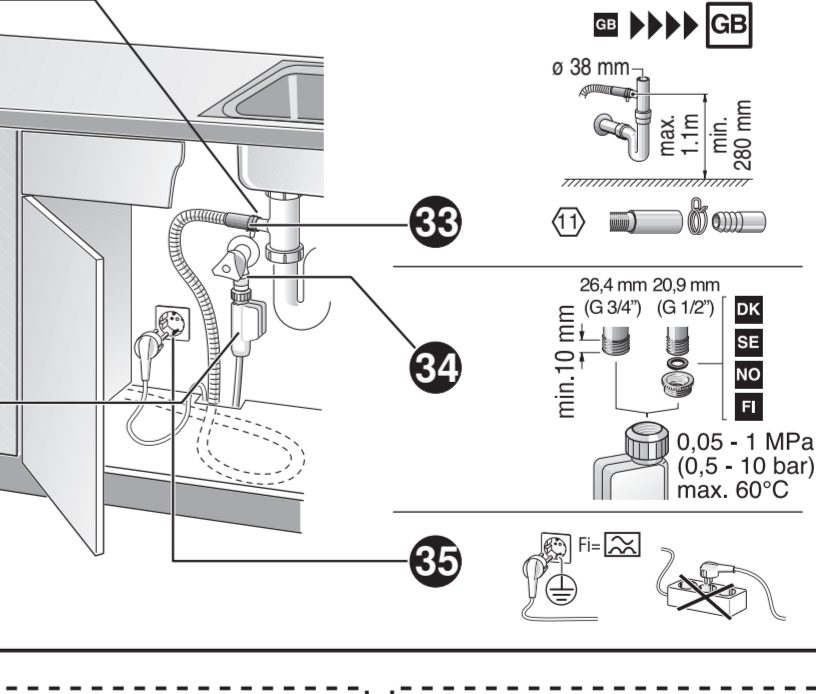
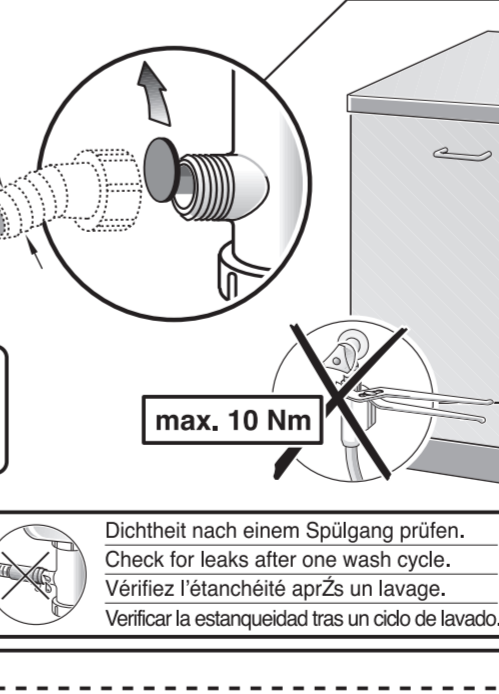
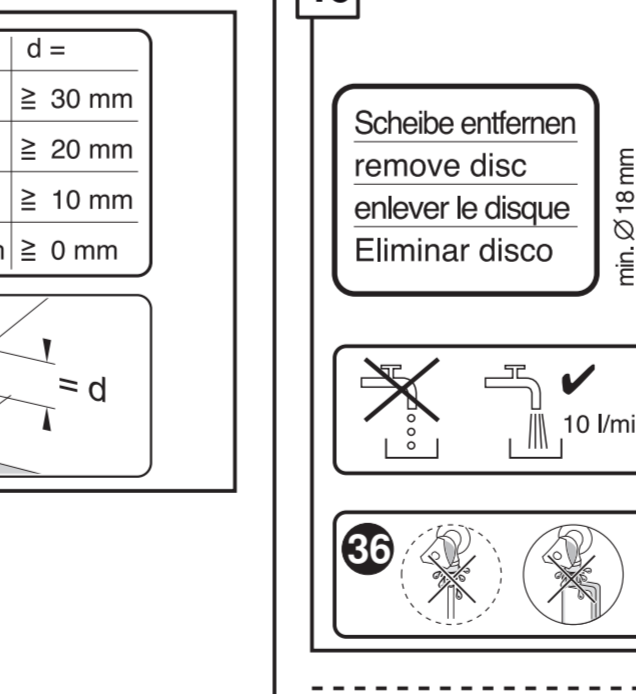
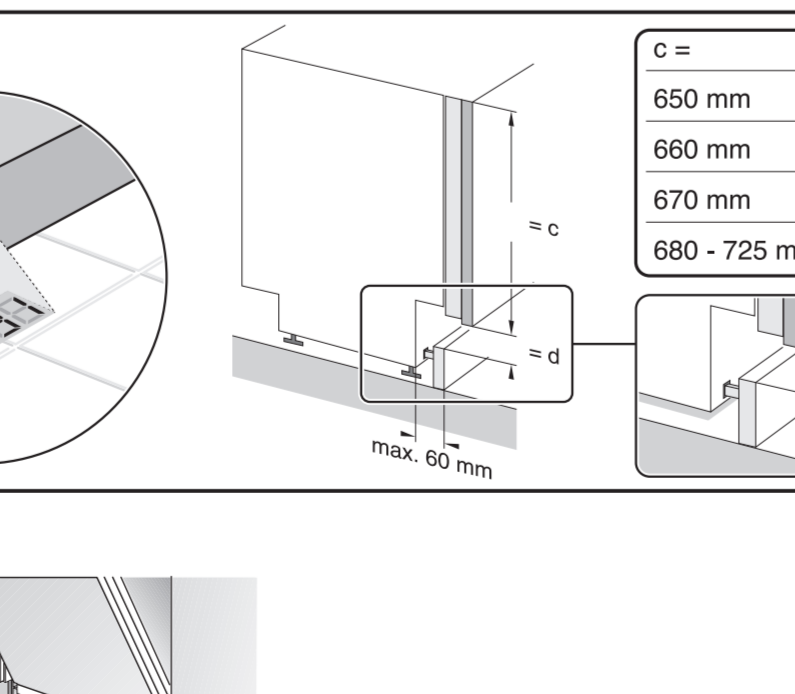
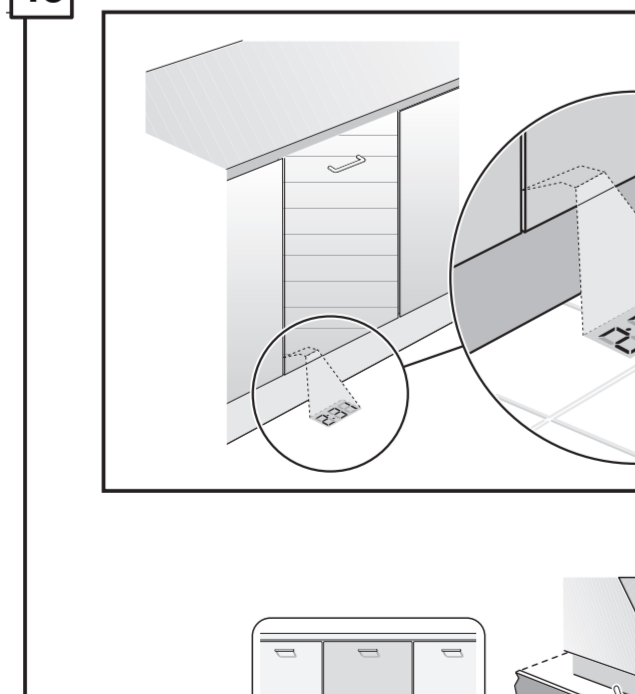
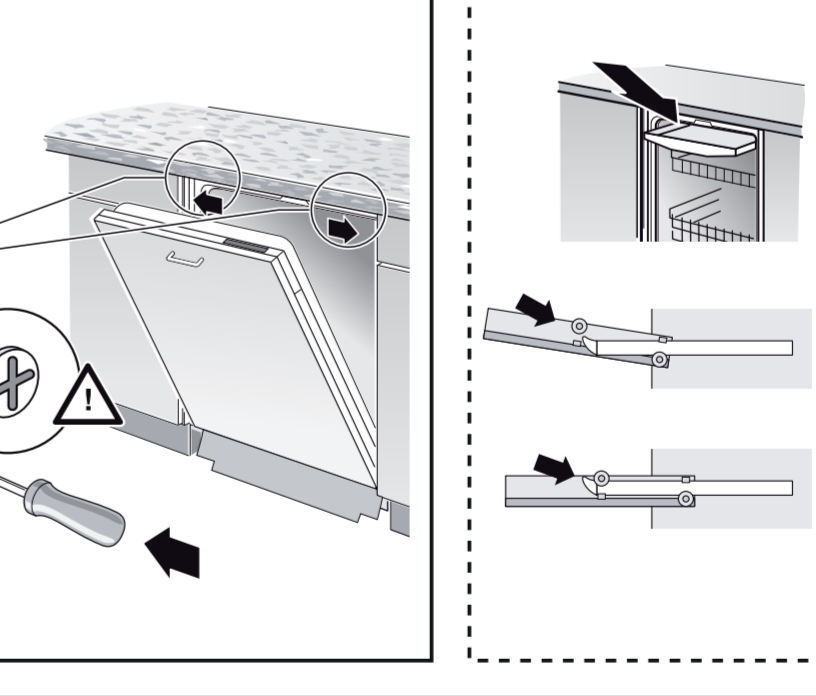
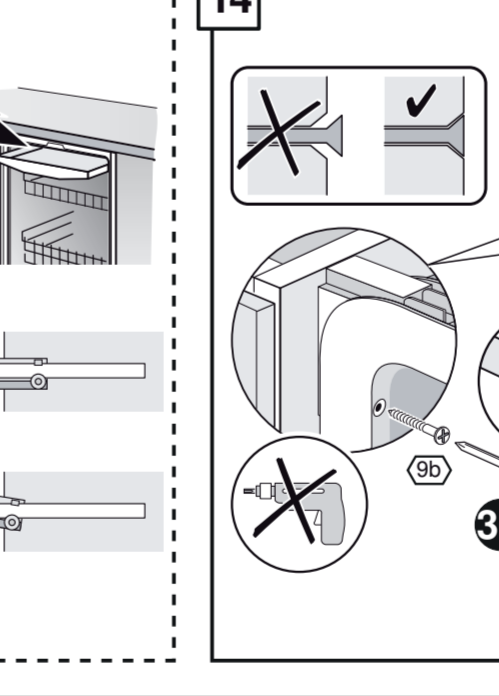
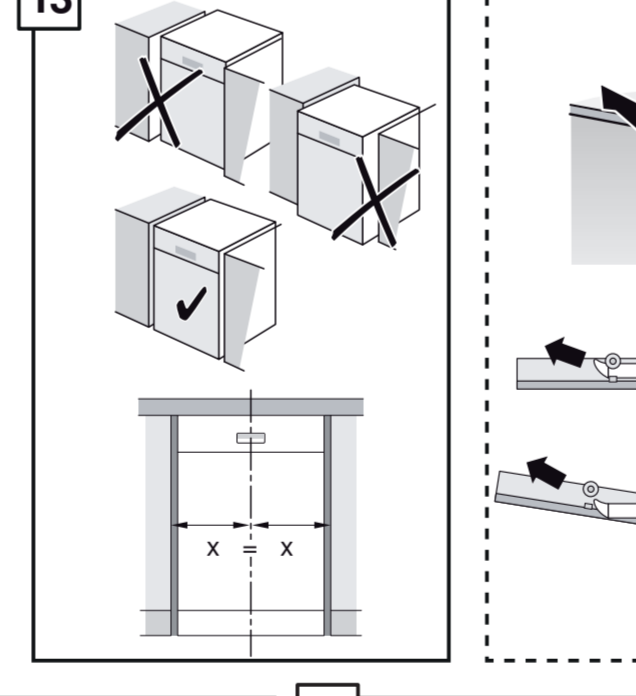
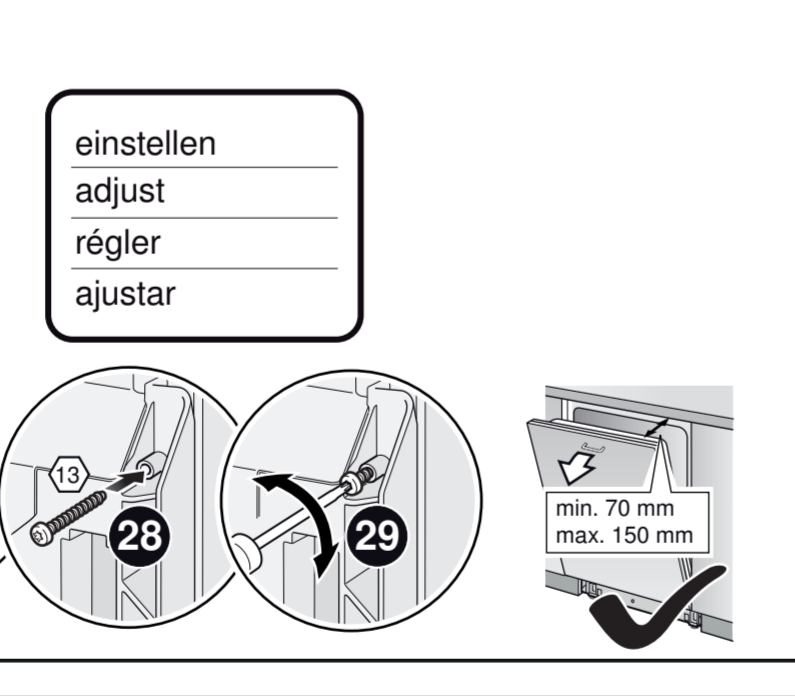
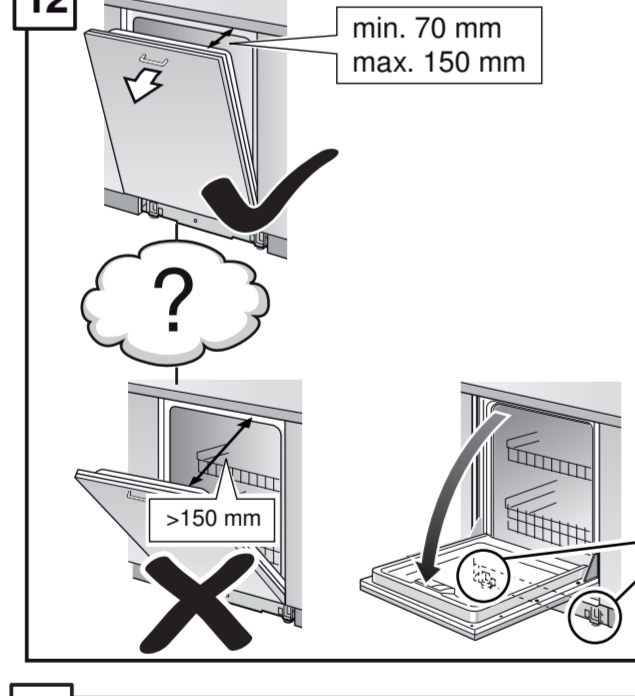
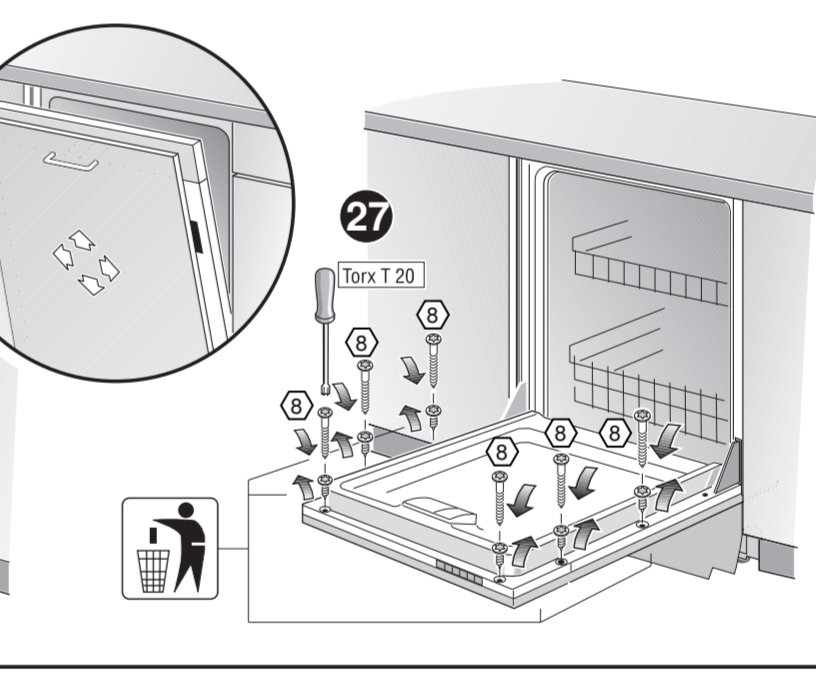
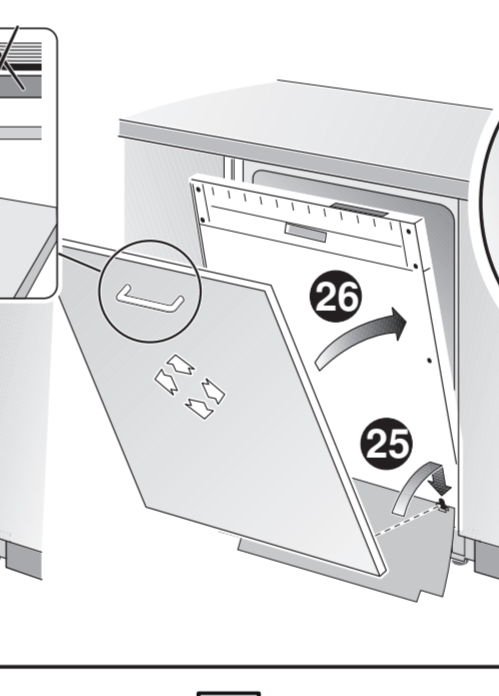
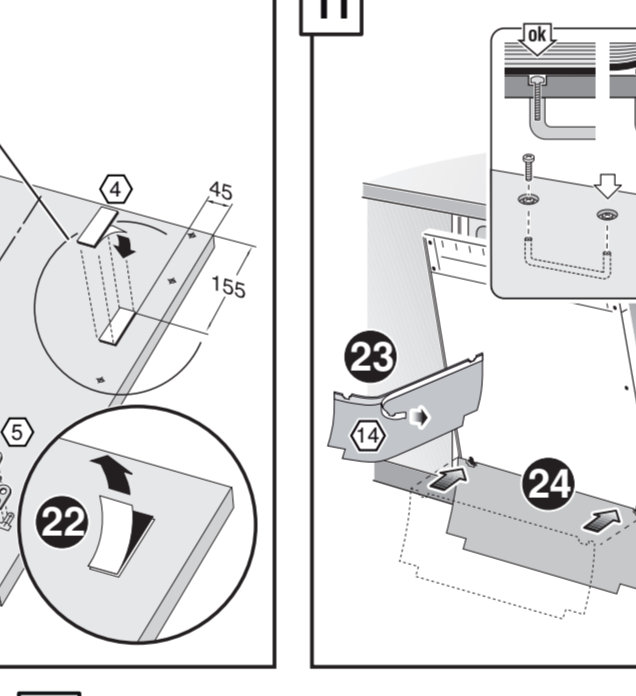
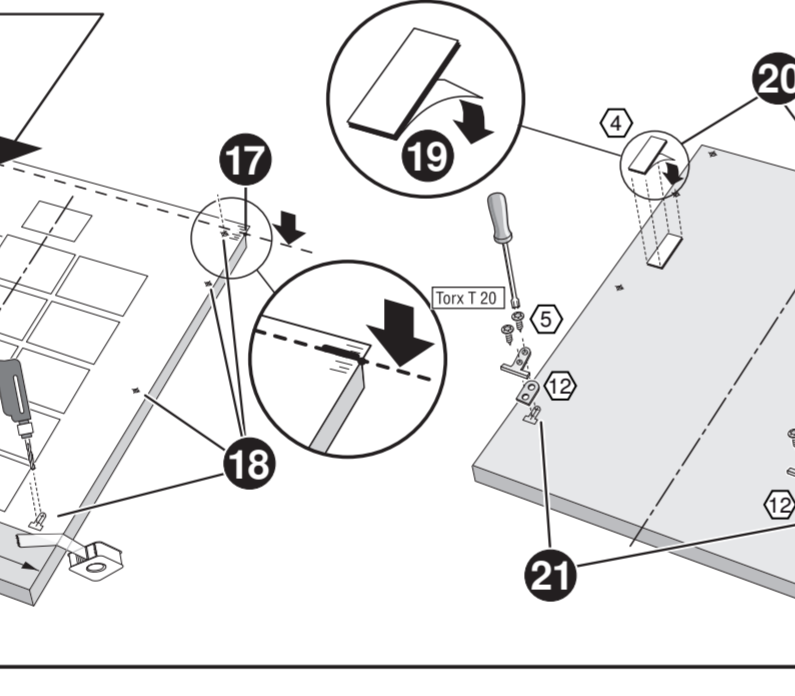
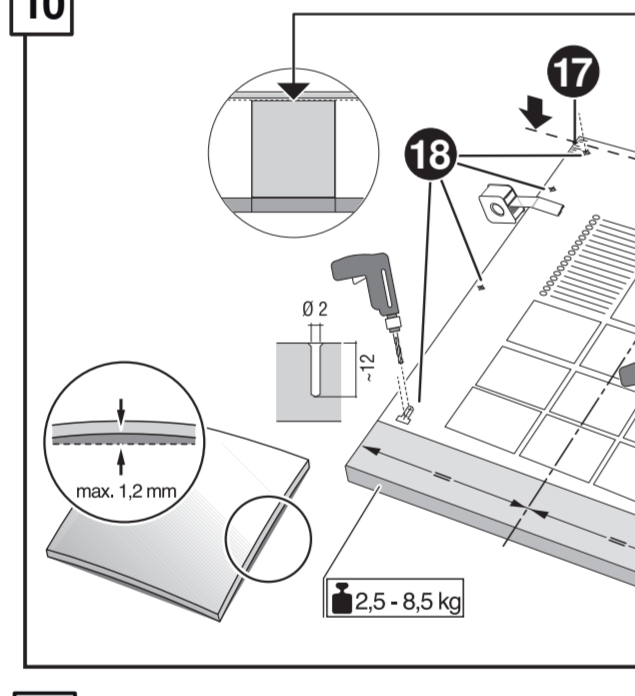
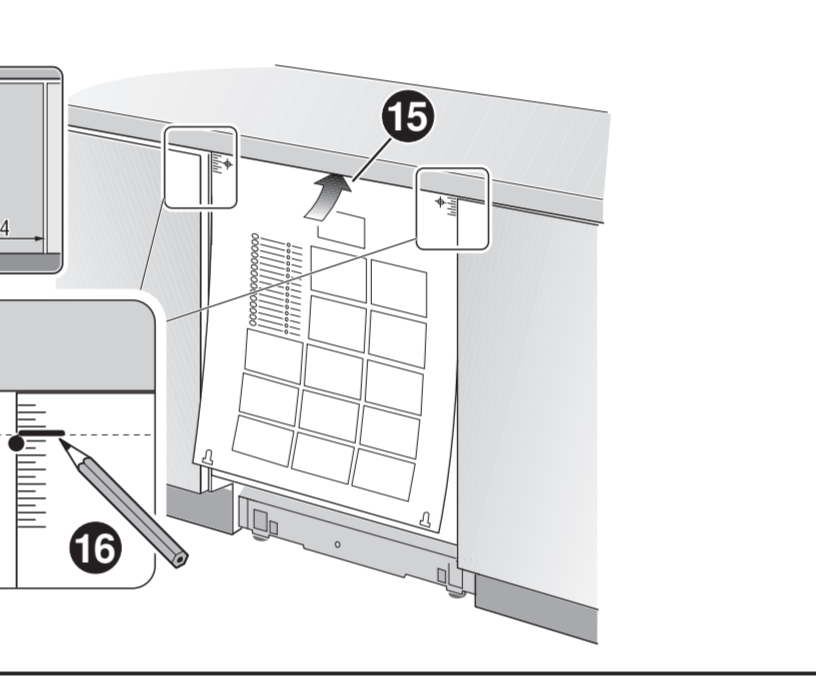
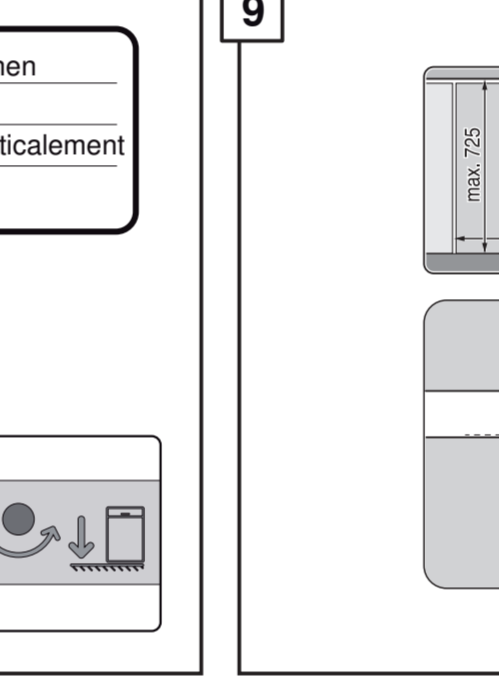
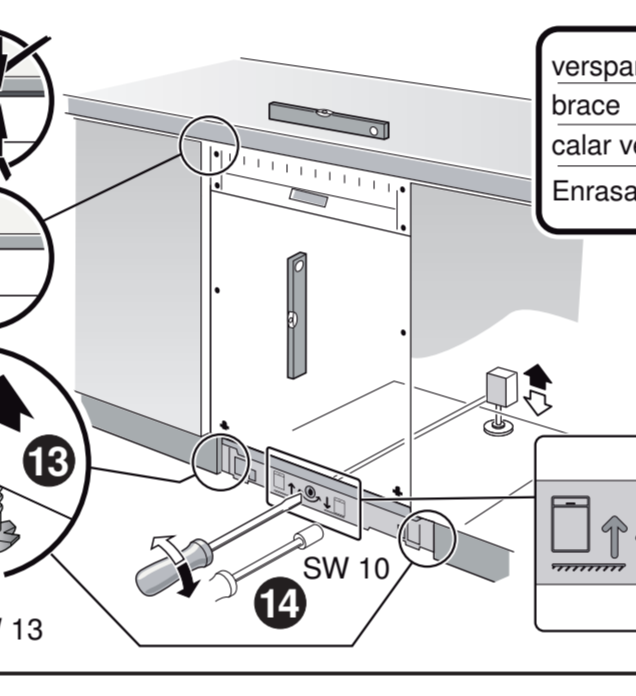
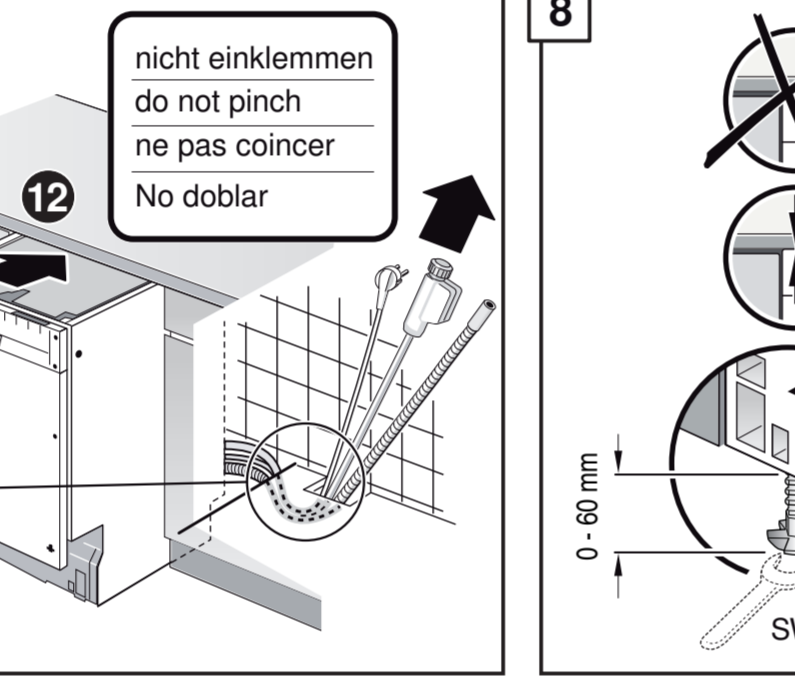
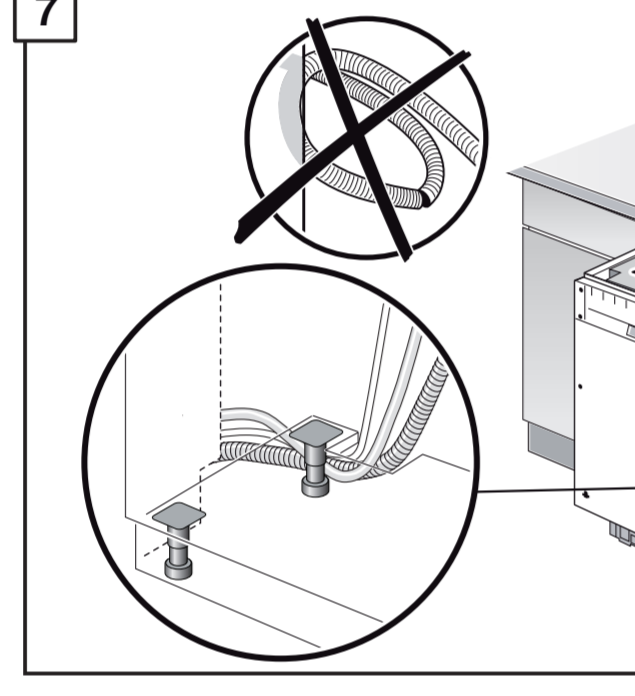
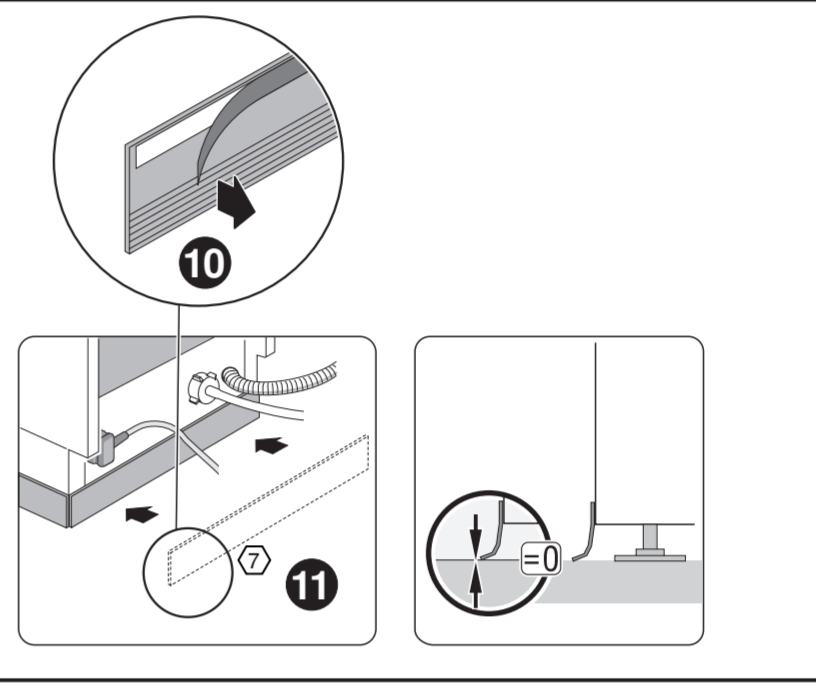
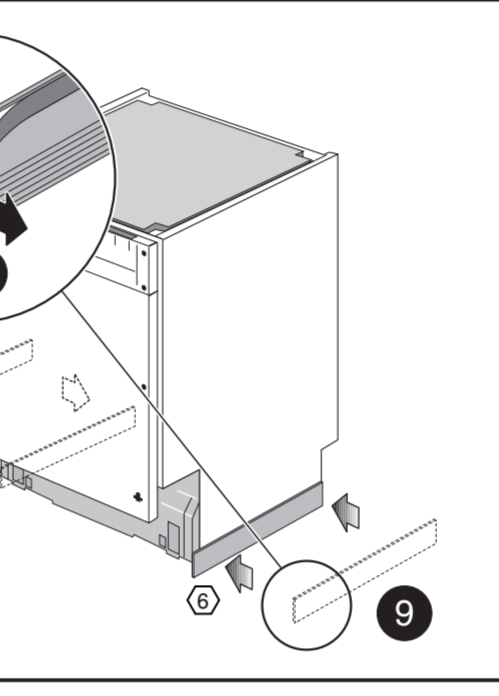
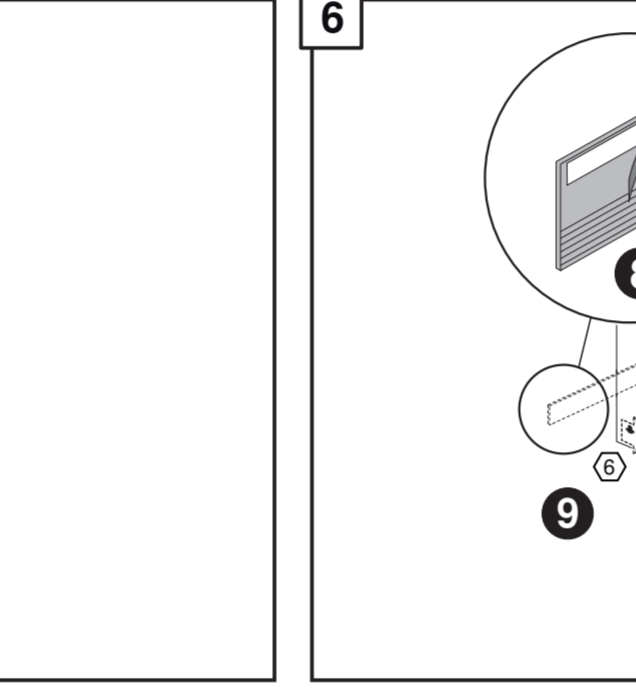
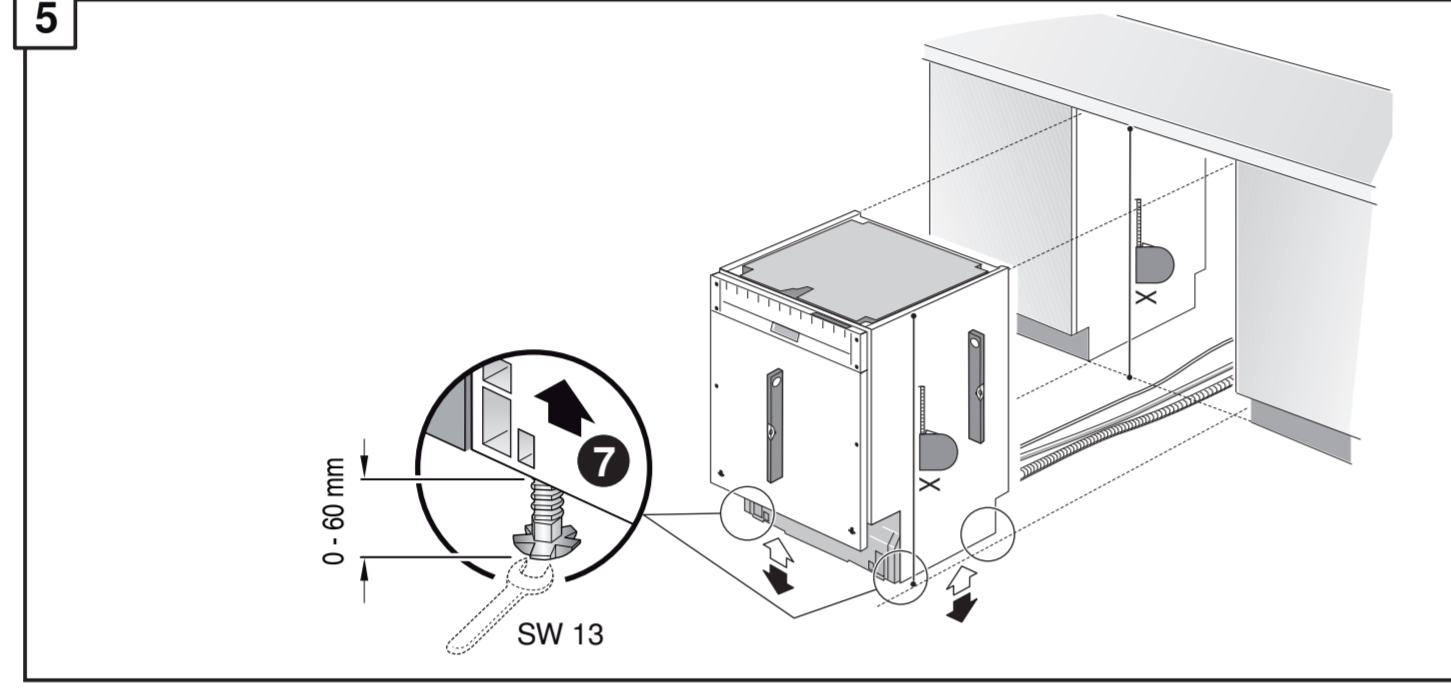
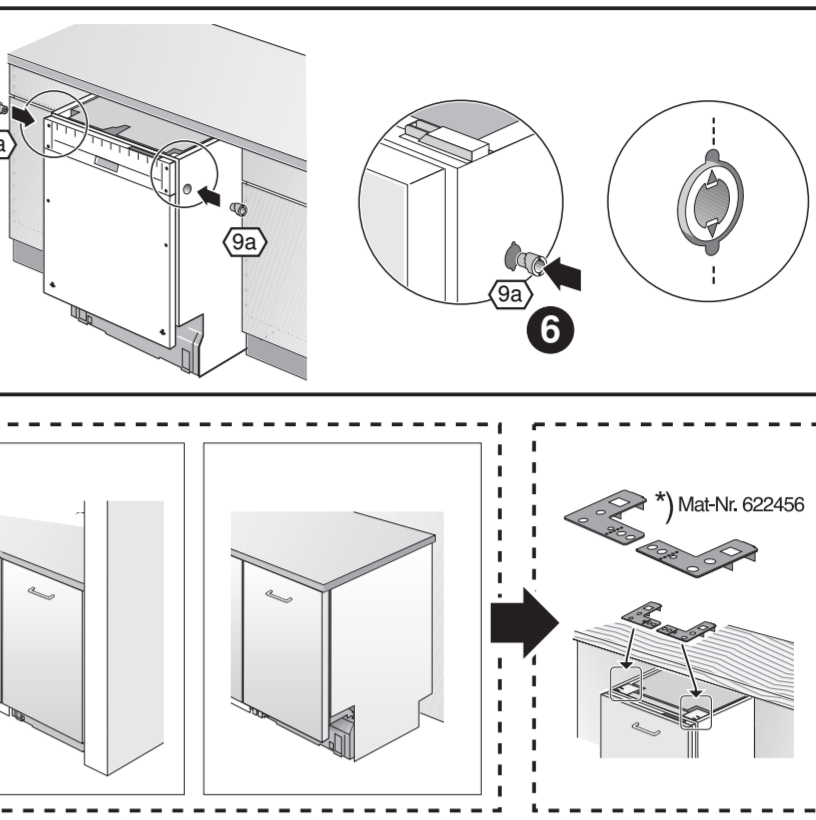
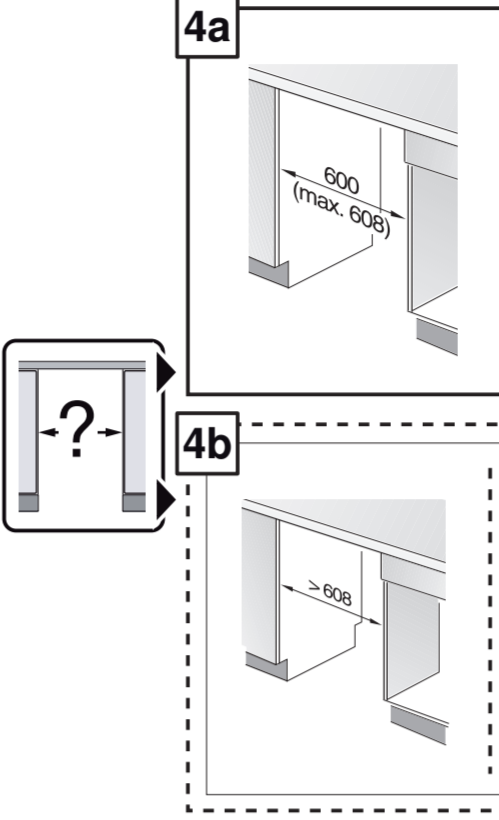
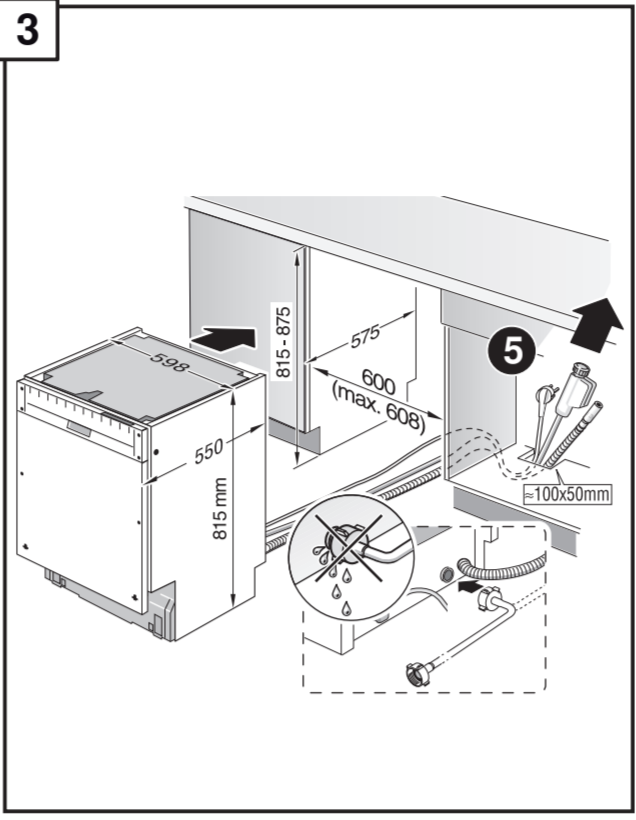
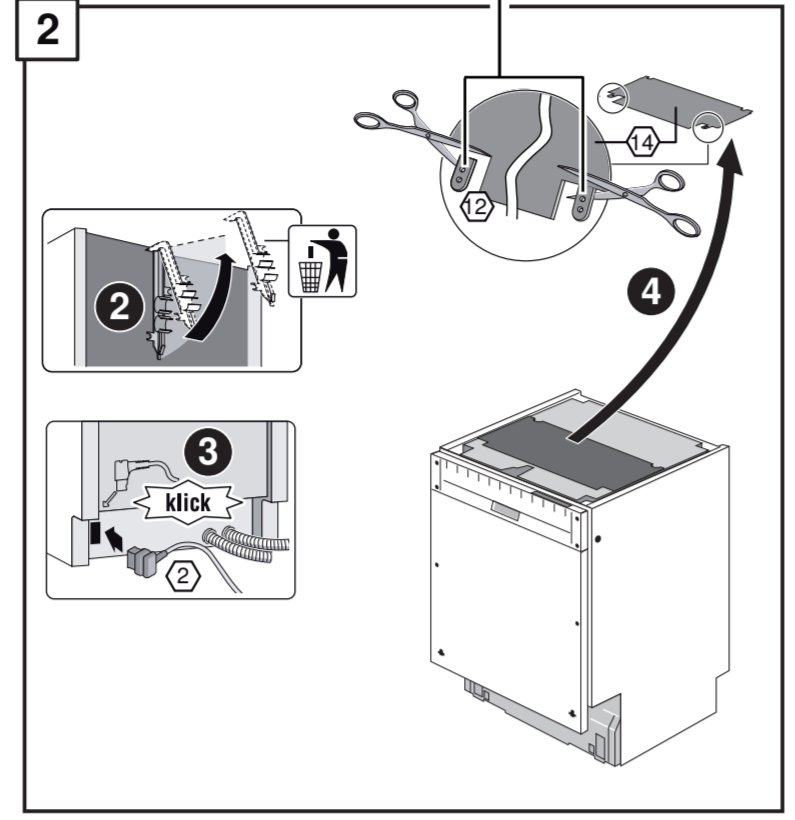
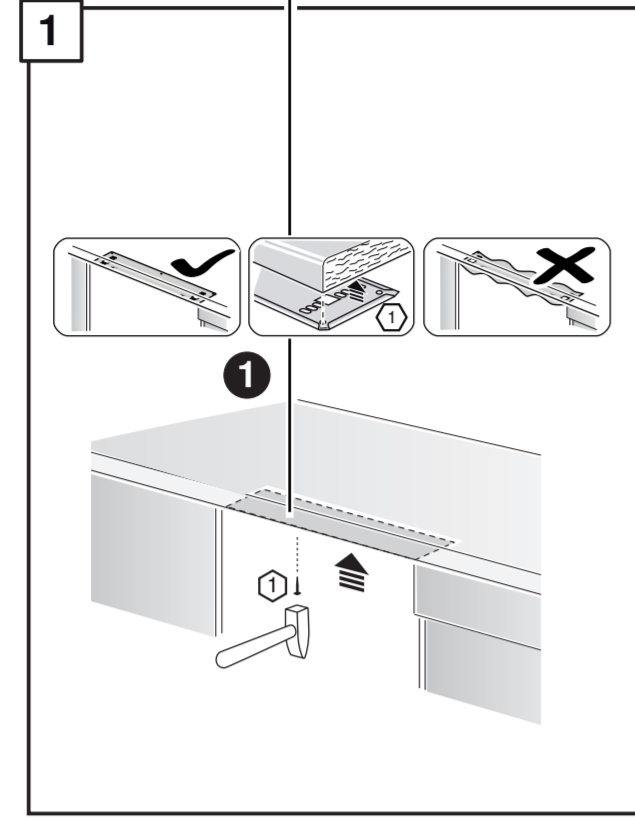
9001 238 037 (9608) GV 640 Voll-H - 81,5 cm - m. GS - 39 db

- de** Montageanleitung
 *) über Kundendienst erhältlich
en Installation instructions
 *) Available from customer service
fr Notice de montage
 *) Disponible par le biais du service après-vente
nl Montagevoorschrift
 *) Tegen meerprijs bij de Servicedienst verkrijgbaar
it Istruzioni per il montaggio
 *) Disponibile presso il servizio assistenza clienti
el Οδηγίες τοποθέτησης
 *) Διαθέσιμα από την υπηρεσία τεχνικής συμπεριφοράς πελατών
es Instrucciones de montaje
 *) Se puede adquirir a través del Servicio de Asistencia Técnica Oficial de la marca
pt Instruções de montagem
 *) Pode ser adquirido nos nossos Serviços Técnicos
sv Monteringsanvisning
 *) kan fås via Service

- tr** Montaj kılavuzu
 *) Yetkili servis üzerinden alınabilir
ru Инструкция по монтажу
 *) Можно получить в сервисном центре
cs Montážní návod
 *) K dispozici přes servisní službu
no Monteringsanvisning
 *) fåes hos kundeservice
pl Asemunuszyje
 *) Sałatavissa huoltopalvelusta
da Monteringsvejledning
 *) Kan købes hos serviceafdelingen
fi Instruktioa montau
 *) Do uzyskania w punkcie serwisowym
hu Szerelési utasítás
 *) A vevőszolgálaton keresztül kapható
uk Упутa за монтажу
 *) може дістати код служби обрiвання

- mk** Упутство за монтажа
 *) Се добиава преку службата за купаваи
sl Navodilo za montažo
 *) Lahko nabavite v servisni službi
sr Упутство за монтажу
 *) Може се набавити преко сервисне службе
et Monteerimisjuhend
 *) Kõige klienditeeninduselt
lv Montāvimo instrukcija
 *) Ja galima gauti klientu aptarnavimo servise
lv Montāžas pamācība
 *) Var saņemt servisa dienestā
sk Návod na montáž
 *) Dostanete v službe zákazníkom
cz Udhžues při montáži
 *) Sigurohet nábjmjet servísit
bs Uputa za montažu
 *) Može se dobiti preko servisne službe

- fa** راهنمای مونتاژ
 *) از مرکز خدمات پس از فروش تهیه فرمایید
ar تعليمات التركيب
 *) يمكن طلبها من مراكز خدمة العملاء
ko 설치 설명서
 *) 고객센터 센터에서 구입 가능
zh 安裝說明書
 *) 可向售後服務站索取
ru Инструкция к монтажу
 *) Можно отримати через сервісний центр
ro Instrucțiune de montaj
 *) obținabilă la serviciul pentru clienți
id Instruksi Pemasangan
 *) bisa didapatkan melalui Customer Service
uk Сервіс калімет керуєт орґанізація алуна жатды
 *) Сервіс калімет керуєт орґанізація алуна жатды

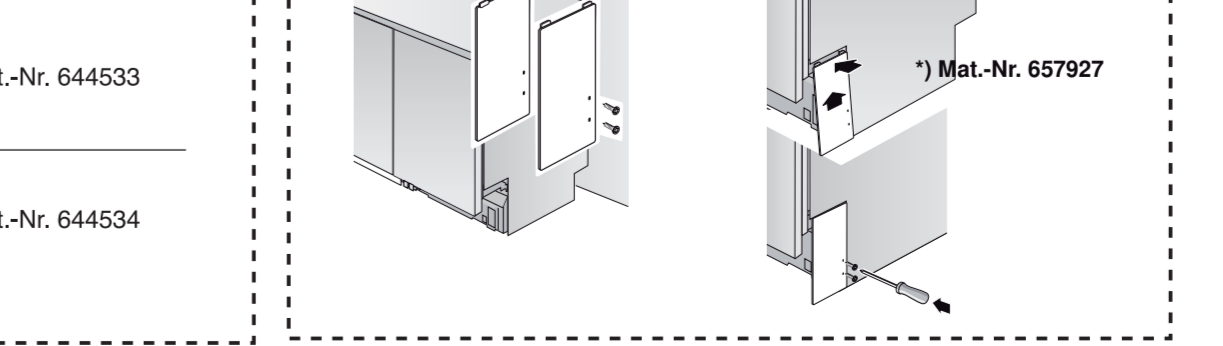
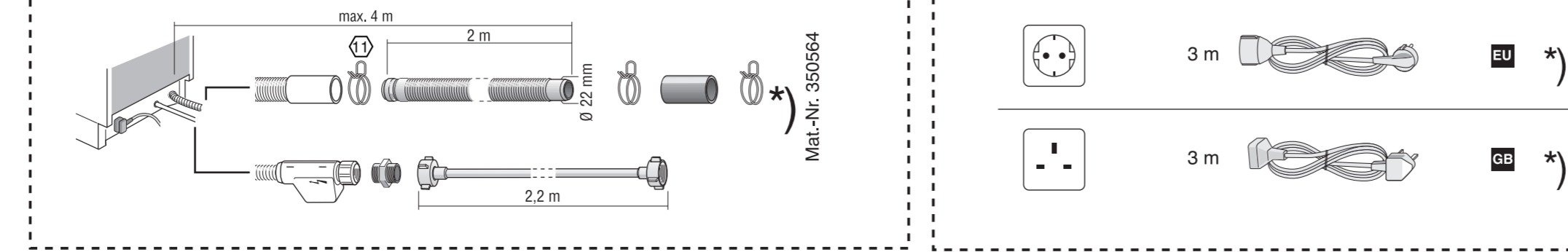
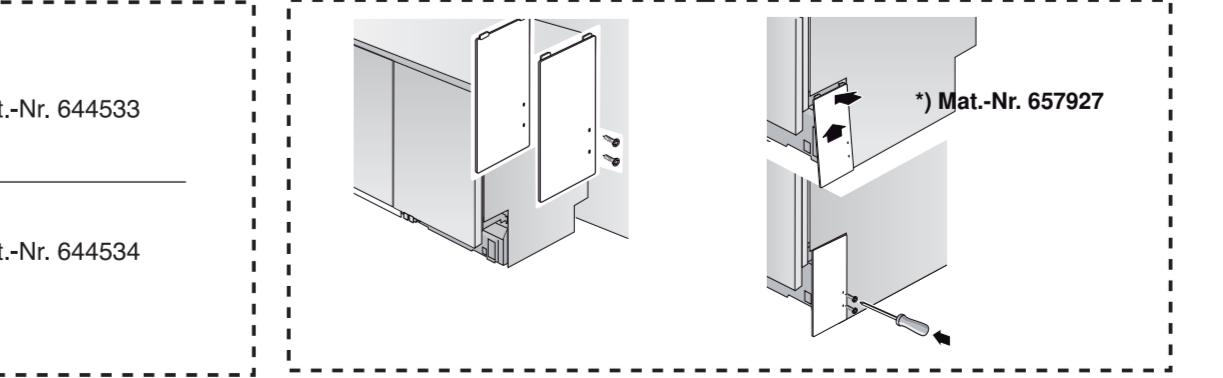
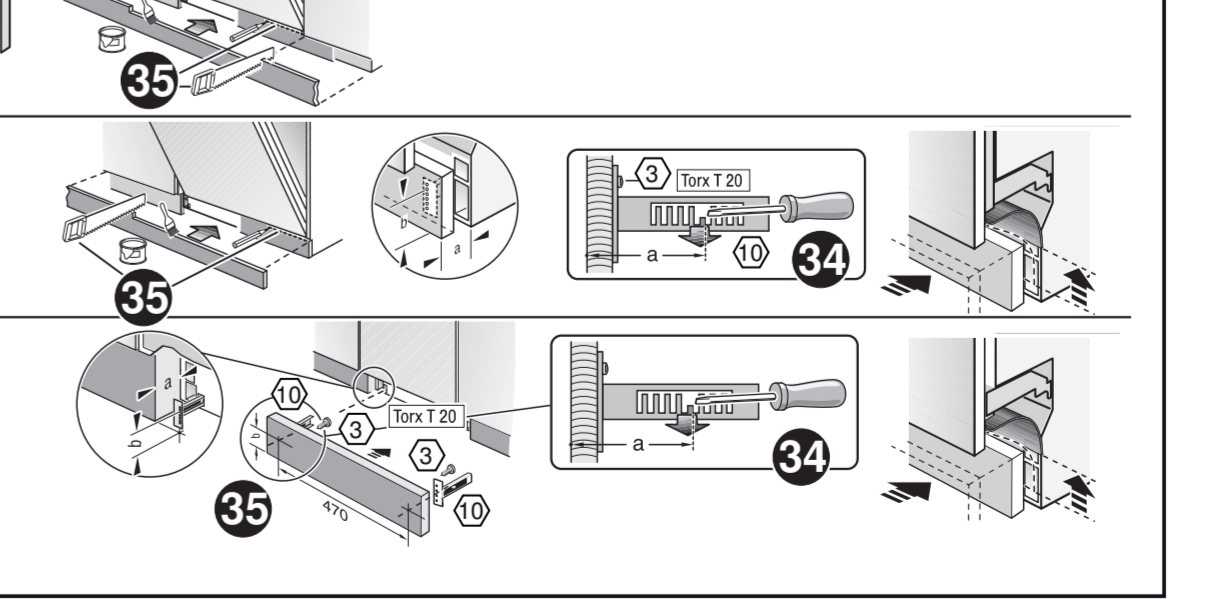
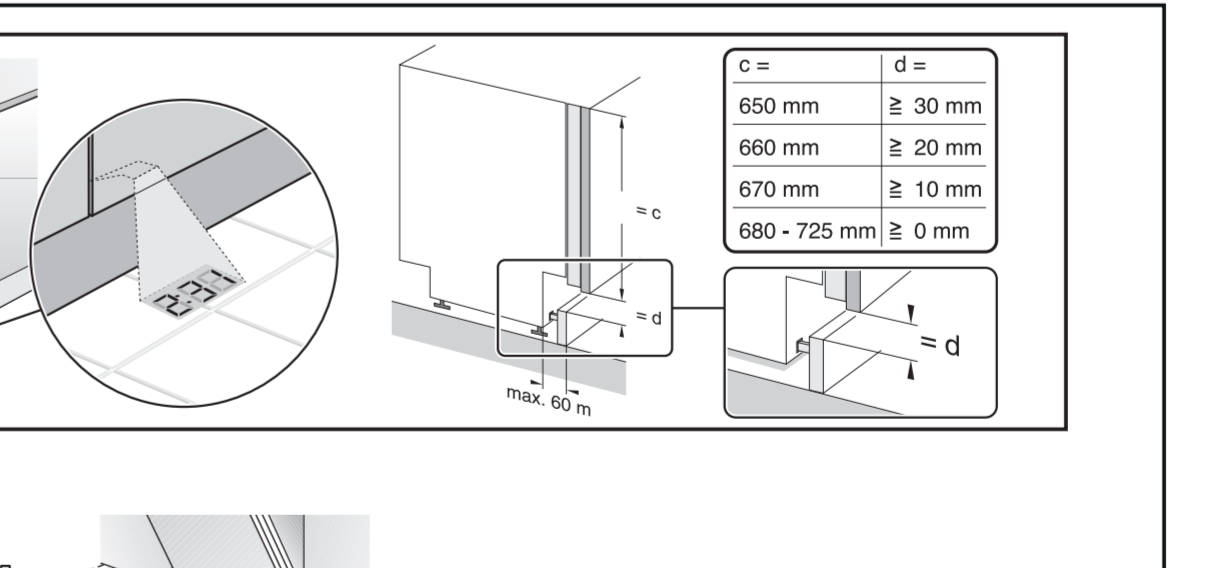
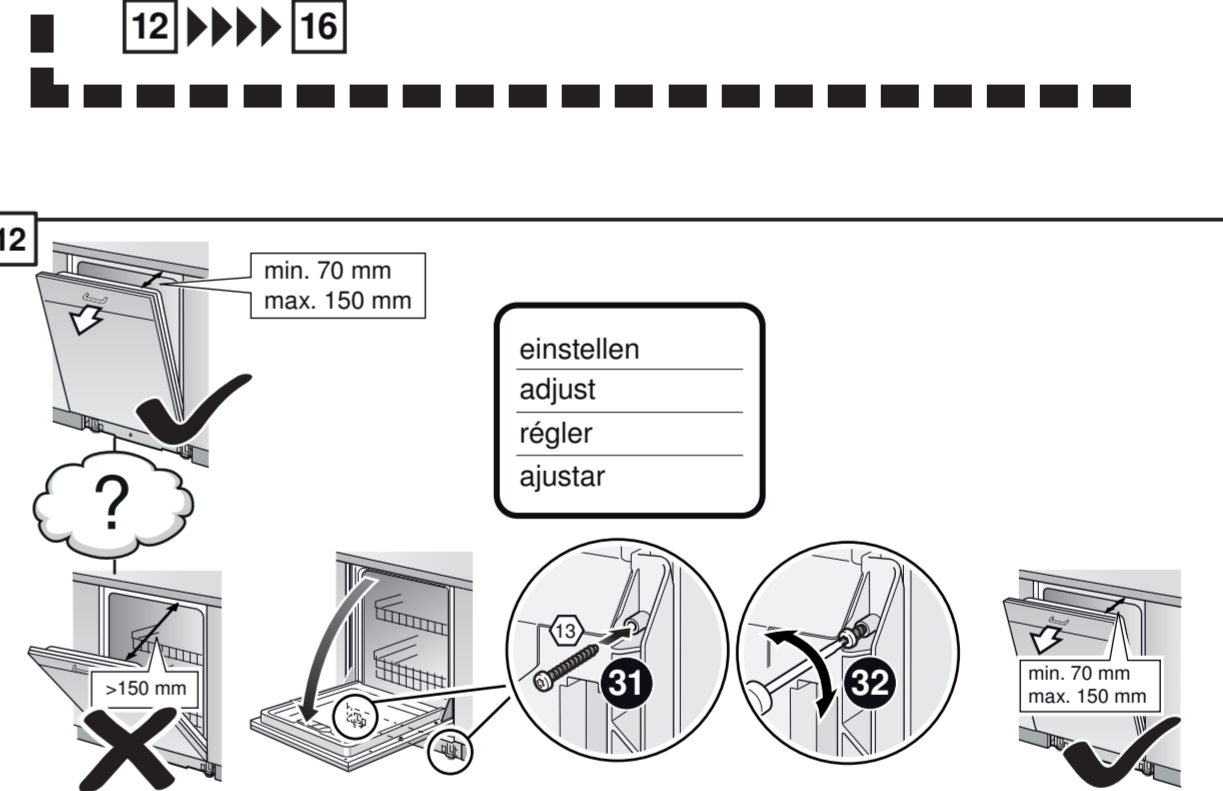
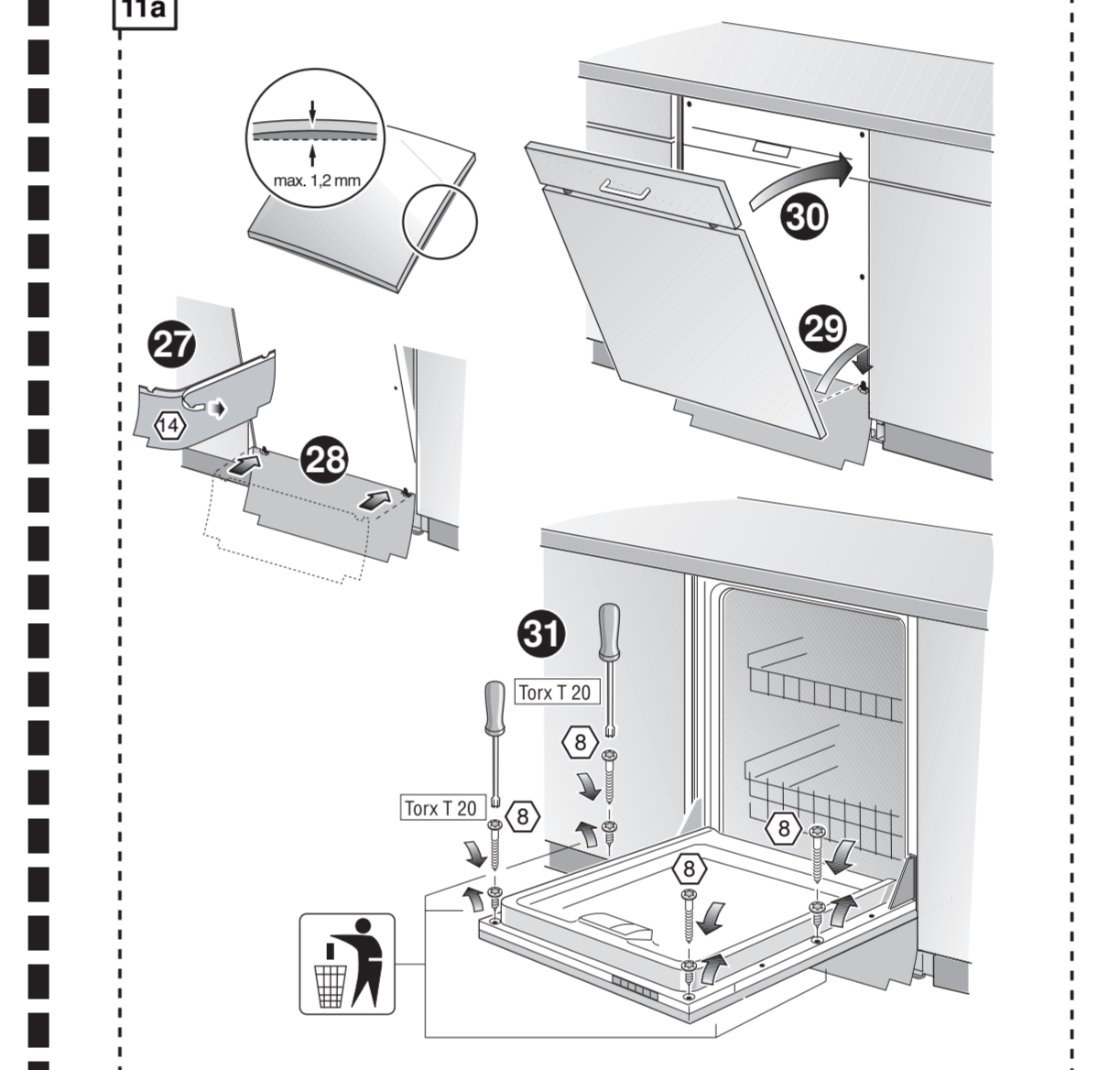
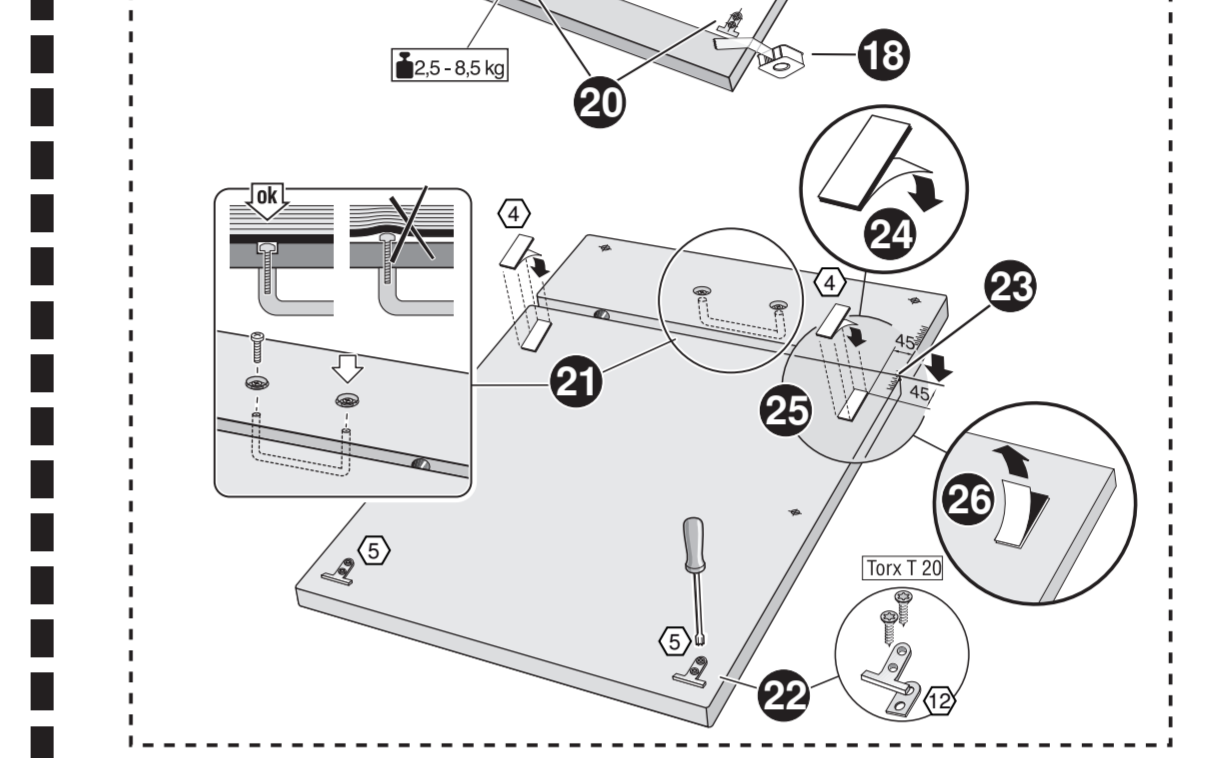
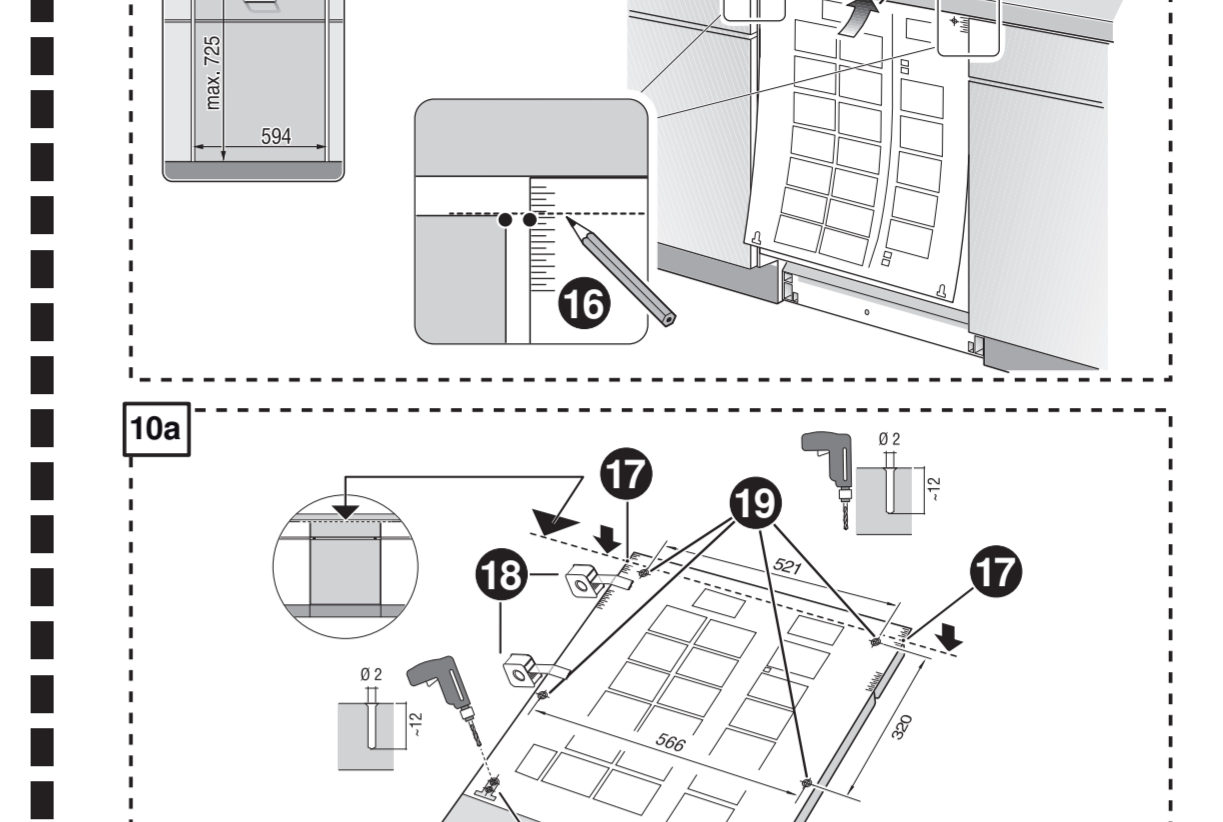
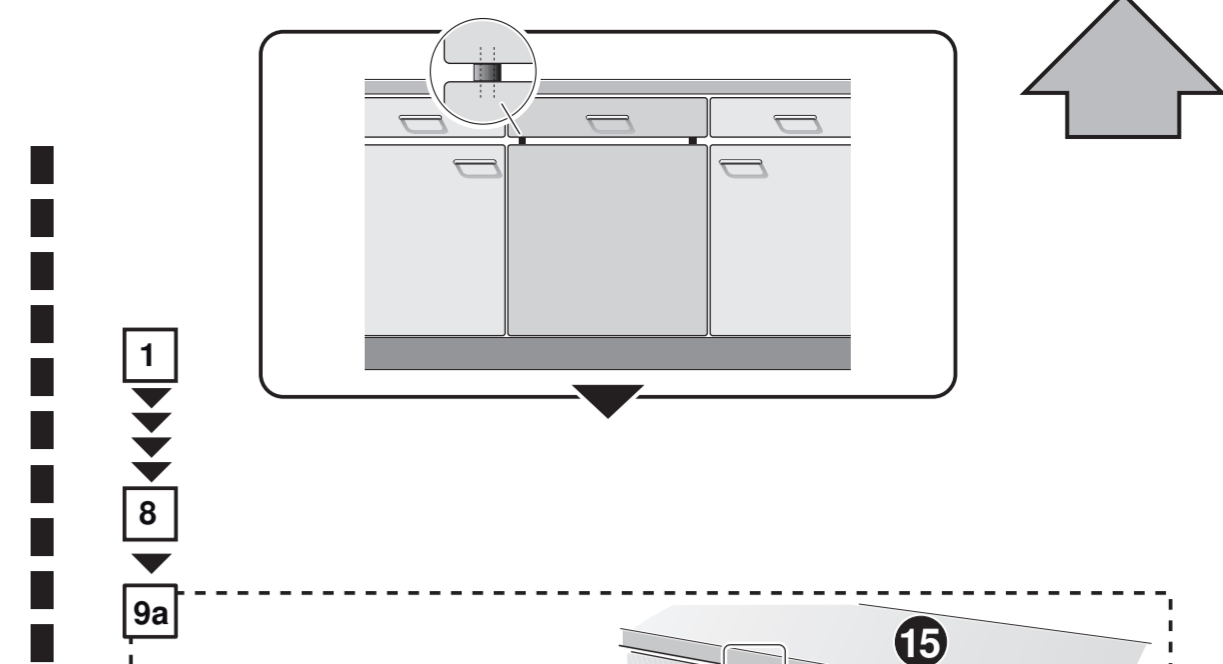
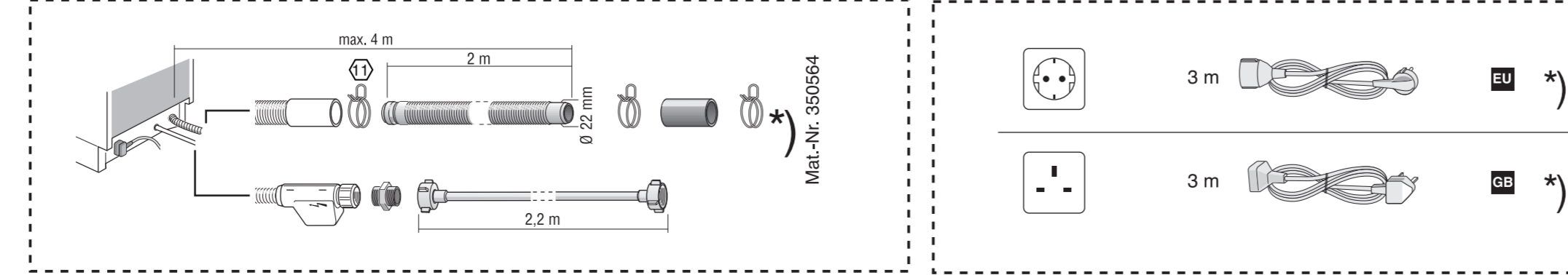
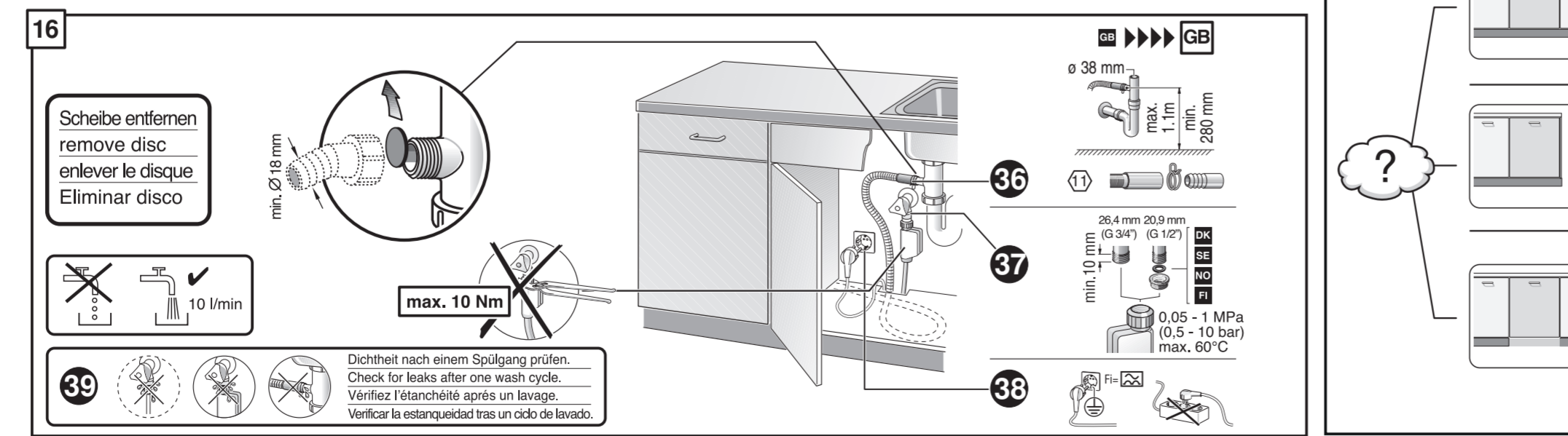
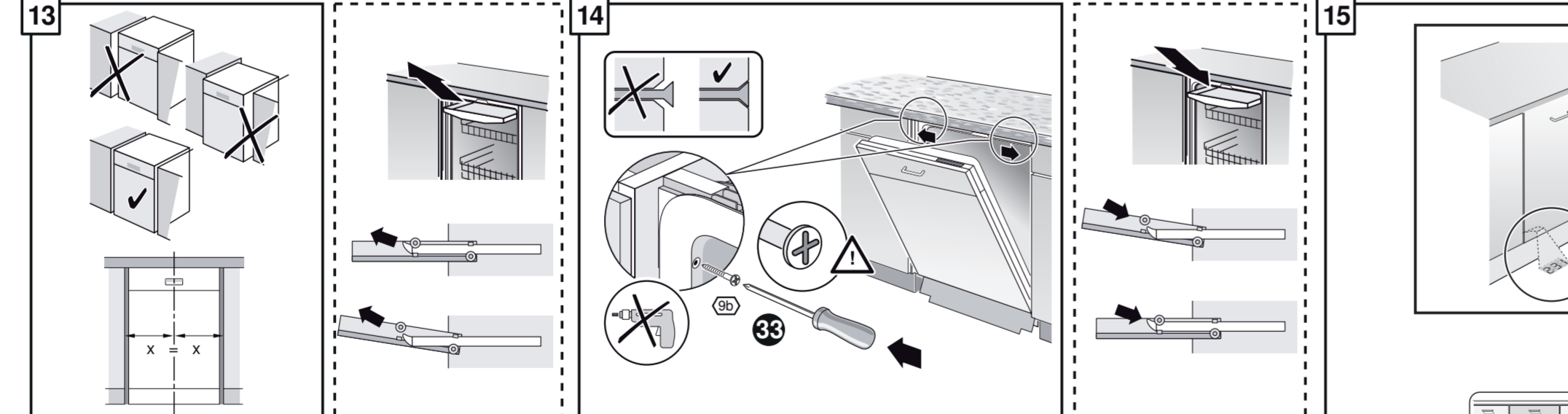
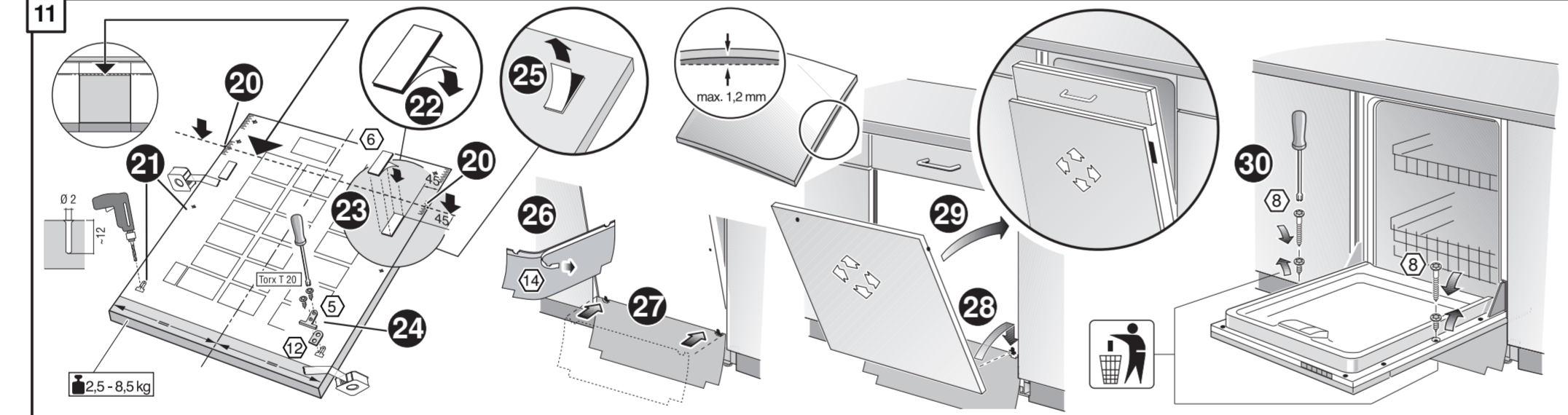
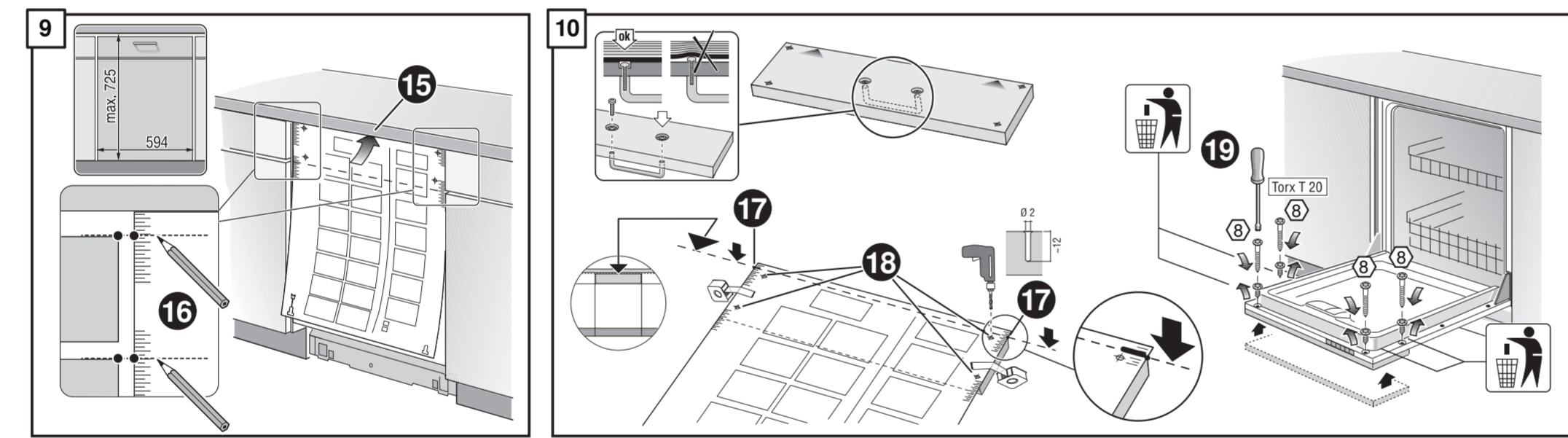
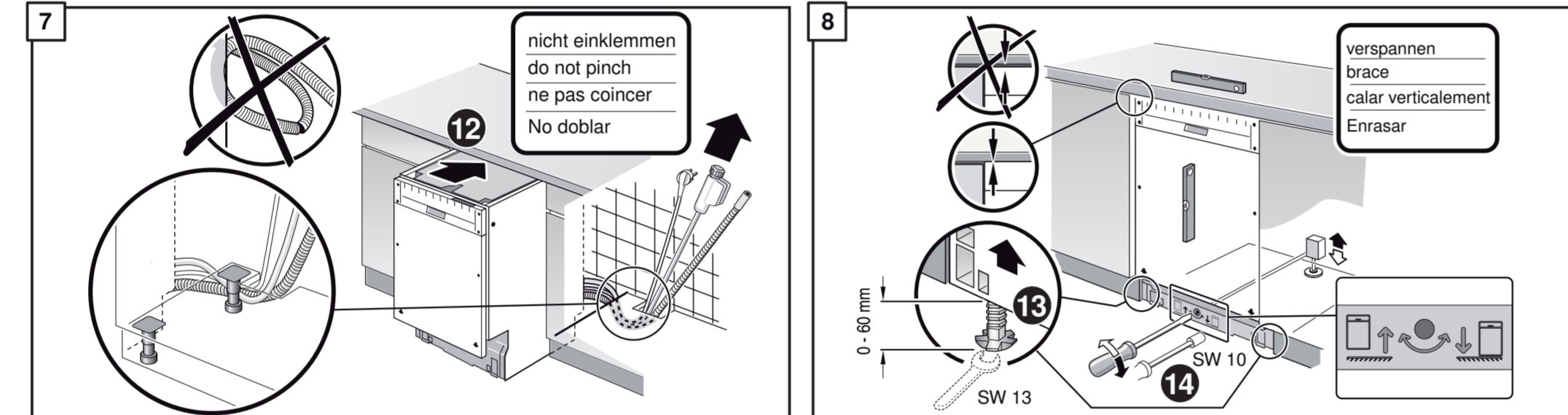
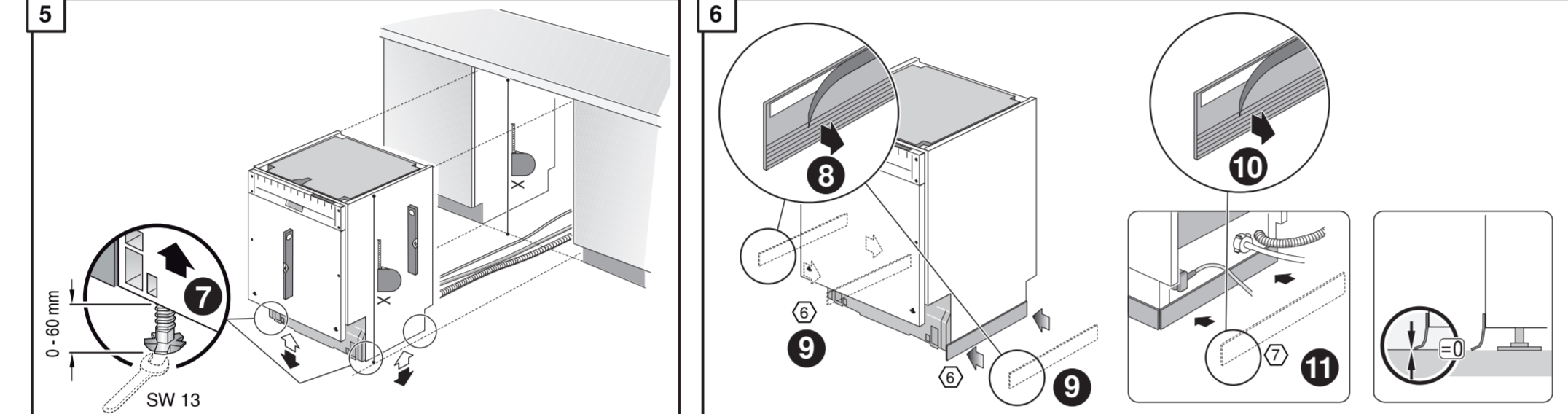
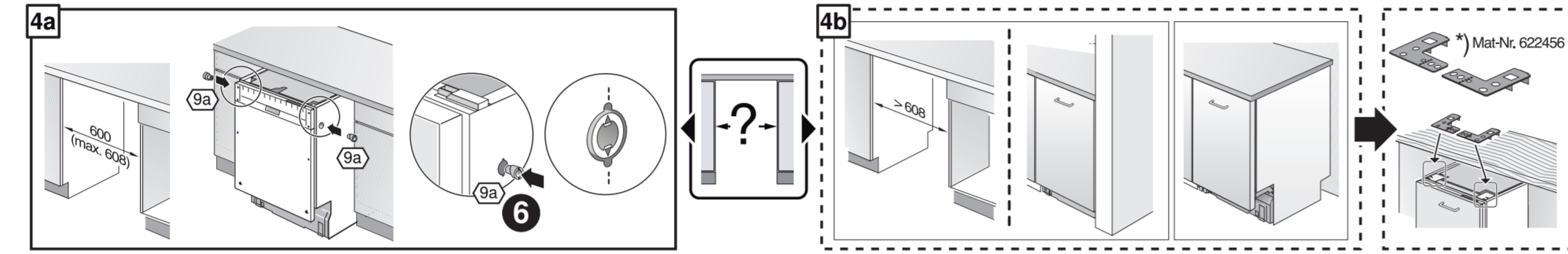
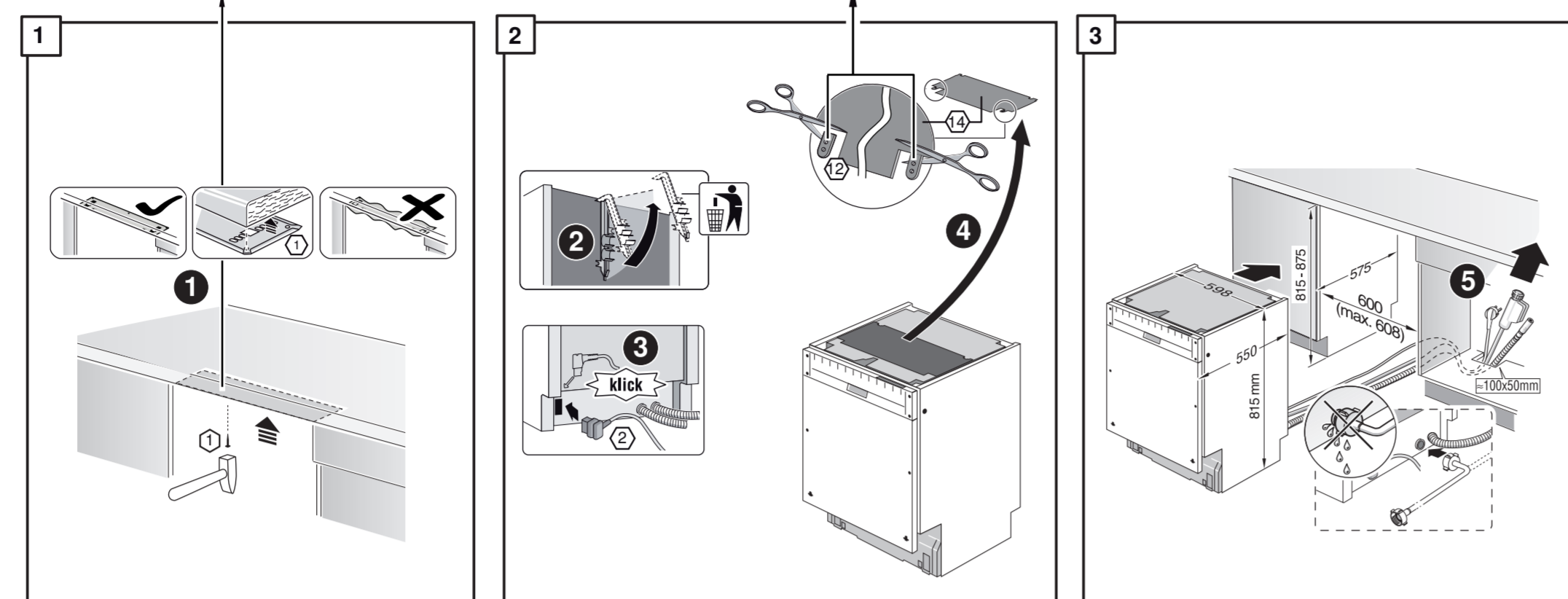
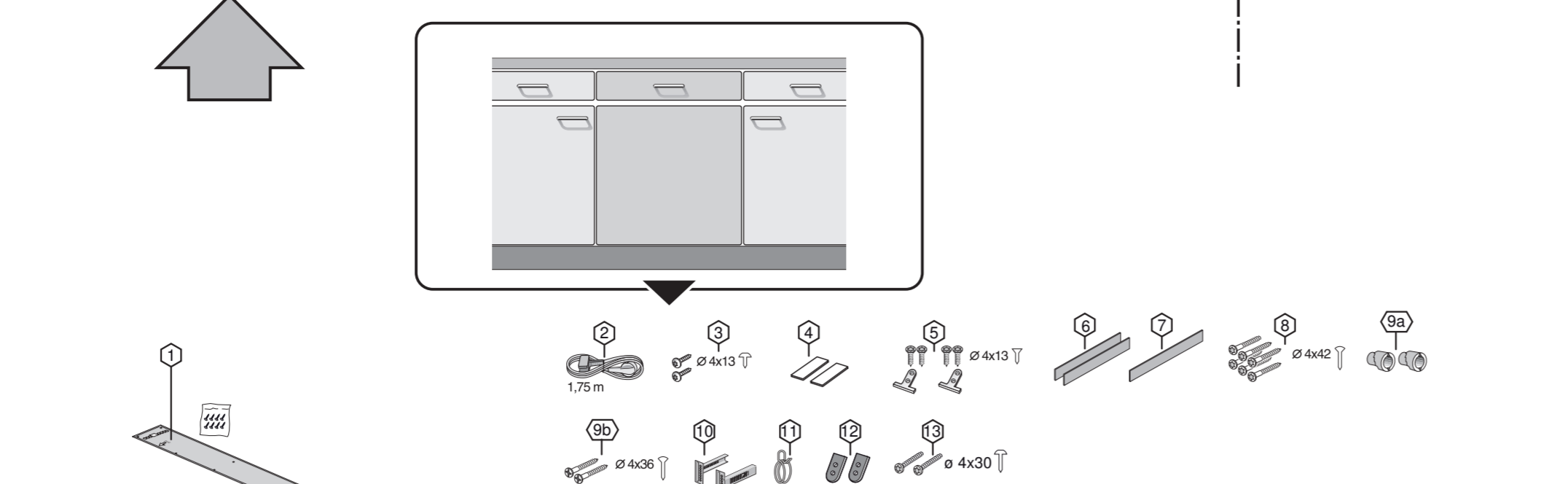
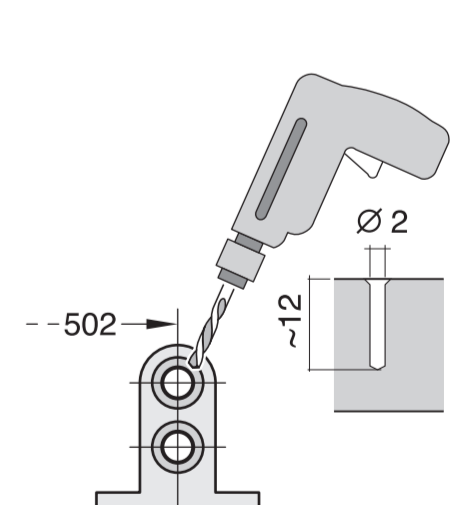
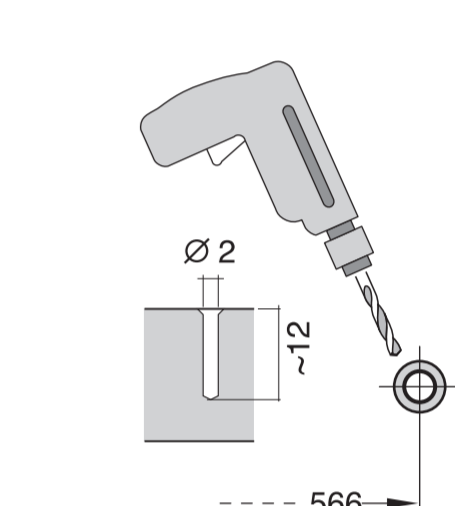
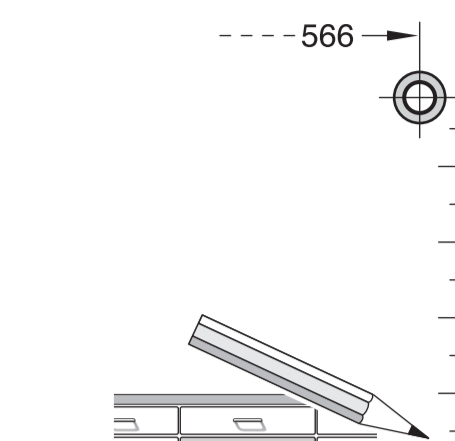
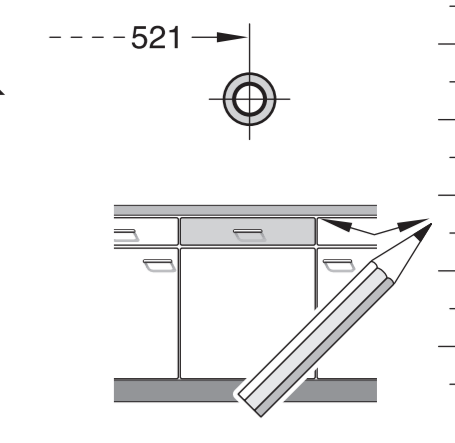
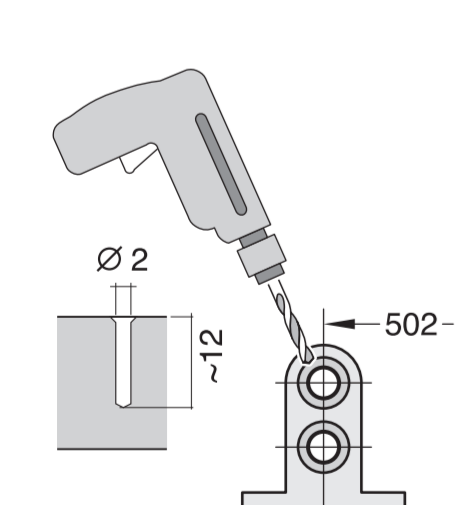
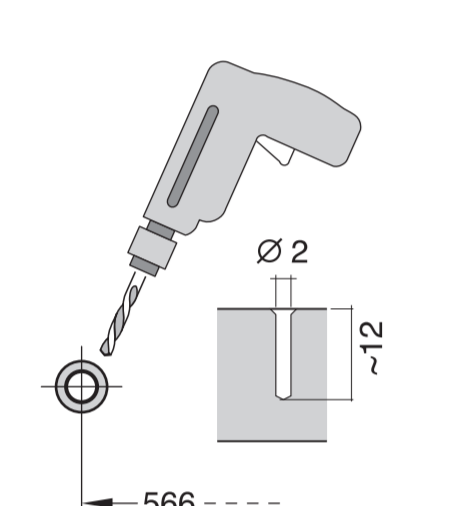
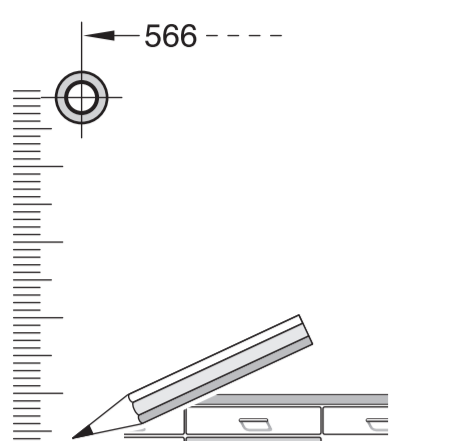
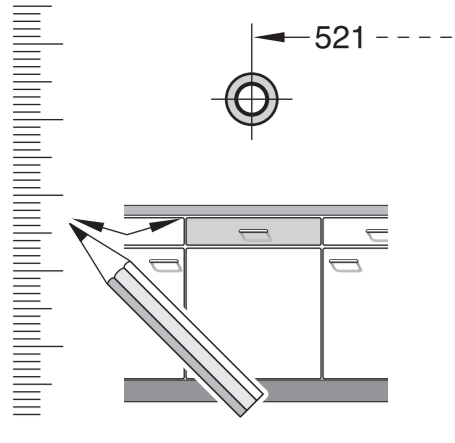


c =	d =
650 mm	≥ 30 mm
660 mm	≥ 20 mm
670 mm	≥ 10 mm
680 - 725 mm	≥ 0 mm

Scheibe entfernen
 remove disc
 enlever le disque
 Eliminar disco

Dichtheit nach einem Spülgang prüfen.
 Check for leaks after one wash cycle.
 Vérifier l'étanchéité après un lavage.
 Verificar la estanqueidad tras un ciclo de lavado.

Mat.-Nr. 350564
 Mat.-Nr. 644533
 Mat.-Nr. 644534
 Mat.-Nr. 657927



3 m EU *) Mat.-Nr. 644533

3 m GB *) Mat.-Nr. 644534

Scheibe entfernen
remove disc
enlever le disque
Eliminar disco

Dichtheit nach einem Spülgang prüfen.
Check for leaks after one wash cycle.
Vérifiez l'étanchéité après un lavage.
Verifique la estanqueidad tras un ciclo de lavado.

nicht einklemmen
do not pinch
ne pas coincer
No doblar

verspannen
brace
calar verticalement
Enrasar

min. 70 mm
max. 150 mm

einstellen
adjust
régler
ajustar

c =	d =
650 mm	≥ 30 mm
660 mm	≥ 20 mm
670 mm	≥ 10 mm
680 - 725 mm	≥ 0 mm