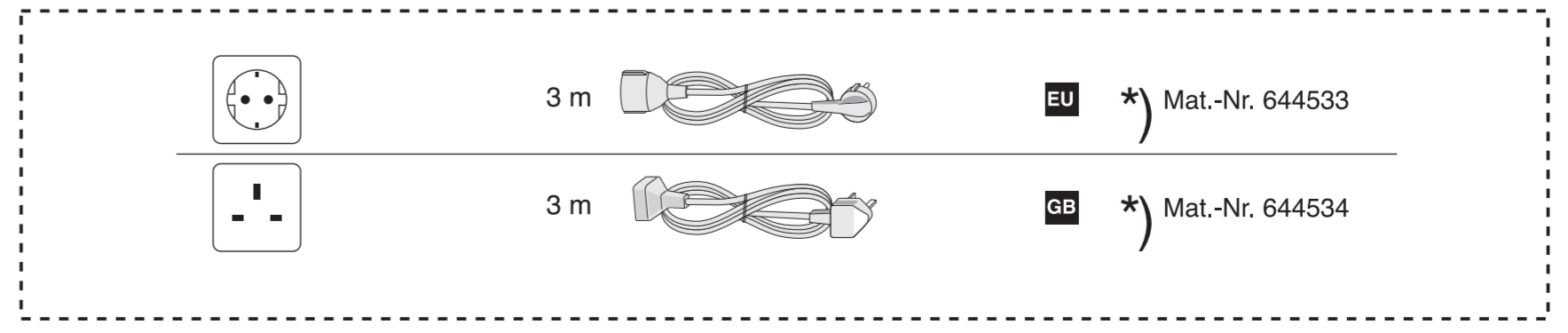
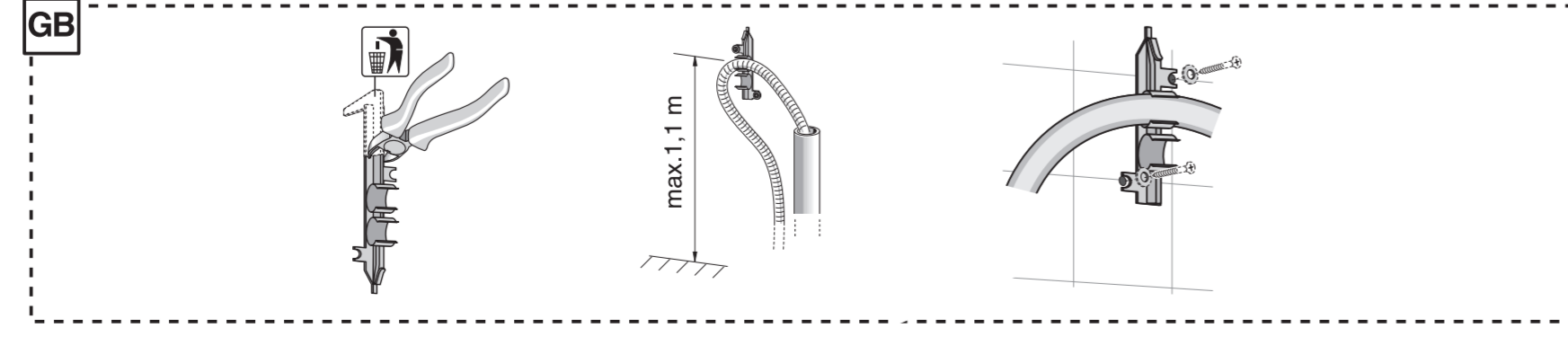
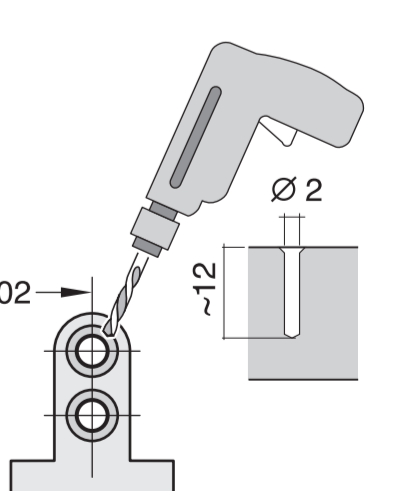
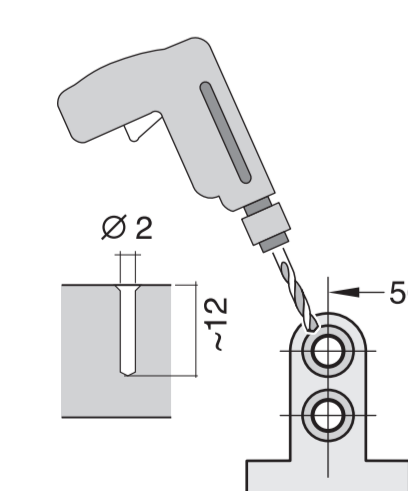
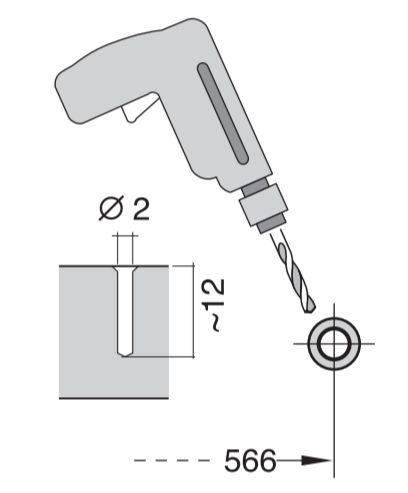
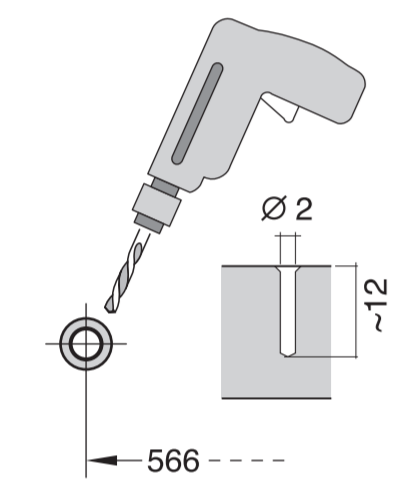
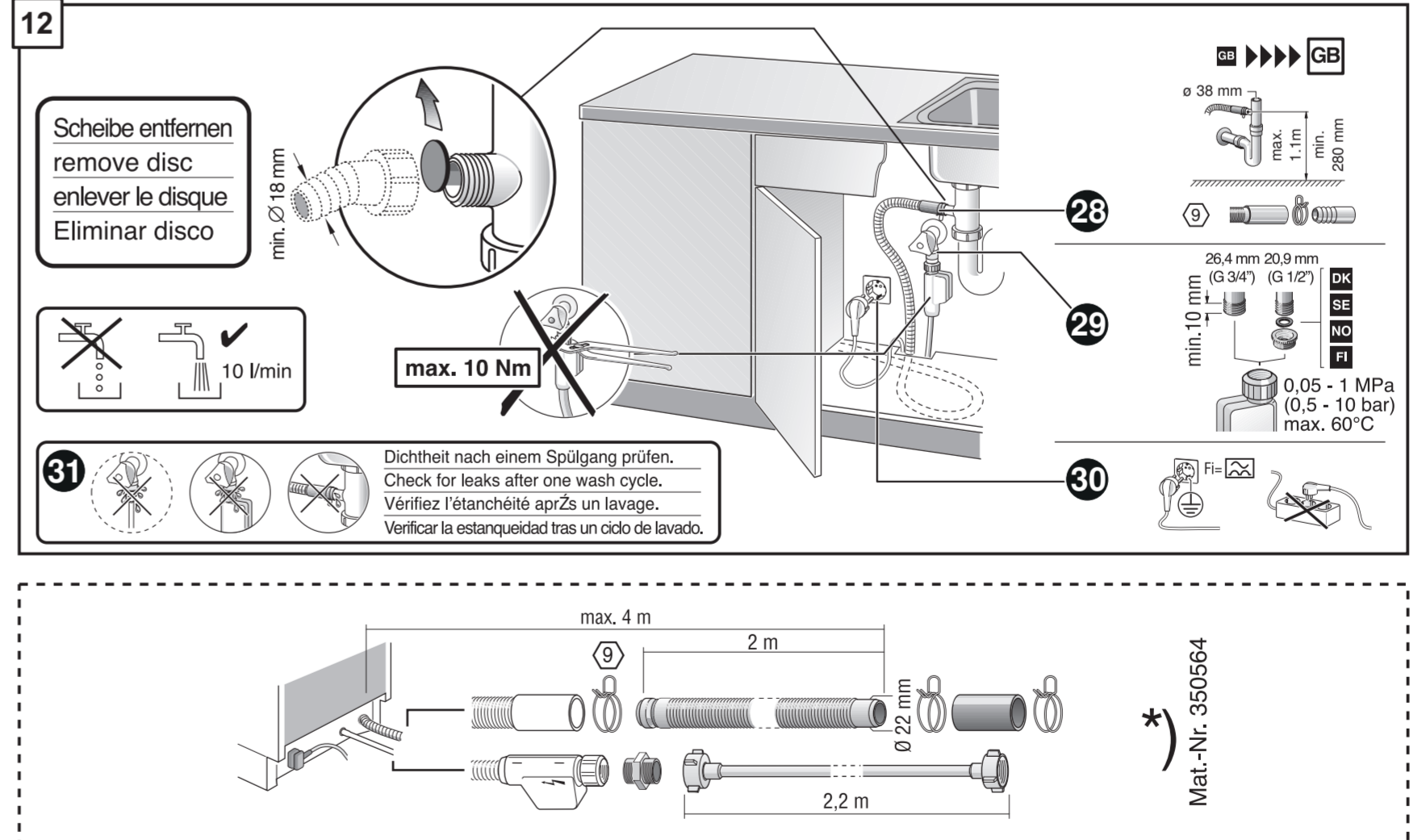
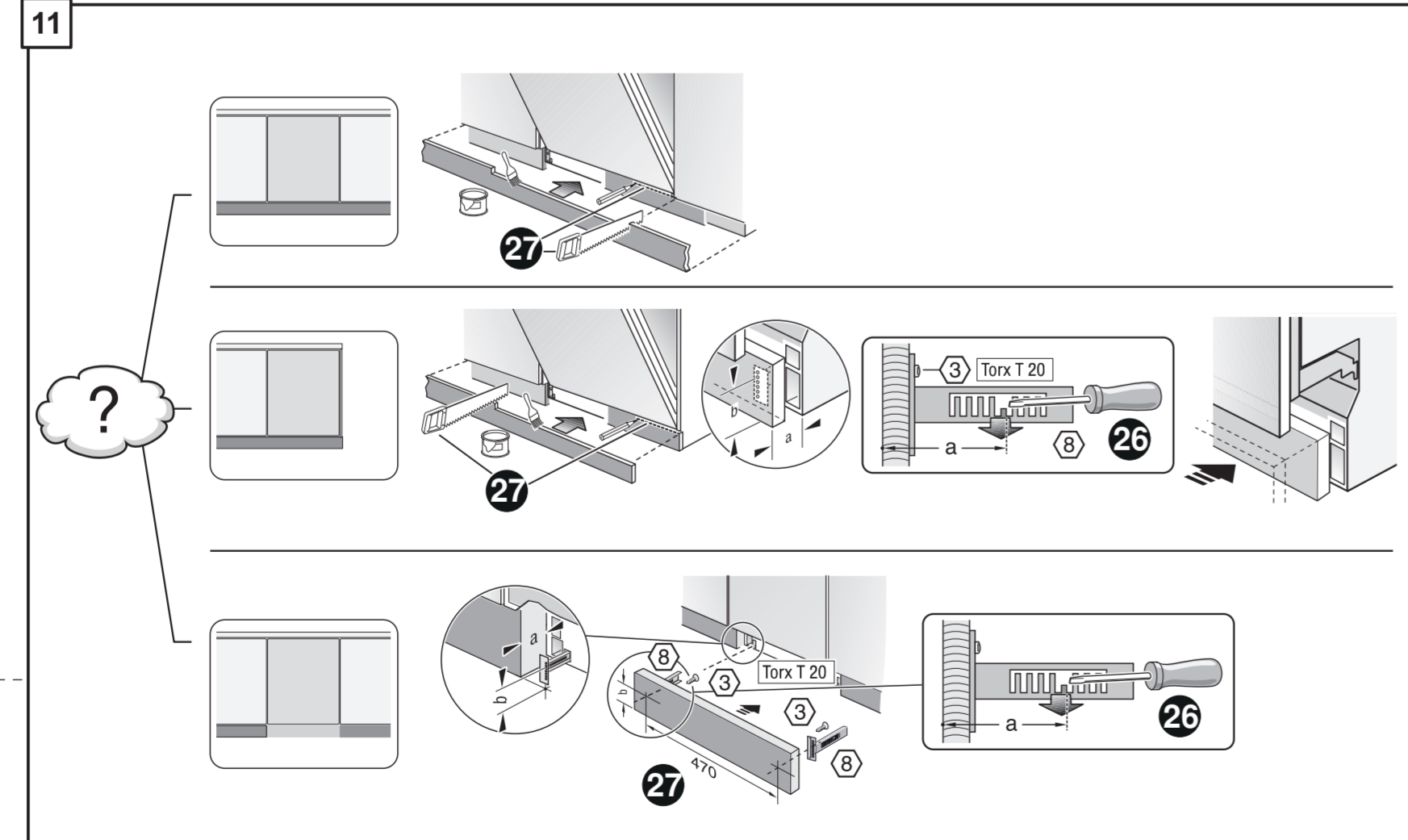
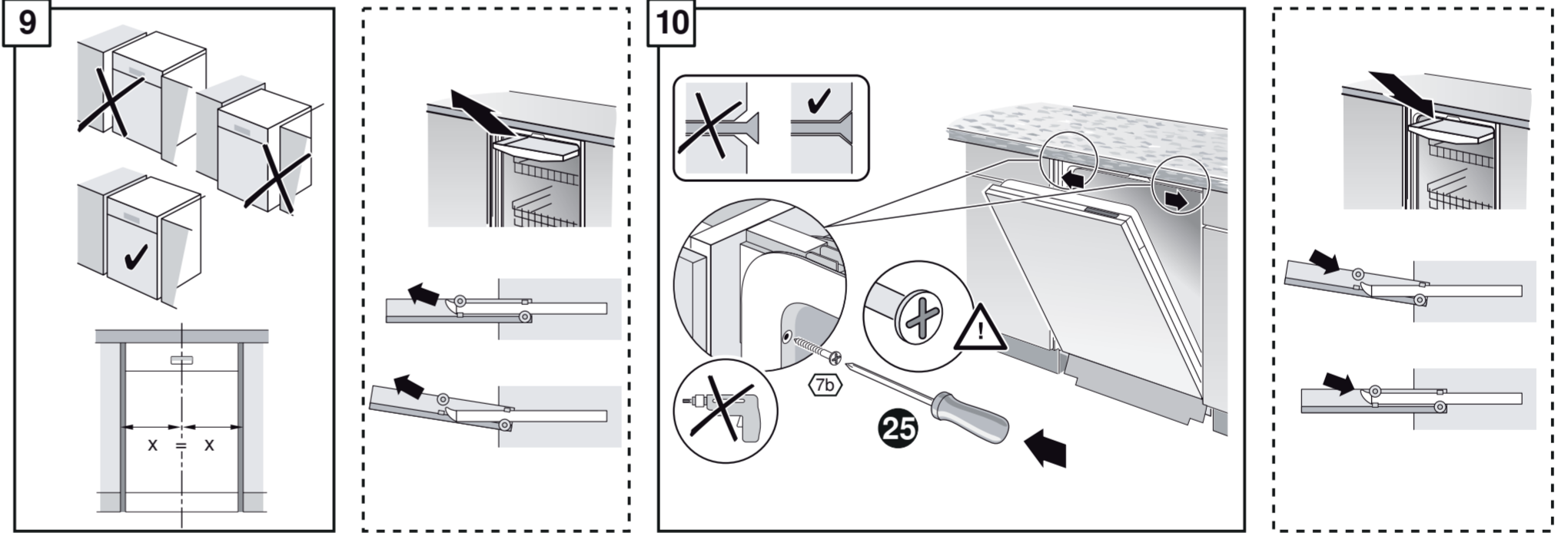
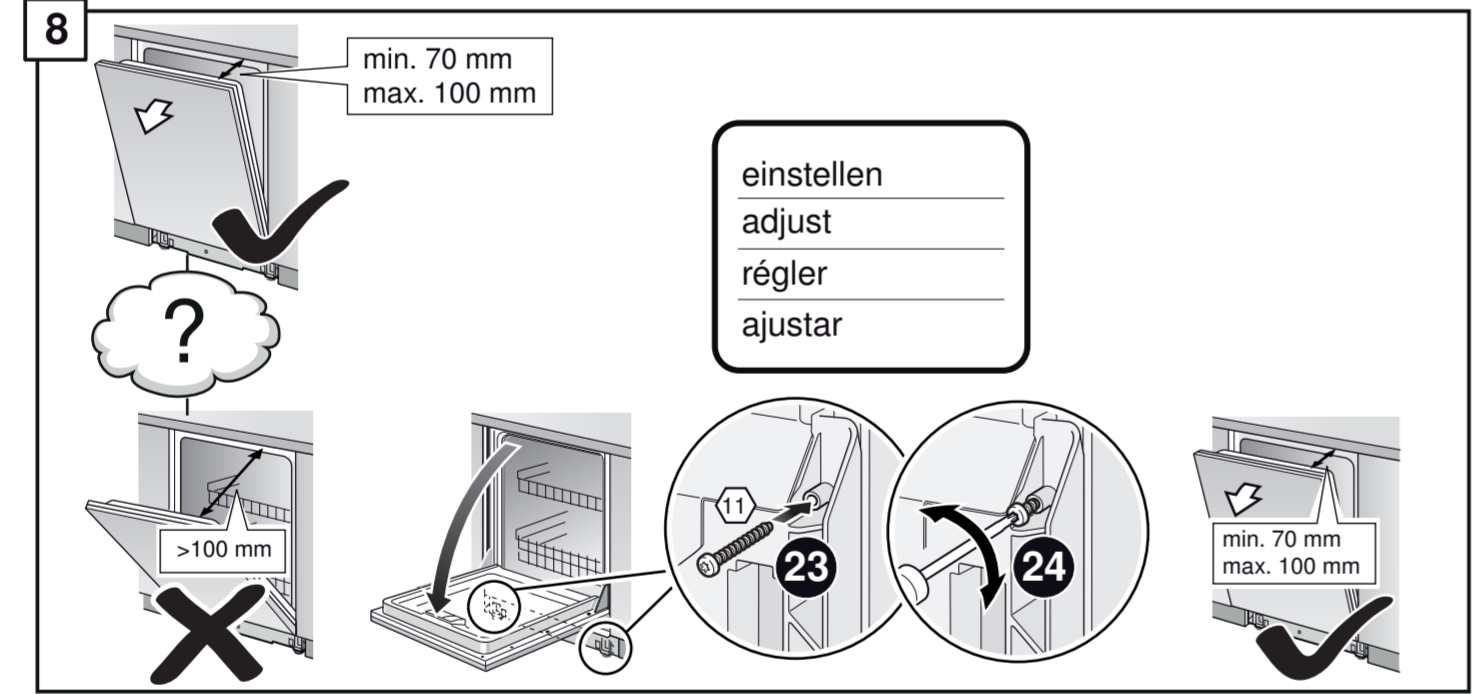
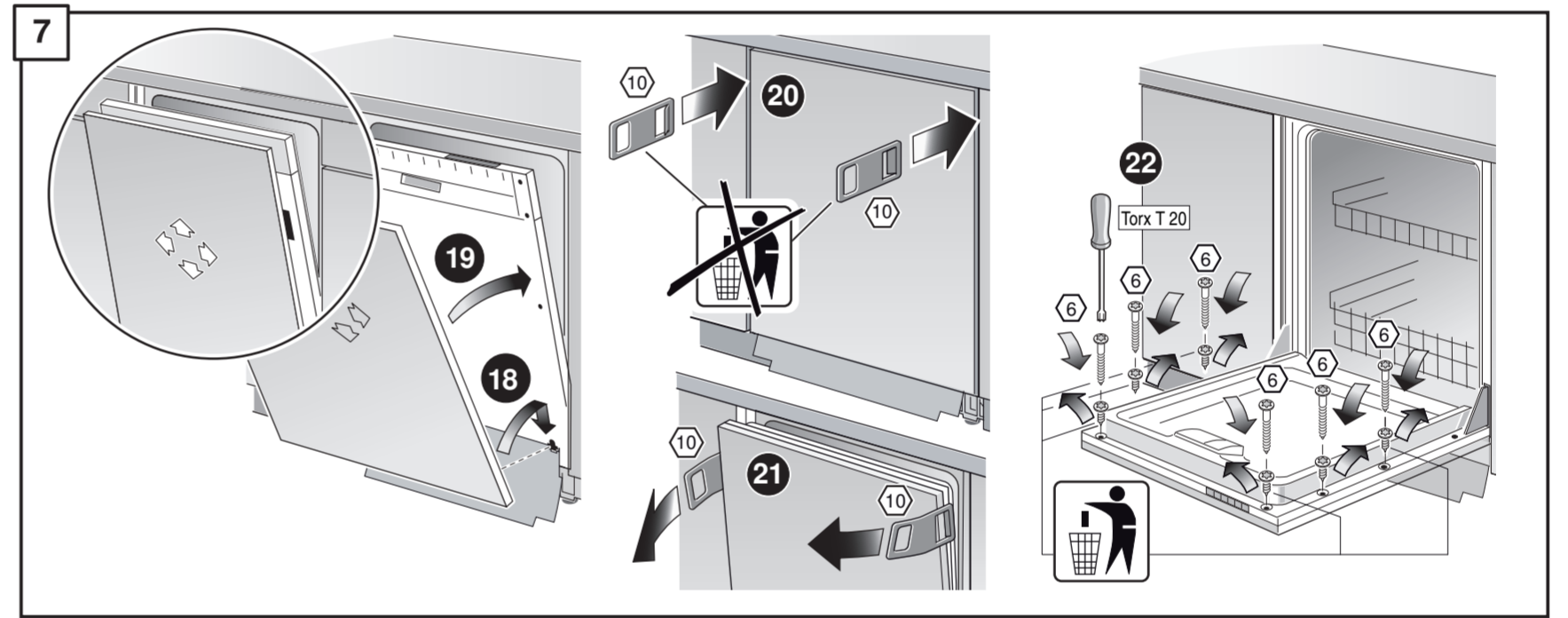
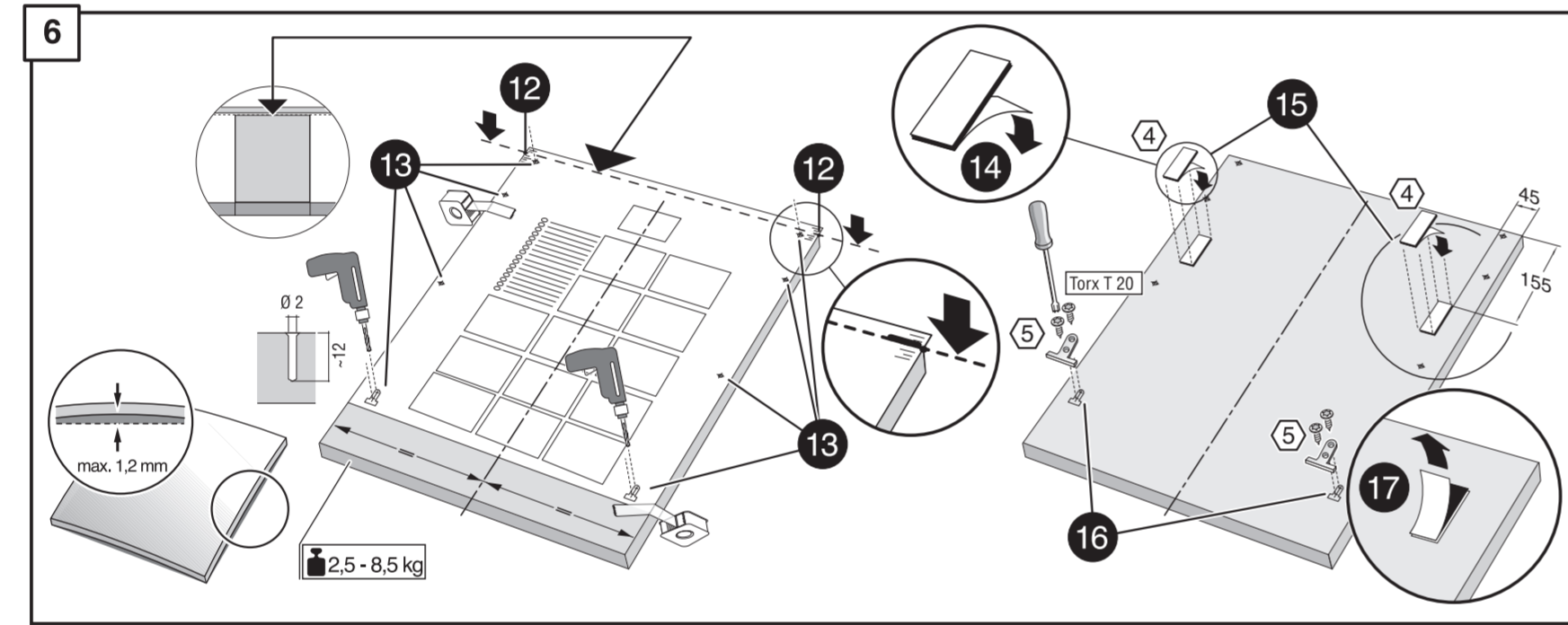
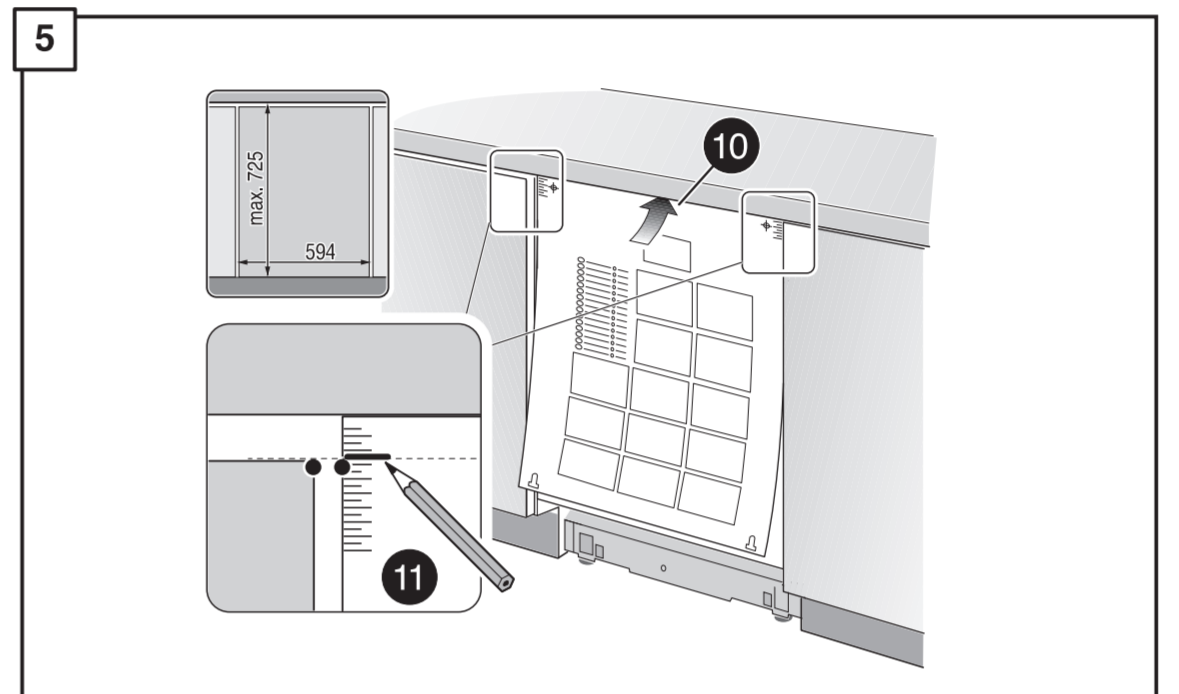
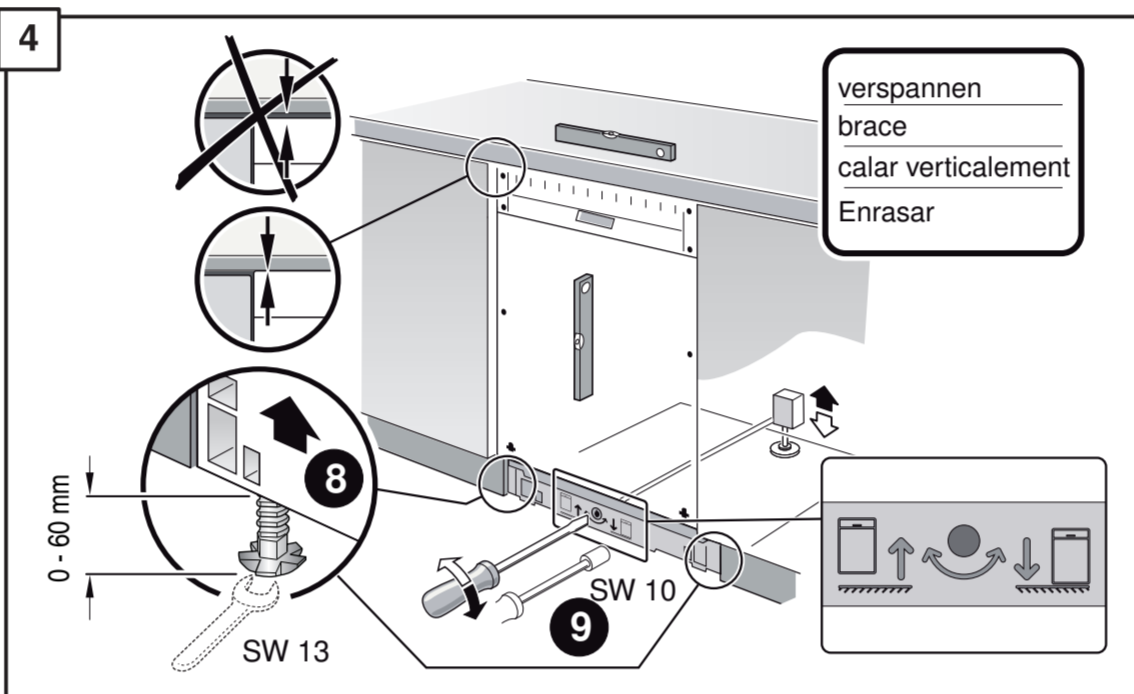
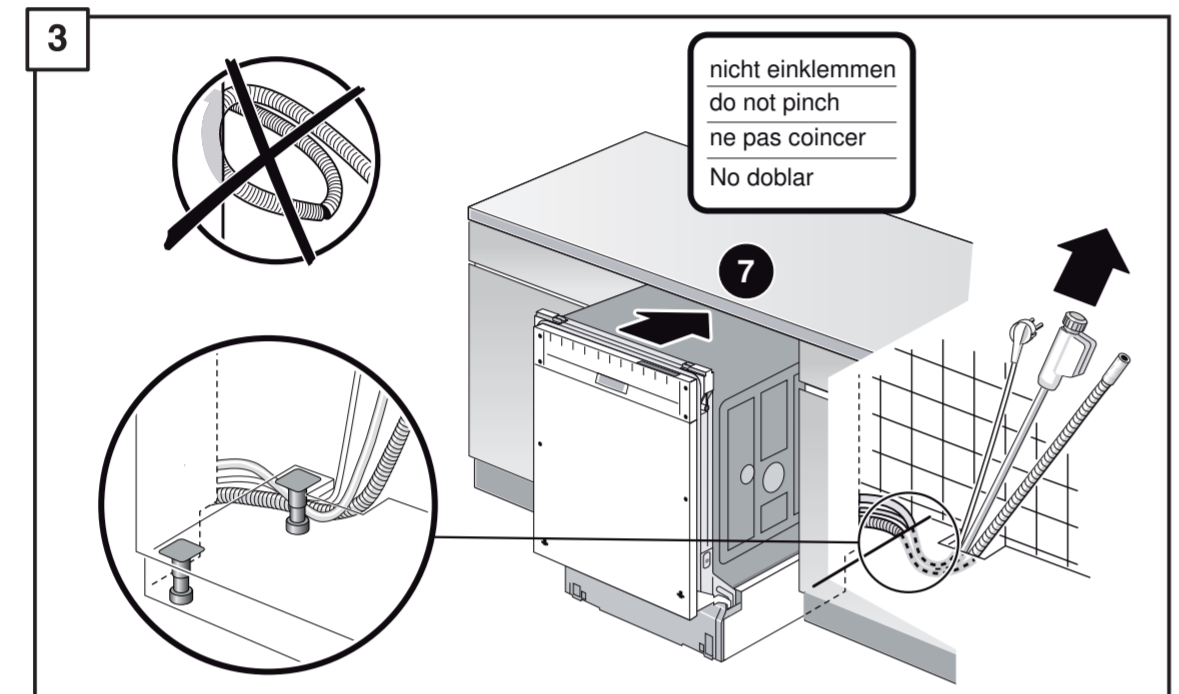
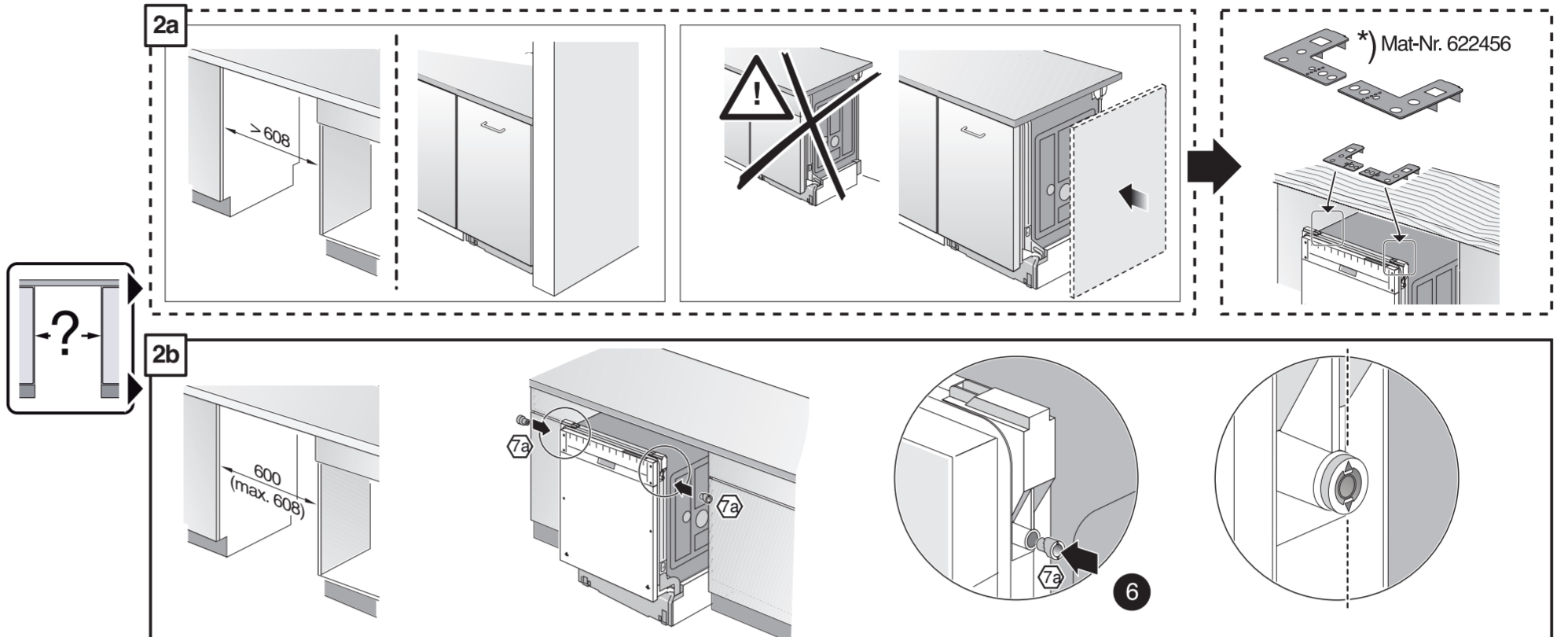
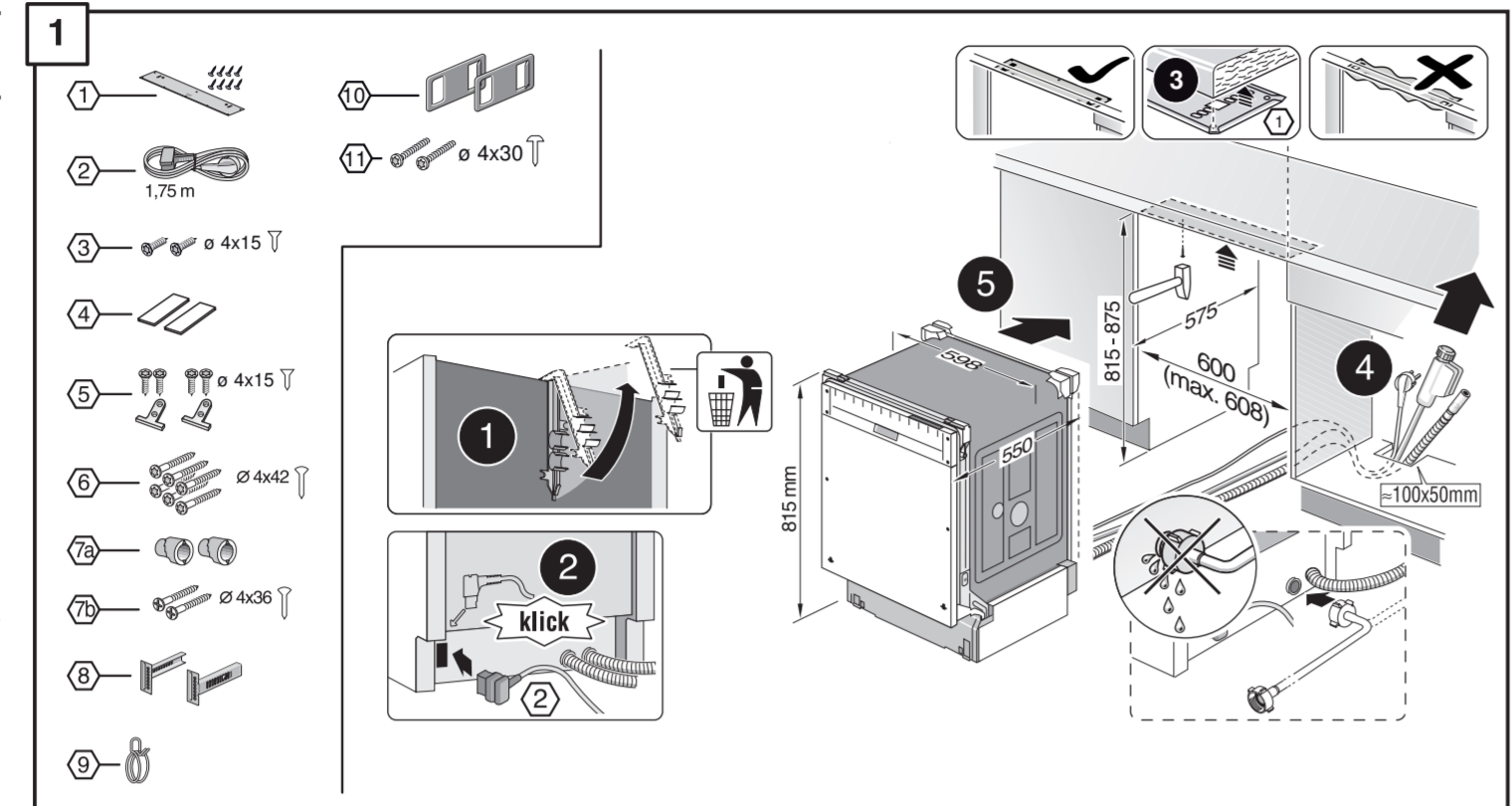
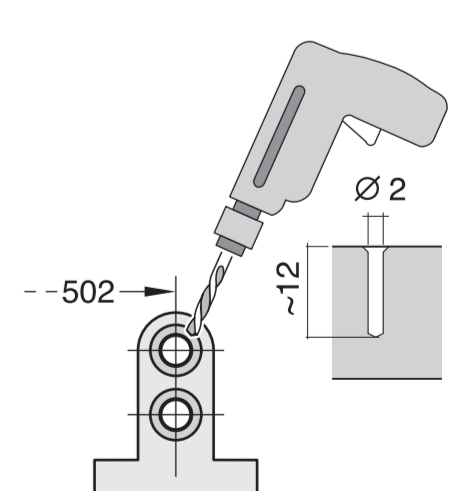
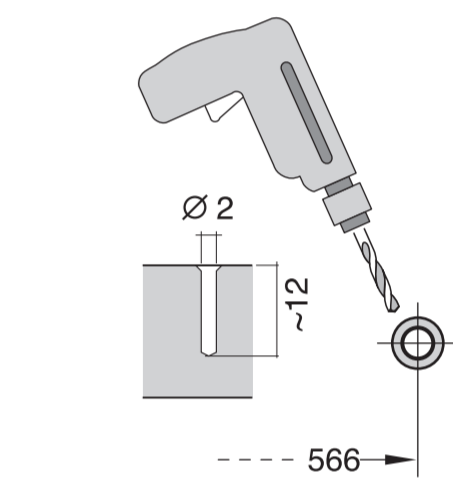
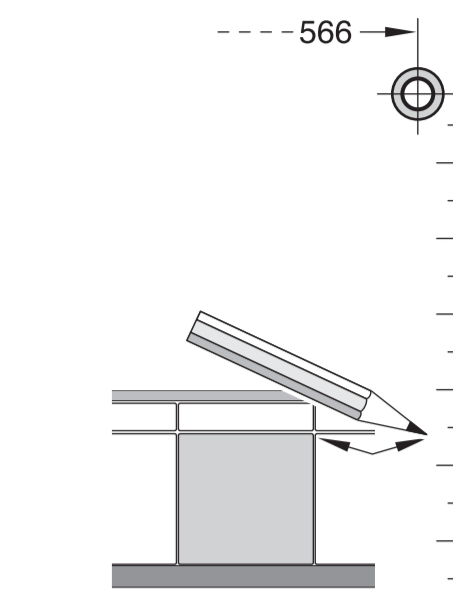
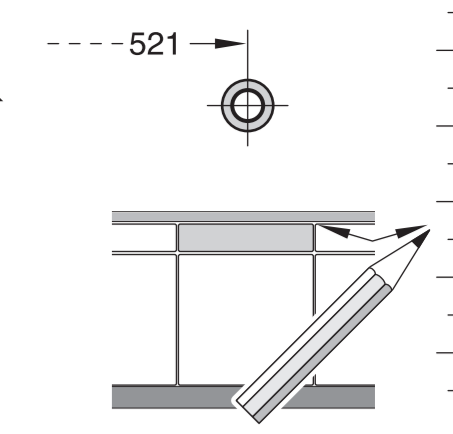
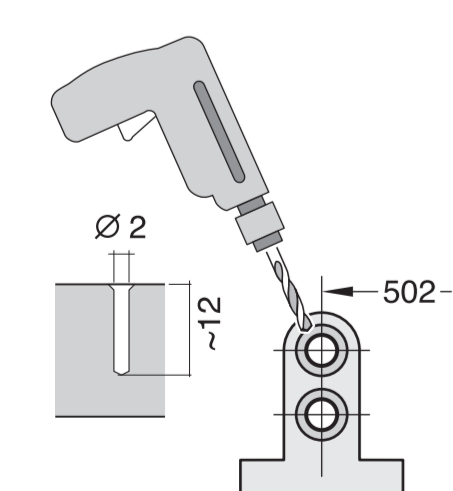
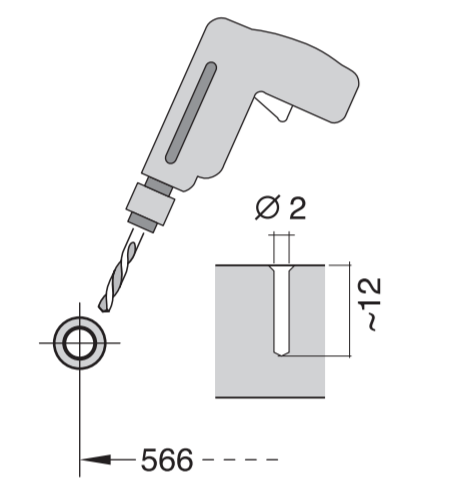
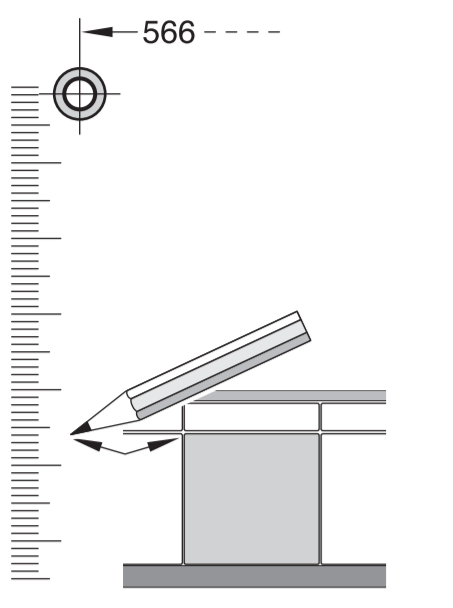
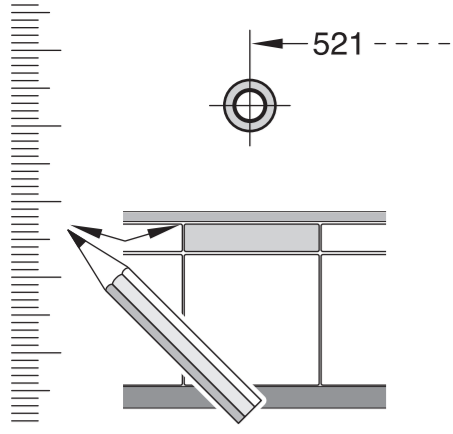


- |   |   |   |   |
|---|---|---|---|
| <b>de</b> Montageanleitung<br>*) Über Kundendienst erhältlich<br><b>en</b> Installation instructions<br>*) Available from customer service<br><b>fr</b> Notice de montage<br>*) Disponible par le biais du service après-vente<br><b>nl</b> Montagevoorschrift<br>*) Tegen meerprijs bij de Servicedienst verkrijgbaar<br><b>it</b> Istruzioni per il montaggio<br>*) Disponibile presso il servizio assistenza clienti<br><b>cs</b> Odbývky: tomoštrony<br>*) Dostupné na objednávku v rámci služby zákaznických služeb<br><b>es</b> Instrucciones de montaje<br>*) Se puede adquirir a través del Servicio de Asistencia Técnica Oficial de la marca<br><b>pt</b> Instruções de montagem<br>*) Pode ser adquirido nos nossos Serviços Técnicos<br><b>sv</b> Monteringsanvisning<br>*) kan fås via Service | <b>tr</b> Montaj kılavuzu<br>*) Yetkili servis üzerinden alınabilir<br><b>ru</b> Инструкция по монтажу<br>*) Можно получить в сервисном центре<br><b>sk</b> Montážni návod<br>*) K dispozícii pŕes servisnú službu<br><b>no</b> Monteringsanvisning<br>*) fåes hos kundeservice<br><b>fi</b> Asennusohje<br>*) Saatavissa huoltopalvelusta<br><b>pl</b> Montażowyjechning<br>*) Kan kabes hos serviceafdelingen<br><b>lv</b> Instrukcija montāžu<br>*) Do uzskāņana v punktie servisovom<br><b>hu</b> Szerelési utasítás<br>*) A vevőszolgálaton keresztül kapható:<br><b>lt</b> Uputa za montažu<br>*) može dobiti kod službe održavanja | <b>mk</b> Упатство за монтажа<br>*) се добива преку службата за купувачи<br><b>sl</b> Navodilo za montažo<br>*) Lahko nabavite v servisni službi<br><b>sq</b> Uputstvo za montažu<br>*) Može se nabaviti preko servise službe<br><b>et</b> Monteerimisjuhend<br>*) Küsige klientiteenindusest<br><b>lv</b> Montāžu instrukcija<br>*) Galima gauti klientu aptarnavimo servise<br><b>lt</b> Montāžas pamācība<br>*) Var saņemt servisa dienestā<br><b>sk</b> Návod na montáž<br>*) Dostanete v službe zákaznikom<br><b>pt</b> Udhæuzes pŕer montim<br>*) Sigurhet nâpŕimjet servisit<br><b>sv</b> Uputa za montažu<br>*) Može se dobiti preko servise službe | <b>fa</b> راهنمای مونتاژ<br>*) از مرکز خدمات پس از فروش تهیه فرمایید<br><b>ar</b> تعليمات التركيب<br>*) يمكن الحصول عليها من مركز خدمة العملاء<br><b>ko</b> 설치 설명서<br>*) 고객센터 센터에서 구입 가능<br><b>zh</b> 安装说明书<br>*) 可向售后服务站索取<br><b>ru</b> Инструкция з монтажу<br>*) Можна отримати через сервисну службу<br><b>pl</b> Instrukcja de montaj<br>*) Obtenabili la serviciul pentru clienti<br><b>tr</b> Intruksi Pemasangan<br>*) bisa didapatkan melalui Customer Service<br><b>kk</b> Іске қосу туралы нұсқаулар<br>*) Сервис қызмет көрсету органдарында алуға жатады |
|---|---|---|---|

GV 640 Voll-I - 81,5 cm k.-SW 9001 209 291 (9611)



- |  |     |  |                              |
|--|-----|--|------------------------------|
|  | 3 m |  | <b>EU</b> *) Mat.-Nr. 644533 |
|  | 3 m |  | <b>GB</b> *) Mat.-Nr. 644534 |



**1**

1 10  
2 1.75 m 11  
3 4  
4 4x15  
5 4x15  
6 4x15  
7 4x15  
8 4x15  
9 4x15  
10 4x15  
11 4x15  
12 4x15  
13 4x15  
14 4x15  
15 4x15  
16 4x15  
17 4x15  
18 4x15  
19 4x15  
20 4x15  
21 4x15  
22 4x15  
23 4x15  
24 4x15  
25 4x15  
26 4x15  
27 4x15  
28 4x15  
29 4x15  
30 4x15  
31 4x15  
32 4x15  
33 4x15  
34 4x15

1 10  
2 11  
3 12  
4 13  
5 14  
6 15  
7 16  
8 17  
9 18  
10 19  
11 20  
12 21  
13 22  
14 23  
15 24  
16 25  
17 26  
18 27  
19 28  
20 29  
21 30  
22 31  
23 32  
24 33  
25 34

1 10  
2 11  
3 12  
4 13  
5 14  
6 15  
7 16  
8 17  
9 18  
10 19  
11 20  
12 21  
13 22  
14 23  
15 24  
16 25  
17 26  
18 27  
19 28  
20 29  
21 30  
22 31  
23 32  
24 33  
25 34

1 10  
2 11  
3 12  
4 13  
5 14  
6 15  
7 16  
8 17  
9 18  
10 19  
11 20  
12 21  
13 22  
14 23  
15 24  
16 25  
17 26  
18 27  
19 28  
20 29  
21 30  
22 31  
23 32  
24 33  
25 34

**2a**

2a

2b

2b

Mat-Nr. 622456

**3**

nicht einklemmen  
do not pinch  
ne pas coincier  
No doblar

**4**

verspannen  
brace  
calar verticalment  
Enrasar

0 - 60 mm

SW 13

**5**

max. 725  
594

11

**6**

12 13 14 15 16 17 18 19 20 21 22 23 24 25 26 27 28 29 30 31 32 33 34

Torx T 20

**7**

15 16 17 18 19 20 21 22 23 24 25 26 27 28 29 30 31 32 33 34

2.8 - 8.5 kg

**8**

min. 70 mm  
max. 100 mm

einstellen  
adjust  
régler  
ajustar

>100 mm

min. 70 mm  
max. 100 mm

**9**

x = x

**10**

28 29 30 31 32 33 34

**10**

30 31 32 33 34

**11**

Scheibe entfernen  
remove disc  
enlever le disque  
Eliminar disco

min. 16 mm

max. 10 Nm

10 l/min

Dichtheit nach einem Spülgang prüfen.  
Check for leaks after one wash cycle.  
Vérifiez l'étanchéité après un lavage.  
Verificar la estanqueidad tras un ciclo de lavado.

31 32 33 34

38 mm  
max. 1.1 m  
280 mm

26.4 mm 30.9 mm  
(0.34") (0.12")

min. 10 mm  
0.05 - 1 MPa  
(0.5 - 10 bar)  
max. 60°C

max. 4 m

2 m

2.2 m

Mat-Nr. 350564

3 m

3 m

EU3 \*) Mat.-Nr. 644

GB4 \*) Mat.-Nr. 644

1  
4  
5A  
6A  
7A  
8