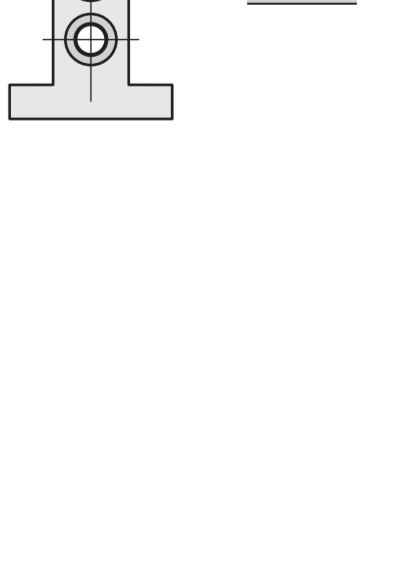
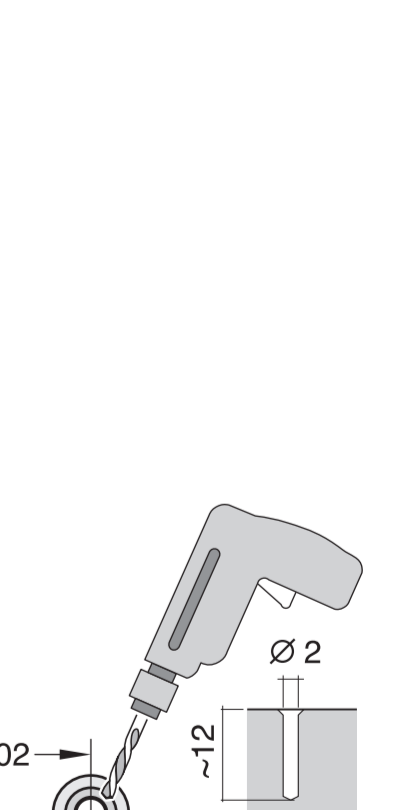
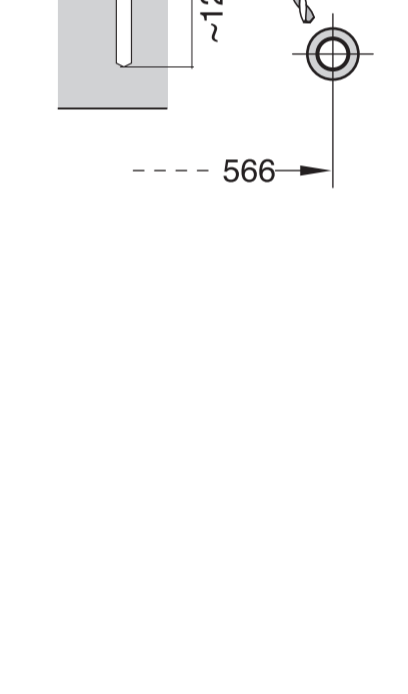
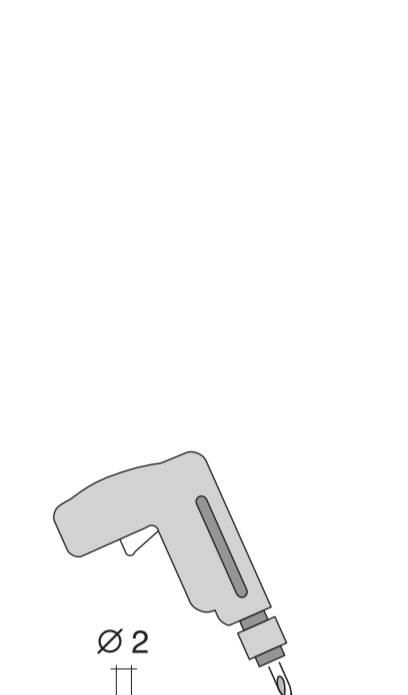
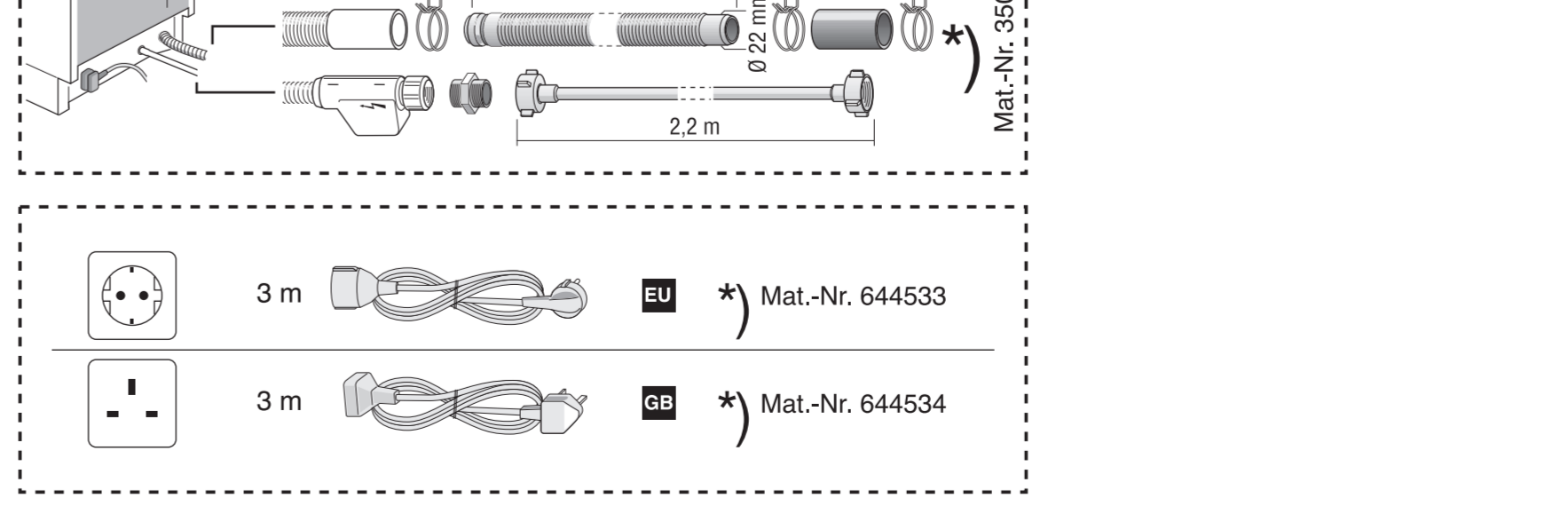
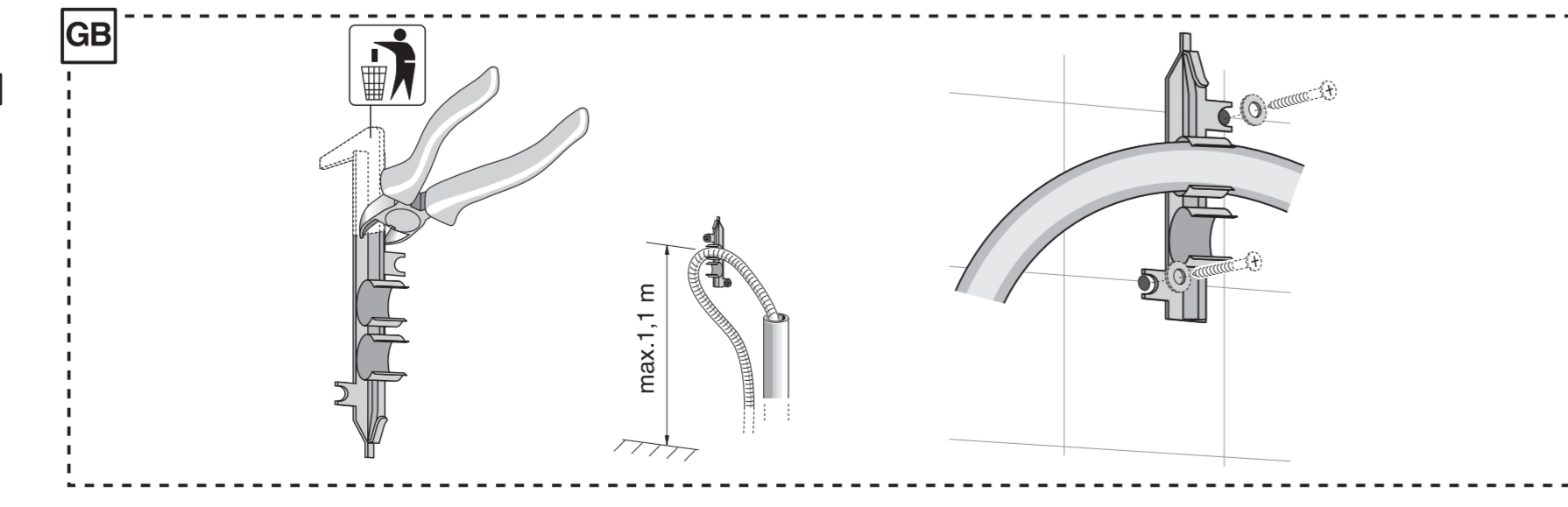
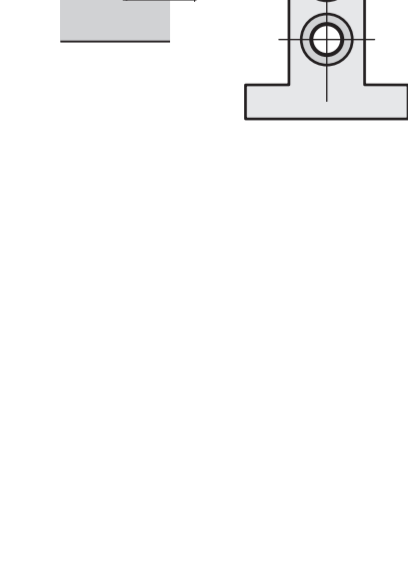
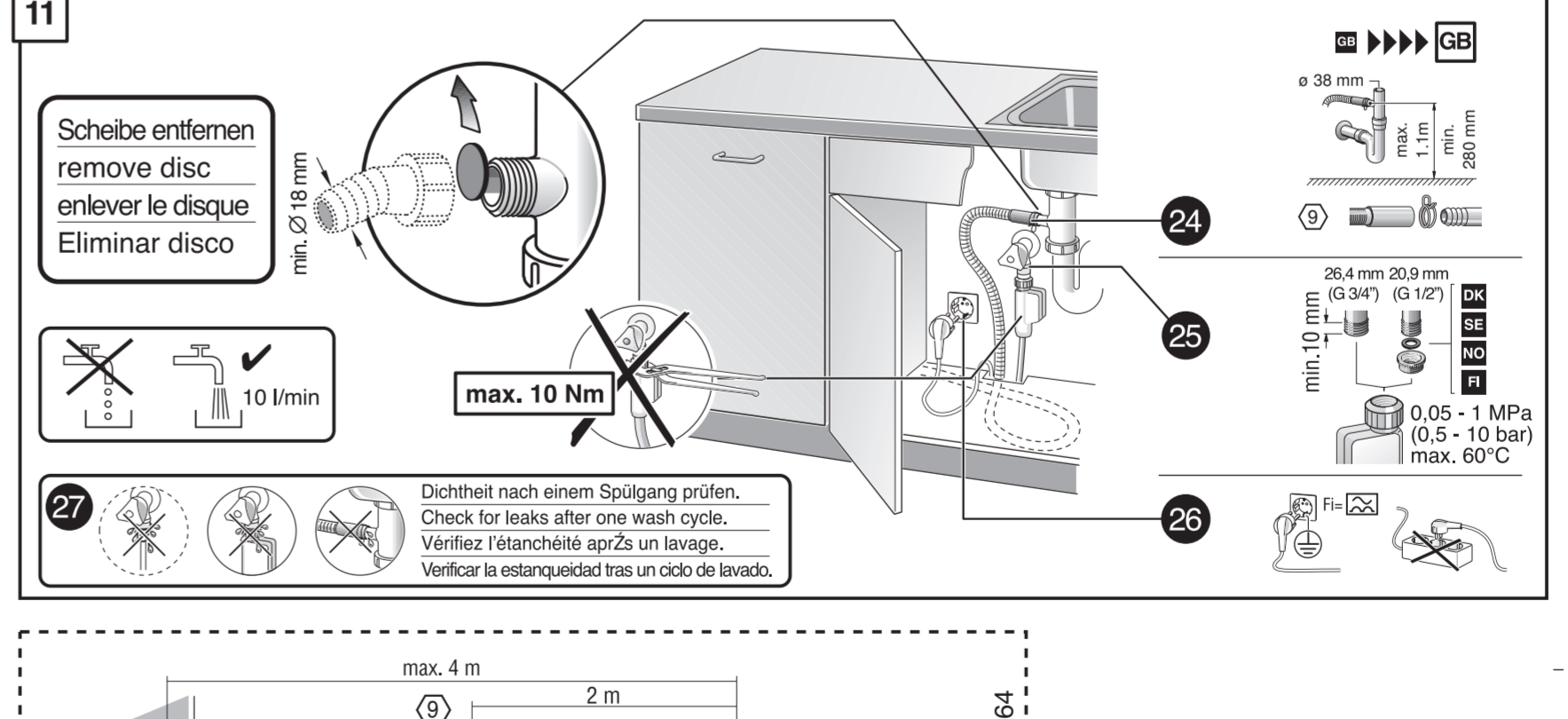
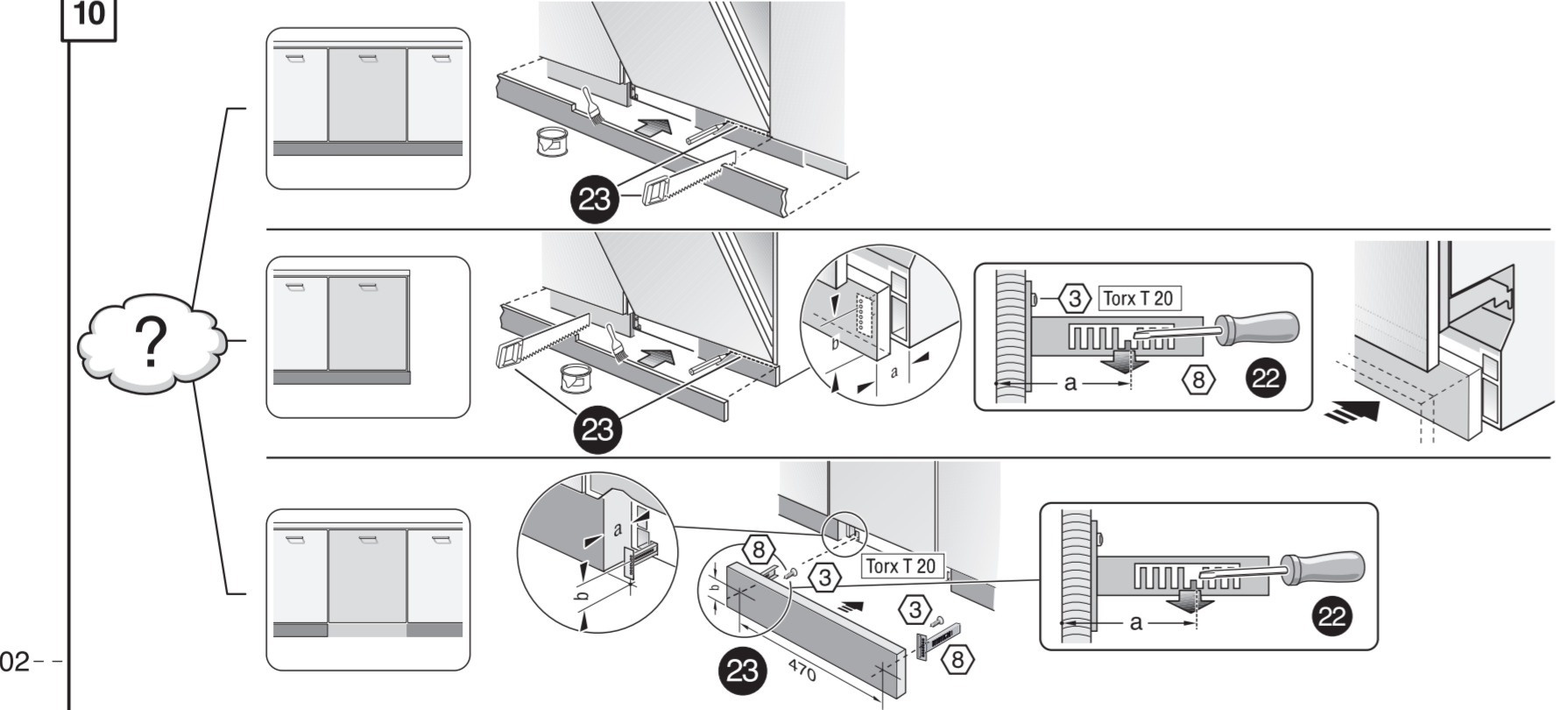
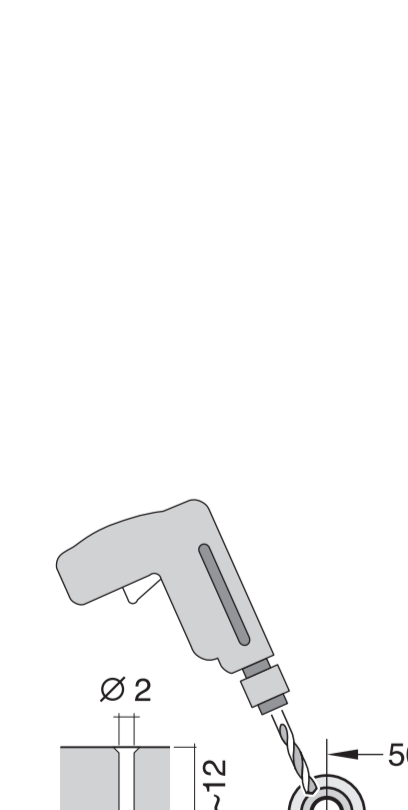
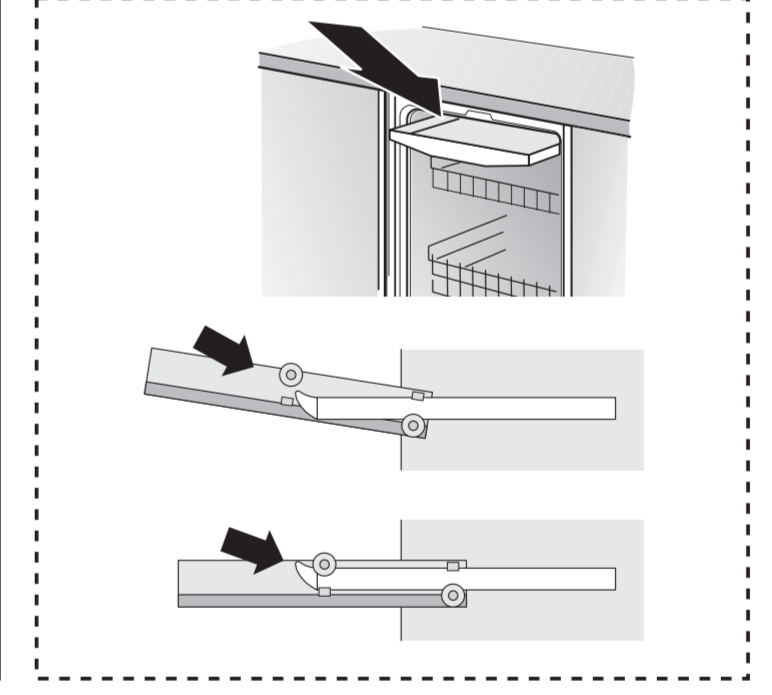
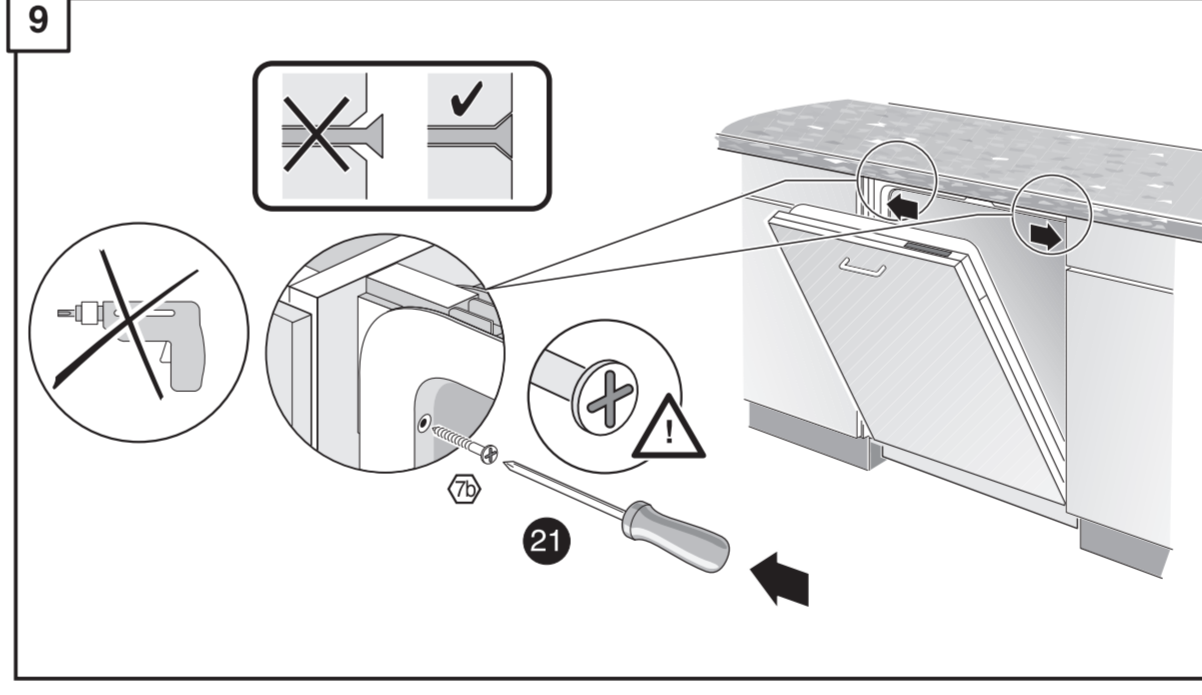
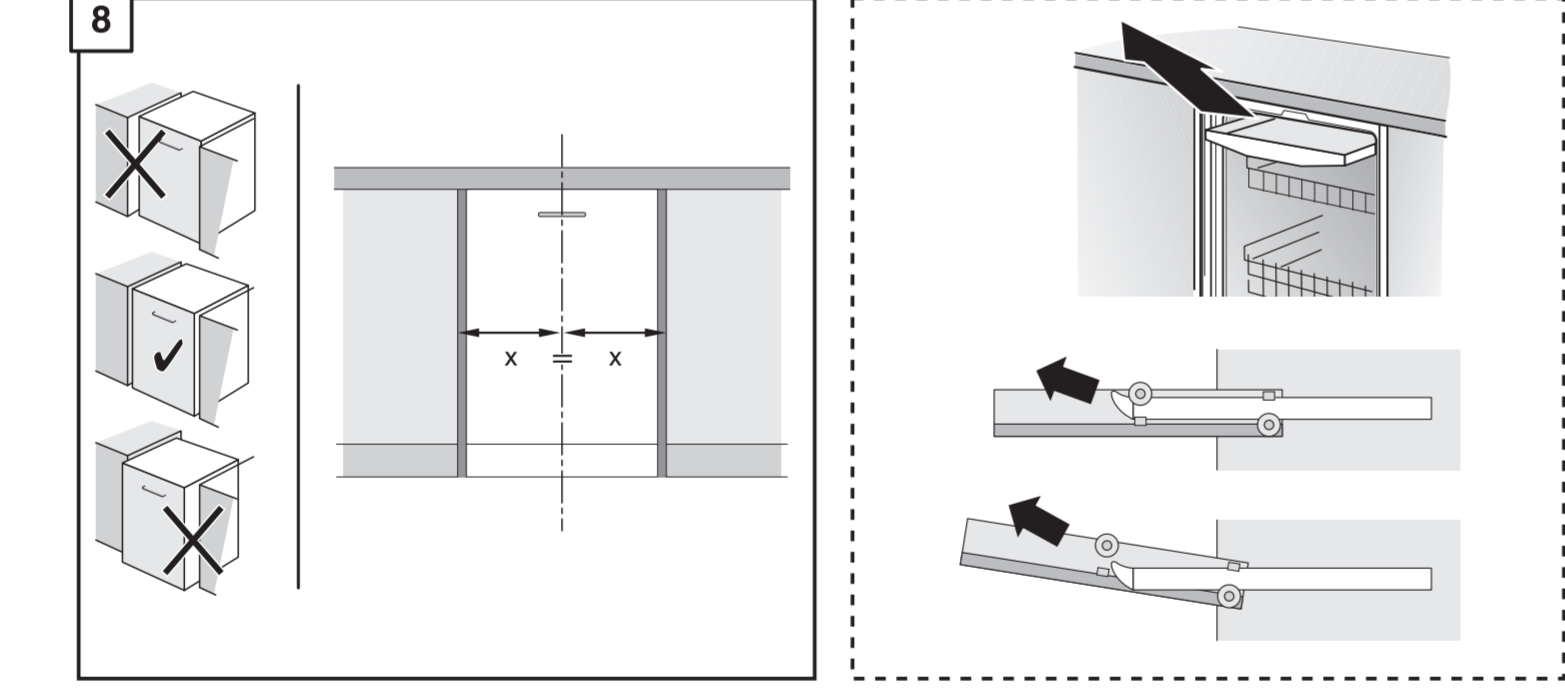
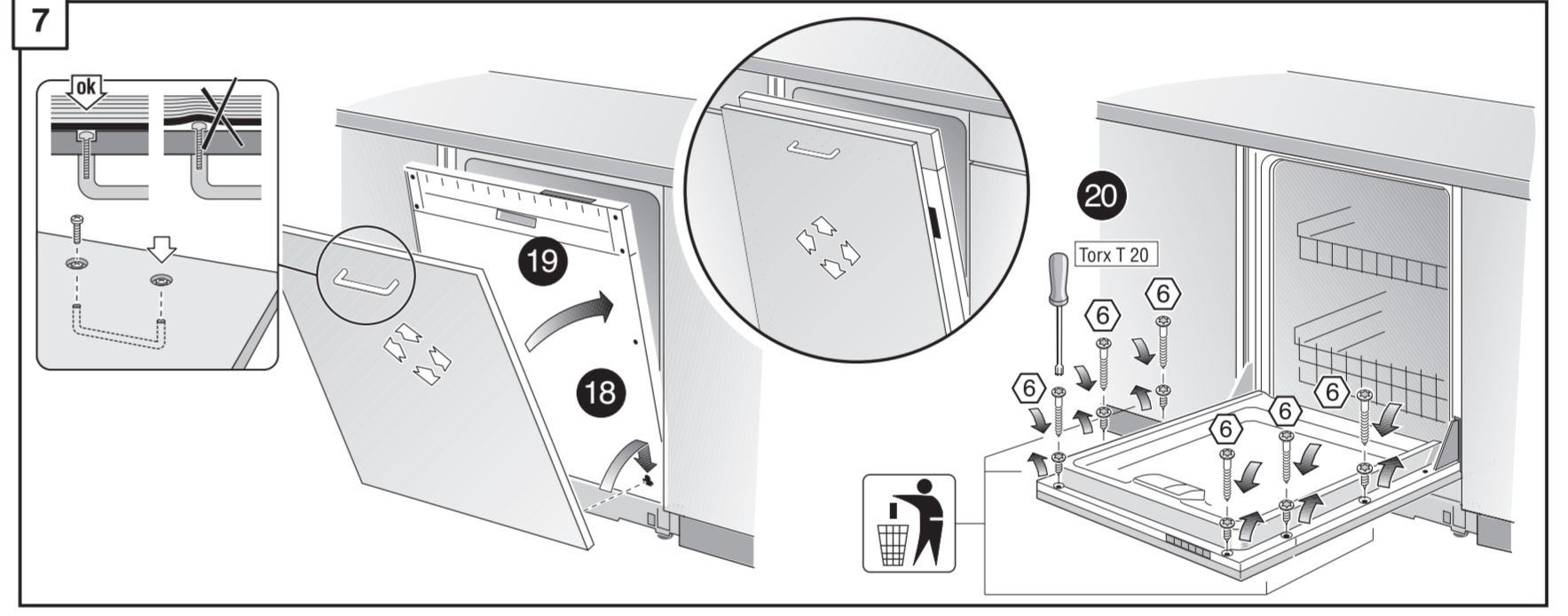
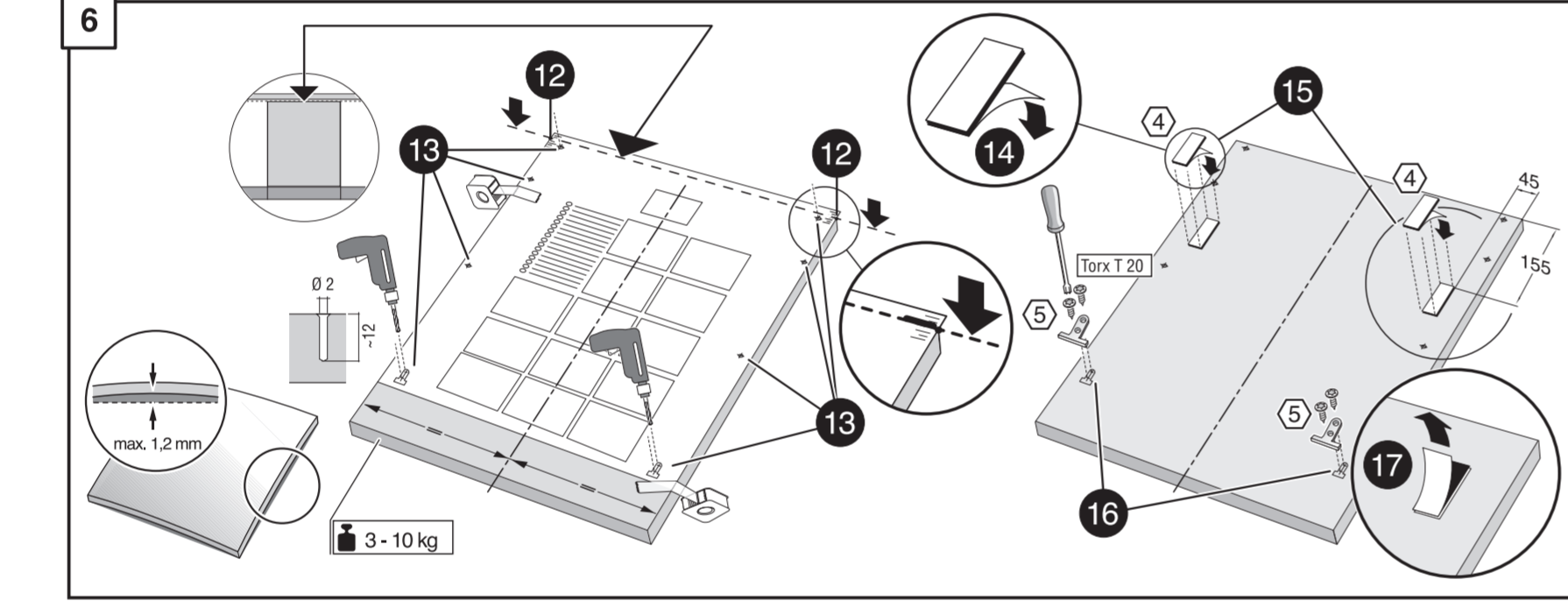
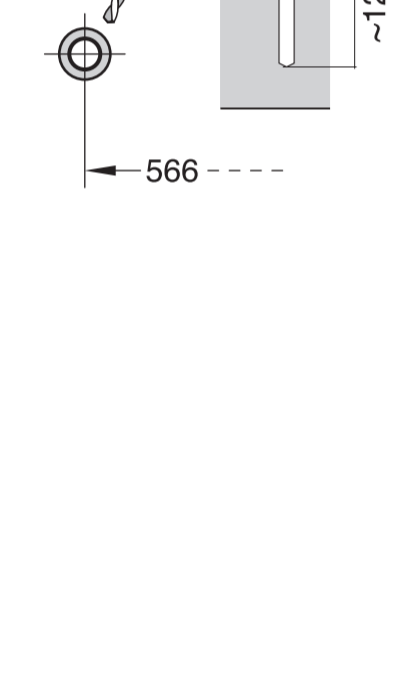
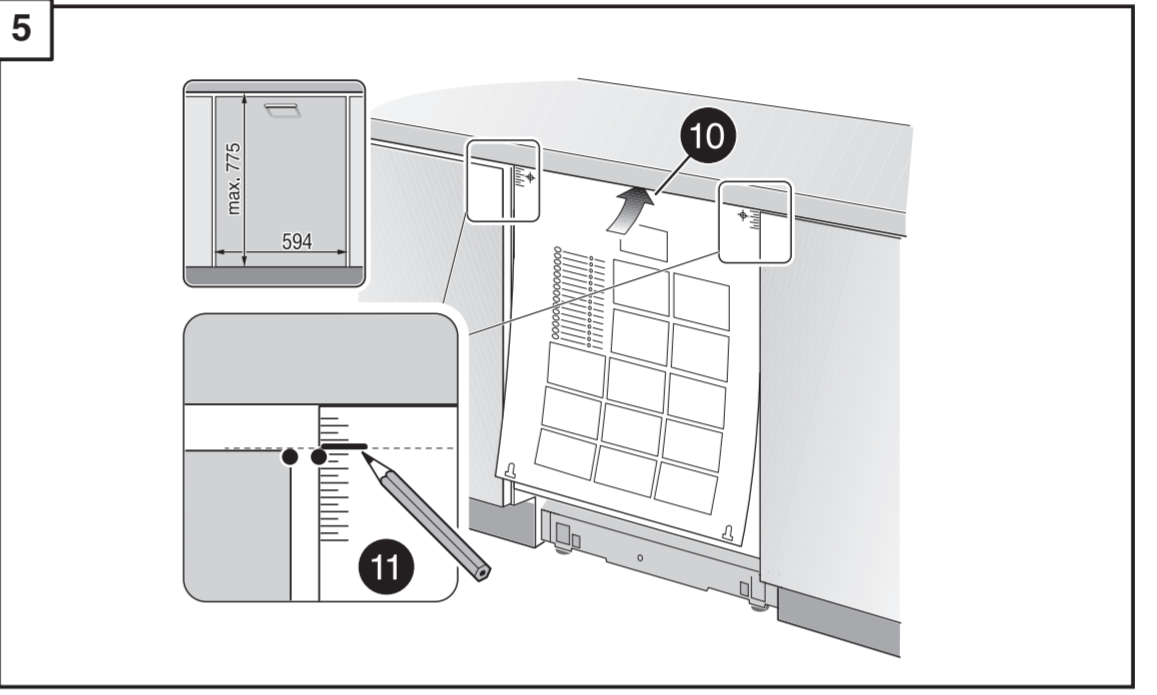
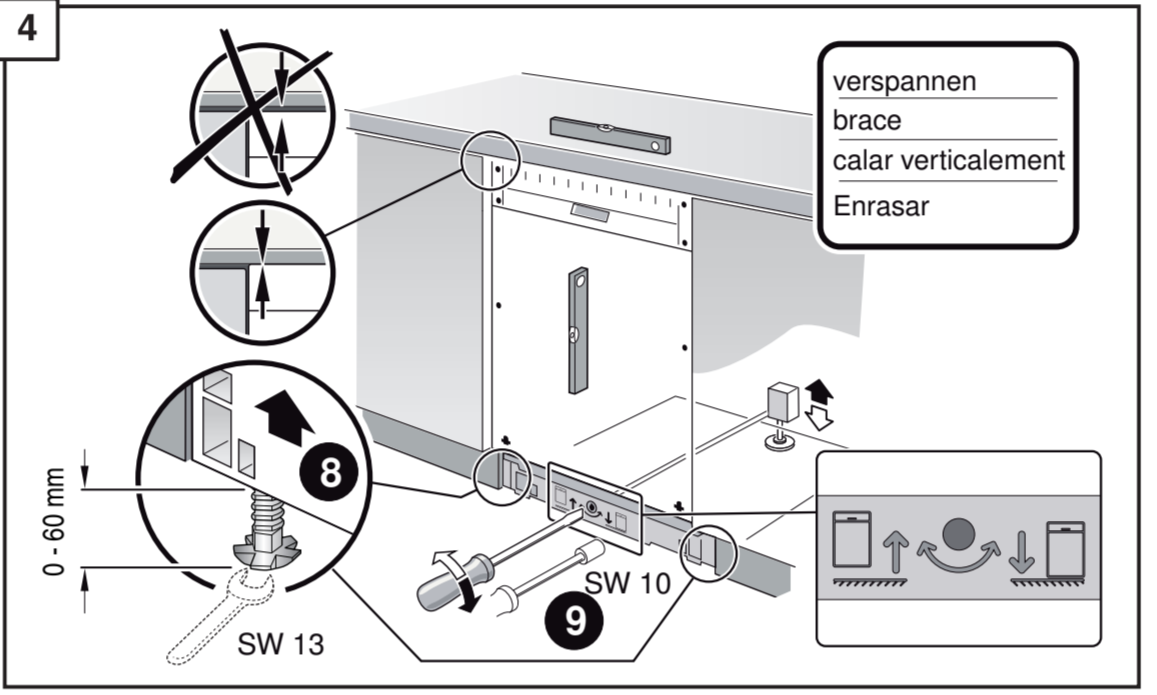
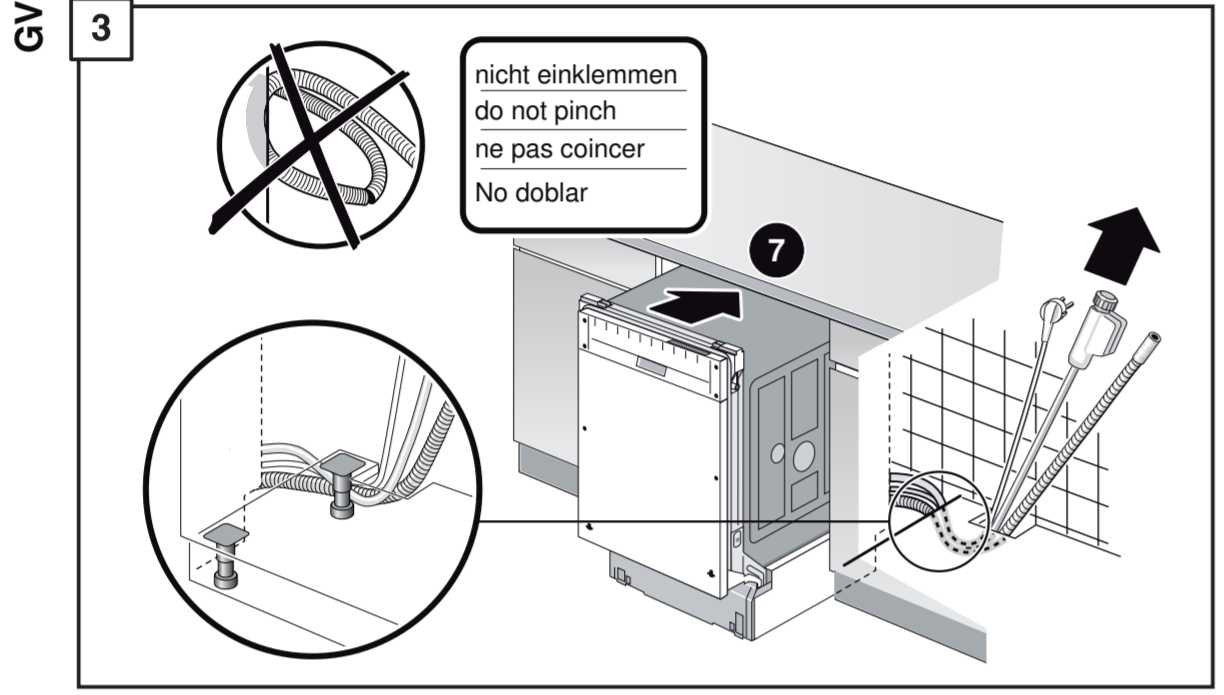
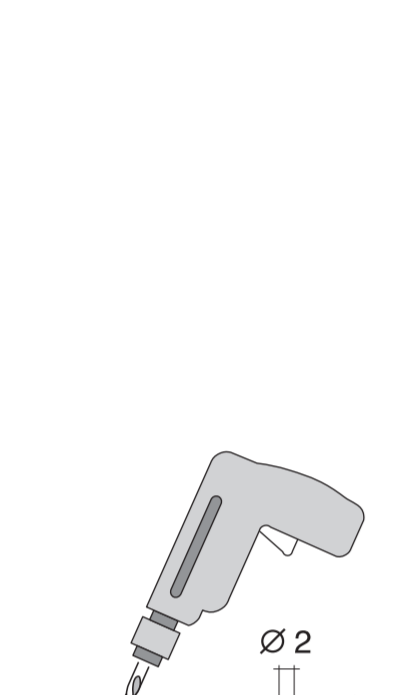
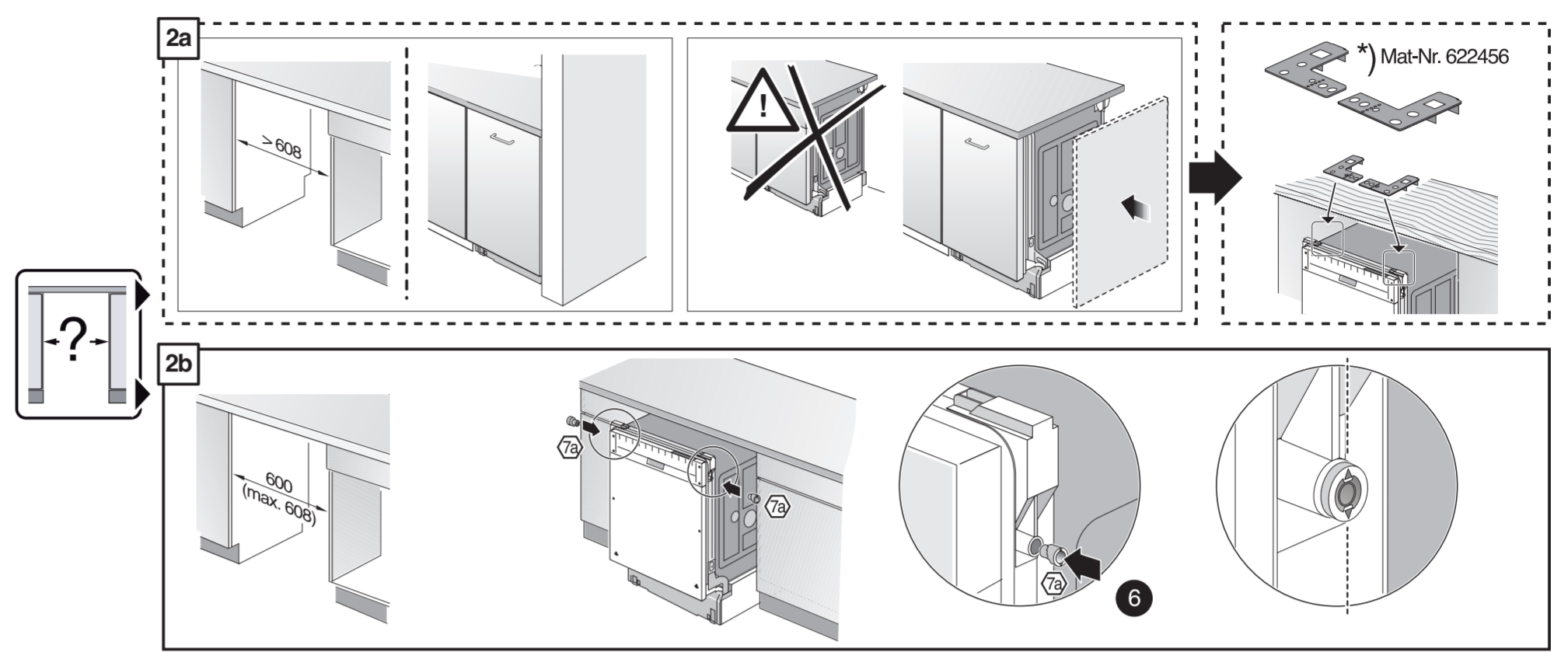
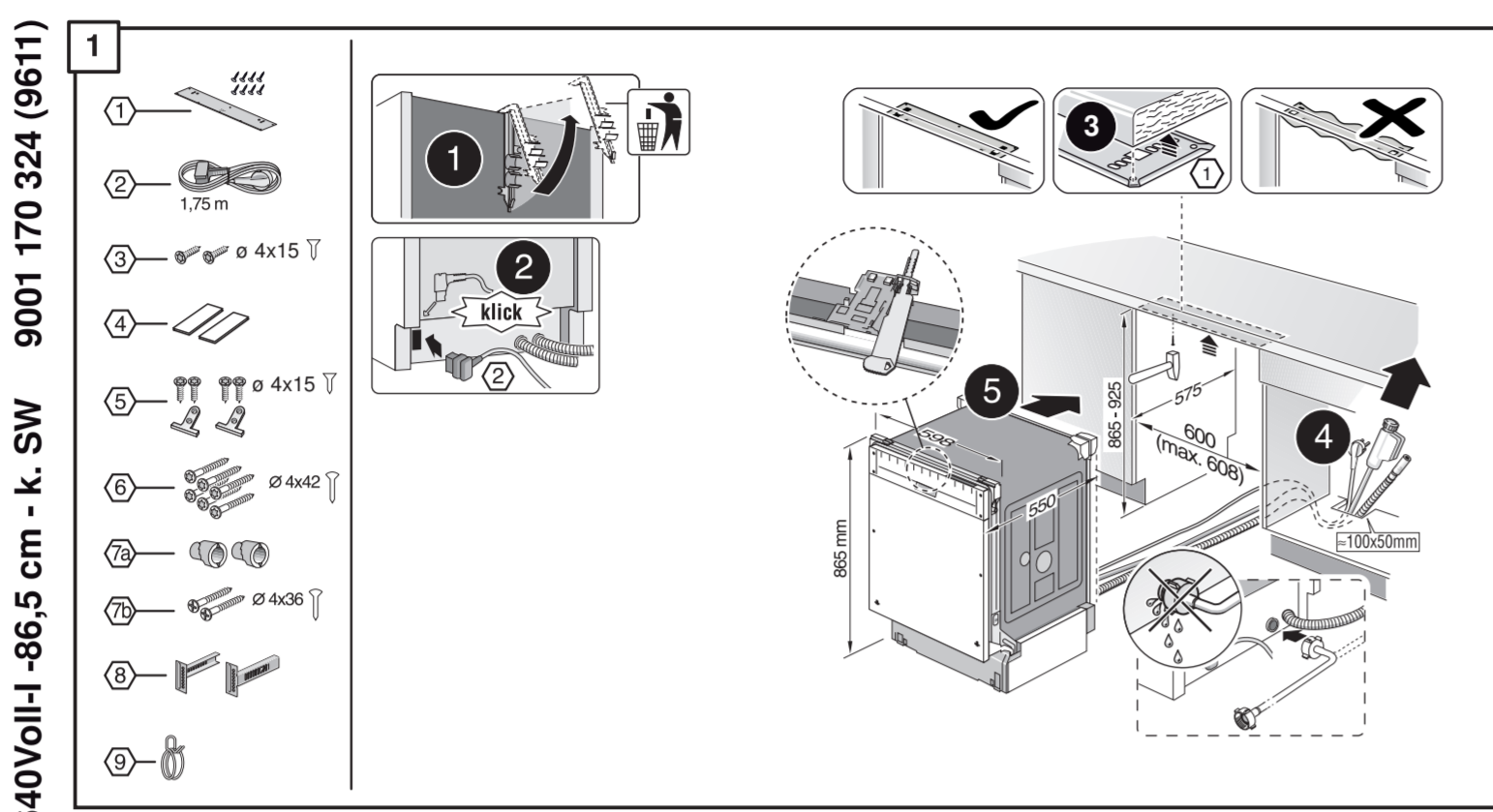
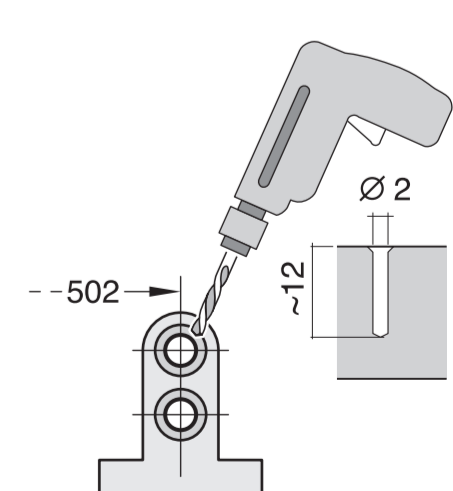
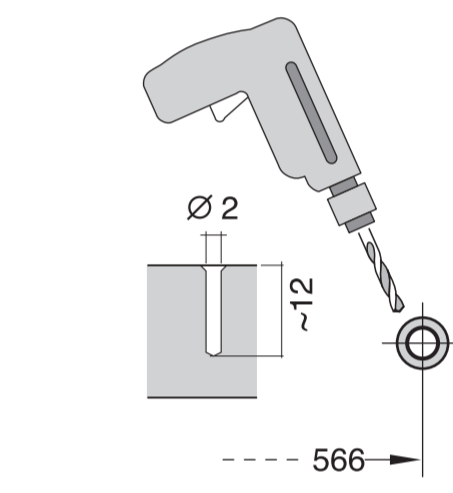
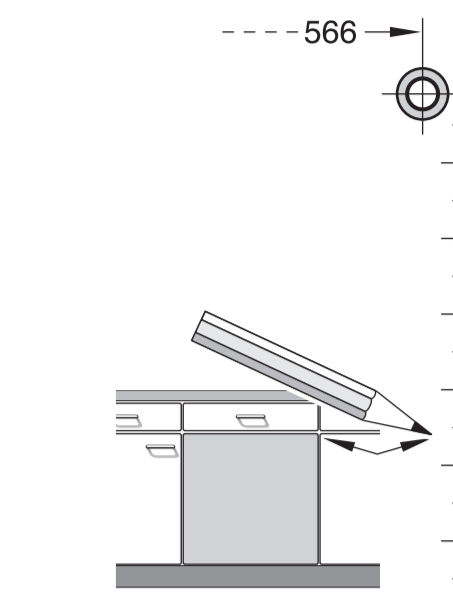
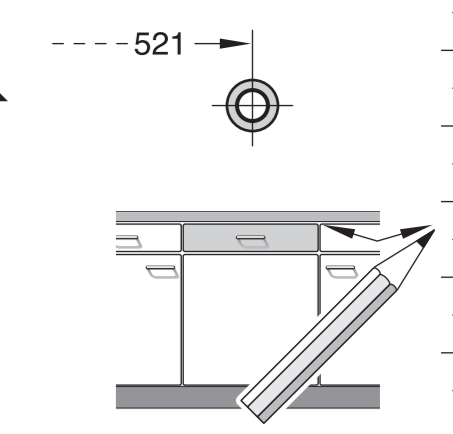
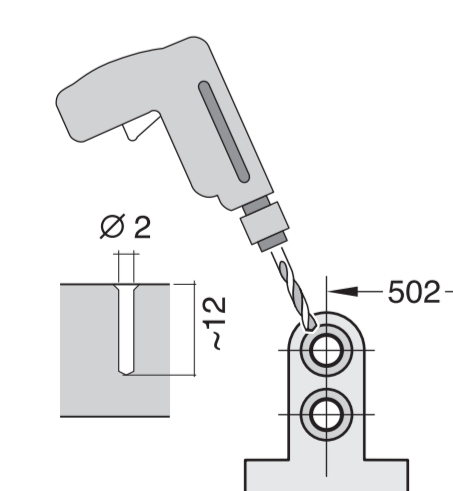
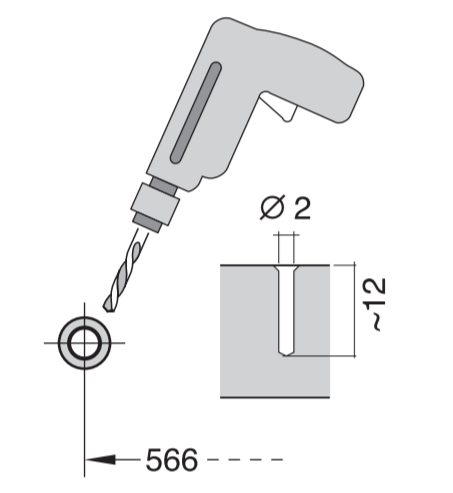
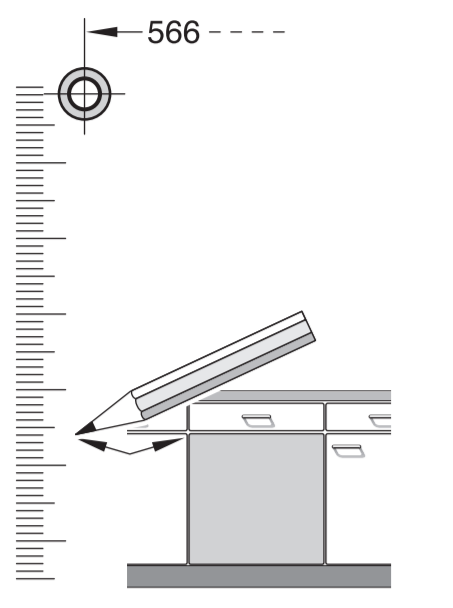
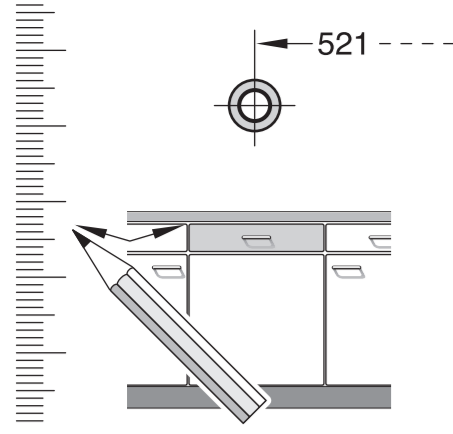


de Montageanleitung *) über Kundendienst erhältlich	fr Montaj klavuzu *) Yetkilii servis üzerinden alınabilir	mk Упатство за монтажа *) се добива преку службата за купувачи	fa راهنمای مونتاژ *) از مرکز خدمات پس از فروش تهیه فرمایید
en Installation instructions *) Available from customer service	ru Инструкция по монтажу *) Можно получить в сервисном центре	sl Navodilo za montažo *) Lanko nabavite v servisni službi	ar تعليمات التركيب *) يمكن طلبها من مركز خدمة العملاء
it Notice de montage *) Disponibile par le biais du service après-vente	cs Montážní návod *) K dispozici přes servisní službu	pl Uputstvo za montažu *) Može se nabaviti preko servisne službe	ko 설치 설명서 *) 고객센터 서비스 센터에서 구입 가능
nl Montagevoorschrift *) Tegen meerprijs bij de Servicedienst verkrijgbaar	no Monteringsanvisning *) fåes hos kundeservice	et Monteerimisjuhend *) küsige klientiteeninduselt	zh 安装说明书 *) 可向售后服务站索取
pt Instruções per il montaggio *) Disponibili presso il servizio assistenza clienti	fi Asennusohje *) Saatavissa huoltopalvelusta	lv Montažimo instrukcija *) Jā galimā gauti klientu aptarnavimo servise	uk Інструкція з монтажу *) Можна отримати через сервісну службу
es Instrucciones de montaje *) Se puede adquirir a través del Servicio de Asistencia Técnica Oficial de la marca	da Monteringsvejledning *) Kan købes hos serviceafdelingen	lt Montāžas pamācība *) Var saņemt servisa dienestā	tr Montaj talimatları *) Müşteri hizmetleri servisi üzerinden alınabilir
pl Instrukcja montażu *) Dostanete w służbie zakaźnikom	hu Szerelési utasítás *) A vevőszolgálaton keresztül kapható	sk Návod na montáž *) Dostanete v službe zakaźnikom	id Petunjuk Pemasangan *) bisa didapatkan melalui Customer Service
sv Monteringsanvisning *) Kan fås via Service	hr Uputa za montažu *) može dobiti kod službe održavanja	sq Udhzues për montim *) Sigurohet nëpërmjet servisit	kk Сікe қосу туралы нұсқаулар! *) Сервис қызметі қарасты орталығында алуына жатады





1

1. Torx T20
2. Torx T20
3. Torx T20
4. Torx T20
5. Torx T20
6. Torx T20
7. Torx T20
8. Torx T20
9. Torx T20
10. Torx T20
11. Torx T20
12. Torx T20
13. Torx T20
14. Torx T20
15. Torx T20
16. Torx T20
17. Torx T20
18. Torx T20
19. Torx T20
20. Torx T20
21. Torx T20
22. Torx T20
23. Torx T20
24. Torx T20
25. Torx T20
26. Torx T20
27. Torx T20
28. Torx T20
29. Torx T20
30. Torx T20

2a

2b

Mat-Nr. 622456

3

nicht einklemmen
do not pinch
ne pas coincer
No doblar

4

verspannen
brace
calar verticalmente
Enrasar

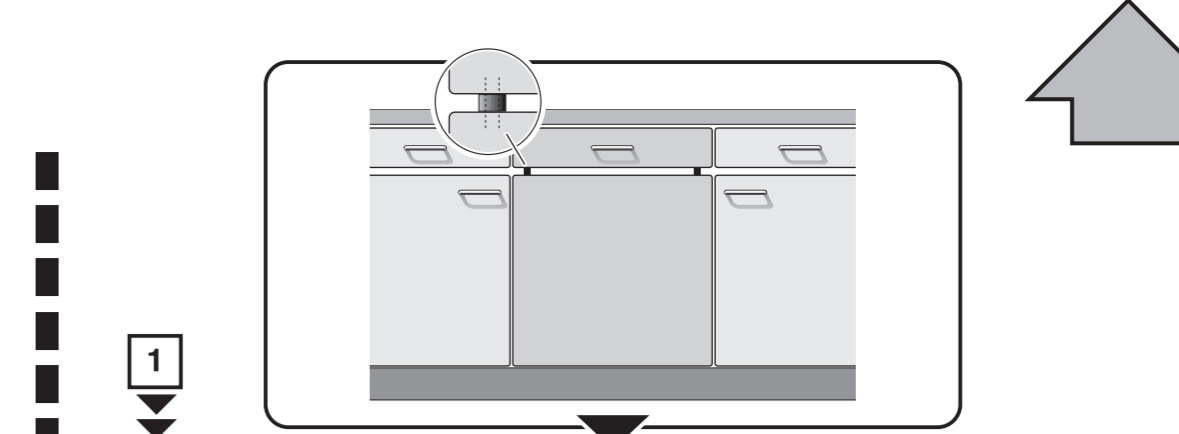
0-60 mm
SW 13

5

6

7

max. 1.2 mm
3-10 kg



1

4

5A

6A

max. 1.2 mm
3-10 kg

7A

max. 1.2 mm

8

11

8

9

min. Ø 19 mm

10

502
~12

11

max. 4 m
2 m
0.22 mm
2.2 m
Mat-Nr. 350564

Scheibe entfernen
remove disc
enlever le disque
Eliminar disco

max. 10 Nm

Dichtheit nach einem Spülgang prüfen.
Check for leaks after one wash cycle.
Vérifiez l'étanchéité après un lavage.
Verificar la estanqueidad tras un ciclo de lavado.

10 l/min

0.05 - 1 MPa
(0.5 - 10 bar)
max. 60°C

max. 4 m
2 m
0.22 mm
2.2 m
Mat-Nr. 350564

3 m

3 m

Mat-Nr. 644533

Mat-Nr. 644534