



Register your new Bosch now:
www.bosch-home.com/welcome



Extractor hood
DWA06E651/B, DWA06E621, DWA06E661



BOSCH

[en] Instruction manual

en Table of contents

Important safety information	3
Environmental protection	5
Saving energy.....	5
Environmentally-friendly disposal.....	5
Operating modes	6
Exhaust air mode.....	6
Circulating-air mode.....	6
Operating the appliance	6
Setting the fan.....	6
Intensive setting.....	6
Fan run-on time.....	6
Lighting.....	6

Saturation display.....	7
Temperature safety switch.....	7
Cleaning and maintenance	8
Trouble shooting	10
After-sales service	11
Accessories for circulated air mode	11

Additional information on products, accessories, replacement parts and services can be found at www.bosch-home.com and in the online shop www.bosch-eshop.com

⚠ Important safety information

Read these instructions carefully. Only then will you be able to operate your appliance safely and correctly. Retain the instruction manual and installation instructions for future use or for subsequent owners.

The appliance can only be used safely if it is correctly installed according to the safety instructions. The installer is responsible for ensuring that the appliance works perfectly at its installation location.

This appliance is intended for domestic use and the household environment only. The appliance is not intended for use outside. Do not leave the appliance unattended during operation. The manufacturer is not liable for damage which is caused by improper use or incorrect operation.

This appliance is intended for use up to a maximum height of 2000 metres above sea level.

This appliance may be used by children over the age of 8 years old and by persons with reduced physical, sensory or mental capabilities or by persons with a lack of experience or knowledge if they are supervised or are instructed by a person responsible for their safety how to use the appliance safely and have understood the associated hazards.

Children must not play with, on, or around the appliance. Children must not clean the appliance or carry out general maintenance unless they are at least 8 years old and are being supervised.

Keep children below the age of 8 years old at a safe distance from the appliance and power cable.

Check the appliance for damage after unpacking it. Do not connect the appliance if it has been damaged in transport.

This appliance is not intended for operation with an external clock timer or a remote control.

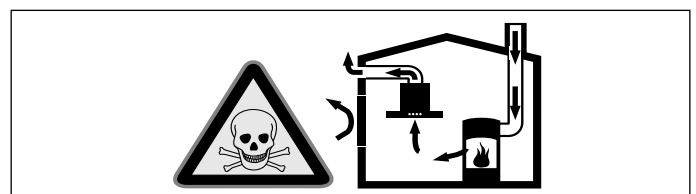
Danger of suffocation!

Packaging material is dangerous to children. Never allow children to play with packaging material.

Danger of death!

Risk of poisoning from flue gases that are drawn back in.

Always ensure adequate fresh air in the room if the appliance is being operated in exhaust air mode at the same time as room air-dependent heat-producing appliance is being operated.

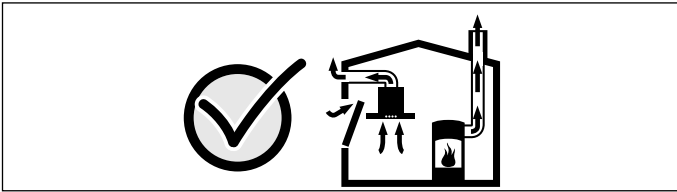


Room air-dependent heat-producing appliances (e.g. gas, oil, wood or coal-operated heaters, continuous flow heaters or water heaters) obtain combustion air from the room in which they are installed and discharge the exhaust gases into the open air through an exhaust gas system (e.g. a chimney).

In combination with an activated vapour extractor hood, room air is extracted from the kitchen and neighbouring rooms - a partial vacuum is produced if not enough fresh air is supplied. Toxic gases from the chimney or the extraction shaft are sucked back into the living space.

- Adequate incoming air must therefore always be ensured.
- An incoming/exhaust air wall box alone will not ensure compliance with the limit.

Safe operation is possible only when the partial vacuum in the place where the heat-producing appliance is installed does not exceed 4 Pa (0.04 mbar). This can be achieved when the air needed for combustion is able to enter through openings that cannot be sealed, for example in doors, windows, incoming/exhaust air wall boxes or by other technical means.



In any case, consult your responsible Master Chimney Sweep. He is able to assess the house's entire ventilation setup and will suggest the suitable ventilation measures to you.

Unrestricted operation is possible if the vapour extractor hood is operated exclusively in the circulating-air mode.

Risk of fire!

- Grease deposits in the grease filter may catch fire.

Clean the grease filter at least once a month.

Never operate the appliance without the grease filter.

- Grease deposits in the grease filter may catch fire. Never work with naked flames close to the appliance (e.g. flambéing). Do not install the appliance near a heat-producing appliance for solid fuel (e.g. wood or coal) unless a closed, non-removable cover is available. There must be no flying sparks.
- Hot oil and fat can ignite very quickly. Never leave hot fat or oil unattended. Never use water to put out burning oil or fat. Switch off the hotplate. Extinguish flames carefully using a lid, fire blanket or something similar.
- When gas burners are in operation without any cookware placed on them, they can build up a lot of heat. A ventilation appliance installed above the cooker may become damaged or catch fire. Only operate the gas burners with cookware on them.
- Operating several gas burners at the same time gives rise to a great deal of heat. The ventilation appliance may become damaged or catch fire. The ventilation appliance must only be combined with gas burners that do not exceed the maximum total output of 11 kW.

Risk of burns!

The accessible parts become very hot when in operation. Never touch hot parts. Keep children at a safe distance.

Risk of injury!

- Components inside the appliance may have sharp edges. Wear protective gloves.
- Items placed on the appliance may fall down. Do not place any objects on the appliance.

Risk of electric shock!

- A defective appliance may cause electric shock. Never switch on a defective appliance. Unplug the appliance from the mains or switch off the circuit breaker in the fuse box. Contact the after-sales service.
- Incorrect repairs are dangerous. Repairs may only be carried out and damaged power cables replaced by one of our trained after-sales technicians. If the appliance is defective, unplug the appliance from the mains or switch off the circuit breaker in the fuse box. Contact the after-sales service.
- Do not use any high-pressure cleaners or steam cleaners, which can result in an electric shock.

Causes of damage

Caution!

Risk of damage due to corrosion. Always switch on the appliance while cooking to avoid condensation. Condensate can produce corrosion damage.

Always replace faulty bulbs to prevent the remaining bulbs from overloading.

Risk of damage due to ingress of humidity into the electronic circuitry. Never clean operator controls with a wet cloth.

Surface damage due to incorrect cleaning. Clean stainless steel surfaces in the direction of the grain only. Do not use any stainless steel cleaners for operator controls.

Surface damage due to strong or abrasive cleaning agents. Never use strong and abrasive cleaning agents.

Risk of damage from returning condensate. Install the exhaust duct in such a way that it falls away from the appliance slightly (1° slope).

Environmental protection

Unpack the appliance and dispose of the packaging in an environmentally-responsible manner.

Your new appliance is particularly energy-efficient. Here you can find tips on how to save even more energy when using the appliance, and how to dispose of your appliance properly.

Saving energy

- During cooking, ensure that there is a sufficient supply of air so that the extractor hood can work efficiently and with a low level of operating noise.
- Adjust the fan speed to the intensity of the cooking fumes. Only use intensive mode where this is required. A lower fan speed means that less energy is consumed.
- If there are intensive cooking fumes, select a higher fan speed in good time. If cooking fumes have already spread in the kitchen, the extractor hood must be operated for longer.
- Switch off the extractor hood if you no longer require it.
- Switch off the lighting if you no longer require it.
- Clean and, if required, replace the filter at regular intervals in order to increase the effectiveness of the ventilation system and to prevent the risk of fire.

Environmentally-friendly disposal

Dispose of packaging in an environmentally-friendly manner.



This appliance is labelled in accordance with European Directive 2012/19/EU concerning used electrical and electronic appliances (waste electrical and electronic equipment - WEEE). The guideline determines the framework for the return and recycling of used appliances as applicable throughout the EU.

Operating modes

This appliance can be used in exhaust-air mode or circulating-air mode.

Exhaust air mode



The air which is drawn in is cleaned by the grease filters and conveyed to the exterior by a pipe system.

Note. The exhaust air must not be conveyed into a functioning smoke or exhaust gas flue or into a shaft which is used to ventilate installation rooms which contain heat-producing appliances.

- Before conveying the exhaust air into a non-functioning smoke or exhaust gas flue, obtain the consent of the heating engineer responsible.
- If the exhaust air is conveyed through the outer wall, a telescopic wall box should be used.

Circulating-air mode



The air which is drawn in is cleaned by the grease filters and an activated carbon filter and conveyed back into the kitchen.

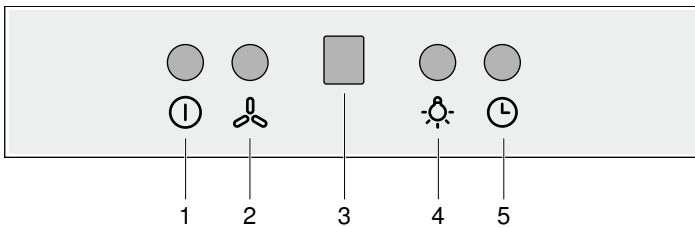
Note: To bind odours in circulating-air mode, you must install an activated carbon filter. The different options for operating the appliance in circulating-air mode can be found in the brochure. Alternatively, ask your dealer. The required accessories are available from specialist outlets, from customer service or from the Online Shop. The accessory numbers can be found at the end of the instructions for use.

Operating the appliance

These instructions apply to several appliance variants. It is possible that individual features are described which do not apply to your appliance.

Note: Switch on the extractor hood when you start cooking and switch it off again several minutes after you have finished cooking. This is the most effective way of removing the kitchen fumes.

Control panel



Explanation

1	Switch the fan on/off
2	Switch the fan setting up
3	Display panel
4	Switch on the lighting
5	Switch on the fan run-on

Setting the fan

Note: Always adjust the fan strength to meet current conditions. If there is a large build-up of steam or fumes, select a high fan setting.

Switching on the appliance

1. Press the ① button.
Fan setting 1 is set.
2. Press the button until the required fan setting is set.
The set fan setting is shown in the display panel. After the intensive setting, fan setting 1 is set.

Switching off the appliance

Press the 0 button.

Intensive setting

You can use the intensive setting if there is a large build-up of odours and fumes/vapours.

1. Press the button until fan setting 4 is displayed in the display panel.
The intensive setting is activated.
2. Press the button until fan setting 1 is displayed in the display panel.
The intensive setting is deactivated and fan setting 1 is set.

Note: The running time of the intensive setting is 5 minutes. Once this time has elapsed, the appliance switches back to fan setting 2.

Fan run-on time

The duration of the run-on time depends on the fan setting that is set:

- Fan setting 1: 20 minutes
- Fan setting 2: 15 minutes
- Fan setting 3: 10 minutes
- Intensive setting: 5 minutes

1. Select the fan setting.
2. Press the button.
The fan runs at the set fan setting. The indicator beside the set fan setting flashes. The ventilation automatically switches off once the run-on time has elapsed.
3. Press the button.
The fan run-on ends before the remaining run-on time elapses. Ventilation continues at the set fan setting.
4. Press the or button.
The fan run-on ends before the remaining run-on time elapses. The ventilation is switched off.

Lighting

The lighting can be switched on and off independently of the ventilation.

Press the button.

Saturation display

If the metal grease filter and the activated charcoal filter are saturated, the following numbers flash:

- **Metal grease filter:** 1
- **Activated charcoal filter:** 2
- **Metal grease filter and activated charcoal filter:** 1 and 2 flash alternately

When this happens, do not delay cleaning the metal grease filter or replacing the activated charcoal filter any further.

For instructions on how to clean the metal grease filter, refer to the section *Cleaning and maintenance*.

Resetting a saturation indicator

Press and hold the ① button until the saturation indicator no longer flashes.



The saturation indicator is reset.

Resetting the saturation displays



1. Press and hold the ① button until the saturation indicator for the metal grease filter no longer flashes.
The saturation indicator for the metal grease filter is reset.
2. Press and hold the ① button until the saturation indicator for the activated charcoal filter no longer flashes.
The saturation indicator for the activated charcoal filter is reset.

Switching over the display for circulating-air mode

For circulating-air mode, the electronic control display must be switched over accordingly:

1. Check that the extractor hood is connected and switched off.
2. Press the  and  buttons at the same time until the numbers 1 and 2 flash alternately.
The electronic control is switched over to circulating-air mode.

Switching over the display for exhaust air mode


1. Check that the extractor hood is connected and switched off.
2. Press the  and  buttons at the same time until the number 1 flashes.
The electronic control is switched back to exhaust-air mode.

Temperature safety switch

The appliance is equipped with a temperature safety switch. If excessive temperatures are measured at the appliance, the appliance automatically switches to the highest fan level until the temperature has dropped again.

- If the hood is switched on, fan setting 3 is set automatically. If the temperature falls again, the appliance switches back to the previously selected fan setting.
- If the hood is switched off, the appliance automatically switches to fan setting 3. If the temperature falls again, the appliance automatically switches off.
- While the temperature safety switch is active, 3 is shown in the display panel. The ventilation strength cannot be reduced during this time.

Switching off the temperature safety switch

Press the  button until 3 no longer flashes in the display panel. The temperature safety switch is switched off. The ventilation is switched off.

Note: If the ambient temperature of the display panel is still too high after a short period of time, fan setting 3 is switched on again.

Cleaning and maintenance

⚠ Risk of burns!

The appliance becomes hot during operation. Allow the appliance to cool down before cleaning.

⚠ Risk of electric shock!

Penetrating moisture may result in an electric shock. Clean the appliance using a damp cloth only. Before cleaning, pull out the mains plug or switch off the circuit breaker in the fuse box.

⚠ Risk of electric shock!

Do not use any high-pressure cleaners or steam cleaners, which can result in an electric shock.

⚠ Risk of injury!

Components inside the appliance may have sharp edges. Wear protective gloves.

Cleaning agents

To ensure that the different surfaces are not damaged by using the wrong cleaning agent, observe the information in the table. Do not use any of the following:

- Harsh or abrasive cleaning agents,
- Cleaning agents with a high alcohol content,
- Hard scouring pads or cleaning sponges,
- High-pressure cleaners or steam cleaners.

Wash new sponge cloths thoroughly before use.

Follow all instructions and warnings included with the cleaning agents.

Area	Cleaning agent
Stainless steel	Hot soapy water: Clean with a dish cloth and then dry with a soft cloth. Clean stainless steel surfaces in the grind direction only. Special stainless steel cleaning products are available from our after-sales service or from specialist retailers. Apply a very thin layer of the cleaning product with a soft cloth.
Painted surfaces	Hot soapy water: Clean using a damp dish cloth and dry with a soft cloth/towel. Do not use any stainless steel cleaners.
Aluminium and plastic	Glass cleaner: Clean with a soft cloth.
Glass	Glass cleaner: Clean with a soft cloth. Do not use a glass scraper.
Controls	Hot soapy water: Clean using a damp dish cloth and dry with a soft cloth/towel. Risk of electric shock caused by penetrating moisture. Risk of damage to the electronics from penetrating moisture. Never clean operating controls with a wet cloth. Do not use any stainless steel cleaners.

Cleaning the metal mesh grease filters

⚠ Risk of fire!

Grease deposits in the grease filter may catch fire.

Clean the grease filter at least once a month.

Never operate the appliance without the grease filter.

Notes

- Do not use any aggressive, acidic or alkaline cleaning agents.
- When cleaning the metal mesh grease filters, also clean the holder for the metal mesh grease filters in the appliance using a damp cloth.
- The metal mesh grease filters can be cleaned in the dishwasher or by hand.

In the dishwasher:

Note: If the metal mesh grease filters are cleaned in the dishwasher, slight discolouration may occur. This has no effect on the function of the metal mesh grease filters.

- Do not clean heavily soiled metal mesh grease filters together with utensils.
- Place the metal mesh grease filters loosely in the dishwasher. The metal mesh grease filters must not be wedged in.

By hand:

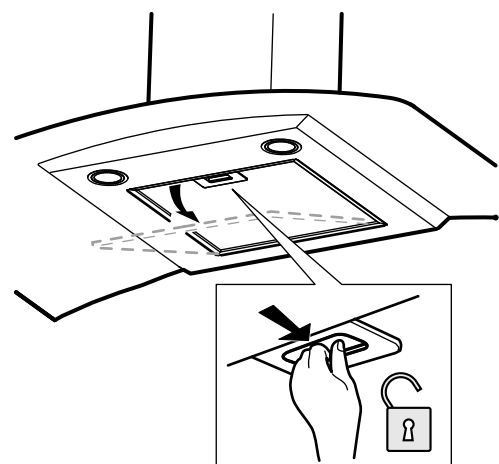
Note: You can use a special grease solvent for stubborn dirt. It can be ordered via the Online Shop.

- Soak the metal mesh grease filters in a hot soapy solution.
- Clean the filters with a brush and then rinse them thoroughly.
- Leave the metal mesh grease filters to drain.

Removing metal grease filter

1. Open the lock on the underside of the appliance and remove the metal grease filters from the retainer.

Note: Grease may accumulate in the bottom of the metal grease filter. Hold the metal grease filter level, otherwise grease will drip out.



2. Clean the metal grease filter.
3. After removing the filters, clean the inside of the appliance.
4. Clean the filter cover.

Installing the metal mesh grease filter

1. Insert the metal grease filters with the lock to the front.
Insert the metal grease filters on the underside of the appliance.
2. Fold the metal grease filters inwards, locking them in place.
3. Press and hold the ① button for more than three seconds.
The saturation indicator is reset.

Changing the activated charcoal filter (only in circulating-air mode)

In order to guarantee efficient odour filtration, the filter must be serviced regularly.

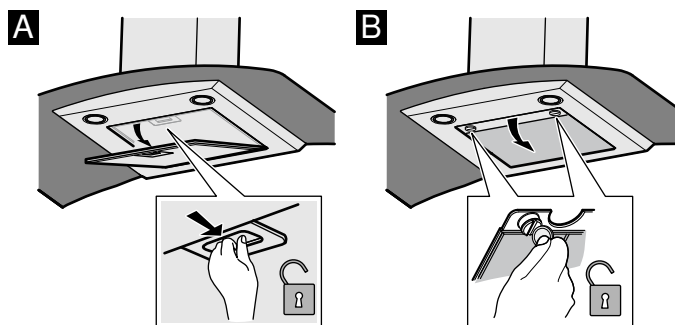
The activated charcoal filters must be replaced at least every 4 months.

Notes

- The activated charcoal filters are not included in the delivery.
The activated charcoal filters can be obtained from specialist retailers, from our after-sales service or from the Online Shop.
- The activated charcoal filters cannot be cleaned or reactivated.

Removing the activated charcoal filter

1. To remove the metal grease filter, see above.
2. Undo the screw connections on the retainer. **A**
3. Fold the retainer down and remove it. **B**



Fitting the activated charcoal filter

1. Slide the new activated charcoal filter into the retainer.
2. Slide the wire into the retainer.
3. Insert the retainer into the extractor hood.
4. Close the screw connections on the retainer.
5. To fit the metal grease filter, see above.
6. Press and hold the ① button until the saturation indicator no longer flashes.
The saturation indicator is reset.

Trouble shooting

Malfunctions often have simple explanations. Please read the following notes before calling the after-sales service.

⚠ Risk of electric shock!

Incorrect repairs are dangerous. Repairs may only be carried out and damaged power cables replaced by one of our trained after-sales technicians. If the appliance is defective, unplug the appliance from the mains or switch off the circuit breaker in the fuse box. Contact the after-sales service.

Malfunction table

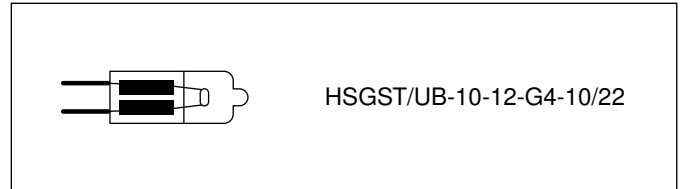
Problem	Possible cause	Solution
The appliance does not work	The plug is not plugged in.	Connect the appliance to the electricity supply
	Power cut	Check whether other kitchen appliances are working
	Faulty fuse	Check in the fuse box to make sure that the fuse for the appliance is OK
The button illumination does not work.	The control unit is faulty.	Call the after-sales service.
The lighting does not work.	The bulbs are faulty.	For information on changing the bulbs, see the "Replacing Bulbs" section.
1 or 2 flashes in the display	The grease or activated charcoal filter is saturated.	Clean the filter – see the section "Cleaning and maintenance".
1 or 2 flashes in the display	The grease and activated charcoal filters are saturated.	Clean the filter – see the section "Cleaning and maintenance".
⚡ flashes in the display	The ambient temperature of the display panel is above the temperature alarm limit.	Switch off the temperature alarm – see the section "Temperature alarm limit".

Replacing bulbs

⚠ Risk of electric shock!

When changing the bulbs, the bulb socket contacts are live. Before changing the bulb, unplug the appliance from the mains or switch off the circuit breaker in the fuse box.

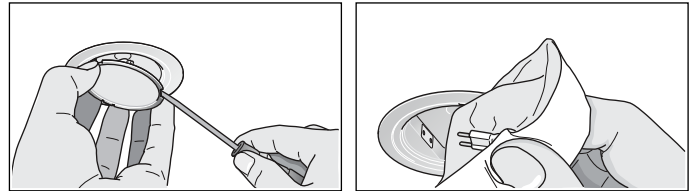
Important Only use a bulb of the same type and same power (see also the bulb holder or rating plate).



Replacing halogen bulbs

Note: When inserting halogen bulbs, do not touch the glass tube. Use a clean cloth to insert the halogen bulbs.

- Carefully remove the bulb ring using a suitable tool.
- Pull out the bulb and replace it with a bulb of the same type.



- Insert the bulb cover.
- Insert the mains plug or switch on the fuse again.

Replace the bulb with one of the same type:

Voltage: 12 V

Power: max. 20 W

Socket: G4

After-sales service

Our after-sales service is there for you if your appliance needs to be repaired. We will always find the right solution in order to avoid unnecessary visits from a service technician.

When calling us, please give the product number (E no.) and the production number (FD no.) so that we can provide you with the correct advice. The rating plate with these numbers can be found inside the appliance (remove the metal mesh grease filter to gain access).

You can make a note of the numbers of your appliance and the telephone number of the after-sales service in the space below to save time should it be required.

E no.	FD no.
--------------	---------------

After-sales service

Please be aware that a visit by an after-sales engineer will be charged if a problem turns out to be the result of operator error, even during the warranty period.

Please find the contact data of all countries in the enclosed customer service list.

To book an engineer visit and product advice

GB 0344 892 8979

Calls charged at local or mobile rate.

IE 01450 2655

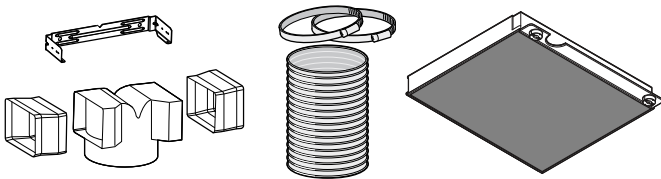
0.03 € per minute at peak. Off peak 0.0088 € per minute.

Rely on the professionalism of the manufacturer. You can therefore be sure that the repair is carried out by trained service technicians who carry original spare parts for your appliances.

Accessories for circulated air mode

(not included in the delivery)

DHZ5585





Robert Bosch Hausgeräte GmbH

Carl-Wery-Straße 34

81739 München

Germany

www.bosch-home.com



9001147361

960812