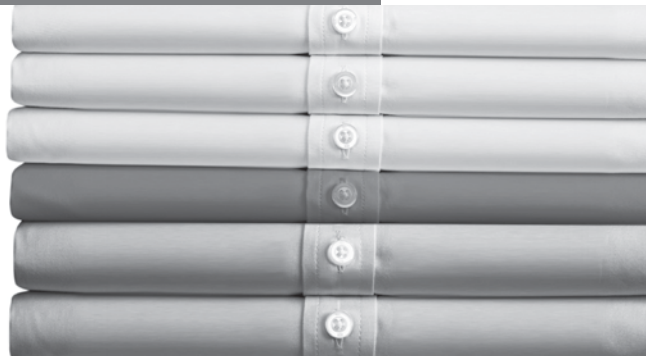




Register your new Bosch now:  
<http://www.bosch-home.co.uk>



Sensixx **DS38**



**BOSCH**

**en** Operating instructions




<b>Index</b>	<b>pag</b>
General safety instructions	4
Description	7
1. Preparations	7
2. Programme selection	8
3. Special programs	9
3.1 “i-Temp Advanced” programme	9
3.2 “AntiShine” programme	9
3.3 “Calc’nClean” programme	9
4. “PulseSteam” function	10
5. “Intelligent steam” function	10
6. Ironing without steam	10
7. Vertical steam	10
8. Energy saving “eco” button	11
9. Auto shut-off	11
10. Fabric protection soleplate cover	11
11. Calc’nClean Perfect	12
11.1 Cleaning the Boiler	12
11.2. Rinsing the iron steam chamber	13
12. Cleaning & Maintenance	15
13. Storing the appliance	16
Tips to help you save energy	16
Trouble shooting	17
Guarantee conditions	19

**Thank you for buying the Sensixx DS38 steam station, the new steam-ironing system from Bosch.**

Carefully read through the operating instructions for the appliance and safeguard them for future reference.

**You can download this manual from the local homepages of Bosch.**

## General safety instructions

- The iron must not be left unattended while it is connected to the supply mains.
- Remove the plug from the socket before filling the appliance with water or before pouring out the remaining water after use.
- The appliance must be used and placed on a stable surface.
- When placed on its stand, make sure that the surface on which the stand is placed is stable.
- The iron should not be used if it has been dropped, if there are visible signs of damage or if it is leaking water. It must be checked by an authorized Technical Service Centre before it can be used again.
- With the aim of avoiding dangerous situations, any work or repair that the appliance may need, e.g. replacing a faulty mains cable, must only be carried out by qualified personnel from an Authorised Technical Service Centre.
- This appliance can be used by children aged from 8 years and above and persons with reduced physical, sensory or mental capabilities or lack of experience and knowledge if they have been given supervision or instruction concerning use of the appliance in a safe way and understand the hazards involved. Children shall not play with the appliance. Cleaning and user maintenance shall not be made by children without supervision.
- Keep the iron and its cord out of reach of children less than 8 years of age when it is energized or cooling down.
-  CAUTION. Hot surface.  
Surface is liable to get hot during use.

- This appliance has been designed exclusively for domestic use and must not be used for industrial purposes.
- This appliance must be used only for the purposes for which it was designed, i.e. as an iron. Any other use will be considered improper and consequently dangerous. The manufacturer will not be held responsible for any damage arising from misuse or improper use.
- This appliance is to be connected and used in accordance with the information stated on its characteristics plate.
- This appliance must be connected to an earthed socket. If it is absolutely necessary to use an extension cable, make sure that it is suitable for 16A and has a socket with an earth connection.
- If the safety fuse fitted in the appliance blows, the appliance will be rendered inoperative. To restore normal operation the appliance will have to be taken to an authorised Technical Service Centre.
- In order to avoid that, under unfavourable mains conditions, phenomena like transient voltage drops or lighting fluctuations can happen, it is recommended that the iron is connected to a power supply system with a maximum impedance of  $0.37 \Omega$ . If necessary, the user can ask the public power supply company for the system impedance at the interface point.
- The appliance must never be placed directly under the tap to fill the water tank.
- Unplug the appliance from the mains supply after each use, or if a fault is suspected.
- The electrical plug must not be removed from the socket by pulling the cable.
- Never immerse the iron in water or any other fluid.
- Do not leave the appliance exposed to weather conditions (rain, sun, frost, etc.)

### Important:

- This appliance reaches high temperatures and produces steam during use, this could cause scalds or burns if not used properly.
- The steam hose, base station, metal plate at the bottom of the removable iron pad (2) and in particular the iron can get hot when used. This is normal.
- Never aim the steam at people or animals.
- Do not allow the power cable to come into contact with the soleplate when it is hot.
- Be aware that the system can keep on steaming for a short additional time after releasing the steam trigger. This is a normal function.

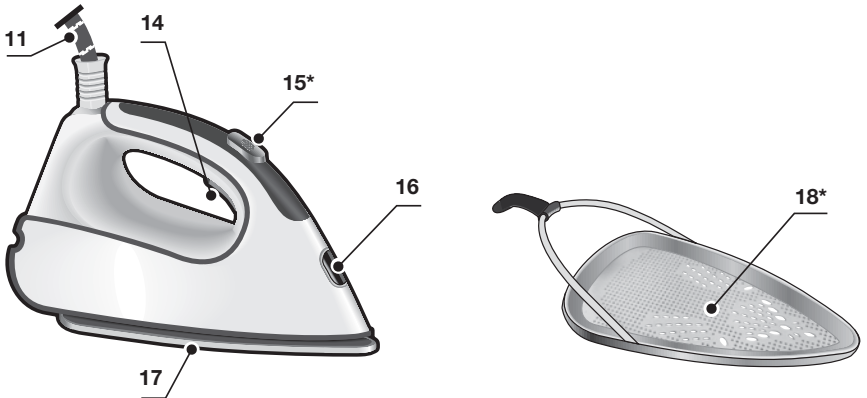
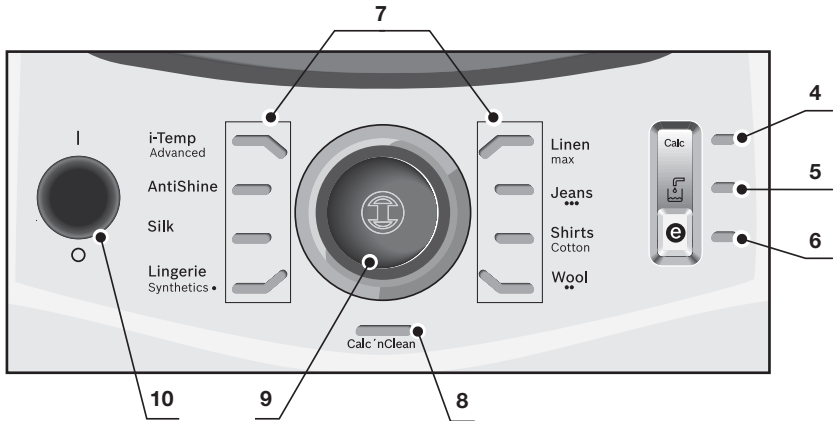
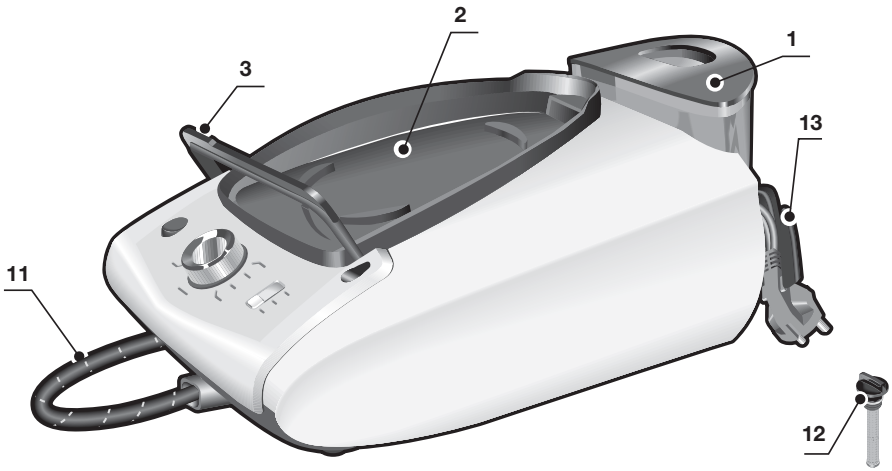
### Advice on disposal

Our goods come in optimised packaging. This basically consists in using non-contaminating materials which should be handed over to the local waste disposal service as secondary raw materials. Your local town council can give you information about how to dispose of obsolete appliances.



**This appliance is labelled in accordance with European Directive 2012/19/EU concerning used electrical and electronic appliances (waste electrical and electronic equipment - WEEE).**

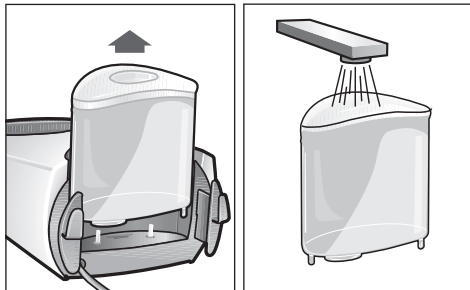
**The guideline determines the framework for the return and recycling of used appliances as applicable throughout the EU.**



## Description

1. Water tank
2. Removable iron pad
3. Iron lock system "SecureLock"
4. "Calc" automatic clean warning indicator light
5. "Water tank empty" indicator light
6. Energy saving "eco" button and indicator light (green)
7. Ironing programme indicator lights
8. "Calc'nClean" decalcification programme and indicator light
9. Programme selector and illuminated ring.
10. "on-off" power button.
11. Steam hose
12. "Calc'nClean Perfect" scale collector
13. Mains cable with storage facility
14. Steam release button
15. Steam shot button "PulseSteam"\*
16. Iron pilot light
17. Soleplate
18. Fabric-protection soleplate cover\*

3. Place the appliance horizontally on a solid, stable surface. You may remove the iron pad from the appliance and place the iron on it on another solid, stable, horizontal surface.
4. Fill the water tank, making sure not to pass the "max" level mark.



5. Unwind the mains cable (13) fully and plug it into an earthed socket.
6. Set the power button (10) to the on position.
7. The appliance will shift automatically to the "i-Temp Advanced" programme (see section 3.1). The corresponding indicator light (7) will flash, and after a few minutes, will remain lit continuously. Two beeps will be heard indicating that the appliance is ready to use.

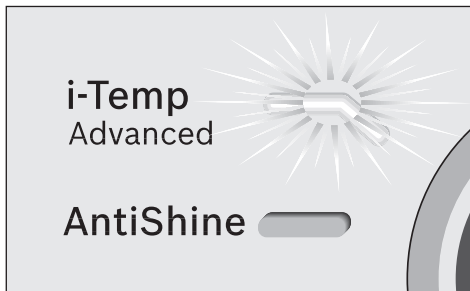


## 1. Preparations

1. Release the iron from its lock system (3) by pulling the lever located at the heel of the iron backwards.



2. Remove any label or protective covering from the soleplate.



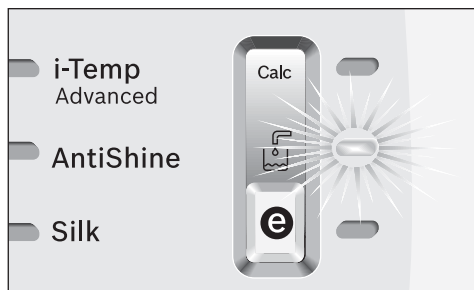
The steam generator will take more time to reach this state only upon the initial heating up, or after performing the descaling operation (Calc'nClean).

When water is already present in the steam generator during regular use, heat up time to reach the operating temperature will be faster.

\* Model dependent

8. This appliance has a built-in water level sensor. The “Water tank empty” indicator light (5) will light and three beeps will be heard when the water tank has to be filled.

**Attention!** If the water tank is empty when one of the ironing programs is selected, the indicator light (7) corresponding to such programme will flash until the water tank is filled.



**Important:**

- Normal tap water can be used. To prolong the optimum steam function, mix tap water with distilled water 1:1. If the tap water in your area is very hard, mix tap water with distilled water 1:2.
- You can inquire about the water hardness with your local water supplier.
- The water tank can be filled at any time while using the appliance.
- To avoid damage and/or contamination of the water tank and the boiler, do not put perfume, vinegar, starch, descaling agents, additives or any other type of chemical product into the water tank.

**Any damage caused by the use of the aforementioned products, will make the guarantee void.**

- The iron is not designed to rest on its heel. Please always position it horizontally on the iron pad (2).
- The iron pad can be placed into the specially designed recess on the appliance or somewhere suitable alongside the ironing area.

**Never rest the iron on the appliance without the iron pad!**

- During its first use the iron may produce certain vapours and odours, along with white particles on the soleplate, this

is normal and it will stop after a few minutes.

- While the steam release button is pressed, the water tank may produce a pumping sound, this is normal, indicating that water is being pumped to the steam tank.

## 2. Programme selection

Your steam station has a programme selector (9) for choosing the different ironing programs.

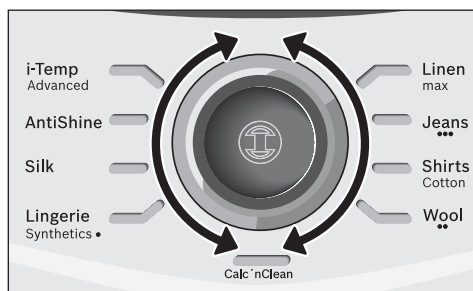
Each programme automatically sets an appropriate combination of temperature and steam which is suitable for the kind of garment selected.

By turning the programme selector you can choose the kind of garment and fabric to be ironed. The corresponding indicator light (7) will flash until the temperature and steam level suitable for the programme selected are reached.

From this moment on, the indicator light will remain lit continuously and two beeps will be heard indicating that the appliance is ready to use.

If the garment to be ironed does not correspond to any of the programs supplied, check the temperature instructions shown on the care label of the garment.

Temperature	Programme
•	Synthetics
••	Wool
•••	Cotton
max	Linen





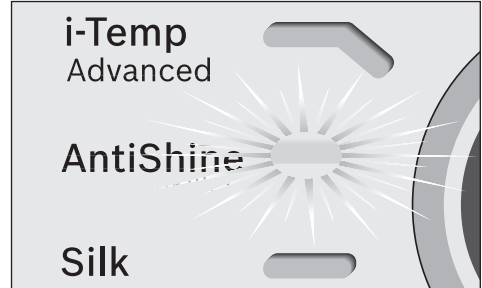
### Tips:

- Sort your garments out based on their cleaning symbol labels, always starting with clothes that have to be ironed at the lowest temperatures.
- For mixed fabrics, select the temperature corresponding to the most delicate fabric.
- If you are not sure what the garment is made of then begin ironing at a low temperature and decide on the correct temperature by ironing a small section not usually seen when worn
- At the beginning of each use, it is possible that drops of water will be dispensed alongside steam. Therefore, it is advisable to try the iron on the ironing board or a piece of cloth to start with.
- For better ironing results, iron the last strokes without steam to dry the garment.

The “i-Temp Advanced” programme does not apply to fabrics that cannot be ironed. Please check the garment care label for details or try ironing on a part of the cloth not visible normally.



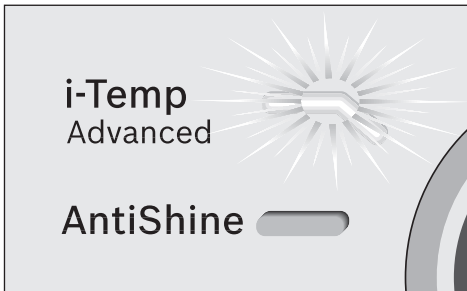
### 3.2 “AntiShine” programme



## 3. Special programs



### 3.1 “i-Temp Advanced” programme

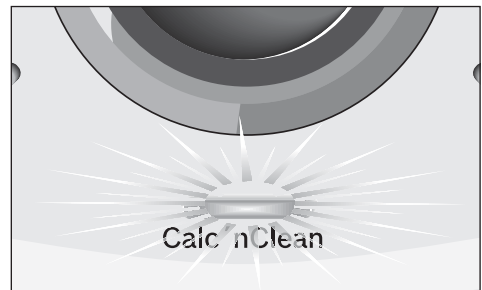


This steam station has an “i-Temp Advanced” programme. If this programme is selected, an appropriate combination of temperature and steam is set, which is suitable for all fabrics that can be ironed. The “i-Temp Advanced” programme prevents clothes from being damaged due to an unsuitable temperature being selected.



### 3.3 “Calc’nClean” programme

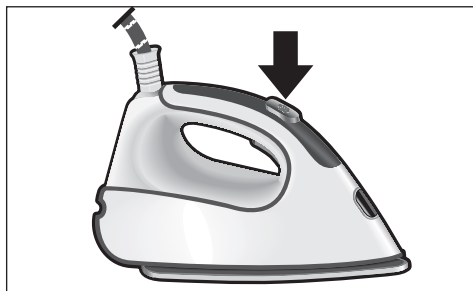
See section 11.



\* Model dependent



## 4. "PulseSteam" function



### This appliance has a special function for tackling difficult creases.

When the steam release button is activated, the steam generator will release three powerful shots of steam so that the steam reaches even deeper into the fabrics.

Briefly press the steam shot button (15\*) on the top of the handle.

#### Remarks:

- It is possible to stop the shots of steam by quickly pressing the steam button again.
- Some water drops may appear when you use the "PulseSteam" function for the first time.  
The water drops will disappear after you have used the function for some time.

## 5. "Intelligent steam" function

This system has intelligent steam control, which, after releasing the steam release button (14 or 15\*), provides a small amount of additional steam.

The additional steam can always be stopped by briefly pressing the steam release button once again.



## 6. Ironing without steam

Begin ironing but without pressing the steam release button.



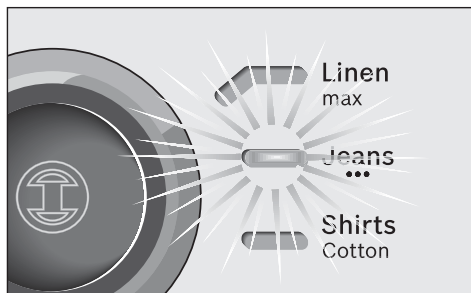
## 7. Vertical steam

This can be used to remove creases from hanging clothes, curtains etc.

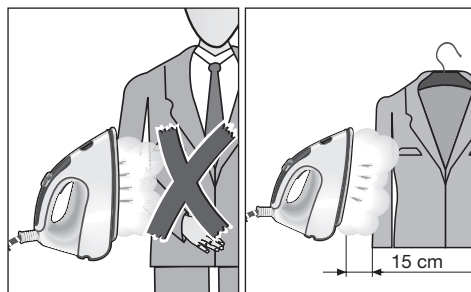
#### Warning!

- ⚠ **Never direct the steam jet at garments that are being worn.**
- Never aim the steam at people or animals.**

1. Select "Jeans / •••" programme to get the optimal steam amount.



2. Hold the iron in an upright position 15 cm away from the garment being steamed.
3. You can steam iron curtains and hanging garments (jackets, suits, coats...) by placing the iron in a vertical position and pressing the steam release button (14 or 15\*).





## 8. Energy saving “eco” button

Push the energy saving button  (6).

If the energy saving setting is selected, you can save up to 30% of the energy and 40% of the water consumption (\*), and still achieve good results when ironing most of your garments.

It is advisable to use the normal energy setting only for thick and very wrinkled fabrics.

(\* *In comparison to the maximum setting.*)



## 9. Auto shut-off

If during ironing, the steam release button (14 or 15\*) on the iron handle is not pressed for a certain length of time (8 minutes), the steam station will automatically switch off.

The illuminated ring around the programme selector (9) will flash when auto shut-off has been activated. Three beeps will be heard at the same time.

To switch the steam station back on, press the steam release button again.



## 10. Fabric protection soleplate cover

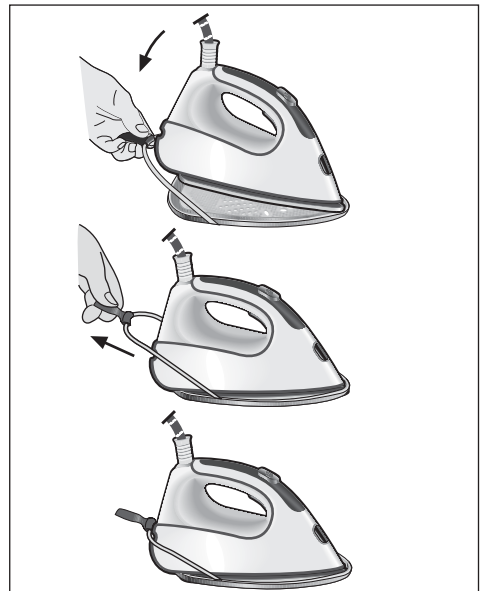
The fabric-protection soleplate cover (18\*) is used for steam-ironing delicate garments at maximum temperature without damaging them. Use of the soleplate cover also does away with the need for a cloth to prevent shine on dark materials.

It is advisable to first iron a small section on the inside of the garment to see if it is suitable.

To attach the soleplate cover to the iron, place the tip of the iron into the end of the soleplate cover and pull the elastic strap over the lower rear of the iron until it fits tightly. To release the soleplate cover, pull the elastic strap and remove the iron.

The fabric-protection soleplate cover may be purchased from our customer service or from our website.

Accessory code (After-sales)	Name of accessory (online shop)
571510	TDZ2045



\* Model dependent



## 11. Calc'nClean Perfect

### Automatic clean warning

The "Calc" automatic clean warning indicator light (4) will flash indicating that boiler and iron steam chamber must be rinsed.

Leave the appliance unplugged for more than two hours, check carefully that the appliance is cold and that the water tank (1) is empty.

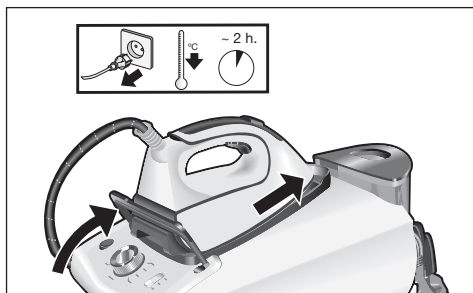
Please proceed as follows:



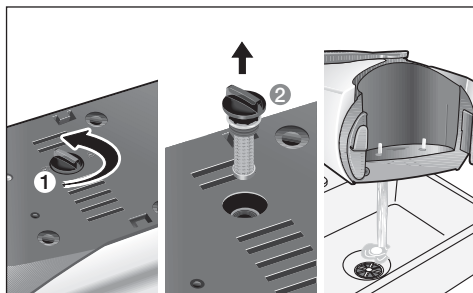
### 11.1 Cleaning the Boiler

Do not use descaling agents for rinsing out the boiler, as they could damage it.

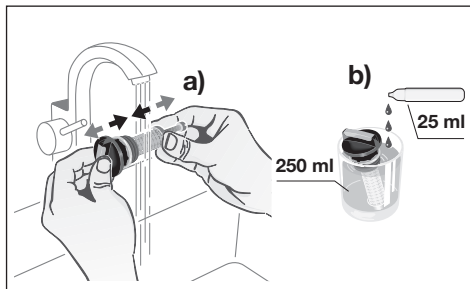
- 1 Fix the iron to the stand by inserting the tip of the iron into the front slot and moving the lock system (3) against the heel of the iron. Place your appliance on the edge of your kitchen sink.



- 2 Unscrew the scale collector (12) and take it out.



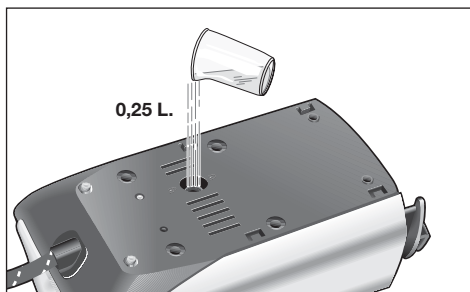
- 3 To wash the scale collector, you may:
  - a) Place the scale collector under the water tap and wash it up until calc residues are removed. Squeeze it as indicated in the picture.
  - b) Immerse the scale collector in tap water (250 ml) mixed with a measure (25 ml) of descaling fluid.



The descaling fluid can be obtained from our Aftersales Service or Specialist outlets:

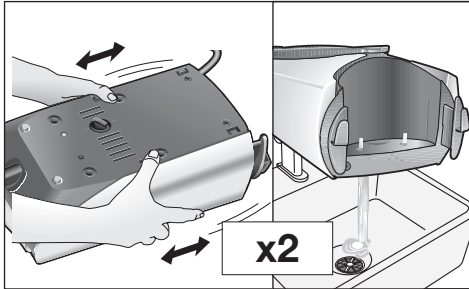
Accessory code (After-sales)	Name of accessory (Specialist outlets)
311144	TDZ1101

- 4 Holding your steam generator in upside down position, and using a jug, fill the boiler (in the base unit) with 1/4 litre of water.

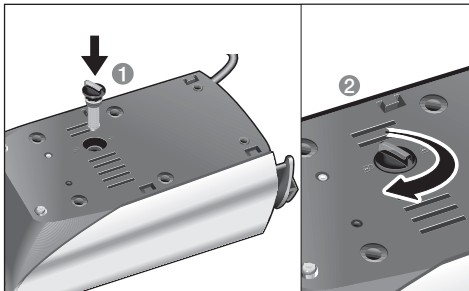


- 5 Shake the base unit for a few moments and then empty it completely over a sink or bucket. To obtain the best result, we recommend that this operation is performed twice.

**Important:** before re-closing, make sure no water remains in the boiler.

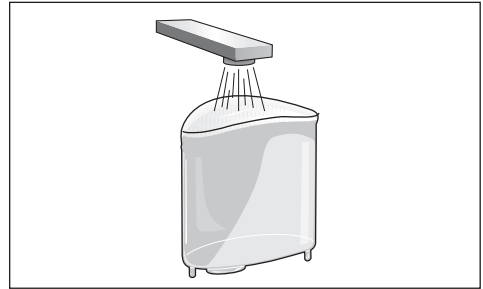


- 6 Replace and tighten up the scale collector.

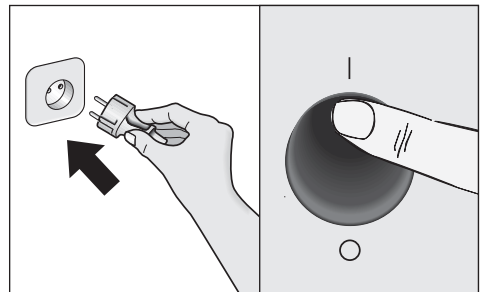


## 11.2. Rinsing the iron steam chamber

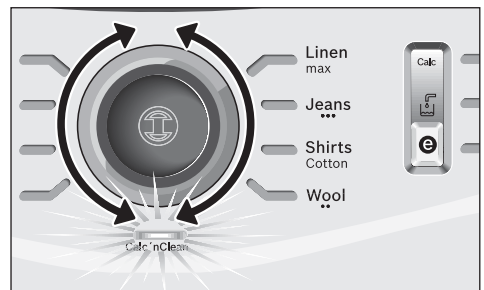
- 1 Fill the tank with tap water.



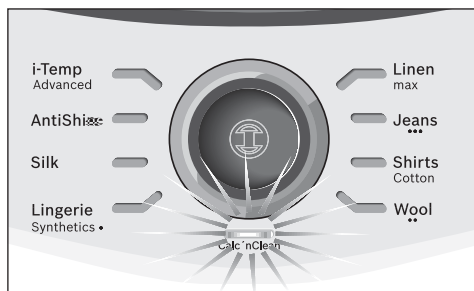
- 2 Plug in the mains cable and set the power button (10) to the "I" position.



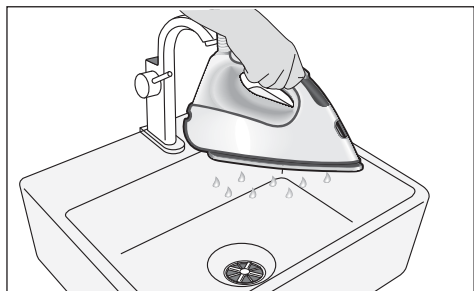
- 3 By turning the programme selector (9), choose "Calc'nClean" decalcification programme. The indicator light (7) will start flashing.



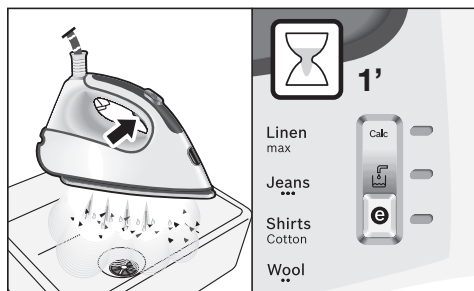
- 4 Wait until the indicator light (8) stops flashing and remains lit continuously. Two beeps will be heard at the same time.



- 5 Hold the iron over the sink or a container to collect the water.

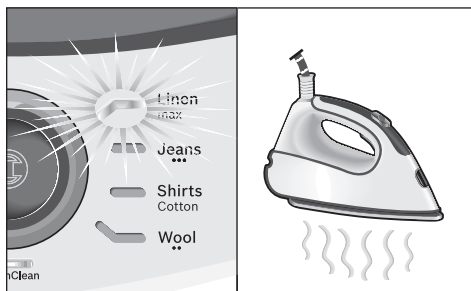


- 6 Press the steam release button (14) and gently shake the iron. Boiling water and steam will be released, carrying scale and/or deposits that might be inside. After approximately one minute, the "Calc" automatic clean warning indicator light (4) will go off.

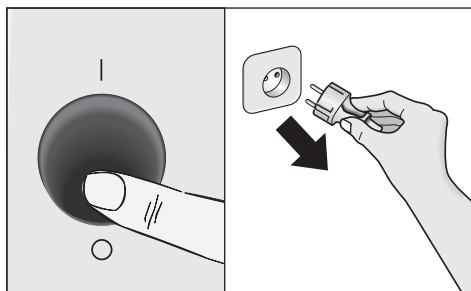


Keep on shaking the iron gently for five minutes while the steam release button is pressed, so that water and steam clean the chamber completely.

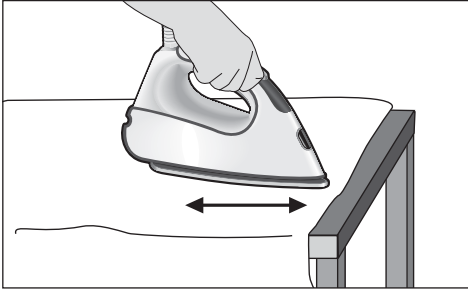
- 7 Without pressing the steam release button (14), turn the programme selector (9) and choose "Linen / max" programme. The water in the steam chamber will start evaporating.



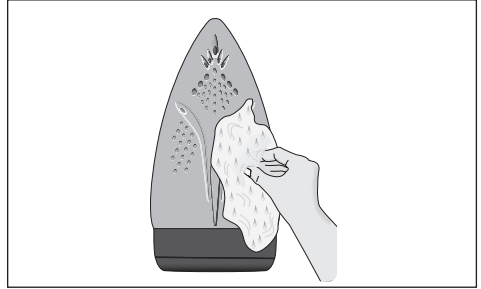
- 8 Wait until all the water inside the chamber has been evaporated. Then, you can set the power button (10) to the "O" position.



- 9 To clean the soleplate, immediately rub off any residue by running the hot iron over a wet cotton cloth.



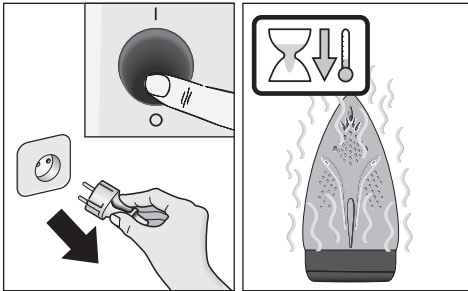
3. If the soleplate is soiled with dirt or scale, clean it with a damp cotton cloth.



## 12. Cleaning & Maintenance

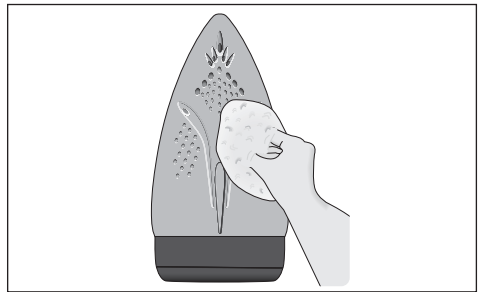
- ⚠ Attention! Risk of burns!**  
Always unplug the appliance from the mains supply before carrying out any cleaning or maintenance operation on it.

1. After ironing, pull out the plug and allow the appliance to cool down before cleaning.

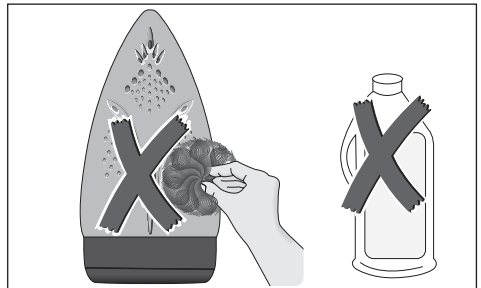


2. Wipe the housing, handle and iron body with a damp cotton cloth.

4. If the cloth is synthetic, it may melt due to the high temperature on the soleplate. Switch off the steam and rub off any residue immediately with a thickly folded, dry cotton cloth.



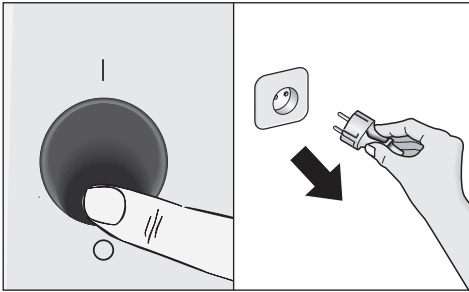
5. Never use abrasive products or solvents. To keep the soleplate smooth, you should avoid hard contact with metal objects. Never use a scouring pad, or chemicals to clean the soleplate.



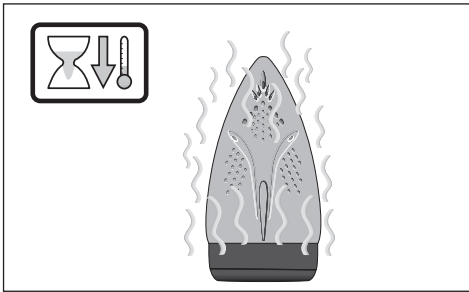


## 13. Storing the appliance

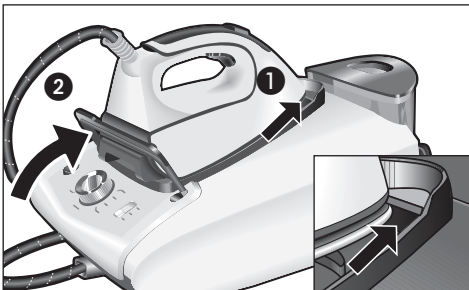
1. Set the power button to the "O" position and disconnect the mains cable.



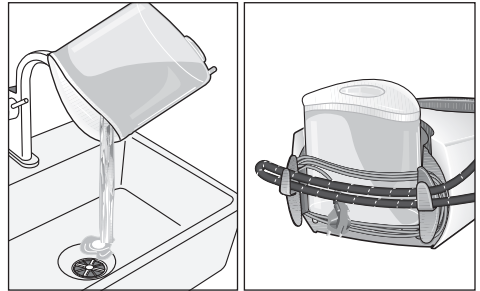
2. Always allow the appliance to cool down before storing it.



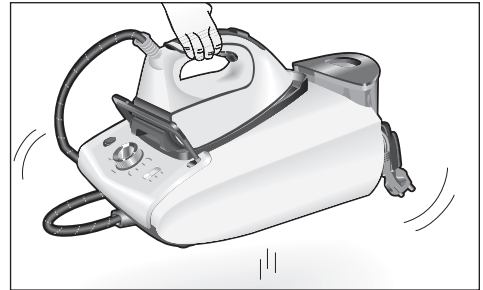
3. Place the iron on the iron pad (2), standing on the soleplate, and fix it by inserting the tip of the iron into the front slot and moving the lock system (3) against the heel of the iron.



4. Empty the water tank, store the mains cable on the cord storage facility and the steam hose in the storage fixing. Do not wrap the cords too tight.



5. Hold the iron's handle when moving the appliance.



## Tips to help you save energy

Steam production consumes the most energy. To help minimise the energy used, follow the advice below:

- Start by ironing the fabrics that require the lowest ironing temperature. Check the recommended ironing temperature on the label on the garment.
- Try to iron the fabrics while they are still damp and reduce the steam setting. Steam will be generated from the fabrics rather than the iron.
- If you tumble dry your fabrics before ironing them, set the tumble drier on the 'iron dry' programme.





## Trouble shooting

Problem	Possible causes	Solution
The "Calc" indicator light (4) flashes.	1. Boiler and iron must be rinsed.	1. Rinse the boiler and the iron according to the cleaning instructions in this manual.
The ironing programme indicator light (7) flashes continuously.	1. The water tank (1) is empty.	1. Fill the water tank.
The steam generator does not come on.	1. There is a connection problem. 2. The power button is not switched on.	1. Check the mains cable (13), the plug and the socket. 2. Set the power button (10) to the "I" position.
The iron does not heat up.	1. The power button is not switched on. 2. The temperature is set to a low position.	1. Set the power button (10) to the "I" position. 2. Set the temperature to the desired position.
The iron begins to smoke when switched on.	1. During first use: certain components on the appliance have been lightly greased at the factory and may produce a little smoke when initially heated. 2. During subsequent use: the soleplate may be soiled.	1. This is completely normal and will stop after a short while. 2. Clean the soleplate according to the cleaning instructions in this manual.
Water flows through the holes on the soleplate.	1. The water is condensing inside the pipes because steam is being used for the first time or has not been used for a long time.	1. Point the iron away from the ironing area and press the steam release button until steam is produced.
Dirt comes out through the soleplate.	1. There is a build up of scale or minerals in the boiler and iron. 2. Chemical products or additives have been used.	1. Carry out a cleaning cycle (see "Calc'nClean Perfect" section). 2. Never add products to the water. Use tap water mixed 50% with distilled or demineralised water. To prolong the optimum steam function, mix tap water with distilled water 1:1. If the tap water in your area is very hard, mix tap water with distilled water 1:2. Clean the soleplate with a damp cloth.
The iron does not produce any steam.	1. The boiler is not switched on or the water tank is empty. 2. The water tank is not fitted onto the housing correctly.	1. Set the power button (10) to the "I" position, and/or fill the water tank. 2. Fit the water tank back onto the housing correctly.
The ironed garment turns dark and/or sticks to the soleplate.	1. The selected temperature is too high and has damaged the garment.	1. Select a suitable temperature for the material being ironed and clean the soleplate with a damp cloth.

Problem	Possible causes	Solution
The soleplate turns brown.	1. This is a regular consequence of continued use over a long period of time.	1. Clean the soleplate with a damp cloth.
The appliance makes a pumping sound.	1. Water is being pumped into the steam tank. 2. The water tank is not fitted onto the housing correctly. 3. The sound will not stop.	1. This is normal. 2. Fit the water tank back onto the housing correctly. 3. If the sound will not stop, do not use the steam generator and contact an authorised technical service centre.
Loss of pressure during ironing.	1. Steam release button has been activated for too long a period of time, that is, it has been pressed too frequently.	1. Use the steam release button at intervals. This improves the ironing result as the textiles will be steamed, dried and ironed properly.
Water spots appear on the garment during ironing.	1. May be caused by steam condensed on the ironing board.	1. Wipe the textile cover of the ironing board, and iron any water drops to dry them.
Water spots appear on the garment during use of the "PulseSteam" function.	1. Water spots are caused by steam condensation in the hose when cooling down after use.	1. Water drops stop coming out of the soleplate after using the "PulseSteam" function for some time.
The hose gets hot during use.	1. This is normal. It is caused by the steam passing through the hose during steam ironing.	1. Place the hose on the opposite side so that you cannot touch the hose during ironing.
Water leakage from the boiler.	1. Scale collector (12) located at the bottom of the appliance is loose.	Tighten up the scale collector.
The iron does not stop steaming after placing it on the pad (2).	1. "PulseSteam" function has been activated.	1. Just press the trigger once again and the iron will stop steaming at once.

If the above does not solve the problem, get in touch with our customer service.

## Guarantee conditions

The terms of the guarantee for this appliance are in accordance with that stated by our representative for the country in which it is sold.

The details of these conditions can be obtained from the retailer from whom the appliance was purchased. The purchase receipt must be presented when making any claims against the terms of this guarantee.



**Customer Service**

**Great Britain**

Bosch Customer Service

Grand Union House

Old Wolverton Road Milton Keynes

MK12 5PT

UK +44 (0)344 892 8979

IRL +353 (0)1450 2655

**[www.bosch-home.co.uk](http://www.bosch-home.co.uk)**