

Solving Minor Problems Yourself

Problem	Possible Causes	Solution
The iron does not heat up.	1. Temperature control (10) set to minimum. 2. No mains supply.	1. Turn to a higher position. 2. Check with another appliance or plug the iron into a different socket.
	3. The “secure” system* has been activated (indicator light 13 flashes). The iron is set to stand-by. 4. The “SensorSecure” system* has been activated (indicator light 13 flashes). The iron is set to stand-by.	3. Move the iron gently from side to side to reactivate it. 4. Grip the handle of the iron to re-start it.
The clothes tend to stick.	1. The temperature is too high.	1. Turn the temperature control (10) down and wait until the iron has cooled down.
Water drips out of the soleplate (6) together with steam.	1. Temperature control (10) setting is too low.	1. Turn the temperature control to a higher setting (between “●●” and “max”) and wait until the pilot light (11) goes out.
	2. Steam regulator (3) is set too high in conjunction with a low temperature. 3. You have pressed the shot of steam button (2) repeatedly without waiting for 5 seconds between each press.	2. Set the steam regulator to a lower setting. 3. Wait 5 seconds between each press of the jet of steam button.
Steam does not come out.	1. Steam regulator (3) is set to “0” position. 2. The temperature is too low. Anti-drip system is activated.	1. Set the steam control to an open steam position. 2. Set to a higher temperature if compatible with the fabric.
Smoke comes out when connecting the iron for the first time.	1. This may be caused by the lubrication of some of the internal parts.	1. This is normal and will stop after a few minutes.
Deposits come out through the holes in the soleplate (6).	1. Traces of lime scale are coming out of the steam chamber.	1. Carry out a cleaning cycle (see “Calc’nClean” section).

* Model dependent

If none of the above solves the problem, get in touch with an authorised technical service.

Thank you for buying the TDA10 / TDA20 steam iron from Bosch.

These instructions contain valuable information about the unique features of this iron and some hints to make ironing easier for you. Carefully read through the operating instructions for the appliance and safeguard them for future reference.

Please visit www.bosch-home.co.uk for more product information or to register your product, just follow the link to the Online guarantee registration.

You can download this manual from the local homepages of Bosch.


General safety instructions

- The iron must not be left unattended while it is connected to the supply mains.
- Remove the plug from the socket before filling the appliance with water or before pouring out the remaining water after use.
- The appliance must be used and placed on a stable surface.
- When placed on its stand, make sure that the surface on which the stand is placed is stable.
- The iron should not be used if it has been dropped, if there are visible signs of damage or if it is leaking water. It must be checked by an authorized Technical Service Centre before it can be used again.
- With the aim of avoiding dangerous situations, any work or repair that the appliance may need, e.g. replacing a faulty mains cable, must only be carried out by qualified personnel from an Authorised Technical Service Centre.
- This appliance can be used by children aged from 8 years and above and persons with reduced physical, sensory or mental capabilities or lack of experience and knowledge if they have been given supervision or instruction concerning use of the appliance in a safe way and understand the hazards involved. Children shall not play with the appliance. Cleaning and user maintenance shall not be made by children without supervision.

**Customer Service
Great Britain**
Bosch Customer Service
Grand Union House
Old Wolverton Road Milton Keynes
MK12 5PT

UK +44 (0)344 892 8979
IRL +353 (0)1450 2655
www.bosch-home.co.uk

003 Sensixx'x DA10 / DA20 GB /07/15
9001011875

- Keep the iron and its cord out of reach of children less than 8 years of age when it is energized or cooling down.
-  **CAUTION. Hot surface.**
Surface is liable to get hot during use.
- This appliance is designed only for household use up to 2000m above sea level.

Important notices

- This appliance has been designed exclusively for domestic use and must not be used for industrial purposes.
- This appliance reaches high temperatures and produces steam during use, this could cause scalds or burns in case of improper use.
 - Do not touch the soleplate! Hold the iron by its handle.
 - Do not leave the power cable hanging over the table or ironing board, to prevent the appliance from falling.
 - Do not iron clothing while it is being worn!
 - Never spray or aim the steam at persons or animals!
- Do not allow the power cable to come into contact with sharp edges or with the soleplate when it is hot.
- Never rest the iron in a horizontal position when the soleplate is hot. Rest it on its heel.
- Do not touch the appliance with wet hands when in operation.
- This appliance is to be connected and used in accordance with the information stated on its characteristics plate.
- This appliance must be connected to an earthed socket. If it is absolutely necessary to use an extension cable, make sure that it is suitable for 16A and has a socket with an earth connection.
- In order to avoid that, under unfavourable mains conditions, phenomena like transient voltage drops or lighting fluctuations can happen, it is recommended that the iron is connected to a power supply system with a maximum impedance of 0.26Ω. If necessary, the user can ask the public power supply company for the system impedance at the interface point.
- The appliance must never be placed directly under the tap to fill the water tank.
- Unplug the appliance from the mains supply after each use, or if a fault is suspected.
- The electrical plug must not be removed from the socket by pulling the cable.
- Never immerse the iron in water or any other fluid.



Register your new Bosch now:
<http://www.bosch-home.co.uk>



Sensixx'x **DA10 / DA20**



BOSCH

en Operating instructions

- Do not leave the appliance exposed to weather conditions (rain, sun, frost, etc.).
- If the safety fuse fitted in the appliance blows, the appliance will be rendered inoperative. To restore normal operation the appliance will have to be taken to an authorised Technical Service Centre.

Tips to help you save energy

Steam production consumes the most energy. To help minimise the energy used, follow the advice below:

- Regulate the steam according to the selected ironing temperature, following the instructions in this manual.
- Try to Iron the fabrics while they are still damp and reduce the steam setting. Steam will be generated from the fabrics rather than the iron. If you tumble dry your fabrics before ironing them, set the tumble drier on the ‘iron dry’ programme.
- Stand the iron upright during pauses. Resting it horizontally with the steam regulator on generates wasted steam.

GUARANTEE TERMS

The terms of the guarantee for this appliance are in accordance with that stated by our representative for the country in which it is sold. Details of those conditions can be obtained from the retailer from whom the appliance was purchased. The SALES RECEIPT must be presented when making any claims against the terms of this guarantee. We reserve the right to make technical modifications.

Advice on disposal

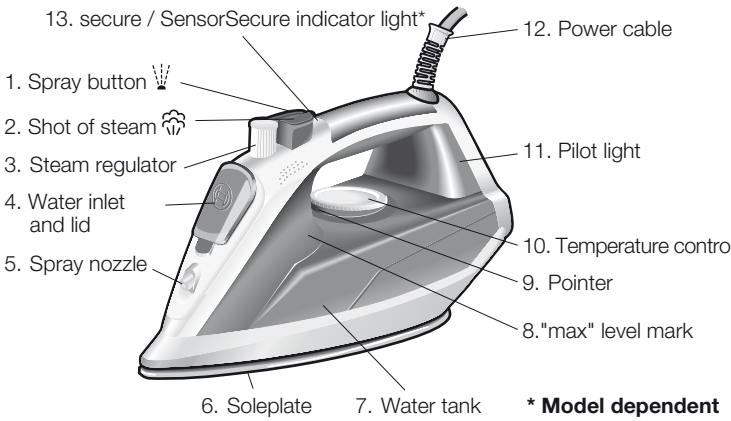
Our goods come in optimised packaging. This basically consists in using non-contaminating materials which should be handed over to the local waste disposal service as secondary raw materials. Your local town council can give you information about how to dispose of obsolete appliances.



This appliance is labelled in accordance with European Directive 2012/19/EU concerning used electrical and electronic appliances (waste electrical and electronic equipment -WEEE).

The guideline determines the framework for the return and recycling of used appliances as applicable throughout the EU.

Your iron



Before using the iron for the first time

Remove any label or protective cover from the soleplate (6).
Your new iron may smell and give off some smoke when you use it for the first time, this is normal and will cease after a short while.

Filling the water tank

This appliance has been designed to use normal tap water.

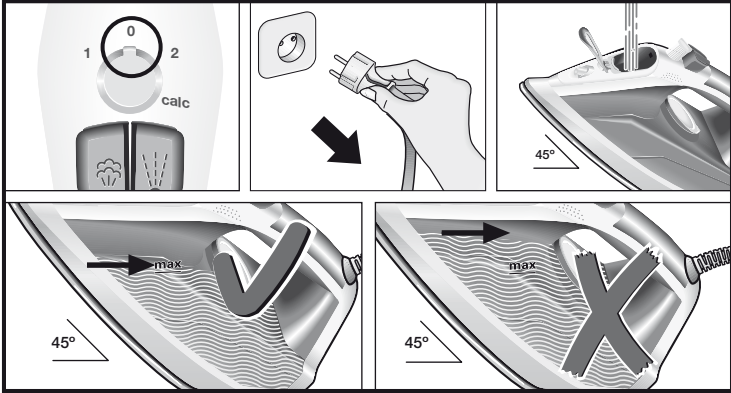
- The addition of other liquids, (unless recommended by Bosch) such as perfume, will damage the appliance.
- Do not use condensation water from tumble dryers, air conditioning systems or similar.

Any damage caused by the use of the aforementioned products will make the guarantee void.

⚠ Set the steam regulator (3) to the “0” position and unplug the iron from the mains!

- Place the iron at an angle of 45° or more, with the point facing upwards.
- Open the water inlet lid (4).
- Fill the water tank. **Never fill beyond the level mark for maximum filling (8).**
- Close the water inlet lid.

Tip: To prolong the optimum steam function, you may mix tap water with distilled water 1:1. If the tap water in your district is very hard, mix tap water with distilled water 1:2.
You can inquire about the water hardness with your local water supplier.



Setting the temperature

Check the laundry care label for the required ironing temperature.

- Set the temperature control (10) to the corresponding position by lining it up with the pointer (9) on the iron.

Fabric	Temperature Setting
Synthetics	•
Silk - Wool	••
Cotton	•••
Linen	max

- The pilot light (11) switches on while the appliance is heating up and switches off as soon as the set temperature is reached. If the temperature of the hot iron drops, you can continue ironing while the iron heats up again to the set temperature.

- Tips:**
- Sort your garments according to their care labels, always starting with clothes that have to be ironed at the lowest temperature.
 - If you are unsure what type of material the garment is made from, start ironing on the lowest temperature setting and increase accordingly. If the garment is made from mixed fabrics, set the temperature for the most delicate material.
 - For silk, woollen or synthetic materials iron the reverse side of the fabric to prevent shiny patches. Avoid using the spray function to prevent stains.

Ironing with steam

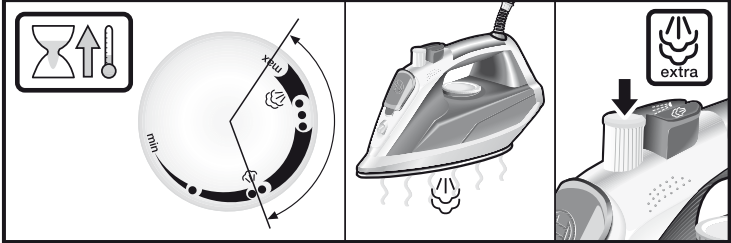
The steam regulator (3) is used to adjust the amount of steam produced when ironing.

Steam is only available if the temperature control (10) is set at the steam symbols ☁ - ☁ between “••” and “max”.

Tip: for better ironing results, iron the last strokes without steam to dry the garment.

Extra steam

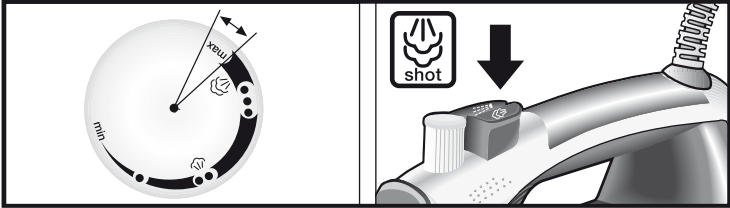
To facilitate the ironing of very creased laundry or thick materials, the volume of steam can be increased briefly.
Get extra steam by pressing the steam regulator (3) for maximum 2 seconds. To do this, set the temperature control (10) to “max”.



Shot of steam

This can be used to remove stubborn wrinkles or to press in a sharp crease or pleat.

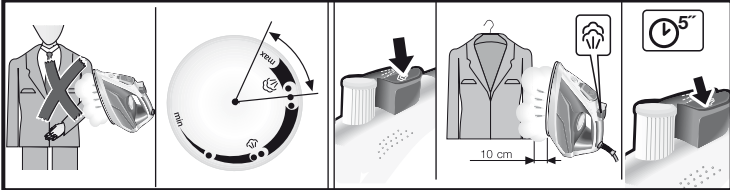
- Set the temperature control (10) to “max”.
- Press the shot of steam button ☁ (2) repeatedly with intervals of at least 5 seconds.



Vertical steam

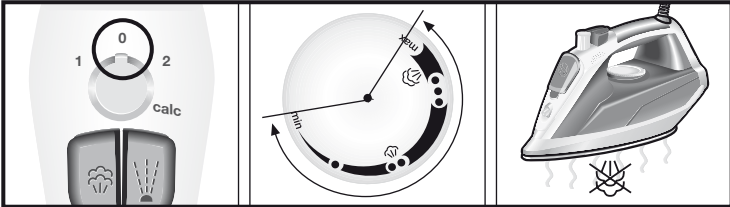
⚠ Never direct the steam jet at garments that are being worn. Never direct the steam at persons or animals!

- Set the temperature control (10) to at least the “•••” position.
- Hang article of clothing on a clothes hanger.
- Operate the iron in a vertical position at a distance of 10 cm / 4 in, and press the shot of steam button ☁ (2) repeatedly with pauses of at least 5 seconds.



Ironing without steam

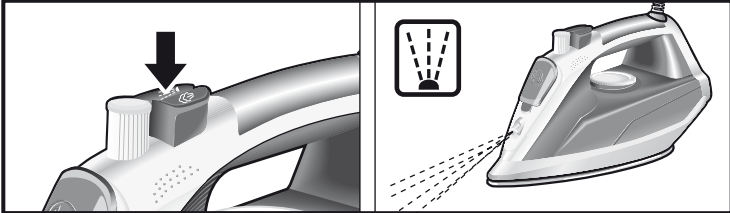
Set the steam regulator (3) to “0”.



Spray

This can be used to remove stubborn wrinkles.

Do not use the spray function with silk.

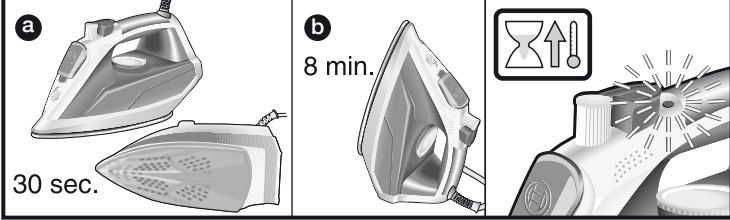


“secure” auto shut-off function *

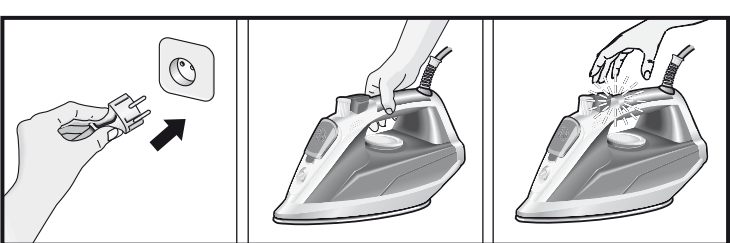
The “secure” auto shut-off function switches off the iron when it is left unattended, thus increasing security and saving energy.

If your iron is equipped with “secure” function, you can find the text “auto off” on handle.

- Plug in the iron.
- Initial heating up process: this function will be inactive for the first two minutes in order to give the appliance time to reach the set temperature.
- The safety circuit will switch the appliance off automatically and the indicator light (13*) will start flashing in the following cases:
 - a** If the iron is not moved for 30 seconds while resting on its soleplate or on its side.
 - b** If the iron is not moved for 8 minutes while in the upright position.
- To reconnect the iron, just move it about gently.



“SensorSecure” function *



The “SensorSecure” function makes the iron heat up only while ironing. Thus, safety and saving energy get increased.

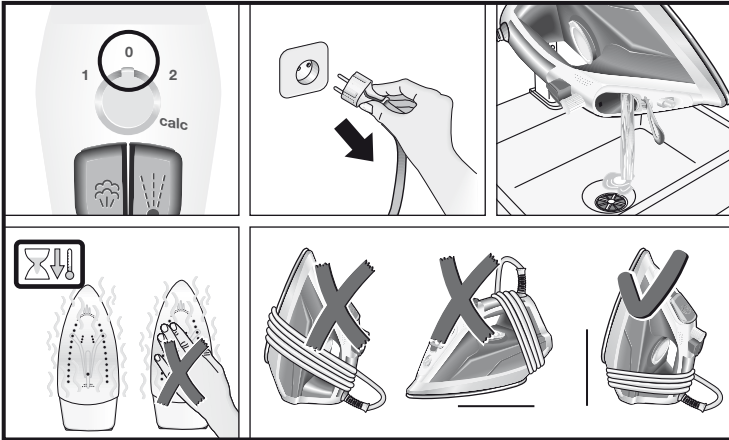
- Plug in the iron.
- “SensorSecure” indicator light (13*) flashes while resting, and will show a continuous light while ironing.
- If the iron is resting for more than 12 seconds, the iron will stop heating automatically.
- Once ironing is restarted, the iron will heat up again.

Initial heating up process: it is not necessary to grip the handle until the iron heats up to the set temperature. During heating, the “SensorSecure” light flashes at a high frequency. Once set temperature is reached, the light will flash at a lower frequency.

After ironing

- Set the steam regulator (3) to the “0” position.
- Unplug the iron from the mains socket.
- Hold the iron with the front facing down and shake it gently until the water tank is empty.
- Set the iron aside in a vertical position to cool down.
- Coil the power cable (12) loosely around the heel of the iron, before storing. Depending on the model, the cable can be inserted into the clip located at the bottom of the back cover.

Tip: Store the iron in an upright position.



Cleaning & Maintenance

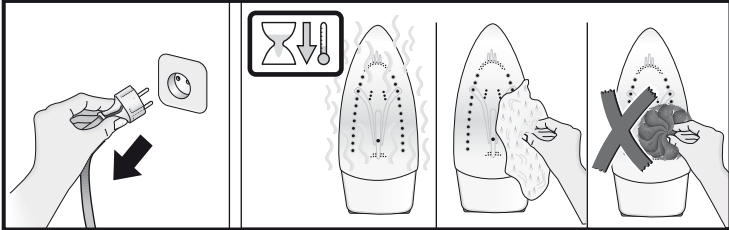
⚠ Attention ! Risk of burns !
Always unplug the appliance from the mains supply before carrying out any cleaning or maintenance operation on it.

- If the iron is only slightly soiled, pull out the plug and allow the soleplate to cool down. Wipe the housing and the soleplate with a damp cotton cloth only.
- If the cloth is synthetic, it may melt due to the high temperature on the soleplate. Switch off the steam and rub off any residue immediately with a thickly folded, damp cotton cloth.
- To keep the soleplate smooth, you should avoid hard contact with metal objects. Never use a scouring pad, or chemicals to clean the soleplate.

DO NOT de-scale or clean the water tank with cleaning products or solvents, as these could cause the iron to drip when using the steam function.

DO NOT use a “professional steam cleaner” for cleaning the appliance.

DO NOT use sharp objects or abrasive products to clean the soleplate or any other part of the appliance. To keep the soleplate in good condition, do not allow it to come into contact with metal objects.



Multiple descaling system

A. self-clean

Each time you press the steam regulator (3), the “self-clean” system cleans the mechanism of scale deposits.

B. Calc'nClean

The “Calc'nClean” function helps to remove scale particles out of the steam chamber.

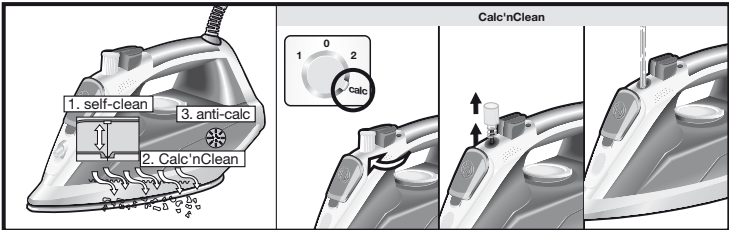
Use this function approximately every 2 weeks if the water in your area is very hard.

- Set the temperature control to the “max” position and plug in the iron.
- After the necessary warm-up period, unplug the iron.
- Hold the iron over a sink and remove the steam regulator (3) by turning it to the “calc” position.
- Slowly pour water (approximately 300 ml) into the steam regulator hole.
- Gently shake the iron. Boiling water and steam will come out of the soleplate (6) carrying scale or deposits that might be there. When the iron stops dripping, reassemble the steam regulator by reinserting it, lining up the “calc” position with the pointer (9), pressing it in and turning it to the “0” position.
- Plug in the iron. Heat up the iron again until the remaining water has evaporated.

Tip: If the steam regulator needle is soiled, remove any deposits from the tip with vinegar and rinse it off with clean water.

C. anti-calc *

The “anti-calc” cartridge has been designed to reduce the build-up of scale produced during steam ironing, helping to extend the useful life of your iron. Nevertheless the “self-clean” cartridge cannot remove all of the scale that is produced naturally over time.



* Model dependent