

Your washing machine

Congratulations - You have opted for a modern, high-quality domestic appliance manufactured by Bosch. The washing machine is distinguished by its economical water and energy consumption. Each machine that leaves our factory has been inspected thoroughly to ensure that it functions properly and is in perfect condition.

Further information: www.bosch-home.com

You can find the contact details for your nearest after-sales service here or in the after-sales service directory (depending on model).
GB 0844 8928979

Calls from a BT landline will be charged at up to 3 pence per minute. A call set-up fee of up to 6 pence may apply.
IE 01450 2655

0.03 € per minute at peak. Off peak 0.0088 € per minute.

Environmentally friendly waste disposal

Dispose of packaging in an environmentally-responsible manner. This appliance is labelled in accordance with European Directive 2012/19/EU concerning used electrical and electronic appliances (waste electrical and electronic equipment - WEEE).

The guideline determines the framework for the return and recycling of used appliances as applicable throughout the EU.

Contents

Intended use	1
Programmes	1
Setting and adjusting the programme	3
Washing	3/4
After washing	4
Individual settings	5/6
Important information	6
Overview of programmes	7
Safety instructions	8
Consumption values	8
Care	9
Information on the display panel	9
Maintenance	10
What to do if...	11

Protection of the environment/Conservation tips

- Always fill the washing machine with a maximum amount of laundry for the relevant programme.
- Wash normally soiled laundry without a pre-wash.
- The selectable temperatures apply to the care labels on the textiles. The temperatures in the machine may deviate from this so that you get the optimum mix of energy-saving and washing results.
- Measure the detergent according to the manufacturer's instructions and water hardness.
- If the laundry is then dried in the tumble dryer, select the spin speed according to the instructions of the dryer manufacturer.

Intended use

- for domestic use only,
- for washing machine-washable fabrics and hand-washable wool in detergent solution,
- to be operated with cold drinking water and commercially available detergents and care products which are suitable for use in washing machines.

- Do not leave children unattended near the washing machine.
- The washing machine is not to be used by children or persons not familiar with the operating instructions.
- Keep pets away from the washing machine.

Read these instructions and the separate installation instructions before operating the washing machine.

Preparation

Correct installation according to the separate Installation instructions.

Checking the machine
 - Never use a damaged machine.
 - Inform customer service.

Connecting the mains plug
 Make sure your hands are dry. Take hold of the plug only.

Turning the tap on

Sorting and loading laundry

Follow the manufacturer's care information. According to the information on the care labels. According to type, colour, soiling and temperature. Do not exceed the maximum load → page 7.

Observe the important information → page 6. Insert large and small items of laundry. Take care not to trap items of laundry between the washing machine door and the rubber seal.

Add detergent and care products

Measure accordingly: Amount of laundry, soiling, water hardness (ask your water supply company) and manufacturer's instructions. Pour liquid detergent into the appropriate dispenser and place in the drum.

Dilute viscous fabric softener and fabric conditioner with water. This prevents blockages.

Washing

Before washing for the first time Wash once without any laundry → page 9.

Remove any foreign objects - risk of rusting. Leave the washing machine door and detergent drawer open so that any residual water can evaporate.

Turning the tap off Not required for Aqua-Stop models → Refer to installation instructions

Switching off Turn the programme selector to **Off**.

End of programme when ... (Start/Reload) flashes and -0- appears on the display panel.

Interrupting the programme Programmes at high temperatures: Cool washing: Choose **Rinse**. Press (Start/Reload). Programmes at lower temperatures: Choose **Spin** or **Empty**. Press (Start/Reload).

Changing the programme, if ... you have selected the wrong programme by mistake: Reselect the programme. Press (Start/Reload). The new programme starts from the beginning.

Reloading laundry, if ... Press (Start/Reload) both the symbols **YES** and **+ 0** are lit in the display panel. If **NO** is lit, the washing machine door cannot be opened. Press (Start/Reload).

Individual settings

Options buttons You can change the spin speed and the temperature before the selected programme starts and while it is running. The effects depend on the programme progress.

(Temperature °C) You can change the displayed washing temperature. The maximum selectable temperature depends on the current programme.

(Finished in) When you select the programme, the relevant programme duration is displayed. You can delay the start of the programme before it begins. The "Finished in" time can be set in increments of one hour up to a maximum of 24 hours. Press the **(Finished in)** button repeatedly until the required number of hours is displayed (h = hour). Choose (Start/Reload).

(Spin speed in rpm / without final spin) You can change the displayed spin speed. The maximum selectable spin speed depends on the model and on which programme is currently selected.

Additional functions → and overview of programmes, see page 7

SpeedPerfect For washing in a shorter time with a washing outcome comparable to that of the standard programme. Maximum load → Overview of programmes, page 7.

EcoPerfect Energy-optimised washing by reducing the temperature while achieving a consistent washing result. The washing temperature is lower than the selected temperature. For special hygiene requirements, the **Allergy+** programme is recommended → page 7.

(Easy-iron) Special spin sequence with subsequent fluffing. More gentle final spin - residual moisture in the laundry slightly increased.

(Water Plus) Increased water level and additional rinse cycle, extended washing time. For areas with very soft water or for further enhancing the spin result.

Childproof lock and reloading You can lock the washing machine to prevent the functions you have set from being changed inadvertently. **ON/OFF:** Press and hold the (Start/Reload) button for 5 seconds after the start/end of the programme. Note: The childproof lock can remain activated until you wish to start the next programme, even after switching off the machine. Then you can deactivate the childproof lock before the start of the programme and activate it again as necessary once the programme has started.

YES + 0 Reload If you want to add additional items of laundry after the programme has started, choose (Start/Reload). The machine checks whether reloading is possible. **YES + 0** illuminated: Reloading is possible. **NO** flashes: wait until **YES + 0** light up. Note: do not open the door until both the **YES + 0** symbols are lit. **NO:** It is not possible to reload. Note: For safety reasons, the washing machine door remains locked when the water level and/or temperature is high, or during spinning. To continue the programme, press the (Start/Reload) button.

(Start/Reload) To start the programme or to subsequently load additional laundry, and to activate/deactivate the childproof lock.

Individual settings

Signal 1. Activating the mode for setting the signal volume

2. Setting the volume for ...

Button signals Information signals

Setting the volume* Setting the volume*

Important information

Protecting the laundry and the machine - When determining the dosage of all washing powders, additives and cleaning agents, you must follow the manufacturer's instructions.

Laundry with varying degrees of soiling Wash new items of clothing separately.

Soaking Load laundry of the same colour Pour soaking agent/detergent into compartment II in accordance with the manufacturer's instructions. Turn the programme selector to **Cottons 30 °C** and press (Start/Reload). After approx. 10 minutes, press (Start/Reload) to pause the programme. Once the required soaking time has elapsed, press (Start/Reload) again to continue the programme, or select a different programme.

Starch Starching is possible in all wash programmes if liquid starch is used. Pour the starch in accordance with the manufacturer's instructions into fabric softener compartment (rinse first if necessary).

Dye/Bleach Dye should only be used in normal household quantities. Salt may damage stainless steel. Always follow the dye manufacturer's instructions! Do not use the washing machine for bleaching clothes!

Programmes	°C	max.	Type of laundry
⌚ Cottons + ⌚ Prewash	90 °C	7 kg/ 4 kg*	Hard-wearing fabrics, heat-resistant fabrics made of cotton or linen
⌚ AllergyPlus	60 °C		Hard-wearing fabrics made of cotton or linen
⌚ Easy-Care + ⌚ Prewash	60 °C		Easy-care fabrics made of cotton, linen, synthetic fibres or blended fabrics
⌚ Mix	40 °C	3 kg	Fabrics made of cotton or easy-care fabrics
⌚ Easy-Care +	40 °C		Fabrics made of cotton and dark easy-care fabrics
⌚ Delicate / Silk	40 °C		Dark-coloured fabrics made of cotton and dark easy-care fabrics
⌚ Wool	40 °C		For delicate, washable fabrics, e.g. made of silk, satin, synthetic fibres or blended fabrics (e.g. curtains)
⌚ SuperQuick 15'	40 °C	2 kg	Hand- or machine-washable fabrics made of wool or containing wool
⌚ Sportswear	40 °C		Easy-care fabrics made of cotton, linen, synthetic fibres or blended fabrics

Additional programmes
 * Reduced load for additional **⌚ SpeedPerfect** function.
 † As a **short programme**, **⌚ Mix 40 °C**, with a **maximum spin speed**, is ideal.
 ‡ Programmes without pre-wash - add detergent to compartment **II**; programmes with pre-wash - distribute the detergent between compartments **I** and **II**.



Robert Bosch Hausgeräte GmbH
 Carl-Wery-Str. 34
 81739 München / Germany

WAE24469BY...

! Safety instructions

- Read the instruction manual and installation instructions and all other information enclosed with the washing machine and act accordingly.
- Retain the documents for subsequent use.

Risk of electric shock

- Never pull the cable to disconnect the mains plug.
- Never insert/disconnect the mains plug with damp hands.

Danger to life

For worn-out appliances:

- Disconnect the mains plug.
- Sever the mains cable and discard along with the plug.
- Destroy the lock on the washing machine door. This will prevent children from locking themselves in and risking their lives.

Danger of suffocation

- Keep packaging, film and packaging parts out of the reach of children.

Risk of poisoning

- Keep detergents and care products out of the reach of children.

Risk of explosion

- Items of laundry pretreated with cleaning agents containing solvents, e.g. stain remover / cleaning solvent may lead to an explosion after being loaded into the washing machine.
- Rinse items of laundry thoroughly by hand beforehand.

Risk of injury

- The washing machine door can become very hot.
- Be careful when draining hot detergent solution.
- Do not climb onto the washing machine.
- Do not lean on the open washing machine door.
- Do not reach into the drum if it is still rotating.
- Be careful when opening the detergent drawer while the machine is in operation.

Consumption values

depending on model

Programme	Load	Electricity**	Water**	Programme duration**
⌚ Cottons 20 °C	7 kg	0,31 kWh	72 l	2 ¾ h
⌚ Cottons 40 °C	7 kg	0,85 kWh	72 l	2 ¾ h
⌚ Cottons 60 °C	7 kg	1,21 kWh	72 l	2 ¾ h
⌚ Cottons 90 °C	7 kg	2,01 kWh	77 l	3 h
⌚ Easy-Care 40 °C	3 kg	0,64 kWh	56 l	1 ¾ h
⌚ Mix 40 °C	3 kg	0,46 kWh	36 l	1 ¼ h
⌚ Delicate / Silk 30 °C	2 kg	0,24 kWh	37 l	¾ h
⌚ Wool 30 °C	2 kg	0,22 kWh	47 l	¾ h

Programme	Additional function	Load	Annual energy consumption	Annual water consumption
⌚ Cottons 40 / 60 °C	⌚ EcoPerfect*	3,5/7 kg	165 kWh	10686 l

* Programme setting for testing and energy labelling in accordance with EU directive 2010/30/EU with cold water (15 °C).
 ** The values deviate from the indicated values depending on water pressure, hardness, and inlet temperature, ambient temperature, type, amount and soiling of the laundry, detergent used, fluctuations in the power supply and selected additional functions.

Care

Before washing for the first time

Do not load any laundry into the machine. Turn on the tap. Add the following to compartment **II**:

- approx. 1 litre water
- detergent (dosage according to the manufacturer's instructions for light soiling and the appropriate degree of water hardness)

Set the programme selector to **⌚ Easy-Care 60 °C** and select **⌚ (Start/Reload)**. At the end of the programme, turn the programme selector to **Off**.

Machine housing, control panel

- Wipe with a soft, damp cloth.
- Do not use any abrasive cloths, scourers or cleaning agents (stainless steel cleaners).
- Remove detergent and cleaning agent residue immediately.
- Do not clean with a jet of water.

Cleaning the detergent drawer and housing...

... if it contains detergent or fabric softener residues.

- Pull the drawer out, press down the insert and fully remove the drawer from the housing.
- To remove the insert: press the insert upwards from below with your finger.
- Clean the detergent dispenser tray and insert with water and a brush and dry it. Also remove any detergent or fabric softener residues in the housing.
- Attach the insert and engage (connect the cylinder to the guide pin).
- Push in the detergent drawer.

Washing drum and rubber seal

Wipe the inside of the rubber seal dry with a cloth. Leave the washing machine door open so that the drum can dry out. Rust stains - use chlorine-free cleaning agent, not steel wool.

Descaling Ensure there is no laundry in the machine

Descal the appliance according to the descaler manufacturer's instructions. This should not be necessary if the correct dosage of detergent is used.

Emergency release, e.g. in the event of a power cut

The programme continues to run when the power has been restored. However, if the laundry has to be removed, the washing machine door can be opened as follows:

Risk of scalding.
 The detergent solution and laundry may be hot. If possible, leave it to cool down.
 Do not reach into the drum if it is still rotating.
 Do not open the washing machine door if water can be seen through the glass.

- Turn the programme selector to **Off** and disconnect the mains plug.
- Drain the detergent solution → **page 10**.
- Pull the emergency release downwards with a tool and release. Washing machine door can then be opened.

Information on the display panel

depending on model

F: 16	Close the washing machine door properly; laundry may be caught.
F: 17	Open the tap completely, supply hose kinked or trapped; Clean the filter → page 10 , Water pressure too low.
F: 18	Detergent solution pump blocked; Clean the detergent solution pump → page 10 . Drainage hose / waste pipe blocked; Clean the drainage hose at the siphon → page 10 .
F: 21	Motor fault. Call customer services.
F: 23	Water in the base tub, appliance leaking. Call customer services.

Maintenance

Detergent solution pump

Turn the programme selector to **Off** and disconnect the mains plug.

- Open and remove the service flap.
- For models with a drainage hose:** Remove the drainage hose from the retainer and pull it from the housing. Remove the container. Remove the sealing cap, allow the detergent solution to flow out. Replace the sealing cap and place the drainage hose in the retainer.
- For models without a drainage hose:** Carefully unscrew the pump cover until the detergent solution begins to flow out. When the service flap is half full, close the pump cover and empty the service flap. Repeat the above steps until all the detergent solution has completely drained out.
- Carefully unscrew the pump cover (residual water).
- Clean the interior, pump cover thread and pump housing (the impeller in the detergent solution pump must rotate).
- Replace the pump cover and screw it tightly.
- Place the service flap back on and close.

To prevent unused detergent from flowing straight into the drain during the next wash: Pour 1 litre of water into compartment **II** and start the **⌚ Empty** programme.

Drainage hose at the siphon

Turn the programme selector to **Off** and disconnect the mains plug.

- Loosen the hose clamp, carefully remove the drainage hose (residual water).
- Clean the drainage hose and siphon connecting piece.
- Reattach the drainage hose and secure the connection with the hose clamp.

Filter in the water supply

Risk of electric shock
 Do not immerse the HydroSafe safety device in water (contains an electric valve).

Reduce the water pressure in the supply hose:

- Turn off the tap.
- Select any programme (apart from **⌚ Spin / ⌚ Empty**).
- Choose **⌚ (Start/Reload)**. Let the programme run for approximately 40 seconds.
- Turn the programme selector to **Off**. Disconnect the mains plug. Clean the filter:

and/or for Standard and Aqua-Secure models:

Remove the hose on the rear of the appliance, Remove the filter with pliers and clean.

- Connect the hose and check for leaks.

What to do if ...

Water is leaking out.	<ul style="list-style-type: none"> Attach/replace the drainage hose correctly. Tighten the screw connection of the supply hose.
No water supply. Detergent not dispensed.	<ul style="list-style-type: none"> ⌚ (Start/Reload) not selected? Tap not turned on? Filter blocked? Clean the filter → page 10. Supply hose kinked or trapped?
Washing machine door cannot be opened.	<ul style="list-style-type: none"> Safety function active. Programme stopped? → page 4. ⌚ (without final spin) selected? → page 3, 4. Can be opened by emergency release only? → page 9.
Programme does not start.	<ul style="list-style-type: none"> ⌚ (Start/Reload) or ⌚ (Finished in) time selected? Washing machine door closed? Childproof lock active? Deactivate → page 5.
Detergent solution is not drained.	<ul style="list-style-type: none"> ⌚ (without final spin) selected? → page 3, 4. Clean the detergent solution pump → page 10. Clean the waste pipe and/or drainage hose.
Water not visible in the drum.	<ul style="list-style-type: none"> Not a fault - water below the visible area.
Unsatisfactory spin result. Laundry wet/too damp.	<ul style="list-style-type: none"> Not a fault - the unbalanced-load detection system has cancelled the spin cycle because of uneven distribution of the laundry. Distribute small and large items of laundry evenly inside the drum. ⌚ (Easy-iron) selected? → page 5. Selected speed too low? → page 5.
The programme duration changes during the wash cycle.	<ul style="list-style-type: none"> Not a fault - the programme sequence is optimised for the particular wash process. This may result in changes to the programme duration in the display field.
Spin cycle performed several times.	<ul style="list-style-type: none"> Not a fault - unbalanced load detection system adjusts the imbalance.
Residual water in the compartment for care products.	<ul style="list-style-type: none"> Not a fault - the action of the care product is not affected. Clean the insert if necessary → page 9.
Odour formation in the washing machine.	<ul style="list-style-type: none"> Run programme ⌚ Cottons 90 °C without laundry. Use standard detergent.
Status display ⌚ flashes. Foam may be coming out of the detergent drawer.	<ul style="list-style-type: none"> Too much detergent used? Mix 1 tablespoon of fabric softener with ½ litre of water and pour into dispenser II (not for outdoor and down-filled textiles!). Reduce the detergent dosage for the next wash cycle.
Intense noise formation, vibrations and "wandering" during the spin cycle.	<ul style="list-style-type: none"> Are the appliance feet fixed? Secure the appliance feet → Installation instructions. Transportation safety devices removed? Remove the transportation safety devices → Installation instructions.
Noises during spin and drain cycles.	<ul style="list-style-type: none"> Clean detergent-solution pump → page 10.
Display panel/indicator lamps do not function during operation.	<ul style="list-style-type: none"> Power cut? Fuses triggered? Reset/change the fuse. If the fault occurs repeatedly, call customer services.
Programme sequence longer than usual.	<ul style="list-style-type: none"> Not a fault - unbalanced load detection system adjusts imbalance by repeatedly distributing the laundry. Not a fault - foam detection system active - adds an additional rinse cycle.
Detergent residues on the laundry.	<ul style="list-style-type: none"> Occasionally, phosphate-free detergents contain water-insoluble residues. Use the ⌚ Rinse cycle or brush out the laundry after washing.

If you cannot correct a fault yourself (switching on/off) or a repair is required:

- Turn the programme selector to **Off** and remove the mains plug from the socket.
- Turn off the water supply and call customer services → **Installation instructions**.

Register your new Bosch now:
www.bosch-home.com/welcome

Washing machine WAE24469BY

en operating instructions

Before washing for the first time
Wash once without any laundry → page 9.

Sorting and loading laundry

Follow the manufacturer's care information. According to the information on the care labels. According to type, colour, soiling and temperature. Do not exceed the maximum load → page 7.

Observe the important information → page 6. Insert large and small items of laundry.

Close the washing machine door. Take care not to trap items of laundry between the washing machine door and the rubber seal.

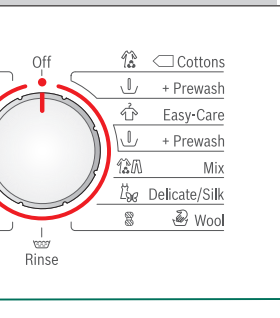
Add detergent and care products

Measure accordingly: Amount of laundry, soiling, water hardness (ask your water supply company) and manufacturer's instructions. Pour liquid detergent into the appropriate dispenser and place in the drum.

i Dilute viscous fabric softener and fabric conditioner with water. This prevents blockages.

Setting** and adjusting programmes

Programme selector



i **If the symbol flashes in the display panel, the childproof lock is active → deactivate, page 5.

Additional functions and options buttons → Individual settings, page 5.

i All buttons are sensitive and need only to be touched lightly. If the buttons are held for longer, the appliance automatically runs through the setting options.

Press (Start/Reload)

i Programme selector for switching the machine on and off and for selecting the programme. Can be turned in either direction.

tion or end (-0-)

load laundry → page 4, 5

Washing

Detergent drawer with compartments I, II,

Drum

Control panel

Washing machine door

Service flap

Washing



Removing the washing

Open the washing machine door and remove the washing. If (without final spin) is active: Turn programme selector to **Empty** or select the spin speed. Choose (**Start/Reload**).



- Remove any foreign objects - risk of rusting.
- Leave the washing machine door and detergent drawer open so that any residual water can evaporate.



Turning the tap off

Not required for Aqua-Stop models → Refer to installation instructions



Switching off

Turn the programme selector to **Off**.

1

End of programme when ...

... (Start/Reload) flashes and **-0-** appears on the display panel.

2

Interrupting the programme

Programmes at high temperatures:

- Cool washing: Choose **Rinse**.
- Press (**Start/Reload**).

Programmes at lower temperatures:

- Choose **Spin** or **Empty**.
- Press (**Start/Reload**).

3

Changing the programme, if ...

... you have selected the wrong programme by mistake:

- Reselect the programme.
- Press (**Start/Reload**). The new programme starts from the beginning.

Reloading laundry, if ... → page 5

... Press (**Start/Reload**) both the symbols **YES** and **+** are lit in the display panel. If **NO** is lit, the washing machine door cannot be opened.

- Press (**Start/Reload**).

Individual settings

Options buttons

You can change the spin speed and the temperature before the selected programme starts and while it is running. The effects depend on the programme progress.

⌄ (Temperature °C)

You can change the displayed washing temperature. The maximum selectable temperature depends on the current programme.

🕒 (Finished in)

When you select the programme, the relevant programme duration is displayed. You can delay the start of the programme before it begins. The "Finished in" time can be set in increments of one hour up to a maximum of 24 hours. Press the 🕒 (**Finished in**) button repeatedly until the required number of hours is displayed (h = hour). Choose ▶️ (Start/Reload).

🌀 (Spin speed in rpm / without final spin)

You can change the displayed spin speed. The maximum selectable spin speed depends on the model and on which programme is currently selected.

Additional functions → and overview of programmes, see page 7

⚡ **SpeedPerfect** For washing in a shorter time with a washing outcome comparable to that of the standard programme. Maximum load → Overview of programmes, page 7.

🌿 **EcoPerfect** Energy-optimised washing by reducing the temperature while achieving a consistent washing result. The washing temperature is lower than the selected temperature. For special hygiene requirements, the 🧼 **Allergy+** programme is recommended → page 7.

🌀 (Easy-iron) Special spin sequence with subsequent fluffing. More gentle final spin - residual moisture in the laundry slightly increased.

💧 (Water Plus) Increased water level and additional rinse cycle, extended washing time. For areas with very soft water or for further enhancing the spin result.

Childproof lock and reloading

🔒 **Childproof lock/ Appliance lock** You can lock the washing machine to prevent the functions you have set from being changed inadvertently.

ON/OFF: Press and hold the ▶️ (Start/Reload) button for 5 seconds after the start/end of the programme.

Note: The childproof lock can remain activated until you wish to start the next programme, even after switching off the machine.

Then you can deactivate the childproof lock before the start of the programme and activate it again as necessary once the programme has started.

YES + 🔄 **Reload** If you want to add additional items of laundry after the programme has started, choose ▶️ (Start/Reload). The machine checks whether reloading is possible.

YES + 🔄 illuminated: Reloading is possible.

NO flashes: wait until **YES + 🔄** light up.

Note: do not open the door until **both** the **YES + 🔄** symbols are lit.

NO: It is not possible to reload.

Note: For safety reasons, the washing machine door remains locked when the water level and/or temperature is high, or during spinning.

To continue the programme, press the ▶️ (**Start/Reload**) button.

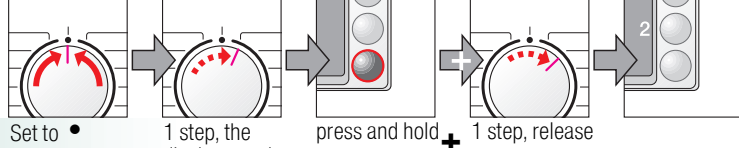
▶️ (Start/Reload)

To start the programme or to subsequently load additional laundry, and to activate/deactivate the childproof lock.

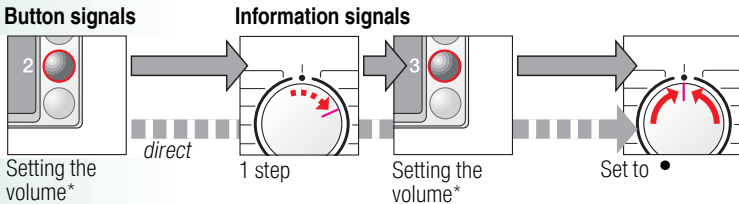
Individual settings

Signal

1. Activating the mode for setting the signal volume



2. Setting the volume for ...



* you may need to select the function several times.

Important information

Protecting the laundry and the machine

- When determining the dosage of all washing powders, additives and cleaning agents, you must follow the manufacturer's instructions.
- Empty pockets.
- Look out for metal items (paperclips, etc.).
- Wash delicates in a laundry bag (tights, curtains, underwired bras).
- Fasten zips, do up any buttons.
- Brush sand out of pockets and collars.
- Remove curtain fittings or place in the laundry bag.

Laundry with varying degrees of soiling

light	Wash new items of clothing separately. Do not pre-wash. If required, choose the additional function ⚡ SpeedPerfect .
intense	Pre-treat any stains as necessary. Do not load as much laundry. Choose a programme with a prewash.

Soaking Load laundry of the same colour

Pour soaking agent/detergent into compartment **II** in accordance with the manufacturer's instructions. Turn the programme selector to 🌀 **Cottons 30 °C** and press ▶️ (**Start/Reload**). After approx. 10 minutes, press ▶️ (Start/Reload) to pause the programme. Once the required soaking time has elapsed, press ▶️ (**Start/Reload**) again to continue the programme, or select a different programme.

Starch Laundry should not be treated with fabric softener.

Starching is possible in all wash programmes if liquid starch is used. Pour the starch in accordance with the manufacturer's instructions into fabric softener compartment 🌀 (rinse first if necessary).

Dye/Bleach

Dye should only be used in normal household quantities. Salt may damage stainless steel. Always follow the dye manufacturer's instructions! Do **not** use the washing machine for bleaching clothes!

Overview of Programmes → Refer to the table of consumption values on page 8 and notes on page 6.



Additional functions; information

Programmes °C max.

Type of laundry

Cottons + Prewash	7 kg/ 4 kg*	Hard-wearing fabrics, heat-resistant fabrics made of cotton or linen	SpeedPerfect*, EcoPerfect, (Easy-iron), (Water Plus)
AllergyPlus		Hard-wearing fabrics made of cotton or linen	SpeedPerfect*, EcoPerfect, (Easy-iron), (Water Plus); for particularly sensitive skin, longer wash cycle at selected temperature, higher water level, additional rinse cycle
Easy-Care + Prewash	3 kg	Easy-care fabrics made of cotton, linen, synthetic fibres or blended fabrics	SpeedPerfect, EcoPerfect, (Easy-iron), (Water Plus)
Mix		Fabrics made of cotton or easy-care fabrics	SpeedPerfect, EcoPerfect, (Easy-iron), (Water Plus); different types of laundry can be washed together
Easy-Care +		Dark-coloured fabrics made of cotton and dark easy-care fabrics	SpeedPerfect, EcoPerfect, (Easy-iron), (Water Plus); Reduced rinse and final spin cycle
Delicate / Silk		For delicate, washable fabrics, e.g. made of silk, satin, synthetic fibres or blended fabrics (e.g. curtains)	SpeedPerfect, EcoPerfect, (Easy-iron), (Water Plus); No spin between rinse cycles
Wool	2 kg	Hand- or machine-washable fabrics made of wool or containing wool	Particularly gentle wash programme to avoid shrinkage of laundry, longer programme breaks (fabrics rest in the detergent solution)
SuperQuick 15'		Easy-care fabrics made of cotton, linen, synthetic fibres or blended fabrics	Short programme, approx. 15 minutes, suitable for lightly soiled laundry
Sportswear		Fabrics made from microfibre	SpeedPerfect, EcoPerfect, (Easy-iron), (Water Plus)

Additional programmes

* Reduced load for additional SpeedPerfect function.

i As a **short programme**, Mix 40 °C, with a maximum spin speed, is ideal.

Programmes without pre-wash - add detergent to compartment **II**, programmes with pre-wash - distribute the detergent between compartments **I** and **II**.

Rinse, Spin, Empty, Low Spin

9404 / 9000993356



WAE24469BY...

Robert Bosch Hausgeräte GmbH
Carl-Wery-Str. 34
81739 München / Germany



Safety instructions

- Read the instruction manual and installation instructions and all other information enclosed with the washing machine and act accordingly.
- Retain the documents for subsequent use.

Risk of electric shock

- Never pull the cable to disconnect the mains plug.
- Never insert/disconnect the mains plug with damp hands.

Danger to life

For worn-out appliances:

- Disconnect the mains plug.
- Sever the mains cable and discard along with the plug.
- Destroy the lock on the washing machine door. This will prevent children from locking themselves in and risking their lives.

Danger of suffocation

- Keep packaging, film and packaging parts out of the reach of children.

Risk of poisoning

- Keep detergents and care products out of the reach of children.

Risk of explosion

- Items of laundry pretreated with cleaning agents containing solvents, e.g. stain remover / cleaning solvent may lead to an explosion after being loaded into the washing machine.
Rinse items of laundry thoroughly by hand beforehand.

Risk of injury

- The washing machine door can become very hot.
- Be careful when draining hot detergent solution.
- Do not climb onto the washing machine.
- Do not lean on the open washing machine door.
- Do not reach into the drum if it is still rotating.
- Be careful when opening the detergent drawer while the machine is in operation.

Consumption values depending on model

Programme	Load	Electricity**	Water**	Programme duration**
Cottons 20 °C	7 kg	0,31 kWh	72 l	2 ¾ h
Cottons 40 °C	7 kg	0,85 kWh	72 l	2 ¾ h
Cottons 60 °C	7 kg	1,21 kWh	72 l	2 ¾ h
Cottons 90 °C	7 kg	2,01 kWh	77 l	3 h
Easy-Care 40 °C	3 kg	0,64 kWh	56 l	1 ¾ h
Mix 40 °C	3 kg	0,46 kWh	36 l	1 ¼ h
Delicate / Silk 30 °C	2 kg	0,24 kWh	37 l	¾ h
/ Wool 30 °C	2 kg	0,22 kWh	47 l	¾ h

Programme	Additional function	Load	Annual energy consumption	Annual water consumption
Cottons 40 / 60 °C	EcoPerfect*	3,5/7 kg	165 kWh	10686 l

* Programme setting for testing and energy labelling in accordance with EU directive 2010/30/EU with cold water (15 °C).
** The values deviate from the indicated values depending on water pressure, hardness, and inlet temperature, ambient temperature, type, amount and soiling of the laundry, detergent used, fluctuations in the power supply and selected additional functions.

Care



- Risk of electric shock. Disconnect the mains plug.
- Risk of explosion. No solvents.



Before washing for the first time

Do not load any laundry into the machine. Turn on the tap. Add the following to compartment II:

- approx. 1 litre water
- detergent (dosage according to the manufacturer's instructions for light soiling and the appropriate degree of water hardness)

Set the programme selector to **Easy-Care 60 °C** and select (**Start/Reload**). At the end of the programme, turn the programme selector to **Off**.



Machine housing, control panel

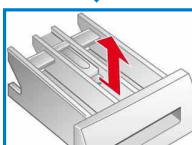
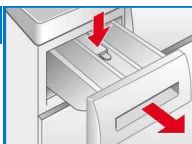
- Wipe with a soft, damp cloth.
- Do not use any abrasive cloths, scourers or cleaning agents (stainless steel cleaners).
- Remove detergent and cleaning agent residue immediately.
- Do not clean with a jet of water.



Cleaning the detergent drawer and housing...

... if it contains detergent or fabric softener residues.

1. Pull the drawer out, press down the insert and fully remove the drawer from the housing.
2. To remove the insert: press the insert upwards from below with your finger.
3. Clean the detergent dispenser tray and insert with water and a brush and dry it. Also remove any detergent or fabric softener residues in the housing.
4. Attach the insert and engage (connect the cylinder to the guide pin).
5. Push in the detergent drawer.



Leave the detergent drawer open so that any residual water can evaporate.



Washing drum and rubber seal

Wipe the inside of the rubber seal dry with a cloth. Leave the washing machine door open so that the drum can dry out. Rust stains - use chlorine-free cleaning agent, not steel wool.



Descaling

Ensure there is no laundry in the machine

Descal the appliance according to the descaler manufacturer's instructions. This should not be necessary if the correct dosage of detergent is used.



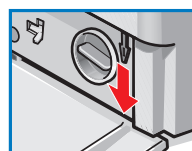
Emergency release, e.g. in the event of a power cut

The programme continues to run when the power has been restored. However, if the laundry has to be removed, the washing machine door can be opened as follows:

Risk of scalding.

The detergent solution and laundry may be hot. If possible, leave it to cool down. Do not reach into the drum if it is still rotating. Do not open the washing machine door if water can be seen through the glass.

1. Turn the programme selector to **Off** and disconnect the mains plug.
2. Drain the detergent solution → page 10.
3. Pull the emergency release downwards with a tool and release. Washing machine door can then be opened.



Information on the display panel

depending on model

F: 16	Close the washing machine door properly; laundry may be caught.
F: 17	Open the tap completely, supply hose kinked or trapped; Clean the filter → page 10, Water pressure too low.
F: 18	Detergent solution pump blocked; Clean the detergent solution pump → page 10. Drainage hose / waste pipe blocked; Clean the drainage hose at the siphon → page 10.
F: 21	Motor fault. Call customer services.
F: 23	Water in the base tub, appliance leaking. Call customer services.

Maintenance



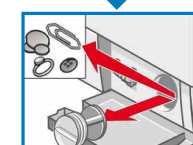
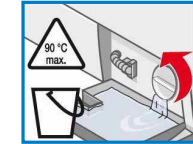
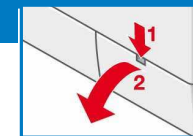
- Risk of scalding. Allow the detergent solution to cool down.
- Turn off the tap.



Detergent solution pump

Turn the programme selector to **Off** and disconnect the mains plug.

1. Open and remove the service flap.
2. **For models with a drainage hose:** Remove the drainage hose from the retainer and pull it from the housing. Remove the container. Remove the sealing cap, allow the detergent solution to flow out. Replace the sealing cap and place the drainage hose in the retainer.
- 2* **For models without a drainage hose:** Carefully unscrew the pump cover until the detergent solution begins to flow out. When the service flap is half full, close the pump cover and empty the service flap. Repeat the above steps until all the detergent solution has completely drained out.
3. Carefully unscrew the pump cover (residual water).
4. Clean the interior, pump cover thread and pump housing (the impeller in the detergent solution pump must rotate).
5. Replace the pump cover and screw it tightly.
6. Place the service flap back on and close.



To prevent unused detergent from flowing straight into the drain during the next wash: Pour 1 litre of water into compartment II and start the **Empty** programme.



Drainage hose at the siphon

Turn the programme selector to **Off** and disconnect the mains plug.

1. Loosen the hose clamp, carefully remove the drainage hose (residual water).
2. Clean the drainage hose and siphon connecting piece.
3. Reattach the drainage hose and secure the connection with the hose clamp.



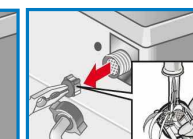
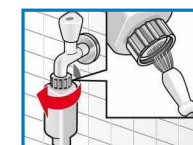
Filter in the water supply

Risk of electric shock

Do not immerse the HydroSafe safety device in water (contains an electric valve).

Reduce the water pressure in the supply hose:

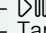





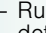
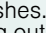
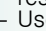
1. Turn off the tap.
2. Select any programme (apart from **Spin** / **Empty**).
3. Choose (**Start/Reload**). Let the programme run for approximately 40 seconds.
4. Turn the programme selector to **Off**. Disconnect the mains plug. Clean the filter:
1. Depending on model:
Disconnect the hose from the tap.
Clean the filter using a small brush.



and/or for Standard and Aqua-Secure models:

1. Remove the hose on the rear of the appliance, Remove the filter with pliers and clean.
2. Connect the hose and check for leaks.

What to do if ...

- Water is leaking out.
 - Attach/replace the drainage hose correctly.
 - Tighten the screw connection of the supply hose.
- No water supply.
Detergent not dispensed.
 -  (**Start/Reload**) not selected?
 - Tap not turned on?
 - Filter blocked? Clean the filter → *page 10*.
 - Supply hose kinked or trapped?
- Washing machine door cannot be opened.
 - Safety function active. Programme stopped? → *page 4*.
 -  (without final spin) selected? → *page 3, 4*.
 - Can be opened by emergency release only? → *page 9*.
- Programme does not start.
 -  (**Start/Reload**) or  (**Finished in**) time selected?
 - Washing machine door closed?
 - Childproof lock active? Deactivate → *page 5*.
- Detergent solution is not drained.
 -  (without final spin) selected? → *page 3, 4*.
 - Clean the detergent solution pump → *page 10*.
 - Clean the waste pipe and/or drainage hose.
- Water not visible in the drum.
 - Not a fault - water below the visible area.
- Unsatisfactory spin result.
Laundry wet/too damp.
 - Not a fault - the unbalanced-load detection system has cancelled the spin cycle because of uneven distribution of the laundry. Distribute small and large items of laundry evenly inside the drum.
 -  (**Easy-iron**) selected? → *page 5*.
 - Selected speed too low? → *page 5*.
- The programme duration changes during the wash cycle.
 - Not a fault – the programme sequence is optimised for the particular wash process. This may result in changes to the programme duration in the display field.
- Spin cycle performed several times.
 - Not a fault - unbalanced load detection system adjusts the imbalance.
- Residual water in the compartment for care products.
 - Not a fault - the action of the care product is not affected.
 - Clean the insert if necessary → *page 9*.
- Odour formation in the washing machine.
 - Run programme  **Cottons 90 °C** without laundry. Use standard detergent.
- Status display  flashes.
Foam may be coming out of the detergent drawer.
 - Too much detergent used? Mix 1 tablespoon of fabric softener with ½ litre of water and pour into dispenser **II** (*not for outdoor and down-filled textiles!*).
 - Reduce the detergent dosage for the next wash cycle.
- Intense noise formation, vibrations and “wandering” during the spin cycle.
 - Are the appliance feet fixed?
Secure the appliance feet → *Installation instructions*.
 - Transportation safety devices removed?
Remove the transportation safety devices → *Installation instructions*.
- Noises during spin and drain cycles.
 - Clean detergent-solution pump → *page 10*.
- Display panel/indicator lamps do not function during operation.
 - Power cut?
 - Fuses triggered? Reset/change the fuse.
 - If the fault occurs repeatedly, call customer services.
- Programme sequence longer than usual.
 - Not a fault - unbalanced load detection system adjusts imbalance by repeatedly distributing the laundry.
 - Not a fault - foam detection system active - adds an additional rinse cycle.
- Detergent residues on the laundry.
 - Occasionally, phosphate-free detergents contain water-insoluble residues.
 - Use the  **Rinse** cycle or brush out the laundry after washing.

If you cannot correct a fault yourself (switching on/off) or a repair is required:

- Turn the programme selector to **Off** and remove the mains plug from the socket.
- Turn off the water supply and call customer services → *Installation instructions*.



Register your new Bosch now:
www.bosch-home.com/welcome



Washing machine
WAE24469BY



en operating instructions