

Cotton	* - 90 °C	Hard-wearing textiles, heat-resistant textiles made of cotton or linen
Cotton	* - 60 °C	Hard-wearing textiles made of cotton or blended fabrics
PowerWash 60*	* - 60 °C	Easy-Care textiles made of cotton, linen, synthetic fibres or blended fabrics
Easy-Care	* - 60 °C	Textiles made of cotton or easy-care textiles
Mixed Fabrics	* - 40 °C	Dark textiles made of cotton and dark easy-care textiles
Easy-Care Dark	* - 40 °C	Non-iron shirts made of cotton, linen, synthetics fibres or blended fabrics
Shirts/Business	* - 60 °C	Delicate, washable textiles, e.g. made of silk, satin, synthetic fibres or blended fabrics
Delicates/Silk	* - 40 °C	Weather, sport and outdoor textiles also with climate protection membrane
Outdoor Wear	* - 40 °C	Hand or machine-washable wool or rich-wool textiles
Wool	* - 40 °C	Easy-Care textiles made of cotton, linen, synthetic fibres or blended fabrics
Rapid 15'	* - 40 °C	

Additional programmes

The programmes are time-controlled for lightly soiled textiles. If textiles are heavily soiled, reduce the load or select additional function, e.g. **Eco** or **Extra Rinse**.
When washing at maximum load using programmes marked with * always select **Eco** or **Extra Rinse** additional function. Irrespective of the type of washing, **Easy-Care 40 °C** at max. selectable spin speed is best suited as a **short programme**.
Programmes without Prewash – pour detergent into dispenser II, programmes with Prewash – divide detergent between dispensers I and II.

Rinse, Spin, Empty, Low spin

94011 9000937426

Siemens Electrogeräte GmbH
Carl-Wery-Str. 34
81739 München/Deutschland

W114S440GB

Additional functions: Information

Eco **Prewash**, **Less Ironing**, **Extra Rinse**
Time-controlled programme, short programme for normally soiled washing.

Eco **Prewash**, **Less Ironing**, **Extra Rinse**
Short spin only, hang up dripping wet

Eco **Prewash**, **Less Ironing**, **Extra Rinse**
Different types of washing can be washed together

Eco **Prewash**, **Less Ironing**, **Extra Rinse**
Reduced rinse and final spin cycle

Eco **Prewash**, **Less Ironing**, **Extra Rinse**
No spin cycle between the rinse cycles

Eco **Less Ironing**, **Extra Rinse**
Reduced final spin at intervals

Eco **Less Ironing**, **Extra Rinse**
Especially gentle wash programme to prevent shrinkage, longer programme pauses (textiles rest in wash liquid)

Eco **Less Ironing**, **Extra Rinse**
Short programme approx. 15 minutes, suitable for lightly soiled washing

Safety instructions

- Read and follow the operating and installation instructions and all other information enclosed with the washing machine.
 - Retain documents for subsequent use.
- Risk of electric shock**
- Never pull out the mains plug by tugging the power cord!
 - Insert/pull out the mains plug with dry hands only.
- Danger to life**
- On redundant appliances:
- Pull out the mains plug!
 - Sever the power cord and discard together with the plug.
 - Destroy the lock on the washing-machine door. This will prevent children from locking themselves in and suffocating.
- Risk of suffocation**
- Keep packaging, plastic film and packaging parts out of the reach of children.
- Risk of poisoning**
- Caused by detergents containing solvents, e.g. stain remover/items of washing pretreated with solvent naphtha may result in an explosion after being loaded into the washing machine.
- Risk of explosion**
- Washing machine door may become very hot.
 - Caution when draining hot detergent solution.
 - Do not climb on the washing machine.
 - Do not lean on the open washing machine door.
 - Do not reach into the drum in case it is still rotating.
- Risk of injury**

Consumption values

Programme	Additional function	Load	Current***	Water***	Programme duration***
Cotton 20 °C	–	7 kg	0,21 kWh	77 l	1¼ h
Cotton 40 °C*	Eco <input type="checkbox"/>	7 kg	0,78 kWh	77 l	2¼ h
Cotton 60 °C	–	7 kg	1,30 kWh	77 l	1¾ h
Cotton 90 °C	–	7 kg	2,26 kWh	90 l	2 h
Easy-Care 40 °C*	Eco <input type="checkbox"/>	3,5 kg	0,58 kWh	57 l	1¼ h
Delicates/Silk 30 °C	–	2 kg	0,17 kWh	30 l	¾ h
Wool 30 °C	–	2 kg	0,20 kWh	40 l	¾ h

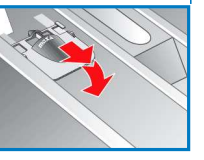
* Programme setting for test according to currently valid European standard 60456.
Information about comparability tests: To test the test programmes, wash indicated load, with **Eco** additional function and at maximum selectable spin speed.

Programme	Additional function	Load	Annual energy consumption	Annual water consumption
Cotton <input type="checkbox"/> 40,60°C	Eco <input type="checkbox"/> **	7/3.5 kg	218 kWh	10560 l

** Programme setting for testing and energy labelling according to directive 2010/30/EU with cold water (15 °C).
*** The values may deviate from the stated values depending on water pressure and hardness, room temperature, type and amount of laundry, detergents used, fluctuations in the mains voltage and selected additional functions.

Insert for liquid detergent

- Position insert for dosing liquid detergent:
- Completely remove detergent drawer. → Page 10
 - Push insert forwards.
- Do not use insert (push upwards):
- For gel-like detergents and washing powders.
 - For programmes with **Prewash** or **Finish in** option.

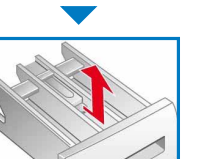
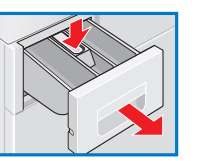


Care

- Machine housing, control panel**
- Remove detergent residue immediately.
 - Wipe with a soft, damp cloth.
 - Do not clean the appliance with a water jet.

Clean the detergent drawer ...

- ... if it contains detergent or fabric softener residue.
- Pull out, depress insert, take out drawer all the way.
 - Take out insert: using your finger, press insert upwards.
 - Clean detergent dispenser and insert with water and a brush and dry.
 - Attach insert and lock into position (push cylinder onto guide pin).
 - Slide in the detergent dispenser.



Leave detergent drawer open so that residual water can evaporate.

Drum

Leave washing machine door open so that the drum can dry out.
Use chlorine-free cleaning agent, not steel wool.

Descaling

No washing in the machine!

Not required if detergent dosed correctly. However, if this does occur, follow the instructions of the descaling agent manufacturer. Suitable descalers can be purchased on our website or from customer service.

Information on the display panel

F: 16	Close the washing machine door properly; washing may be caught.
F: 17, 29	Turn on tap fully, supply hose kinked/jammed; clean filter → Page 10, water pressure too low.
F: 18	Drain pump blocked; clean drain pump. → Page 10 Drainage hose/outlet pipe blocked; clean drainage hose on the siphon. → Page 10
F: 23	Water in the base pan, appliance leaking. Call customer service!
F: 42, 43, 44	Motor fault. Call customer service. → Installation instructions

Other displays: Switch off appliance, wait 5 seconds and switch on again. If the display is indicated again, call customer service. → Installation instructions

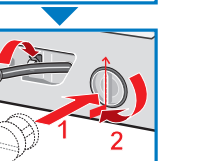
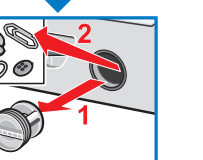
7

Maintenance

Detergent-solution pump

Set programme selector to **Off**, pull out the mains plug.

- Take the drainage hose out of the holder. Remove sealing cap, allow detergent solution to flow out. Put the closing cap back on the hose.
- Carefully unscrew the pump cover (residual water).
- Clean the interior, pump cover thread and pump housing (fan impeller in the detergent-solution pump must rotate).
- Reinsert and screw on pump cover. Handle is upright. Insert the drain hose into the holder.



To prevent unused detergent from flowing into the outlet during the next wash: Pour 1 litre of water into dispenser II and start the **Empty** programme.

Drainage hose on the siphon

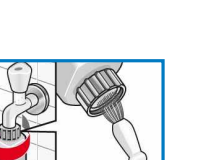
- Set programme selector to **Off**, pull out the mains plug.
- Loosen hose clip, carefully remove drainage hose (residual water).
 - Clean drainage hose and siphon spigot.
 - Re-attach drainage hose and secure connection point with hose clip.



Filter in the water inlet hose

Risk of electric shock!
Do not immerse Aqua-Stop safety device in water (contains electric valve).

- Release water pressure in the supply hose:
- Turn off the tap!
 - Select any programme (except **Spin/Empty**).
 - Select **Start/Pause**. Leave programme for approx. 40 seconds.
 - Turn the programme selector to **Off**. Pull out the mains plug.



Clean the filter:

- Disconnect the hose from the water tap. Clean filter with small brush.

and/or for standard and Aqua-Secure models:
Remove hose from the rear of the appliance. Take out filter with pliers and clean.

- Connect the hose and check for leaks.

9

What to do if ...

- Water is running out.
 - Correctly attach/replace drainage hose.
 - Tighten screw-fitting on the supply hose.
- Water not flowing in. Detergent not washed in.
 - Start/Pause** not selected?
 - Tap not open?
 - Filter blocked? Clean the filter. → Page 10
 - Supply hose kinked or jammed?
- Washing-machine door cannot be opened.
 - Safety function active. Stop programme? → Page 4
 - (Rinse stop = without final spin) selected? → Page 3, 4
 - Can be opened via emergency release only? → Page 6
- Programme does not start.
 - Start/Pause** or **Finish in** time selected?
 - Door closed?
- Detergent solution is not drained.
 - (Rinse stop = without final spin) selected? → Page 3, 4
 - Clean the drain pump. → Page 10
 - Clean outlet pipe and/or drainage hose.
- Water not visible in the drum.
 - Not a fault – water below the visible area.
- Spin result not satisfactory. Washing wet/too damp.
 - Not a fault – unbalanced load detection system has stopped the spin cycle, washing unevenly distributed. Distribute small and large items of washing in the drum.
 - Less Ironing** selected? → Page 5
 - Too low speed selected? → Page 5
- The programme duration changes during the wash cycle.
 - Not a fault – the programme sequence is optimised for the particular wash process. This may result in changes to the programme duration in the display field.
- Spin cycle actuated several times.
 - Not a fault – unbalanced load detection system adjusts imbalance.
- Residual water in the dispenser for care product ☞.
 - Not a fault – effect of the care product not impaired.
 - If required, clean insert. → Page 9
- Odour formation in the washing machine.
 - Run **Cotton 90 °C** programme without washing. Use standard detergent.
- Foam is coming out of the detergent drawer.
 - Too much detergent used?
 - Mix 1 tablespoon of fabric softener with ½ litre of water and pour into dispenser II (not for outdoor, sports and down-filled textiles!).
 - Reduce detergent dosage for the next wash cycle.
- Loud noise formation, vibrations and “Wandering” during spin cycle.
 - Appliance feet fixed? Secure appliance feet. → Installation instructions
 - Transportation protection devices removed? Remove transportation protection devices. → Installation instructions
- Noises during spin and drain cycles.
 - Clean the drain pump. → Page 10
- Display panel/indicator lights do not function while the appliance is running.
 - Power failure?
 - Fuse tripped? Switch on/replace fuse.
 - If the fault occurs repeatedly, call customer service.
- The programme takes longer than usual.
 - Not a fault – unbalanced load detection system adjusts imbalance by repeatedly distributing the washing.
 - Not a fault – foam detection system active – a rinse cycle is switched on.
- Detergent residue on the washing.
 - Occasionally phosphate-free detergents contain water-insoluble residue.
 - Select **Rinse** or brush the laundry after washing.
- In the pause status **Start/Pause** flashes very quickly and a signal sounds.
 - Water level too high. Washing cannot be reload.
 - Immediately close washing machine door.
 - Select **Start/Pause** to continue the programme.

If a fault cannot be rectified (switching the machine on and off) or a repair is required:
– Set programme selector to **Off** and pull out the mains plug.
– Turn off the tap and call customer service. → Installation instructions

Washing machine

W114S440GB

siemens-home.com/welcome

en Washing machine operating instructions

Observe the safety instructions on page 8.

Register your product online

Read these instructions and the separate installation instructions before operating the washing machine.

Your washing machine

Congratulations – You have opted for a modern, high-quality domestic appliance manufactured by Siemens. The washing machine is distinguished by its economical consumption of water and energy. Each appliance which leaves our factory is inspected thoroughly to ensure that it functions properly and is in perfect condition.

Further information on our products, accessories, spare parts and services can be found at: www.siemens-home.com or contact our customer service centres.

Contents

	Page
Intended use	1
Programmes	1
Selecting and adjusting a programme	3
Washing	3/4
After washing	4
Individual settings	5
Important information	6
Emergency lock release	6
Overview of programmes	7
Safety instructions	8
Consumption values	8
Insert for liquid detergent	9
Care	9
Information on the display panel	9
Information on blockage	10
What to do if	11



Protection of the environment/Conservation tips

- Utilise the maximum amount of washing for the particular programme.
- Wash normally soiled washing without prewash.
- The selectable temperatures apply to the care labels on the textiles. The temperatures in the machine may deviate from this so that you get the optimum mix of energy-saving and washing results.
- Measure detergent according to the manufacturer's instructions and water hardness.
- If the washing is then dried in the tumble dryer, select spin speed according to the instructions of the dryer manufacturer.

Intended use

- for use in the household only,
- for washing machine-washable textiles and hand-washable wool in wash liquor,
- to be operated with cold drinking water and commercially available detergents and care products which are suitable for use in washing machines.



- Do not leave children unattended near the washing machine!
- Children and uninstructed persons must not use the washing machine!
- Keep pets away from the washing machine!
- Switch on washing machine only with base strip attached

Programmes

For detailed see Overview of programmes. → Page 7
Temperature and spin speed can be selected individually irrespective of the selected programme and programme progress.

Cotton	hard-wearing textiles
Cotton ◀	hard-wearing textiles
Easy-Care	easy-care textiles
Mixed Fabrics	different types of washing
Delicates/Silk	delicate, washable textiles
Wool 🐑	hand-/machine-washable wool
Rinse	with subsequent spin cycle
Spin	extra spin with variable spin speed
Empty	the rinsing water when ☒ (Rinse stop = without final spin) is activated
Low spin	washing washed by hand; gentler spin cycle
Rapid 15'	extra short programme
PowerWash 60'	hard-wearing textiles
Outdoor Wear	weather, sport and outdoor textiles → Page 6
Shirts/Business	non-iron shirts
Easy-Care Dark	dark textiles

Preparation



Correct installation according to separate installation instructions.



Checking the machine

- Never switch on a damaged machine!
- Inform your customer service!

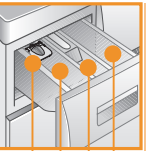


Insert mains plug

- With dry hands only!
- Take hold of the plug only!



Turn on the tap



Insert for liquid detergent (depending on model) → Page 9

Dispenser II: detergent for main wash, water softener, bleach, stain remover

Dispenser ☼: fabric softener, starch

Dispenser I: detergent for prewash

The control panel features several sections:

- Start/Pause:** A large circular button.
- Additional functions:** Five buttons labeled Start/Pause, Eco+, Pre-wash, Less Ironing, and Extra Rinse.
- Display panel/Option buttons:** A digital display showing temperature (90°C, 60°C, 40°C, 30°C, 20°C), spin speed (1400, 1200, 800, 600, 400), and finish in time. Below the display are three buttons for Temp., rpm, and Finish in.
- Programme buttons:** A row of buttons for Easy-Care Dark, Shirts/Business, Outdoor Wear, PowerWash 60', Rapid 15', Low spin, and Empty.

Information icon (i): If the Option buttons are touched for longer, the selected options will run automatically!

☼ – 90 °C	Temp.	Select the temp
☒ – 1400 *	rpm	Select the spin s (Rinse stop = wi the water after t
1 – 24 h	Finish in	Programme enc
Status displays		Programme pro
☒ ☼ ☼ - 0 -		Washing, Rinse, end (- 0 -)

Before using your washing machine for the first time
wash once without any washing. → Page 6

Sorting and inserting the washing

Follow manufacturer's care information!
According to the information on the care labels.
According to type; colour; soiling and temperature.
Do not exceed maximum load. → Page 7

Follow important instructions. → Page 6

Insert large and small items of washing!

Close the washing machine door. Do not jam items of washing between the washing machine door and rubber seal.

Add detergent and care product

Dose according to:
amount of washing, soiling, water hardness (available from your water utility company)
and manufacturer's instructions.

For models without insert for liquid detergent:

Pour liquid detergent into corresponding dispenser and place in drum.
Caution when opening the detergent drawer while the appliance is running!

i Dilute viscous fabric softener and fabric conditioner with water.
Prevents blockage of the overflow.

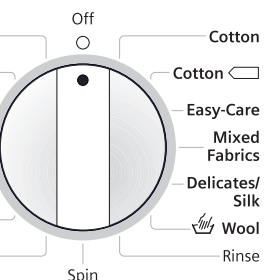
Setting the programme

i Additional functions and option buttons
→ Individual settings, Page 5

i Programme selector for switching
the machine on and off and for
selecting the programme.
Can be rotated in either direction.

Select Start/Pause

Programme selector



Temperature (☼ = cold).

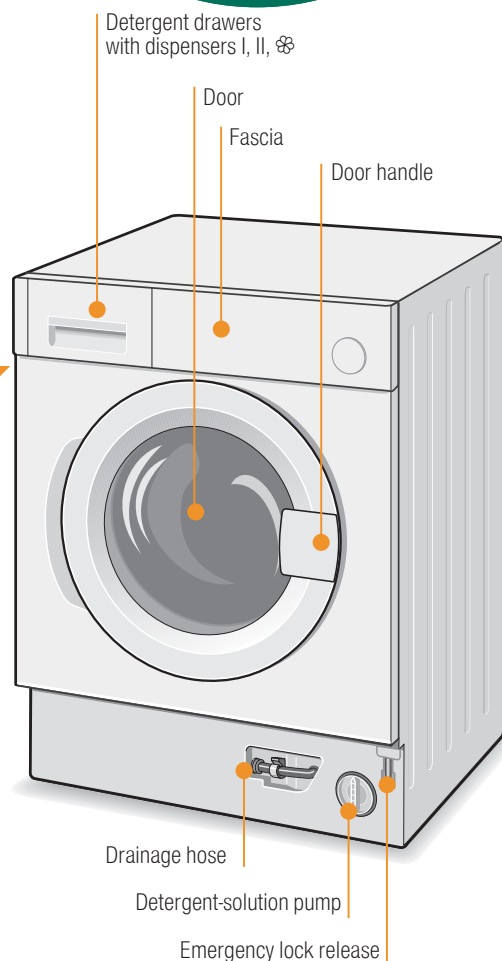
Speed (* depending on model) or ☐ (without final spin, the washing remains in the last rinse cycle).

Is in ...

Progress displays:

Spin, programme duration or

Washing



Washing

Switching off

Turn the programme selector to **Off**.

Turn off tap

Not required for Aqua-Stop models.
→ Information, Installation instructions

Remove the washing

Open washing machine door and remove washing.

If ☐ (Rinse stop = without final spin) active:

Set programme selector to **Empty** or **Spin**.

Select **Start/Pause**.

- i**
- Remove any foreign objects – risk of rusting.
 - Leave detergent drawer and door open so that residual water can evaporate.

End of programme when ...

... - ☐ - is indicated on the display panel.

Terminating the programme

For programmes at high temperature:

– Cool washing: select **Rinse**.

– Select **Start/Pause**.

For programmes at low temperature:

– Select **Spin** or **Empty**.

– Select **Start/Pause**.

Change programme if ...

... you have mistakenly selected a wrong programme:

– Reselect programme.

– Select **Start/Pause**.

The new programme starts from the beginning.

Cancel Programme

– Select **Start/Pause**.

– If required, top up washing (do not leave door open for a long time – water from the washing could run out of the open door).

– Select **Start/Pause**.

Individual settings

Option buttons

You can change the spin speed and temperature beforehand and while the selected programme is running. Effects dependent on the programme progress.

Temp. (Temperature °C)

You can change the indicated washing temperature. The maximum washing temperature which can be selected depends on the set programme.

rpm (Spin speed, revolutions per minute) / (Rinse stop = without final spin)

You can change the indicated spin speed or select  (Rinse stop = without final spin cycle, washing remains in the water after the last rinse cycle).

The selectable maximum spin speed depends on the model and the selected programme.


Finish in

The respective programme duration is displayed by selecting the programme. The programme start can be delayed before the programme begins. The "Finish in" time can be set in hour steps up to maximum 24h.

Keep pressing the **Finish in** button until the required number of hours is indicated (h=hour). Select **Start/Pause**.

Settings cannot be made when the programme has started.

Additional functions → Overview of programmes, Page 7

Eco+  Energy-optimised washing by reducing the temperature while achieving a consistent washing result. The washing temperature is lower than the selected temperature. For special hygiene requirements, it is recommended that a higher temperature be selected.

Prewash For heavily soiled washing. Prewash at 30 °C.

Less Ironing Special spin sequence with subsequent fluffing. Gentle final spin at reduced spin speed. Residual moisture of the washing slightly increased.

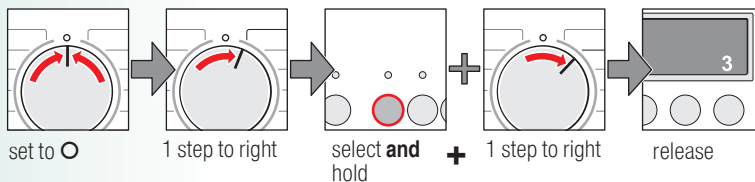
Extra Rinse Additional rinse cycle. Longer programme duration. For areas with very soft water or for further improvement of the rinsing result.

Start/Pause

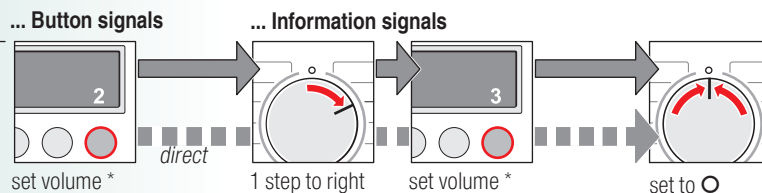
For starting or interrupting the programme.

Signal

1. Activate setting mode for signal volume



2. Set volume for ...



* If required, select repeatedly



Important information



Before using your washing machine for the first time

Do not put any washing in the washing machine! Turn the tap on. Pour into dispenser II:

- approx. **1 litre** water.
- Detergent (dosage according to manufacturer's instructions for light soiling and according to degree of water hardness).

Set programme selector to **Easy-Care 60 °C** and select **Start/Pause**.

At the end of the programme set the programme selector to **Off**.



Protecting the washing and the machine

- When dosing all detergents, cleaning aids and cleaning agents, always follow the manufacturer's instructions.
- Empty pockets.
- Remove metal parts (paper clips, etc.).
- Wash delicates in the net/bag (tights, curtains, underwired bras).
- Close zips, button up covers.
- Brush sand out of pockets and collars.
- Remove curtain fittings or include in the net/bag.



Insert laundry

Insert large and small items of washing!

Do not jam items of washing between the washing machine door and rubber seal.



Washing with different degrees of soiling

Wash new items separately.

Light



Do not Prewash.

If required, pretreat stains. Select **Eco+**  additional function.

Heavy



Load less washing. Select programme with Prewash.

If required, pretreat stains. Select **Eco+**  additional function.



Soaking

Load washing of the same colour.

Pour soaking agent/detergent into dispenser II according to the manufacturer's instructions. Set programme selector to **Cotton 30 °C** and select **Start/Pause**. After approx. 10 minutes select **Start/Pause** to stop the programme. After the required soaking time reselect **Start/Pause** if the programme is to be continued or change the programme.



Starching

Washing should not be treated with fabric softener.

Liquid starch can be used in all wash programmes. Pour starch into the fabric softener dispenser  according to manufacturer's specifications (if required clean beforehand).



Dyeing/Bleaching

Dye in household quantities only. Salt may attack stainless steel! Observe specifications of the dye manufacturer! **Do not bleach washing in the washing machine!**



Outdoor Wear

The laundry must not be treated with fabric softener.

Special detergents suitable for machine wash available in particular from sports shops. Dosage according to manufacturer's instructions. Dose special detergent for outdoor textiles in dispenser II. Set programme selector to **Outdoor Wear**. Select temperature and **Start/Pause**.



Emergency release e.g. if power failure occurs.

The programme continues running when the power supply is restored. If the washing is still to be removed, the door can be opened as described below:



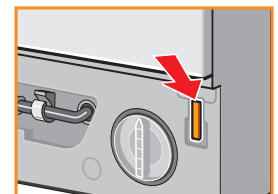
Risk of scalding!

Detergent solution and washing may be hot. If required, leave to cool down.

Do not reach into the drum in case it is still rotating.

Do not open the door if you can still see water through the glass.

1. Set programme selector to **Off**, pull out the mains plug.
2. Removing base strip → see separate installation instructions.
3. Drain the water. → Page 10
4. Pull down emergency release with a tool and release. Door can then be opened.
5. Attaching base strip → see separate installation instructions.



Overview of programmes → Observe table of consumption values on Page 8 and instructions on Page 6!



Additional functions; information

Programmes °C max. Type of washing

Cotton	* - 90 °C	Hard-wearing textiles, heat-resistant textiles made of cotton or linen	Eco+ , Prewash , Less Ironing , Extra Rinse
Cotton 	* - 60 °C		
PowerWash 60'	* - 60 °C	Hardwearing textiles made of cotton or blended fabrics	Time-controlled programme, short programme for normally soiled washing.
Easy-Care	* - 60 °C	Easy-Care textiles made of cotton, linen, synthetic fibres or blended fabrics	Eco+ , Prewash , Less Ironing , Extra Rinse
Mixed Fabrics	* - 40 °C	Textiles made of cotton or easy-care textiles	Eco+ , Prewash , Less Ironing , Extra Rinse Different types of washing can be washed together
Easy-Care Dark	* - 40 °C	Dark textiles made of cotton and dark easy-care textiles	Eco+ , Prewash , Less Ironing , Extra Rinse Reduced rinse and final spin cycle
Shirts/Business	* - 60 °C	Non-iron shirts made of cotton, linen, synthetics fibres or blended fabrics	Eco+ , Prewash , Extra Rinse Short spin only, hang up dripping wet
Delicates/Silk	* - 40 °C	Delicate, washable textiles, e.g. made of silk, satin, synthetic fibres or blended fabrics	Eco+ , Prewash , Less Ironing , Extra Rinse No spin cycle between the rinse cycles
Outdoor Wear	* - 40 °C	Weather, sport and outdoor textiles also with climate protection membrane	Eco+ , Less Ironing , Extra Rinse Reduced final spin at intervals
Wool 	* - 40 °C	Hand or machine-washable wool or rich-wool textiles	Especially gentle wash programme to prevent shrinkage, longer programme pauses (textiles rest in wash liquor)
Rapid 15'	* - 40 °C	Easy-Care textiles made of cotton, linen, synthetic fibres or blended fabrics	Short programme approx. 15 minutes, suitable for lightly soiled washing
Additional programmes			Rinse , Spin , Empty , Low spin

i The programmes are time-controlled for lightly soiled textiles. If textiles are heavily soiled, reduce the load or select additional function, e.g. **Eco+** .
When washing at maximum load using programmes marked with *, always select **Eco+** additional function.

Irrespective of the type of washing, **Easy-Care 40 °C** at max. selectable spin speed is best suited as a **short programme**.
Programmes without Prewash – pour detergent into dispenser **II**, programmes with Prewash – divide detergent between dispensers **I** and **II**.

9401/ 9000937426



WI14S440GB

Siemens Electrogeräte GmbH
Carl-Wery-Str. 34
81739 München/Deutschland



Safety instructions

- Read and follow the operating and installation instructions and all other information enclosed with the washing machine.
- Retain documents for subsequent use.

Risk of electric shock

- Never pull out the mains plug by tugging the power cord!
- Insert/pull out the mains plug with dry hands only.

Danger to life

On redundant appliances:

- Pull out the mains plug!
- Sever the power cord and discard together with the plug.
- Destroy the lock on the washing-machine door. This will prevent children from locking themselves in and suffocating.

Risk of suffocation

- Keep packaging, plastic film and packaging parts out of the reach of children.

Risk of poisoning

- Keep detergents and care products out of the reach of children.

Risk of explosion

- Caused by detergents containing solvents, e.g. stain remover/items of washing pretreated with solvent naphtha may result in an explosion after being loaded into the washing machine.
Before hand thoroughly rinse items of washing by hand.

Risk of injury

- Washing machine door may become very hot.
- Caution when draining hot detergent solution.
- Do not climb on the washing machine.
- Do not lean on the open washing machine door.
- Do not reach into the drum in case it is still rotating.

Consumption values

Programme	Additional function	Load	Current***	Water***	Programme duration**
Cotton 20 °C	–	7 kg	0,21 kWh	77 l	1¼ h
Cotton 40 °C*	Eco+ 	7 kg	0,78 kWh	77 l	2¼ h
Cotton 60 °C	–	7 kg	1,30 kWh	77 l	1¾ h
Cotton 90 °C	–	7 kg	2,26 kWh	90 l	2 h
Easy-Care 40 °C*	Eco+ 	3,5 kg	0,58 kWh	57 l	1¼ h
Delicates/Silk 30 °C	–	2 kg	0,17 kWh	30 l	¾ h
Wool 30 °C	–	2 kg	0,20 kWh	40 l	¾ h

* Programme setting for test according to currently valid European standard 60456.

Information about comparability tests: To test the test programmes, wash indicated load, with **Eco+** additional function and at maximum selectable spin speed.

Programme	Additional function	Load	Annual energy consumption	Annual water consumption
Cotton 40,60 °C	Eco+ **	7/3.5 kg	218 kWh	10560 l

** Programme setting for testing and energy labelling according to directive 2010/30/EU with cold water (15 °C).

*** The values may deviate from the stated values depending on water pressure and hardness, room temperature, type and amount of laundry, detergents used, fluctuations in the mains voltage and selected additional functions.



Insert for liquid detergent depending on model

- Position insert for dosing liquid detergent:
- Completely remove detergent drawer. → *Page 10*
 - Push insert forwards.
- Do not use insert (push upwards):
- For gel-like detergents and washing powders.
 - For programmes with **Prewash** or **Finish in** option.



Care



- **Risk of electric shock!** Pull out the mains plug!
- **Risk of explosion!** No solvents!

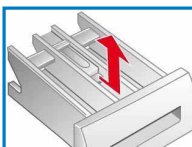
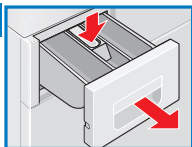
Machine housing, control panel

- Remove detergent residue immediately.
- Wipe with a soft, damp cloth.
- Do not clean the appliance with a water jet.

Clean the detergent drawer ...

... if it contains detergent or fabric softener residue.

1. Pull out, depress insert, take out drawer all the way.
2. Take out insert: using your finger, press insert upwards.
3. Clean detergent dispenser and insert with water and a brush and dry.
4. Attach insert and lock into position (push cylinder onto guide pin).
5. Slide in the detergent dispenser.



Leave detergent drawer open so that residual water can evaporate.

Drum

Leave washing machine door open so that the drum can dry out. Use chlorine-free cleaning agent, not steel wool.

Descaling No washing in the machine!

Not required if detergent dosed correctly. However, if this does occur, follow the instructions of the descaling agent manufacturer. Suitable descalers can be purchased on our website or from customer service.

Information on the display panel depending on model

F: 16	Close the washing machine door properly; washing may be caught.
F: 17, 29	Turn on tap fully, supply hose kinked/jammed; clean filter → <i>Page 10</i> , water pressure too low.
F: 18	Drain pump blocked; clean drain pump. → <i>Page 10</i> Drainage hose/outlet pipe blocked; clean drainage hose on the siphon. → <i>Page 10</i>
F: 23	Water in the base pan, appliance leaking. Call customer service!
F: 42, 43, 44	Motor fault. Call customer service. → <i>Installation instructions</i>
Other displays	Switch off appliance, wait 5 seconds and switch on again. If the display is indicated again, call customer service. → <i>Installation instructions</i>

Maintenance



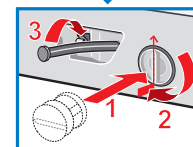
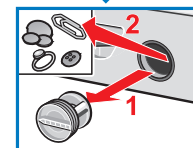
- Risk of scalding!**
- Allow detergent solution to cool down!
 - Turn off the tap!



Detergent-solution pump

Set programme selector to **Off**, pull out the mains plug.

1. Take the drainage hose out of the holder. Remove sealing cap, allow detergent solution to flow out. Put the closing cap back on the hose.
2. Carefully unscrew the pump cover (residual water).
3. Clean the interior, pump cover thread and pump housing (fan impeller in the detergent-solution pump must rotate).
4. Reinsert and screw on pump cover. Handle is upright. Insert the drain hose into the holder.



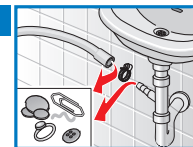
To prevent unused detergent from flowing into the outlet during the next wash: Pour 1 litre of water into dispenser II and start the **Empty** programme.



Drainage hose on the siphon

Set programme selector to **Off**, pull out the mains plug.

1. Loosen hose clip, carefully remove drainage hose (residual water).
2. Clean drainage hose and siphon spigot.
3. Re-attach drainage hose and secure connection point with hose clip.



Filter in the water inlet hose

Risk of electric shock!
Do not immerse Aqua-Stop safety device in water (contains electric valve).

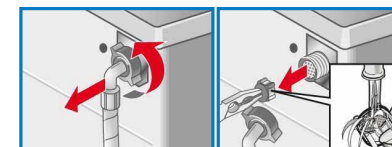
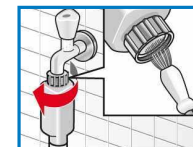
- Release water pressure in the supply hose:
1. Turn off the tap!
 2. Select any programme (except **Spin/Empty**).
 3. Select **Start/Pause**. Leave programme for approx. 40 seconds.
 4. Turn the programme selector to **Off**. Pull out the mains plug.

Clean the filter:

5. Disconnect the hose from the water tap. Clean filter with small brush.

and/or for standard and Aqua-Secure models:
Remove hose from the rear of the appliance. Take out filter with pliers and clean.

6. Connect the hose and check for leaks.



What to do if ...

Water is running out.	<ul style="list-style-type: none"> - Correctly attach/replace drainage hose. - Tighten screw-fitting on the supply hose.
Water not flowing in. Detergent not washed in.	<ul style="list-style-type: none"> - Start/Pause not selected? - Tap not open? - Filter blocked? Clean the filter. → <i>Page 10</i> - Supply hose kinked or jammed?
Washing-machine door cannot be opened.	<ul style="list-style-type: none"> - Safety function active. Stop programme? → <i>Page 4</i> - ☐ (Rinse stop = without final spin) selected? → <i>Page 3, 4</i> - Can be opened via emergency release only? → <i>Page 6</i>
Programme does not start.	<ul style="list-style-type: none"> - Start/Pause or Finish in time selected? - Door closed?
Detergent solution is not drained.	<ul style="list-style-type: none"> - ☐ (Rinse stop = without final spin) selected? → <i>Page 3, 4</i> - Clean the drain pump. → <i>Page 10</i> - Clean outlet pipe and/or drainage hose.
Water not visible in the drum.	<ul style="list-style-type: none"> - Not a fault – water below the visible area.
Spin result not satisfactory. Washing wet/too damp.	<ul style="list-style-type: none"> - Not a fault – unbalanced load detection system has stopped the spin cycle, washing unevenly distributed. Distribute small and large items of washing in the drum. - Less Ironing selected? → <i>Page 5</i> - Too low speed selected? → <i>Page 5</i>
The programme duration changes during the wash cycle.	<ul style="list-style-type: none"> - Not a fault – the programme sequence is optimised for the particular wash process. This may result in changes to the programme duration in the display field.
Spin cycle actuated several times.	<ul style="list-style-type: none"> - Not a fault – unbalanced load detection system adjusts imbalance.
Residual water in the dispenser for care product ☼.	<ul style="list-style-type: none"> - Not a fault – effect of the care product not impaired. - If required, clean insert. → <i>Page 9</i>
Odour formation in the washing machine.	<ul style="list-style-type: none"> - Run Cotton 90 °C programme without washing. Use standard detergent.
Foam is coming out of the detergent drawer.	<ul style="list-style-type: none"> - Too much detergent used? - Mix 1 tablespoon of fabric softener with ½ litre of water and pour into dispenser II (not for outdoor, sports and down-filled textiles!). - Reduce detergent dosage for the next wash cycle.
Loud noise formation, vibrations and "Wandering" during spin cycle.	<ul style="list-style-type: none"> - Appliance feet fixed? Secure appliance feet. → <i>Installation instructions</i> - Transportation protection devices removed? Remove transportation protection devices. → <i>Installation instructions</i>
Noises during spin and drain cycles.	<ul style="list-style-type: none"> - Clean the drain pump. → <i>Page 10</i>
Display panel/indicator lights do not function while the appliance is running.	<ul style="list-style-type: none"> - Power failure? - Fuse tripped? Switch on/replace fuse. - If the fault occurs repeatedly, call customer service.
The programme takes longer than usual.	<ul style="list-style-type: none"> - Not a fault – unbalanced load detection system adjusts imbalance by repeatedly distributing the washing. - Not a fault – foam detection system active – a rinse cycle is switched on.
Detergent residue on the washing.	<ul style="list-style-type: none"> - Occasionally phosphate-free detergents contain water-insoluble residue. - Select Rinse or brush the laundry after washing.
In the pause status Start / Pause flashes very quickly and a signal sounds.	<ul style="list-style-type: none"> - Water level too high. Washing cannot be reloaded. Immediately close washing machine door. - Select Start/Pause to continue the programme.

If a fault cannot be rectified (switching the machine on and off) or a repair is required:

- Set programme selector to **Off** and pull out the mains plug.
- Turn off the tap and call customer service. → *Installation instructions*

SIEMENS



Washing machine

WI14S440GB

siemens-home.com/welcome

en Washing machine operating instructions



Observe the safety instructions on page 8.



Read these instructions and the separate installation instructions before operating the washing machine.

Register your product online