

1

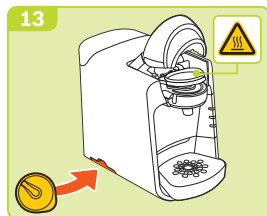
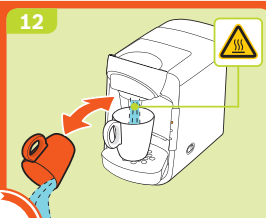
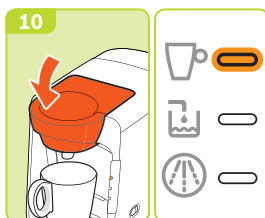
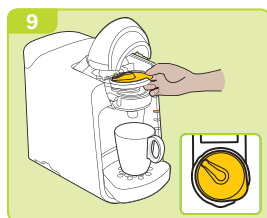
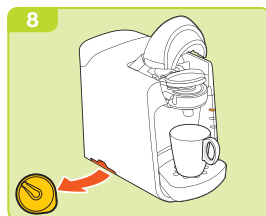
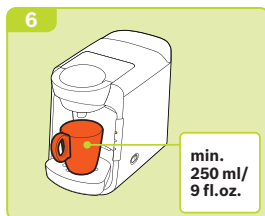
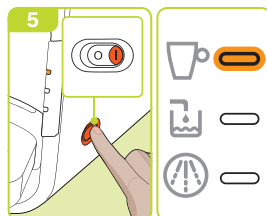
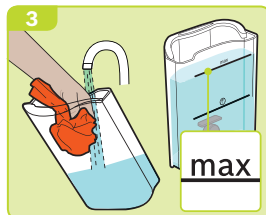
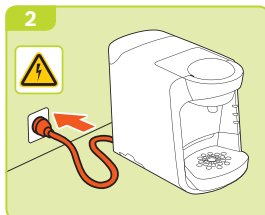
1. Get your TASSIMO ready

de Inbetriebnahme
en First time use
fr La première utilisation
es Puesta en servicio
pt Primeira utilização

it Messa in funzione
sv Idrifttagning
da Ibrugtagning
no Første gangs bruk
nl Ingebruikneming

el Θέση σε λειτουργία
pl Uruchamianie
ru Ввод в эксплуатацию
uk Перше використання

cs Uvedení do provozu
sk Uvedenie do prevádzky
ro Prima utilizare
ko 처음 사용할 때



3x

 TASSIMO

9000 908 382 06/13

2

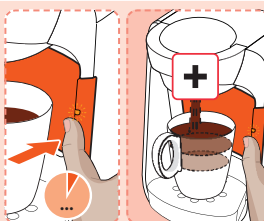
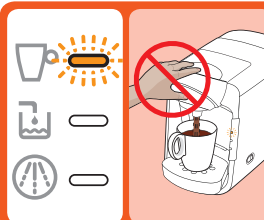
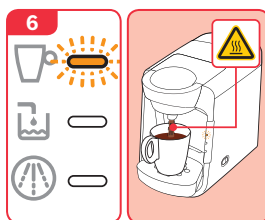
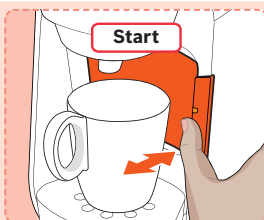
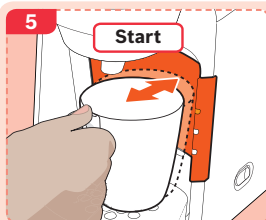
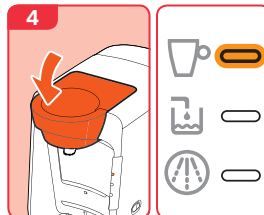
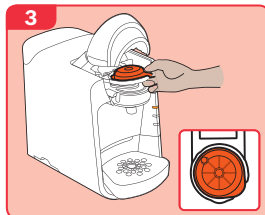
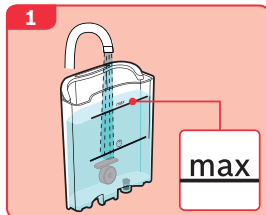
de Getränkezubereitung
 en Beverage preparation
 fr Préparation de boissons
 es Preparación de bebidas
 pt Preparação de bebidas

it Preparazione delle
 bevande
 sv Tillredning av drycker
 da Tilberedelse af drikke
 no Tilberedning av drikker

nl Toebereiden van dranken
 el Παρασκευή ροφήματος
 pl Przygotowanie napoju
 ru Приготовление
 напитков

uk Приготування напою
 cs Příprava nápoje
 sk Príprava nápoju
 ro Prepararea băuturilor
 ko 음료 준비

2. Enjoy your first TASSIMO Drink



9000 908 382 06/13