

# Your washing machine

**Congratulations** - You have opted for a modern, high-quality domestic appliance manufactured by Bosch. This washing machine is distinguished by its economical water and energy consumption. Each machine that leaves our factory has been inspected thoroughly to ensure that it functions properly and is in perfect condition.

For further information and a selection of our products go to our web site: [www.bosch-home.com](http://www.bosch-home.com)

You can find the contact details for your nearest after-sales service here or in the after-sales service directory (depending on model).  
**GB** 0844 8928979  
 Calls from a BT landline will be charged at up to 3 pence per minute. A call set-up fee of up to 6 pence may apply.  
**IE** 01450 2655

## Environmentally friendly waste disposal

All packaging must be disposed of in accordance with environmental guidelines. This appliance is certified in accordance with European Directive 2002/96/EC on waste electrical and electronic equipment (WEEE). This directive provides the framework for the EU-wide collection and reuse of used appliances.

## Contents

|                                     | Page |
|-------------------------------------|------|
| Intended use                        | 1    |
| Programmes                          | 1    |
| Setting and adjusting the programme | 3    |
| Washing                             | 3/4  |
| After washing                       | 4    |
| Individual settings                 | 5    |
| Important information               | 6    |
| Overview of programmes              | 7    |
| Safety instructions                 | 8    |
| Consumption values                  | 8    |
| Care                                | 9    |
| Information to indicator lights     | 9    |
| Maintenance                         | 10   |
| What to do if...                    | 11   |

## Environmental protection/Conservation tips

- Always fill the washing machine with a maximum amount of laundry for the relevant programme.
- Wash normally soiled washing without a pre-wash (*model-dependent*).
- Instead of **Cottons 90 °C**, choose the programme **Cottons Eco 60 °C**. Comparable cleaning result with significantly lower energy consumption.
- Measure the detergent according to the manufacturer's instructions and water hardness.
- If the laundry is then dried in the tumble dryer, select the spin speed according to the instructions of the dryer manufacturer (*model-dependent*).

# Intended use

- for use in the household only,
- for machine-washable fabrics and hand-washable wool in detergent solution,
- to be operated with cold drinking water and commercially available detergents and care products which are suitable for use in washing machines.

- Do not leave children unattended near the washing machine.
- The washing machine is not to be used by children or persons not familiar with the operating instructions.
- Keep pets away from the washing machine.

Read these instructions and the separate installation instructions before operating the washing machine.

## Programmes

Detailed overview of programmes → page 7.

|                    |                                |
|--------------------|--------------------------------|
| <b>Cottons</b>     | hard-wearing fabrics           |
| <b>Cottons Eco</b> | hard-wearing fabrics           |
| Rinse              | with subsequent spin cycle     |
| Spin               | laundry washed by hand         |
| Drain              | the rinsing water              |
| <b>Mixed Load</b>  | different types of laundry     |
| <b>Wool</b>        | hand/machine-washable textiles |
| <b>Delicates</b>   | delicate washable fabrics      |
| <b>Easy-Care</b>   | easy-care fabrics              |

# Preparation

Correct installation according to the separate installation instructions.

**Checking the machine**  
 - Never use a damaged machine.  
 - Inform the after-sales service.

**Connecting the mains plug**  
 Make sure your hands are dry. Take hold of the plug only.

**Turning the tap on**

**Sorting and loading laundry**  
 Follow the manufacturer's care information. According to the information on the care labels. Do not exceed the maximum load → page 7.

**Add detergent and care products**  
 Measure accordingly: Amount of laundry, soiling, water hardness (ask your water supply company) and manufacturer's instructions. Pour liquid detergent into the appropriate dispenser and place in the drum.

**Setting and adjusting programmes**

**Turning the tap on**

**Compartment II:** Detergent for the main wash, water softener, bleach, stain remover  
**Compartment ☼:** Fabric softener, starch  
**Compartment I:** Detergent for pre-wash (*model-dependent*)

**Turning the tap on**

**Turning the tap on**

**Turning the tap on**

**Turning the tap on**

**Turning the tap on**

**Turning the tap on**

**Turning the tap on**

**Turning the tap on**

**Turning the tap on**

**Turning the tap on**

**Turning the tap on**

**Turning the tap on**

**Turning the tap on**

# Washing

**Turning the tap on**

**Turning the tap on**

**Turning the tap on**

**Turning the tap on**

**Turning the tap on**

**Turning the tap on**

**Turning the tap on**

**Turning the tap on**

**Turning the tap on**

**Turning the tap on**

**Turning the tap on**

**Turning the tap on**

**Turning the tap on**

**Turning the tap on**

**Turning the tap on**

**Turning the tap on**

**Turning the tap on**

**Turning the tap on**

# Removing the washing

Open the washing machine door and remove the washing.

**Turning the tap on**

**Turning the tap on**

**Turning the tap on**

**Turning the tap on**

**Turning the tap on**

**Turning the tap on**

**Turning the tap on**

**Turning the tap on**

**Turning the tap on**

**Turning the tap on**

**Turning the tap on**

**Turning the tap on**

**Turning the tap on**

**Turning the tap on**

**Turning the tap on**

**Turning the tap on**

**Turning the tap on**

# Turning the tap off

Turn the programme selector to **Off**.

**Turning the tap on**

**Turning the tap on**

**Turning the tap on**

**Turning the tap on**

**Turning the tap on**

**Turning the tap on**

**Turning the tap on**

**Turning the tap on**

**Turning the tap on**

**Turning the tap on**

**Turning the tap on**

**Turning the tap on**

**Turning the tap on**

**Turning the tap on**

**Turning the tap on**

**Turning the tap on**

**Turning the tap on**

# Individual settings

**Additional functions** → and overview of programmes, see page 7.

**Rinse Plus** An extra rinse cycle is carried out

**Express Wash** Reduced wash time - only 2 rinse cycles. Suited for slightly soiled washing. Recommended load: up to a maximum of 3 kg.

**Start** For starting or interrupting the programme.

**Turning the tap on**

**Turning the tap on**

**Turning the tap on**

**Turning the tap on**

**Turning the tap on**

**Turning the tap on**

**Turning the tap on**

**Turning the tap on**

**Turning the tap on**

**Turning the tap on**

**Turning the tap on**

**Turning the tap on**

**Turning the tap on**

**Turning the tap on**

# Important information

**Protecting the washing and the machine**  
 - When determining the dosage of all washing powders, additives and cleaning agents, you must follow the manufacturer's instructions.  
 - Empty pockets.  
 - Look out for metal items (paperclips, etc.).  
 - Wash delicates in a laundry bag (tights, curtains, underwired bras).  
 - Fasten zips, do up any buttons.  
 - Brush sand out of pockets and collars.  
 - Remove curtain fittings or place in the laundry bag.

**Washing with varying degrees of soiling**  
 Wash new items of clothing separately.

**Soaking** Load laundry of the same colour  
 Pour soaking agent/detergent into compartment II in accordance with the manufacturer's instructions. Turn the programme selector to **Cottons 20 °C** and select **Start**. After approx. 10 minutes, press **Start**, to pause the programme. Once the required soaking time has elapsed, press **Start**, again to continue the programme, or select a different programme.

**Starching** Washing must not be treated with fabric softener  
 Starching is possible in all wash programmes if liquid starch is used. Pour the starch in accordance with the manufacturer's instructions into fabric softener compartment ☼ (rinse first if necessary).

**Dyeing / Bleaching**  
 Dye should only be used in normal household quantities. Salt may damage stainless steel. Always follow the dye manufacturer's instructions! Do not use the washing machine for bleaching clothes!

**Turning the tap on**

**Turning the tap on**

**Turning the tap on**

**Turning the tap on**

**Turning the tap on**

**Turning the tap on**

**Turning the tap on**

**Turning the tap on**

**Turning the tap on**

**Turning the tap on**

**Turning the tap on**

**Turning the tap on**

**Turning the tap on**

| Programmes  | °C                    | max. | Type of laundry   |
|-------------|-----------------------|------|---|
| Cottons     | 20, 30, 40, 60, 90 °C | 6 kg | Hardwearing fabrics, heat-resistant fabrics made of cotton or linen   |
| Cottons Eco | 40, 60 °C             | 3 kg | Easy-care fabrics made of cotton, linen, synthetic fibres or blended fabrics                                  |
| Easy-Care   | 30, 40 °C             | 2 kg | Fabrics made of cotton or easy-care fabrics   |
| Mixed Load  | 30 °C                 |      | For delicate, washable fabrics, e.g. made of silk, satin, synthetic fibres or blended fabrics (e.g. curtains) |
| Delicates   | 30 °C                 |      | Hand- or machine-washable fabrics made of wool or containing wool   |
| Wool        | 30 °C                 |      |   |

Robert Bosch Hausgeräte GmbH  
Carl-Wery-Str. 34  
81739 München / Deutschland

WAE24060GB ...



Rinse Plus, Express Wash; different types of laundry can be washed together  
Rinse Plus, Express Wash; No spin between rinse cycles  
Particularly gentle wash programme to prevent shrinkage of laundry. Longer programme breaks fabrics rest in the detergent solution

## Safety instructions

- Read the instruction manual and installation instructions and all other information enclosed with the washing machine and act accordingly.
- Retain the documents for subsequent use.
- Risk of electric shock**
  - Never pull the cable to disconnect the mains plug.
  - Never insert/disconnect the mains plug with damp hands.
- Danger to life**

For worn-out appliances:

  - Disconnect the mains plug.
  - Sever the mains cable and discard along with the plug.
  - Destroy the lock on the washing machine door. This will prevent children from locking themselves in and risking their lives.
- Danger of suffocation**
  - Keep packaging, film and packaging parts out of the reach of children.
- Risk of poisoning**
  - Keep detergents and care products out of the reach of children.
- Risk of explosion**
  - Items of laundry pretreated with cleaning agents containing solvents, e.g. stain remover/cleaning solvent may cause an explosion after being loaded into the washing machine. Rinse items of laundry thoroughly by hand beforehand.
- Risk of injury**
  - The washing machine door can become very hot.
  - Be careful when draining hot detergent solution.
  - Do not climb onto the washing machine.
  - Do not lean on the open washing machine door.
  - Do not reach into the drum if it is still rotating.
  - Be careful when opening the detergent drawer while the machine is in operation.

## Consumption values depending on model

| Programme          | Load | Electricity*** | Water*** | Programme duration*** |
|--------------------|------|----------------|----------|-----------------------|
| Cottons Eco 40 °C* | 6 kg | 0,85 kWh       | 58 l     | 01:50 h               |
| Cottons 60 °C*     | 6 kg | 1,40 kWh       | 57 l     | 02:05 h               |
| Cottons 90 °C      | 6 kg | 2,10 kWh       | 62 l     | 02:05 h               |
| Easy-Care 40 °C*   | 3 kg | 0,55 kWh       | 48 l     | 01:15 h               |
| Delicates 30 °C    | 2 kg | 0,28 kWh       | 48 l     | 00:44 h               |
| Wool 30 °C         | 2 kg | 0,20 kWh       | 32 l     | 00:53 h               |

\* Programme setting for testing in accordance with valid standard EN60456. Note on comparative tests: For testing the test programmes, wash the specified load using the maximum spin speed (depending on model).

| Programme                | Load  | Annual energy consumption | Annual water consumption |
|--------------------------|-------|---------------------------|--------------------------|
| Cottons Eco 40 / 60 °C** | 6/3kg | 193kWh                    | 9600 l                   |

\*\* Programme setting for testing and energy labelling in accordance with EU directive 2010/30/EU with cold water (15 °C).  
\*\*\* The values deviate from the indicated values depending on water pressure, hardness, and inlet temperature, ambient temperature, type, amount and soiling of the laundry, detergent used, fluctuations in the power supply and selected additional functions.

## Care

- Before washing for the first time**

Do not load any laundry into the machine. Turn on the tap. Add the following to compartment **II**:

  - approx. 1 litre water
  - detergent (dosage according to the manufacturer's instructions for light soiling and the appropriate degree of water hardness)

Set the programme selector to **Cottons 60 °C** and select **Start**. At the end of the programme, turn the programme selector to **Off**.
- Machine housing, control panel**
  - Wipe with a soft, damp cloth.
  - Do not use any abrasive cloths, scourers or cleaning agents (stainless steel cleaners).
  - Remove detergent and cleaning agent residue immediately.
  - Do not clean with a jet of water.
- Cleaning the detergent drawer and housing...**

... if it contains detergent or fabric softener residues.

  - Pull the drawer out, press down the insert and fully remove the drawer from the housing.
  - To remove the insert: press the insert upwards from below with your finger.
  - Clean the detergent dispenser tray and insert with water and a brush and dry it. Also remove any detergent or fabric softener residues in the housing.
  - Attach the insert and engage (connect the cylinder to the guide pin).
  - Push in the detergent drawer.
- Leave the detergent drawer open so that any residual water can evaporate.
- Washing drum and rubber seal**

Wipe the inside of the rubber seal dry with a cloth. Leave the washing machine door open so that the drum can dry out. Rust stains - use chlorine-free cleaning agent, not steel wool.
- Descaling**

Ensure there is no laundry in the machine

Descalate the appliance according to the descaler manufacturer's instructions. This should not be necessary if the correct dosage of detergent is used.

## Information to indicator lights

| Indicator lights                                    | Meaning  |
|---|--|
| Indicator lights <b>Rinse</b> and <b>Wash</b> flash | Close the washing machine door properly; laundry may be caught.  |
| Indicator lights <b>Spin</b> and <b>Wash</b> flash  | Open the tap completely, supply hose kinked or trapped; Clean the filter → page 10, Water pressure too low.  |
| Indicator lights <b>Spin</b> and <b>Rinse</b> flash | Detergent solution pump blocked; Clean the detergent solution pump → page 10<br>Drainage hose/waste pipe blocked; Clean the drainage hose at the siphon → page 10. |
| Indicator light <b>Rinse</b> flashes                | Motor fault. Call the after-sales service.   |
| All indicator lights flash                          | Turn off the tap and call the after-sales service.   |

## Maintenance

- Detergent solution pump**

Turn the programme selector to **Off** and disconnect the mains plug.

  - Open and remove the service flap.
  - For models with a drainage hose:** Remove the drainage hose from the retainer and pull it from the housing. Remove the container. Remove the sealing cap, allow the detergent solution to flow out. Replace the sealing cap and place the drainage hose in the retainer.
  - For models without a drainage hose:** Carefully unscrew the pump cover until the detergent solution begins to flow out. When the service flap is half full, close the pump cover and empty the service flap. Repeat the above steps until all the detergent solution has completely drained out.
  - Carefully unscrew the pump cover (residual water).
  - Clean the interior, pump cover thread and pump housing (the impeller in the detergent solution pump must rotate).
  - Replace the pump cover and screw it tightly in place.
  - Place the service flap back on and close.

To prevent unused detergent from flowing straight into the drain during the next wash: pour 1 litre of water into compartment **II** and start the **Drain** programme.
- Drainage hose at the siphon**

Turn the programme selector to **Off** and disconnect the mains plug.

  - Loosen the hose clamp, carefully remove the drainage hose (residual water).
  - Clean the drainage hose and siphon connecting piece.
  - Reattach the drainage hose and secure the connection with the hose clamp.
- Filter in the water supply**

Reduce the water pressure in the supply hose:

  - Turn off the tap.
  - Select any programme (except for **Spin / Drain**).
  - Select **Start**. Let the programme run for approximately 40 seconds.
  - Turn the programme selector to **Off**. Disconnect the mains plug.

Clean the filter:

  - Depending on model: Disconnect the hose from the tap. Clean the filter using a small brush.

and/or for Standard and Aqua-Secure models:

Remove the hose on the rear of the appliance. Remove the filter with pliers and clean.

  - Connect the hose and check for leaks.

## What to do if ...

- Water is leaking out.
    - Attach/replace the drainage hose correctly.
    - Tighten the screw connection of the supply hose.
  - No water supply. Detergent not dispensed.
    - Start** not selected?
    - Tap not turned on?
    - Filter blocked? Clean the filter → page 10.
    - Supply hose kinked or trapped?
  - Washing machine door cannot be opened.
    - Safety function active. Wait approx. 2 minutes.
  - Programme does not start.
    - Start** selected?
    - Washing machine door closed?
  - Detergent solution is not drained.
    - Clean the detergent solution pump → page 10.
    - Clean the waste pipe and/or drainage hose.
  - Water not visible in the drum.
    - Not a fault - water below the visible area.
  - Unsatisfactory spin result. Laundry wet/too damp.
    - Not a fault - the unbalanced-load detection system has cancelled the spin cycle because of uneven distribution of the laundry. Distribute small and large items of laundry evenly inside the drum.
  - Spin cycle performed several times.
    - Not a fault - unbalanced load detection system adjusts the imbalance.
  - Residual water in the compartment for care products.
    - Not a fault - the action of the care product is not affected.
    - Clean the insert if necessary → page 9.
  - Odour formation in the washing machine.
    - Run programme **Cottons 90 °C** without laundry. Use standard detergent.
  - Foam escaping from the detergent drawer.
    - Too much detergent used? If foam is escaping from the detergent drawer: Mix 1 tablespoon of fabric softener with ½ litre of water and pour into compartment **II** (not with outdoor or down fabrics).
    - Reduce the detergent dosage for the next wash cycle.
  - Intense noise formation, vibrations and "walking" during the spin cycle.
    - Are the appliance feet fixed? Secure the appliance feet → *Installation instructions*.
    - Transportation safety devices removed? Remove the transportation safety devices → *Installation instructions*.
  - Noises during spin and drain cycles.
    - Clean detergent-solution pump → page 10.
  - The indicator lights do not function during operation.
    - Power cut?
    - Fuses tripped? Reset/change the fuse.
    - If the fault occurs repeatedly, call the after-sales service.
  - Programme sequence longer than usual.
    - Not a fault - unbalanced load detection system adjusts imbalance by repeatedly distributing the laundry.
    - Not a fault - foam detection system active - adds an additional rinse cycle.
  - Detergent residues on the laundry.
    - Occasionally, phosphate-free detergents contain water-insoluble residues.
    - Select **Rinse** or brush out the laundry after washing.
- If you cannot correct a fault yourself (switching on/off) or a repair is required:
- Turn the programme selector to **Off** and remove the mains plug from the socket.
  - Turn off the water supply and call the after-sales service → *Installation instructions*.



Washing machine



en Instruction manual

# Your washing machine

**Congratulations** - You have opted for a modern, high-quality domestic appliance manufactured by Bosch. This washing machine is distinguished by its economical water and energy consumption. Each machine that leaves our factory has been inspected thoroughly to ensure that it functions properly and is in perfect condition.

For further information and a selection of our products go to our web site: [www.bosch-home.com](http://www.bosch-home.com)

You can find the contact details for your nearest after-sales service here or in the after-sales service directory (depending on model).  
**GB** 0844 8928979  
 Calls from a BT landline will be charged at up to 3 pence per minute. A call set-up fee of up to 6 pence may apply.  
**IE** 01450 2655

## Environmentally friendly waste disposal



All packaging must be disposed of in accordance with environmental guidelines.

This appliance is certified in accordance with European Directive 2002/96/EC on waste electrical and electronic equipment (WEEE). This directive provides the framework for the EU-wide collection and reuse of used appliances.

## Contents

|   | Page |
|---|------|
| Intended use .....                        | 1    |
| Programmes .....                          | 1    |
| Setting and adjusting the programme ..... | 3    |
| Washing .....                             | 3/4  |
| After washing .....                       | 4    |
| Individual settings .....                 | 5    |
| Important information .....               | 6    |
| Overview of programmes .....              | 7    |
| Safety instructions .....                 | 8    |
| Consumption values .....                  | 8    |
| Care .....                                | 9    |
| Information to indicator lights .....     | 9    |
| Maintenance .....                         | 10   |
| What to do if.....                        | 11   |



### Environmental protection/Conservation tips

- Always fill the washing machine with a maximum amount of laundry for the relevant programme.
- Wash normally soiled washing without a pre-wash (*model-dependent*).
- Instead of **Cottons 90 °C**, choose the programme **Cottons Eco 60 °C**. Comparable cleaning result with significantly lower energy consumption.
- Measure the detergent according to the manufacturer's instructions and water hardness.
- If the laundry is then dried in the tumble dryer, select the spin speed according to the instructions of the dryer manufacturer (*model-dependent*).

## Intended use

- for use in the household only,
- for machine-washable fabrics and hand-washable wool in detergent solution,
- to be operated with cold drinking water and commercially available detergents and care products which are suitable for use in washing machines.

- Do not leave children unattended near the washing machine.
- The washing machine is not to be used by children or persons not familiar with the operating instructions.
- Keep pets away from the washing machine.



Read these instructions and the separate installation instructions before operating the washing machine.

## Programmes

Detailed overview of programmes → page 7.

|                    |                                |
|--------------------|--------------------------------|
| <b>Cottons</b>     | hard-wearing fabrics           |
| <b>Cottons Eco</b> | hard-wearing fabrics           |
| Rinse              | with subsequent spin cycle     |
| Spin               | laundry washed by hand         |
| Drain              | the rinsing water              |
| <b>Mixed Load</b>  | different types of laundry     |
| / <b>Wool</b>      | hand/machine-washable textiles |
| <b>Delicates</b>   | delicate washable fabrics      |
| <b>Easy-Care</b>   | easy-care fabrics              |

## Preparation



Correct installation according to the separate *Installation instructions*.



### Checking the machine

- Never use a damaged machine.
- Inform the after-sales service.



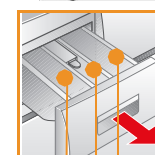
### Connecting the mains plug



Make sure your hands are dry. Take hold of the plug only.



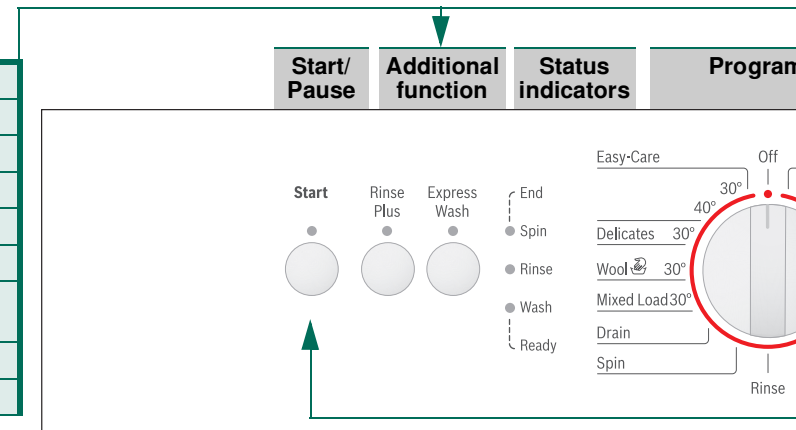
### Turning the tap on



**Compartment II:** Detergent for the main wash, water softener, bleach, stain remover

**Compartment** : Fabric softener, starch

**Compartment I:** Detergent for pre-wash (*model-dependent*)



Pro  
swi  
and  
the  
tur

**Before washing for the first time**  
Wash once without any laundry → page 9.

### Sorting and loading laundry

Follow the manufacturer's care information. According to the information on the care labels. According to type, colour, soiling and temperature. Do not exceed the maximum load → page 7.

Observe the important information → page 6. Insert large and small items of laundry.

Close the washing machine door. Take care not to trap items of laundry between the washing machine door and the rubber seal.

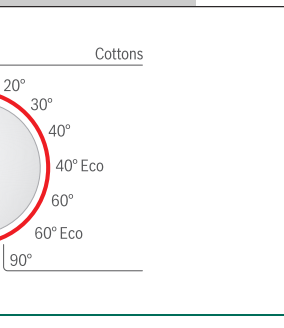
### Add detergent and care products

Measure accordingly: Amount of laundry, soiling, water hardness (ask your water supply company) and manufacturer's instructions. Pour liquid detergent into the appropriate dispenser and place in the drum.

**i** Dilute thick fabric softener and fabric conditioner with water. This prevents blockages.

### Setting and adjusting programmes

Programme selector

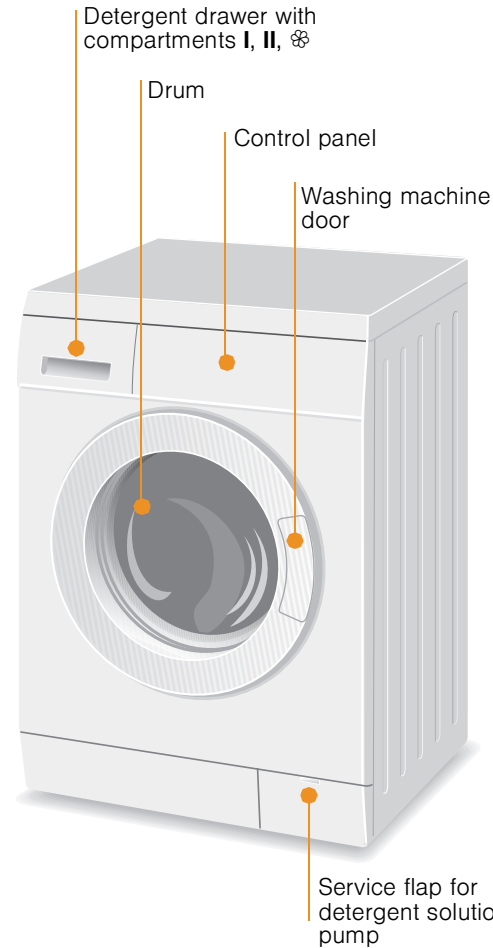


Programme selector for switching the machine on and off and for selecting programme. Can be turned in either direction.

**i** Additional function → Individual settings, page 5.

**Select Start**

## Washing



## Washing

### Removing the washing

Open the washing machine door and remove the washing.

**i** – Remove any foreign objects - risk of rusting.  
– Leave the washing machine door and detergent drawer open so that any residual water can evaporate.

### Turning the tap off

### Switching off

Turn the programme selector to **Off**.

### End of programme when ...

... the status indicator **Spin - End** flashes.

### Interrupting the programme

Programmes at high temperatures:  
– Cool washing: Select **Rinse**.  
– Select **Start**.

Programmes at lower temperatures:  
– Select **Spin** or **Drain**.  
– Select **Start**.

### Changing the programme, if ...

... you have selected the wrong programme by mistake:  
– Reselect the programme.  
– Select **Start**. The new programme starts from the beginning.

# Individual settings

**Additional functions** → and overview of programmes, see page 7.

**Rinse Plus** An extra rinse cycle is carried out

**Express Wash** Reduced wash time - only 2 rinse cycles. Suited for slightly soiled washing. Recommended load: up to a maximum of 3 kg.

## Start

For starting or interrupting the programme.



# Important information



## Protecting the washing and the machine

- When determining the dosage of all washing powders, additives and cleaning agents, you must follow the manufacturer's instructions.
- Empty pockets.
- Look out for metal items (paperclips, etc.).
- Wash delicates in a laundry bag (tights, curtains, underwired bras).
- Fasten zips, do up any buttons.
- Brush sand out of pockets and collars.
- Remove curtain fittings or place in the laundry bag.



## Washing with varying degrees of soiling

|       |  |  |
|-------|--|--|
|       |  | Wash new items of clothing separately.                                       |
| light |  | Do not pre-wash.   |
|       |  | If required, pretreat stains.<br>Select programme <b>Cottons Eco 60 °C</b> . |
| heavy |  | Load less washing.<br>Select programme <b>Cottons Eco 60 °C</b> .            |



## Soaking


*Load laundry of the same colour*

Pour soaking agent/detergent into compartment **II** in accordance with the manufacturer's instructions. Turn the programme selector to **Cottons 20 °C** and select **Start**. After approx. 10 minutes, press **Start**, to pause the programme. Once the required soaking time has elapsed, press **Start**, again to continue the programme, or select a different programme.



## Starching

*Washing must not be treated with fabric softener*

Starching is possible in all wash programmes if liquid starch is used. Pour the starch in accordance with the manufacturer's instructions into fabric softener compartment  (rinse first if necessary).



## Dyeing / Bleaching

Dye should only be used in normal household quantities. Salt may damage stainless steel. Always follow the dye manufacturer's instructions! Do **not** use the washing machine for bleaching clothes!

# Overview of programmes

→ refer to the table of consumption values on page 8 and notes on page 6.

| Programmes         | °C                    | max. | Type of laundry   | Additional functions; information  |
|--------------------|-----------------------|------|---|--|
| <b>Cottons</b>     | 20, 30, 40, 60, 90 °C |      |   |  |
| <b>Cottons Eco</b> | 40, 60 °C             | 6 kg | Hard-wearing fabrics; heat-resistant fabrics made of cotton or linen  | Rinse Plus, Express Wash   |
| <b>Easy-Care</b>   | 30, 40 °C             | 3 kg | Easy-care fabrics made of cotton, linen, synthetic fibres or blended fabrics                                  | Rinse Plus, Express Wash   |
| <b>Mixed Load</b>  | 30 °C                 |      | Fabrics made of cotton or easy-care fabrics   | Rinse Plus, Express Wash; different types of laundry can be washed together  |
| <b>Delicates</b>   | 30 °C                 |      | For delicate, washable fabrics, e.g. made of silk, satin, synthetic fibres or blended fabrics (e.g. curtains) | Rinse Plus, Express Wash; No spin between rinse cycles   |
| <b>/ Wool</b>      | 30 °C                 | 2 kg | Hand- or machine-washable fabrics made of wool or containing wool   | Particularly gentle wash programme to prevent shrinkage of laundry. Longer programme breaks (fabrics rest in the detergent solution) |

## Additional programmes

**Rinse, Spin, Drain**  
 i Programmes without prewash - add detergent to compartment **II**, programmes with prewash - distribute the detergent between compartments **I** and **II** (model-dependent).

9305 / 9000896221



WAE24060GB ...

Robert Bosch Hausgeräte GmbH  
 Carl-Wery-Str. 34  
 81739 München / Deutschland

## ! Safety instructions

- Read the instruction manual and installation instructions and all other information enclosed with the washing machine and act accordingly.
- Retain the documents for subsequent use.

**Risk of electric shock**

- Never pull the cable to disconnect the mains plug.
- Never insert/disconnect the mains plug with damp hands.

**Danger to life**

For worn-out appliances:

- Disconnect the mains plug.
- Sever the mains cable and discard along with the plug.
- Destroy the lock on the washing machine door. This will prevent children from locking themselves in and risking their lives.

**Danger of suffocation**

- Keep packaging, film and packaging parts out of the reach of children.

**Risk of poisoning**

- Keep detergents and care products out of the reach of children.

**Risk of explosion**

- Items of laundry pretreated with cleaning agents containing solvents, e.g. stain remover/cleaning solvent may cause an explosion after being loaded into the washing machine. Rinse items of laundry thoroughly by hand beforehand.

**Risk of injury**

- The washing machine door can become very hot.
- Be careful when draining hot detergent solution.
- Do not climb onto the washing machine.
- Do not lean on the open washing machine door.
- Do not reach into the drum if it is still rotating.
- Be careful when opening the detergent drawer while the machine is in operation.

## Consumption values depending on model

| Programme          | Load | Electricity*** | Water*** | Programme duration** |
|--------------------|------|----------------|----------|----------------------|
| Cottons Eco 40 °C* | 6 kg | 0,85 kWh       | 58 l     | 01:50 h              |
| Cottons 60 °C*     | 6 kg | 1,40 kWh       | 57 l     | 02:05 h              |
| Cottons 90 °C      | 6 kg | 2,10 kWh       | 62 l     | 02:05 h              |
| Easy-Care 40 °C*   | 3 kg | 0,55 kWh       | 48 l     | 01:15 h              |
| Delicates 30 °C    | 2 kg | 0,28 kWh       | 48 l     | 00:44 h              |
| / Wool 30 °C       | 2 kg | 0,20 kWh       | 32 l     | 00:53 h              |

\* Programme setting for testing in accordance with valid standard EN60456.  
 Note on comparative tests: For testing the test programmes, wash the specified load using the maximum spin speed (depending on model).

| Programme                | Load  | Annual energy consumption | Annual water consumption |
|--------------------------|-------|---------------------------|--------------------------|
| Cottons Eco 40 / 60 °C** | 6/3kg | 193kWh                    | 9600 l                   |

\*\* Programme setting for testing and energy labelling in accordance with EU directive 2010/30/EU with cold water (15 °C).  
 \*\*\* The values deviate from the indicated values depending on water pressure, hardness, and inlet temperature, ambient temperature, type, amount and soiling of the laundry, detergent used, fluctuations in the power supply and selected additional functions.

## Care



- Risk of electric shock. Disconnect the mains plug.
- Risk of explosion. No solvents.

### **i** Before washing for the first time

Do not load any laundry into the machine. Turn on the tap.

Add the following to compartment **II**:

- approx. 1 litre water
- detergent (dosage according to the manufacturer's instructions for light soiling and the appropriate degree of water hardness)

Set the programme selector to **Cottons 60 °C** and select **Start**. At the end of the programme, turn the programme selector to **Off**.

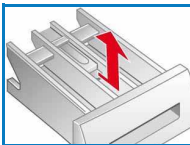
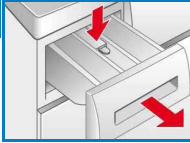
### **i** Machine housing, control panel

- Wipe with a soft, damp cloth.
- Do not use any abrasive cloths, scourers or cleaning agents (stainless steel cleaners).
- Remove detergent and cleaning agent residue immediately.
- Do not clean with a jet of water.

### **i** Cleaning the detergent drawer and housing...

... if it contains detergent or fabric softener residues.

1. Pull the drawer out, press down the insert and fully remove the drawer from the housing.
2. To remove the insert: press the insert upwards from below with your finger.
3. Clean the detergent dispenser tray and insert with water and a brush and dry it. Also remove any detergent or fabric softener residues in the housing.
4. Attach the insert and engage (connect the cylinder to the guide pin).
5. Push in the detergent drawer.



**i** Leave the detergent drawer open so that any residual water can evaporate.

### **i** Washing drum and rubber seal

Wipe the inside of the rubber seal dry with a cloth. Leave the washing machine door open so that the drum can dry out. Rust stains - use chlorine-free cleaning agent, not steel wool.

### **i** Descaling

*Ensure there is no laundry in the machine*

Descale the appliance according to the descaler manufacturer's instructions. This should not be necessary if the correct dosage of detergent is used.

## Information to indicator lights

Indicator lights for status displays and/or buttons flash:

|   |   |
|---|---|
| Indicator lights<br><b>Rinse</b> and<br><b>Wash</b> flash | Close the washing machine door properly; laundry may be caught.   |
| Indicator lights<br><b>Spin</b> and<br><b>Wash</b> flash  | Open the tap completely, supply hose kinked or trapped;<br>Clean the filter → <i>page 10</i> , Water pressure too low.  |
| Indicator lights<br><b>Spin</b> and<br><b>Rinse</b> flash | Detergent solution pump blocked; Clean the detergent solution pump<br>→ <i>page 10</i> .<br>Drainage hose/waste pipe blocked; Clean the drainage hose at the<br>siphon → <i>page 10</i> . |
| Indicator light<br><b>Rinse</b> flashes                   | Motor fault. Call the after-sales service.  |
| All indicator lights flash                                | Turn off the tap and call the after-sales service.  |

## Maintenance

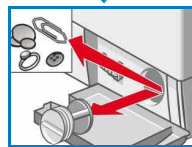
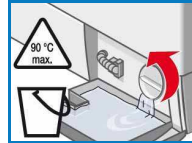
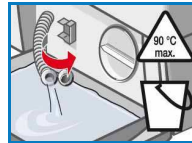
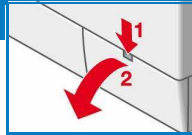


- Risk of scalding. Allow the detergent solution to cool down.
- Turn off the tap.

### **i** Detergent solution pump

Turn the programme selector to **Off** and disconnect the mains plug.

1. Open and remove the service flap.
2. **For models with a drainage hose:** Remove the drainage hose from the retainer and pull it from the housing. Remove the container. Remove the sealing cap, allow the detergent solution to flow out. Replace the sealing cap and place the drainage hose in the retainer.
- 2\* **For models without a drainage hose:** Carefully unscrew the pump cover until the detergent solution begins to flow out. When the service flap is half full, close the pump cover and empty the service flap. Repeat the above steps until all the detergent solution has completely drained out.
3. Carefully unscrew the pump cover (residual water).
4. Clean the interior, pump cover thread and pump housing (the impeller in the detergent solution pump must rotate).
5. Replace the pump cover and screw it tightly in place.
6. Place the service flap back on and close.

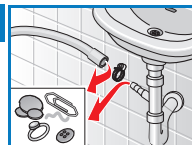


To prevent unused detergent from flowing straight into the drain during the next wash: pour 1 litre of water into compartment **II** and start the **Drain** programme.

### **i** Drainage hose at the siphon

Turn the programme selector to **Off** and disconnect the mains plug.

1. Loosen the hose clamp, carefully remove the drainage hose (residual water).
2. Clean the drainage hose and siphon connecting piece.
3. Reattach the drainage hose and secure the connection with the hose clamp.



### **i** Filter in the water supply

Reduce the water pressure in the supply hose:

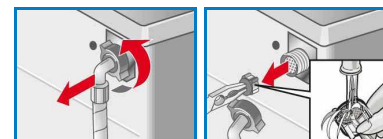
1. Turn off the tap.
2. Select any programme (except for **Spin / Drain**).
3. Select **Start**. Let the programme run for approximately 40 seconds.
4. Turn the programme selector to **Off**. Disconnect the mains plug.

Clean the filter:

1. Depending on model:  
Disconnect the hose from the tap.  
Clean the filter using a small brush.

**and/or** for Standard and Aqua-Secure models:

1. Remove the hose on the rear of the appliance.  
Remove the filter with pliers and clean.
2. Connect the hose and check for leaks.



## What to do if ...

- Water is leaking out.
  - Attach/replace the drainage hose correctly.
  - Tighten the screw connection of the supply hose.
- No water supply.  
Detergent not dispensed.
  - **Start** not selected?
  - Tap not turned on?
  - Filter blocked? Clean the filter → *page 10*.
  - Supply hose kinked or trapped?
- Washing machine door cannot be opened.
  - Safety function active. Wait approx. 2 minutes.
- Programme does not start.
  - **Start** selected?
  - Washing machine door closed?
- Detergent solution is not drained.
  - Clean the detergent solution pump → *page 10*.
  - Clean the waste pipe and/or drainage hose.
- Water not visible in the drum.
  - Not a fault - water below the visible area.
- Unsatisfactory spin result.  
Laundry wet/too damp.
  - Not a fault - the unbalanced-load detection system has cancelled the spin cycle because of uneven distribution of the laundry. Distribute small and large items of laundry evenly inside the drum.
- Spin cycle performed several times.
  - Not a fault - unbalanced load detection system adjusts the imbalance.
- Residual water in the compartment for care products.
  - Not a fault - the action of the care product is not affected.
  - Clean the insert if necessary → *page 9*.
- Odour formation in the washing machine.
  - Run programme **Cottons 90 °C** without laundry. Use standard detergent.
- Foam escaping from the detergent drawer.
  - Too much detergent used?
  - If foam is escaping from the detergent drawer: Mix 1 tablespoon of fabric softener with ½ litre of water and pour into compartment **II** (*not with outdoor or down fabrics*).
  - Reduce the detergent dosage for the next wash cycle.
- Intense noise formation, vibrations and “walking” during the spin cycle.
  - Are the appliance feet fixed?
  - Secure the appliance feet → *Installation instructions*.
  - Transportation safety devices removed?
  - Remove the transportation safety devices → *Installation instructions*.
- Noises during spin and drain cycles.
  - Clean detergent-solution pump → *page 10*.
- The indicator lights do not function during operation.
  - Power cut?
  - Fuses tripped? Reset/change the fuse.
  - If the fault occurs repeatedly, call the after-sales service.
- Programme sequence longer than usual.
  - Not a fault - unbalanced load detection system adjusts imbalance by repeatedly distributing the laundry.
  - Not a fault - foam detection system active - adds an additional rinse cycle.
- Detergent residues on the laundry.
  - Occasionally, phosphate-free detergents contain water-insoluble residues.
  - Select **Rinse** or brush out the laundry after washing.

If you cannot correct a fault yourself (switching on/off) or a repair is required:

- Turn the programme selector to **Off** and remove the mains plug from the socket.
- Turn off the water supply and call the after-sales service → *Installation instructions*.



Washing machine



en Instruction manual