

Your washer dryer

Congratulations – You have opted for a modern, high-quality domestic appliance manufactured by SIEMENS. The washer dryer is distinguished by its economical use of water and energy. Each appliance which leaves our factory is inspected thoroughly to ensure that it functions properly and is in perfect condition.

For further information about products, accessories, spare parts and services visit our web site: www.siemens-home.com or contact our after-sales service centres.

Contents

- Intended use.....1
- Preparation..... 1/2
- Preparation Washing or Washing+Drying2/3/4
- Preparation Drying.....2/3/4
- Set and adjust the programme.....3/4/5
- After washing/drying.....5
- Important information.....6
- Programme overview.....7
- Drying table.....8
- Consumption values.....8
- Display and Option buttons.....9
- Additional functions and Individual settings.....10
- Information on the display.....11
- Safety instructions.....11
- What to do if.....12/13
- Emergency release.....13

Intended use

- For domestic use only.
- For the washing of machine-washable fabrics in a detergent solution.
- To be operated with cold mains water and commercially available low foam detergents and care products which are suitable for use in front loaded washer dryer.



- Do not leave children unattended near the washer dryer.
- Keep pets away from the washer dryer!
- The washer dryer is not to be used by children or persons not familiar with the operating instructions.
- Install and operate the washer dryer in a room with a drain.
- In order to ensure your safety, you must plug the cable into a socket which has a reliable earth connection.

Preparation

Before using for the first time → Page 6

The washer dryer was tested before leaving the factory. To remove any water left over from testing procedures, the first cycle should be carried out without any laundry with **Fluff Clean** programme. →Page 6: **Before using for the first time**



Correct installation according to separate Installation and maintenance instructions.



Check the machine

- Never switch on a damaged machine!
- Inform your customer service!



Insert mains plug

- With dry hands only!
Take hold of the plug only!



Turn on the tap

- At the end of the drying programme there is an automatic cleaning fluff process, turn on the water tap even if a drying programme is selected.

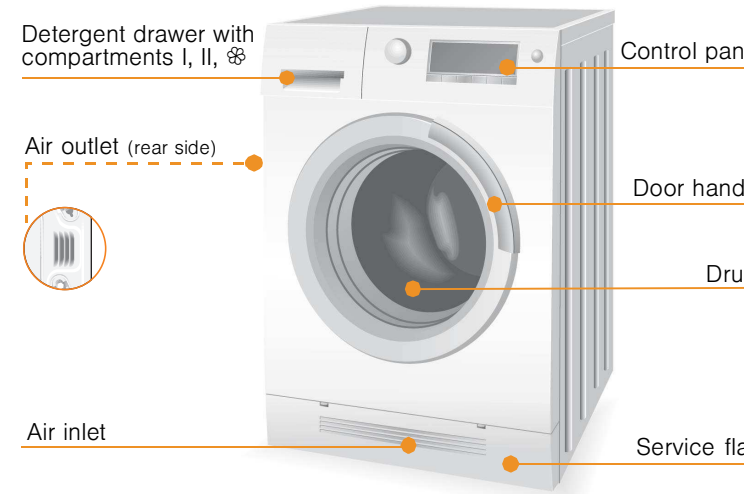


Provide good ventilation

- Good ventilation is required to extract air produced during drying.
- Keep the installation room well ventilated.
- Clean the air inlet filter regularly.
- Do not block the air inlet and/or air outlet.

Drying

Washing Washing & Drying without interruption



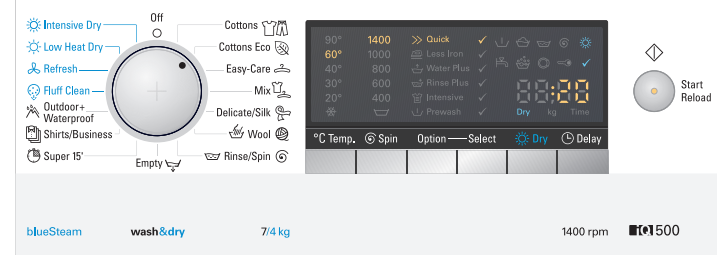
Protection of the environment/ Conservation tips

- Load the maximum amount of laundry to wash or dry for the particular programme. →Page 7: **Programme overview**
- Wash normally soiled laundry without prewash.
- Select **Cottons Eco 60°C** and additional function **Intensive** to obtain good cleaning results with significantly lower energy consumption.
- Dose the detergent according to the manufacturer's instructions and water hardness.
- If the laundry is then to be dried in the appliance, select the highest selectable spin speed – because the more water that is spun out of the appliance, the less time and energy is required to dry it.
- Keep the installation room well ventilated, clean the air inlet filter regularly.
- Please do not dry dripping-wet laundry.
- Waste of time and energy!**

Programme selector

Display panel/ Option buttons/ Additional functions

Start/ Reload



Programme selector for switching the machine on and off and for selecting the programme. Can be rotated in either direction.
Detailed programme overview. → Page 7/8

Sort and load the laundry

- Observe the care information provided by the manufacturer.
- Sort according to the information on the care labels.
- Sort according to type, colour, soiling and temperature.
- Remove any foreign objects – risk of rusting.
- Do not exceed the maximum load. →Page 7
- If drying programme selected. →Page 4: **Sort and load the laundry (drying)**

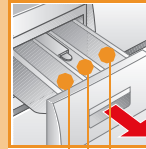


- Observe the instructions in the Important information section. →Page 6
- Load both large and small items of washing.
- Close the washer dryer door. Take care not to trap any items of clothing between the loading door and rubber seal.



Add detergent and care product

- Add the appropriate dose according to: Amount of washing, soiling, water hardness (ask your water supply company) and manufacturer's instructions.
- Models without insert for liquid detergent: pour liquid detergent into an appropriate compartment and place in the drum.
- Use commercially available low foam detergents for washer dryer only.
- During operation: close the detergent drawer!



Compartment II: Detergent for the main wash, water softener, bleach, stain remover

Compartment III: Fabric softener

Compartment I: Detergent for pre-wash

Sort and load the laundry (drying)



Only dry laundry that is labelled with the following care symbols:

- ☐ = tumble-dry at normal heat setting (**Intensive Dry**).
- ☐ = tumble-dry at low heat setting (**Low Heat Dry**).

The following text tiles should not be tumble-dried:

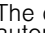
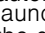
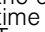
- ☒ = do not tumble-dry care symbol.
- Woollens or items containing wool. **Risk of shrinking!**
- Delicate fabric (silk, synthetic net curtain). **Risk of creasing!**
- Items containing foam rubber or similar material.
- Items which have been treated with flammable solvents, such as stain removers, petrol, paint thinners. **Explosion hazard!**
- Items still containing hair lacquer or similar substances.


Dangerous vapours!

Do not exceed the maximum drying load. →Page 7

Set and adjust the drying programme


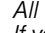
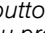
- Turn the programme selector to **Intensive Dry** or **Low Heat Dry**. →Page 7: **Programme overview**

The default drying mode is , in this mode the drying time automatically adjusted to the load amount to obtain cupboard dry laundry ready to fold and stack in the cupboard. You can change the drying mode to  in order to obtain extra dry laundry, or time dry and define the drying time by touching the  **Dry** button. To estimate or select drying duration. →Page 8: **Drying table**


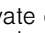

i All buttons are sensitive and a gentle touch is adequate! If you press and hold the  **Delay** option buttons, the setting options automatically scroll through.

Set and adjust the programme

- Turn the programme selector to desired washing programme. →Page 7: **Programme overview**
- Use option buttons and additional functions. →Page 9/10

i All buttons are sensitive and a gentle touch is adequate! If you press and hold the ,  **Spin** or  **Delay** option buttons, the setting options automatically scroll through.

If washing and drying without interruption is desired (only possible for **Cottons**, **Cottons Eco**, **Mix**, **Easy-Care** and **Shirts/Business**)

- Activate drying function  or  by touching  **Dry** button. →Page 9
- Do not exceed the maximum load for the drying function. →Page 7
- Select maximum selectable spin speed of washing programme to ensure the drying result.



Select  **Start/Reload**

... Drying

... Washing/Washing + drying

Select  **Start/Reload**



Removing laundry

Open washer dryer door and remove laundry. Leave the washer dryer door and detergent drawer open so that any residual water can evaporate!



Turn off the tap

Not required for Aqua-Stop models. → *Installation maintenance instructions: Page 9*



Switch off

– Set programme selector to **Off**.

Programme ended when ...

... Start/Reload indicator light goes out and or (if was selected, no final spin/drain) appears on the display field, the buzzer sounds. Set volume of buzzer. → *Page 10*

If was selected, and is displayed, touch the **Start/Reload**.

- The programme continues with draining the water and spinning the laundry (the default spin speed can be changed in advance).
- If you only want to drain the water, touch the **Start/Reload** button again when the spinning starts. The programme is paused and the door lock is released. You can remove the laundry.

If flashes on the display field before the end of a drying programme → high drum temperature. Cool-down programme is running until drum is cooled down. → *Page 11: Information on the display*

Change the programme ...

If you have selected the wrong programme by mistake:

- Reselect the washing/drying programme.
- If required, adjust the programme setting and/or select additional functions. → *Page 9/10*
- Select **Start/Reload**.

Pause the programme ...

- Touch the **Start/Reload** button.
- Follow the instructions in the display field: when lights up and appears in the display, the door can be opened. If required, add/remove a laundry item; If and are displayed alternately, the door cannot be opened due to a high water level in drum or a high temperature.
- Touch **Start/Reload** button to continue the programme.
- The pause function cannot be activated during drying phase.

... or terminate the programme

Washing programmes with high temperature:

- Cool down laundry: Select **Rinse/Spin**, touch **Start/Reload**.

Washing programmes at lower temperature:

- Select **Rinse/Spin**, touch **Start/Reload**.

Drying programme:

- Select **Intensive Dry** or **Low Heat Dry**, touch **Dry** option button, set 15 minutes drying time, then touch **Start/Reload** button.



Important information



Washing drying preparing/Protecting the laundry and the machine

- Empty pockets.
- Look out for metal items (paperclips, etc.).
- Trousers, knitwear and knitted textiles, e.g. Jersey garments, T-shirts or sweatshirts should be turned inside out.
- Ensure that underwired bras are machine washable.
- Wash delicates in a net/bag (tights, curtains, underwired bras).
- Fasten zips, do up any buttons.
- Brush sand out of pockets and collars.
- Remove curtain hooks or place curtains in a net/bag.
- Use only tumble-dry textiles if you select drying.
- Before tumble-drying, handwash items should be spun using the appropriate spin speed.
- Remove as much water as possible before tumble-drying. Recommended spin speed for cottons is more than 1000 rpm; for easy-care is more than 800 rpm.
- In order to ensure uniform drying, sort the items according to fabric type and degree of drying required.
- Items which require ironing do not have to be ironed immediately after being tumble-dried. It is a good idea to fold or roll them together for a while, so that any remaining moisture is evenly distributed.
- To achieve good drying performance, dry quilt covers, terry towels or other large textile items individually. Terry towels not more than 4 pieces (or 3 kg).



Before using for the first time

Do not put any laundry in the washer dryer. Turn on the tap, pour ½ measuring cup of detergent into compartment **II**. Set the **Fluff Clean 40 °C** programme and select **Start/Reload**. At the end of the programme, set the programme selector to **Off**.



Laundry with different degrees of soiling

Light



Wash new items separately.

Do not prewash.

If required, pretreat stains. Select **Cottons Eco** programme or **Intensive** additional function.

Heavy



Load less laundry. Prewash.

If required, pretreat stains. Select **Cottons Eco** programme or **Intensive** additional function.



Soaking

Load laundry of the same colour.

Pour soaking agent/detergent into compartment **II** according to the manufacturer's instructions. Set **Cottons 30 °C** programme and select **Start/Reload**. After approx. 10 minutes, select **Start/Reload**. After the required soaking time, reselect **Start/Reload** if the programme is to be continued or change the programme.



Starching

Laundry must not be treated with fabric softener.

Starching is possible in all wash programmes using liquid starch. Pour the starch into the fabric softener compartment according to the manufacturer's instructions (if necessary clean it first).



Dyeing/bleaching

Dye should only be used in normal household quantities. Salt may damage stainless steel. Always follow the dye manufacturer's instructions. **Do not** bleach laundry in the washing machine.



Outdoor+Waterproof

Laundry must not be treated with fabric softener.

Special detergents and impregnating agents suitable for machine washing are available in sports shops. Dose according to manufacturer's instructions:

1. Place the special detergent for outdoor clothing in compartment **II** and
2. pour impregnating agent (max. 170 ml) into the compartment.

Move the programme selector to **Outdoor+Waterproof**. Select temperature. Touch **Start/Reload**. Final treatment of laundry according to manufacturer's instructions.

Programme overview

(see also the information on page 9, 10)



Programmes °C max. load (kg)* Type of laundry

Additional functions; information

Programmes	°C	max. load (kg)*	Type of laundry	Additional functions; information
Cottons	* - 90	7,0/4,0***	Hard-wearing textiles, heat-resistant textiles made of cotton or linen	Quick** , Less Iron , Water Plus , Rinse Plus , Intensive** , Prewash
Cottons Eco	* - 60		Hard-wearing textiles made of cotton or linen	Less Iron , Water Plus , Rinse Plus , Intensive , Prewash
Shirts/Business	* - 60	2,0/2,0***	Non-iron shirts made of cotton, linen, synthetic fibres or blended fabrics.	Less Iron , Water Plus , Rinse Plus , Intensive , Prewash
Easy-Care	* - 60		Easy-Care textiles made of cotton, linen, synthetic fibres or blended fabrics	Less Iron , Water Plus , Rinse Plus , Intensive , Prewash
Mix	* - 60	3,5/2,5***	Textiles made of cotton and easy-care textiles	Quick** , Less Iron , Water Plus , Rinse Plus , Intensive** , Prewash different types of textiles which can be washed together
Outdoor+ Waterproof	* - 40	2,0	Washing with subsequent waterproofing of all-weather, sportswear and outdoor clothing, and clothing with a weatherproof membrane, waterproof fabrics	Water Plus , Rinse Plus , Intensive further information on Impregnation; → Page 6 reduced final spin at intervals
Delicate/Silk			For delicate, washable textiles, e.g. made of silk, satin, synthetic fibres or blended fabrics	Quick , Less Iron , Water Plus , Rinse Plus , Prewash gentle spin between the rinse cycles only
Wool	* - 40	2,0	Hand or machine washable wool or rich-wool textiles	particularly gentle wash programme to prevent shrinkage of laundry, longer breaks during the programme (fabrics rest in the detergent solution)
Super 15			Easy-Care textiles made of cotton, linen, synthetic fibres or blended fabrics	Rinse Plus , short programme, approx. 15 minutes, suitable for lightly soiled laundry
Fluff Clean	* , 40, 90	0	Drum clean programme. 90° = antibacterial programme, pour no detergent; 40° = antibacterial programme for use with special washing machine cleaning detergent; * = fluff rinsing programme to remove fluff accumulated in the tub during tumble drying	
Rinse/Spin		7,0	For hand-washed items; Rinse Plus button activated. If only using the spin cycle, deactivate the button.	Less Iron , Water Plus , Rinse Plus
Empty			Odour removal and wrinkle reduction program, suitable for refreshing business suits, jackets and trousers, or dry-clean items that cannot be washed in the washing machine; also suitable for refreshing casual wears made of cotton or artificial fabrics.	
Refresh		1,0	Easy care textiles, dry at low heat setting	Recommend to remove the laundry immediately at the end of program and hang up for 3 to 5 mins for better result.
Intensive Dry		4,0	Cotton/coloureds textiles, dry at normal heat setting	
Low Heat Dry		2,5	Easy care textiles, dry at low heat setting	

i The programmes are time-controlled for lightly soiled textiles. If textiles are heavily soiled, reduce the load and select additional function, e.g. **Intensive**.

* Max. load according to EN50229. Values in blue: Max load for drying; Values in black: Max load for washing.

** Additional function >> **Quick** and **Intensive** cannot be selected in the same time.

If washing and drying without interruption is desired. The subsequent auto dry programme for **Cottons**, **Cottons Eco** and **Shirts/Business** is **Intensive Dry**, for **Easy-Care** and **Mix** is **Low Heat Dry**.

For further information and a selection of our products go to our web site: <http://www.siemens-home.com> or contact our customer service centres

Siemens Electrogeräte GmbH
Carl-Wery-Str.34
D-81739 Munich/Germany

WD14H421EU

9000892134
0393

Drying table

Cottons/Coloureds (textiles made of cotton or linen such as underwear, T-shirts, sweaters, trousers, kitchen towels)

Dry weight in kg		0,5~1,0	1,0~2,0	2,0~3,0	3,0~4,0	~0,5	~1,0	~2,0	~2,5
		Estimated drying time in minutes				Selectable drying time in minutes			
Cupboard dry	Rule 1	< 60	60~80	80~110	110~150	30	60	90	120
	Rule 2	< 65	65~90	90~130	130~160				
Recommended programme		Intensive Dry (auto)				Intensive Dry (time)			

Quilt/Terry towel (big or thick textiles made of cotton such as terry towels, bed sheets, table cloths, jeans, workwear)

Dry weight in kg		0,5~1,0	1,0~2,0	2,0~3,0	3,0~4,0	~0,5	~1,0	~1,5	~2,0
		Estimated drying time in minutes				Selectable drying time in minutes			
Cupboard dry	Rule 1	< 60	60~90	90~120	120~160	30	60	90	120
	Rule 2	< 80	80~110	110~140	140~170				
Recommended programme		Intensive Dry (auto)				Intensive Dry (time)			

Easy-Care (textiles made of synthetic or mixed fibres such as shirts, sportswear, delicate garments)

Dry weight in kg		0,5~1,0	1,0~2,0	2,0~2,5		~0,5	~1,0	~1,5	~2,0
		Estimated drying time in minutes				Selectable drying time in minutes			
Cupboard dry	Rule 1	< 50	50~100	100~120		30	60	90	120
	Rule 2	< 60	60~110	110~130					
Recommended programme		Low Heat Dry (auto)				Low Heat Dry (time)			

Times are approximate and refer to standard load, spin programme and environment temperature.
 The maximum selectable drying time (time dry) is 120 minutes, if the load of the laundry to be dried is more than 2.5 kg, please select auto dry function. Auto dry is recommended to achieve good drying result and save energy. 15 minutes time dry programme is for cooling down the laundry.

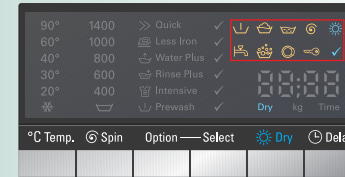
Consumption values

Programme	Option	Load	Electricity consumption**	Water***	Programme duration***
Cottons 30 °C**	☑ Intensive	7 kg	0,49 kWh	74 l	2:18 h
Cottons 40 °C**	☑ Intensive	7 kg	0,57 kWh	74 l	2:18 h
Cottons Eco 60 °C**	☑ Intensive	7 kg	1,19 kWh	51 l	2:31 h
Cottons 90 °C	-	7 kg	2,10 kWh	84 l	2:15 h
Easy-Care 40 °C**	☑ Intensive	3,5 kg	0,59 kWh	55 l	1:43 h
Mix 40 °C**	-	3,5 kg	0,54 kWh	52 l	1:03 h
Delicate/Silk 30 °C	-	2 kg	0,15 kWh	29 l	0:39 h
Wool ❄️ (cold)	-	2 kg	0,08 kWh	42 l	0:36 h
Wool 30 °C	-	2 kg	0,16 kWh	42 l	0:36 h
Intensive Dry	-	4 kg	2,55 kWh	3 l	2:30 h
Low Heat Dry	-	2,5 kg	1,55 kWh	3 l	2:00 h
Fluff Clean ❄️ (cold)	-	-	0,04 kWh	29 l	0:16 h
Cottons Eco 60 °C + Intensive Dry (2 cycles)*	☑ Intensive*	7/3,5 kg	5,67 kWh	57 l	6:58 h

* Programme setting for testing and energy labelling in accordance with EN50229, EU directive 96/60/EC.
 ** Programme setting for testing according to valid version of EN60456.
 Note for comparative testing: to test using the test programmes, wash using the specified load amount and maximum spin speed. Select the **Mix 40 °C** programme and maximum spin speed as the short programme for coloureds.
 *** The values deviate from the indicated values depending on water pressure, hardness, and inlet temperature, ambiente temperature, type, amount and soiling of the laundry, detergent used, fluctuations in the power supply and selected additional functions.

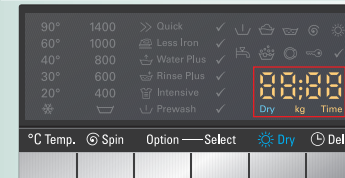
Display and Option buttons

Display symbols



- ☑ **Prewash:** On if prewash process is running.
- ☑ **Washing:** On if wash process is running.
- ☑ **Rinse:** On if rinse process is running.
- ☑ **Spin:** On if spin process is active.
- ☑ **Drying:** On if drying process is active.
☑: On if drying programme is selected.
- ☑ **Tap is: Flashing On** if tap not open or no water supply. if low water pressure. This will extend the programme.
- ☑ **Overdosage:** Foam detected. Maybe too much detergent.
- ☑ **Door:** On if door can be opened.
- ☑ **Childproof lock: On Flashing** if childproof lock is activated. if there is misoperation. Activate/deactivate childproof lock. →Page 10

Display information



- kg, 7.0*: maximum load recommendation in kg for selected washing/drying programme. →Page 7, **Programme overview**
- Time, e.g. 1:30*: programme remaining time, or 2:45*: Finish in time defined by user. →Page 9
- Dry, drying mode and drying time:**
 Rule 1: Auto dry mode 1.
 Rule 2: Auto dry mode 2, extra dry for drying programme.
 OFF: Drying programme is off.
 1:20*: Time dry for solo drying programme, drying time defined manually. →Page 9, ☑ **Dry** button
- PAUSE: On if programme is in pause.
- OPEN: On if door can be opened when programme was paused.
- 0 -: End of programme, or
- - - -: End of programme with the ☑ setting.
 ☑: Set volume of signals. →Page 10
 ☑: Set additional rinse cycles. →Page 10
 ☑: 18*: Information on the display. →Page 11

Alternating display of drying status (Auto dry mode/Time dry duration/OFF)**, maximum load recommendation in kg and remain time or finish in time display.

* Example of display, may vary depending on selections.
 **Only when the drying programme is available.

Option buttons

You can change the spin speed and temperature even while the selected programme is running. The effects depend on the progress of the programme.

°C Temp.

You can change the indicated washing temperature. The maximum washing temperature which can be selected depends on the programme that has been chosen. →Page 7

☑ Spin

You can change the indicated spin speed. The maximum spin speed which can be selected depends on the chosen programme. If ☑ is selected, the load is held in the rinsing water.

☑ Dry

You can activate, deactivate and set the drying function by touching this option button. Mode of washing and drying without interruption is auto dry only; when single drying programme is selected, you can choose auto dry, or time dry with desired drying time. →Page 8

☑ Delay

When you select a programme, the respective programme duration is displayed. You can delay the start of the programme before it begins. The finish-in time indicates when the programme will be finished. It can be set in hour increments up to a maximum of 24 h. Press and hold the ☑ **Delay** button until the required number of hours is shown (h=hour). Select ☑ **Start/Reload**, the door is locked.

Additional functions and Individual settings

Additional functions

See also **Programme overview** → Page 7

Select the desired additional functions with the **Option** button and then activate (or deactivate) the chosen function with the **Select** button, e.g. select the **Intensive** function:

- For **Cottons Eco** programme, touch **Option** button, **Less Iron** indicator flashes.
- Touch **Option** button again until **Intensive** indicator flashes.
- Touch **Select** button. **Intensive** indicator flashes and related **✓** indicator comes on. It means the function has been preselected. If you need to deselect the function immediately, touch the **Select** button again.
- If no other action, the **Intensive** indicator stops flashing and comes on after several seconds. Additional function is selected successfully. Setting of **Rinse Plus**. → Page 10

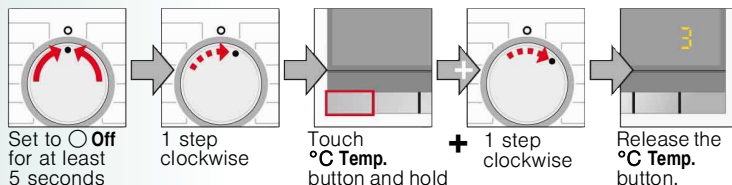
» Quick	Shorten the washing time. For slightly soiled items.
Less Iron	Special spin sequence with subsequent fluffing. Gentle final spin – residual moisture in the laundry increased slightly.
Water Plus	High water level to achieve better rinse result. Additional rinse cycles, extended washing time. For areas with very soft water or for further improvement of the rinsing result. Select Rinse Plus by Option button. Then touch Select to activate the function and touch Select button for desired rinse cycles (max. 3 cycles).
Rinse Plus	
Intensive	Extends the washing time for a more intensive washing of heavily soiled items.
Prewash	For heavily soiled laundry. Prewash at max. 30 °C.

Start/Reload

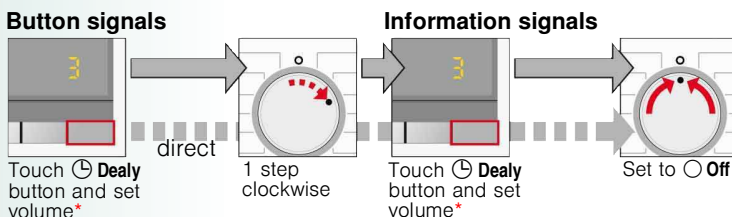
For starting or pausing the washing/drying programme.

Signal volume (for button signal and information signal)

1. Activate setting mode for signal volume



2. Set volume for ...



*If required, set repeatedly.

Childproof lock

Programme will not be changed by accidental operation.

To activate the childproof lock:

- After the programme starts or finish in time is activated → Page 9, press and hold the **Dealy** button for 5 seconds;
 - Release when the symbol lights up. If button signal is on, an acoustic signal will be heard.
- When the programme ends, the **Start/Reload** indicator remains on to remind you to deactivate the childproof lock.

To deactivate the childproof lock:

- Touch the **Dealy** button until the symbol turns off.
- Release the button.

symbol flashes if the programme has been changed while childproof lock is activated. If the childproof lock is deactivated while the programme selector is in a different position from when the childproof lock was activated, the running programme will be halted.

Information on the display

	Please close the door immediately because of rising water level. In pause status and are displayed alternately.	
	Door is locked due to safety reasons (water level and/or temperature are too high). For washing programme : In pause status, and are displayed alternately. If you need to open the door, wait for the temperature to drop or drain the water (e.g. select or programme). For drying programme : If you need to open the door, wait for the temperature to drop or set 15 minutes time dry programme to cool down the laundry. If comes up after the drying programme ends frequently: <ul style="list-style-type: none"> – Clean the cool air inlet filter. → <i>Installation and maintenance instructions, Page 9</i> – Run the Fluff Clean (cold) programme without laundry. 	
	Door cannot be locked/unlocked due to high temperature of the door lock. Keep the machine switched on for about 1 minute. Then the machine can be locked/unlocked again.	
	Door cannot be opened due to the high temperature after the drying programme. The cooling down process will continue until this display disappears and the door can be opened.	
	Flashing (no water supply): Tap turned on? Inlet filter blocked? Clean filter → <i>Installation and maintenance instructions, Page 8</i> Supply hose kinked or blocked?	On (low water pressure): Only information. No influence on the programme process. The programme duration will be prolonged.
	Clean drain pump → <i>Installation and maintenance instructions, Page 8</i> ; outlet pipe/drainage hose blocked.	
	Hold the Dry button for 3 seconds to clear this display. – Clean the cool air inlet filter. → <i>Installation and maintenance instructions, Page 9</i> – Run the Fluff Clean (cold) programme without laundry.	
other displays	Switch off the appliance, wait 5 seconds and switch it back on. If the display appears again, call the customer service.	



Safety instructions

- Read and follow the operating and Installation and maintenance instructions and all other information enclosed with the washer dryer.
- Retain documents for subsequent use.

- Risk of electric shock**
 - Never pull out the mains plug by tugging the power cord.
 - Never insert/pull out the mains plug with damp hands.
- Risk of death**
 - For worn-out appliances:
 - Pull out the mains plug.
 - Sever the power cord and discard together with the plug.
 - Destroy the lock on the washer dryer door. This will prevent children from locking themselves in and risking their lives.
- Risk of suffocation**
 - Keep packaging, plastic film and packaging parts out of the reach of children.
- Risk of poisoning**
 - Keep detergents and care products out of the reach of children.
- Risk of explosion**
 - Items of laundry pretreated with cleaning agents containing solvents, e.g. stain remover/cleaning solvents may lead to an explosion after being loaded into the washer dryer.
 - First rinse items of laundry thoroughly by hand.
- Risk of injury**
 - Washer dryer door may become very hot.
 - Take care when draining hot detergent solution.
 - Do not climb onto the washer dryer.
 - Do not lean on the open washer dryer door.
 - Do not touch the drum in case it is still spinning.
 - Ensure that the pump cap is screwed on while the machine is running to prevent the escape of water and contact with moving pump parts.
 - If a drying programme was interrupted, the washer dryer and the laundry may be very hot, select **Intensive Dry** or **Low Heat Dry** and set 15 minutes programme to cool down the laundry, then remove the laundry.

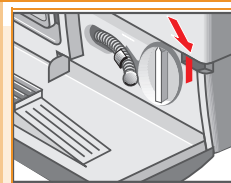
What to do if ...

- Water is leaking out.
 - Fit/refit drainage hose correctly.
 - Tighten the screw connection of the supply hose.
- No water supply. Detergent not dispensed.
 - **Start**/reload not selected?
 - Tap not turned on?
 - Filter blocked? Clean the filter. → *Installation and maintenance instructions, Page 8*
 - Supply hose kinked or trapped?
- Washer dryer door cannot be opened.
 - Safety function active. Programme stopped? → *Page 5*
 - (no final spin/drain) selected? → *Page 5*
 - Can be opened by emergency release only. → *Page 13*
- Programme does not start.
 - **Start**/reload or **Dealy** selected?
 - Washer dryer door closed properly?
- Detergent solution is not drained.
 - Clean the drain pump. → *Installation and maintenance instructions, Page 8*
 - Clean waste pipe and/or drainage hose.
- Water not visible in the drum.
 - Not a fault – water below the visible area.
- Spin result not satisfactory.
 - Wash small and large items of laundry together.
 - **Less Iron** selected? → *Page 10*
 - Speed selected too low? → *Page 9*
- Spin cycle performed several times.
 - Not a fault – unbalanced load detection system adjusts the imbalance.
- Compartment not rinsed out completely.
 - Remove the insert. Clean detergent drawer and insert it again. → *Installation and maintenance instructions, Page 7*
- Odour formation in the washer dryer.
 - Run the **Fluff Clean 90°C** programme without laundry.
 - Use standard detergents.
- Foam escapes from the detergent drawer.
 - Too much detergent used?
Mix 1 tablespoon of fabric softener with ½ litre of water and pour into compartment II in the detergent drawer.
 - Reduce detergent dosage for the next wash cycle.
 - Use commercially available low foam detergents and care products which are suitable for use in washer dryer.
- Excessive noise, vibrations and “wandering” during spin cycle.
 - Are the appliance feet fixed?
Secure the appliance feet. → *Installation and maintenance instructions, Page 5*
 - Transport bolts removed?
Remove transport bolts. → *Installation and maintenance instructions, Page 3*
- Display panel/indicator lamps do not function while the appliance is running.
 - Power failure?
 - Circuit breaker tripped? Reset the circuit breaker/change the fuse.
 - If the fault occurs repeatedly, call the customer service.
- Programme sequence longer than usual.
 - Not a fault – unbalanced load detection system adjusts imbalance by repeatedly distributing the laundry.
 - Not a fault – foam detection system active – adds an additional rinse cycle.
- Detergent residues on the laundry.
 - Occasionally, phosphate-free detergents contain water-insoluble residues.
 - Select **Rinse**/Spin or brush off residues when the laundry is dry.
- Spinning noise during drying.
 - This is an innovative process called thermospinning to reduce energy consumption during drying.
- Differently coloured fluff from the previous drying cycle is redeposited on the laundry in the following washing cycle.
 - Run the **Fluff Clean** (cold) programme without laundry inside to remove fluff accumulated in the tub during tumble drying.
- Water inlet noise during drying, Water tap symbol is flashing during drying.
 - The machine includes a self cleaning function to remove fluff that is released from laundry during drying. This is done with help of a small amount of tap water. Open the water tap also during drying.

What to do if ...

- Drying duration extended.
 - According to the air cooling principle, higher environment temperature will result in poor drying performance, so the drying duration will be extended. Ensure a good ventilation to remove exhaust heat.
 - Cooling air inlet filter blocked? → *Installation and maintenance instructions, Page 9: Clean the air inlet filter*
 - Run the **Fluff Clean** (cold) programme without laundry to remove fluff accumulated in the tub and drying system.
- Drying programme does not start.
 - Drying programme not selected? → *Page 9: Dry option button and Page 7: Programme overview*
 - Loading door not closed properly?
 - Pump is blocked. → *Installation and maintenance instructions, Page 8: Clean the pump*
- The drying result is not satisfactory (laundry is not dry enough).
 - Too high environmental temperature (above 30 °C) or bad ventilation of the room, where the washer dryer is placed – ensure good ventilation to remove exhaust heat.
 - The laundry has not been spun well enough before drying – always set the highest selectable spin speed for all washing programmes.
 - Machine overload: please follow the load recommendation in the programme table and load display, do not overload machine, because of maximum load amount for drying is lower than for washing – unload the machine after washing with maximum load for washing and separate the load into two drying cycles.
 - The line voltage of the power supply is too low (below 200 V) – ensure suitable power supply.
 - Cooling air inlet filter blocked? → *Installation and maintenance instructions, Page 9: Clean the air inlet filter*
 - Thick multilayered textiles or textiles with thick fillings – these textiles easily dry on the surface, but not inside. This equalization process may take longer. Please use time drying programs to completely dry these kinds of textiles.
- A small amount of water is observed dripping on the dried laundry load when the door is opened.
 - Drying time is shortened with a small load. Some residual moisture may remain in the drying system. Opening the door quickly creates a suction effect which pulls moisture from the drying system.
 - Open the door slowly. Avoid jerking the door open.
- If you cannot correct a fault yourself or a repair is required:
 - Turn the programme selector to **Off** and pull the mains plug out of the socket.
 - Turn off the tap and call customer service.

Emergency release e.g. in the event of power failure



The programme will continue to run when the power is restored. However, if the laundry has to be removed, the washing machine door can be opened as follows:



Risk of scalding.
The detergent solution and laundry may be hot.
If possible, leave it to cool down.
Do not open the washer dryer door if water can be seen through the glass.

- Set the programme selector to **Off** and disconnect the mains plug.
- Drain the detergent solution. → *Installation and maintenance instructions, Page 8*
- Pull the emergency release with a tool and release.
The washer dryer door can then be opened.



Follow the safety instructions on Page 11.



Washer dryer

Operating instructions

en

WD14H421EU



Read these instructions before switching on the washer dryer. Also follow the separate Installation and maintenance instructions.

SIEMENS