

Your washing machine

Congratulations – You have opted for a modern, high-quality domestic appliance manufactured by Siemens. The washing machine is distinguished by its economical consumption of water and energy. Each appliance which leaves our factory is inspected thoroughly to ensure that it functions properly and is in perfect condition.

For further information and a selection of our products go to our web site: www.siemens-home.com

You can find the contact details for your nearest after-sales service here or in the after-sales service directory (*depending on model*), see also Installation Instructions, *page 7*.

- **GB** 0844 8928999 Calls from a BT landline will be charged at up to 3 pence per minute. A call set-up fee of up to 6 pence may apply.
- **IE** 01450 2655

Environmentally friendly waste disposal

All packaging must be disposed of in accordance with environmental guidelines.

This appliance is certified in accordance with European Directive 2002/96/EC on waste electrical and electronic equipment (WEEE). This directive provides the framework for the EU-wide collection and reuse of used appliances.

Contents

	Page
Intended use	1
Programmes	1
Setting and adjusting the programme	3
Washing	3/4
After washing	4
Individual settings	5/6
Information on the display panel	6
Programme overview	7
Safety instructions	8
Consumption values	8
Important information	9
Insert for liquid detergent	9
Cleaning and care	9/10
Maintenance	10
What to do if ...	11

Environmental protection/Conservation tips

- Always fill the washing machine with a maximum amount of laundry for the particular programme.
- Wash normally soiled laundry without a prewash.
- Instead of **Cottons 90 °C**, select the programme **Cottons 60 °C** and additional function **eco Perfect**. Comparable cleaning result with significantly lower energy consumption.
- Measure the detergent according to the manufacturer's instructions and water hardness.
- If the laundry is subsequently dried in a tumble drier, select the spin speed according to the tumble drier manufacturer's instructions.

Intended use

- For use in the household only
- For machine-washable fabrics and hand-washable wool in detergent solution,
- To be operated with cold drinking water and commercially available detergents and care products which are suitable for use in washing machines
- The washing machine may be used by children over the age of 8 years old and by persons with reduced physical, sensory or mental capacity or by persons with a lack of experience or knowledge **if they are supervised or have been instructed** by a responsible person.

- Do not leave children unattended near the washing machine
- Children must not be allowed to play with the appliance.
- Children may not carry out any cleaning or maintenance work unless under supervision.
- Keep pets away from the washing machine.

Programmes

Detailed programme overview → *page 7*.
Temperature and spin speed can be selected individually, depending on the selected programme and programme progress.

Cottons	Hard-wearing fabrics
+ Prewash	Hard-wearing fabrics, prewash at 30 °C
Eco	Energy saving programme for hard-wearing textiles
+ Prewash	Easy-care fabrics, prewash at 30 °C
Synthetics	Easy-care fabrics
+ Prewash	Easy-care fabrics, prewash at 30 °C
Mix	Different types of laundry
Delicate/Silk	Delicate washable fabrics
Wool	Hand/machine-washable wool
Rinse	Extra rinse with spin
Spin/Empty	Extra spin with selectable spin speed or Rinse only; the rinsing water when " (Rinse hold = without final spin) is actuated; set ⊙ (spin speed) to "–"
Super quick 30 min	Short programme
Super quick 15 min	Short programme
Hygiene	Hard-wearing fabrics
Shirts	Non-iron shirts
Jeans	Dark-coloured fabrics

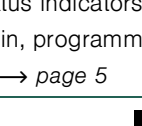
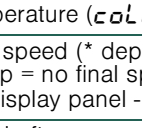
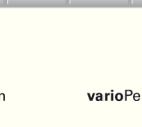
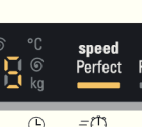
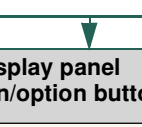
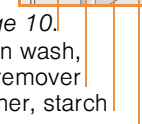
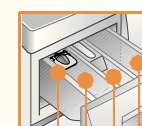
Preparation

Correct installation according to the separate installation instructions.

Checking the machine
– Never use a damaged machine.
– Inform the after-sales service.

Connecting the mains plug
– Make sure your hands are dry.
– Take hold of the plug only.

Turning the tap on



Sorting and loading laundry
Follow the manufacturer's care information. According to the information on the care labels. According to type, colour, soiling and temperature. Do not exceed the maximum load → *page 7*.

Adding detergent and care products
Measure accordingly: Amount of laundry, level of soiling, water hardness (ask your water supply company) and manufacturer's instructions. Models without insert for liquid detergent: Pour liquid detergent into the appropriate dispenser and place in the drum.
During operation: Open the detergent drawer with care.

Setting and adjusting programmes**

Compartment II: detergent for main wash, water softener, bleach, stain remover
Compartment ⌘: fabric softener, starch
Compartment I: detergent for prewash

Insert for liquid detergent (depending on model), page 10.

****If the symbol flashes on the display panel, the childproof lock is active → Deactivating, page 5.**

Function and option buttons → Individual settings, *page 5*.

Programme selector for switching the machine on and off and for selecting the programme. Can be turned in either direction.

Select Start/Pause

Before washing for the first time
Run a wash cycle without any laundry → *page 9*

Washing

Switching off
Turn the programme selector to **Off**.

Turning the tap off
Not required for Aqua-Stop models → *Installation instructions, page 7*.

Removing the laundry
Open the washing machine door and remove the laundry. If --- (Rinse stop = no final spin) is active: Turn the programme selector to ⊙ Spin/Empty or select a spin speed. Press **Start/Pause**.
– Remove any foreign objects - risk of rusting.
– Leave the washing machine door and detergent drawer open so that any residual water can evaporate.

End of programme when...
... **End** appears on the display panel.

Interrupting the programme
Programmes at high temperatures:
– To cool the laundry: Select **Rinse**.
– Press **Start/Pause**.
Programmes at lower temperatures:
– Select **Spin/Empty** or ⊙ Spin/Empty (if only emptying: set ⊙ (spin speed) to ---).
– Press **Start/Pause**.

Changing the programme, if...
... a wrong programme has been selected by mistake:
– Reselect the programme.
– Press **Start/Pause**. The new programme starts from the beginning.

Pausing/continuing the programme...
... e.g. for soaking → *page 9*.
Press **Start/Pause**. - **P**- appears on the display panel; washing machine door cannot be opened. To continue the programme, press **Start/Pause**.

Washing

Washing

Washing

Washing

Washing

Washing

Washing

Washing

Washing

Washing

Washing

Washing

Washing

Individual settings

Function buttons
The spin speed and temperature can be changed before and during the selected programme. The effects depend on the programme progress.
°C (Temp.)
You can change the displayed washing temperature. The maximum washing temperature that can be selected depends on the programme that has been set.
⊙ (spin speed // --- (Rinse stop = no final spin))
You can change the spin speed shown or select --- (Rinse stop = no final spin, laundry remains in the water after the last rinse, display panel ---). The maximum selectable spin speed depends on the model and on which programme is currently selected.
⌚ (Finished in)
When you select the programme, the relevant programme duration is displayed. You can delay the start of the programme before it begins. The "Finished in" time can be set in increments of one hour up to a maximum of 24 hours. Press the ⊙ (Finished in) button repeatedly until the required number of hours is displayed (h = hour). Press **Start/Pause**.

Option buttons → Programme overview, *page 7*

⌚ speed Perfect For washing in a shorter time with a washing result comparable to that of the standard programme. Maximum load → Programme overview, *page 7*.

⊙ eco Perfect For saving energy with a comparable washing effect to the standard programme.

⌚ Extra Rinse Additional rinse cycle. For areas with very soft water or for further enhancing the spin result.

Childproof lock
on the display panel
You can lock the washing machine to prevent the functions you have set from being changed inadvertently.
ON/OFF: after the start/end of the programme, press and hold the Start/Pause button for approx. 5 seconds.
Note: The childproof lock can remain activated until you wish to start the next programme, even after switching off the machine. Then you can deactivate the childproof lock before starting the programme and activate it again as necessary once the programme has started.

Start/ Pause
To start, pause and continue the programme and to activate/deactivate the childproof lock.

Signal
1. Activate the setting mode for the signal volume
To activate the setting mode
set to ● press and hold + turn one position to the right press and hold for a further 5 secs until the display elements light up; setting mode is activated

2. a) Set the volume for **button signals (depending on model)**
press repeatedly until the desired volume is reached or set to ● to exit the setting mode for the signal volume

2. b) Set the volume for **information signals**
turn one position to the right press repeatedly until the desired volume is reached set to ● to exit the setting mode for the signal volume

Information on the display panel *depending on model*

E: 17 Turn the (cold water) tap on fully; supply hose kinked/trapped; water pressure too low; service, clean the filter → *page 10*.

E: 18 Detergent solution pump blocked; service, clean the detergent solution pump → *page 10*.
Drainage hose/waste pipe blocked; service, clean the drainage hose at the siphon → *page 10*.

E: 23 Water in the base tub, appliance leaking. Turn off the tap. Call the after-sales service.

Other displays Childproof lock active; Deactivating → *page 5*.
Switch off the appliance, wait for 5 seconds and switch it back on again. If the display appears again, call the after-sales service.

Individual settings

Signal
1. Activate the setting mode for the signal volume
To activate the setting mode
set to ● press and hold + turn one position to the right press and hold for a further 5 secs until the display elements light up; setting mode is activated

2. a) Set the volume for **button signals (depending on model)**
press repeatedly until the desired volume is reached or set to ● to exit the setting mode for the signal volume

2. b) Set the volume for **information signals**
turn one position to the right press repeatedly until the desired volume is reached set to ● to exit the setting mode for the signal volume

Information on the display panel *depending on model*

E: 17 Turn the (cold water) tap on fully; supply hose kinked/trapped; water pressure too low; service, clean the filter → *page 10*.

E: 18 Detergent solution pump blocked; service, clean the detergent solution pump → *page 10*.
Drainage hose/waste pipe blocked; service, clean the drainage hose at the siphon → *page 10*.

E: 23 Water in the base tub, appliance leaking. Turn off the tap. Call the after-sales service.

Other displays Childproof lock active; Deactivating → *page 5*.
Switch off the appliance, wait for 5 seconds and switch it back on again. If the display appears again, call the after-sales service.

Programmes	°C	max.	Type of laundry	Options; information
Cottons + Prewash	c o L d' -90 °C c o L d' -60 °C	6 kg/ 3,5 kg*	Hard-wearing fabrics, heat-resistant fabrics made of cotton or linen	speed Perfect*, Extra Rinse, eco Perfect
Hygiene + Prewash	c o L d' -60 °C c o L d' -40 °C	6 kg/ 3,5 kg*	Easy-care fabrics made of cotton and dark easy-care fabrics	speed Perfect, Extra Rinse, eco Perfect
Synthetics + Prewash	c o L d' -60 °C c o L d' -40 °C	3 kg	Easy-care fabrics made of cotton, linen, synthetic fibres or blended fabrics	speed Perfect, Extra Rinse, eco Perfect, different types of laundry can be washed together
Mix	c o L d' -40 °C	2,5 kg	Fabrics made of cotton or easy-care fabrics	speed Perfect, Extra Rinse, eco Perfect
Jeans	c o L d' -40 °C	3 kg	Dark-coloured fabrics made of cotton and dark easy-care fabrics	speed Perfect, Extra Rinse, eco Perfect, reduced rinse and final spin cycle
Shirts	c o L d' -60 °C	2 kg	Non-iron shirts made of cotton, linen, synthetic or blended fabrics	speed Perfect, Extra Rinse, eco Perfect
Delicate/Silk	c o L d' -40 °C	2 kg	For delicate, washable fabrics, e.g. made of silk, satin, synthetic fibres or blended fabrics (e.g. curtains)	speed Perfect, Extra Rinse, eco Perfect
Wool	c o L d' -40 °C	2 kg	Hand or machine-washable fabrics made of wool or containing wool	speed Perfect, Extra Rinse, eco Perfect
Super quick 30min Super quick 15min	c o L d' -40 °C c o L d' -40 °C	3,5 kg 2 kg	Easy-care fabrics made of cotton, linen, synthetic fibres or blended fabrics	speed Perfect, Extra Rinse, eco Perfect, suitable for lightly soiled items
Additional programmes	reduced load when using the speed Perfect option. i Programmes without prewash - add detergent to compartment II, programmes with prewash - distribute the detergent between compartments I and II 4	9301 / 9000840415	WMD8B260IN	Siemens-Electrogeräte GmbH Carl-Wery-Str. 34 81739 München / Deutschland

Safety instructions

- Read the instruction manual and installation instructions and all other information enclosed with the washing machine and act accordingly.
- Retain the documents for subsequent use.

Risk of electric shock

- Never pull the cable to disconnect the mains plug.
- Only plug in or disconnect the mains plug if your hands are dry.

Danger to life

For worn-out appliances:

- Disconnect the mains plug.
- Sever the mains cable and discard along with the plug.
- Destroy the lock on the washing machine door. This will prevent children from locking themselves in and risking their lives.

Danger of suffocation

- Keep packaging, film and packaging parts out of the reach of children.

Risk of poisoning

- Keep detergents and care products out of the reach of children.

Risk of explosion

- Items of laundry pretreated with cleaning agents containing solvents, e.g. stain remover/cleaning solvent may cause an explosion after being loaded into the washing machine. Rinse items of laundry thoroughly by hand beforehand.

Risk of injury

- The washing machine door can become very hot.
- Be careful when draining hot detergent solution.
- Do not climb onto the washing machine.
- Do not lean on the open washing machine door.
- Do not reach into the drum if it is still rotating.

Consumption values

Programme	Load	Electricity***	Water***	Programme duration***
Cottons 20 °C	6 kg	0.30 kWh	68 l	2 ¼ h
Cottons 40 °C*	6 kg	0.95 kWh	68 l	2 ¼ h
Cottons 60 °C	6 kg	1.60 kWh	68 l	2 ¼ h
Cottons 90 °C	6 kg	2.45 kWh	76 l	2 ½ h
Synthetics 40 °C*	3 kg	0.70 kWh	53 l	1 ¾ h
Mix 30 °C	2.5 kg	0.40 kWh	44 l	1 h
Delicate/Silk 30 °C	2 kg	0.30 kWh	37 l	¾ h
Wool @30 °C	2 kg	0.20 kWh	43 l	¾ h

*Programme setting for testing in accordance with currently applicable EN60456 standard. Note on comparative tests: When testing the test programmes, wash the specified load using the maximum spin speed.

Programme	Additional function	Load	Annual energy consumption	Annual water consumption
Cottons 40/60 °C	eco Perfect**	6/3 kg	196 kWh	10800 l

** Programme settings for testing and energy labelling in accordance with european standard 60456 Ed5 with cold water (15 °C).

***The values may deviate from the specified values depending on water pressure, water hardness, and inlet temperature, ambient temperature, type, amount and level of laundry soiling, detergent used, fluctuations in the power supply and selection of options.

Important information

Before washing for the first time

Do not put any laundry in the machine. Turn the tap on. Pour into compartment II:

- approx. 1 litre water
- detergent (dosage according to the manufacturer's instructions for light soiling and the appropriate degree of water hardness)

Turn the programme selector to Synthetics 60 °C and press **Start/Pause** . At the end of the programme, turn the programme selector to **Off**.

Protecting the laundry and the machine

- When measuring the amount of all detergents/additives and cleaning agents, always check the manufacturer's instructions.
- Empty pockets.
- Look out for metal items (paperclips, etc.).
- Wash delicates in a laundry bag (tights, curtains, underwired bras).
- Fasten zips, do up any buttons.
- Brush sand out of pockets and collars.
- Remove curtain fittings or place in the laundry bag.

Loading laundry

Load items of laundry of varying sizes. Take care not to trap items of laundry between the washing machine door and the rubber seal.

Laundry with varying degrees of soiling

Wash new items of clothing separately.

light	Do not prewash. If required, select the speed Perfect option.
	Pretreat any stains as necessary.
heavy	Do not load as much laundry. Select the programme with prewash.

Soaking *Load laundry of the same colour*

Pour soaking agent/detergent into compartment II in accordance with the manufacturer's instructions. Turn the programme selector to Cottons 30 °C and press **Start/Pause** . After approx. 10 minutes, press **Start/Pause** to stop the programme. Once the required soaking time has elapsed, press **Start/Pause** again to continue the programme or to select a different programme.

Starching *Laundry must not be treated with fabric softener*

Starching is possible in all wash programmes if liquid starch is used. Pour starch into the fabric softener compartment in accordance with the manufacturer's instructions (rinse first if necessary).

Dyeing/bleaching

Dye should only be used in normal household quantities. Salt may damage stainless steel. Always follow the dye manufacturer's instructions. Do **not** use the washing machine for bleaching clothes.

Insert for liquid detergent


depending on model

Position the insert for dispensing liquid detergent:

- Remove the detergent drawer completely → page 10.
- Slide the insert forwards.

Do not use the insert (slide upwards):

- For gel-type detergents and washing powder,
- for programmes with Prewash (Vorwäsche) or the (Finished in) function.



Cleaning and care

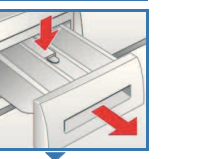
Machine housing, control panel

- Remove detergent residue immediately.
- Wipe off with a soft, damp cloth.
- Do not clean with a jet of water.

Cleaning and care

Cleaning the detergent drawer ...
... if it contains detergent or fabric softener residues.

- Pull out, press insert down, remove drawer completely.
- To remove the insert: press the insert upwards from below with your finger.
- Clean the detergent dispenser tray and insert with water and a brush and dry it.
- Attach the insert and engage (connect the cylinder to the guide pin).
- Push in the detergent drawer.



Drum

Leave the washing machine door open so that the drum can dry out. Rust stains - use chlorine-free cleaning agent, not steel wool.

Descaling *Make sure that there is no laundry in the machine.*

This should not be necessary if the correct detergent dosage has been used. If it is necessary, however, proceed according to the descaling agent manufacturer's instructions. Suitable descalers can be obtained via our website or from our after-sales service (→ page 1).

Risk of scalding


- Allow the detergent solution to cool down.
- Turn off the tap.

Maintenance

Detergent solution pump

Turn the programme selector to **Off** and disconnect the mains plug.

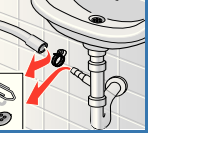
- Open the service flap
- Carefully unscrew the pump cover (residual water).
- Clean the interior, pump cover thread and pump housing (the impeller in the detergent solution pump must rotate).
- Replace the pump cover and screw it on tightly.
- Replace the service flap.



Drainage hose at the siphon is blocked

Turn the programme selector to **Off** and disconnect the mains plug.

- Loosen the hose clamp and carefully remove the drainage hose (caution: residual water).
- Clean the drainage hose and siphon connecting piece.
- Reattach the drainage hose and secure the connection with the hose clamp.

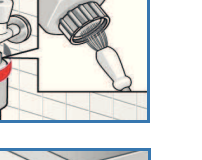


Filter in the water inlet is blocked

Risk of electric shock
Do not immerse the Aqua-Stop safety device in water (it contains an electric valve).

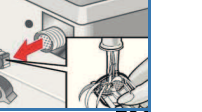
Reduce the water pressure in the supply hose:

- Turn off the tap.
- Select any programme (except for Spin / Empty).
- Press **Start/Pause** . Let the programme run for approximately 40 seconds.
- Turn the programme selector to **Off**. Disconnect the mains plug. Clean the filter:
- Disconnect the hose from the tap. Clean the filter with a small brush.



and/or on standard and Aqua-Secure models:

Remove the hose from the rear of the appliance. Take out the filter with a pair of pliers and clean it.



- Connect the hose and check for leaks.

What to do if...

Water is leaking out.	<ul style="list-style-type: none"> Attach/replace the drainage hose correctly. Tighten the screw connection of the supply hose.
No water supply. Detergent not dispensed.	<ul style="list-style-type: none"> Start/Pause not selected? Tap not turned on? Filter blocked? Clean the filter → page 10. Supply hose kinked or trapped?
Washing machine door cannot be opened.	<ul style="list-style-type: none"> Safety function active. Programme stopped? → page 4. ---- (Rinse stop = no final spin) selected? → page 3, 4.
Programme does not start.	<ul style="list-style-type: none"> Start/Pause or (Finished in) time selected? Washing machine door closed? Childproof lock active? Deactivating → page 5.
Detergent solution is not drained.	<ul style="list-style-type: none"> ---- (Rinse stop = no final spin) selected? → page 3, 4. Clean the detergent solution pump → page 10. Clean the waste pipe and/or drainage hose.
Water not visible in the drum.	Not a fault - water below the visible area.
Spin result not satisfactory. Laundry wet/too damp.	<ul style="list-style-type: none"> Not a fault - the imbalance monitoring system has interrupted the spin because the laundry is unevenly distributed. Distribute large and small items of laundry evenly in the drum. Speed selected too low? → page 5.
The programme duration changes during the wash cycle.	Not a fault - the programme cycle is optimised for the particular washing process. This can cause changes in the programme duration on the display panel.
Spin cycle performed several times.	Not a fault - unbalanced-load detection system is adjusting the imbalance.
Residual water in the compartment for care products.	<ul style="list-style-type: none"> Not a fault - the action of the care product is not affected. Clean the insert if necessary → page 10.
Odour formation in the washing machine.	Run programme Cottons 90 °C without laundry. Use standard detergent.
Status display flashing. Appliance has detected a detergent overload.	<ul style="list-style-type: none"> Too much detergent used? Mix one tablespoonful of fabric softener with ½ litre water and pour into compartment II (Not for outdoor fabrics, sportswear fabrics or those made with down.) Reduce the detergent dosage for the next wash cycle.
Loud noises, vibrations and "wandering" during the spin cycle.	<ul style="list-style-type: none"> Are the appliance feet fixed? Secure appliance feet → <i>Installation instructions</i>. Transportation safety devices removed? Remove transportation safety devices → <i>Installation instructions</i>.
Display panel/indicator lamps do not function during operation.	<ul style="list-style-type: none"> Power cut? Circuit breakers tripped? Switch the circuit breakers back on or replace. If the fault occurs repeatedly, call the after-sales service.
Programme sequence longer than usual.	<ul style="list-style-type: none"> Not a fault - unbalanced-load detection system is adjusting the imbalance by repeatedly redistributing the laundry. Not a fault - foam detection system active - adds an additional rinse cycle.
There are detergent residues on the laundry.	<ul style="list-style-type: none"> Occasionally, phosphate-free detergents contain water-insoluble residues. Select Rinse or brush down the laundry after washing.

If you cannot correct a fault yourself (switching on/off) or a repair is required:

- Turn the programme selector to **Off** and remove the mains plug from the socket.
- Turn off the water supply and call the after-sales service → *Installation instructions*.

Observe the safety instructions on page 8.



Washing machine

Instruction manual

Do not operate the washing machine until you have read these instructions and the separate installation instructions.



Your washing machine

Congratulations – You have opted for a modern, high-quality domestic appliance manufactured by Siemens. The washing machine is distinguished by its economical consumption of water and energy. Each appliance which leaves our factory is inspected thoroughly to ensure that it functions properly and is in perfect condition.

For further information and a selection of our products go to our web site: www.siemens-home.com

You can find the contact details for your nearest after-sales service here or in the after-sales service directory (*depending on model*), see also Installation Instructions, *page 7*.

- **GB** 0844 8928999 Calls from a BT landline will be charged at up to 3 pence per minute. A call set-up fee of up to 6 pence may apply.
- **IE** 01450 2655

Environmentally friendly waste disposal



All packaging must be disposed of in accordance with environmental guidelines.

This appliance is certified in accordance with European Directive 2002/96/EC on waste electrical and electronic equipment (WEEE). This directive provides the framework for the EU-wide collection and reuse of used appliances.

Contents

	Page
Intended use	1
Programmes	1
Setting and adjusting the programme	3
Washing	3/4
After washing	4
Individual settings	5/6
Information on the display panel	6
Programme overview	7
Safety instructions	8
Consumption values	8
Important information	9
Insert for liquid detergent	9
Cleaning and care	9/10
Maintenance	10
What to do if	11



Environmental protection/Conservation tips

- Always fill the washing machine with a maximum amount of laundry for the particular programme.
- Wash normally soiled laundry without a prewash.
- Instead of **Cottons 90 °C**, select the programme **Cottons 60 °C** and additional function **eco Perfect**. Comparable cleaning result with significantly lower energy consumption.
- Measure the detergent according to the manufacturer's instructions and water hardness.
- If the laundry is subsequently dried in a tumble drier, select the spin speed according to the tumble drier manufacturer's instructions.

Intended use

- For use in the household only
- For machine-washable fabrics and hand-washable wool in detergent solution,
- To be operated with cold drinking water and commercially available detergents and care products which are suitable for use in washing machines
- The washing machine may be used by children over the age of 8 years old and by persons with reduced physical, sensory or mental capacity or by persons with a lack of experience or knowledge **if they are supervised or have been instructed** by a responsible person.



- Do not leave children unattended near the washing machine
- Children must not be allowed to play with the appliance.
- Children may not carry out any cleaning or maintenance work unless under supervision.
- Keep pets away from the washing machine.

Programmes

Detailed programme overview → *page 7*.

Temperature and spin speed can be selected individually, depending on the selected programme and programme progress.

Cottons	Hard-wearing fabrics
+ Prewash	Hard-wearing fabrics, prewash at 30 °C
Eco	Energy saving programme for hard-wearing textiles
Synthetics	Easy-care fabrics
+ Prewash	Easy-care fabrics, prewash at 30 °C
Mix	Different types of laundry
Delicate/Silk	Delicate washable fabrics
Wool	Hand/machine-washable wool
Rinse	Extra rinse with spin
Spin/Empty	Extra spin with selectable spin speed or Rinse only; the rinsing water when ~ (Rinse hold = without final spin) is actuated; set (spin speed) to ~ ~ ~ ~
Super quick 30 min	Short programme
Super quick 15 min	Short programme
Hygiene	Hard-wearing fabrics
Shirts	Non-iron shirts
Jeans	Dark-coloured fabrics

Preparation



Correct installation according to the separate installation instructions.



Checking the machine

- Never use a damaged machine.
- Inform the after-sales service.



Connecting the mains plug



- Make sure your hands are dry.
- Take hold of the plug only.



Turning the tap on

Insert for liquid detergent (depending on model), *page 10*.

Compartment II: detergent for main wash, water softener, bleach, stain remover

Compartment : fabric softener, starch

Compartment I: detergent for prewash

Programme selector

Display panel Function/option buttons

cold - 90	°C (Temp.)	Select the temperature (cold = cold)
--- - 800*	(spin speed)	Select the spin speed (* depending on programme) (Rinse stop = no final spin, la... rinsing water, display panel ---)
1h - 24h	(Finished in)	Programme end after
Status indicators		Programme status indicators:
End		Wash, rinse, spin, programme duration
		Childproof lock → <i>page 5</i>

Before washing for the first time
Run a wash cycle without any laundry → page 9

Sorting and loading laundry

Follow the manufacturer's care information. According to the information on the care labels. According to type, colour, soiling and temperature. Do not exceed the maximum load → page 7.

Observe the important information → page 9.

Load items of laundry of varying sizes.

Close the washing machine door. Take care not to trap items of laundry between the washing machine door and the rubber seal.

Adding detergent and care products

Measure accordingly:

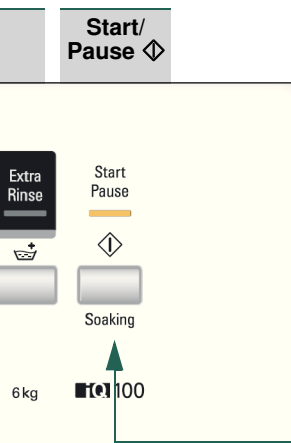
Amount of laundry, level of soiling, water hardness (ask your water supply company) and manufacturer's instructions.

Models without insert for liquid detergent: Pour liquid detergent into the appropriate dispenser and place in the drum.

During operation: Open the detergent drawer with care.

i Dilute thick fabric softener and conditioner with water. This prevents blockages.

Setting** and adjusting programmes



i **If the symbol flashes on the display panel, the childproof lock is active → Deactivating, page 5.

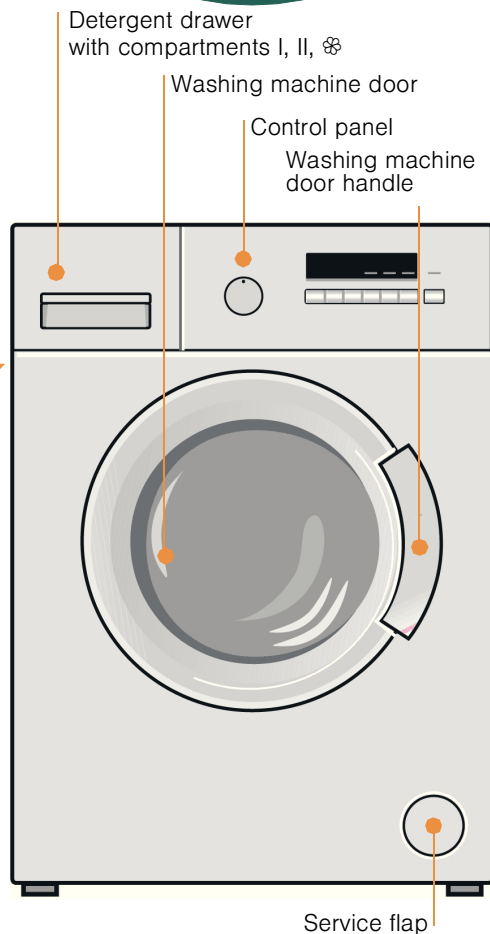
Function and option buttons → Individual settings, page 5.

i Programme selector for switching the machine on and off and for selecting the programme. Can be turned in either direction.

Select Start/Pause

i If the function buttons are held for longer, the appliance automatically runs through the display options.

Washing



Switching off

Turn the programme selector to **Off**.

Turning the tap off

Not required for Aqua-Stop models → Installation instructions, page 7.

Removing the laundry

Open the washing machine door and remove the laundry. If - - - - (Rinse stop = no final spin) is active: Turn the programme selector to Spin/**Empty** or select a spin speed.

Press **Start/Pause** .

i – Remove any foreign objects - risk of rusting.
– Leave the washing machine door and detergent drawer open so that any residual water can evaporate.

End of programme when...

... **End** appears on the display panel.

Interrupting the programme

Programmes at high temperatures:

- To cool the laundry: Select **Rinse** .
- Press **Start/Pause** .

Programmes at lower temperatures:

- Select **Spin** /Empty or Spin/**Empty** (if only emptying: set (spin speed) to - - - -).
- Press **Start/Pause** .

Changing the programme, if...

... a wrong programme has been selected by mistake:

- Reselect the programme.
- Press **Start/Pause** . The new programme starts from the beginning.

Pausing/continuing the programme...

... e.g. for soaking → page 9.

Press **Start/Pause** . - **P**- appears on the display panel; washing machine door cannot be opened. To continue the programme, press **Start/Pause** .

1

2

3

Washing

Individual settings

Function buttons

The spin speed and temperature can be changed before and during the selected programme. The effects depend on the programme progress.

°C (Temp.)

You can change the displayed washing temperature. The maximum washing temperature that can be selected depends on the programme that has been set.

⊖ (spin speed // ---- (Rinse stop = no final spin))

You can change the spin speed shown or select ---- (Rinse stop = no final spin, laundry remains in the water after the last rinse, display panel ---). The maximum selectable spin speed depends on the model and on which programme is currently selected.

⌚ (Finished in)

When you select the programme, the relevant programme duration is displayed. You can delay the start of the programme before it begins. The "Finished in" time can be set in increments of one hour up to a maximum of 24 hours. Press the ⌚ (**Finished in**) button repeatedly until the required number of hours is displayed (h = hour). Press **Start/Pause** ◊.

Option buttons → Programme overview, page 7

⌚ speed Perfect	For washing in a shorter time with a washing result comparable to that of the standard programme. Maximum load → Programme overview, page 7.
⊖ eco Perfect	For saving energy with a comparable washing effect to the standard programme.
⌚ Extra Rinse	Additional rinse cycle. For areas with very soft water or for further enhancing the spin result.

Childproof lock

You can lock the washing machine to prevent the functions you have on the display panel set from being changed inadvertently.
ON/OFF: after the start/end of the programme, press and hold the Start/Pause button for approx. 5 seconds.
 Note: The childproof lock can remain activated until you wish to start the next programme, even after switching off the machine. Then you can deactivate the childproof lock before starting the programme and activate it again as necessary once the programme has started.

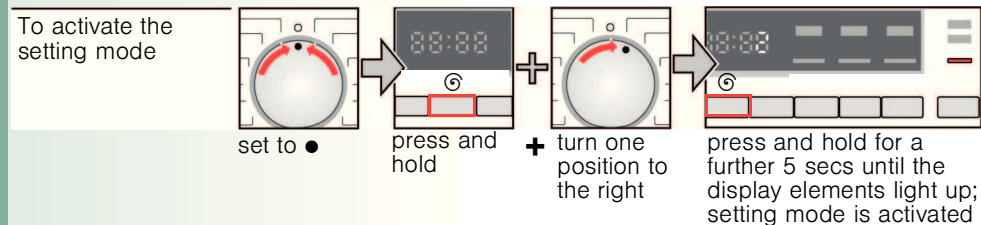
Start/ Pause ◊

To start, pause and continue the programme and to activate/deactivate the childproof lock.

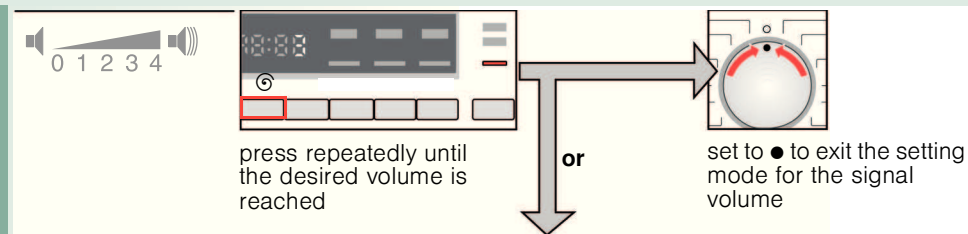
Individual settings

Signal

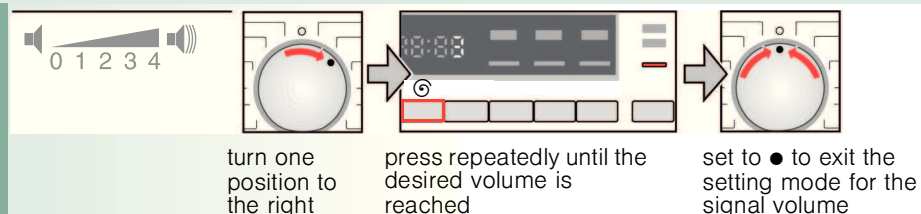
1. Activate the setting mode for the signal volume



2. a) Set the volume for **button signals (depending on model)**



2. b) Set the volume for **information signals**



Information on the display panel depending on model

E: 17	Turn the (cold water) tap on fully; supply hose kinked/trapped; water pressure too low; service, clean the filter → page 10,
E: 18	Detergent solution pump blocked; service, clean the detergent solution pump → page 10. Drainage hose/waste pipe blocked; service, clean the drainage hose at the siphon → page 10.
E: 23	Water in the base tub, appliance leaking. Turn off the tap. Call the after-sales service.
⌚	Childproof lock active; Deactivating → page 5.
Other displays	Switch off the appliance, wait for 5 seconds and switch it back on again. If the display appears again, call the after-sales service.

Programme overview

→ Refer to the table of consumption values on page 8 and the instructions on page 9.

Options; information



Type of laundry

max.

°C

Programmes	°C	max.	Type of laundry	Options; information
Cottons + Prewash	c o L d - 90 °C	6 kg/ 3,5 kg*		⊖ speed Perfect*, Extra Rinse, eco Perfect
Eco	c o L d - 60 °C	6 kg	Hard-wearing fabrics, heat-resistant fabrics made of cotton or linen	Extra Rinse
Hygiene	c o L d - 60 °C	6 kg/ 3,5 kg*		⊖ speed Perfect*, Extra Rinse, eco Perfect; for particularly sensitive skin, longer wash cycle at selected temperature, higher water level, additional rinse cycle
Synthetics + Prewash	c o L d - 60 °C	3 kg	Easy-care fabrics made of cotton, linen, synthetic fibers or blended fabrics	⊖ speed Perfect, Extra Rinse, eco Perfect
Mix	c o L d - 40 °C	2,5 kg	Fabrics made of cotton or easy-care fabrics	⊖ speed Perfect, Extra Rinse, eco Perfect; different types of laundry can be washed together
Jeans	c o L d - 40 °C	3 kg	Dark-coloured fabrics made of cotton and dark easy-care fabrics	⊖ speed Perfect, Extra Rinse, eco Perfect; Reduced rinse and final spin cycle
Shirts	c o L d - 60 °C		Non-iron shirts made of cotton, linen, synthetic fibres or blended fabrics	⊖ speed Perfect, Extra Rinse, eco Perfect
Delicate/Silk	c o L d - 40 °C	2 kg	For delicate, washable fabrics, e.g. made of silk, satin, synthetic fibres or blended fabrics (e.g. curtains)	⊖ speed Perfect, Extra Rinse, eco Perfect
Wool	c o L d - 40 °C		Hand or machine-washable fabrics made of wool or containing wool	Particularly gentle wash programme to prevent shrinkage of laundry. Longer programme breaks (fabrics rest in the detergent solution)
Super quick 30min	c o L d - 40 °C	3,5 kg	Easy-care fabrics made of cotton, linen, synthetic fibres or blended fabrics	Short programmes, suitable for lightly soiled items
Super quick 15min	c o L d - 40 °C	2 kg		
Additional programmes				Rinse ,

* reduced load when using the speed Perfect option.

i Programmes without prewash - add detergent to compartment II, programmes with prewash - distribute the detergent between compartments I and II 4

9301 / 9000840415	WM08B260IN	Siemens-Elektrogeräte GmbH Carl-Wery-Str. 34 81739 München / Deutschland
-------------------	------------	--



Safety instructions

- Read the instruction manual and installation instructions and all other information enclosed with the washing machine and act accordingly.
- Retain the documents for subsequent use.

Risk of electric shock

- Never pull the cable to disconnect the mains plug.
- Only plug in or disconnect the mains plug if your hands are dry.

Danger to life

- For worn-out appliances:
- Disconnect the mains plug.
 - Sever the mains cable and discard along with the plug.
 - Destroy the lock on the washing machine door. This will prevent children from locking themselves in and risking their lives.

Danger of suffocation

- Keep packaging, film and packaging parts out of the reach of children.

Risk of poisoning

- Keep detergents and care products out of the reach of children.

Risk of explosion

- Items of laundry pretreated with cleaning agents containing solvents, e.g. stain remover/cleaning solvent may cause an explosion after being loaded into the washing machine. Rinse items of laundry thoroughly by hand beforehand.

Risk of injury

- The washing machine door can become very hot.
- Be careful when draining hot detergent solution.
- Do not climb onto the washing machine.
- Do not lean on the open washing machine door.
- Do not reach into the drum if it is still rotating.

Consumption values

Programme	Load	Electricity***	Water***	Programme duration***
Cottons 20 °C	6 kg	0.30 kWh	68 l	2 ¼ h
Cottons 40 °C*	6 kg	0.95 kWh	68 l	2 ¼ h
Cottons 60 °C	6 kg	1.60 kWh	68 l	2 ¼ h
Cottons 90 °C	6 kg	2.45 kWh	76 l	2 ½ h
Synthetics 40 °C*	3 kg	0.70 kWh	53 l	1 ¾ h
Mix 30 °C	2.5 kg	0.40 kWh	44 l	1 h
Delicate/Silk 30 °C	2 kg	0.30 kWh	37 l	¾ h
Wool 30 °C	2 kg	0.20 kWh	43 l	¾ h

*Programme setting for testing in accordance with currently applicable EN60456 standard. Note on comparative tests: When testing the test programmes, wash the specified load using the maximum spin speed.

Programme	Additional function	Load	Annual energy consumption	Annual water consumption
Cottons 40/60 °C	eco Perfect**	6/3 kg	196 kWh	10800 l

** Programme settings for testing and energy labelling in accordance with european standard 60456 Ed5 with cold water (15 °C).

***The values may deviate from the specified values depending on water pressure, water hardness, and inlet temperature, ambient temperature, type, amount and level of laundry soiling, detergent used, fluctuations in the power supply and selection of options.



Important information



Before washing for the first time

Do not put any laundry in the machine. Turn the tap on. Pour into compartment II:

- approx. 1 litre water
- detergent (dosage according to the manufacturer's instructions for light soiling and the appropriate degree of water hardness)

Turn the programme selector to **Synthetics 60 °C** and press **Start/Pause** . At the end of the programme, turn the programme selector to **Off**.



Protecting the laundry and the machine

- When measuring the amount of all detergents/additives and cleaning agents, always check the manufacturer's instructions.
- Empty pockets.
- Look out for metal items (paperclips, etc.).
- Wash delicates in a laundry bag (tights, curtains, underwired bras).
- Fasten zips, do up any buttons.
- Brush sand out of pockets and collars.
- Remove curtain fittings or place in the laundry bag.



Loading laundry

Load items of laundry of varying sizes.
Take care not to trap items of laundry between the washing machine door and the rubber seal.



Laundry with varying degrees of soiling

Wash new items of clothing separately.

light Do not prewash. If required, select the **speed Perfect** option.

Pre-treat any stains as necessary.

heavy Do not load as much laundry. Select the programme with prewash.



Soaking *Load laundry of the same colour*

Pour soaking agent/detergent into compartment II in accordance with the manufacturer's instructions. Turn the programme selector to **Cottons 30 °C** and press **Start/Pause** . After approx. 10 minutes, press **Start/Pause** to stop the programme. Once the required soaking time has elapsed, press **Start/Pause** again to continue the programme or to select a different programme.



Starching *Laundry must not be treated with fabric softener*

Starching is possible in all wash programmes if liquid starch is used. Pour starch into the fabric softener compartment in accordance with the manufacturer's instructions (rinse first if necessary).



Dyeing/bleaching

Dye should only be used in normal household quantities. Salt may damage stainless steel. Always follow the dye manufacturer's instructions. Do **not** use the washing machine for bleaching clothes.



Insert for liquid detergent *depending on model*



Position the insert for dispensing liquid detergent:

- Remove the detergent drawer completely → page 10.
- Slide the insert forwards.

Do not use the insert (slide upwards):

- For gel-type detergents and washing powder,
- for programmes with Prewash (Vorwäsche) or the (**Finished in**) function.



Cleaning and care

Machine housing, control panel

- Remove detergent residue immediately.
- Wipe off with a soft, damp cloth.
- Do not clean with a jet of water.

Cleaning and care



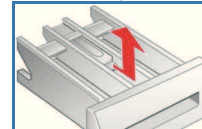
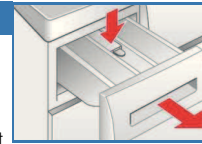
- Risk of electric shock. Disconnect the mains plug.
- Risk of explosion. No solvents.



Cleaning the detergent drawer ...

... if it contains detergent or fabric softener residues.

1. Pull out, press insert down, remove drawer completely.
2. To remove the insert: press the insert upwards from below with your finger.
3. Clean the detergent dispenser tray and insert with water and a brush and dry it.
4. Attach the insert and engage (connect the cylinder to the guide pin).
5. Push in the detergent drawer.



Leave the detergent drawer open so that any residual water can evaporate.



Drum

Leave the washing machine door open so that the drum can dry out.
Rust stains - use chlorine-free cleaning agent, not steel wool.



Descaling

Make sure that there is no laundry in the machine.

This should not be necessary if the correct detergent dosage has been used. If it is necessary, however, proceed according to the descaling agent manufacturer's instructions. Suitable descalers can be obtained via our website or from our after-sales service (→ page 1).

Maintenance



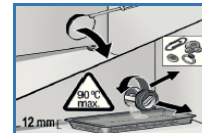
- Risk of scalding
- Allow the detergent solution to cool down.
- Turn off the tap.



Detergent solution pump

Turn the programme selector to **Off** and disconnect the mains plug.

6. Open the service flap
7. Carefully unscrew the pump cover (residual water).
8. Clean the interior, pump cover thread and pump housing (the impeller in the detergent solution pump must rotate).
9. Replace the pump cover and screw it on tightly.
10. Replace the service flap.



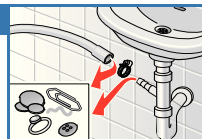
To prevent unused detergent from flowing straight into the drain during the next wash: Pour 1 litre of water into compartment II and start the **Spin / Empty** programme.



Drainage hose at the siphon is blocked

Turn the programme selector to **Off** and disconnect the mains plug.

1. Loosen the hose clamp and carefully remove the drainage hose (caution: residual water).
2. Clean the drainage hose and siphon connecting piece.
3. Reattach the drainage hose and secure the connection with the hose clamp.

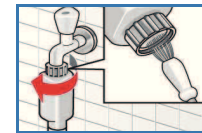


Filter in the water inlet is blocked

- Risk of electric shock
- Do not immerse the Aqua-Stop safety device in water (it contains an electric valve).

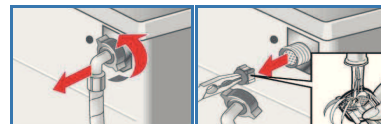
Reduce the water pressure in the supply hose:

1. Turn off the tap.
2. Select any programme (except for **Spin / Empty** programme).
3. Press **Start/Pause** . Let the programme run for approximately 40 seconds.
4. Turn the programme selector to **Off**. Disconnect the mains plug.
Clean the filter:
5. Disconnect the hose from the tap.
Clean the filter with a small brush.



and/or on standard and Aqua-Secure models:
Remove the hose from the rear of the appliance,
Take out the filter with a pair of pliers and clean it.

6. Connect the hose and check for leaks.



What to do if...

Water is leaking out.	<ul style="list-style-type: none"> - Attach/replace the drainage hose correctly. - Tighten the screw connection of the supply hose.
No water supply. Detergent not dispensed.	<ul style="list-style-type: none"> - Start/Pause \diamond not selected? - Tap not turned on? - Filter blocked? Clean the filter \rightarrow page 10. - Supply hose kinked or trapped?
Washing machine door cannot be opened.	<ul style="list-style-type: none"> - Safety function active. Programme stopped? \rightarrow page 4. - ---- (Rinse stop = no final spin) selected? \rightarrow page 3,4.
Programme does not start.	<ul style="list-style-type: none"> - Start/Pause \diamond or \odot (Finished in) time selected? - Washing machine door closed? - Childproof lock active? Deactivating \rightarrow page 5.
Detergent solution is not drained.	<ul style="list-style-type: none"> - ---- (Rinse stop = no final spin) selected? \rightarrow page 3, 4. - Clean the detergent solution pump \rightarrow page 10. - Clean the waste pipe and/or drainage hose.
Water not visible in the drum.	<ul style="list-style-type: none"> - Not a fault - water below the visible area.
Spin result not satisfactory. Laundry wet/too damp.	<ul style="list-style-type: none"> - Not a fault - the imbalance monitoring system has interrupted the spin because the laundry is unevenly distributed. Distribute large and small items of laundry evenly in the drum. - Speed selected too low? \rightarrow page 5.
The programme duration changes during the wash cycle.	<ul style="list-style-type: none"> - Not a fault - the programme cycle is optimised for the particular washing process. This can cause changes in the programme duration on the display panel.
Spin cycle performed several times.	<ul style="list-style-type: none"> - Not a fault - unbalanced-load detection system is adjusting the imbalance.
Residual water in the \otimes compartment for care products.	<ul style="list-style-type: none"> - Not a fault - the action of the care product is not affected. - Clean the insert if necessary \rightarrow page 10.
Odour formation in the washing machine.	<ul style="list-style-type: none"> - Run programme $\text{Cottons } 90^\circ\text{C}$ without laundry. Use standard detergent.
Status display flashing . Appliance has detected a detergent overload.	<ul style="list-style-type: none"> - Too much detergent used? Mix one tablespoonful of fabric softener with $\frac{1}{2}$ litre water and pour into compartment II (<i>Not for outdoor fabrics, sportswear fabrics or those made with down.</i>) - Reduce the detergent dosage for the next wash cycle.
Loud noises, vibrations and "wandering" during the spin cycle.	<ul style="list-style-type: none"> - Are the appliance feet fixed? Secure appliance feet \rightarrow <i>Installation instructions</i>. - Transportation safety devices removed? Remove transportation safety devices \rightarrow <i>Installation instructions</i>.
Display panel/indicator lamps do not function during operation.	<ul style="list-style-type: none"> - Power cut? - Circuit breakers tripped? Switch the circuit breakers back on or replace. - If the fault occurs repeatedly, call the after-sales service.
Programme sequence longer than usual.	<ul style="list-style-type: none"> - Not a fault - unbalanced-load detection system is adjusting the imbalance by repeatedly redistributing the laundry. - Not a fault - foam detection system active - adds an additional rinse cycle.
There are detergent residues on the laundry.	<ul style="list-style-type: none"> - Occasionally, phosphate-free detergents contain water-insoluble residues. - Select Rinse $\text{}$ or brush down the laundry after washing.

If you cannot correct a fault yourself (switching on/off) or a repair is required:

- Turn the programme selector to **Off** and remove the mains plug from the socket.
- Turn off the water supply and call the after-sales service \rightarrow *Installation instructions*.



Observe the safety instructions on page 8.



Washing machine

Instruction manual

en



Do not operate the washing machine until you have read these instructions and the separate installation instructions.

SIEMENS