

Solving Minor Problems Yourself

Problem	Possible Causes	Solution
The iron does not work or is not heating up.	Temperature control (I) on a very low setting.	Turn the temperature control to the desired position.
	Connection problems.	Check that the plug is inserted into the mains socket correctly.
The clothes tend to stick.	Temperature control (I) setting is too high.	Turn the temperature control to a lower setting.
Water comes out of the soleplate together with steam.	Temperature control (I) setting is too low.	Turn the temperature control to a higher setting.
	Steam regulator (A) is set too high in conjunction with a low temperature.	Turn the steam regulator to a lower setting.
	You have pressed the shot of steam button (L) repeatedly without waiting for 5 seconds between each press.	Wait 5 seconds between each press of the shot of steam button.
	Tap or part distilled water has not been used (see "Filling the water tank" section) or other products such as fragrant water have been added to the tank.	Mix distilled water with tap water as directed in the "Filling the water tank" section, and never add any other products to the water tank.
Iron is not steaming.	Steam regulator (A) in "0" or "calc" position.	Turn the steam regulator to "1" or "2" position.
	No water in tank.	Fill the tank.
	Scale obstruction of internal components.	Remove the steam regulator (A) and clean it. If this does not help contact an Authorised Technical Service Centre.
Spray does not work.	No water in the tank.	Add water to the water tank.
	Obstructed mechanism.	Contact an Authorised Technical Service Centre.
Water comes out from the soleplate before plugging the iron in.	The steam regulator (A) is not properly closed.	Place the steam regulator in the "0" position.
Deposits come out through the holes in the soleplate.	Traces of lime scale are coming out of the steam chamber.	Carry out a cleaning cycle "see "Multiple de-scaling system" section)
The iron begins to smoke when switched on.	During first use: Certain components on the appliance have been lightly greased at the factory and may produce a little smoke when initially heated.	This is completely normal and will stop after a short while.
Flashing lamp on top of handle (*)	Auto-shut off has been activated.	Move the iron gently from side to side to re-start it. The lamp will then flash once before it re-heats.

(*) Model dependent

You can download this manual from the local homepages of Bosch



TDA 26.. sensixx B1



BOSCH

Customer Service

Great Britain
Bosch Customer Service
Grand Union House
Old Wolverton Road
Milton Keynes
MK12 5PT
UK +44 (0)844 892 8923
IRL +353 (0)1450 2655
www.bosch-home.co.uk

004 TDA26..GB/07/12

Operating instructions

Thank you for buying the TDA26 steam iron from Bosch. This iron has a lightweight design and is built to perform.

These instructions contain valuable information about the unique features of this iron and some hints to make ironing easier for you.

Please visit www.bosch-home.co.uk for more product information or to register your product, just follow the link to the Online guarantee registration.

Before using the Iron for the first time

Please carry out the following steps:

1. Remove the protective cover from the soleplate before using the iron.
2. While the iron is unplugged, fill the water tank (E) with tap water and set the temperature control (I) to "max" by lining it up with the pointer (H).
3. Plug the appliance into the mains and when the iron has reached the correct temperature (the pilot light [K] goes out), set the steam regulator (A) to the "2" position.
4. Hold the iron horizontally and repeatedly press the shot of steam button (L). Any residue should come out of the soleplate (G). It may smoke and smell – this is normal and will cease after a short while.
5. If necessary, carefully clean the soleplate down with a dry, folded cloth.

Cleaning and Maintenance

⚠ Attention! Risk of burns!

For general cleaning, follow the information below:

Problem	Solution
Dirty/lightly marked iron body or soleplate	Clean the body of iron or soleplate with a damp cloth then dry it..
Mark develops on soleplate during use	Set the iron to its maximum temperature setting. Rub the iron a few times over with a dry cotton cloth folded several times.
Heavily stained soleplate	While the iron is cold, iron a linen cloth soaked in white vinegar. Then dampen a cloth with water and wipe the soleplate clean and dry thoroughly.

DO NOT de-scale or clean the water tank with cleaning products or solvents, as these could cause the iron to drip when using the steam function.

DO NOT use a "professional steam cleaner" for cleaning the appliance.

DO NOT use sharp objects or abrasive products to clean the soleplate or any other part of the appliance. To keep the soleplate in good condition, do not allow it to come into contact with metal objects.

GUARANTEE TERMS

The terms of the guarantee for this appliance are in accordance with that stated by our representative for the country in which it is sold. Details of those conditions can be obtained from the retailer from whom the appliance was purchased. The SALES RECEIPT must be presented when making any claims against the terms of this guarantee. We reserve the right to make technical modifications.

Environmental Care

This iron has been designed according to ecological criteria related to sustainable development; analysing its whole lifecycle, from material selection to its later reuse or recycling; evaluating the improvement possibilities from a technical, ecological and environmental point of view.

Before throwing a used appliance away, you should make it noticeably inoperable e.g. cut off the mains lead and be certain to dispose of it in accordance with current laws and regulations.

Your retailer, town council or local council can give you detailed information about these.



This appliance is labelled in accordance with European Directive 2002/96/EG concerning used electrical and electronic appliances (waste electrical and electronic equipment – WEEE).

The guideline determines the framework for the return and recycling of used appliances as applicable throughout the EU.

Important

This iron has been designed according to ecological criteria, related to the sustainable development; analyzing its whole lifecycle, from material selection to its later reusing or recycling; evaluating the improvement possibilities, from a technical, economical and environmental point of view.

This appliance has been designed exclusively for domestic use and must not be used for industrial purposes.

Carefully read through the operating instructions for the appliance and safeguard them for future reference.

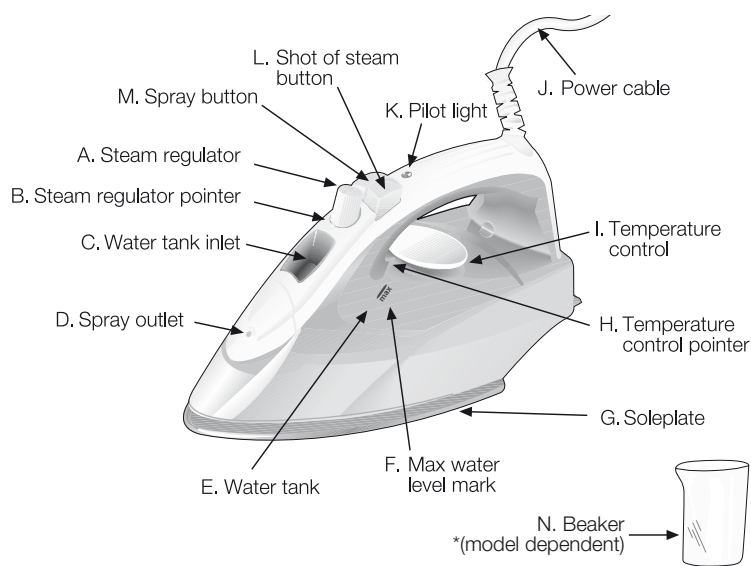
General safety instructions

- The iron must not be left unattended while it is connected to the supply mains.
- Remove the plug from the socket before filling the appliance with water or before pouring out the remaining water after use.

- The appliance must be used and placed on a stable surface.
- When placed on its stand, make sure that the surface on which the stand is placed is stable.
- The iron should not be used if it has been dropped, if there are visible signs of damage or if it is leaking water. It must be checked by an authorized Technical Service Centre before it can be used again.
- With the aim of avoiding dangerous situations, any work or repair that the appliance may need, e.g. replacing a faulty mains cable, must only be carried out by qualified personnel from an Authorised Technical Service Centre.
- This appliance can be used by children aged from 8 years and above and persons with reduced physical, sensory or mental capabilities or lack of experience and knowledge if they have been given supervision or instruction concerning use of the appliance in a safe way and understand the hazards involved. Children shall not play with the appliance. Cleaning and user maintenance shall not be made by children without supervision.
- Keep the iron and its cord out of reach of children less than 8 years of age when it is energized or cooling down.
- This appliance is to be connected and used in accordance with the information stated on its characteristics plate.
- This appliance must be connected to an earthed socket. If it is absolutely necessary to use an extension cable, make sure that it is suitable for 16A and has a socket with an earth connection.
- If the safety fuse fitted in the appliance blows, the appliance will be rendered inoperative. To restore normal operation the appliance will have to be taken to an authorised Technical Service Centre.
- In order to avoid that, under unfavourable mains conditions, phenomena like transient voltage drops or lighting fluctuations can happen, it is recommended that the iron is connected to a power supply system with a maximum impedance of 0.27Ω. If necessary, the user can ask the public power supply company for the system impedance at the interface point.
- The appliance must never be placed directly under the tap to fill the water tank.
- Unplug the appliance from the mains supply after each use, or if a fault is suspected.
- The electrical plug must not be removed from the socket by pulling the cable.
- Never immerse the iron in water or any other fluid.
- Do not leave the appliance exposed to weather conditions (rain, sun, frost, etc.)

Using Your Iron

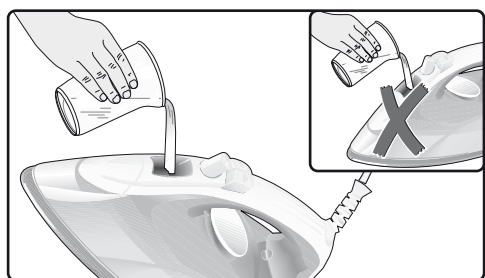
1 Your iron



2 Filling the water tank

Set the steam regulator (A) to the "0" position (no steam) by lining it up with the pointer (B) on the iron and unplug the iron from the mains!

- Place the iron at an angle of 45° with the point facing upwards.
- Fill the water tank (E) via the water tank inlet (C) but never above the "max" mark (F) using the beaker * (N).



Use only clean water from the tap and do not mix anything with it. The addition of other liquids, such as perfume, will damage the appliance.

DO NOT use condensation water from tumble dryers, air conditioners or similar appliances. This appliance has been designed to use normal tap water.

To prolong the optimum steam function it is possible to mix tap water with distilled water 1:1. If the tap water in your district is very hard, mix tap water with distilled water 1:2.

You can inquire about the water hardness with your local water supplier.

7 Ironing without steam

This function enables the iron to be used for dry ironing.

- Set the steam regulator (A) to the "0" position.
- Select an appropriate temperature for the type of material being ironed.

8 Spray

This can be used to remove stubborn wrinkles.

- Do not use the spray function with silk as staining may occur.
- Make sure that there is water in the tank (E).
- When ironing, press the spray button (M) and water will spray out of the spray outlet (D) onto the garment.

9 After finishing each ironing session

- Unplug the iron from the mains socket.
- Set the steam regulator (A) to the "0" position.
- Hold the iron upside down over a sink and shake it gently until all the water has come out from the water tank inlet (C).
- Set the iron aside in a vertical position to cool down.
- Coil the power cable (J) loosely around the heel of the iron before storing.
- Store the iron in an upright position.

10 Multiple de-scaling system

This range of irons is equipped with the following descaling features "AntiCalc".

A. self-clean

Each time you use the steam regulator (A), the "self-clean" system cleans the mechanism of any scale deposits.

B. calc'n clean

The "calc'n clean" function helps to remove scale particles out of the steam chamber. Use this function approximately every 2 weeks:

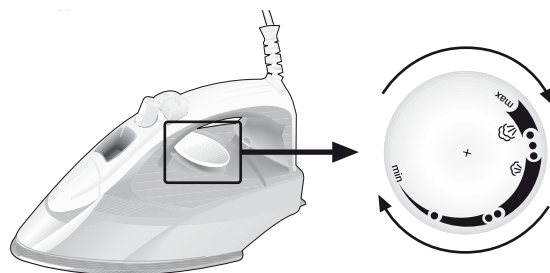
- Fill the water tank (E) with water.
- Set the temperature control (I) to the "•••" or "max" position and plug in the iron.
- After the necessary warm-up period, unplug the iron.
- Hold the iron over a sink (the correct way up) and remove the steam regulator (A) by turning it to the "calc" position while pressing it down, then carefully taking out the spring wrapped around the needle.
- Using one fully filled beaker * (approximately 150 ml) slowly pour water into the steam regulator hole (see picture below).

3 Setting the temperature

The temperature control (I) adjusts the temperature of the soleplate (G).

- Check the temperature instructions shown on the care label of the garment you are ironing and set the temperature control (I) to the corresponding position by lining it up with the temperature control pointer (H) on the iron:

Fabric	Temperature Setting
Synthetics	•
Silk - Wool	••
Cotton - Linen	•••

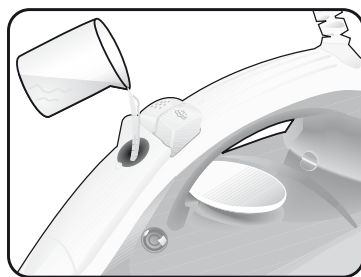


- If you are unsure what type of material the garment is made from, start ironing on the lowest temperature setting and increase accordingly. If the garment is made from mixed fabrics, set the temperature for the most delicate material.
- For silk, woollen or synthetic materials iron the reverse side of the fabric to prevent shiny patches. Avoid using the spray function to prevent stains.
- Sort your garments based on their care labels, always starting with those that have to be ironed at the lowest temperature.
- The pilot light on the top of the handle (K) will stay lit while the iron is heating up and go out once the selected temperature has been reached. Wait for a few seconds after the light goes out before you start ironing. Once the iron is ready, you can continue to iron even if the pilot lamp comes on again.
- If your iron has auto shut-off and the pilot light is flashing, the auto-shut off has activated. Gently move the iron from side to side to restart it.

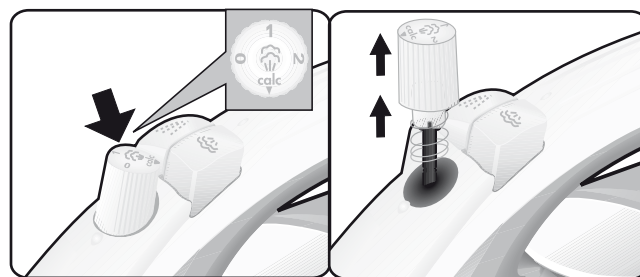
4 Ironing with steam

The steam regulator (A) is used to adjust the amount of steam produced when ironing.

- Make sure that there is water in the tank (E).
- Adjust the temperature control (I) and then set the steam regulator (A) according to the table below by lining it up with the steam regulator pointer (B). Steam will automatically be produced.



- Gently shake the iron. Boiling water and steam will come out of the soleplate (G), carrying scale or deposits that might be there. When the iron stops dripping, reassemble the steam regulator by reinserting it, lining up the "calc" position with the pointer, pressing it in and turning it to the "0" position.
- If the steam regulator needle is soiled, remove any deposits from the tip with vinegar and rinse it off with clean water.



C. anti-calc (model dependent)

The anti-calc cartridge has been designed to reduce the build-up of scale produced during steam ironing, helping to extend the useful life of your iron. Nevertheless, the "anti-calc" cartridge cannot remove all of the scale that is produced naturally over time.

11 Anti-drip system "Drip Stop"

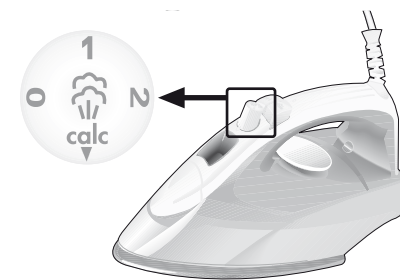
The irons in this range are equipped with an anti-drip system.

This will automatically stop the iron producing steam when the selected temperature setting is too low to prevent water from dripping out of the soleplate.

You may hear a clicking sound when this system is in operation.

Temperature Setting	Steam Regulator Setting
••• to "max"	2
••	1

- You can get extra steam by pressing and holding the steam regulator (A) for a maximum of 2 seconds.



Note: At a temperature setting of "•", the soleplate is not hot enough to produce steam, so the steam regulator (A) should be set to the "0" position to avoid water dripping from the soleplate (G).

5 Ironing with shot of steam

This can be used to remove stubborn wrinkles or to press in a sharp crease or pleat. It cannot be used on a synthetic setting for delicate items.

- Make sure that there is water in the tank (E).
- Set the temperature control (I) to the "•••" or "max" position and the steam regulator (A) to the "2" position.
- Press the shot of steam button (L) on the handle repeatedly at intervals of 5 seconds.

6 Vertical steaming with shot of steam

This can be used to remove creases from hanging clothes, curtains etc. It cannot be used on a synthetic setting for delicate items.

WARNING! Do not vertical steam while the item is being worn. Never spray or aim steam at people or animals!

- Make sure that there is water in the tank (E).
- Set the temperature control (I) to the "•••" or "max" position and the steam regulator (A) to the "2" position.
- Hold the iron in an upright position about 15 cm away from the garment being steamed.
- Press the shot of steam button (L) on the handle at intervals of 5 seconds, however, after 4 jets of steam, wait for 10 seconds to allow for continued steam production.

Additional Features (Model Dependent)

Large filling inlet with lid



Auto shut-off "Secure"

Some irons in this range are equipped with an auto-shut off system.

The "Secure" auto shut-off function switches off the iron automatically when it is not being used, thus helping to prevent accidents and saving energy. When the appliance is first plugged in, this function will be inactive for the first 2 minutes to allow it to reach the set temperature.

If during ironing, the iron is not moved for a certain length of time, the iron will automatically switch off. The length of time will depend on the position the iron has been left in:

- Horizontally (flat) or on its side: 30 seconds
- Vertically (upright): 8 minutes

The pilot light on the top of the handle (K) will flash when auto shut-off has been activated. To switch the iron back on, move it gently from side to side. The light will stop flashing.

Tips to help you save energy

Steam production consumes the most energy. To help minimise the energy used, follow the advice below:

- Start by ironing the fabrics that require the lowest ironing temperature.
- Regulate the steam according to the selected ironing temperature.
- Only use steam if necessary. If possible, use the spray function instead.
- Try to iron the fabrics while they are still damp and reduce the steam setting. Steam will be generated from the fabrics rather than the iron. If you tumble dry your fabrics before ironing them, set the tumble drier to the 'iron dry' programme.
- If the fabrics are damp enough, turn off the steam regulator completely.
- Stand the iron upright during pauses. Resting it horizontally with the steam regulator on generates wasted steam.