

# Your dryer

**Congratulations** – you have chosen to buy a modern, high-quality Siemens domestic appliance. A distinctive feature of the condensation dryer with heat pump and automatic cleaning of the heat exchanger is its low energy consumption. Every dryer which leaves our factory is carefully checked to ensure that it functions correctly and is in perfect condition. Should you have any questions, our after-sales service will be pleased to help.

**Environmentally-responsible disposal**  
Dispose of packaging in an environmentally-responsible manner. This appliance is designated according to European directive 2002/96/EC which governs waste electrical and electronic equipment - WEEE). The directive provides an EU-wide framework for the return and recycling of used appliances.

For further information about our products, accessories, spare parts and services, please visit: [www.siemens-home.com](http://www.siemens-home.com)

## Contents

■ Preparation	2
■ Control panel	2
■ Drying	3/4
■ Display panel and buttons	5
■ Notes on laundry	6
■ Overview of programmes	7
■ Important Information	8
■ Consumption rates	9
■ Normal noises	10
■ What to do if ... / After-sales service	11/12
■ Safety instructions	13

## Intended use

- For domestic use only.
  - Only to be used for drying fabrics that have been washed with water.
- Do not leave children unsupervised near the dryer. Keep pets away from the dryer. The dryer can be operated by children 8 years old and older, by persons with reduced physical, sensory or mental abilities and by persons with insufficient experience or knowledge if they are supervised or have been instructed in its use by a responsible adult.**

## Programmes / Fabrics

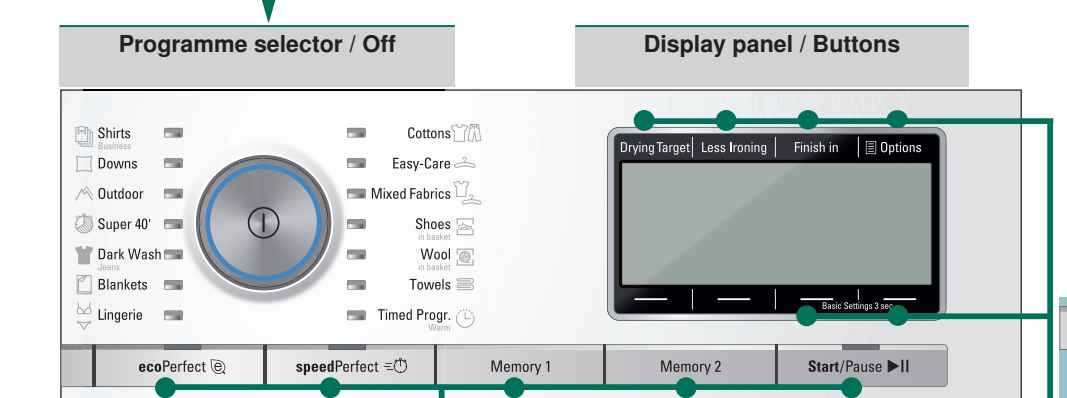
Detailed overview of the programmes and fabrics → *Programme overview, Page 7.* Observe the care information on the care label. Dryness level, timer programming and options can be individually selected depending on the selected programme and the progress of the programme.

<b>Cottons</b>	Hard-wearing fabrics
<b>Easy-Care</b>	Fabrics made from synthetic or blended fabrics
<b>Mixed Fabrics</b>	A mixed load of fabrics made of cotton or synthetic fabrics
<b>Shoes in basket</b>	Shoes
<b>Wool in basket</b>	Hand or machine-washable fabrics made of wool or containing wool
<b>Towels</b>	Terry-towelling laundry e.g. towels and bathrobes
<b>Timed Progr. Warm</b>	All types of fabric except for wool and silk
<b>Shirts Business</b>	Shirts and blouses made of cotton and blended fabrics
<b>Downs</b>	Cushions and quilts
<b>Outdoor</b>	Weatherproof and outdoor clothing with a membrane coating and water-repellent fabrics
<b>Super 40'</b>	Synthetic fibres, light cotton or mixed fabrics
<b>Dark Wash Jeans</b>	Fabrics made from jeans/denim
<b>Blankets</b>	Large quilted fabrics containing synthetic fibres
<b>Lingerie</b>	Very delicate synthetic, cotton or blended fabrics

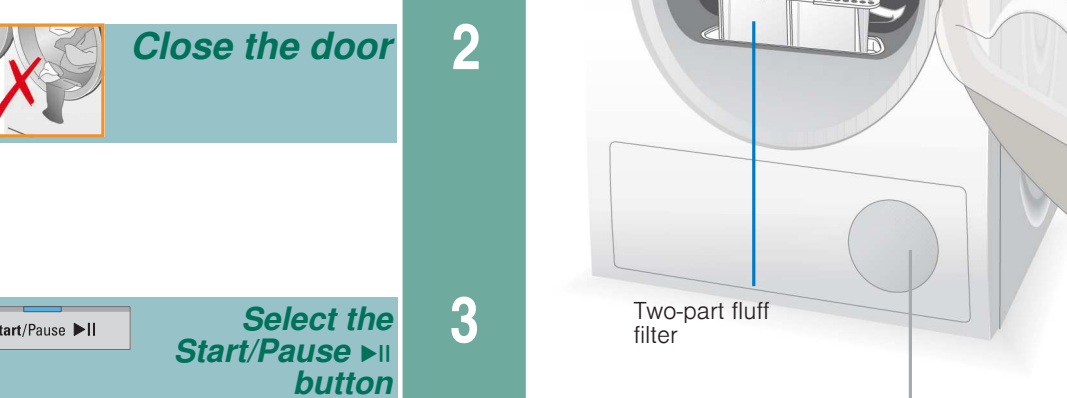
## Preparation

- Never start the dryer if it is damaged. Inform your after-sales service.
  - Make sure your hands are dry. Hold the plug only.
- Remove all items from pockets. Check for cigarette lighters. The drum must be empty prior to loading. See programme overview on page 7.**

The dryer is switched on and off by pressing the **Start/Pause** button in the centre of the programme selector. Select the programme by turning the outer ring on the programme selector (the selector can be turned in both directions). The selected programme is displayed.

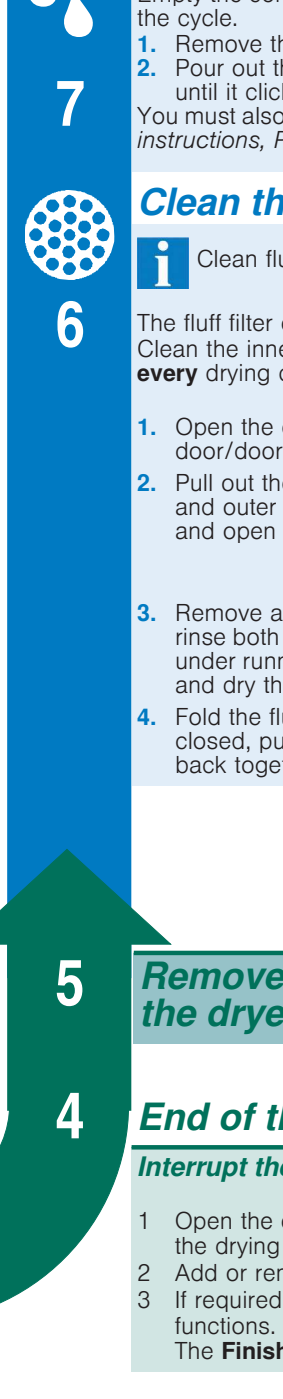


<b>ecoPerfect</b>	Energy-saving programme sequence
<b>speedPerfect</b>	Accelerated programme sequence
<b>Memory 1</b>	Saves or calls individual settings
<b>Memory 2</b>	Saves or calls individual settings
<b>Start/Pause</b>	Starts or pause the programme



<b>Change the functions in the display using the buttons</b>	
<b>Drying Target</b>	C/board Dry Extra, C/board Dry, Iron Dry
<b>Less Ironing</b>	Reduced ironing function can be set up to 120 minutes
<b>Finish in</b>	Time delay, Childlock
<b>Options</b>	Spin Speed, Adjust drying level, low heat
<b>Basic Settings 3 sec.</b>	end signal, button signal, auto power-off and Language

## Drying



## Empty the condensation container

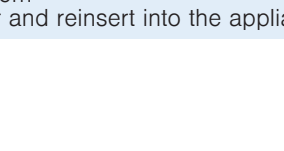
Empty the container **after each** drying cycle, and not during the cycle.

- Remove the container, holding it level.
- Pour out the condensation. Push the container back in until it clicks into place. You must also observe the → *Installation and maintenance instructions, Page 3.*

## Clean the fluff filters

Clean fluff filters reduce energy consumption. The fluff filter consists of two parts. Clean the inner and outer fluff filter **after every** drying cycle.

- Open the door. Remove fluff from the door/door area.
- Pull out the inner and outer fluff filter and open them out.
- Remove any fluff, rinse both fluff filters under running water and dry thoroughly.
- Fold the fluff filters closed, put them back together and reinsert into the appliance.



## Remove the laundry and switch off the dryer

**End of the programme ... Interrupt the programme**

- Open the door or press the **Start/Pause** button; the drying cycle is cancelled.
- Add or remove laundry and close the door.
- If required, select a new programme and additional functions. Press the **Start/Pause** button. The **Finish in** time is updated after a few minutes.

## Display panel and buttons

- Display panel**
- Please clean lint filter**
- Please empty condensate container**
- Heat exchanger is being rinsed**
- Buttons**
- Drying Target**
- Less Ironing**
- Finish in**
- Options**

## Information on laundry ...

### Labelling of fabrics

Follow the manufacturer's care information.

- Suitable for tumble drying
- Dry at normal temperature.
- Dry at low temperature.
- Do not tumble dry.

**Do not tumble-dry the following fabrics:**

- Non-breathable fabrics (e.g. rubber-coated).
- Delicate materials (silk, curtains made from synthetic material) → these may crease.
- Oil-stained laundry.

### Drying tips

- To ensure a consistent drying result, sort the laundry by fabric type and drying programme.
- Always dry very small fabrics (e.g. baby socks) together with large items of laundry (e.g. towels).
- Close zips, hooks and eyelets, and button up covers.
- Tie cloth belts, apron strings, etc. together or use a laundry bag.
- Do not over-dry easy-care laundry → Risk of creasing. Allow laundry to finish drying in the air.
- Do not iron laundry immediately after drying; fold items up and leave for a while → residual moisture will then be distributed evenly.
- Knitted fabrics (e.g. T-shirts, jerseys) often shrink slightly the first time they are tumble-dried. → Do not use the **C/board Dry Extra** programme.
- Starched laundry is not always suitable for dryers → starch leaves behind a coating that reduces the drying effect.
- When washing laundry that is to be tumble-dried afterwards, use the correct amount of fabric softener as specified in the manufacturer's instructions.
- With a small load, use the **Timed** programme.

### Environmental protection / Energy-saving tips

- Before drying, spin the laundry in the washing machine → the higher the spin speed, the shorter the drying time will be, thus less energy is consumed.
- Also spin easy-care laundry.
- Use the maximum recommended capacity, but do not exceed it → *Programme overview, Page 7.*
- Make sure the room is well ventilated during drying.
- Clean the fluff filters after every drying cycle → *Cleaning the fluff filters, Page 4.*
- Keep the supply of cool air unobstructed → Do not cover or block the air inlet.

### Overview of Programmes

Sort the laundry according to type of textile and fabric. Fabrics must be suitable for tumble drying → Dryness levels can be individually selected → C/board Dry Extra, C/board Dry and Iron Dry (depending on the model and programme). Degree of dryness can be finely adjusted (depending on the programme). Multi-layered fabrics require a longer drying time than single-layered fabrics. Recommendation: Dry separately.

Programmes	Max.	Type of Fabric	Options and Notes
<b>Cottons</b>	8 kg/ 5 kg*	Hard-wearing fabrics, boll-resistant fabrics made of cotton or linen	
<b>Easy-Care</b>	3.5 kg	Fabrics made from synthetic or blended fabrics	
<b>Mixed Fabrics</b>	3.5 kg	A mixed load of fabrics made of cotton and synthetic fabrics	
<b>Shoes in basket</b>	1 pair	Shoes	Use with separate basket only → see the woollens basket description.
<b>Wool in basket</b>	1 kg	Hand or machine-washable fabrics made of wool or containing wool	Use with separate basket only → see the woollens basket description.
<b>Towels</b>	3.5 kg	Terry-towelling laundry e.g. towels and bathrobes	
<b>Timed Progr. Warm</b>		All types of fabric except for wool and silk	
<b>Shirts Business</b>	1.5 kg	Shirts and blouses made of cotton and blended fabrics	For pre-dried, multi-layered fabrics or small, individual items of laundry. Also for subsequent drying. Creasing is reduced. Not completely dried.
<b>Downs</b>	1.5 kg	Cushions and quilts	Dry individually.
<b>Outdoor</b>	2 kg	Weatherproof and outdoor clothing with a membrane coating and water-repellent fabrics	Particularly gentle.
<b>Super 40'</b>	2 kg	Synthetic fibres, light cotton or mixed fabrics	Easy-to-dry textiles.
<b>Dark Wash Jeans</b>	6 kg	Fabrics made from jeans/denim	
<b>Blankets</b>	2 kg	Large quilted fabrics containing synthetic fibres	No down filling.
<b>Lingerie</b>	2 kg	Very delicate synthetic, cotton or blended fabrics	

## Important information...

**!** Never operate the dryer without the fluff filters or the filter in the condensation container.

### Fluff filters

During drying, fluff and hair from the laundry is trapped by the fluff filter. A blocked fluff filter may impair the heat exchange process. The fluff filters must therefore be cleaned after every drying cycle. Rinse regularly under running water → Page 4.

When cleaning the fluff filter, make sure that no foreign material (down, filling material) enters the air duct opening. If necessary, clean the drum beforehand with a vacuum cleaner. If foreign material should still enter the air duct → call the after-sales service.

### Filter in the condensation container

The filter in the condensation container cleans the condensation. This condensation is required for the automatic cleaning process. The filter should be cleaned regularly under running water. Empty the condensation container before cleaning the filter → *Installation and maintenance instructions*, Page 3.

### Fabrics

Do not dry any fabrics that have come into contact with solvents, oil, wax, grease or paint: e.g. hair styling products, nail varnish remover, stain remover, cleaning solvent, etc. Empty all pockets. Do not dry non-breathable fabrics. Avoid drying laundry items that produce a lot of fluff. Woollens should be refreshed or dried using the woollens programme only.

## Consumption rates

Fabrics/programmes	Residual moisture in the fabrics after spinning	Drying time**	Energy consumption**
<b>👚 Cottons 8 kg</b>			
👖 C/board Dry*	1400 rpm	50 %	162 min
	1000 rpm	60 %	186 min
	800 rpm	70 %	210 min
👕 Iron Dry*	1400 rpm	50 %	118 min
	1000 rpm	60 %	142 min
	800 rpm	70 %	166 min
<b>👚 Easy-Care 3.5 kg</b>			
👖 C/board Dry*	800 rpm	40 %	51 min
	600 rpm	50 %	62 min

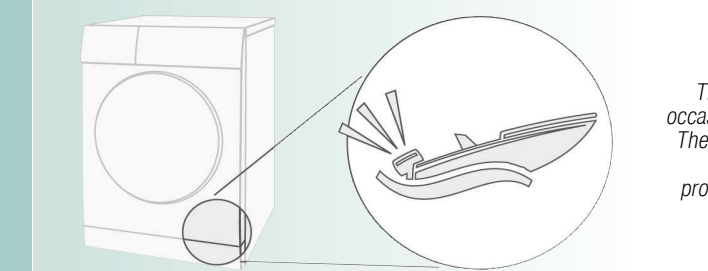
\* Programme setting for testing in accordance with applicable standard EN61121.  
 \*\* The values may differ from those specified, depending on the type of fabric, composition of laundry to be dried, residual moisture in the fabric and the amount of laundry being loaded.

Fabrics/programmes	Option	Drying time	Annual energy consumption
<b>👚 Cottons 8 kg / 4 kg*</b>			
👖 C/board Dry	ecoPerfect @***	146 min / per cycle	213 kWh / per year

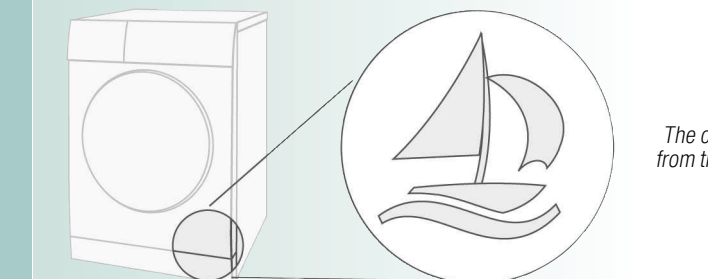
\*\*\*Programme setting for testing and energy labelling in accordance with Directive 2010/30/EU.

## Normal noises

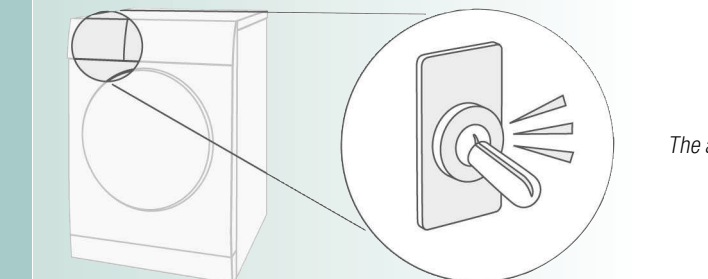
During drying, the compressor and the pump generate some noise which is entirely normal.



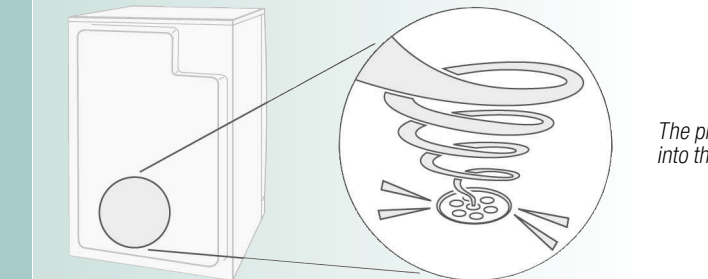
The compressor in the dryer may occasionally generate a humming noise. The volume and pitch of this may vary depending on the selected programmes and the progress of the drying.



The compressor in the dryer is ventilated from time to time, which creates a whirring sound.



The automatic cleaning process causes a clicking noise.



The process of pumping the condensation into the condensation container generates pumping noises.

## What to do if ...

**!** If you cannot rectify a fault yourself (e.g. by switching the dryer off/on), please contact our after-sales service. We will always find an appropriate solution and will avoid unnecessary visits by engineers. Trust the expertise of the manufacturer and rest assured that the repair will be carried out by trained service technicians using original spare parts. The contact details of your local **after-sales service** can be found in the enclosed after-sales service directory:  
 – **GB** 0844 8928999 (Calls from a BT landline will be charged at up to 3 pence per minute. A call set-up fee of up to 6 pence may apply.)  
 – **IE** 01450 2655 (0.03 € per minute at peak. Off peak 0.0088 € per minute.)  
 When contacting the after-sales service, please specify the product number (E-Nr.) and production number (FD) of your appliance(see inside of door). Switch the dryer off using the programme selector and unplug the mains plug from the socket.

- **Please empty condensate container** is displayed. Emptying the condensation container → Page 4. Press any button. Press the **Start/Pause** ►|| button again.
- **Please empty condensate container** is displayed and the drying cycle is interrupted. Is the filter in the condensation container dirty? → Clean the filter in the condensation container → *Installation and maintenance instructions*, Page 3.
- **Please clean lint filter** is displayed. Clean the fluff filters → Page 4. Press the **Start/Pause** ►|| button again.
- Dryer does not start. Has the **Start/Pause** ►|| button been pressed? Door closed? Ambient temperature greater than 5 °C?
- Water is leaking out. Make sure the dryer is level. Push the condensation container back in until it locks fully into place.

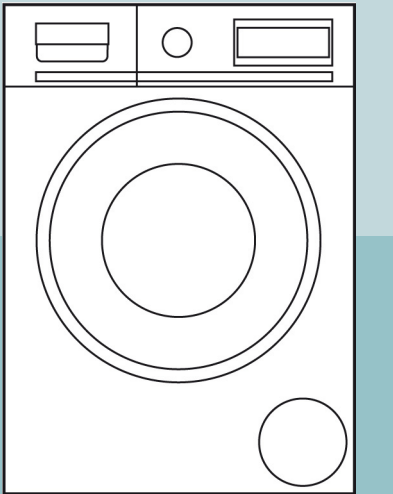
## What to do if ...

- Drying result was not achieved (laundry too damp). Warm laundry feels damper than it really is. The selected programme does not suit the load. Use another drying programme or, in addition, select the time programme → *Programme overview*, Page 7. Use the « Adjust drying level » option → Page 5. Thin layer of limescale on the moisture sensors? Clean the moisture sensors → *Installation and maintenance instructions*, Page 2. Programme termination, e.g. condensation container full, mains power supply failure, door open or maximum drying time reached.
- Drying time too long. Clean the fluff filters under running water → Page 4. Insufficient supply of air → Ensure that air can circulate. Air inlet may be obstructed? Clear the inlet → *Installation and maintenance instructions*, Page 1. Ambient temperature higher than 35 °C → Ventilate the room.
- The humidity in the room increases significantly. Make sure the room is sufficiently ventilated.
- **Heat exchanger is being rinsed** is displayed in the display panel. Not an error. Automatic cleaning of the heat exchanger. Do not empty the condensation container during the cleaning process.
- Power failure. As a result of a power failure, the programme is cancelled. If the laundry is still too damp: Switch on the appliance and restart the programme.
- Other intermittent noises and vibrations. Normal noises → Page 10.

## Safety instructions

- !** **Emergency ONLY use the dryer...**  
**The dryer must NEVER...**  
**Hazards**
- Pull the appliance plug out of the socket immediately or disconnect the fuse.
  - in rooms inside the house.
  - to dry fabrics.
  - be used for purposes other than those described above.
  - be modified in terms of its technology or properties.
  - The dryer must not be used by children or persons who have not been instructed in its use.
  - Do not leave children unsupervised near the dryer.
  - Keep pets away from the dryer.
  - Remove all objects from pockets, and lighters in particular → **Risk of explosion.**
  - Do not lean or sit on the door → **Risk of tipping.**
  - Open the door carefully. Hot steam may escape. Fabrics and drum may be hot → **Risk of burns.**
- Installation**
- Secure loose leads or hoses, otherwise there is a **risk of tripping.**
  - Below 0 °C there is a possibility of frost damage.
- Mains connection**
- Connect the dryer to an AC earthed socket according to specifications, otherwise it cannot be guaranteed that the appliance is completely safe.
  - The cable cross-section must be sufficient.
  - Only use earth-leakage circuit breakers with the following symbol:
  - The appliance plug and socket must be compatible.
  - Do not use multiple plugs/connectors and/or extension cables.
  - Do not touch or hold the appliance plug with wet hands → **Risk of electric shock.**
  - Never pull the appliance plug out of the socket by its cable.
  - Do not damage the mains lead → **Risk of electric shock.**
- Operation**
- Only load the dryer as recommended in the programme descriptions (*Programmes/fabrics*, Page 1 and *Programme overview*, Page 7) . Check the contents before you switch the dryer on.
  - Do not use the dryer if the laundry has been in contact with solvents, oil, wax, grease or paint (e.g. hair styling products, nail varnish remover, stain remover, cleaning solvent, etc.) → **Risk of fire/explosion.**
  - Dust (e.g. coal dust, flour) poses a danger: Do not use the dryer → **Risk of explosion**
  - Do not put laundry containing foam material/rubber in the dryer → elastic material may be destroyed and the dryer may be damaged due to possible deformation of the foam material.
  - Light things, such as long hair, may be sucked into the air inlet of the dryer → **Risk of injury.**
  - Switch off the dryer once the programme has ended.
  - The distilled water/water from condensation is not drinking water and may be contaminated with fluff.
- Defect**
- Do not use the dryer if it is defective or if you suspect that it is. Repairs must only be carried out by the after-sales service.
  - Do not use the dryer if the mains cable is defective. To avoid danger, only have the defective mains cable replaced by the after-sales service.
- Spare parts**
- Only use genuine spare parts and accessories for safety reasons.
- Disposal**
- Dryer: Pull out the appliance plug, **then** cut off the mains cable from the appliance. Dispose of the appliance at a municipal waste disposal facility.
  - Packaging: Keep all packaging out of reach of babies and children → **Risk of suffocation.**
  - Heat exchangers contain a fluorinated greenhouse gas covered by the Kyoto protocol (R407C) → Dispose of this properly. Capacity: 0.315 kg.
  - All materials are environmentally sound and can be reused. Dispose of in an environmentally-responsible manner.

**!** Observe the safety instructions on page 13.



### Tumble dryer

### Instruction manual

You must read this instruction manual and the **Installation and maintenance instructions** before using the dryer.

en

# Your dryer

**Congratulations** – you have chosen to buy a modern, high-quality Siemens domestic appliance.

A distinctive feature of the condensation dryer with heat pump and automatic cleaning of the heat exchanger is its low energy consumption.

Every dryer which leaves our factory is carefully checked to ensure that it functions correctly and is in perfect condition.

Should you have any questions, our after-sales service will be pleased to help.

## Environmentally-responsible disposal

Dispose of packaging in an environmentally-responsible manner.

This appliance is designated according to European directive 2002/96/EC which governs waste electrical and electronic equipment - WEEE).

The directive provides an EU-wide framework for the return and recycling of used appliances.

For further information about our products, accessories, spare parts and services, please visit: [www.siemens-home.com](http://www.siemens-home.com)

## Contents

	Page
■ Preparation	2
■ Control panel	2
■ Drying	3/4
■ Display panel and buttons	5
■ Notes on laundry	6
■ Overview of programmes	7
■ Important Information	8
■ Consumption rates	9
■ Normal noises	10
■ What to do if ... / After-sales service	11/12
■ Safety instructions	13

## Intended use

- For domestic use only.
- Only to be used for drying fabrics that have been washed with water.



*Do not leave children unsupervised near the dryer. Keep pets away from the dryer. The dryer can be operated by children 8 years old and older, by persons with reduced physical, sensory or mental abilities and by persons with insufficient experience or knowledge if they are supervised or have been instructed in its use by a responsible adult.*

## Programmes / Fabrics

Detailed overview of the programmes and fabrics → Programme overview, Page 7.

Observe the care information on the care label.

Dryness level, timer programming and options can be individually selected depending on the selected programme and the progress of the programme.

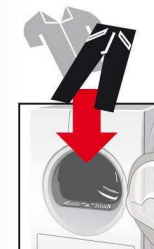
<b>Cottons</b>	Hard-wearing fabrics
<b>Easy-Care</b>	Fabrics made from synthetic or blended fabrics
<b>Mixed Fabrics</b>	A mixed load of fabrics made of cotton or synthetic fabrics
<b>Shoes in basket</b>	Shoes
<b>Wool in basket</b>	Hand or machine-washable fabrics made of wool or containing wool
<b>Towels</b>	Terry-towelling laundry e.g. towels and bathrobes
<b>Timed Progr. Warm</b>	All types of fabric except for wool and silk
<b>Shirts Business</b>	Shirts and blouses made of cotton and blended fabrics
<b>Downs</b>	Cushions and quilts
<b>Outdoor</b>	Weatherproof and outdoor clothing with a membrane coating and water-repellent fabrics
<b>Super 40'</b>	Synthetic fibres, light cotton or mixed fabrics
<b>Dark Wash Jeans</b>	Fabrics made from jeans/denim
<b>Blankets</b>	Large quilted fabrics containing synthetic fibres
<b>Lingerie</b>	Very delicate synthetic, cotton or blended fabrics

1

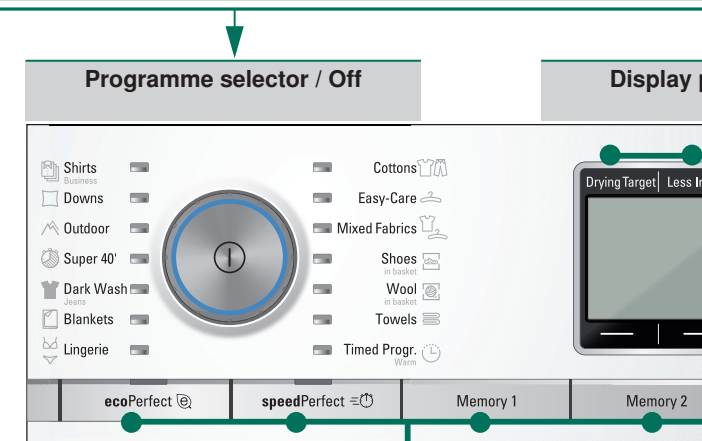
## Preparation Installation → Installation and main



Never start  
Inform you



The dryer is switched on and off by pressing the button in the centre of the programme selector. Select the programme by turning the outer ring on the programme selector (the selector can be turned in both directions). The selected programme is displayed.



<b>ecoPerfect</b>	Energy-saving programme sequence
<b>speedPerfect</b>	Accelerated programme sequence
<b>Memory 1</b>	Saves or calls individual settings
<b>Memory 2</b>	
<b>Start/Pause</b>	Starts or pause the programme

<b>Change the functions in the</b>	
<b>Drying Target</b>	C/
<b>Less Ironing</b>	Redu
<b>Finish in</b>	Time
<b>Options</b>	Sp
<b>Basic Settings 3 sec.</b>	end s

2

Do not use the dryer if it is damaged. Contact your after-sales service.

Make sure your hands are dry. Hold the plug only.

**Inspect the dryer**

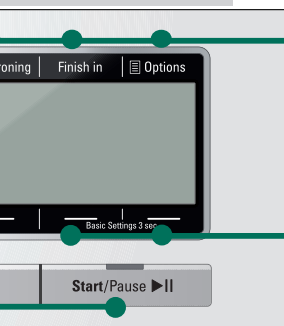
**Connect the mains plug**

**Sort the laundry**

Remove all items from pockets. Check for cigarette lighters. The drum must be empty prior to loading. See programme overview on page 7.

**Open the door/load the laundry/press the programme selector/set the programme**

Control panel / Buttons



**Close the door**

Start/Pause ►||

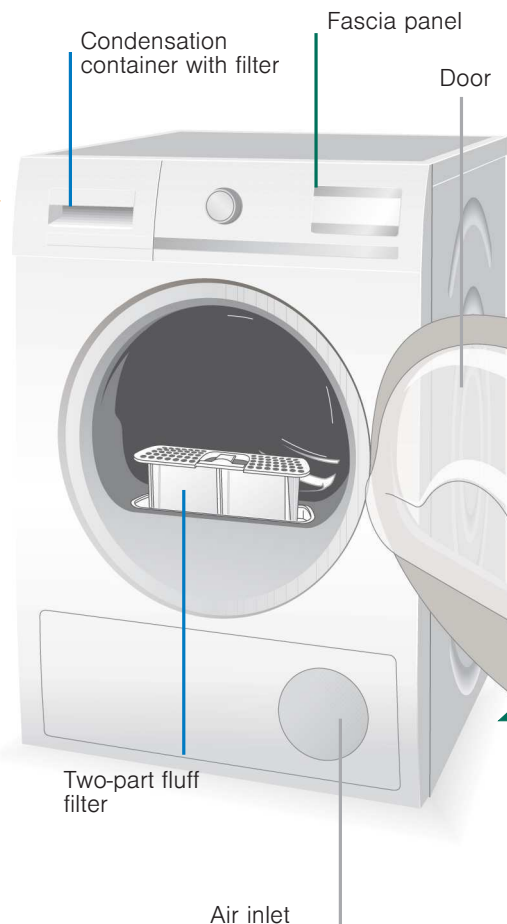
**Select the Start/Pause ►|| button**

Control display using the buttons

Ironboard Dry Extra, C/board Dry, Iron Dry  
The ironing function can be set up to 120 minutes  
Childlock  
Spin Speed, Adjust drying level, low heat  
signal, button signal, auto power-off and Language

Further information can be found on Page 5

# Drying



1

2

3

# Drying



7



6

## Empty the condensation container

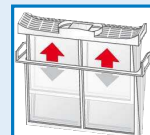
Empty the container **after each** drying cycle, and not during the cycle.

1. Remove the container, holding it level.
  2. Pour out the condensation. Push the container back in until it clicks into place.
- You must also observe the → *Installation and maintenance instructions*, Page 3.

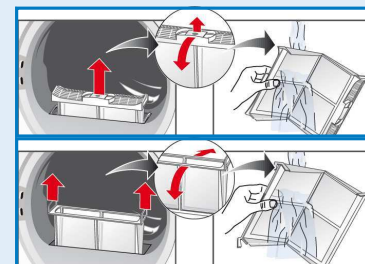
## Clean the fluff filters

**i** Clean fluff filters reduce energy consumption.

The fluff filter consists of two parts. Clean the inner and outer fluff filter **after every** drying cycle.



1. Open the door. Remove fluff from the door/door area.
2. Pull out the inner and outer fluff filter and open them out.
3. Remove any fluff, rinse both fluff filters under running water and dry thoroughly.
4. Fold the fluff filters closed, put them back together and reinsert into the appliance.



5

## Remove the laundry and switch off the dryer

4

## End of the programme ...

### Interrupt the programme

1. Open the door or press the **Start/Pause ►||** button; the drying cycle is cancelled.
2. Add or remove laundry and close the door.
3. If required, select a new programme and additional functions. Press the **Start/Pause ►||** button. The **Finish in** time is updated after a few minutes.

# Display panel and buttons

## Display panel

- Please clean lint filter** Clean the fluff filters → *Page 4*.
- Please empty condensate container** Empty the condensation container → *Page 4* and/or clean the filter in the condensation container → *Installation and maintenance instructions, Page 3*.
- Heat exchanger is being rinsed** Automatic cleaning of the heat exchanger. Do not empty the condensation container while this is displayed.

## Buttons

- Drying Target** Select the dryness level (e.g. C/board Dry) or the drying time (20 mins up to 3 hrs: 30 mins., depending on the model and programme).  
 **C/board Dry Extra:** For laundry with thick, multi-layered parts.  
 **C/board Dry:** For single-layered laundry.  
 **Iron Dry:** The condition of the laundry means it is suitable for ironing (iron clothes in order to avoid creases).
- Less Ironing** After the programme finishes, the drum moves at regular intervals to prevent creases. Automatic reduced ironing function can be set in 30-minute intervals up to 120 minutes. The standard setting for each programme is 60 minutes.
- Finish in** When a programme is selected, the anticipated drying time for the maximum load is displayed. While drying, the moisture sensors detect the actual load and correct the programme length. This is shown in the display by jumps in the **Finish in** time. The **Finish in** time can be delayed in one-hour steps, up to a maximum of 24 hours. Press the **Finish in** button repeatedly until the required number of hours is displayed (h=hour).  
 **Childlock:** Activate/Deactivate → Start programme, press and hold the **Finish in** button above the display panel for 5 seconds.
- Options** **Spin Speed;** **Adjust drying level;** **low heat**  
 *Depending on the selected programme, it may not be possible to select individual options.*  
 **Spin Speed:** The spin speed that was used for the spin in the washing machine → used exclusively to display the anticipated drying time (**Finish in** time) more precisely.  
 **Adjust drying level:** The drying result (e.g. C/board Dry) can be increased in three stages (+1 - max. +3); exception: Timer programme → default setting = 0. After one programme has been finely adjusted, the setting is retained for the others.  
 **low heat:** Reduced temperature for delicate fabrics e.g. polyacrylic, polyamide or elastane, with a longer drying time.
- ecoPerfect** To save energy during a prolonged drying time.
- turboPerfect** For drying in a shorter time at a higher level of energy consumption.
- Memory 1/2** For saving individual programme settings that are used frequently. Use the programme selector to select the required programme. Press and hold the **Memory 1/2** button for 3 seconds until the required programme has been saved.  
To select the saved programme, briefly press the **Memory 1/2** button. The programme that is called from **Memory 1 or 2** is displayed on the display panel.
- Basic Settings 3 sec.** **end signal, button signal, auto power-off and Language.** Press and simultaneously hold both **Basic Settings 3 sec.** buttons for 3 seconds, in order to access the menu.  
**end signal/button signal:** The signal volume level can be selected: off - quiet - medium - loud - very loud.  
**auto power-off:** Activate/deactivate by pressing the **Basic Settings 3 sec.** buttons. The dryer automatically switches off, depending on your selection, after 15, 30 or 60 minutes. The setting is active after **Less Ironing** or after the programme ends.  
**Language:** Select the required language.

# Information on laundry ...



## Labelling of fabrics

### Follow the manufacturer's care information.

- Suitable for tumble drying
- Dry at normal temperature.
- Dry at low temperature.
- Do not tumble dry.

### Do not tumble-dry the following fabrics:

- Non-breathable fabrics (e.g. rubber-coated).
- Delicate materials (silk, curtains made from synthetic material) → these may crease.
- Oil-stained laundry.



## Drying tips

- To ensure a consistent drying result, sort the laundry by fabric type and drying programme.
- Always dry very small fabrics (e.g. baby socks) together with large items of laundry (e.g. towels).
- Close zips, hooks and eyelets, and button up covers.  
Tie cloth belts, apron strings, etc. together or use a laundry bag.
- Do not over-dry easy-care laundry → Risk of creasing.  
Allow laundry to finish drying in the air.
- Do not iron laundry immediately after drying; fold items up and leave for a while → residual moisture will then be distributed evenly.
- Knitted fabrics (e.g. T-shirts, jerseys) often shrink slightly the first time they are tumble-dried. → Do not use the **C/board Dry Extra** programme.
- Starched laundry is not always suitable for dryers → starch leaves behind a coating that reduces the drying effect.
- When washing laundry that is to be tumble-dried afterwards, use the correct amount of fabric softener as specified in the manufacturer's instructions.
- With a small load, use the Timed programme.

## Environmental protection / Energy-saving tips

- Before drying, spin the laundry in the washing machine → the higher the spin speed, the shorter the drying time will be, thus less energy is consumed.  
Also spin easy-care laundry.
- Use the maximum recommended capacity, but do not exceed it → *Programme overview, Page 7*.
- Make sure the room is well ventilated during drying.
- Clean the fluff filters after every drying cycle → *Cleaning the fluff filters, Page 4*.
- Keep the supply of cool air unobstructed → Do not cover or block the air inlet.

# Overview of Programmes → Refer to the table of consumption rates on Page 9 and the notes on Page 6.

→ Sort the laundry according to type of textile and fabric. Fabrics must be suitable for tumble drying  
 → Dryness levels can be individually selected → Cboard Dry Extra, Cboard Dry and Iron Dry (depending on the model and programme). Degree of dryness can be finely adjusted (depending on the programme). Multi-layered fabrics require a longer drying time than single-layered items of clothing.  
 Recommendation: Dry separately.

Programmes	Max.	Type of Fabric	Options and Notes
Cottons	8 kg/ 5 kg*	Hard-wearing fabrics, boil-resistant fabrics made of cotton or linen	
Easy-Care	3.5 kg	Fabrics made from synthetic or blended fabrics	
Mixed Fabrics	3.5 kg	A mixed load of fabrics made of cotton and synthetic fabrics	
Shoes in basket	1 pair	Shoes	Use with separate basket only → see the woollens basket description.
Wool in basket	1 kg	Hand or machine-washable fabrics made of wool or containing wool	Use with separate basket only → see the woollens basket description.
Towels	3.5 kg	Terry-towelling laundry e.g. towels and bathrobes	
Timed Progr. Warm		All types of fabric except for wool and silk	For pre-dried, multi-layered fabrics or small, individual items of laundry. Also for subsequent drying.
Shirts Business	1.5 kg	Shirts and blouses made of cotton and blended fabrics	Creasing is reduced. Not completely dried.
Downs	1.5 kg	Cushions and quilts	Dry individually.
Outdoor	2 kg	Weatherproof and outdoor clothing with a membrane coating and water-repellent fabrics	Particularly gentle.
Super 40'	2 kg	Synthetic fibres, light cotton or mixed fabrics	Easy-to-dry textiles.
Dark Wash Jeans	6 kg	Fabrics made from jeans/denim	
Blankets	2 kg	Large quilted fabrics containing synthetic fibres	No down filling.
Lingerie	2 kg	Very delicate synthetic, cotton or blended fabrics	

\*reduced load for additional speedPerfect function

9306 / 9000811901



Siemens Electrogeräte GmbH  
 Carl-Wery Str. 34  
 81739 München/Deutschland

WT48Y780EU

## Important information...

Your dryer is designed to be particularly energy efficient. Its technical features include a refrigeration circuit, which uses energy efficiently in a similar way to a refrigerator. The dryer's heat exchanger is cleaned automatically during drying. The fluff filters and filter in the condensation container must be cleaned regularly.



Never operate the dryer without the fluff filters or the filter in the condensation container.

### Fluff filters

During drying, fluff and hair from the laundry is trapped by the fluff filter. A blocked fluff filter may impair the heat exchange process.

The fluff filters must therefore be cleaned after every drying cycle.

Rinse regularly under running water → Page 4.

When cleaning the fluff filter, make sure that no foreign material (down, filling material) enters the air duct opening. If necessary, clean the drum beforehand with a vacuum cleaner. If foreign material should still enter the air duct → call the after-sales service.

### Filter in the condensation container

The filter in the condensation container cleans the condensation. This condensation is required for the automatic cleaning process. The filter should be cleaned regularly under running water. Empty the condensation container before cleaning the filter → *Installation and maintenance instructions, Page 3.*

### Fabrics

Do not dry any fabrics that have come into contact with solvents, oil, wax, grease or paint: e.g. hair styling products, nail varnish remover, stain remover, cleaning solvent, etc. Empty all pockets.

Do not dry non-breathable fabrics.

Avoid drying laundry items that produce a lot of fluff.

Woollens should be refreshed or dried using the woollens programme only.

## Consumption rates

Fabrics/programmes	Residual moisture in the fabrics after spinning		Drying time**	Energy consumption**
<b>👕 Cottons 8 kg</b>				
🗲 C/board Dry*	1400 rpm	50 %	162 min	1.44 kWh
	1000 rpm	60 %	186 min	1.71 kWh
	800 rpm	70 %	210 min	1.98 kWh
👚 Iron Dry*	1400 rpm	50 %	118 min	1.06 kWh
	1000 rpm	60 %	142 min	1.32 kWh
	800 rpm	70 %	166 min	1.59 kWh
<b>👚 Easy-Care 3.5 kg</b>				
🗲 C/board Dry*	800 rpm	40 %	51 min	0.46 kWh
	600 rpm	50 %	62 min	0.55 kWh

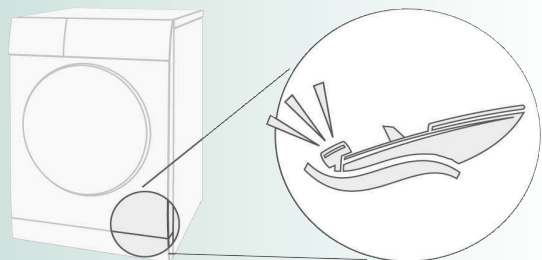
\* Programme setting for testing in accordance with applicable standard EN61121.  
 \*\* The values may differ from those specified, depending on the type of fabric, composition of laundry to be dried, residual moisture in the fabric and the amount of laundry being loaded.

Fabrics/programmes	Option	Drying time	Annual energy consumption
<b>👕 Cottons 8 kg / 4 kg*</b>			
🗲 C/board Dry	ecoPerfect @***	146 min / per cycle	213 kWh / per year

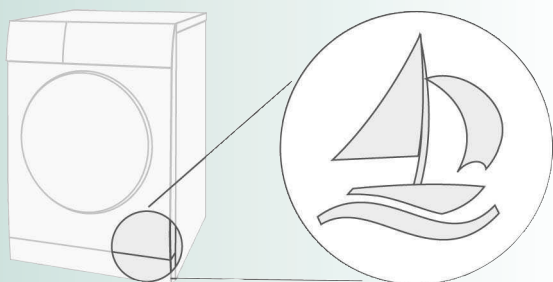
\*\*\* Programme setting for testing and energy labelling in accordance with Directive 2010/30/EU.

## Normal noises

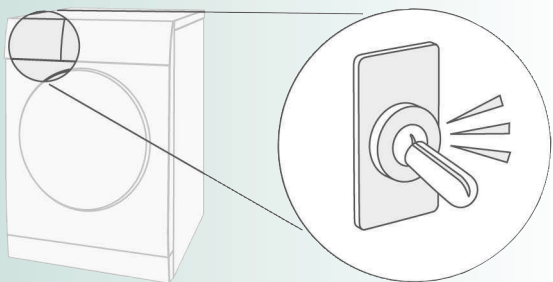
During drying, the compressor and the pump generate some noise which is entirely normal.



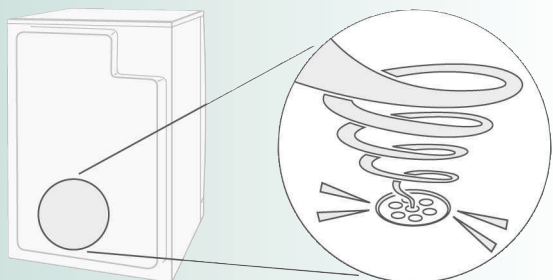
*The compressor in the dryer may occasionally generate a humming noise. The volume and pitch of this may vary depending on the selected programmes and the progress of the drying.*



*The compressor in the dryer is ventilated from time to time, which creates a whirring sound.*



*The automatic cleaning process causes a clicking noise.*



*The process of pumping the condensation into the condensation container generates pumping noises.*

## What to do if ...



If you cannot rectify a fault yourself (e.g. by switching the dryer off/on), please contact our after-sales service.

We will always find an appropriate solution and will avoid unnecessary visits by engineers. Trust the expertise of the manufacturer and rest assured that the repair will be carried out by trained service technicians using original spare parts.

The contact details of your local **after-sales service** can be found in the enclosed after-sales service directory:

– **GB** 0844 8928999 (Calls from a BT landline will be charged at up to 3 pence per minute.

A call set-up fee of up to 6 pence may apply.)

– **IE** 01450 2655 (0.03 € per minute at peak. Off peak 0.0088 € per minute.)


When contacting the after-sales service, please specify the product number (E-Nr.) and production number (FD) of your appliance(see inside of door).

Switch the dryer off using the programme selector and unplug the mains plug from the socket.

- **Please empty condensate container** is displayed. Emptying the condensation container → *Page 4*. Press any button. Press the **Start/Pause** ►|| button again.
- **Please empty condensate container** is displayed and the drying cycle is interrupted. Is the filter in the condensation container dirty? → Clean the filter in the condensation container → *Installation and maintenance instructions, Page 3*.
- **Please clean lint filter** is displayed. Clean the fluff filters → *Page 4*. Press the **Start/Pause** ►|| button again.
- Dryer does not start. Has the **Start/Pause** ►|| button been pressed? Door closed? Ambient temperature greater than 5 °C?
- Water is leaking out. Make sure the dryer is level. Push the condensation container back in until it locks fully into place.



## What to do if ...

- Drying result was not achieved (laundry too damp). Warm laundry feels damper than it really is.  
The selected programme does not suit the load. Use another drying programme or, in addition, select the time programme → *Programme overview, Page 7*.  
Use the «  Adjust drying level » option → *Page 5*.  
Thin layer of limescale on the moisture sensors?  
Clean the moisture sensors → *Installation and maintenance instructions, Page 2*.  
Programme termination, e.g. condensation container full, mains power supply failure, door open or maximum drying time reached.

---

- Drying time too long. Clean the fluff filters under running water → *Page 4*.  
Insufficient supply of air → Ensure that air can circulate.  
Air inlet may be obstructed? Clear the inlet → *Installation and maintenance instructions, Page 1*.  
Ambient temperature higher than 35 °C → Ventilate the room.

---

- The humidity in the room increases significantly. Make sure the room is sufficiently ventilated.

---

- **Heat exchanger is being rinsed** is displayed in the display panel. Not an error. Automatic cleaning of the heat exchanger. Do not empty the condensation container during the cleaning process.

---


- Power failure. As a result of a power failure, the programme is cancelled. If the laundry is still too damp: Switch on the appliance and restart the programme.

---

- Other intermittent noises and vibrations. Normal noises → *Page 10*.

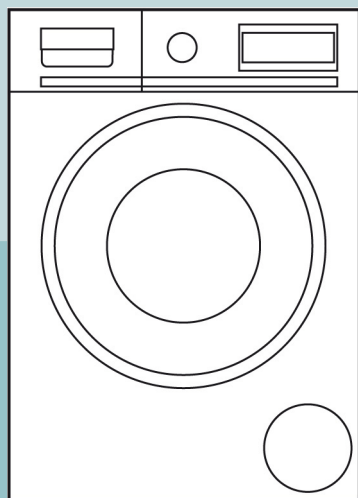
## Safety instructions



- Emergency**
  - Pull the appliance plug out of the socket immediately or disconnect the fuse.
- ONLY use the dryer...**
  - in rooms inside the house.
  - to dry fabrics.
- The dryer must NEVER...**
  - be used for purposes other than those described above.
  - be modified in terms of its technology or properties.
- Hazards**
  - The dryer must not be used by children or persons who have not been instructed in its use.
  - Do not leave children unsupervised near the dryer.
  - Keep pets away from the dryer.
  - Remove all objects from pockets, and lighters in particular → **Risk of explosion.**
  - Do not lean or sit on the door → **Risk of tipping.**
  - Open the door carefully. Hot steam may escape. Fabrics and drum may be hot → **Risk of burns.**
- Installation**
  - Secure loose leads or hoses, otherwise there is a **risk of tripping.**
  - Below 0 °C there is a possibility of frost damage.
- Mains connection**
  - Connect the dryer to an AC earthed socket according to specifications, otherwise it cannot be guaranteed that the appliance is completely safe.
  - The cable cross-section must be sufficient.
  - Only use earth-leakage circuit breakers with the following symbol: 
  - The appliance plug and socket must be compatible.
  - Do not use multiple plugs/connectors and/or extension cables.
  - Do not touch or hold the appliance plug with wet hands → **Risk of electric shock.**
  - Never pull the appliance plug out of the socket by its cable.
  - Do not damage the mains lead → **Risk of electric shock.**
- Operation**
  - Only load the dryer as recommended in the programme descriptions (*Programmes/fabrics, Page 1* and *Programme overview, Page 7*). Check the contents before you switch the dryer on.
  - Do not use the dryer if the laundry has been in contact with solvents, oil, wax, grease or paint (e.g. hair styling products, nail varnish remover, stain remover, cleaning solvent, etc.) → **Risk of fire/explosion.**
  - Dust (e.g. coal dust, flour) poses a danger: Do not use the dryer → **Risk of explosion**
  - Do not put laundry containing foam material/rubber in the dryer → elastic material may be destroyed and the dryer may be damaged due to possible deformation of the foam material.
  - Light things, such as long hair, may be sucked into the air inlet of the dryer → **Risk of injury.**
  - Switch off the dryer once the programme has ended.
  - The distilled water/water from condensation is not drinking water and may be contaminated with fluff.
- Defect**
  - Do not use the dryer if it is defective or if you suspect that it is. Repairs must only be carried out by the after-sales service.
  - Do not use the dryer if the mains cable is defective. To avoid danger, only have the defective mains cable replaced by the after-sales service.
- Spare parts**
  - Only use genuine spare parts and accessories for safety reasons.
- Disposal**
  - Dryer: Pull out the appliance plug, **then** cut off the mains cable from the appliance.  
Dispose of the appliance at a municipal waste disposal facility.
  - Packaging: Keep all packaging out of reach of babies and children → **Risk of suffocation.**
  - Heat exchangers contain a fluorinated greenhouse gas covered by the Kyoto protocol (R407C) → Dispose of this properly. Capacity: 0.315 kg.
  - All materials are environmentally sound and can be reused.  
Dispose of in an environmentally-responsible manner.



Observe  
the safety instructions  
on page 13.



**Tumble dryer**

**Instruction manual**

**en**



You must read this instruction manual and the  
**Installation and maintenance instructions** before  
using the dryer.

**SIEMENS**