



# Safety instructions

– Read and follow the operating and installation instructions and all other information enclosed with the washing machine.  
– Retain documents for subsequent use.

**Risk of electric shock**  
– Never pull out the mains plug by tugging the power cord.  
– Never insert/pull out the mains plug with damp hands.

**Risk of death**  
For worn-out appliances:  
– Pull out the mains plug.  
– Sever the power cord and discard together with the plug.  
– Destroy the lock on the washing machine door.  
This will prevent children from locking themselves and risking their lives.

**Risk of suffocation**  
– Keep packaging, plastic film and packaging parts out of the reach of children.

**Risk of poisoning**  
**Risk of explosion**  
– Keep detergents and care products out of the reach of children.  
– Items of laundry pretreated with cleaning agents containing solvents, e.g. stain remover/cleaning solvents may lead to an explosion after being loaded into the washing machine.  
Rinse items of laundry thoroughly by hand beforehand.

**Risk of injury**  
– Washing machine door may become very hot.  
– Take care when draining hot detergent solution.  
– Do not climb onto the washing machine.  
– Do not lean on the open washing machine door.  
– Do not touch the drum in case it is still spinning.  
– Be careful when opening the detergent drawer while the machine is in operation.

# Important information

**Preparing/Protecting the laundry and the machine**  
– Empty pockets.  
– Look out for metal items (paperclips, etc.).  
– Wash delicates in a net/bag (tights, curtains, underwired bras).  
– Fasten zips, do up any buttons.  
– Brush sand out of pockets and collars.  
– Remove curtain fittings or in a laundry bag.

**Before washing for the first time**  
Do not load any laundry into the machine. Turn on the tap. Add the following to compartment II:  
– approx. 1 litre water  
– detergent (dosage according to the manufacturer's instructions for light soiling and the appropriate degree of water hardness)  
Set the programme selector to **Drum Clean** 40 °C and select **Start/Reload**. At the end of the programme, turn the programme selector to **Off**.

**Laundry with different degrees of soiling**  
Light Wash new items separately.  
Do not prewash.  
If required, pretreat stains. Select **Prewash** additional function.  
Heavy Load less laundry.  
If required, pretreat stains. Select **Prewash** additional function.

**Soaking** Load laundry of the same colour.  
Pour soaking agent/detergent into compartment II according to the manufacturer's instructions. Set **Cottons Power 60** 30 °C programme and select **Start/Reload**. After approx. 10 minutes, select **Start/Reload**. After the required soaking time, reselect **Start/Reload** if the programme is to be continued or change the programme.

**Starching** Laundry must not be treated with fabric softener.  
Starching is possible in all washing programmes if liquid starch is used. Add starch to the fabric softener compartment in accordance with the manufacturer's instructions.

**Dyeing/bleaching**  
Dye in small quantities only. Salt can corrode stainless steel.  
Observe the dye manufacturer's instructions.  
Do **not** bleach laundry in the washing machine.

# Care

**Machine housing, control panel**  
– Wipe with a soft, damp cloth.  
– Do not use any abrasive cloths, scourers or cleaning agents (stainless steel cleaners).  
– Immediately remove laundry and cleaning agent residues.  
– Do not clean the appliance with a water jet.

**Clean the detergent drawer ...**  
... if it contains detergent or fabric softener residues.  
1. Pull out the drawer up to the stop position, press down the latch on the insert and remove the drawer completely.

2. Remove insert: pull insert upwards with finger.  
3. Clean the detergent dispenser and the insert with water and a brush.  
4. Refit the insert and secure in place (the cylinder should fit over the guide pin).  
5. Insert the detergent drawer.  
6. Leave the detergent drawer open so that residual water can evaporate.

**Drum**  
Leave the washing machine door open after washing so that the drum can dry.  
Rust stains – use chlorine-free cleaning agent, not steel wool.

**Descaling** No laundry in the machine!  
This is not necessary if the detergent is dosed correctly. However, if it is necessary, follow the instructions of the descaler manufacturer. Suitable descaling products can be purchased from our website or customer service. →page 13

# Information on the display

	Please close the door immediately because of rising water level. In pause status  and  are displayed alternately.
	Door is locked due to safety reasons (water level and/or temperature are too high); In pause status,  and  are displayed alternately. If you need to open the door, wait for the temperature to drop or drain the water (e.g. select <b>Spin</b> programme).
	Door cannot be locked/unlocked due to high temperature of the door lock. Wait a moment and try again.
	<b>Flashing</b> (no water supply): Tap turned on? Inlet filter blocked ? Clean filter. →page 11 Supply hose kinked or blocked ?
	<b>Flashing:</b> The washing machine detected the unbalance in the drum and it cannot be adjusted. To protect the washing machine, the maximum spin speed cannot be reached. The washing solution will not be removed completely after spinning. – Wash small and large items of laundry together. Clean drain pump; →page 11 outlet pipe/drainage hose blocked.
	Switch off the appliance, wait 5 seconds and switch it back on. If the display appears again, call the customer service →page 13
other displays	

# Maintenance

**Drain pump blocked**  
Set programme selector to **Off**, pull out the mains plug.

- Open service flap.
- Take the drainage hose out of the holder.
- Remove sealing cap, allow detergent solution to flow out. Have a suitable container ready. Push up the closing cap and place the drain hose back in its holder.
- Carefully unscrew the pump cover (Caution! residual water). Clean the interior, pump cover thread and pump housing (fan impeller in the detergent-solution pump must rotate).
- Reinsert and screw on pump cover. Handle should be vertical.
- Close the service flap.

To prevent unused detergent from flowing into the outlet during the next wash: Pour 1 litre of water into dispenser II and start the **Spin** or **Empty** programme.

**Drainage hose on the siphon blocked**  
Set programme selector to **Off**, pull out the mains plug.

- Loosen hose clip, carefully remove drainage hose (Caution! residual water).
- Clean drainage hose and siphon spigot.
- Re-attach drainage hose and secure connection point with hose clip.

**Filter blocked in water inlet hose** depending on model  
**Risk of electric shock!**  
Do not immerse Aqua-Stop safety device in water (contains electric valve).

- Release water pressure in the supply hose:
- Turn off the tap!
  - Select any programme (except **Rinse**, **Spin** or **Empty**).
  - Press **Start/Reload** button. Leave programme for approx. 40 seconds.
  - Set programme selector to **Off**. Pull out the mains plug.  
Clean the filter:
  - Disconnect the hose from the water tap.  
Clean filter with small brush.  
**and/or** for standard and Aqua-Secure models: remove hose from the rear of the appliance.  
Take out filter with pliers and clean.
  - Connect the hose and check for leaks.

# What to do if ...

- Water is leaking out. – Fit/refit drainage hose correctly.  
– Tighten the screw connection of the supply hose.
- No water supply. Detergent not dispensed. – **Start/Reload** not selected?  
– Water tap not turned on?  
– Supply hose filter blocked? Clean the filter. →page 11  
– Supply hose kinked or trapped?
- Washing machine door cannot be opened. – Safety function active. Programme stopped? →page 4  
– (Rinse stop = no final drain/spin) selected? →page 5  
– Can be opened by emergency release only. →page 13
- Programme does not start. – **Start/Reload** or **(Finish in)** time selected?  
– Washing machine door closed?
- Detergent solution is not drained. – Clean the drain pump. →page 11  
– Clean waste pipe and/or drainage hose.
- Water not visible in the drum. – Not a fault - water below the visible area.
- Spin result not satisfactory. – Wash small and large items of laundry together.  
– **Easy Iron** selected? →page 6  
– Speed selected too low? →page 5
- Spin cycle performed several times. – Not a fault - unbalanced load detection system adjusts the imbalance.
- Compartment not rinsed out completely. – Remove the insert. Clean detergent drawer and insert. →page 10
- Odour formation in the washing machine. – Run the **Drum Clean** 90 °C programme without laundry.  
– Use standard detergent.
- Foam escapes from the detergent drawer. – Too much detergent used?  
Mix 1 tablespoon of fabric softener with ½ litre of water and pour into compartment II in the detergent drawer.  
– Reduce detergent dosage for the next wash cycle.
- Excessive noise, vibrations and "wandering" during spin cycle. – Are the appliance feet fixed?  
Secure the appliance feet. →Installation instructions, page 5  
– Transport bolts removed?  
Remove transport bolts.  
Installation instructions, page 3
- Display panel/indicator lamps do not light up while the appliance is running. – Power failure/off? Interrupted programme will be resumed when power returns.  
– Circuit breaker tripped? Reset the circuit breaker/change the fuse.  
– If the fault occurs repeatedly, call the customer service.
- Programme sequence longer than usual. – Not a fault - unbalanced load detection system adjusts imbalance by repeatedly distributing the laundry.  
– Not a fault - foam detection system active - adds an additional rinse cycle.
- Detergent residues on the laundry. – Occasionally, phosphate-free detergents contain water-insoluble residues.  
– Select **Rinse** or brush the laundry after washing.
- If you cannot correct a fault yourself or a repair is required:  
– Turn the programme selector to **Off** and pull the mains plug out of the socket.  
– Turn off the tap and call the customer services. →page 13

# Emergency release e.g. in the event of power failure

Interrupted programme will be resumed when power returns. However, if the laundry has to be removed, the washing machine door can be opened as follows:  
**Risk of scalding.**  
The detergent solution and laundry may be hot. If possible, leave it to cool down.  
Do not reach into the drum if it is still rotating.  
Do not open the washing machine door if water can be seen through the glass.  
– Set the programme selector to **Off** and disconnect the mains plug.  
– Drain the detergent solution. →page 11  
– Pull the emergency release with a tool and release. The washing machine door can then be opened.

# Customer service

- If you cannot rectify the fault yourself →page 12: What to do if ..., please contact our customer service. We will always find a suitable solution and will avoid a visit from a service technician wherever possible.
- The contact details for all countries can be found in the enclosed customer service directory.
- Please give the customer service the product number (E-Nr.) and the production number (FD) of the appliance.

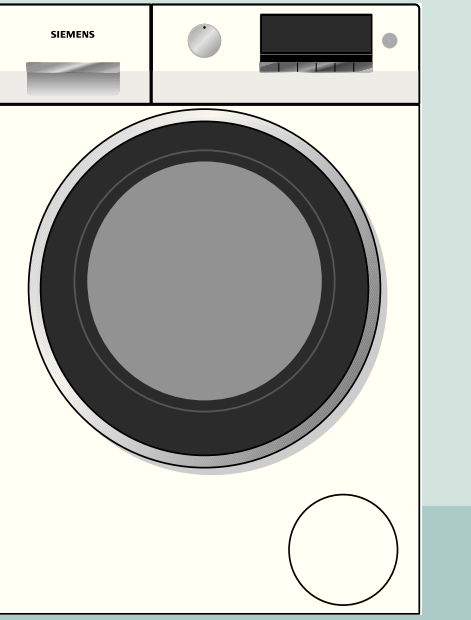
E-Nr. \_\_\_\_\_ FD \_\_\_\_\_  
Product number Production number

You will find the identification plate containing this information on the frame of the open door, and of the rating plate on the back of the appliance.

**Rely on the professionalism of the manufacturer.** Please contact us. This will ensure that the repair is carried out by trained service technicians who arrive equipped with genuine spare parts for your appliance.

# Operating instructions

**en**  
Read these instructions before switching on the washing machine.  
Also follow the separate installation and maintenance instructions.  
Follow the safety instructions on Page 8.



# Operating instructions

WM12S460IN



# Your washing machine

**Congratulations** – You have opted for a modern, high-quality domestic appliance manufactured by SIEMENS. The washing machine is distinguished by its economical use of water and energy. Each appliance which leaves our factory has been inspected thoroughly to ensure that it functions properly and is in perfect condition.

For further information about products, accessories, spare parts and services visit our web site: [www.siemens-home.com](http://www.siemens-home.com) or contact our after-sales service centres.

## Environmentally friendly waste disposal



All packaging must be disposed of in accordance with environmental guidelines. This appliance is certified in accordance with European Directive 2002/96/EEC on waste electrical and electronic equipment (WEEE). This directive provides the framework for the EU-wide collection and reuse of used appliances.

## Contents

Page

■ Intended use .....	1
■ Programmes .....	1
■ Preparation .....	2/3
■ Setting and adjusting programmes .....	3
■ Washing .....	3/4
■ Removing the laundry .....	4
■ Display information, Options, Functions .....	5/6
■ Programme overview.....	7
■ Safety instructions .....	8
■ Consumption values .....	8
■ Important information .....	9
■ Care .....	10
■ Information on the display panel.....	10
■ Maintenance .....	11
■ What to do if .....	12
■ Emergency release.....	13
■ Customer service .....	13



## Protection of the environment/Conservation tips

- Always fill the washing machine with a maximum amount of laundry for the relevant programme.
- Wash normally soiled laundry without prewash.
- Instead of the **Cottons** **Power 60** **90 °C** programme, select **Cottons** **Power 60** **60 °C** with additional function **ecoPerfect**. Comparable cleaning result with significantly lower energy consumption.
- Dose the detergent according to the manufacturer's instructions and water hardness.
- If the laundry is to be subsequently dried in a tumble dryer, select a spin speed as specified by the dryer manufacturer.

## Intended use

- For domestic use only.
- For washing machine-washable fabrics in a detergent solution.
- To be operated with cold mains water and commercially available low foam detergents and care products which are suitable for use in washing machines.



- Do not leave children unattended near the washing machine!
- The washing machine is not to be used by children or persons not familiar with the operating instructions.
- Keep pets away from the washing machine!

## Programmes

Detailed programme overview. →page 7  
The temperature and spin speed can be selected individually, irrespective of the selected programme and programme progress

<b>Cottons</b> <b>Power 60</b>	Hard-wearing textiles
<b>Synthetics</b>	Synthetics, easy-care textiles
<b>Mix</b>	Textiles made of cotton and synthetics
<b>Delicate/Silk</b>	Silk and delicate washable textiles
<b>Wool</b>	Hand and machine-washable wool or wool-rich textiles
<b>Spin</b>	Additional spin cycle
<b>Drum Clean</b>	For drum hygiene or fluff removal
<b>Empty</b>	Draining of the water inside the drum
<b>Rinse</b>	Extra rinse with spin
<b>Curtains</b>	Curtains made of cotton, linen or synthetics
<b>Jeans</b>	Jeans and dark color textiles
<b>Shirts</b>	Programme for Shirts/Blouses
<b>Kidswear</b>	Textiles for kids
<b>Hygiene</b>	Programme for allergic people and advanced hygiene
<b>Super quick 15/30 min</b>	Extra short programme

## Preparation



Correct installation according to separate installation instructions.



### Check the machine

- Never switch on a damaged machine!
- Inform your customer service!



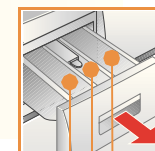
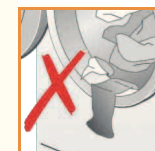
### Insert mains plug



With dry hands only!  
Only hold the plug itself!



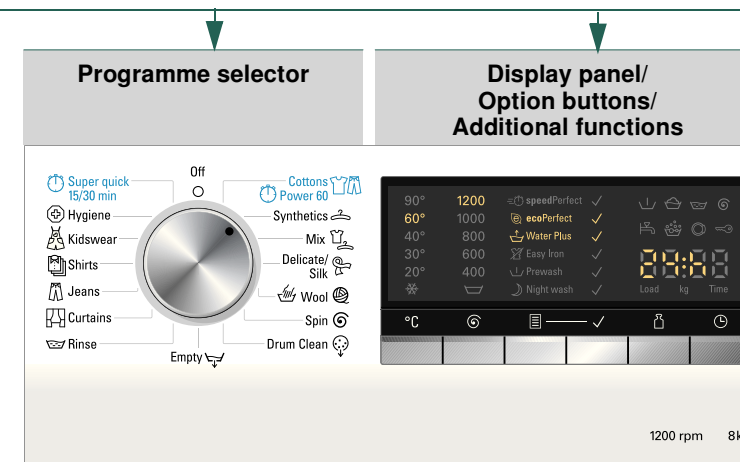
### Turn on the tap



**Compartment II:** Detergent for the main wash, water softener, bleach, stain remover

**Compartment** : Fabric softener, impregnating agent, starch

**Compartment I:** Detergent for pre-wash



Programme selector for switching the machine on and off and for selecting the programme. Can be rotated in either direction.



**Before washing for the first time,**  
wash once without any laundry →page 9

### Sorting and loading the laundry

Observe the care information provided by the manufacturer.  
Sort according to the information on the care labels.  
Sort according to type, colour, soiling and temperature.  
Remove any foreign objects - risk of rusting.  
Do not exceed the maximum load. →page 7

Observe the instructions in the important information section. →page 9  
Load both large and small items of laundry.  
Close the washing machine door. Take care not to trap any items of clothing between the loading door and rubber seal.

### Add detergent and care product

Add the appropriate dose according to:  
Amount of laundry, soiling, water hardness (ask your water supply company) and manufacturer's instructions.  
Models without insert for liquid detergent: pour liquid detergent into an appropriate dispenser and place in the drum.  
During operation: close the detergent drawer!

**i** Dilute viscous fabric softener and fabric conditioner with water.  
This prevents blockages.

### Setting and adjusting programmes

**Start/Reload**

**i** If the symbol lights up or flashes in the display panel, the childproof lock is active.  
→deactivate, page 6

For additional functions and option buttons, see the individual settings section. →page 5/6

**Select** **Start/Reload**

**i** All buttons are sensitive and a gentle tap is adequate!  
If you press and hold the option buttons, the setting options automatically scroll through.

## Washing

Detergent drawer with compartments I, II,

Drum

Control panel

Door handle



Service flap



### Removing laundry

- Open washing machine door and remove laundry.  
If (Rinse stop = no final drain/spin) is active: Select the spin speed or set programme selector to **Empty** or **Spin** .
- Select **Start/Reload**.
- Remove any foreign objects - risk of rusting.



### Turn off the tap



### Switch off

- Set Programm selector to **Off**.

### Programme ended when ...

... **Start/Reload** goes out and or (if was selected, no final spin/drain) is indicated on the display panel, the buzzer sounds. →page 6

### Change the programme ...

- If you have selected the wrong programme by mistake:
- Reselect the programme.
  - Select **Start/Reload**.

### Pause the programme ...

- Touch the **Start/Reload** button.
- Follow the instructions in the display field: when lights up and appears in the display, the door can be opened. If required, add /remove a laundry item; if and are displayed alternately, the door cannot be opened due to a high water level in drum or a high temperature.
- Touch **Start/Reload** button to continue the programme.

### ... or terminate the programme

- Programmes with high temperature:
- Cool down laundry: Select **Rinse** .
  - Select **Start/Reload**.
- Programmes at lower temperature:
- Select **Empty** or **Spin** .
  - Select **Start/Reload**.

1

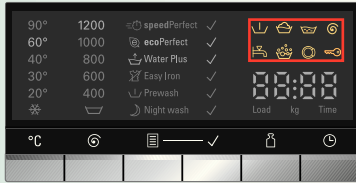
2

3

## Washing

# Display information, Options, Functions

## Display symbols



- Prewash:** On if prewash process is running.
- Washing:** On if wash process is running.
- Rinse:** On if rinse process is running.
- Spin:** On if spin process is active; If the symbol flashes → page 10
- Tap:** Flashing if tap not open or no water supply.
- Overdosage:** Foam detected. Maybe too much detergent.
- Door:** On if door can be opened.
- Childproof lock:** **On:** if childproof lock is activated.  
**Flashing:** if there is misoperation.  
Activate/deactivate childproof lock. →page 6

## Display information

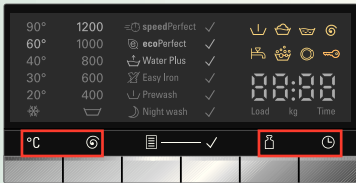


- Load,** e.g. : load of laundry, detect by machine or defined by user → page 5
- Kg,** e.g. : max. recommended for selected programme. → page 7, Programme overview
- Time,** e.g. : programme remaining time, or : Finish-in time defined by user → page 5
- PAUSE:** On if programme is in pause.
- OPEN:** On if door can be opened when programme was paused.
- -: End of programme, or
- - - -: end of programme with the setting
- : set volume of signals →page 6
- : set additional rinse cycles →page 6
- : Fault displays →page 10

Alternating display of Load information, maximum load recommendation in kg and remain time or finish in time display.

\* Example of display, may vary depending on selections.

## Option buttons



- °C (Temp):** You can change the indicated washing temperature. The maximum washing temperature which can be selected depends on the programme that has been chosen →page 7
- ⊖ (Spin):** You can change the indicated spin speed. The maximum spin speed which can be selected depends on the chosen programme. If is select, the load is held in the rinsing water.
- ⊖ (Load):** You can change loading level from **RUED** to **LESS**, **HALF** or **FULL**. The remaining time will be adapted accordingly.  
**RUED:** Remaining time defined according to the weight of loading automatically by machine.  
**LESS:** For small load quantities, select it to reduce programme duration.  
**HALF:** Select this function for washing half of the recommended max. load.  
**FULL:** Select this function for washing of the recommended max. load.
- ⌚ (Finish in):** When you select a programme, the respective programme duration is displayed. You can delay the start of the programme before it begins. The finish-in time indicates when the programme will be finished. It can be set in hour increments up to a maximum of 24h. Press and hold the **(Finish in)** button until the respective number of hours is shown (h=hour). Select **Start/Reload** .

\* You can change the spin speed and temperature beforehand and while the selected programme is running. The effects depending on the progress of the programme.

# Options, Functions

## Additional functions

See also Programme overview →page 7

Select the desired additional functions with the (**Option**) button and then activate (or deactivate) the chosen function with the (**Select**) button, e.g. select the **Prewash** function:

- For **Synthetics** programme, touch (**Option**) button, **ecoPerfect** indicator flashes.
- Touch (**Option**) button again until **Prewash** indicator flashes.
- Touch (**Select**) button. **Prewash** indicator flashes and related indicator comes on. It means the function has been preselected. If you need to deselect the function immediately, touch the (**Select**) button again.
- If no other action, the **Prewash** indicator stops flashing and comes on after several seconds. Additional function is selected successfully. **Setting of Easy Iron.** →page 6

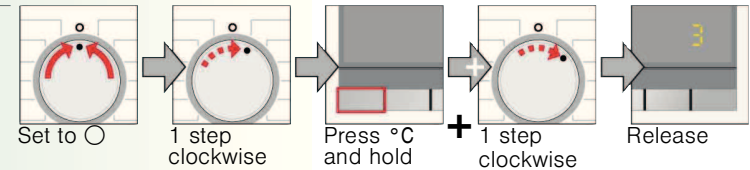
- speedPerfect** For washing in a shorter time with a washing result comparable to that of the standard programme.
- ecoPerfect** For saving energy with a washing performance comparable to that of the standard programme.
- Water Plus** Increased water level and extended wash time. For areas with very soft water or for further enhancing the washing result.
- Easy Iron** Special spin sequence with subsequent fluffing. Gentle final spin – residual moisture in the laundry increased slightly.
- Prewash** Actuate prewash. For heavily soiled, hard-wearing washing, e.g. made of cotton or linen.
- Night wash** Reduce noise of washing in night.

## Start/Reload Soaking

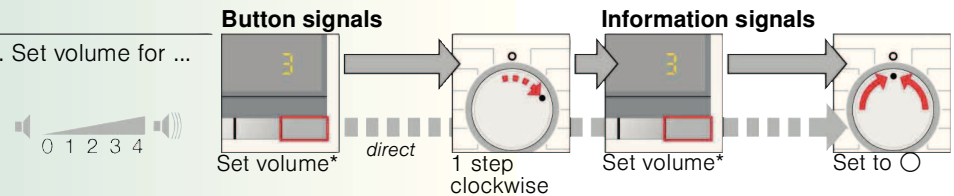
For starting or pausing the programme. Soaking function. →page 9

## Signals

1. Start signal mode



2. Set volume for ...



\*If required, set repeatedly

## Childproof lock

Programme will not be changed by accidental operation.

To activate the childproof lock:

- After the programme starts or finish in time is activated →page 5, press and hold the (**Finish in**) button for 5 seconds;
- Release when the symbol lights up. If button signal is on, an acoustic signal will be heard. When the programme ends, the **Start/Reload** indicator remains on to remind you to deactivate the childproof lock.

To deactivate the childproof lock:

- Touch the (**Finish in**) button until the symbol turns off.
- Release the button.

symbol flashes if the programme has been changed while childproof lock is activated. If the childproof lock is deactivated while the programme selector is in a different position from when the childproof lock was activated, the running programme will be halted.

# Programme overview

(see also the information on page 5, 6)



Programmes **°C** **max. (kg)** **Type of laundry**

**Additional functions; information\*\***

<b>Cottons</b>	cold - 90		Standard washing program for hard-wearing textiles made of cotton or linen.
<b>Power 60</b>	cold - 60	8,0 / 5,0 *	Program special designed for allergic people and advanced hygiene, suitable for hard-wearing textiles made of cotton or linen.
<b>Hygiene</b>	cold - 40		Program suitable for washing kidswear made of cotton or synthetic textiles.
<b>Jeans</b>	cold - 40		Program suitable for washing Jeans and other dark color textiles made of cotton or synthetic textiles.
<b>Synthetics</b>	cold - 60	3,5	Textiles made of synthetic materials or blended fabrics.
<b>Mix</b>	cold - 60		Mixed load consisting of textiles made of cotton and synthetics.
<b>Curtains</b>	cold - 40		Special designed program for curtains made of cotton, linen or synthetics.
<b>Shirts</b>	cold - 60		Suitable for Shirts/Blouses made of cotton, linen, synthetics fibres or blended fabrics.
<b>Delicate/Silk</b>	cold - 40	2,0	For delicate, washable textiles, e.g. made of silk, satin, synthetic fibres or blended fabrics.
<b>Wool</b>	cold - 40		Hand and machine-washable wool or wool-rich textiles. Especially gentle wash program to prevent shrinkage, longer program pauses (textiles rest in wash liquor) e.g. cashmere, ohair or angora. Also suited for hand washable silk.
<b>Super quick 15/30 min</b>	cold - 40 °C	3,5 / 2,0 *	Extra short program approx. 15/30 minutes, suitable for lightly soiled and small amounts of laundry.
<b>Drum Clean</b>	cold, 40, 90		Special programme for drum hygiene or fluff removal 90° = antibacterial programme, use no detergent 40° = antibacterial programme, special drum cleaning detergent can be used cold = no antibacterial programme, to remove hair or fluff from the tub.
<b>Spin</b>			Extra spin with selectable spin speed.
<b>Empty</b>		8,0	Draining of the water inside the drum, e.g. after rinse hold.
<b>Rinse</b>			Extra rinse with spin.

**i** The programmes are time-controlled for lightly soiled textiles. If textiles are heavily soiled, reduce the load and select additional function, e.g. **ecoPerfect**.

Programmes without **prewash** - pour detergent into compartment **II**; Programmes with **prewash** - divide detergent between compartments **I** and **II**.

\* Reduced load for **speedPerfect** option.

\*\* Additional function **speedPerfect** and **ecoPerfect** cannot be selected in the same time.

Siemens Electrogeräte GmbH Carl-Wery-Str.34 D-81739 Munich/Germany	WMT2S460IN	9000795261 0912
--	------------	--------------------



## Safety instructions

– Read and follow the operating and installation instructions and all other information enclosed with the washing machine.

– Retain documents for subsequent use.

**Risk of electric shock** – Never pull out the mains plug by tugging the power cord.  
– Never insert/pull out the mains plug with damp hands.

**Risk of death** For worn-out appliances:  
– Pull out the mains plug.  
– Sever the power cord and discard together with the plug.  
– Destroy the lock on the washing machine door.  
This will prevent children from locking themselves and risking their lives.

**Risk of suffocation** – Keep packaging, plastic film and packaging parts out of the reach of children.

**Risk of poisoning** – Keep detergents and care products out of the reach of children.

**Risk of explosion** – Items of laundry pretreated with cleaning agents containing solvents, e.g. stain remover/cleaning solvents may lead to an explosion after being loaded into the washing machine.  
Rinse items of laundry thoroughly by hand beforehand.

**Risk of injury** – Washing machine door may become very hot.  
– Take care when draining hot detergent solution.  
– Do not climb onto the washing machine.  
– Do not lean on the open washing machine door.  
– Do not touch the drum in case it is still spinning.  
– Be careful when opening the detergent drawer while the machine is in operation.

## Consumption values

Programme	Additional function	Load	Electricity consumption**	Water**	Programme duration**
Cottons  Power 60  20 °C	—	8.0 kg	0.23 kWh	76.3 l	2:35 h
Cottons  Power 60  30 °C	—	8.0 kg	0.37 kWh	75.0 l	2:35 h
Cottons  Power 60  40 °C	—	8.0 kg	0.99 kWh	75.5 l	2:46 h
Cottons  Power 60  60 °C*	ecoPerfect	8.0 kg	0.94 kWh	63.0 l	3:29 h
Cottons  Power 60  90 °C	—	8.0 kg	2.34 kWh	87.5 l	2:32 h
Synthetics  40 °C	speedPerfect	3.5 kg	0.56 kWh	56.0 l	1:02 h
Mix  40 °C	speedPerfect	3.5 kg	0.57 kWh	50.9 l	1:05 h
Delicate/Silk   (cold)	—	2.0 kg	0.03 kWh	28.9 l	0:39 h
Wool   (cold)	—	2.0 kg	0.02 kWh	39.0 l	0:35 h

\* Program setting with maximum spin speed for labeling testing.

\*\* The values deviate from the indicated values depending on water pressure, hardness, and inlet temperature, ambient temperature, type, amount and soiling of the laundry, detergent used, fluctuations in the power supply and selected additional functions.



## Important information



### Preparing/Protecting the laundry and the machine

- Empty pockets.
- Look out for metal items (paperclips, etc.).
- Wash delicates in a net/bag (tights, curtains, underwired bras).
- Fasten zips, do up any buttons.
- Brush sand out of pockets and collars.
- Remove curtain fittings or in a laundry bag.



### Before washing for the first time

Do not load any laundry into the machine. Turn on the tap. Add the following to compartment II:

- approx. 1 litre water
- detergent (dosage according to the manufacturer's instructions for light soiling and the appropriate degree of water hardness)

Set the programme selector to **Drum Clean** 40 °C and select **Start/Reload**. At the end of the programme, turn the programme selector to **Off**.



### Laundry with different degrees of soiling

Light		Wash new items separately. Do not prewash.
Heavy		If required, pretreat stains. Select <b>Prewash</b> additional function. Load less laundry. If required, pretreat stains. Select <b>Prewash</b> additional function.



### Soaking

*Load laundry of the same colour.*

Pour soaking agent/detergent into compartment II according to the manufacturer's instructions. Set **Cottons** **Power 60** 30 °C programme and select **Start/Reload**. After approx. 10 minutes, select **Start/Reload**. After the required soaking time, reselect **Start/Reload** if the programme is to be continued or change the programme.



### Starching

*Laundry must not be treated with fabric softener.*

Starching is possible in all washing programmes if liquid starch is used. Add starch to the fabric softener compartment in accordance with the manufacturer's instructions.



### Dyeing/bleaching

Dye in small quantities only. Salt can corrode stainless steel. Observe the dye manufacturer's instructions. Do **not** bleach laundry in the washing machine.

# Care



- Risk of electric shock! Pull out the mains plug!
- Risk of explosion! No solvents!



## Machine housing, control panel

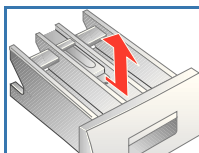
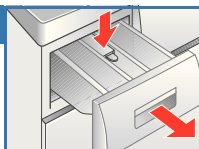
- Wipe with a soft, damp cloth.
- Do not use any abrasive cloths, scourers or cleaning agents (stainless steel cleaners).
- Immediately remove laundry and cleaning agent residues.
- Do not clean the appliance with a water jet.



## Clean the detergent drawer ...

... if it contains detergent or fabric softener residues.

1. Pull out the drawer up to the stop position, press down the latch on the insert and remove the drawer completely.
2. Remove insert: pull insert upwards with finger.
3. Clean the detergent dispenser and the insert with water and a brush.
4. Refit the insert and secure in place (the cylinder should fit over the guide pin).
5. Insert the detergent drawer.
6. Leave the detergent drawer open so that residual water can evaporate.



## Drum

Leave the washing machine door open after washing so that the drum can dry. Rust stains – use chlorine-free cleaning agent, not steel wool.



## Descaling *No laundry in the machine!*

This is not necessary if the detergent is dosed correctly. However, if it is necessary, follow the instructions of the descaler manufacturer. Suitable descaling products can be purchased from our website or customer service. →page 13

# Information on the display

	Please close the door immediately because of rising water level. In pause status  and  are displayed alternately.
	Door is locked due to safety reasons (water level and/or temperature are too high); In pause status,  and  are displayed alternately. If you need to open the door, wait for the temperature to drop or drain the water (e.g. select <b>Spin</b> programme).
	Door cannot be locked/unlocked due to high temperature of the door lock. Wait a moment and try again.
	<b>Flashing</b> (no water supply): Tap turned on? Inlet filter blocked? Clean filter. →page 11 Supply hose kinked or blocked?
	<b>Flashing:</b> The washing machine detected the unbalance in the drum and it cannot be adjusted. To protect the washing machine, the maximum spin speed cannot be reached. The washing solution will not be removed completely after spinning. - Wash small and large items of laundry together.
	Clean drain pump; →page 11 outlet pipe/drainage hose blocked.
other displays	Switch off the appliance, wait 5 seconds and switch it back on. If the display appears again, call the customer service →page 13

# Maintenance



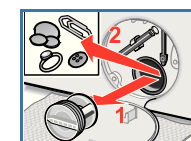
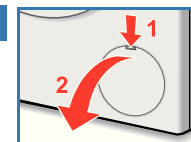
- Risk of scalding! Allow detergent solution to cool down!
- Turn off the tap!



## Drain pump blocked

Set programme selector to **Off**, pull out the mains plug.

1. Open service flap.
2. Take the drainage hose out of the holder.
3. Remove sealing cap, allow detergent solution to flow out. Have a suitable container ready. Push up the closing cap and place the drain hose back in its holder.
4. Carefully unscrew the pump cover (Caution! residual water). Clean the interior, pump cover thread and pump housing (fan impeller in the detergent-solution pump must rotate).
5. Reinsert and screw on pump cover. Handle should be vertical.
6. Close the service flap.



To prevent unused detergent from flowing into the outlet during the next wash: Pour 1 litre of water into dispenser **II** and start the **Spin** or **Empty** programme.



## Drainage hose on the siphon blocked

Set programme selector to **Off**, pull out the mains plug.

1. Loosen hose clip, carefully remove drainage hose (Caution! residual water).
2. Clean drainage hose and siphon spigot.
3. Re-attach drainage hose and secure connection point with hose clip.



## Filter blocked in water inlet hose

*depending on model*

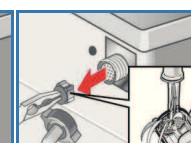
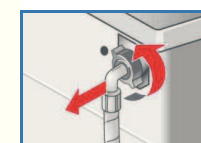
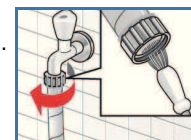


### Risk of electric shock!

Do not immerse Aqua-Stop safety device in water (contains electric valve).

Release water pressure in the supply hose:

1. Turn off the tap!
  2. Select any programme (except **Rinse** , **Spin** or **Empty** .
  3. Press **Start/Reload** button. Leave programme for approx. 40 seconds.
  4. Set programme selector to **Off**. Pull out the mains plug. Clean the filter:
  5. Disconnect the hose from the water tap. Clean filter with small brush.
- and/or** for standard and Aqua-Secure models: remove hose from the rear of the appliance. Take out filter with pliers and clean.
6. Connect the hose and check for leaks.

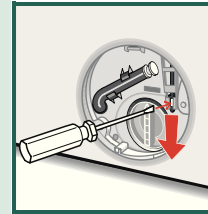




## What to do if ...

- Water is leaking out.
  - Fit/refit drainage hose correctly.
  - Tighten the screw connection of the supply hose.
- No water supply. Detergent not dispensed.
  - **Start/Reload** not selected?
  - Water tap not turned on?
  - Supply hose filter blocked? Clean the filter. →page 11
  - Supply hose kinked or trapped?
- Washing machine door cannot be opened.
  - Safety function active. Programme stopped? →page 4
  - (Rinse stop = no final drain/spin) selected? →page 5
  - Can be opened by emergency release only. →page 13
- Programme does not start.
  - **Start/Reload** or (**Finish in**) time selected?
  - Washing machine door closed?
- Detergent solution is not drained.
  - Clean the drain pump. →page 11
  - Clean waste pipe and/or drainage hose.
- Water not visible in the drum.
  - Not a fault - water below the visible area.
- Spin result not satisfactory.
  - Wash small and large items of laundry together.
  - **Easy Iron** selected? →page 6
  - Speed selected too low? →page 5
- Spin cycle performed several times.
  - Not a fault - unbalanced load detection system adjusts the imbalance.
- Compartment not rinsed out completely.
  - Remove the insert. Clean detergent drawer and insert. →page 10
- Odour formation in the washing machine.
  - Run the **Drum Clean** **90 °C** programme without laundry.
  - Use standard detergent.
- Foam escapes from the detergent drawer.
  - Too much detergent used?  
Mix 1 tablespoon of fabric softener with ½ litre of water and pour into compartment II in the detergent drawer.
  - Reduce detergent dosage for the next wash cycle.
- Excessive noise, vibrations and "wandering" during spin cycle.
  - Are the appliance feet fixed?  
Secure the appliance feet. →*Installation instructions, page 5*
  - Transport bolts removed?  
Remove transport bolts.  
→*Installation instructions, page 3*
- Display panel/indicator lamps do not light up while the appliance is running.
  - Power failure/off? Interrupted programme will be resumed when power returns.
  - Circuit breaker tripped? Reset the circuit breaker/change the fuse.
  - If the fault occurs repeatedly, call the customer service.
- Programme sequence longer than usual.
  - Not a fault - unbalanced load detection system adjusts imbalance by repeatedly distributing the laundry.
  - Not a fault - foam detection system active - adds an additional rinse cycle.
- Detergent residues on the laundry.
  - Occasionally, phosphate-free detergents contain water-insoluble residues.
  - Select **Rinse** or brush the laundry after washing.
- If you cannot correct a fault yourself or a repair is required:
  - Turn the programme selector to **Off** and pull the mains plug out of the socket.
  - Turn off the tap and call the customer services. →page 13

## Emergency release e.g. in the event of power failure



Interrupted programme will be resumed when power returns. However, if the laundry has to be removed, the washing machine door can be opened as follows:



*Risk of scalding.  
The detergent solution and laundry may be hot.  
If possible, leave it to cool down.  
Do not reach into the drum if it is still rotating.  
Do not open the washing machine door if water can be seen through the glass.*

- Set the programme selector to **Off** and disconnect the mains plug.
- Drain the detergent solution. →page 11
- Pull the emergency release with a tool and release. The washing machine door can then be opened.

## Customer service

- If you cannot rectify the fault yourself →page 12: *What to do if ...*, please contact our customer service. We will always find a suitable solution and will avoid a visit from a service technician wherever possible.
- The contact details for all countries can be found in the enclosed customer service directory.
- Please give the customer service the product number (E-Nr.) and the production number (FD) of the appliance.

E-Nr. \_\_\_\_\_ FD \_\_\_\_\_

Product number      Production number

*You will find the identification plate containing this information on the frame of the open door, and of the rating plate on the back of the appliance.*

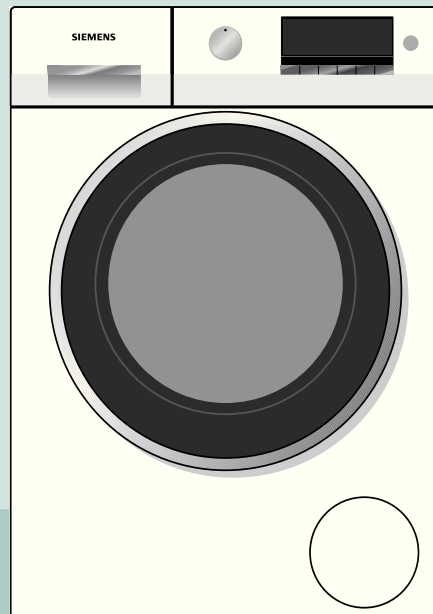
**Rely on the professionalism of the manufacturer.** Please contact us. This will ensure that the repair is carried out by trained service technicians who arrive equipped with genuine spare parts for your appliance.



Read these instructions before switching on the washing machine.

Also follow the separate Installation and maintenance instructions.

Follow the safety instructions on Page 8.



## Operating instructions

en

WM12S460IN

**SIEMENS**