

Your new dryer

Congratulations - You have chosen to buy a modern, high-quality Siemens domestic appliance. A distinctive feature of your dryer is its low energy consumption.

Every dryer which leaves our factory is carefully checked to ensure that it functions correctly and is in perfect condition. Should you have any questions, our after-sales service will be pleased to help.

Environmentally-responsible disposal This appliance is labelled in accordance with European Directive 2012/19/EU concerning used electrical and electronic appliances (waste electrical and electronic equipment - WEEE). The guideline determines the framework for the return and recycling of used appliances as applicable throughout the EU.

For further information about our products, accessories, spare parts and services, please visit: www.siemens-home.com

Contents	Page
■ Preparation	2
■ Setting the programmes	2
■ Drying	3/4
■ Notes on laundry	5
■ Care and cleaning	6
■ Overview of programmes	7
■ Installation	8
■ Frost protection / Transport	8
■ Technical data	9
■ Optional accessories	9
■ What to do if... / After-sales service	10
■ Safety instructions	11

Intended use

- exclusively for domestic use,
- only for drying fabrics which have been washed using water.

Keep children younger than 3 years old away from the dryer.
Do not let children make the cleaning and maintenance work on the dryer without supervision.
Do not leave children unsupervised near the dryer.
Keep pets away from the dryer.
The dryer may be operated by children from 8 years of age, by persons who have limited physical, sensory or mental abilities and by persons who have inadequate experience or knowledge, provided they are supervised or have been instructed by a responsible person.
This appliance is intended for use up to a maximum height of 4000 metres above sea level.

Preparing for installation, see page 8

Never operate the dryer if it is damaged.
Inform your after-sales service.

Only if your hands are dry.
Only hold the plug by the plug casing.

Sorting and loading laundry

Remove all objects from pockets.
Pay particular attention to cigarette lighters.
The drum must be empty before filling.

Selecting and adjusting the programme

Select the drying programme ...

... and adapt to individual requirements

For a detailed programme overview, → see page 7.

Diagram of the control panel showing the Programme selector and Additional functions/status and service indicators.

Programme selector: Easy-Care, Cupboard Dry, Iron Dry, cold 20', warm 20', Timed Program, Off, Cupboard Dry Plus, Iron Dry, warm 60', warm 40'.

Additional functions/status and service indicators: Empty, Clean, Start.

→	finished/anti-crease
Empty	Lit → empty the container for condensation.
Clean	Flashes → clean the fluff filter and/or air cooler.
(easy-iron)	Reduces creasing and prolongs the anti-creasing phase after the programme has finished.
(low heat)	Reduced temperature for delicate fabrics e.g. polyacrylic, polyamide, elastane or acetate; for longer drying times.

Drying



Drying

Emptying condensation

- Empty the container **after** every use.
1. Remove the condensate container and hold it level.
 2. Open the locking cap.
 3. Pour out the condensation.

Check the valve in the condensate container for dirt: If there are fluff deposits on the valve → rinse the valve under running water. Also pour some tap water into the empty condensate container then pour it out again through the valve. To do this, press the valve in and allow all the water to drain out.

4. Regularly remove any deposits in the locking cap hole using a pointed object.
 5. Close the locking cap.
 6. Always push the tank fully back in until it locks in place.
- If the **Empty** / **Clean** indicator light comes on after emptying the container → see page 10.

Cleaning the fluff filter

- Clean the fluff filter after every use.
1. Open the door. Remove any fluff from the door/around the door and pull out the fluff filter.
 2. Remove the fluff from the shaft of the fluff filter. Ensure that no fluff falls into the open shaft.
 3. Open the fluff filter and remove the fluff (sweep your hand over the fluff filter). If the fluff filter is very dirty or blocked, rinse with warm water and dry thoroughly.
 4. Close and reinsert the fluff filter.

Switching off the dryer

Set the programme selector to **Off**.
Do not leave laundry in the dryer.

Removing the laundry

Your dryer has an automatic anti-crease function. The drum is moved at set intervals for 30 minutes after the programme has ended. Laundry remains loose and fluffy (for 90 minutes, if additional **(easy-iron)** function is selected - depending on model).

End of programme

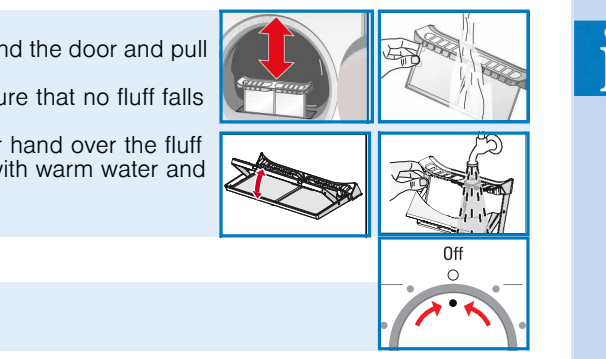
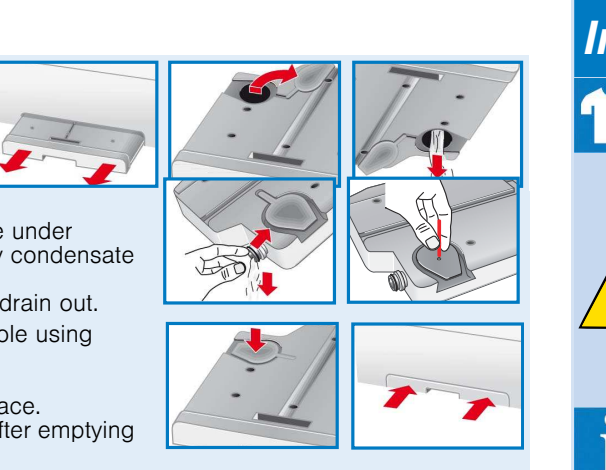
as soon as → (**finished/anti-crease**) indicator light flashes

Adding or removing laundry

The drying cycle can be interrupted in order to add or remove laundry. The programme must then be continued or ended.

The drum and the door may be hot!

1. Open the door. The drying process is interrupted.
2. Load or remove laundry and close the door.
3. If required, select a new programme and additional functions.
4. Press the **Start** button.



Information on laundry ...

Labelling of fabrics

Follow the manufacturer's care information.

- ☑ Drying at normal temperature.
- ☑ Low-temperature drying → in addition, select **(low heat)**.
- ☑ Do not machine dry.

Be sure to follow the safety instructions → see page 11! For example, do not use the dryer for the following fabrics:

- Airtight fabrics (e.g. rubber-coated fabrics).
- Delicate materials (silk, curtains made from synthetic material) → they may crease.
- Laundry contaminated with oil.

Before drying for the first time

- Do not put any laundry in the dryer. Set the programme selector to a timed programme (→ see page 7) and select **Start**. When the programme has finished, set the programme selector to **Off**.

Drying tips

- To ensure a consistent result, sort the laundry by fabric type and drying programme.
- Always dry very small fabrics (e.g. baby socks) together with large items of laundry (e.g. hand towels).
- Fasten zips, hooks and eyelets, button covers and tie together cloth belts, strips, etc.
- Do not overdry easy-care laundry → risk of creasing. Allow laundry to finish drying in the air.
- Do not iron laundry immediately after drying, fold items up and leave for a while → the remaining moisture will then be distributed evenly.
- Knitted fabrics (e.g. T shirts, knitwear) often shrink when tumble dried for the first time → do not use the **Cupboard Dry Plus** programme.
- Starched laundry is not always suitable for dryers → starch leaves behind a coating that adversely affects the drying operation.
- Use the correct dosage of fabric softener as per the manufacturer's instructions when washing the laundry to be dried subsequently.
- Using a timed programme with a small laundry load → optimisation of the drying result.

Environmental protection / Energy-saving tips

- Before drying, spin the laundry thoroughly in the washing machine → the higher the spin speed, the shorter the drying time will be (consumes less energy), also spin easy-care laundry.
- Use the maximum recommended fill level but do not overload laundry → overview of programmes, see page 7.
- Make sure the room is well ventilated during drying.
- Clean the fluff filter after every drying cycle → see page 4.
- Do not block or seal the air inlet.

Care and cleaning

Dryer cabinet, control panel, air cooler, moisture sensors

- Wipe off with a soft, damp cloth.
- Do not use abrasive cleaners or solvents.
- Remove detergent and cleaning agent residue immediately.

Clean the air cooler 5 to 6 times a year or if **Empty** / **Clean** flashes after cleaning the fluff filter.

Air cooler

In order to clean it, the air cooler must be removed.

- Allow the dryer to cool.
- Residual water may leak out, so place an absorbent towel underneath the maintenance door.

1. Unlock the maintenance door (1).
2. Fully open the maintenance door (2).

3. Turn both locking levers outwards (1).
4. Pull out the front insert (2).

5. Remove the air cooler.

Take care not to damage the air cooler. When cleaning, use warm water only. Do not use hard or sharp-edged objects.

6. Clean the air cooler thoroughly and allow the water to drain off. Clean the seals.

7. First insert the air cooler (handle at the bottom) and then the front insert.
8. Turn back both locking levers.
9. Lock the maintenance door.

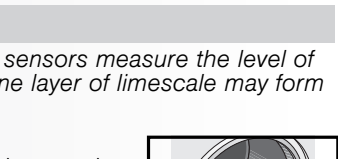
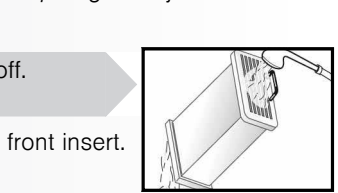
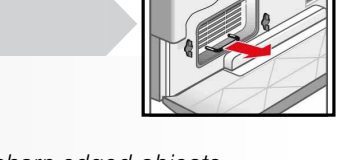
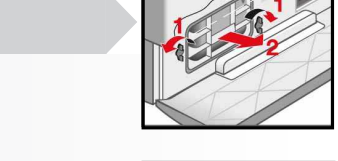
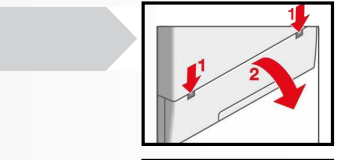
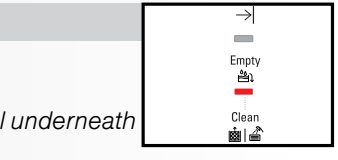
Moisture sensors

The dryer is fitted with stainless steel moisture sensors. The sensors measure the level of moisture in the laundry. After a long period of operation, a fine layer of limescale may form on the sensors.

1. Open the door.
2. Clean the moisture sensors using a slightly damp sponge with a rough surface.

Do not use steel wool or abrasive materials.

Only when the appliance is switched off.



After drying, laundry is to be ...		Ironed	lightly ironed	not ironed	mangled
TEXTILE TYPE AND INFORMATION					
Cottons	max. 7 kg	Hard-wearing fabrics, boil-proof fabrics made of cotton or linen.			
Easy-Care	max. 3.5 kg	Non-iron laundry made of synthetic fibres and mixed fabric, easy-care cotton.			
Iron Dry		The condition of the laundry means it is suitable for ironing (iron clothes in order to avoid creases).			
Cupboard Dry		For single-layered laundry.			
*Cupboard Dry Plus		For laundry with thick, multi-layered parts.			
Timed Program					
warm 60°		Pre-dried, multi-layered, sensitive fabrics made of acrylic fibres, or separate small items of laundry. Also for subsequent drying.			
warm 40°	max. 3 kg				
warm 20°					
cold 20°	max. 3 kg	All types of fabrics. For freshening up or airing of items of laundry that have been worn for a short period of time.			

*only for the Cottons programme
**Dryness levels can be selected individually → Cupboard Dry Plus, Cupboard Dry and Iron Dry (depending on the model).
Degree of dryness can be finely adjusted; multi-layered textiles require a longer drying time than single-layered items of clothing.
Recommendation: Dry separately

9507 / 9000787977

WT44C101GC

BSH Hausgeräte GmbH

Carl-Wery-Strasse 34

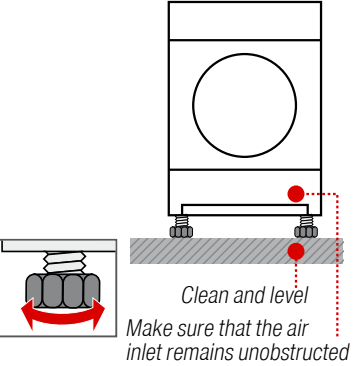
81739 München/GERMANY

Installation

- Delivery includes: dryer, installation and instruction manual.
- Check dryer for transport damage.
- The dryer is very heavy. Do not lift without assistance.
- Be careful to avoid sharp edges.
- Do not lift the dryer by protruding parts (e.g. the door) - risk of breakage.
- Do not install in a room which is susceptible to frost. Water may cause damage once it starts to freeze.
- If in doubt, have the appliance connected by a specialist.

1. **Setting up the dryer**
- The appliance plug must always be accessible.
 - Ensure that the appliance is installed on a clean, level and firm surface.
 - Do not obstruct the air inlet on the front of the dryer.
 - Keep the area around the dryer clean.
 - Level the dryer using the front threaded feet.

Remove all accessories from the drum. The drum must be empty.



Do not install the dryer behind a door or a sliding door which could obstruct the door of the dryer or prevent it from being opened. Children can then not be trapped inside and their life endangered.

2. **Mains connection** For safety instructions, → see page 11.
- Connect to an AC earthed socket. If in doubt have the socket checked by a specialist.
 - The mains voltage must be the same as the voltage specified on the rating plate (→ see page 9).
 - The connected load and necessary fuse protection are specified on the rating plate.

Frost protection / Transport

Preparation
Empty the container for condensation → see page 4.

There may be residual water in the dryer. This can leak out if the dryer is at an angle.

Do not operate the dryer if there is a danger of frost.

Technical data

Dimensions (DxWxH)	60 x 60 x 85 cm
Weight	approximately 35 kg
Max. capacity	7 kg
Condensate container	approx. 4.2 l
Ambient temperature	5 - 35 °C
Connection voltage	220 - 240 V
Connected load	2025/2600 W
Fuse protection	13 A
Product number	
Production number	→ Rating plate or inside of the door

You can find the rating plate on the back of the dryer.

Consumption rates

Specifications are average values established under normal operating conditions. Fluctuations of up to 10 % are possible.

	Spin speed in rpm (residual moisture)	Drying time** in min incl. 8 min cooling time	Energy consumption** in kWh
Cottons 7 kg		13 A	13 A
Cupboard Dry*	1400 (approx. 50 %)	90	3.32
	1000 (approx. 60 %)	106	3.92
	800 (approx. 70 %)	120	4.48
Iron Dry*	1400 (approx. 50 %)	66	2.45
	1000 (approx. 60 %)	82	2.94
	800 (approx. 70 %)	96	3.43
Easy-Care 3.5 kg			
Cupboard Dry*	800 (approx. 40 %)	40	1.16
	600 (approx. 50 %)	45	1.45

*Test programmes according to DIN EN 61121.
**The values may differ from those specified, depending on the type of fabric, composition of laundry to be dried, residual moisture in the fabric, the degree of dryness that has been set and the amount of laundry being loaded.

Optional accessories (order from the after-sales service using the order number, depending on model)

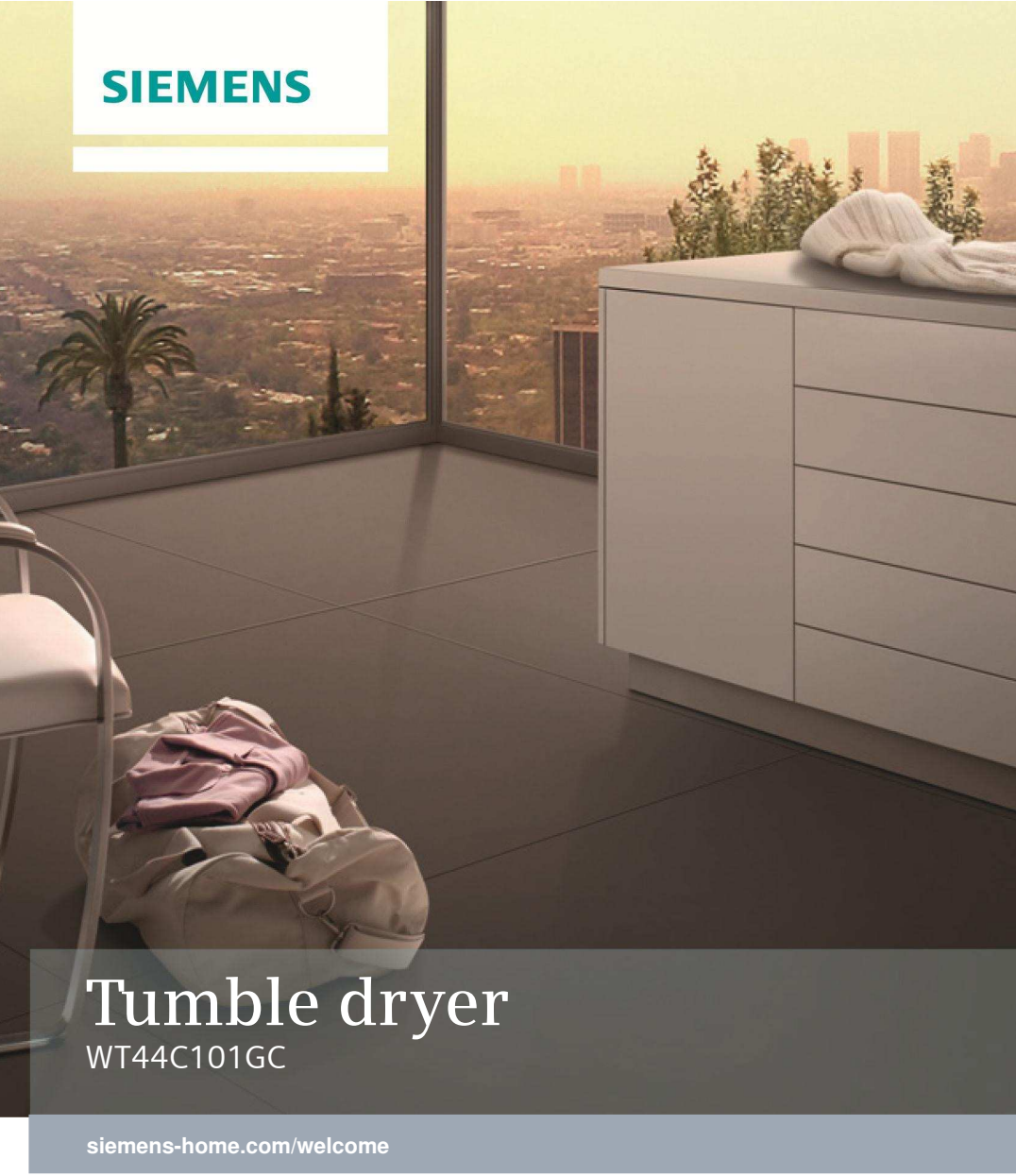
Washer-dryer stack connection set
The dryer can be placed on top of a suitable washing machine with the same width and depth to save space. The dryer **must be** fastened on the washing machine with this connection set. If the worktop of the washing machine is less than 544 mm deep, please consult the after-sales service or your specialist retailer.

What to do if ...

- If you cannot rectify a fault yourself (e.g. switching off/on), please contact our after-sales service. We will always find an appropriate solution and will avoid unnecessary visits by engineers. Trust the expertise of the manufacturer and rest assured that the repair will be carried out by trained service technicians using original spare parts. The contact details of your local after-sales service can be found in the enclosed **after-sales service** directory, or by calling one of these numbers:
 - **GB** 0344 892 8999 (Calls charged at local or mobile rate.)
 - **IE** 01450 2655 (0.03 € per minute at peak. Off peak 0.0088 € per minute.)When contacting the after-sales service, please quote the appliance's product number (E no.) and production number (FD) (see the inside of the door). Set the programme selector to **Off** and remove the appliance plug from the socket.
- Start indicator lamp does not light up. Mains plug plugged in? Programme selected? Check the socket fuse.
- Empty / Clean indicator Empty container for condensation → see page 4.
- Empty / Clean indicator Clean the fluff filter under running water → see page 4. Clean the air cooler, if required → see page 6.
- Dryer does not start. Has the Start button been pressed? Door closed? Programme set?
- Programme terminated shortly after the start. Ambient temperature greater than 5 °C?
- Water is leaking out. Make sure the dryer is level.
- The door opens by itself. Push the door closed until you hear it engage.
- The required degree of dryness was not achieved or the drying time was too long. Clean the fluff filter under running water → see page 4. Empty the container for condensation. Ambient temperature higher than 35 °C → ventilate the room. Air inlet may be blocked → clear obstruction. Unsuitable programme selected? → see page 7. Dryer installed too closely to other objects? Provide adequate air circulation. Mains failure → Restart the dryer. Fine layer of limescale on the moisture sensors. Clean the sensors → see page 6.
- Laundry damp. Use the next drying programme up or use the timed programme as a supplement → see page 7. Warm laundry feels damper than it really is!
- The humidity in the room has increased significantly. Make sure the room is sufficiently ventilated. Air inlet blocked? → Clear obstruction. Make sure that the air cooler is inserted.
- One or more indicator lights are flashing. Clean the fluff filter and air cooler → see page 4/6. Check the installation conditions → see page 8. Switch off, allow to cool, switch back on and restart the programme.
- Power failure. Remove laundry from the dryer immediately and spread out. This allows the heat to dissipate. Be careful as the door, the drum and the laundry may be hot.

Safety instructions

- Emergency ONLY use the dryer...**
 - Pull the appliance plug out of the socket immediately or disconnect the fuse.
 - in rooms inside the house.
 - use for drying fabrics.
- The dryer must NEVER... Dangers**
 - be used for other purposes than those described above.
 - be modified in terms of its technology or attributes.
 - The dryer must not be used by children or persons who have not been instructed in its use.
 - Do not leave children unsupervised near the dryer.
 - Keep pets away from the dryer.
 - Remove all objects from the pockets of garments. Pay particular attention to cigarette lighters → **risk of explosion**.
 - Do not lean or sit on the door → **risk of tipping**.
 - Open the door with care. Hot steam may escape.
- Installation**
 - Fasten down loose leads → **risk of tripping**.
 - Do not operate the dryer where there is a risk of frost.
- Mains connection**
 - Connect the dryer according to specifications to an AC earthed socket, as otherwise it cannot be guaranteed that the appliance is completely safe.
 - The cable cross-section must be sufficient.
 - Only use earth-leakage circuit breakers with the following symbol:
 - The appliance plug and socket must be compatible.
 - Do not use multiple plugs/couplings and/or extension cables.
 - Do not touch or hold the appliance plug with wet hands → **risk of electric shock**.
 - Never pull the appliance plug out of the socket by its cable.
 - Do not damage the mains lead → **risk of electric shock**.
- Operation**
 - Only load the drum with items of laundry. Check what has been loaded before switching the dryer on.
 - Do not use the dryer if the laundry has been in contact with solvents, oil, wax, grease or paint (e.g. hair setting spray, nail polish remover, stain remover, cleaning solvent, etc.) → **fire/explosion hazard**.
 - The tumble dryer is not to be used if industrial chemicals have been used for cleaning
 - Hazard due to dust (e.g. coal dust, flour): do not use the dryer → **risk of explosion**.
 - Do not turn off the dryer until the drying process ends, unless the laundry will be removed quickly and spread out, so that the heat can dissipate.
 - Do not put laundry containing foamed material/rubber in the dryer → elastic material may be destroyed and the dryer may be damaged due to possible deformation of the foamed material.
 - Light things, such as long hair, may be sucked into the air inlet of the dryer → **Risk of injury**.
 - Final part of a tumble dryer cycle occurs without heat (cool down cycle), to ensure that the items are left at a temperature that ensures that the items will not be damaged.
 - Switch off the dryer once the programme has ended.
 - The exterior of the appliance's rear panel becomes very hot during operation. Never touch the hot surface of the appliance's rear panel. Keep children away from the appliance → **Risk of burns**.
 - The water from condensation is not drinking water and may be contaminated with fluff.
- Defect**
 - Do not use the dryer if it is defective or if you suspect that it is. Repairs must only be carried out by the after-sales service.
 - Do not use the dryer with a faulty mains cable. In order to avoid risk, have the mains lead replaced only by our after-sales service.
- Spare parts**
 - Only use genuine spare parts and accessories for safety reasons.
- Disposal**
 - Dryer: pull out the mains plug, **then** cut the mains cable from the appliance. Dispose of the appliance at a public disposal facility.
 - Packaging: Do not allow children access to items of packaging → **risk of suffocation**.
 - All materials are environmentally friendly and reusable. Dispose of in an environmentally responsible manner.



SIEMENS

Tumble dryer
WT44C101GC

siemens-home.com/welcome

en Operating and installation instructions

Observe the safety instructions on page 11.

Read these instructions and the separate **Energy-saving mode** instructions before operating the dryer.

Register your product online

Your new dryer

Congratulations - You have chosen to buy a modern, high-quality Siemens domestic appliance.
A distinctive feature of your dryer is its low energy consumption.

Every dryer which leaves our factory is carefully checked to ensure that it functions correctly and is in perfect condition.
Should you have any questions, our after-sales service will be pleased to help.

Environmentally-responsible disposal

This appliance is labelled in accordance with European Directive 2012/19/EU concerning used electrical and electronic appliances (waste electrical and electronic equipment - WEEE). The guideline determines the framework for the return and recycling of used appliances as applicable throughout the EU.

For further information about our products, accessories, spare parts and services, please visit: www.siemens-home.com

Contents

	Page
Preparation	2
Setting the programmes	2
Drying	3/4
Notes on laundry	5
Care and cleaning	6
Overview of programmes	7
Installation	8
Frost protection / Transport	8
Technical data	9
Optional accessories	9
What to do if... / After-sales service	10
Safety instructions	11

Intended use

- exclusively for domestic use,
- only for drying fabrics which have been washed using water.

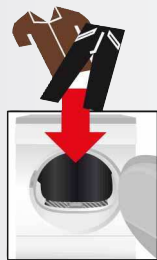
Keep children younger than 3 years old away from the dryer.
Do not let children make the cleaning and maintenance work on the dryer without supervision.
Do not leave children unsupervised near the dryer.
Keep pets away from the dryer.
The dryer may be operated by children from 8 years of age, by persons who have limited physical, sensory or mental abilities and by persons who have inadequate experience or knowledge, provided they are supervised or have been instructed by a responsible person.
This appliance is intended for use up to a maximum height of 4000 metres above sea level.

Preparing for installation, see page 8

Before using
run the drying

Never operate the dryer if it is damaged.
Inform your after-sales service.

Only if your hands are dry.
Only hold the plug by the plug casing.



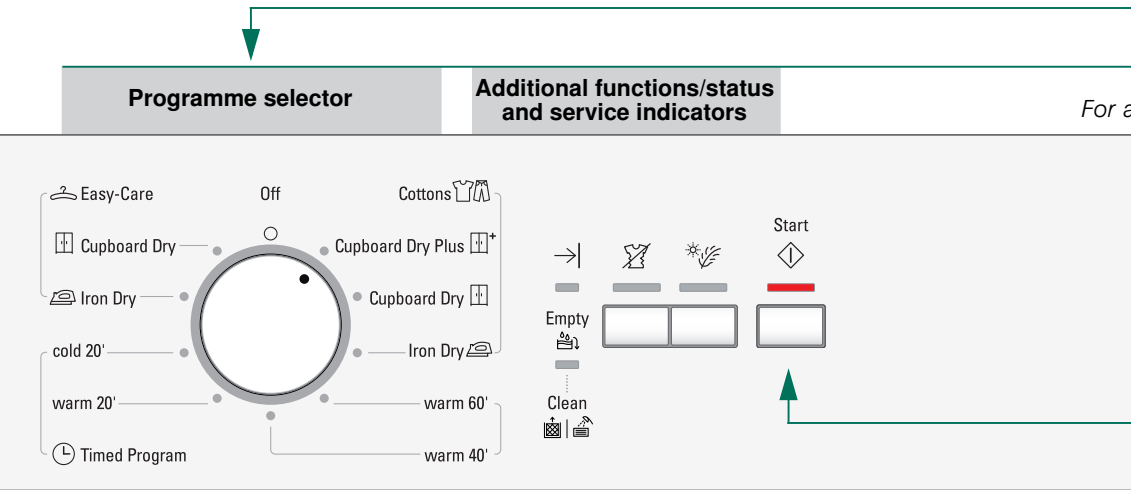
Remove all objects from pockets.
Pay particular attention to cigarette lighters.
The drum must be empty before filling.

Selecting and adjusting the

Select the d

... and adapt to indiv

For a detailed programme over



→	finished/anti-crease
Empty	Lit → empty the container for condensation.
Clean	Flashes → clean the fluff filter and/or air cooler.
(easy-iron)	Reduces creasing and prolongs the anti-creasing phase after the programme has finished.
(low heat)	Reduced temperature for delicate fabrics, e.g. polyacrylic, polyamide, elastane or acetate; for longer drying times.

the dryer for the first time
cycle without any laundry → see page 7.

Inspecting
the dryer

Connecting the
mains plug

Loading laundry

the programme
drying programme ...

Additional requirements

view, → see page 7.

the **Start** button

only operate the dryer
with the fluff filter inserted.

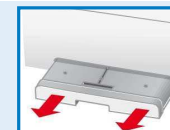
Drying



Emptying condensation

Empty the container **after** every use.

1. Remove the condensate container and hold it level.
2. Open the locking cap.
3. Pour out the condensation.

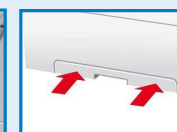


Check the valve in the condensate container for dirt:

If there are fluff deposits on the valve → rinse the valve under running water. Also pour some tap water into the empty condensate container then pour it out again through the valve. To do this, press the valve in and allow all the water to drain out.



4. Regularly remove any deposits in the locking cap hole using a pointed object.



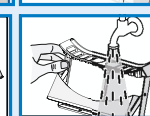
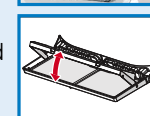
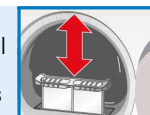
5. Close the locking cap.
6. Always push the tank fully back in until it locks in place.

If the **Empty** / **Clean** indicator light comes on after emptying the container → see page 10.

Cleaning the fluff filter

Clean the fluff filter after every use.

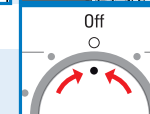
1. Open the door. Remove any fluff from the door/around the door and pull out the fluff filter.
2. Remove the fluff from the shaft of the fluff filter. Ensure that no fluff falls into the open shaft.
3. Open the fluff filter and remove the fluff (sweep your hand over the fluff filter). If the fluff filter is very dirty or blocked, rinse with warm water and dry thoroughly.
4. Close and reinsert the fluff filter.



Switching off the dryer

Set the programme selector to **Off**.

Do not leave laundry in the dryer.



Removing the laundry

Your dryer has an automatic anti-crease function. The drum is moved at set intervals for 30 minutes after the programme has ended. Laundry remains loose and fluffy (for 90 minutes, if additional **easy-iron** function is selected - depending on model).

End of programme as soon as → (**finished/anti-crease**) indicator light flashes



Adding or removing laundry

The drying cycle can be interrupted in order to add or remove laundry. The programme must then be continued or ended.



The drum and the door may be hot!

1. Open the door. The drying process is interrupted.
2. Load or remove laundry and close the door.
3. If required, select a new programme and additional functions.
4. Press the **Start** button.

Information on laundry ...



Labelling of fabrics

Follow the manufacturer's care information.

- ☒ Drying at normal temperature.
- ☒ Low-temperature drying → in addition, select * (low heat).
- ☒ Do not machine dry.



Be sure to follow the safety instructions → see page 11!
For example, do not use the dryer for the following fabrics:

- Airtight fabrics (e.g. rubber-coated fabrics).
- Delicate materials (silk, curtains made from synthetic material) → they may crease.
- Laundry contaminated with oil.



Before drying for the first time

- Do not put any laundry in the dryer. Set the programme selector to a timed programme (→ see page 7) and select **Start**. When the programme has finished, set the programme selector to **Off**.



Drying tips

- To ensure a consistent result, sort the laundry by fabric type and drying programme.
- Always dry very small fabrics (e.g. baby socks) together with large items of laundry (e.g. hand towels).
- Fasten zips, hooks and eyelets, button covers and tie together cloth belts, strips, etc.
- Do not overdry easy-care laundry → risk of creasing. Allow laundry to finish drying in the air.
- Do not iron laundry immediately after drying, fold items up and leave for a while → the remaining moisture will then be distributed evenly.
- Knitted fabrics (e.g. T shirts, knitwear) often shrink when tumble dried for the first time → do not use the **Cupboard Dry Plus** + programme.
- Starched laundry is not always suitable for dryers → starch leaves behind a coating that adversely affects the drying operation.
- Use the correct dosage of fabric softener as per the manufacturer's instructions when washing the laundry to be dried subsequently.
- Using a timed programme with a small laundry load → optimisation of the drying result.

Environmental protection / Energy-saving tips

- Before drying, spin the laundry thoroughly in the washing machine → the higher the spin speed, the shorter the drying time will be (consumes less energy), also spin easy-care laundry.
- Use the maximum recommended fill level but do not overload laundry → overview of programmes, see page 7.
- Make sure the room is well ventilated during drying.
- Clean the fluff filter after every drying cycle → see page 4.
- Do not block or seal the air inlet.

Care and cleaning



Only when the appliance is switched off.



Dryer cabinet, control panel, air cooler, moisture sensors

- Wipe off with a soft, damp cloth.
- Do not use abrasive cleaners or solvents.
- Remove detergent and cleaning agent residue immediately.

Clean the air cooler 5 to 6 times a year
or if **Empty** / **Clean** flashes after cleaning the fluff filter.

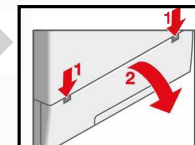
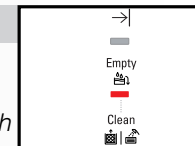


Air cooler

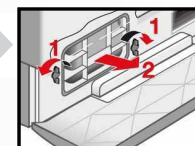
In order to clean it, the air cooler must be removed.

- Allow the dryer to cool.
- Residual water may leak out, so place an absorbent towel underneath the maintenance door.

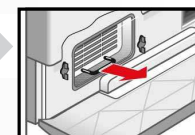
1. Unlock the maintenance door (1).
2. Fully open the maintenance door (2).



3. Turn both locking levers outwards (1).
4. Pull out the front insert (2).



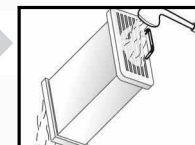
5. Remove the air cooler.



Take care not to damage the air cooler.

When cleaning, use warm water only. Do not use hard or sharp-edged objects.

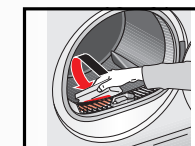
6. Clean the air cooler thoroughly and allow the water to drain off. Clean the seals.
7. First insert the air cooler (handle at the bottom) and then the front insert.
8. Turn back both locking levers.
9. Lock the maintenance door.



Moisture sensors

The dryer is fitted with stainless steel moisture sensors. The sensors measure the level of moisture in the laundry. After a long period of operation, a fine layer of limescale may form on the sensors.

1. Open the door.
2. Clean the moisture sensors using a slightly damp sponge with a rough surface.



Do not use steel wool or abrasive materials.

Programme overview

see also page 5.

Sort the laundry according to type of textile and fabric. Fabrics must be suitable for tumble drying.

After drying, laundry is to be ...		ironed	lightly ironed	not ironed	mangled
PROGRAMMES					
TEXTILE TYPE AND INFORMATION					
** Cottons	max. 7 kg	Hard-wearing fabrics, boil-proof fabrics made of cotton or linen.			
** Easy-Care	max. 3.5 kg	Non-iron laundry made of synthetic fibres and mixed fabric, easy-care cotton.			
Iron Dry		The condition of the laundry means it is suitable for ironing (iron clothes in order to avoid creases).			
Cupboard Dry		For single-layered laundry.			
+ Cupboard Dry Plus		For laundry with thick, multi-layered parts.			
Timed Program					
warm 60'		Pre-dried, multi-layered, sensitive fabrics made of acrylic fibres, or separate small items of laundry. Also for subsequent drying.			
warm 40'	max. 3 kg				
warm 20'					
cold 20'	max. 3 kg	All types of fabrics. For freshening up or airing of items of laundry that have been worn for a short period of time.			

*only for the Cottons programme

**Dryness levels can be selected individually → Cupboard Dry Plus, Cupboard Dry and Iron Dry (depending on the model). Degree of dryness can be finely adjusted; multi-layered textiles require a longer drying time than single-layered items of clothing. Recommendation: Dry separately

9507 / 9000787977



BSH Hausgeräte GmbH
Carl-Wery-Straße 34
81739 München/GERMANY

WT44C1016C

Installation

- Delivery includes: dryer, installation and instruction manual.
- Check dryer for transport damage.
- The dryer is very heavy. Do not lift without assistance.
- Be careful to avoid sharp edges.
- Do not lift the dryer by protruding parts (e.g. the door) - risk of breakage.
- Do not install in a room which is susceptible to frost. Water may cause damage once it starts to freeze.
- If in doubt, have the appliance connected by a specialist.

1.

Setting up the dryer

- The appliance plug must always be accessible.
- Ensure that the appliance is installed on a clean, level and firm surface.
- Do not obstruct the air inlet on the front of the dryer.
- Keep the area around the dryer clean.
- Level the dryer using the front threaded feet.

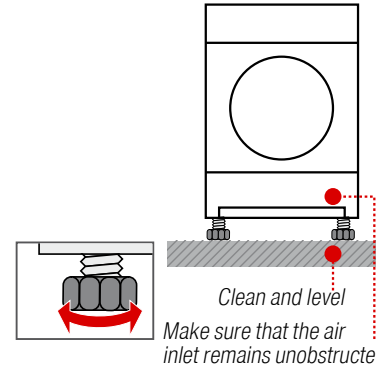
On no account remove the threaded feet.



Do not install the dryer behind a door or a sliding door which could obstruct the door of the dryer or prevent it from being opened. Children can then not be trapped inside and their life endangered.



Remove all accessories from the drum. The drum must be empty.



2.

Mains connection For safety instructions, → see page 11.

- Connect to an AC earthed socket. If in doubt have the socket checked by a specialist.
- The mains voltage must be the same as the voltage specified on the rating plate (→ see page 9).
- The connected load and necessary fuse protection are specified on the rating plate.

Frost protection / Transport



Do not operate the dryer if there is a danger of frost.



Preparation

Empty the container for condensation → see page 4.



There may be residual water in the dryer. This can leak out if the dryer is at an angle.

Technical data

● Dimensions (DxWxH)	60 x 60 x 85 cm
Weight	approximately 35 kg
Max. capacity	7 kg
Condensate container	approx. 4.2 l
Ambient temperature	5 - 35 °C
Connection voltage	220 - 240 V
Connected load	2025/2600 W
Fuse protection	13 A

Product number	
Production number	→ Rating plate or inside of the door

You can find the rating plate on the back of the dryer.

● Consumption rates	Specifications are average values established under normal operating conditions. Fluctuations of up to 10 % are possible.		
	Spin speed in rpm (residual moisture)	Drying time** in min incl. 8 min cooling time	Energy consumption** in kWh
👕 Cottons 7 kg		13 A	13 A
🗑️ Cupboard Dry*	1400 (approx. 50 %)	90	3.32
	1000 (approx. 60 %)	106	3.92
	800 (approx. 70 %)	120	4.48
👚 Iron Dry*	1400 (approx. 50 %)	66	2.45
	1000 (approx. 60 %)	82	2.94
	800 (approx. 70 %)	96	3.43
👶 Easy-Care 3.5 kg			
	800 (approx. 40 %)	40	1.16
	600 (approx. 50 %)	45	1.45

*Test programmes according to DIN EN 61121.
**The values may differ from those specified, depending on the type of fabric, composition of laundry to be dried, residual moisture in the fabric, the degree of dryness that has been set and the amount of laundry being loaded.

Optional accessories (order from the after-sales service using the order number, depending on model)

WZ
20311

Washer-dryer stack connection set
The dryer can be placed on top of a suitable washing machine with the same width and depth to save space. The dryer **must be** fastened on the washing machine with this connection set. If the worktop of the washing machine is less than 544 mm deep, please consult the after-sales service or your specialist retailer.

What to do if ...



If you cannot rectify a fault yourself (e.g. switching off/on), please contact our after-sales service. We will always find an appropriate solution and will avoid unnecessary visits by engineers. Trust the expertise of the manufacturer and rest assured that the repair will be carried out by trained service technicians using original spare parts. The contact details of your local after-sales service can be found in the enclosed **after-sales service** directory, or by calling one of these numbers:
– **GB** 0344 892 8999 (Calls charged at local or mobile rate.)
– **IE** 01450 2655 (0.03 € per minute at peak. Off peak 0.0088 € per minute.)
When contacting the after-sales service, please quote the appliance's product number (E no.) and production number (FD) (see the inside of the door).
Set the programme selector to **Off** and remove the appliance plug from the socket.

● ◇ Start indicator lamp does not light up.	Mains plug plugged in? Programme selected? Check the socket fuse.
● Empty 🗑️ / Clean 🧼 🧼 indicator lights up.	Empty container for condensation → see page 4.
● Empty 🗑️ / Clean 🧼 🧼 indicator light flashes.	Clean the fluff filter under running water → see page 4. Clean the air cooler, if required → see page 6.
● Dryer does not start.	Has the ◇ Start button been pressed? Door closed? Programme set?
● Programme terminated shortly after the start.	Ambient temperature greater than 5 °C?
● Water is leaking out.	Make sure the dryer is level.
● The door opens by itself.	Push the door closed until you hear it engage.
● The required degree of dryness was not achieved or the drying time was too long.	Clean the fluff filter under running water → see page 4. Empty the container for condensation. Ambient temperature higher than 35 °C → ventilate the room. Air inlet may be blocked → clear obstruction. Unsuitable programme selected? → see page 7. Dryer installed too closely to other objects? Provide adequate air circulation. Mains failure → Restart the dryer. Fine layer of limescale on the moisture sensors. Clean the sensors → see page 6.
● Laundry damp.	Use the next drying programme up or use the timed programme as a supplement → see page 7. Warm laundry feels damper than it really is!
● The humidity in the room has increased significantly.	Make sure the room is sufficiently ventilated. Air inlet blocked? → Clear obstruction. Make sure that the air cooler is inserted.
● One or more indicator lights are flashing.	Clean the fluff filter and air cooler → see page 4/6. Check the installation conditions → see page 8. Switch off, allow to cool, switch back on and restart the programme.
● Power failure.	Remove laundry from the dryer immediately and spread out. This allows the heat to dissipate. Be careful as the door, the drum and the laundry may be hot.

Safety instructions



- Emergency ONLY use the dryer...**
- Pull the appliance plug out of the socket immediately or disconnect the fuse.
 - in rooms inside the house.
 - use for drying fabrics.
- The dryer must NEVER...**
- be used for other purposes than those described above.
 - be modified in terms of its technology or attributes.
- Dangers**
- The dryer must not be used by children or persons who have not been instructed in its use.
 - Do not leave children unsupervised near the dryer.
 - Keep pets away from the dryer.
 - Remove all objects from the pockets of garments. Pay particular attention to cigarette lighters → **risk of explosion.**
 - Do not lean or sit on the door → **risk of tipping.**
 - Open the door with care. Hot steam may escape.
- Installation**
- Fasten down loose leads → **risk of tripping.**
 - Do not operate the dryer where there is a risk of frost.
- Mains connection**
- Connect the dryer according to specifications to an AC earthed socket, as otherwise it cannot be guaranteed that the appliance is completely safe.
 - The cable cross-section must be sufficient.
 - Only use earth-leakage circuit breakers with the following symbol:
 - The appliance plug and socket must be compatible.
 - Do not use multiple plugs/couplings and/or extension cables.
 - Do not touch or hold the appliance plug with wet hands → **risk of electric shock.**
 - Never pull the appliance plug out of the socket by its cable.
 - Do not damage the mains lead → **risk of electric shock.**
- Operation**
- Only load the drum with items of laundry. Check what has been loaded before switching the dryer on.
 - Do not use the dryer if the laundry has been in contact with solvents, oil, wax, grease or paint (e.g. hair setting spray, nail polish remover, stain remover, cleaning solvent, etc.) → **fire/explosion hazard.**
 - The tumble dryer is not to be used if industrial chemicals have been used for cleaning
 - Hazard due to dust (e.g. coal dust, flour): do not use the dryer → **risk of explosion.**
 - Do not turn off the dryer until the drying process ends, unless the laundry will be removed quickly and spread out, so that the heat can dissipate.
 - Do not put laundry containing foamed material/rubber in the dryer → elastic material may be destroyed and the dryer may be damaged due to possible deformation of the foamed material.
 - Light things, such as long hair, may be sucked into the air inlet of the dryer → **Risk of injury.**
 - Final part of a tumble dryer cycle occurs without heat (cool down cycle), to ensure that the items are left at a temperature that ensures that the items will not be damaged.
 - Switch off the dryer once the programme has ended.
 - The exterior of the appliance's rear panel becomes very hot during operation. Never touch the hot surface of the appliance's rear panel. Keep children away from the appliance → **Risk of burns.**
 - The water from condensation is not drinking water and may be contaminated with fluff.
- Defect**
- Do not use the dryer if it is defective or if you suspect that it is. Repairs must only be carried out by the after-sales service.
 - Do not use the dryer with a faulty mains cable. In order to avoid risk, have the mains lead replaced only by our after-sales service.
- Spare parts**
- Only use genuine spare parts and accessories for safety reasons.
- Disposal**
- Dryer: pull out the mains plug, **then** cut the mains cable from the appliance. Dispose of the appliance at a public disposal facility.
 - Packaging: Do not allow children access to items of packaging → **risk of suffocation.**
 - All materials are environmentally friendly and reusable. Dispose of in an environmentally responsible manner.



SIEMENS

Tumble dryer

WT44C101GC

siemens-home.com/welcome

en Operating and installation instructions



Observe the safety instructions on page 11.



Read these instructions and the separate **Energy-saving mode** instructions before operating the dryer.

Register
your
product
online