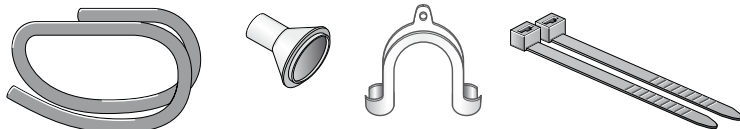


# Changing the condensation drain

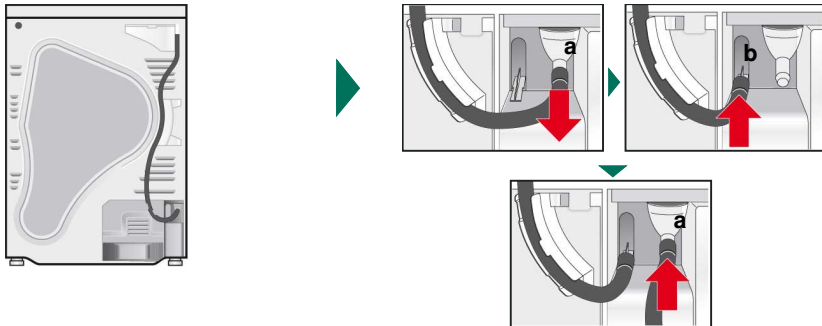
**i** The condensation from the dryer can either be discharged into the condensate container or led away via a connection to the waste water system. The method installed at the factory is that the condensation from the dryer is discharged into the condensate container. If the condensate drain is installed a rest amount of water remains in the condensate container due to the self cleaning function. To change the method of draining the condensation, you can take the following steps:

1



Remove the accessories from the dryer drum.

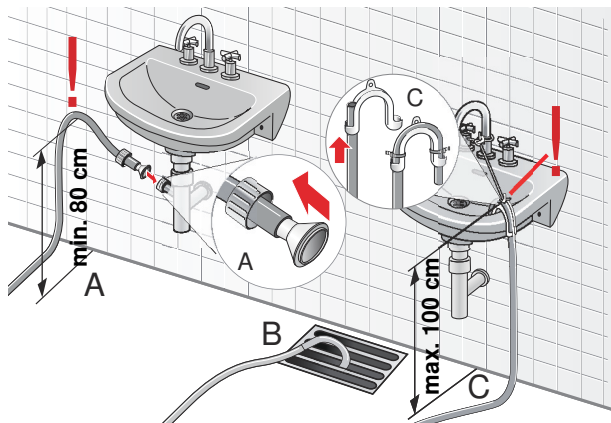
2



When the dryer is delivered direct from the factory, the hose for discharging the condensation into the condensate container is fastened to the adapter.

Disconnect the hose from the adapter (a) and place it in the 'parked' position on the hose clip (b). Then remove the drain hose from the accessory and fasten it to the empty adapter (a).

3

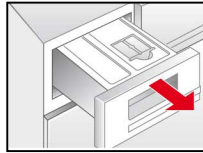


Depending on how you connect the hose (A, B or C), fit the drain hose with the remaining accessories. Check the dimensions.

**i** Do not plug the drain of the wash basin and check that the water can flow away quickly. Blocked water can be drawn back into the dryer and cause damage. To prevent leaks or water damage, secure the drain hose against slipping out of position. Do not kink the drain hose. The difference in height between the installation surface and the drain should not exceed 100 cm. The minimum height for a drain in a siphon is 80 cm.

# Changing the condensation drain

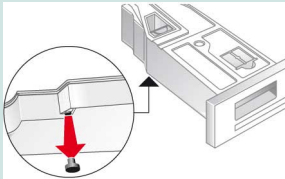
4



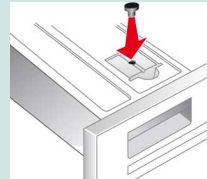
Fully pull out the condensate container.

**Point 5 applies only to dryers with no steam programmes. For dryers with steam programmes, continue with point 6.**

5

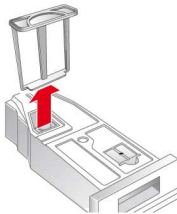


Turn the condensate container by 180° onto its underside and release the stopper which is fitted there.

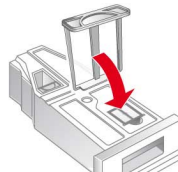


Turn the container back by 180° and press the stopper into the opening on the upper side of the condensate container.

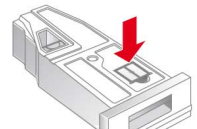
6



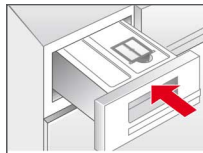
Pull the filter out of its snap-in lock.



Place the filter into the indentation of the condensate container.



7



Push the container back in until it locks into place.

**i**

The condensation is now discharged via the drain hose into the waste water system or into a wash basin. To change this arrangement so that the condensation again drains away into the condensate container, carry out the steps described above in the reverse order.

9406/ 9000732172

