





After drying...		iron laundry	lightly iron laundry	do not iron laundry	mangle laundry
TEXTILE TYPE AND INFORMATION					
PROGRAMMES					
**algodón/algodão (Cottons/Coloureds)	max. 7 kg	Hard-wearing fabrics, boil-resistant fabrics made of cotton or linen.			
	max. 3.5 kg	Non-iron laundry made of synthetic fibres and blended fabric, easy-care cotton.			
**sintéticos (Easy-Care)	seco para (Iron Dry)	Fabrics suitable for ironing (iron fabrics in order to avoid creasing).			
	seco para guardar (Cupboard Dry)	Single-layer fabrics.			
acabado lanalã (Woollens Finish)	seco para guardar (Cupboard Dry Plus)	Fabrics made of thick, multilayered items of clothing.			
	max. 3 kg	Woollen fabrics suitable for washing machines. Fabrics become fluffier but not dry.			
microfibras (Outdoor)	max. 1.5 kg	Remove fabrics once the programme has ended and allow to dry.			
	max. 1 kg	Fabrics with membrane coating, water-repellent fabrics, functional clothing, fleece fabrics (dry jackets/trousers with removable internal lining separately).			
Tencerallingerie (Dessous)	max. 2 kg	Lingerie made of synthetic fibres, cotton or blended fabric.			
	max. 3 kg	Laundry made of synthetic fibres, cotton or blended fabrics (for example) that needs to be dried quickly. The values may differ from the those specified depending on the type of fabric, mixture of laundry to be dried, residual moisture in the fabric and loading capacity.			
express 40 min (Rapid 40)		Predried, multi-layered, sensitive fabrics made of acrylic fibres, or separate small items of laundry.			
20 min caliente/quente (20 min warm)		Also for subsequent drying.			

\*For Cottons/Coloureds and Easy-Care programmes only  
\*\*Dryness levels can be selected individually → Cupboard Dry and Iron Dry (depending on the model)  
Degree of dryness can be finely adjusted; multi-layered textiles require a longer drying time than single-layered items of clothing. Recommendation: Dry separately.

9112 / 9000729062	Siemens Electrogeräte GmbH Carl-Wery-Str. 34 81739 München/Germany	WT46E3F4EE
-------------------	--	------------

## Installation

- Delivery specification: dryer, instructions for installation and use, woollens basket (depending on model).
- Check dryer for transport damage.
- The dryer is very heavy. Do not attempt to lift it on your own.
- Be careful to avoid sharp edges.
- Do not lift the dryer by any of the protruding parts (e.g. the door) as they may break off.
- Do not set up in a room that is susceptible to frost.
- Freezing water may cause damage.
- If in doubt, have the appliance connected by an expert.

### 1.

#### Setting up the dryer

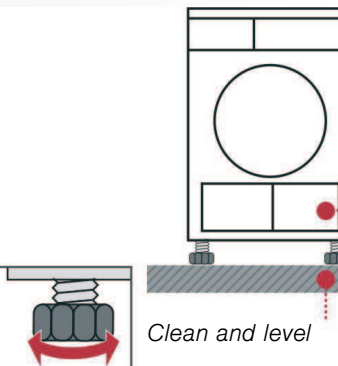
- The appliance plug must always be accessible.
- Ensure that the appliance is installed on a clean, level and solid surface.
- Keep the cooling grille at the front of the dryer unobstructed.
- Keep the area around the dryer clean.
- Make the dryer level using the threaded feet and a spirit level.
- Do not remove the threaded feet under any circumstances.



Do not set up the dryer behind a door or sliding door as this may obstruct or prevent the dryer door from opening. This will prevent a potentially fatal danger to children from locking themselves in.



Take all accessory parts out of the drum.  
The drum must be empty.



### 2.

#### Mains connection see safety instructions → Page 11.

- Connect to an AC earthed socket. If in doubt have the socket checked by an expert.
- The mains voltage and the voltage shown on the rating plate (→ Page 9) must correspond.
- The connected load and necessary fuse protection are specified on the rating plate.

### 3.

#### Converting the installed load Note the fuse protection of the socket.

10/16 Amps

turn to **o (Off)**

1 x to the right

Press and hold selection then turn 3 x to the right

Set amperage

turn to **o (Off)**

Feedback:

10 A	L o	off
16 A	h i	flashes

## Frost protection / Transport



#### Preparation

1. Empty the condensation container → page 4.
2. Select any programme using the programme selector.
3. Press the **inicio/stop (start/stop)** button → condensation is pumped into the container.
4. Wait 5 min., and then empty the condensation container again.
5. Turn the programme selector to **o (Off)**.

## Technical data

● <b>Dimensions (DxWxH)</b>	60 x 60 x 85 cm (height adjustable)
<b>Weight</b>	approximately 45 kg
<b>Max. capacity</b>	7 kg
<b>Condensation container</b>	4.2 l
<b>Connection voltage</b>	
<b>Connected load</b>	
<b>Fuse protection</b>	see appliance rating plate
<b>Ambient temperature</b>	
<b>Product number/ Production number</b>	

You can find the rating plate on the back of the dryer.

### Consumption rates

These are guide values determined under standard conditions. Fluctuations up to 10% are possible. The value on the label is achieved at the maximum heat setting.

algodón/algodão (Cottons/Coloureds) <b>7 kg</b>	Spin speed in rpm (residual moisture)	Drying time in min.**		Energy consumption in kWh**	
		10 A	16 A	10 A	16 A
seco para guardar (Cupboard Dry)*	1400 (approx. 50 %) 1000 (approx. 60 %) 800 (approx. 70 %)	112 131 150	89 104 120	3.36 3.92 4.48	3.36 3.92 4.48
seco para (Iron Dry)*	1400 (approx. 50 %) 1000 (approx. 60 %) 800 (approx. 70 %)	93 111 130	69 82 94	2.42 3.06 3.70	2.42 3.06 3.70
<b>sintéticos (Easy-Care) 3.5 kg</b>					
seco para guardar (Cupboard Dry)*	800 (approx. 40 %) 600 (approx. 50 %)	48 60	42 51	1.35 1.65	1.35 1.65

\*Test program according to DIN EN 61121.  
\*\*The values may differ from the those specified depending on the type of fabric, mixture of laundry to be dried, residual moisture in the fabric and loading capacity.

### Drum interior light (depending on model) (bulb E14, 25 W)

The drum is illuminated after the door is opened or closed, and also after the programme is started. It goes out automatically. Replacing the bulb → Page 10.

## Optional accessories

(order from the after-sales service using the order number)

WZ 20160	<b>Connection fittings for condensation outlet</b> The condensation is conveyed directly via a hose.
WZ 20310	<b>Washer-dryer stack connection set</b> The dryer can be placed on top of a suitable washing machine with the same width and depth to save space. This connection set <b>must</b> always be used to secure the dryer to the washing machine.
WZ 20300	Same as WZ 20310, but with pull-out worktop.
WZ 20290	<b>Installation underneath the worktop</b> <b>Risk of electric shock!</b> Instead of the appliance covering plate, you must have a metal cover fitted by an expert.

## What to do if ...



If you cannot rectify a fault yourself (e.g. switching off/on), please contact our after-sales service. We will always find an appropriate solution and will avoid unnecessary visits by engineers. Trust the expertise of the manufacturer and rest assured that the repair will be carried out by trained service technicians using original spare parts. The contact details of your local after-sales service can be found in the enclosed **after-sales service** directory, or by calling one of these numbers:  
– **GB** 0844 8928999 (Calls from a BT landline will be charged at up to 3 pence per minute. A call set-up fee of up to 6 pence may apply.)  
– **IE** 01450 2655

When contacting the after-sales service, please quote the appliance's product number (E no.) and production number (FD) (see the inside of the door).  
Set the programme selector to **o (Off)** and remove the appliance plug from the socket.

●	The <b>inicio/stop (start/stop)</b> indicator lamp does not light up.	Mains plug plugged in? Programme selected?
●	The <b>limp. depósito</b> (Empty water) and <b>inicio/stop (start/stop)</b> indicator lamp flash.	Empty the condensation container. If featured, check hose for condensation outlet.
●	The <b>limp.filtro</b> (Clean filter) and <b>inicio/stop (start/stop)</b> indicator lamp flash.	Clean the fluff filter and/or air cooler → Page 4/6.
●	Dryer does not start.	<b>inicio/stop (start/stop)</b> button selected? Door closed? Programme set? Ambient temperature greater than 5 °C?
●	Water is running out.	Align dryer horizontally. Clean air cooler seal.
●	The door opens by itself.	Push the door closed until you hear it engage.
●	Creasing.	Laundry load exceeded? Remove articles of clothing immediately after the end of the programme, hang up and pull into shape. Unsuitable programme selected → Page 7.
●	Drying result is not satisfactory (laundry feels too damp).	Warm laundry feels damper than it actually is. The selected programme does not suit the load. Use another drying programme or, in addition, select the time programme → Page 7. Use fine adjustment for the drying result → Page 5/6. Fine layer of limescale on the humidity sensors → Clean the humidity sensors → Page 9. Programme termination, e.g. tank full, mains power supply failure, door open or maximum drying time reached.
●	Drying time too long.	Rinse the fluff filters under running water → Page 4. Insufficient supply of air → ensure that air can circulate. Air inlet possibly blocked → Clear inlet → Page 8. Ambient temperature higher than 35 °C → ventilate the room.
●	The humidity in the room increases significantly.	Make sure the room is sufficiently ventilated.
●	Mains failure.	Remove laundry from the dryer immediately and spread out. This allows the heat to dissipate.
●	One or more indicator lights for programme status are flashing.	Clean filter and air cooler → Page 4/6. Check installation conditions → Page 8. Switch off, leave to cool down, switch on again, restart programme.
●	The interior light is not working (depending on model).	Pull out the appliance plug, remove the cover cap in the interior above the door (use Torx 20 screw driver) and replace the bulb. Close the cover cap. Never operate the dryer without a cover cap.

## Safety instructions



<b>Emergency</b> <b>ONLY use the dryer...</b>	– Pull the appliance plug out of the socket immediately or disconnect the fuse.
<b>The dryer must NEVER...</b>	– in rooms inside the house.
<b>Dangers</b>	– to dry fabrics.
	– be used for other purposes than those described above.
	– be modified in terms of its technology or attributes.
	– The dryer must not be used by children or persons who have not been instructed in its use.
	– Do not leave children unsupervised near the dryer.
	– Keep pets away from the dryer.
	– Remove all objects from pockets.
	– Make especially sure that cigarette lighters are removed as they constitute an → <b>explosion hazard</b> .
	– Do not lean or sit on the door → <b>risk of tipping</b> .
<b>Installation</b>	– Secure loose cables → <b>tripping hazard</b> .
	– Do not operate the dryer if there is a risk of frost.
<b>Mains connection</b>	– Connect the dryer according to specifications to an AC earthed socket, as otherwise it cannot be guaranteed that the appliance is completely safe.
	– The cable cross-section must be sufficient.
	– Only use earth-leakage circuit breakers with the following symbol:
	– The appliance plug and socket must be compatible.
	– Do not use multiple plugs/couplings and/or extension cables.
	– Do not hold the appliance plug with wet hands → <b>risk of electric shock</b> .
	– Never pull the appliance plug out of the socket by its cable.
	– Do not damage the mains lead → <b>risk of electric shock</b> .
<b>Operation</b>	– Only load the drum with laundry.
	– Check the contents before you switch the dryer on.
	– Do not use the dryer if the laundry has been in contact with solvents, oil, wax, grease or paint (e.g. hair setting spray, nail polish remover, stain remover, cleaning solvent, etc.) → <b>fire/explosion hazard</b> .
	– Dust (e.g. coal dust, flour) poses a danger: do not use the dryer → <b>explosion hazard</b> .
	– Do not put laundry containing foamed material/rubber in the dryer → elastic material may be destroyed and the dryer may be damaged due to possible deformation of the foamed material.
	– Switch off the dryer once the programme has ended.
	– Condensation is not drinking water and may be contaminated with fluff.
<b>Defect</b>	– Do not use the dryer if it is defective or if you suspect it is.
	– Repairs must only be carried out by the after-sales service.
	– Do not use the dryer if the mains cable is defective. To avoid danger, only have the defective mains cable replaced by the after-sales service.
	– Always pull the mains plug out of the socket before changing the bulb for the interior light → <b>risk of electric shock</b> .
<b>Spare parts</b>	– Only use genuine spare parts and accessories for safety reasons.
<b>Disposal</b>	– Dryer: pull out the appliance plug, <b>then</b> cut off the mains cable from the appliance.
	– Dispose of at municipal waste disposal facility.
	– Packaging: do not leave children alone with packing parts → <b>risk of suffocation</b> .
	– All materials are environmentally sound and can be reused.
	– Dispose of in an environmentally-responsible manner.



Observe the safety instructions on page 11.

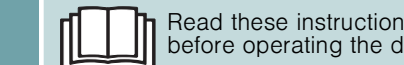


## Tumble dryer

## Instructions for installation and use

en

SIEMENS



Read these instructions before operating the dryer.





Inspecting the dryer

Connecting the mains plug

Loading laundry

asket"

the programme

rying programme ...

idual requirements

sensitive and only  
atched lightly.

o (start/stop) button

the dryer with  
inserted!

hat require  
amide, elastane

ing phase once

ramme.

## Drying



## Drying

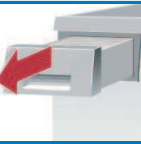


### Emptying condensation

Empty container **after** each drying operation!

1. Pull out condensation container keeping it horizontal.
2. Pour out condensation.
3. Always push container in fully until it clicks into place.

If **limp. depósito** (Empty water) flashes in the display panel → *What to do if...*, Page 10.



### Cleaning the fluff filter

Clean the fluff filter **after** each drying operation.

1. Open the door, remove fluff from door/door area.
2. Pull out and fold open the fluff filter.
3. Remove the fluff (by wiping the filter with your hand).  
If the fluff filter is very dirty or blocked, rinse with warm water and dry thoroughly.
4. Close and reinsert the fluff filter.



### Switching off the dryer

Turn the programme selector to **o (Off)**.  
Do not leave laundry in the dryer.



### Removing the laundry

The automatic anti-crease function causes the drum to move at specific intervals, the washing remains loose and fluffy for an hour (two hours if the additional **menos** (Less Ironing) function is also selected-*depending on model*).

**Programme end** once lights up in the display.



**Interrupt programme** removing or adding laundry.



The drying cycle can be interrupted for a brief period so that laundry may be added or removed. The programme selected must then be resumed and completed.



**Never switch the dryer off before the drying process has ended.**  
**Drum and door may be hot!**

1. Open door, the drying process is interrupted.
2. Load or remove laundry and close door.
3. If required, select a new programme and additional functions.
4. Press the **inicio/stop (start/stop)** button.

# Information on laundry ...



## Labelling of fabrics

Follow the manufacturer's care information.

- ☑ Drying at normal temperature.
- ☑ Drying at low temperature → also select **delicado** (Low Heat).
- ☒ Do not machine dry.



Observe safety instructions without fail → Page 11!

Do not tumble-dry the following fabrics for example:

- Impermeable fabrics (e.g. rubber-coated fabrics).
- Delicate materials (silk or curtains made from synthetic material) → they may crease
- Laundry contaminated with oil.



## Drying tips

- To ensure a consistent result, sort the laundry by fabric type and drying programme.
- Always dry very small items (e.g. baby socks) together with large items of laundry (e.g. hand towel).
- Close zips, hooks and eyelets, and button up covers.
- Tie fabric belts, apron strings, etc. together
- Do not over-dry easy-care laundry → risk of creasing!  
Allow laundry to finish drying in the air.
- Do not dry woollens in the dryer, only use to freshen them up → Page 7, **acabado lana/lã** (Woollens Finish) Programme (depending on model).
- Do not iron laundry immediately after drying, fold items up and leave for a while → the remaining moisture will then be distributed evenly.
- The drying result depends on the type of water used during washing. → Fine adjustment of the drying result → Page 5/6.
- Machine-knitted fabrics (e.g. T-shirts or jerseys) often shrink the first time they are dried → do not use the **extra seco para guardar** (Cupboard Dry Extra) programme.
- Starched laundry is not always suitable for dryers → starch leaves behind a coating that adversely affects the drying operation.
- Use the correct dosage of fabric softener as per the manufacturer's instructions when washing the laundry to be dried.
- Use the timer programme for small loads → this improves the drying result.

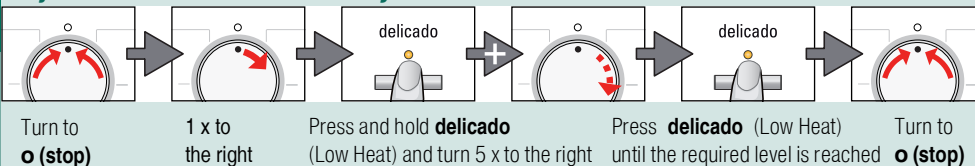
## Environmental protection / Energy-saving tips

- Before drying, spin the laundry thoroughly in the washing machine → the higher the spin speed the shorter the drying time will be (consumes less energy), also spin easy-care laundry.
- Put in, but do not exceed, the maximum recommended quantity of laundry → programme overview → Page 7.
- Make sure the room is well ventilated during drying.
- Do not obstruct or seal up the air inlet.
- Keep the air cooler clean → Page 6 "Care and cleaning".

# Fine adjustment of the drying result



## Adjustment of the levels of dryness



# Fine adjustment of the drying result



L:00, L:01, L:02, L:03 are shown in sequence  
Short signal when changing from L:03 to L:00, otherwise long signal.

L:01

## Care and cleaning



Only when switched off!

### Dryer housing, control panel, air cooler, moisture sensors

- Wipe with a soft, damp cloth.
- Do not use harsh cleaning agents and solvents.
- Remove detergent and cleaning agent residue immediately.
- During drying, water may collect between the door and seal.  
This does not affect your dryer's functions in any way.

Clean the protective filter 5 - 6 times a year  
or if **limp. filtro** (Clean filter) flashes after cleaning the fluff filter.

### Air cooler / Protective filter

When cleaning, only remove the protective filter. Clean the air cooler behind the protective filter once a year.

- Allow the dryer to cool.
- Residual water may leak out, so place an absorbent towel underneath the maintenance door.

1. Unlock the maintenance door.
2. Open the maintenance door fully.

3. Turn both locking levers towards each other.
4. Pull out the protective filter/air cooler.



Do not damage the protective filter or air cooler.  
Clean with warm water only. Do not use any hard or sharp-edged objects.

5. Clean the protective filter/air cooler thoroughly, Allow to drip dry.
6. Clean the seals.
7. Re-insert the protective filter/air cooler, with the handle facing down.
8. Turn back both locking levers.
9. Close the maintenance door until the lock clicks into place.

### Moisture sensors

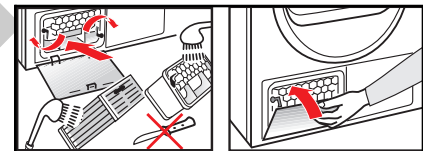
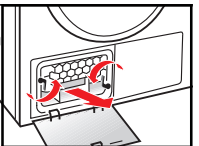
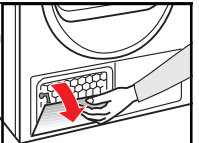
The dryer is fitted with stainless steel moisture sensors. The sensors measure the level of moisture in the laundry. After a long period of operation, a fine layer of limescale may form on the sensors.

1. Open the door and clean the moisture sensors with a damp sponge which has a rough surface.



Do not use steel wool or abrasive materials.

limp. filtro  
limp. depósito



Sort the laundry according to type of textile and fabric. Fabrics must be suitable for tumble drying.

After drying...	iron laundry	lightly iron laundry	do not iron laundry	mangle laundry
TEXTILE TYPE AND INFORMATION				
<b>**algodón/algodão</b> (Cottons/Coloureds)	max. 7 kg	Hard-wearing fabrics, boil-resistant fabrics made of cotton or linen.		
<b>**sintéticos</b> (Easy-Care)	max. 3.5 kg	Non-iron laundry made of synthetic fibres and blended fabric, easy-care cotton.		
seco para  (Iron Dry)		Fabrics suitable for ironing (iron fabrics in order to avoid creasing).		
seco para guardar (Cupboard Dry)		Single-layer fabrics.		
*extra seco para guardar (Cupboard Dry Plus)		Fabrics made of thick, multilayered items of clothing.		
<b>acabado lana/lã</b> (Woollens Finish)	max. 3 kg	Woollen fabrics suitable for washing machines. Fabrics become fluffier but not dry. Remove fabrics once the programme has ended and allow to dry.		
<b>microfibras</b> (Outdoor)	max. 1.5 kg	Fabrics with membrane coating, water-repellent fabrics, functional clothing, fleece fabrics (dry jackets/trousers with removable internal lining separately).		
<b>lencería/lingerie</b> (Dessous)	max. 1 kg	Lingerie made of synthetic fibres, cotton or blended fabric.		
<b>express 40 min</b> (Rapid 40)	max. 2 kg	Laundry made of synthetic fibres, cotton or blended fabrics (for example) that needs to be dried quickly. The values may differ from the those specified depending on the type of fabric, mixture of laundry to be dried, residual moisture in the fabric and loading capacity.		
<b>20 min caliente/quente</b> (20 min warm)	max. 3 kg	Pre-dried, multi-layered, sensitive fabrics made of acrylic fibres, or separate small items of laundry. Also for subsequent drying.		

\*for **Cottons/Coloureds** and **Easy-Care** programmes only

\*\*Dryness levels can be selected individually → Cupboard Dry Plus, Cupboard Dry and Iron Dry (depending on the model).

Degree of dryness can be finely adjusted; multi-layered textiles require a longer drying time than single-layered items of clothing. Recommendation: Dry separately.

9112 / 9000729062



Siemens Electrogeräte GmbH  
Carl-Wery-Str. 34  
81739 München/Germany

WT46E3F4EE

## Installation

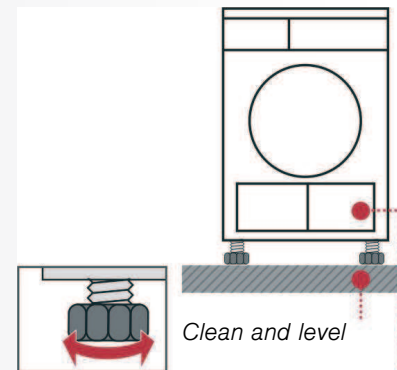
- Delivery specification: dryer, instructions for installation and use, woollens basket (depending on model).
- Check dryer for transport damage.
- The dryer is very heavy. Do not attempt to lift it on your own.
- Be careful to avoid sharp edges.
- Do not lift the dryer by any of the protruding parts (e.g. the door) as they may break off.
- Do not set up in a room that is susceptible to frost. Freezing water may cause damage.
- If in doubt, have the appliance connected by an expert.

### 1. Setting up the dryer

- The appliance plug must always be accessible.
- Ensure that the appliance is installed on a clean, level and solid surface.
- Keep the cooling grille at the front of the dryer unobstructed.
- Keep the area around the dryer clean.
- Make the dryer level using the threaded feet and a spirit level.  
Do not remove the threaded feet under any circumstances.



Take all accessory parts out of the drum.  
The drum must be empty.



Clean and level

Make sure that the air inlet remains unobstructed



Do not set up the dryer behind a door or sliding door as this may obstruct or prevent the dryer door from opening. This will prevent a potentially fatal danger to children from locking themselves in.

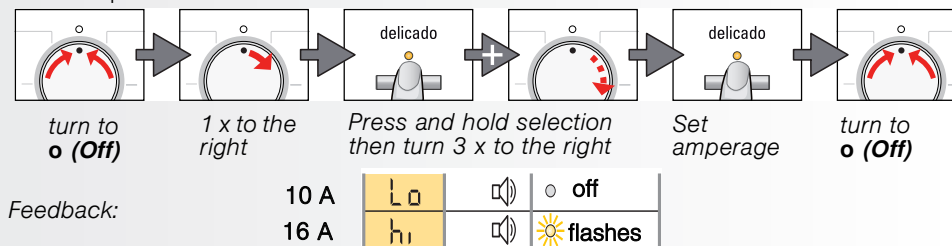
### 2. Mains connection

see safety instructions → Page 11.

- Connect to an AC earthed socket. If in doubt have the socket checked by an expert.
- The mains voltage and the voltage shown on the rating plate (→ Page 9) must correspond.
- The connected load and necessary fuse protection are specified on the rating plate.

### 3. Converting the installed load

Note the fuse protection of the socket.  
10/16 Amps



## Frost protection / Transport



Do not operate the dryer if there is a danger of frost.



### Preparation


1. Empty the condensation container → page 4.
2. Select any programme using the programme selector.
3. Press the **inicio**/stop (**start**/stop) button → condensation is pumped into the container.
4. Wait 5 min., and then empty the condensation container again.
5. Turn the programme selector to **o (Off)**.



Technical data

● <b>Dimensions (DxWxH)</b>	60 x 60 x 85 cm (height adjustable)
<b>Weight</b>	approximately 45 kg
<b>Max. capacity</b>	7 kg
<b>Condensation container</b>	4.2 l
<b>Connection voltage</b>	
<b>Connected load</b>	
<b>Fuse protection</b>	see appliance rating plate
<b>Ambient temperature</b>	
<b>Product number/ Production number</b>	

You can find the rating plate on the back of the dryer.

● <b>Consumption rates</b>	These are guide values determined under standard conditions. Fluctuations up to 10% are possible. The value on the label is achieved at the maximum heat setting.					
		Spin speed in rpm (residual moisture)		Drying time in min.**		Energy consumption in kWh**
				10 A	16 A	10 A 16 A
<b>algodón/algodão</b> (Cottons/Coloureds) <b>7 kg</b>	seco para guardar (Cupboard Dry)*	1400 (approx. 50 %)	112	89	3.36	3.36
		1000 (approx. 60 %)	131	104	3.92	3.92
		800 (approx. 70 %)	150	120	4.48	4.48
seco para  (Iron Dry)*		1400 (approx. 50 %)	93	69	2.42	2.42
		1000 (approx. 60 %)	111	82	3.06	3.06
		800 (approx. 70 %)	130	94	3.70	3.70
<b>sintéticos</b> (Easy-Care) <b>3.5 kg</b>	seco para guardar (Cupboard Dry)*	800 (approx. 40 %)	48	42	1.35	1.35
		600 (approx. 50 %)	60	51	1.65	1.65

\*Test program according to DIN EN 61121.

\*\*The values may differ from the those specified depending on the type of fabric, mixture of laundry to be dried, residual moisture in the fabric and loading capacity.

- **Drum interior light** (depending on model) (bulb E14, 25 W)  
The drum is illuminated after the door is opened or closed, and also after the programme is started. It goes out automatically. Replacing the bulb → Page 10.

Optional accessories (order from the after-sales service using the order number)

WZ 20160	<b>Connection fittings for condensation outlet</b> The condensation is conveyed directly via a hose.
WZ 20310	<b>Washer-dryer stack connection set</b> The dryer can be placed on top of a suitable washing machine with the same width and depth to save space. This connection set <b>must</b> always be used to secure the dryer to the washing machine.
WZ 20300	Same as WZ 20310, but with pull-out worktop.
WZ 20290	<b>Installation underneath the worktop</b> <b>Risk of electric shock!</b> Instead of the appliance covering plate, you must have a metal cover fitted by an expert.

What to do if ...



If you cannot rectify a fault yourself (e.g. switching off/on), please contact our after-sales service. We will always find an appropriate solution and will avoid unnecessary visits by engineers. Trust the expertise of the manufacturer and rest assured that the repair will be carried out by trained service technicians using original spare parts. The contact details of your local after-sales service can be found in the enclosed **after-sales service** directory, or by calling one of these numbers:


- **GB** 0844 8928999 (Calls from a BT landline will be charged at up to 3 pence per minute. A call set-up fee of up to 6 pence may apply.)
- **IE** 01450 2655

When contacting the after-sales service, please quote the appliance's product number (E no.) and production number (FD) (see the inside of the door).  
Set the programme selector to **o (Off)** and remove the appliance plug from the socket.

● The <b>inicio/stop (start/stop)</b> indicator lamp does not light up.	Mains plug plugged in? Programme selected?
● The <b>limp. depósito</b> (Empty water) and <b>inicio/stop (start/stop)</b> indicator lamp flash.	Empty the condensation container. If featured, check hose for condensation outlet.
● The <b>limp.filtro</b> (Clean filter) and <b>inicio/stop (start/stop)</b> indicator lamp flash.	Clean the fluff filter and/or air cooler → Page 4/6.
● Dryer does not start.	<b>inicio/stop (start/stop)</b> button selected? Door closed? Programme set? Ambient temperature greater than 5 °C?
● Water is running out.	Align dryer horizontally. Clean air cooler seal.
● The door opens by itself.	Push the door closed until you hear it engage.
● Creasing.	Laundry load exceeded? Remove articles of clothing immediately after the end of the programme, hang up and pull into shape. Unsuitable programme selected → Page 7.
● Drying result is not satisfactory (laundry feels too damp).	Warm laundry feels damper than it actually is. The selected programme does not suit the load. Use another drying programme or, in addition, select the time programme → Page 7. Use fine adjustment for the drying result → Page 5/6. Fine layer of limescale on the humidity sensors → Clean the humidity sensors → Page 9. Programme termination, e.g. tank full, mains power supply failure, door open or maximum drying time reached.
● Drying time too long.	Rinse the fluff filters under running water → Page 4. Insufficient supply of air → ensure that air can circulate. Air inlet possibly blocked → Clear inlet → Page 8. Ambient temperature higher than 35 °C → ventilate the room.
● The humidity in the room increases significantly.	Make sure the room is sufficiently ventilated.
● Mains failure.	Remove laundry from the dryer immediately and spread out. This allows the heat to dissipate.
● One or more indicator lights for programme status are flashing.	Clean filter and air cooler → Page 4/6. Check installation conditions → Page 8. Switch off, leave to cool down, switch on again, restart programme.
● The interior light is not working (depending on model).	Pull out the appliance plug, remove the cover cap in the interior above the door (use Torx 20 screw driver) and replace the bulb. Close the cover cap. Never operate the dryer without a cover cap.

# Safety instructions



- |                                |  |
|--------------------------------|--|
| <b>Emergency</b>               | <ul style="list-style-type: none"> <li>– Pull the appliance plug out of the socket immediately or disconnect the fuse.</li> </ul>  |
| <b>ONLY use the dryer...</b>   | <ul style="list-style-type: none"> <li>– in rooms inside the house.</li> <li>– to dry fabrics.</li> </ul>  |
| <b>The dryer must NEVER...</b> | <ul style="list-style-type: none"> <li>– be used for other purposes than those described above.</li> <li>– be modified in terms of its technology or attributes.</li> </ul>  |
| <b>Dangers</b>                 | <ul style="list-style-type: none"> <li>– The dryer must not be used by children or persons who have not been instructed in its use.</li> <li>– Do not leave children unsupervised near the dryer.</li> <li>– Keep pets away from the dryer.</li> <li>– Remove all objects from pockets.<br/>Make especially sure that cigarette lighters are removed as they constitute an <b>→ explosion hazard.</b></li> <li>– Do not lean or sit on the door <b>→ risk of tipping.</b></li> </ul>   |
| <b>Installation</b>            | <ul style="list-style-type: none"> <li>– Secure loose cables <b>→ tripping hazard.</b></li> <li>– Do not operate the dryer if there is a risk of frost.</li> </ul>   |
| <b>Mains connection</b>        | <ul style="list-style-type: none"> <li>– Connect the dryer according to specifications to an AC earthed socket, as otherwise it cannot be guaranteed that the appliance is completely safe.</li> <li>– The cable cross-section must be sufficient.</li> <li>– Only use earth-leakage circuit breakers with the following symbol: </li> <li>– The appliance plug and socket must be compatible.</li> <li>– Do not use multiple plugs/couplings and/or extension cables.</li> <li>– Do not hold the appliance plug with wet hands <b>→ risk of electric shock.</b></li> <li>– Never pull the appliance plug out of the socket by its cable.</li> <li>– Do not damage the mains lead <b>→ risk of electric shock.</b></li> </ul>                                |
| <b>Operation</b>               | <ul style="list-style-type: none"> <li>– Only load the drum with laundry.<br/>Check the contents before you switch the dryer on.</li> <li>– Do not use the dryer if the laundry has been in contact with solvents, oil, wax, grease or paint (e.g. hair setting spray, nail polish remover, stain remover, cleaning solvent, etc.) <b>→ fire/explosion hazard.</b></li> <li>– Dust (e.g. coal dust, flour) poses a danger: do not use the dryer <b>→ explosion hazard.</b></li> <li>– Do not put laundry containing foamed material/rubber in the dryer <b>→ elastic material may be destroyed and the dryer may be damaged due to possible deformation of the foamed material.</b></li> <li>– Switch off the dryer once the programme has ended.</li> <li>– Condensation is not drinking water and may be contaminated with fluff.</li> </ul> |
| <b>Defect</b>                  | <ul style="list-style-type: none"> <li>– Do not use the dryer if it is defective or if you suspect it is.<br/>Repairs must only be carried out by the after-sales service.</li> <li>– Do not use the dryer if the mains cable is defective. To avoid danger, only have the defective mains cable replaced by the after-sales service.</li> <li>– Always pull the mains plug out of the socket before changing the bulb for the interior light <b>→ risk of electric shock.</b></li> </ul>  |
| <b>Spare parts</b>             | <ul style="list-style-type: none"> <li>– Only use genuine spare parts and accessories for safety reasons.</li> </ul>   |
| <b>Disposal</b>                | <ul style="list-style-type: none"> <li>– Dryer: pull out the appliance plug, <b>then</b> cut off the mains cable from the appliance.<br/>Dispose of at municipal waste disposal facility.</li> <li>– Packaging: do not leave children alone with packing parts <b>→ risk of suffocation.</b></li> <li>– All materials are environmentally sound and can be reused.<br/>Dispose of in an environmentally-responsible manner.</li> </ul>   |



Observe the safety instructions on page 11.



**Tumble dryer**

## Instructions for installation and use

en

**SIEMENS**



Read these instructions  
before operating the dryer.