



TE 506../TE 509..

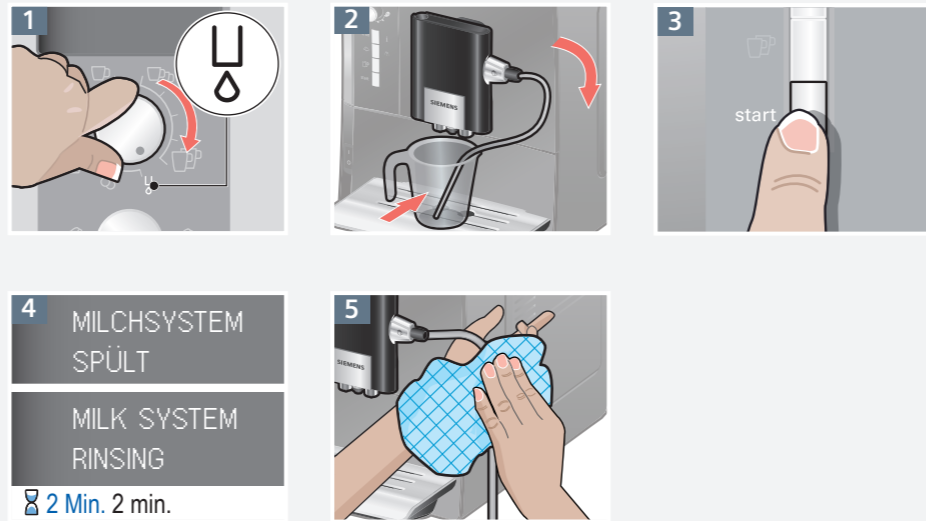
siemens-home.com/welcome

de Kurzanleitung
en Quick reference guide

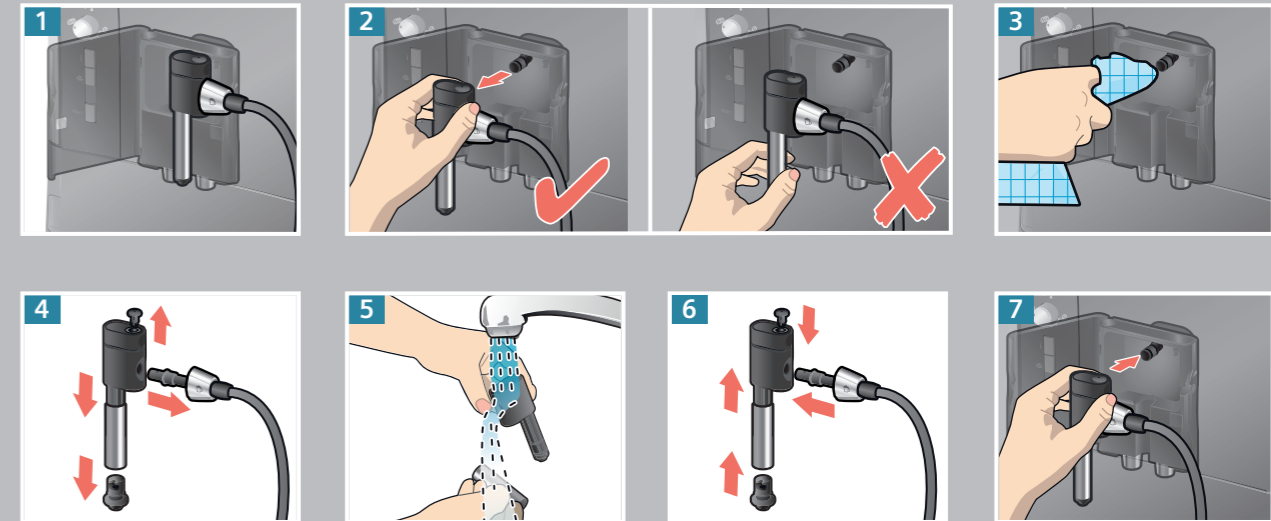
Beispiel Zubereitung
CAPPUCCINO
Sample Preparation
CAPPUCCINO



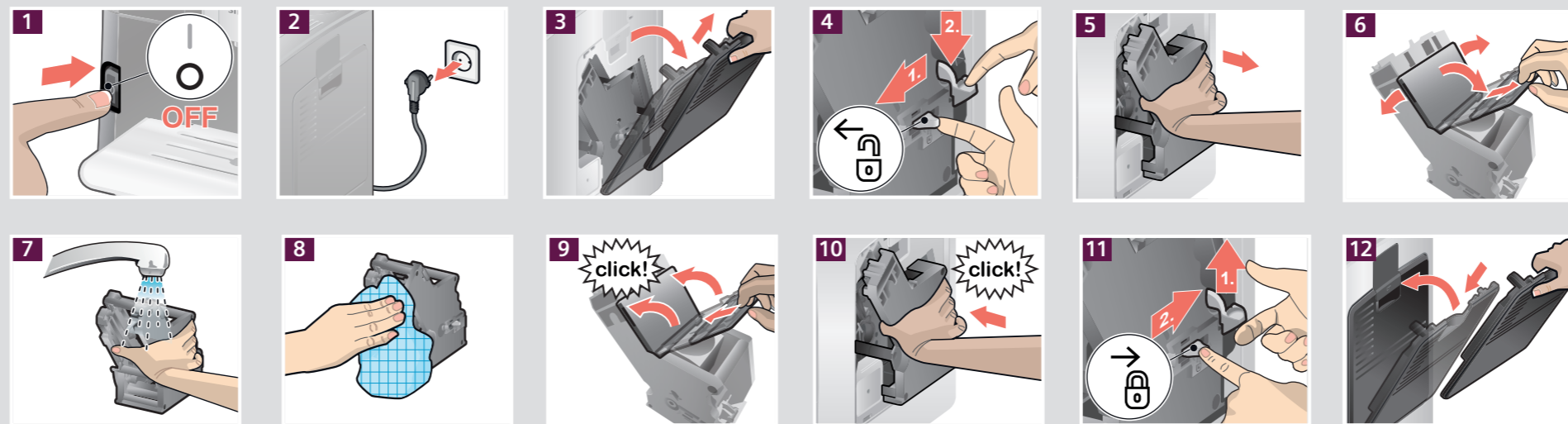
Service-Programm
**KURZSPÜLEN
MILCHSYSTEM**
Service Program
**SHORT RINSE
MILK SYSTEM**



Reinigen
MILCHSYSTEM
Clean
MILK SYSTEM



Reinigen
BRÜHEINHEIT
Clean
BREWING UNIT



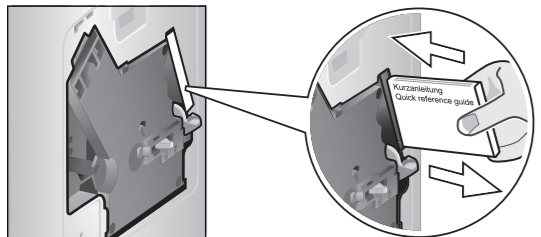
Bitte unbedingt die Sicherheits-
hinweise in der Gebrauchsanleitung
lesen und beachten.

Please read the safety information
in the instruction manual carefully.



Aufbewahrungsfach für
Kurzanleitung

Storage compartment for
quick reference guide



Service-Programm
CALC'N'CLEAN
 Service Program
CALC'N'CLEAN

1 CALC'N'CLEAN NOTWENDIG! CALC'N'CLEAN REQUIRED!	2 	3 double shot 3 Sek./sec. off i	4 START CALC'N'CLEAN START CALC'N'CLEAN start	5 	6 	7 	8
9 max. 35°C-37°C 0,5 L 17 fl.oz.	10 0,5 L 17 fl.oz.	11 start	12 ca. 22 Min. approx. 22 min.	13 max.	14 start ca. 10 Min. approx. 10 min	15 	16

Service-Programm
ENTKALKEN
 Service Program
DESCALE

1 ENTKALKEN NOTWENDIG! DESCALE REQUIRED!	2 	3 double shot 3 Sek./sec. off i	4 START ENTKALKEN START DESCALING	5 start	6 	7 	8
9 max. 35°C-37°C 0,5 L 17 fl.oz.	10 0,5 L 17 fl.oz.	11 start	12 ca. 22 Min. approx. 22 min.	13 max.	14 start ca. 3 Min. approx. 3 min	15 	16

Service-Programm
REINIGEN
 Service Program
CLEAN

1 REINIGEN NOTWENDIG! CLEAN REQUIRED!	2 	3 double shot 3 Sek./sec. off i	4 START REINIGEN START CLEANING	5 start	6
7 	8 	9 	10 start ca. 8 Min. approx. 8 min.	11 	12