



TE 503..

siemens-home.com/welcome

de Kurzanleitung
en Quick reference guide

Beispiel Zubereitung
CAPPUCCINO
Sample Preparation
CAPPUCCINO

1. max. (Maximum water level)
2. Coffee beans
3. ON (Power on)
4. ESPRESSO (Selection)
5. Milch milk (Milk selection)
6. Milk frother
7. off (Stop)
8. GERÄT HEIZT / SYSTEM HEATING (Heating)
9. SCHÄUMER ZIEHEN / PULL MILK FROTHER (Pull frother)
10. Milk frother
11. Milch milk (Milk selection)
12. Milk frother
13. Milch milk (Milk selection)
14. ESPRESSO (Selection)
15. double shot (Double shot selection)
16. start (Start)
17. Milch milk (Milk selection)

Service-Programm
**KURZSPÜLEN
MILCHSYSTEM**
Service Program
**SHORT RINSE
MILK SYSTEM**

1. Milk frother
2. Milk frother
3. start (Start)
4. Milk frother
5. MILCHSYSTEM SPÜLT / MILK SYSTEM RINSING (2 Min. 2 min.)
6. Milk frother
7. Wiping with a cloth

Reinigen
MILCHSYSTEM
Clean
MILK SYSTEM

1. Milk frother
2. Milk frother (Correct vs. incorrect)
3. Wiping with a cloth
4. Milk frother
5. Wiping with a cloth
6. Milk frother
7. click! (Click sound)

Reinigen
BRÜHEINHEIT
Clean
BREWING UNIT

1. OFF (Power off)
2. Unplugging
3. Brewing unit
4. 1, 2 (Cleaning steps)
5. Brewing unit
6. Brewing unit
7. Wiping with a cloth
8. Wiping with a cloth
9. click! (Click sound)
10. click! (Click sound)
11. 1, 2 (Cleaning steps)
12. Brewing unit



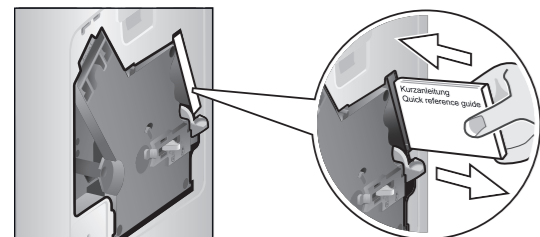
Bitte unbedingt die Sicherheits-
hinweise in der Gebrauchsanleitung
lesen und beachten.

Please read the safety information
in the instruction manual carefully.



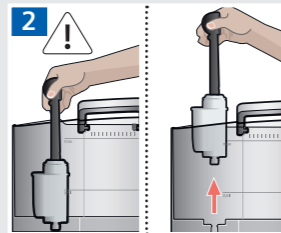
Aufbewahrungsfach für
Kurzanleitung

Storage compartment for
quick reference guide

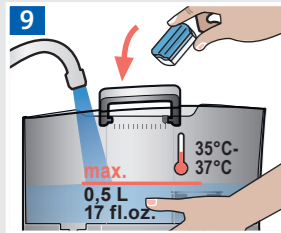
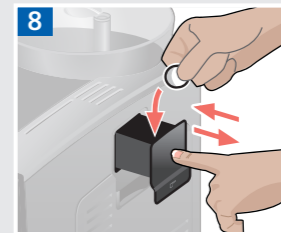


Service-Programm
CALC'N'CLEAN
Service Program
CALC'N'CLEAN

1 CALC'N'CLEAN
NOTWENDIG!
CALC'N'CLEAN
REQUIRED!



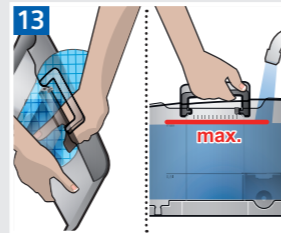
4 START
CALC'N'CLEAN
start
START
CALC'N'CLEAN



10 start
ca. 10 Min.
approx. 10 min.



12 ca. 12 Min.
approx. 12 min.



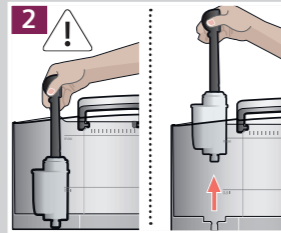
14 start
ca. 30 Sek.
approx. 30 sec.

15 ca. 8 Min.
approx. 8 min.

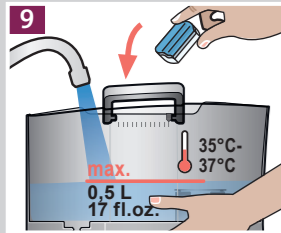
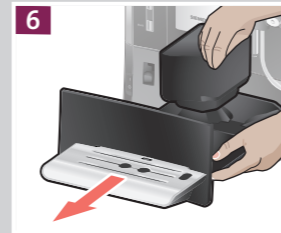
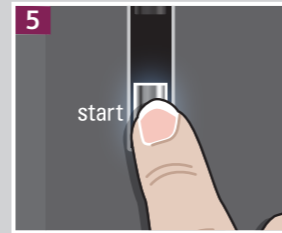


Service-Programm
ENTKALKEN
Service Program
DESCALE

1 ENTKALKEN
NOTWENDIG!
DESCALE
REQUIRED!



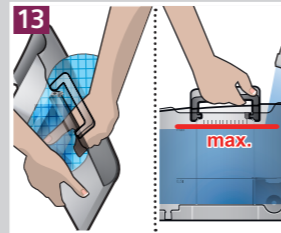
4 START
ENTKALKEN
START
DESCALE



10 start
ca. 10 Min.
approx. 10 min.



12 ca. 12 Min.
approx. 12 min.



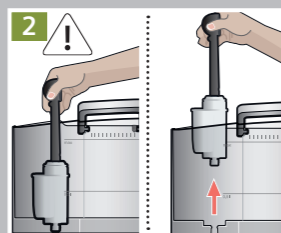
14 start
ca. 30 Sek.
approx. 30 sec.

15 ca. 1 Min.
approx. 1 min.

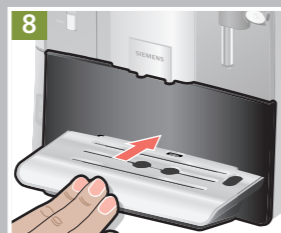
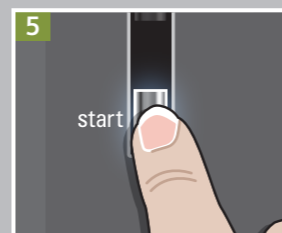


Service-Programm
REINIGEN
Service Program
CLEAN

1 REINIGEN
NOTWENDIG!
CLEAN
REQUIRED!



4 START
REINIGEN
START
CLEANING



10 start
ca. 8 Min.
approx. 8 min.

